

Site:  
Lot:  
Model:  
Purchaser:  
Purchaser:  
Phone:  
Email:

RIVER'S EDGE WASAGA  
120  
HUMBER (50-05) ELEV C  
Hardeep Singh Batth  
Poonam Chauhan  
647-705-1916  
hardeepbatth@icloud.com



DESCRIPTION		DATE SELECTED
BONUS PACKAGE: STAINLESS STEEL HOOD FAN	INCLUDED IN APS	
STRUCTURALS		
1	NA	25-Jan-22
2	SMOOTH CEILINGS MAIN FLOOR INCLUDES OPEN TO ABOVE	25-Jan-22
3	(7) 8 FT HIGH MAIN FLOOR INTERIOR DOORS	25-Jan-22
4	FIREPLACE UPGRADE TO BLF7451 (74") LINEAR IN LIEU OF STANDARD	25-Jan-22
5	GAS LINE TO STOVE (INCLUDES 15 AMP) 40 AMP TO REMAIN	25-Jan-22
6	10" HOOD FAN VENT ABOVE STOVE IN LIEU OF STANDARD 6"	25-Jan-22
	COLOURS	
1	FLOOR TILES UP # 6 KITCHEN, BREAKFAST, SERVERY, POWDER, FOYER, MUD ROOM	27-May-22
2	N/A	27-May-22
3	SHOWER FLOOR TILES UP # 2 MASTER ENSUITE	27-May-22
4	SHOWER FLOOR TILES UP # 2 ENSUITE	27-May-22
5	N/A	27-May-22
6	N/A	27-May-22
7	N/A	27-May-22
8	N/A	27-May-22
9	N/A	27-May-22
10	N/A	27-May-22
11	HARDWOOD UP # 2 FAMILY ROOM, LANDINGS, MAIN HALL DINING ROOM, UPPER HALL	27-May-22
12	N/A	27-May-22
13	STAIN OAK STAIRS	27-May-22
14	UP# 3 IRON RAILINGS	27-May-22
15	TRIM UP # 2 TEMPORARY	27-May-22
16	WATERLINE TO FRIDGE	27-May-22
17	(1) CAPPED LIGHT ABOVE KITCHEN ISLAND ON SEPARATE SWITCH	27-May-22
18	PLUG ABOVE FIREPLACE INSTALL APPROX 65" FROM FLOOR, SHIFT CABLE BESIDE PLUG	27-May-22
19	ROUGH IN ONLY LIGHT VALANCE KITCHEN ON SEPARATE SWITCH AND SERVERY SEPARATE SWITCH	27-May-22
20	(4) PAPER HOLDER MODEL YB 2408 (3) 24" TOWEL BARS MASTER, SHARED ENSUITE (1) 9" TOWEL BAR YB2486 POWDER	27-May-22
21	UPGRADE KITCHEN HARDWARE	27-May-22
22	COUNTER TOPS UP # 3 KITCHEN, ISLAND AND SERVERY	27-May-22
23	QUARTZ BACKSPLASH # 3 KITCHEN AND SERVERY INCLUDES BEHIND CHIMNEY HOOD	27-May-22
24	N/A	27-May-22
25	N/A	27-May-22
26	N/A	27-May-22
27	N/A	27-May-22
28	N/A	27-May-22
29	N/A	27-May-22

CONSTRUCTION SUMMARY OF EXTRAS

REVISED MAY 23 2024

~~Printed 12:33:06 PM~~ / 3:18 PM / Page 2 of 2

Site:  
Lot:  
Model:  
Purchaser:  
Purchaser:  
Phone:  
Email:

RIVER'S EDGE WASAGA  
120  
HUMBER (50-05) ELEV C  
Hardeep Singh Bath  
Poonam Chauhan  
647-705-1916  
hardeepbath@icloud.com



	DESCRIPTION	DATE SELECTED
30	COMFORT HEIGHT VANITY, MASTER ENSUITE, SHARED BATH, ENSUITE BATH	27-May-22
31	KITCHEN, SERVERY CABINETS UP # 2	27-May-22
32	FRIDGE ENCLOSURE	27-May-22
33	POT AND PAN DRAWERS	27-May-22
34	DELETE CABINET ABOVE STOVE AND ALLOW FOR CHIMNEY HOOD	27-May-22
35	LIGHT VALANCE STANDARD STYLE KITCHEN AND SERVERY	27-May-22
36	RISER AND LARGE ROYAL CROWN TO CEILING	27-May-22
37	KITCHEN 2 TONE	27-May-22
38	SHARED BATH BANK OF DRAWERS	27-May-22
39	MASTER ENSUITE BANK OF DRAWERS	27-May-22
40	N/A	27-May-22
41	KITCHEN SINK SILGRANITE WHITE U SUPER SINGLE (WHITE) #401705	27-May-22
42	CHIMNEY HOOD FAN SPECS TO FOLLOW NO LATER THEN JUNE 30, 2022	27-May-22

ZANCOR HOMES COLOUR CHART

PRINTED 2022-05-27, 4:57 PM

ENTRANCES				
Main Foyer - FLOORING	ETERNA VOLKAS POLISHED WHITE 24 X 24 UP # 6			
Mudroom - FLOORING	ETERNA VOLKAS POLISHED WHITE 24 X 24 UP # 6			
Side Hall - FLOORING	NA			
Basement Foyer - FLOORING	NA			
KITCHEN				
Kitchen - FLOORING /Serving	ETERNA VOLKAS POLISHED WHITE 24 X 24 UP # 6			
Breakfast - FLOORING	ETERNA VOLKAS POLISHED WHITE 24 X 24 UP # 6			
Kitchen - CABINETS	VENETION MDF VANILLA MILKSHAKE UP # 2			
Island - CABINETS	VENETION MAPLE TIMBER GREY UP # 2			
Serving - CABINETS	VENETION MDF VANILLA MILKSHAKE UP # 2			
Kitchen - HANDLES/KNOBS	H 800BC -128			
Kitchen - COUNTERTOP/Serving	CALACATTA GOLD QUARTZ UP # 3			
Island - COUNTERTOP	CALACATTA GOLD QUARTZ UP # 3			
Kitchen - BACKSPLASH	CALACATTA GOLD QUARTZ UP # 3			
Kitchen - SINK	PRECIS U SUPER SINGLE SILGRANITE WHITE #401705			
Kitchen - FAUCET	STANDARD			
GREAT ROOM / DINING / LIVING / DEN / OFFICE / BASEMENT				
Family / Great Room - FLOORING	KENTWOOD BRUSHED OAK STONECROP 5" X 3/4" UP # 2			
Main Hall - FLOORING	KENTWOOD BRUSHED OAK STONECROP 5" X 3/4" UP # 2			
Dining / FLOORING	KENTWOOD BRUSHED OAK STONECROP 5" X 3/4" UP # 2			
Library / Den - FLOORING	NA			
Basement Rec Room - FLOORING	NA			
STAIRS				
Railing Details - PICKETS	METAL BLACK SINGLE COLLAR WITH ALT PLAIN			
Railing Details - POSTS	3 1/4 SQUARE OAK POSTS WITH BEVEL CORNERS			
Railing Details - HANDRAIL	2 3/4" GROOVED OAK HANDRAIL			
Stair Stain - MAIN STAIRS	STAIN TO MATCH HARDWOOD AS CLOSE AS POSSIBLE			
Stair Stain - BASEMENT STAIRS (if applicable)	NA			
BEDROOMS / BATHROOMS / LAUNDRY				
Powder Room - FLOORING	ETERNA VOLKAS POLISHED WHITE 24 X 24 UP # 6			
Powder Room - CABINETS	NA			
Powder Room - HARDWARE	NA			
Powder Room - COUNTERTOP	NA			
Powder Room - SINK	STANDARD			
Powder Room - FAUCET	STANDARD			
RESELECTION REQUIRED				
Laundry - FLOORING	LOST GREY 12 X 24 INSTALL STACKED			
Laundry - CABINETS	**GENESIS LIGHT GREY 12 X 24 SIERRA PVC WHITE	Laundry - HANDLES/KNOBS	H-800-BC	
Laundry - COUNTERTOP	Confirmed by email May 24 2023 1886K-097 COTE D AZUR	Laundry - SINK	STANDARD	
Laundry - BACKSPLASH	NA	Laundry - FAUCET	STANDARD	
KENTWOOD BRUSHED OAK STONECROP 5" X 3/4" UP # 2				
Upper Hall - FLOORING	OPENING NIGHT T-21			
Master Bedroom - FLOORING	OPENING NIGHT T-21			
Bedroom 2 - FLOORING	OPENING NIGHT T-21			
Bedroom 3 - FLOORING	OPENING NIGHT T-21			
Bedroom 4 - FLOORING	OPENING NIGHT T-21			
Bedroom 5 - FLOORING	NA			
RESELECTION REQUIRED				
Master Ensuite - FLOORING	**FLOOR - GENESIS LIGHT GREY 12 X 24			
Master Ensuite - SHOWER WALL	DOLOMINA BLACK 12 X 24			
Master Ensuite - SHOWER FLOOR	Confirmed by email May 24 2023 ONT SERIES HEXAGON DARK GREY GLOSSY UP # 2			
Master Ensuite - SHOWER JAMB	BIANCA CARRERA			
Master Ensuite - CABINETS	SIERRA WHITE PVC			
Master Ensuite - HANDLES/KNOBS	H-800-BC			
Master Ensuite - COUNTERTOP	1886K-07 COTE D AZUR			
Master Ensuite - SINK(s)	STANDARD	Master Ensuite - FAUCET(s)	STANDARD	
***FOR TRADE USE***				
Any upgrades in the colour chart must be accompanied with a PES. It is the responsibility of all Trades to inform the builder of any discrepancies on sketches, PES and/or colour charts <u>PRIOR</u> to installation.		RIVERS EDGE WASAGA 120	SIGNATURES	
***PAGE 1 OF 2***			PURCHASER INITIALS	VENDOR APPROVAL

JUN 15 2022



2ND FLOOR CONTINUED...

Main Bath - FLOORING		NA
Main Bath - TUB / SHOWER WALL		NA
Main Bath - SHOWER FLOOR		NA
Main Bath - SHOWER JAMB		NA
Main Bath - CABINETS		NA
Main Bath - HANDLES/KNOBS		NA
Main Bath - COUNTERTOP		NA
Main Bath - SINK(s)		Main Bath - FAUCET(s)

RESELECTION REQUIRED

Shared Bath- FLOORING	**FLOOR - GENESIS LIGHT GREY 12 X 24 <del>12 X 24 INSTANT STACKED</del>	
Shared Bath- TUB / SHOWER WALL	**WALL - DOLOMINA BLACK 12 X 24 <del>12 X 24 INSTANT STACKED</del>	
Shared Bath- SHOWER FLOOR	<del>12 X 24 INSTANT STACKED</del> 12 X 24 INSTALL HORIZONTAL STACKED	

Confirmed by email May 24 2023

Shared Bath- SHOWER JAMB		NA
Shared Bath- CABINETS		SIERRA WHITE PVC
Shared Bath- HANDLES/KNOBS		H-800-BC
Shared Bath- COUNTERTOP		1886K-07
Shared Bath- SINK(s)	STANDARD	Shared Bath - FAUCET(s)
		STANDARD

RESELECTION REQUIRED

Ensuite Bath - FLOORING	**FLOOR - GENESIS LIGHT GREY 12 X 24 <del>12 X 24 INSTANT STACKED</del>	
Ensuite Bath - SHOWER WALL	**WALL - DOLOMINA BLACK 12 X 24 <del>12 X 24 INSTANT STACKED</del>	
Ensuite Bath - SHOWER FLOOR	<del>12 X 24 INSTANT STACKED</del> ONT SERIES HEXAGON DARK GREY GLOSSY UP # 2	

Confirmed by email May 24 2023

Ensuite Bath - SHOWER JAMB		BIANCA CARRERA
Ensuite Bath - CABINETS		SIERRA PVC WHITE
Ensuite Bath - HANDLES/KNOBS		H800-BC
Ensuite Bath - COUNTERTOP		1886K-07
Ensuite Bath - SINK(s)	STANDARD	Ensuite Bath - FAUCET(s)
		STANDARD

TRIM / PAINT

Casing/Baseboards		UP # 2 TEMPORARY
Interior Door STYLE		STANDARD
Interior Door HEIGHT		(7) 8 FT MAIN FLOOR
Interior Door Hardware		STANDARD
PAINT - Throughout		COOL WHITE

FIREPLACE

Location / Insert / Mantle		74" UPGRADE ELECTRIC FIREPLACE
----------------------------	--	--------------------------------

ACCESSORIES

Mirrors	STANDARD	BATH ACCESSORIES	UPGRADE
---------	----------	------------------	---------

APPLIANCE REQUIREMENTS

GAS LINE TO BBQ	STANDARD	ELECTRICAL for Built-in Oven	DECLINED
GAS LINE & ELECTRICAL TO STOVE	UPGRADE	ELECTRICAL for Built-in Micro	DECLINED
GAS LINE & ELECTRICAL TO DRYER	DECLINED	ELECTRICAL for Cooktop	DECLINED
HOOD FAN VENT SIZE	10" UPGRADE	ELECTRICAL for Bar Fridge	DECLINED
WATERLINE to Fridge	UPGRADE		

DISCLAIMER

Any changes to the colour chart after signing are subject to a \$5000 administration fee plus costs			
Purchaser has checked and acknowledged accuracy of colour and selections before signing.			

Colours of all materials are as close as possible to Builders selection but not necessarily identical due to dye lot variances in manufacturing/manufacturers. Due to construction progress some items may have been pre-selected or installed. In this event the Vendors's selection must be accepted by the purchaser

SITE / LOT:	RIVER'S EDGE WASAGA	120
PURCHASER(S):	Hardeep Singh Bath	
PURCHASER(S):	Poonam Chauhan	
PHONE #:	647-705-1916	
EMAIL:	hardeepbath@icloud.com	

\*\*\*FOR TRADE USE\*\*\*

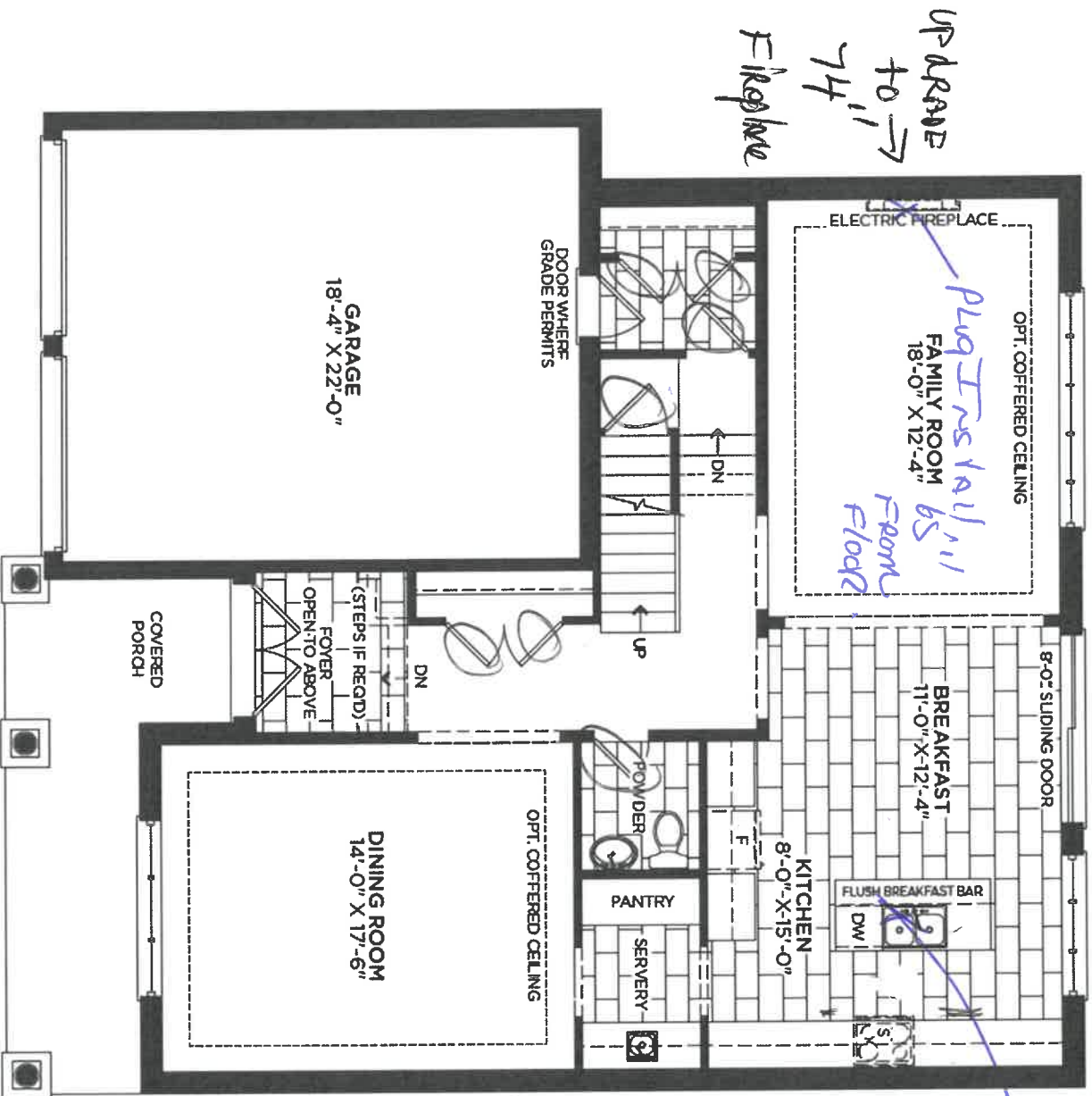
Any upgrades in the colour chart must be accompanied with a PES. It is the responsibility of all Trades to inform the builder of any discrepancies on sketches, PES and/or colour charts PRIOR to installation.	PURCHASER SIGNATURE	SIGNATURES / DATE
	PURCHASER SIGNATURE	
	DÉCOR CONSULTANT	



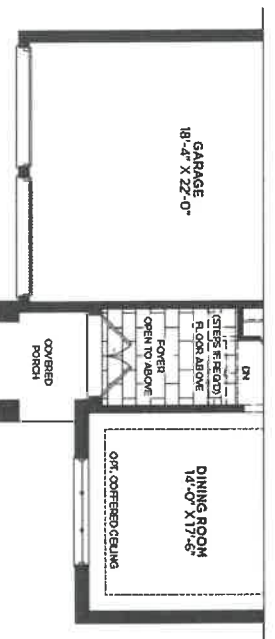
KATHERINE

50-05 Hummer

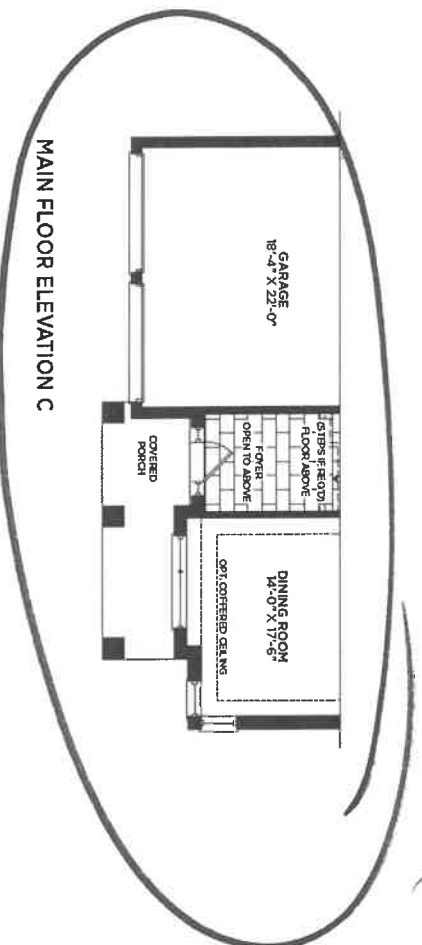
Lot 120  
pma 5/22



MAIN FLOOR ELEVATION A



MAIN FLOOR ELEVATION B



MAIN FLOOR ELEVATION C

Smooth  
Ceiling 8.

(7) 8' High

Interior  
Door's

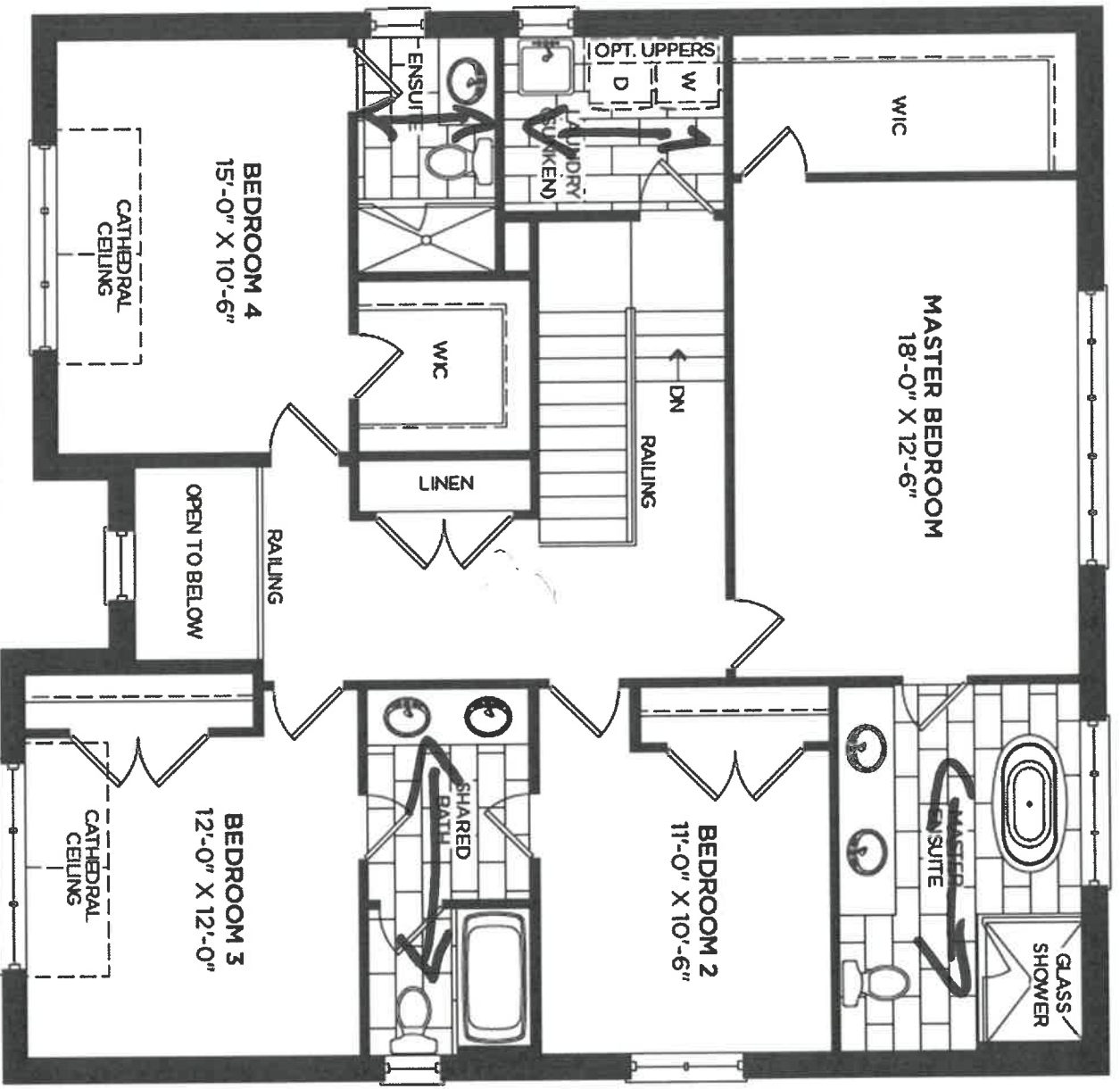
the

mga 7/22

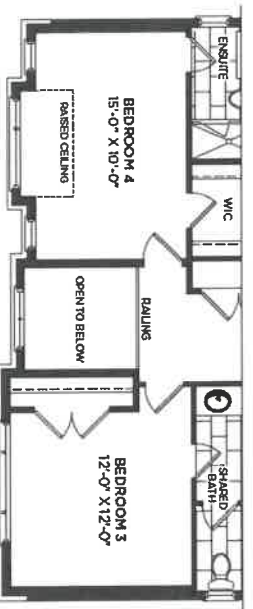
# 50-05 Humber



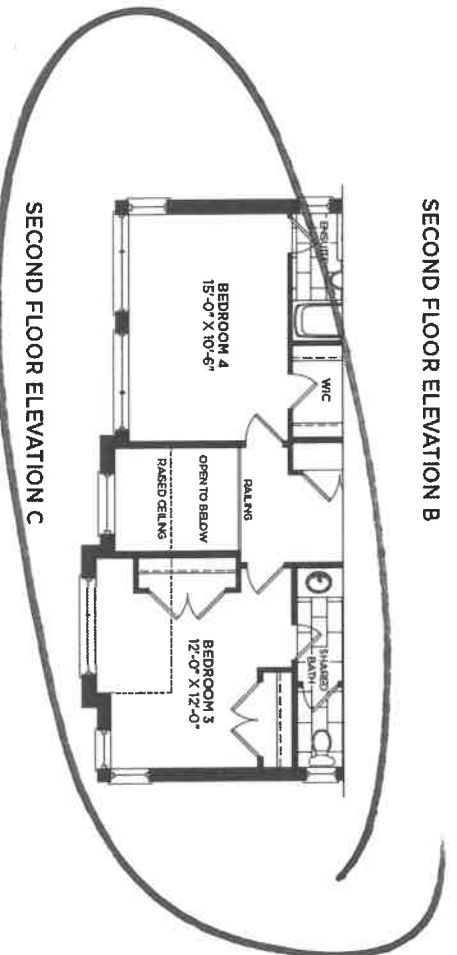
Lot 120  
Jan 25/22



## SECOND FLOOR ELEVATION A



**SECOND FLOOR ELEVATION B**



**SECOND FLOOR ELEVATION C**

File  
Director



22/Lebwin





DATE SUBMITTED  
01 Mar 2022

CLIENT NAME: ZANCOR HOMES  
SHIP TO : Rivers Edge Sunddale Trails  
#50-05  
DRAFTED BY: Binita  
COMMENT

PH:  
CELL :

P/O #

JOB NUMBER

INSTALL DATE:

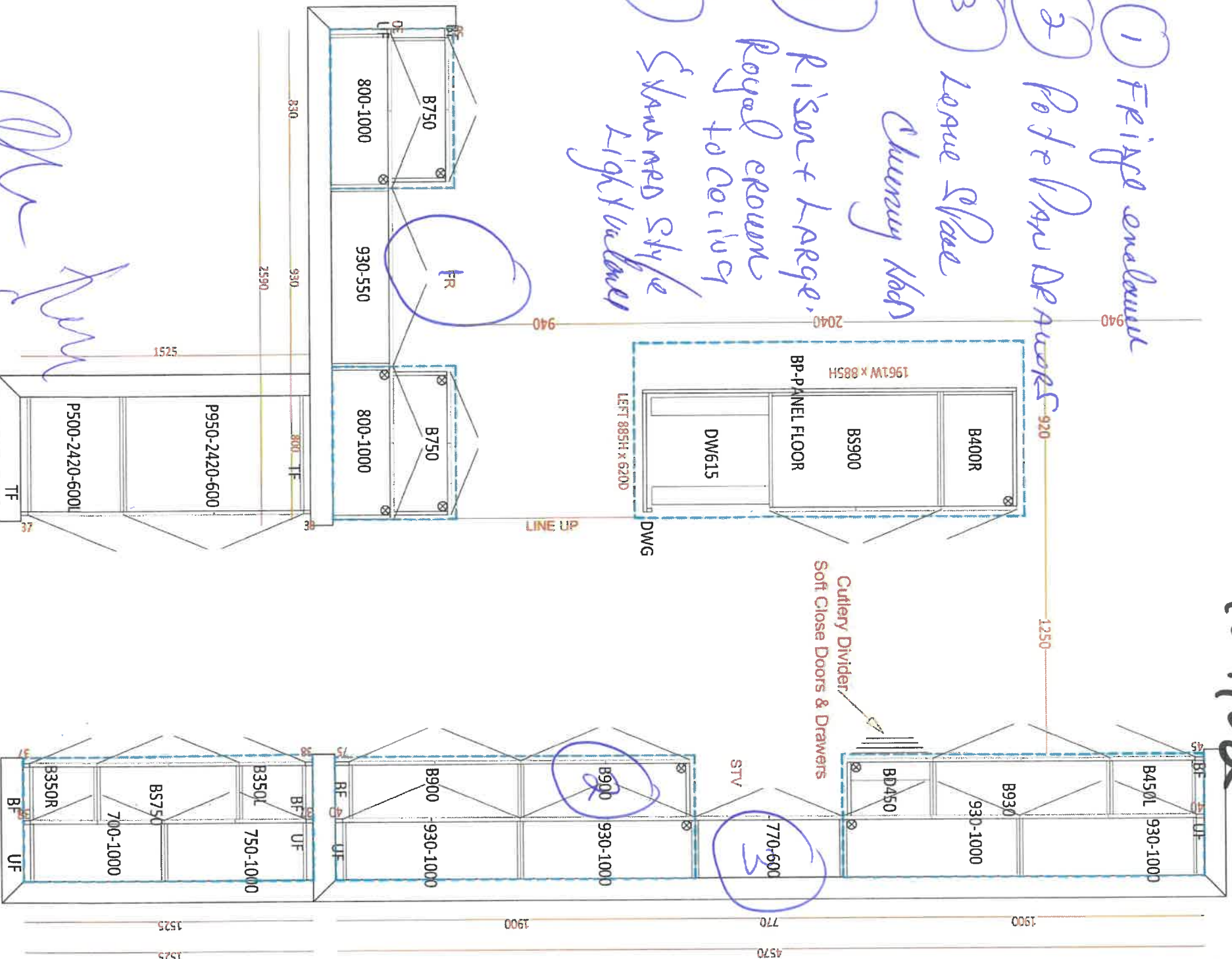
PAGE  
1 of 2

Kitchen

Lot 120

may 27/22

- 1 Fridge enclosure
- 2 Pot & Pan Drawers
- 3 Leave Space  
Churny Hob
- 4 Riser + Large  
Royal crown  
to ceiling
- 5 Shaved Style  
Light Walnut



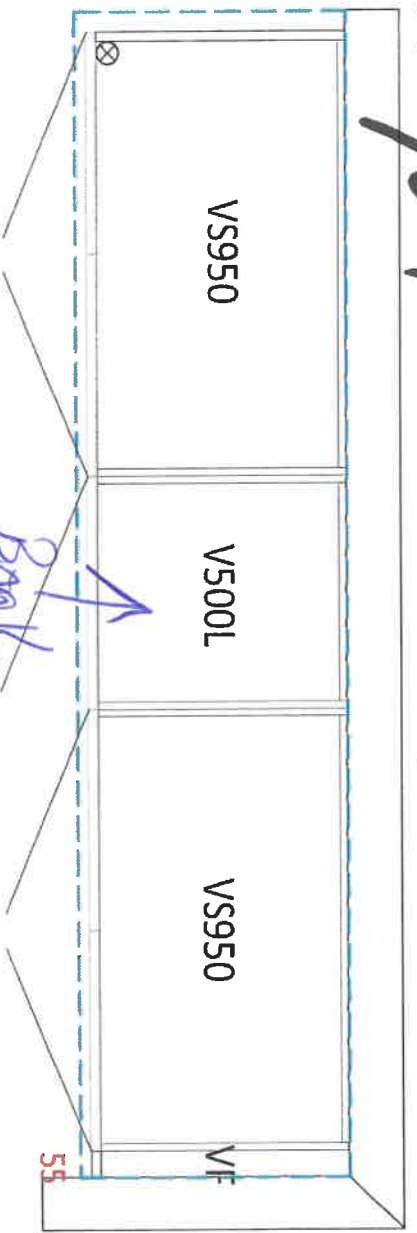


CLIENT NAME: ZANCOR HOMES		JOB NUMBER
SHIP TO : Rivers Edge Sunnisdale Trails		INSTALL DATE:
#50-05		
DATE SUBMITTED	DRAFTED BY: Binta	PH:
01 Mar 2022	COMMENT	CELL :
		P/O #
		PAGE
		2 of 2

*Maya 7*      2500      *106120*

Master Ensuite

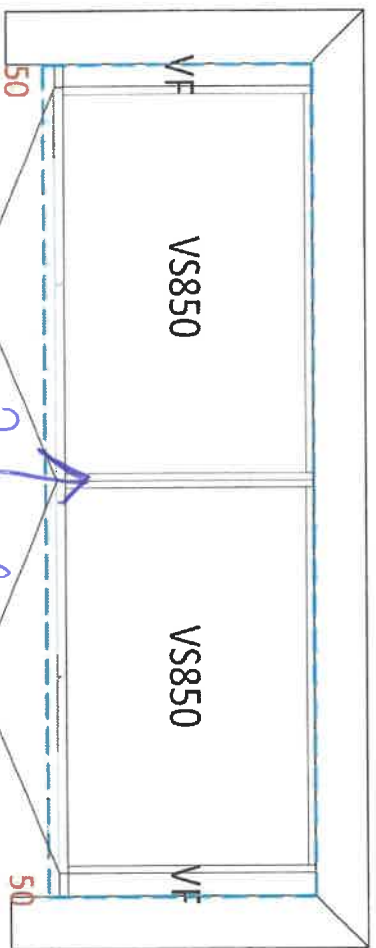
*Back of  
drawers  
control HT*



1800

Shared Bath

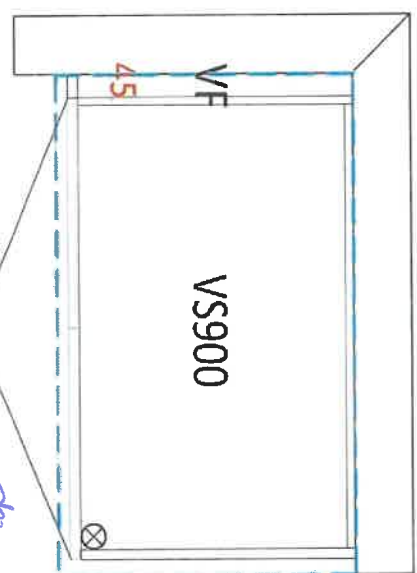
*Back of  
control HT  
drawers*



975

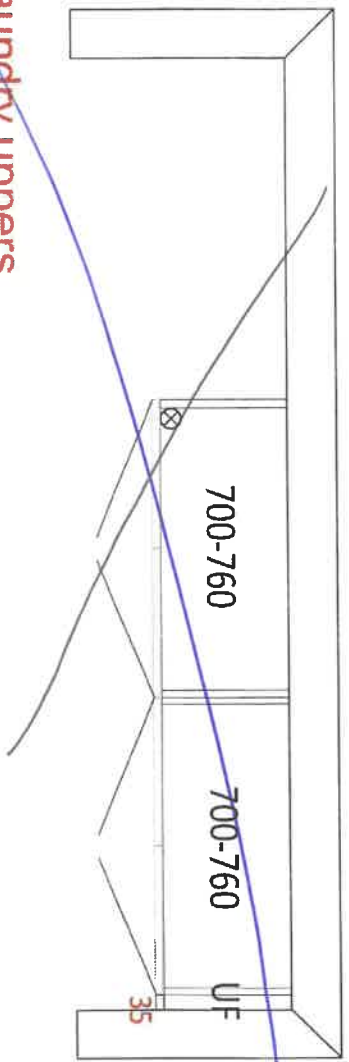
Ensuite

*control HT*



2235

*opt. Laundry uppers*





Lolico

May 27/22

## Method™

Traditional | Transitional | Modern



**Double Robe Hook**  
Model YB2403

Chrome  
Other



**Pivoting Paper Holder**  
Model YB2408

Chrome  
Other



**18" Towel Bar**  
Model YB2418

Chrome  
Other



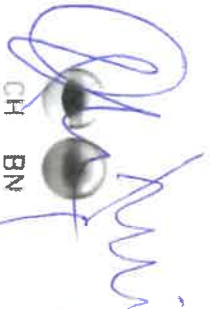
**24" Towel Bar**  
Model YB2424

Chrome  
Other



**9" Towel Bar**  
Model YB2406

Chrome  
Other



### FINISH OPTIONS:

To order, combine the model number with one of these finish letter(s):  
Chrome (CH), LifeShine® Brushed Nickel (BNL).

**PROOFIT**  
INSTALLATION SYSTEM

make  
sure  
to  
make  
sure

make  
sure  
to  
make  
sure

make  
sure  
to  
make  
sure

Lot 120.

May 27/22

## PRECIS SILGRANIT



- Made in Canada and Germany
- Natural granite composite material made of up to 80% quartz sand
- Heat, scratch and impact resistant
- Non-porous, impervious to moisture - does not absorb liquids or acids
- Easy to clean - no special cleaning required
- Includes 100 sq. in. of undermount stainless steel storage
- Backsplash is a curved down behind cabinets, cabinet storage
- Includes 32" x 100 mm stainless steel stainless, clips, cabinet template and installation instructions
- Limited Lifetime Warranty

### Undermount Installation

#### PRECIS CLASSIC



#### PRECIS U 1K



#### PRECIS U 1K LOW DOME



Model	Grid	Grid Size	Grid Material	Grid Finish	Grid Color	Grid Weight	Grid Dimensions	Grid Area	Grid Volume
Grid	Grid	Grid	Grid	Grid	Grid	Grid	Grid	Grid	Grid
Grid	Grid	Grid	Grid	Grid	Grid	Grid	Grid	Grid	Grid
Grid	Grid	Grid	Grid	Grid	Grid	Grid	Grid	Grid	Grid
Grid	Grid	Grid	Grid	Grid	Grid	Grid	Grid	Grid	Grid
Grid	Grid	Grid	Grid	Grid	Grid	Grid	Grid	Grid	Grid
Grid	Grid	Grid	Grid	Grid	Grid	Grid	Grid	Grid	Grid
Grid	Grid	Grid	Grid	Grid	Grid	Grid	Grid	Grid	Grid
Grid	Grid	Grid	Grid	Grid	Grid	Grid	Grid	Grid	Grid
Grid	Grid	Grid	Grid	Grid	Grid	Grid	Grid	Grid	Grid

Model	Grid	Grid Size	Grid Material	Grid Finish	Grid Color	Grid Weight	Grid Dimensions	Grid Area	Grid Volume
Grid	Grid	Grid	Grid	Grid	Grid	Grid	Grid	Grid	Grid
Grid	Grid	Grid	Grid	Grid	Grid	Grid	Grid	Grid	Grid
Grid	Grid	Grid	Grid	Grid	Grid	Grid	Grid	Grid	Grid
Grid	Grid	Grid	Grid	Grid	Grid	Grid	Grid	Grid	Grid
Grid	Grid	Grid	Grid	Grid	Grid	Grid	Grid	Grid	Grid
Grid	Grid	Grid	Grid	Grid	Grid	Grid	Grid	Grid	Grid
Grid	Grid	Grid	Grid	Grid	Grid	Grid	Grid	Grid	Grid
Grid	Grid	Grid	Grid	Grid	Grid	Grid	Grid	Grid	Grid
Grid	Grid	Grid	Grid	Grid	Grid	Grid	Grid	Grid	Grid

Model	Grid	Grid Size	Grid Material	Grid Finish	Grid Color	Grid Weight	Grid Dimensions	Grid Area	Grid Volume
Grid	Grid	Grid	Grid	Grid	Grid	Grid	Grid	Grid	Grid
Grid	Grid	Grid	Grid	Grid	Grid	Grid	Grid	Grid	Grid
Grid	Grid	Grid	Grid	Grid	Grid	Grid	Grid	Grid	Grid
Grid	Grid	Grid	Grid	Grid	Grid	Grid	Grid	Grid	Grid
Grid	Grid	Grid	Grid	Grid	Grid	Grid	Grid	Grid	Grid
Grid	Grid	Grid	Grid	Grid	Grid	Grid	Grid	Grid	Grid
Grid	Grid	Grid	Grid	Grid	Grid	Grid	Grid	Grid	Grid
Grid	Grid	Grid	Grid	Grid	Grid	Grid	Grid	Grid	Grid
Grid	Grid	Grid	Grid	Grid	Grid	Grid	Grid	Grid	Grid

### Build your BLANCO UNIT with Faucets and Accessories

Model	Grid	Grid Size	Grid Material	Grid Finish	Grid Color	Grid Weight	Grid Dimensions	Grid Area	Grid Volume
Grid	Grid	Grid	Grid	Grid	Grid	Grid	Grid	Grid	Grid
Grid	Grid	Grid	Grid	Grid	Grid	Grid	Grid	Grid	Grid
Grid	Grid	Grid	Grid	Grid	Grid	Grid	Grid	Grid	Grid
Grid	Grid	Grid	Grid	Grid	Grid	Grid	Grid	Grid	Grid
Grid	Grid	Grid	Grid	Grid	Grid	Grid	Grid	Grid	Grid
Grid	Grid	Grid	Grid	Grid	Grid	Grid	Grid	Grid	Grid
Grid	Grid	Grid	Grid	Grid	Grid	Grid	Grid	Grid	Grid
Grid	Grid	Grid	Grid	Grid	Grid	Grid	Grid	Grid	Grid
Grid	Grid	Grid	Grid	Grid	Grid	Grid	Grid	Grid	Grid

## 10 BLANCO

## PRECIS SILGRANIT



- Made in Canada and Germany
- Natural granite composite material made of up to 80% quartz sand
- Heat, scratch and impact resistant
- Non-porous, impervious to moisture - does not absorb liquids or acids
- Easy to clean - no special cleaning required
- Includes 100 sq. in. of undermount stainless steel storage
- Backsplash is a curved down behind cabinets, cabinet storage
- Includes 32" x 100 mm stainless steel stainless, clips, cabinet template and installation instructions
- Limited Lifetime Warranty

### Undermount Installation

#### PRECIS U 2



#### PRECIS 27 U SINGLE



#### PRECIS 27 J SINGLE



Model	Grid	Grid Size	Grid Material	Grid Finish	Grid Color	Grid Weight	Grid Dimensions	Grid Area	Grid Volume
Grid	Grid	Grid	Grid	Grid	Grid	Grid	Grid	Grid	Grid
Grid	Grid	Grid	Grid	Grid	Grid	Grid	Grid	Grid	Grid
Grid	Grid	Grid	Grid	Grid	Grid	Grid	Grid	Grid	Grid
Grid	Grid	Grid	Grid	Grid	Grid	Grid	Grid	Grid	Grid
Grid	Grid	Grid	Grid	Grid	Grid	Grid	Grid	Grid	Grid
Grid	Grid	Grid	Grid	Grid	Grid	Grid	Grid	Grid	Grid
Grid	Grid	Grid	Grid	Grid	Grid	Grid	Grid	Grid	Grid
Grid	Grid	Grid	Grid	Grid	Grid	Grid	Grid	Grid	Grid
Grid	Grid	Grid	Grid	Grid	Grid	Grid	Grid	Grid	Grid

Model	Grid	Grid Size	Grid Material	Grid Finish	Grid Color	Grid Weight	Grid Dimensions	Grid Area	Grid Volume
Grid	Grid	Grid	Grid	Grid	Grid	Grid	Grid	Grid	Grid
Grid	Grid	Grid	Grid	Grid	Grid	Grid	Grid	Grid	Grid
Grid	Grid	Grid	Grid	Grid	Grid	Grid	Grid	Grid	Grid
Grid	Grid	Grid	Grid	Grid	Grid	Grid	Grid	Grid	Grid
Grid	Grid	Grid	Grid	Grid	Grid	Grid	Grid	Grid	Grid
Grid	Grid	Grid	Grid	Grid	Grid	Grid	Grid	Grid	Grid
Grid	Grid	Grid	Grid	Grid	Grid	Grid	Grid	Grid	Grid
Grid	Grid	Grid	Grid	Grid	Grid	Grid	Grid	Grid	Grid
Grid	Grid	Grid	Grid	Grid	Grid	Grid	Grid	Grid	Grid

Model	Grid	Grid Size	Grid Material	Grid Finish	Grid Color	Grid Weight	Grid Dimensions	Grid Area	Grid Volume
Grid	Grid	Grid	Grid	Grid	Grid	Grid	Grid	Grid	Grid
Grid	Grid	Grid	Grid	Grid	Grid	Grid	Grid	Grid	Grid
Grid	Grid	Grid	Grid	Grid	Grid	Grid	Grid	Grid	Grid
Grid	Grid	Grid	Grid	Grid	Grid	Grid	Grid	Grid	Grid
Grid	Grid	Grid	Grid	Grid	Grid	Grid	Grid	Grid	Grid
Grid	Grid	Grid	Grid	Grid	Grid	Grid	Grid	Grid	Grid
Grid	Grid	Grid	Grid	Grid	Grid	Grid	Grid	Grid	Grid
Grid	Grid	Grid	Grid	Grid	Grid	Grid	Grid	Grid	Grid
Grid	Grid	Grid	Grid	Grid	Grid	Grid	Grid	Grid	Grid

### Build your BLANCO UNIT with Faucets and Accessories

Model	Grid	Grid Size	Grid Material	Grid Finish	Grid Color	Grid Weight	Grid Dimensions	Grid Area	Grid Volume
Grid	Grid	Grid	Grid	Grid	Grid	Grid	Grid	Grid	Grid
Grid	Grid	Grid	Grid	Grid	Grid	Grid	Grid	Grid	Grid
Grid	Grid	Grid	Grid	Grid	Grid	Grid	Grid	Grid	Grid
Grid	Grid	Grid	Grid	Grid	Grid	Grid	Grid	Grid	Grid
Grid	Grid	Grid	Grid	Grid	Grid	Grid	Grid	Grid	Grid
Grid	Grid	Grid	Grid	Grid	Grid	Grid	Grid	Grid	Grid
Grid	Grid	Grid	Grid	Grid	Grid	Grid	Grid	Grid	Grid
Grid	Grid	Grid	Grid	Grid	Grid	Grid	Grid	Grid	Grid
Grid	Grid	Grid	Grid	Grid	Grid	Grid	Grid	Grid	Grid

## 11 BLANCO

Blanco 401705  
(White)

White

Stone Countertop Edge Profiles

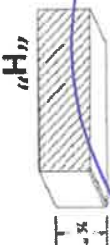
\*\*Where applicable as per site specifications\*\*

STANDARD EDGE FOR KITCHEN & VANITIES

Standard Countertop Edge in Kitchen



Standard Countertop Edge in Vanity

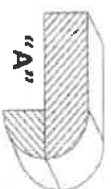
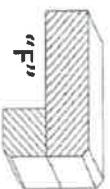
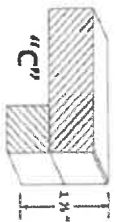


Homeowner(s) Initial

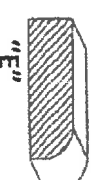
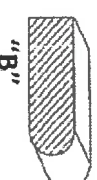
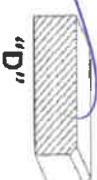
*Quyen*

OPTION (1) EDGE FOR KITCHEN & VANITIES \$250

Optional Edge in Kitchen



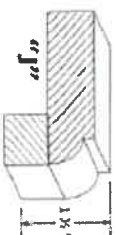
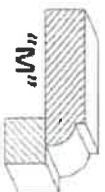
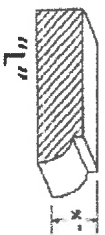
Optional Edge in Bathroom



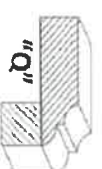
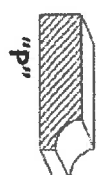
Homeowner(s) Initial

OPTION (2) EDGE FOR KITCHEN & VANITIES CUSTOM PRICING

Optional Edge for Kitchen



Optional Edge in Vanity



Homeowner(s) Initial

DATE

*May 27, 20*

SITE

WASAGA RIVERS EDGE

LOT

*120*



## APPLIANCE ACKNOWLEDGEMENT

**CONTACT: Steve Miller - Appliance Canada (905) 660-2424 / smiller@appliancecanada.com**

- It is the Purchaser's responsibility to coordinate delivery, installation and hook up of appliances and to ensure they are installed as per Manufacturers specifications after closing.

**STANDARD APPLIANCE OPENINGS provided by Zancor:**

\*Standard appliance openings are approximate and the minimum required. Sizes may vary due to onsite condition and/or when modifications have been made to the cabinetry.

- Fridge Opening 36" x 74"
- Stove Opening 30"
- Hood Fan Opening 30"
- Hood Fan & Vent 6" with Under Cabinet Hood
- Dishwasher Opening 24"

Accepts Standard  
Openings \*\*Initial**OPTIONAL UPGRADED APPLIANCES to be provided by Homeowner:**

- **\*\*Specs/information sheets are required and it is the responsibility of the homeowner to provide this to Zancor Homes by the due date that has been provided. If appliance specs are not submitted, Zancor Homes will not be responsible for any necessary requirements and the standard opening will be built.**

INITIAL

- **Upgraded Appliance Specs are DUE 2 WEEKS FROM SIGNED DATE OF COLOUR CHART (if not received during appointment)**

- **\*\*Specs that require changes/modifications after this date will not be accepted\*\*\***

- **NOTE: Any upgraded appliances are to be paid by the Purchaser, directly to the appliances company.**

- **Additional charges to the Purchaser may apply for cabinetry, electrical and plumbing in order to accommodate the specs given by the homeowner.**

**FRIDGE UPGRADE**

- ☐ Built-in
- ☐ Paneled \*\*Panel to match required
- ☐ Integrated / Flush Inset
- ☒ Waterline

**RANGE UPGRADE**

\*Larger hood fan CFM might be required, which need a larger vent

- ☐ 36" \*\*Hood fan opening must be the same size or larger (8" vent might be required)
- ☐ 48" \*\*Hood Fan opening must be the same size or larger (8" or 10" vent required)
- ☐ Gas Range \*\*gas line and electrical required & sold separately
- ☐ Induction \*\*electrical required & sold separately
- ☐ Cooktop (Apron Front) \*\*Countertop Cut-out required & sold separately
- ☐ Cooktop (Drop-in) \*\*countertop Cut-out required & sold separately

**HOOD FAN & VENT****UPGRADE**

- ☐ 8 Inch \*\*Required for 600 CFM
- ☒ 10 Inch
- ☒ Chimney Hood Fan \*\*Vent must be centred
- ☐ Insert / Liner

**WALL OVEN/MICRO****UPGRADE****\*\*Electrical required**

- ☐ Single Wall Oven \*\*electrical required & sold separately
- ☐ Double Wall Oven \*\*electrical required & sold separately
- ☐ Steam Oven \*\*electrical required & sold separately
- ☐ Warming Drawer \*\*electrical required & sold separately
- ☐ Over Then Range Microwave (OTR)
- ☐ Built-In Microwave \*\*Trim Kit required \*\*electrical required & sold separately

DATE May 27/22 **WASAGA RIVERS EDGE** SITE 120 LOT 120

\*\* Any upgrades checked in this appliance form must be accompanied with specs provided by the Purchaser.

\*\*It is the responsibility of the trade to inform the Builder of any discrepancies with specs, sketches, extras and/or colour chart PRIOR to production/installation.

ZANCOR

221 North Rivermede Road, Concord, Ontario L4K 3N7 \* T: (905) 738.7010 F: (905) 738.5948

## INTERIOR FINISHES ACKNOWLEDGEMENT / WAIVER

Purchaser accepts and acknowledges that the Builder reserves the right to substitute materials with those of equal or better quality where the manufacture, scheduling or delivery of materials may directly impact the Builder's ability to meet its' contractual obligations under the Agreement of Purchase and Sale.

**UPGRADES/EXTRAS:** All upgrades and additional selections indicated on the colour chart must be accompanied by an upgrades/extras sheet (PES) and full payment otherwise the selection will be invalid. All colour charts and upgrades/extras will not proceed until verified and signed by an authorized signing officer at the Vendor's head office. **CHANGES WILL NOT BE PERMITTED UPON COMPLETION AND SUBMISSION OF THE COLOUR CHART.**

**PORCELAIN & NATURAL STONES:** Due to the properties of natural stones including but not limited to **marble, granite, quartz**, no two pieces are exactly the same. Variations in colour, tone, granularity (pitting, fissures) and pattern are to be expected, including various lighting may affect the overall finished look. Stone tops are sealed at time of installation and should never be cleaned with lemon oil or vinegar. Stones are porous materials, therefore any spilled substance require immediate attention. Stone countertops require regular seal re-application as part of home maintenance. Purchaser acknowledges colour and product variations as well as natural imperfections may exist with the selection of natural stone materials and shall not hold the Vendor liable for provision of same.

**STONE COUNTERTOP JOINTS:** Purchaser is aware there may be joints in stone counter tops, in kitchens and vanities if applicable as per plan. Joints will also be applicable where the length of the counter top exceeds the length of a stone slab.

**CERAMIC TILES:** Due to manufacturing, shade (dye lots), product variations may exist that can affect the overall look of the finished product. Although every effort will be made to ensure the colours and materials selected are as close as possible to the samples, the purchaser acknowledges that the sample tiles supplied in the Design Centre may not be identical to the materials installed in the home.

**STAIR STAINS:** Due to the natural properties of wood, many variables can affect the overall look of the finished product. Factors including but not limited to wood type, knotting, graining, density, age, humidity, and air temperature can result in substantial variations in stain intensity. The purchaser accepts that although the Vendor will do their best to match stain the unfinished stairs as close as possible to the pre-finished floors, it is not possible to have an identical match and that there MAY be shade differences between the two products.

**CABINETRY:** Due to the natural properties of wood, slight variations apparent with cabinetry are to be expected. This includes but not limited to wood species, wood grain, colour, finish, product variations, and natural imperfections are all factors that may affect the overall look of the finished product. Such factors make exact colour matching impossible. The type and intensity of lighting in the areas of designated cabinetry placement may also highlight characteristics of cabinetry finish. All cabinets shall be finished with a white melamine interior box unless a finished interior is upgraded. Due to building specifications and/or on-site conditions, certain cabinetry upgrades may not be possible. The purchaser acknowledges that the Builder cannot guarantee the cabinetry finish or provision of certain upgrades and shall not hold the Builder liable for provision of same.

**UPGRADES/EXTRAS:** All upgrades and additional selections indicated on the colour chart must be accompanied by an upgrades/extras sheet (PES) and full payment otherwise the selection will be invalid. All colour charts and upgrades/extras will not proceed until verified and signed by an authorized signing officer at the Vendor's head office. **CHANGES WILL NOT BE PERMITTED UPON COMPLETION AND SUBMISSION OF THE COLOUR CHART.**

**HARDWOOD / LAMINATE FLOORING:** Due to the properties of wood and laminate, many variables can affect the overall look of the finished product. Variations include but not limited to wood type or laminate finish, colour/stain and wood grain are significant factors that make exact colour matching impossible. The purchaser acknowledges that the hardwood flooring is a pre-finished product in a controlled environment. Expansion, compression and cupping are characteristics of hardwood flooring once installed in the home. The purchaser acknowledges these may become apparent over time and despite the Builders' efforts to install the hardwood flooring materials in keeping with good workmanship, the Builder shall not be responsible nor held liable for minor variances of fluctuation in hardwood flooring materials.

### HARDWOOD / LAMINATE WAIVER:

I/We understand hardwood flooring is classified as a porous material and as such not recommended by the Builder in certain areas. I/We understand there is a concern due to possible water and other substances being frequently splashed or spilled onto the floor and in contravention of Ontario Building Code Section 9.30.1.2(1).

*"Finished flooring bathrooms, kitchens, public entrance halls, laundry & general storage areas shall consist of resilient flooring, felted-synthetic-fibre floor coverings, concrete, terrazzo, ceramic tile, mastic or other types of flooring providing similar degrees of water resistance."*

I/We are prepared to assume full responsibility for any damage caused to the hardwood floor or subfloor due to moisture absorbency in the mentioned areas, and agree to waive any claims against the Township of residence, TARIION and/or the Builder in relation to the matter. **\*\*SEE COLOUR CHART FOR LOCATIONS\*\***

DATE

*22/04/2020*

WASAGA RIVERS EDGE

SITE

LOT

*120*

221 North Rivermede Road, Concord, Ontario L4K 3N7 \* T: (905) 738.7010 F: (905) 738.5948