

Simone Walker

From: Steve Miller <smiller@appliancecana.com>
Sent: September 21, 2021 2:57 PM
To: Simone Walker
Cc: tusherup@gmail.com
Subject: Lot 22 Shoreline
Attachments: Scanned from a Xerox Multifunction Printer.pdf

Hi Simone,

Could you let the purchaser of Lot 22 Shoreline know if a wall oven under the cooktop is still an option and the cost please?

They're cc'd on the e-mail

Thanks,

Steve Miller

Appliance Canada
8701 Jane Street
Concord, On. L4K2M6
905 660 2424 Ex. 2344



Steve Miller
Specs.

From: Postmaster-AC <postmaster@appliancecana.com>
Sent: Tuesday, September 21, 2021 1:35 PM
To: Steve Miller <smiller@appliancecana.com>
Subject: Scanned from a Xerox Multifunction Printer

Please open the attached document. It was scanned and sent to you using a Xerox Multifunction Printer.

Attachment File Type: pdf, Multi-Page

Multifunction Printer Location: machine location not set
Device Name: XRX9C934E8EF380

For more information on Xerox products and solutions, please visit <http://www.xerox.com>

Simone Walker

From: Steve Miller <smiller@appliancescanada.com>
Sent: September 21, 2021 2:57 PM
To: Simone Walker
Cc: tusherup@gmail.com
Subject: Lot 22 Shoreline
Attachments: Scanned from a Xerox Multifunction Printer.pdf

Hi Simone,

Could you let the purchaser of Lot 22 Shoreline know if a wall oven under the cooktop is still and option and the cost please?

They're cc'd on the e-mail

Thanks,

Steve Miller

Appliance Canada
8701 Jane Street
Concord, On. L4K2M6
905 660 2424 Ex. 2344



From: Postmaster-AC <postmaster@appliancescanada.com>
Sent: Tuesday, September 21, 2021 1:35 PM
To: Steve Miller <smiller@appliancescanada.com>
Subject: Scanned from a Xerox Multifunction Printer

Please open the attached document. It was scanned and sent to you using a Xerox Multifunction Printer.

Attachment File Type: pdf, Multi-Page

Multifunction Printer Location: machine location not set

Device Name: XRX9C934E8EF380

For more information on Xerox products and solutions, please visit <http://www.xerox.com>

Simone Walker

From: Steve Miller <smiller@appliancacanada.com>
Sent: September 21, 2021 2:57 PM
To: Simone Walker
Cc: tusherp@gmail.com
Subject: Lot 22 Shoreline
Attachments: Scanned from a Xerox Multifunction Printer.pdf

Hi Simone,

Could you let the purchaser of Lot 22 Shoreline know if a wall oven under the cooktop is still and option and the cost please?

They're cc'd on the e-mail

Thanks,

Steve Miller

Appliance Canada
8701 Jane Street
Concord, On. L4K2M6
905 660 2424 Ex. 2344



From: Postmaster-AC <postmaster@appliancacanada.com>
Sent: Tuesday, September 21, 2021 1:35 PM
To: Steve Miller <smiller@appliancacanada.com>
Subject: Scanned from a Xerox Multifunction Printer

Please open the attached document. It was scanned and sent to you using a Xerox Multifunction Printer.

Attachment File Type: pdf, Multi-Page

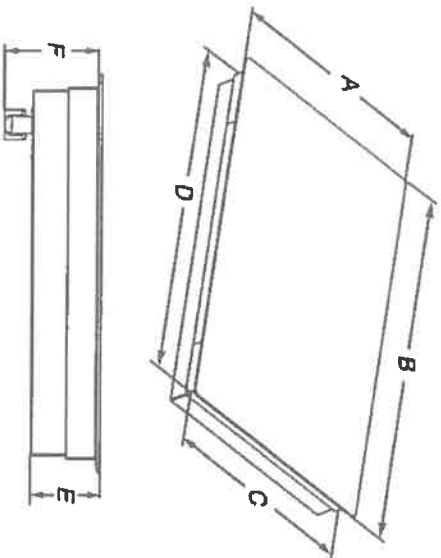
Multifunction Printer Location: machine location not set
Device Name: XRX9C934EE8EF380

For more information on Xerox products and solutions, please visit <http://www.xerox.com>

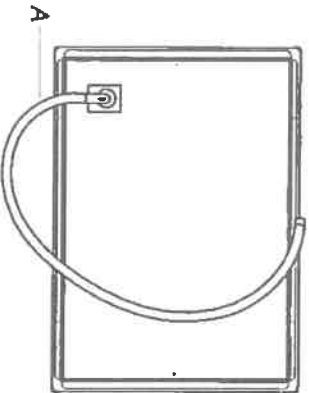
- The cooktop should be installed away from strong draft areas, such as windows, doors, fans or strong heating vents. The cooktop should be located for convenient use in the kitchen.
- Use the countertop opening dimensions that are given with these installation instructions. Given dimensions are minimum clearances and provide 0" (0 cm) clearance.
- Grounded electrical supply is required. See "Electrical Requirements" section.

IMPORTANT: To avoid damage to your cabinets, check with your builder or cabinet supplier to make sure that the materials used will not discolor, delaminate, or sustain other damage.

Product Dimensions



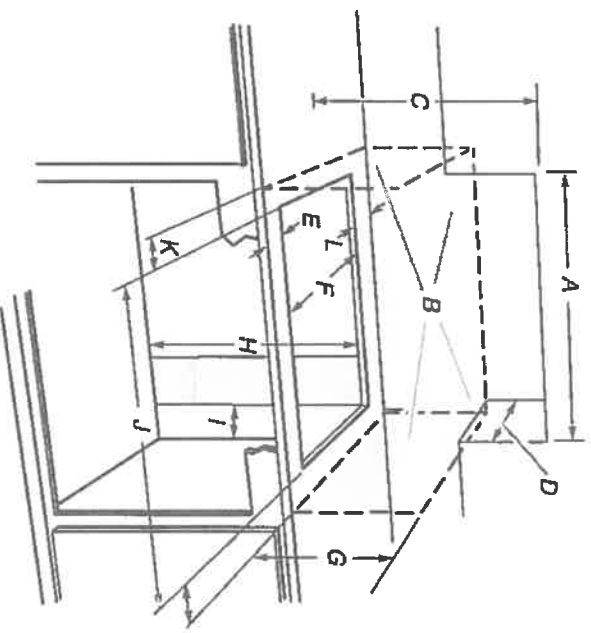
- A. Glass depth - black and white models - 21 ³/₁₆" (55.2 cm)
- B. Glass width - 24" (60.9 cm) models - 22 ¹/₈" (56.4 cm)
- B. Glass width - 30" (76.2 cm) models - 23 ³/₁₆" (60.5 cm)
- C. Glass width - 36" (91.4 cm) models - 30 ³/₁₆" (78.4 cm)
- C. Glass width - 36" (91.4 cm) models - 36 ³/₁₆" (92.3 cm)
- D. Frame depth - 20 ³/₁₆" (51.6 cm)
- D. Frame width - 24" (60.9 cm) models - 21 ³/₁₆" (55.7 cm)
- D. Frame width - 30" (76.2 cm) models - 29" (73.7 cm)
- E. Frame width - 36" (91.4 cm) models - 34 ⁷/₁₆" (87.5 cm)
- E. Cooktop height with bottom heat shield - 3 ⁷/₁₆" (9.8 cm)
- F. Cooktop height including conduit (located at rear of cooktop, right side) - 5" (12.7 cm)
- F. Cooktop height including conduit (located at rear of cooktop, right side) - 6 ¹/₁₆" (15.4 cm)



- A. Location of Power Cord (length of power cord is 48" (121.9 cm), including the conduit)

Cabinet Dimensions

IMPORTANT: If installing a range hood or microwave hood combination above cooking surface, follow the range hood or microwave hood combination installation instructions for dimensional clearances above the cooktop surface.



- A. 24" (60.9 cm) on 24" models; 30" (76.2 cm) on 30" models; 36" (91.4 cm) on 36" models
- B. Combustible area above countertop (shown by dashed box above)
- C. 30" (76.2 cm) minimum clearance between top of cooktop platform and bottom of uncovered wood or metal cabinet (24" (61 cm) minimum clearance if bottom of wood or metal cabinet is covered by not less than 1/2" (12.7 mm) flame retardant milboard covered with not less than No. 28 MSG sheet steel, 0.015" (0.38 mm) stainless steel, or 0.024" (0.61 mm) aluminum or 0.020" (0.51 mm) copper)
- D. 13" (33 cm) recommended upper cabinet depth
- E. 2" (5.1 cm)
- F. 20 1/2" (52.0 cm) recommended cutout
- G. 18" (45.7 cm) minimum clearance from upper cabinet to countertop within minimum horizontal clearances to cooktop
- H. Junction box or outlet: 7" (17.8 cm) minimum from top of countertop
- I. Junction box or outlet: 9" (23.0 cm) maximum from right side of cabinet
- J. 29 1/2" (74.9 cm) recommended cutout on 30" (76.2 cm) models. Will fit in cutout from 29 1/8" - 29 7/8" (73.8-75.1 cm) on 30" (76.2 cm) models.
- K. 35 1/2" (90.2 cm) recommended cutout on 36" (91.4 cm) models. Will fit in cutout from 34 3/8" - 35 1/8" (87.8-90.3 cm) on 36" (91.4 cm) models.
- L. 22 3/16" (56.67 cm) recommended cutout on 24" (61.0 cm) models. Will fit in cutout from 22 1/4" - 22 3/4" (56.4 - 57.0 cm) on 24" (61.0 cm) models.
- M. 2 1/2" (6.35 cm) minimum distance to nearest left and right side combustible surface above cooktop
- N. 1 1/2" (3.81 cm) minimum clearance between back wall and countertop

NOTES: After making the countertop cutout, some installations may require notching down the base cabinet side walls to clear the cooktop base. To avoid this modification, use a base cabinet with sidewalls wider than the cutout.

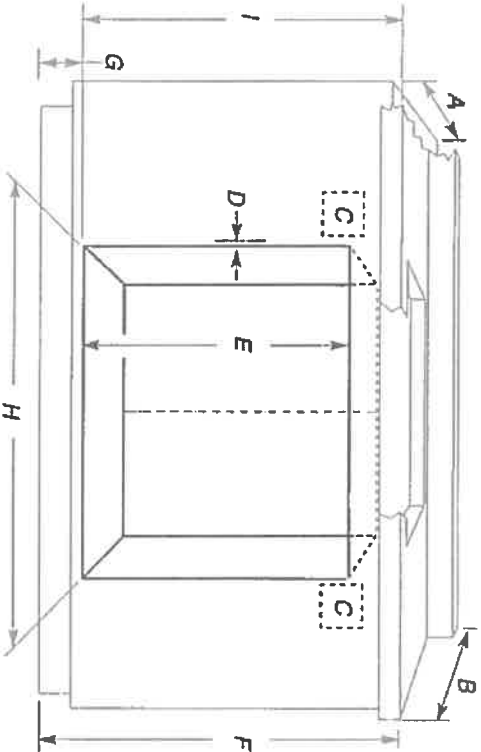
If cabinet has a drawer, a 5 1/2" (14.0 cm) depth clearance from the top of the countertop to the top of the drawer (or other obstruction) in base cabinet is required.

CUTOUT DIMENSIONS FOR OVENS INSTALLED UNDER COOKTOP

IMPORTANT: Observe all governing codes and ordinances. Cooktop must be approved for use over an oven. See cooktop Installation Instructions for cutout dimensions. Center the cooktop cutout over oven cutout.

To avoid damage to your cabinets, check with your builder or cabinet supplier to make sure that the materials used will not discolor, delaminate or sustain other damage. This oven has been designed in accordance with UL and CSA International and complies with the maximum allowable wood cabinet temperatures of 194°F (90°C).

Approved Built-In Oven and Electric Radiant/Coil Cooktop Combinations



CUTOUT DIMENSIONS

Oven Size	Oven Cutout Dimension
94$\frac{1}{2}$" (61 cm)	22$\frac{1}{2}$" (57.2 cm)
27" (68.6 cm)	26$\frac{1}{2}$" (64.8 cm)
30" (76.2 cm)	28$\frac{1}{2}$" (72.4 cm)
36" (91.4 cm)	34$\frac{1}{2}$" (87.6 cm)

- A. 24" (61 cm) cabinet depth
- B. 25" (63.5 cm) countertop depth
- C. Recommended oven and cooktop junction box locations
- D. Allow $\frac{3}{8}$ " (1.6 cm) for oven trim to overlap on each side.
- E. 27 $\frac{1}{4}$ " (70.5 cm) minimum cutout height
- F. 36" (91.4 cm) from cabinet base to countertop
- G. 4 $\frac{3}{8}$ " (11.7 cm) maximum from cabinet base
- H. See Cutout Dimensions chart.
- I. 31 $\frac{3}{8}$ " (79.7 cm) from top of countertop to bottom of cutout

For the approved model number combinations, refer to the undercounter label located on top of the oven chassis and on the bottom of the cooktop burner box.

NOTE: For undercounter installation, it is recommended that the junction boxes for oven and cooktop be located in the adjacent right or left cabinet. A 1" (2.5 cm) minimum diameter hole should have been drilled in the upper rear right or left corner of the side wall surface to pass the appliance cable through to the junction box.

W10351318A

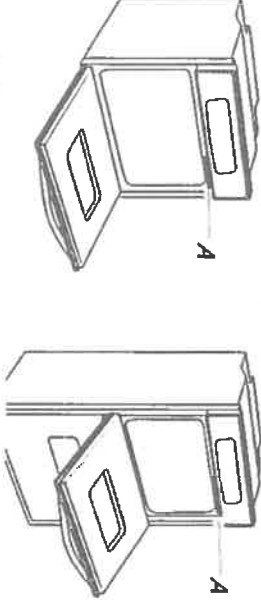
27" (68.6 CM) AND 30" (76.2 CM) ELECTRIC SINGLE AND DOUBLE BUILT-IN OVEN

PRODUCT MODEL NUMBERS

KODE300E	KODT100E	KOST100E
KODE307E	KODT107E	KOST107E
KODE500E	KOSE500E	KEBS109E
KODE507E	KOSE507E	KEBS209E

Electrical: To properly install your oven, you must determine the type of electrical connection you will be using and follow the instructions provided for it here.

- Oven must be connected to the proper electrical voltage and frequency as specified on the model/serial number rating plate. The model/serial number rating plate is located under the control panel on single ovens and under the control panel on the upper oven cavity on double ovens. See the following illustrations.



Single Oven

A. Model/serial number plate

Double Oven

A. Model/serial number plate

- Models rated from 7.3 to 9.6 kW at 240 volts (5.4 to 7.4 kW at 208 volts) require a separate 40-amp circuit. Models rated at 4.8 kW and below at 240 volts (3.6 kW and below at 208 volts) require a separate 20-amp circuit.
 - A circuit breaker is recommended.
 - Connect directly to the circuit breaker box (or fused disconnect) through flexible, armored or nonmetallic sheathed, copper cable (with grounding wire). See "Make Electrical Connection" section.
 - Flexible conduit from the oven should be connected directly to the junction box.
 - Fuse both sides of the line.
 - Do not cut the conduit. The length of conduit provided is for serviceability of the oven.
 - A UL listed or CSA approved conduit connector must be provided.
- If the house has aluminum wiring, follow the procedure below:
1. Connect a section of solid copper wire to the ends of the flexible conduit leads.
 2. Connect the aluminum wiring to the added section of copper wire using special connectors and/or tools designed and UL listed for joining copper to aluminum.

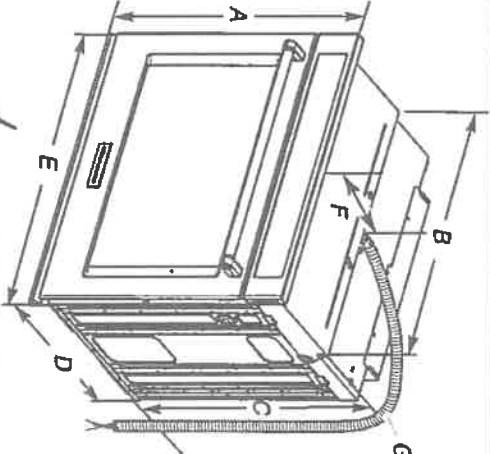
Follow the electrical connector manufacturer's recommended procedure. Aluminum/copper connection must conform with local codes and industry accepted wiring practices.

For power requirements for models KOST107E, KOST100E, KOSE507E, KOSE500E, KODE307E, KODE300E, KODE507E, KODE500E, KODT100E and KODT107E, refer to the following table.

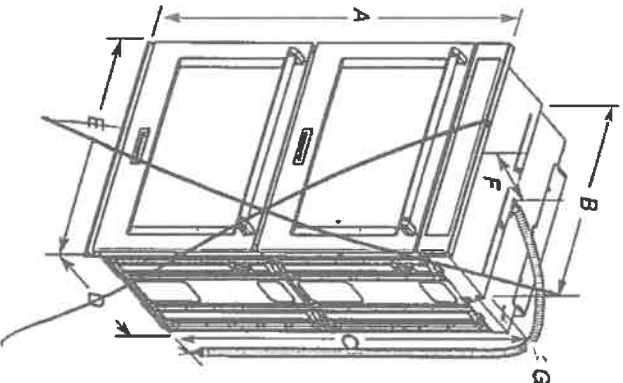
Voltage	Single Thermal	Single Convect	Double Thermal	Double Convect	Double Convec/Thermal
240 VAC	4100 W	4100 W	8163 W	8300 W	8300 W
208 VAC	3100 W	3100 W	6300 W	6300 W	6300 W
240 VAC	17.2 A	17.2 A	34.2 A	34.2 A	34.2 A
208 VAC	15.0 A	15.0 A	29.9 A	29.9 A	29.9 A

Because Whirlpool Corporation includes a continues commitment to improve our products, we reserve the right to change materials and specifications without notice.

PRODUCT DIMENSIONS



- 27" (68.6 cm) models**
- A. 28 3/4" (72.8 cm) max. overall height
 - B. 25 7/8" (64.6 cm) max. recessed width
 - C. 26 3/4" (67.9 cm) recessed height
 - D. 23 1/4" (59.1 cm) max. recessed depth
 - E. 27" (68.6 cm) overall width
 - F. 12" (30.5 cm) from back of control panel to start of strain relief
 - G. 48" (121.9 cm) flexible conduit length
- 30" (76.2 cm) models**
- A. 29 3/4" (72.8 cm) max. overall height
 - B. 28 1/2" (72.4 cm) max. recessed width
 - C. 26 3/4" (67.9 cm) recessed height
 - D. 23 1/4" (59.1 cm) max. recessed depth
 - E. 30" (76.2 cm) overall width
 - F. 12" (30.5 cm) from back of control panel to start of strain relief
 - G. 48" (121.9 cm) flexible conduit length



- 27" (68.6 cm) models**
- A. 51 3/4" (130.0 cm) max. overall height
 - B. 25 7/8" (64.6 cm) max. recessed width
 - C. 48 3/4" (124.0 cm) recessed height
 - D. 23 1/4" (59.1 cm) max. recessed depth
 - E. 27" (68.6 cm) overall width
 - F. 12" (30.5 cm) from back of control panel to start of strain relief
 - G. 66" (167.6 cm) flexible conduit length
- 30" (76.2 cm) models**
- A. 51 3/4" (130.0 cm) max. overall height
 - B. 28 1/2" (72.4 cm) max. recessed width
 - C. 48 3/4" (124.0 cm) recessed height
 - D. 23 1/4" (59.1 cm) max. recessed depth
 - E. 30" (76.2 cm) overall width
 - F. 12" (30.5 cm) from back of control panel to start of strain relief
 - G. 66" (167.6 cm) flexible conduit length

Dimensions are for planning purposes only. For complete details, see installation instructions packed with product. Specifications subject to change without notice.