

CONSTRUCTION SUMMARY OF EXTRAS

Printed 2021-08-26 / 3:24 PM / Page 1 of 1

Site: WASAGA
Lot: 25
Model: DUNE (40-05) ELEV C
Purchaser: KRISTEN M MITCHELL
Purchaser: 0
Phone: 647.500.5056
Email: KRISTEN.MITCHELL98@HOTMAIL.COM



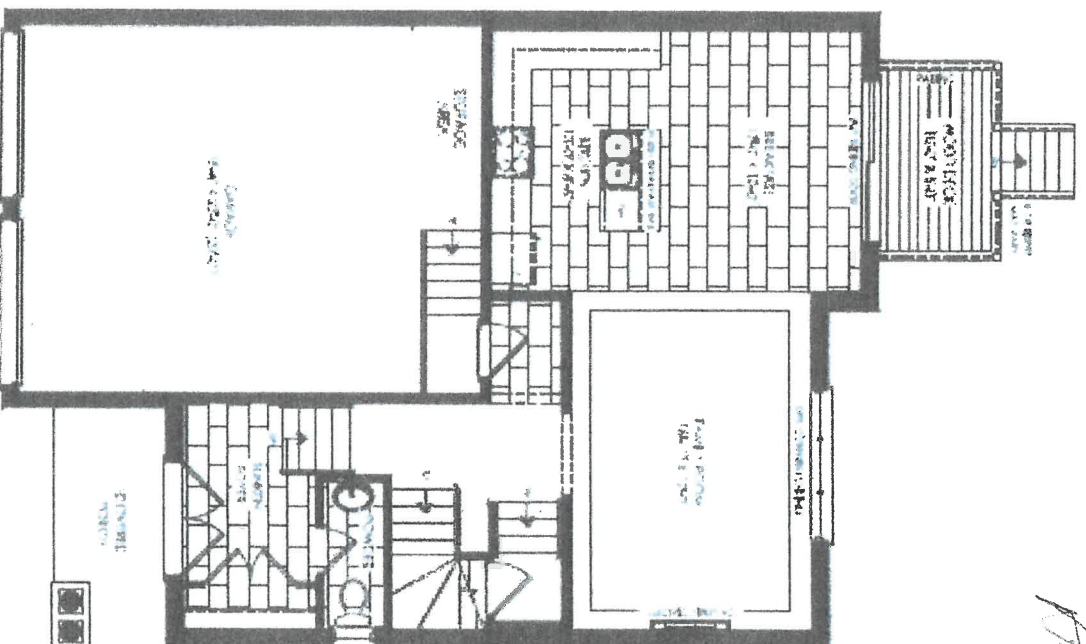
	DESCRIPTION	DATE SELECTED
	BONUS PACKAGE: 3 PIECE STAINLESS STEEL APPLANCES WITH WHITE TOP LOAD WASHER & DRYER	INCLUDED IN APS
	BONUS PACKAGE: STAINLESS STEEL HOOD FAN	INCLUDED IN APS
	STRUCTURALS	
#1	50" DIMPLEX FIREPLACE IN LIEU OF STANDARD. WALL BUILT INTO ROOM APPROX 8" TO ACCOMIDATE- SEE SKETCH	21-Aug-21
#2	EGRESS WINDOW IN BASEMENT APPROX 48" X 48" IF POSSIBLE (WINDOW WELL MAY BE REQUIRED)- SEE SKETCH	21-Aug-21

SHORELINE POINT

W25A5A b AC05

DUNE 40-05

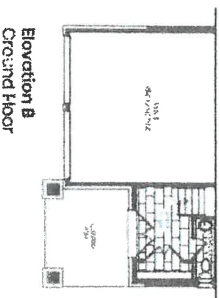
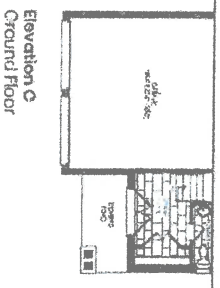
1 of 25
Aug 20/21



50'1"
electric
fireplace

Elevation A
Ground Floor

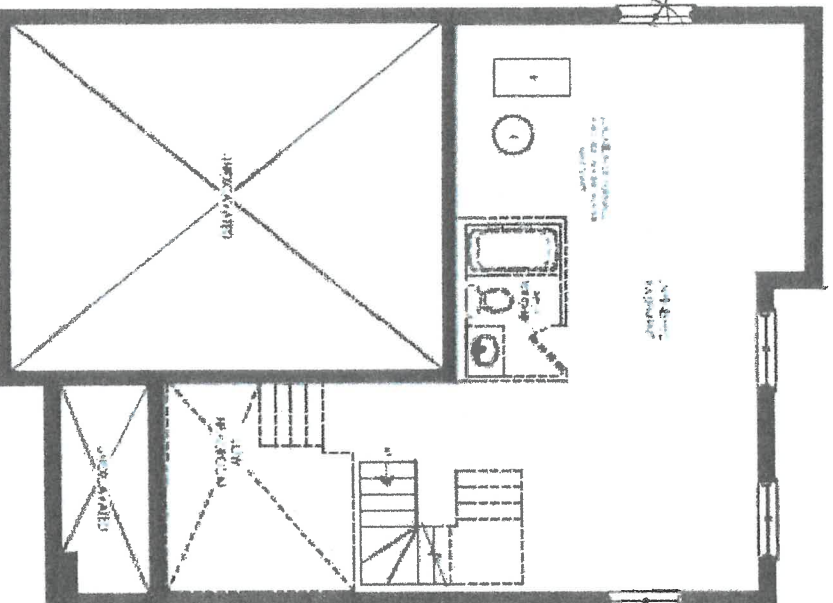
X 100



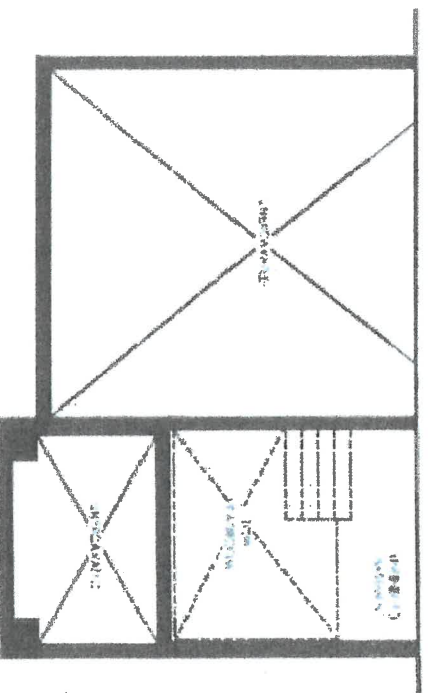
4

Aug 20/21

Express
intraday
if possible



Elevation A & C
Basement



Elevation B
Basement

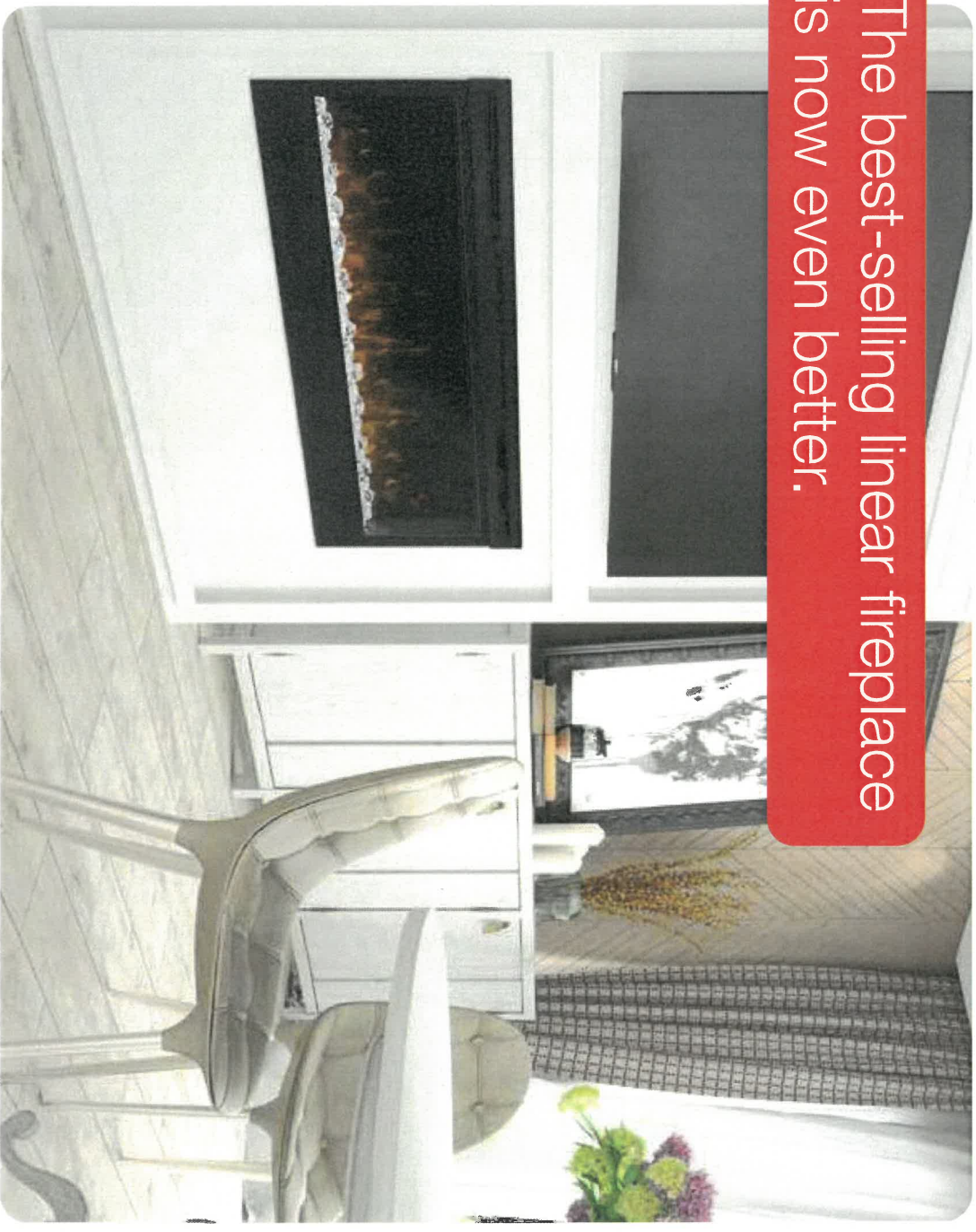





Prism Series
50" Linear Electric Fireplace

BLF5051

The best-selling linear fireplace is now even better.



The best-selling electric linear fireplace just got better with the all new Prism Series. Sparkling with intensity in a full spectrum of colors, the Prism effect illuminates the diamond-like acrylic ice ember bed in a show-stopping effect. Plug-in or hard-wire, hung on the wall or built-in; the Prism Series is beautifully versatile.

 **PRISM**
series

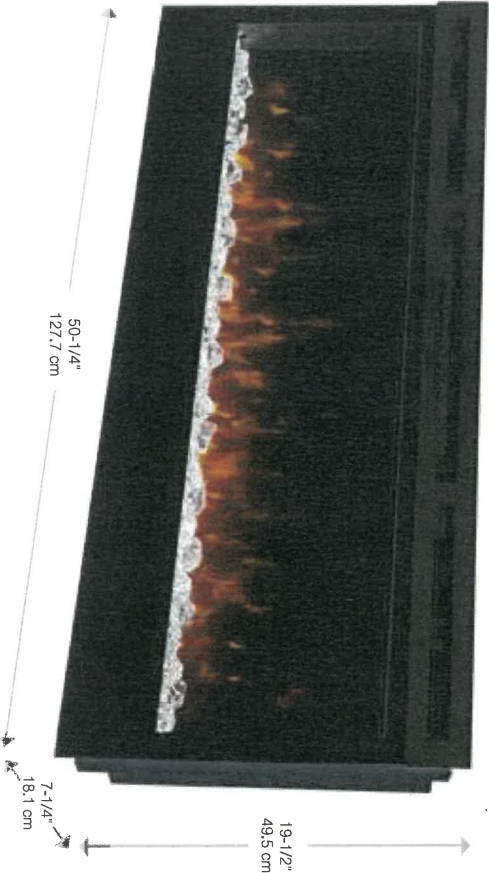
50" Linear



Prism Series

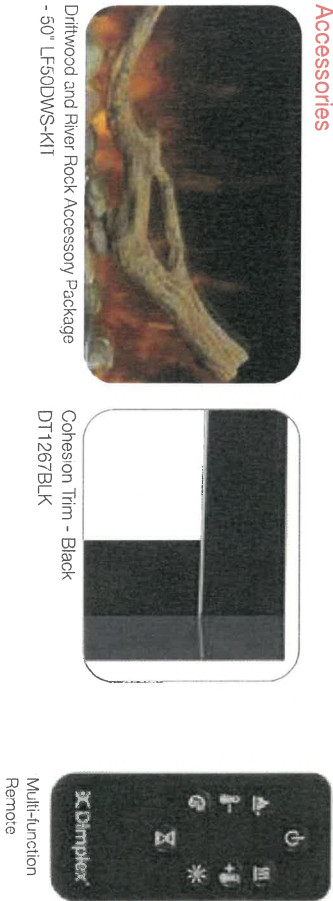
50" Linear Electric Fireplace

BLF50S1



Color Themes

Accessories



120 Volts | 1,230 Watts | 4,197 BTU

Model #	Description	Lbs / Kg	UPC	Wtr ¹	Carton Dimensions (WxHxD)		Cube
					inches	cm	ft ³ m ³
BLF50S1	50" Linear Electric Fireplace	75 / 34.1	781052 098787	2 yr.	55 x 23-1/4 x 12-7/8	139.7 x 58.9 x 32.7	9.5 0.26
DT1267BLK	Cohesion Trim - Black	51 / 23.1	781052 080355	1 yr.	64-7/8 x 26-1/4 x 8-3/4	164.8 x 66.8 x 22.1	8.6 0.24
LF50DWS-KIT	50" Driftwood and River Rock Accessory Kit	7 / 3.17	781052 102842		34-1/4 x 5-7/8 x 8-1/8	87.2 x 14.98 x 20.6	

Specifications, finishes and dimensions are subject to change. ¹Limited warranty. ©2020 Glen Dimplex Americas

Glen Dimplex Americas | 1-800-668-6663 | www.dimplex.com

Features

- The Original Dimplex Flame Effect™**
A blend of technology, artistry and craftsmanship that sets the standard for realism.
- Acrylic Ice Media Bed**
Light plays through different size pieces and sparkle in a spectrum of colors.
- Media Accent Colors**
Choose from a variety of brilliant color themes or cycle through a range of colors using the custom mode, freezing on the hue of your choice.
- Flexible Installation**
Simply surface mount and plug-in or fully-recess and direct wire for a seamless installation
- Hanging Glass Design**
Detachable glass trim easily finishes rough openings and provides access to media.
- Remote Thermostat Control**
Temperature control at your fingertips for convenient comfort.
- Multi-function Remote**
Control the flame, heat and thermostat from the comfort of your chair.
- LED Lighting**
Flame and lights use brilliant, low-energy LEDs that require zero maintenance.
- All-season Flames**
Enjoy the unique charm of a fireplace 365 days a year using the flames without the heat.
- Cool-touch Glass**
Glass remains cool making it safe for any location and any user.
- Low Carbon Footprint**
The most sustainable fireplace option, no emissions and 100% efficient.

SE-022-R06-041520

Handwritten signature: J. C. Wadsworth

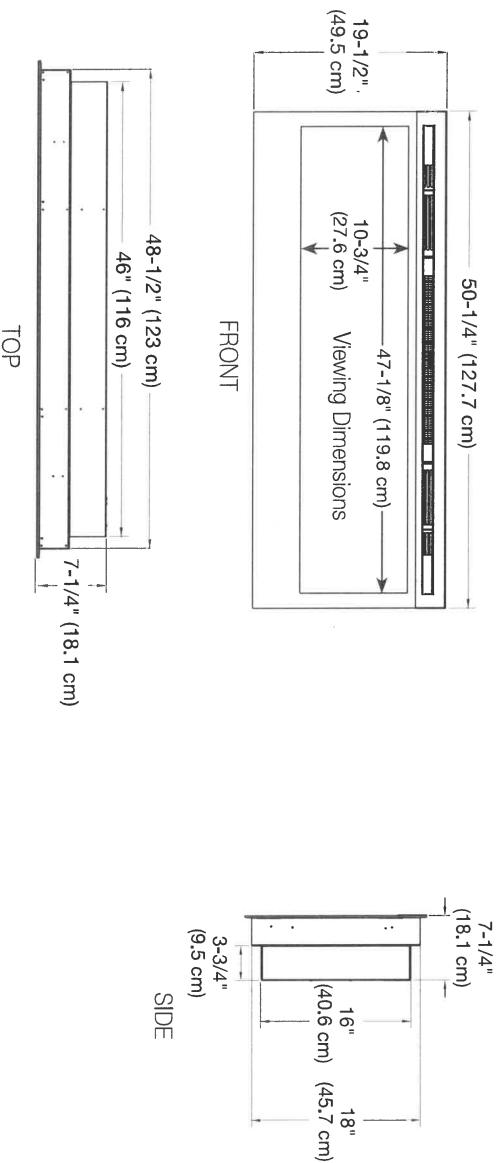


Prism Series

50" Linear Electric Fireplace

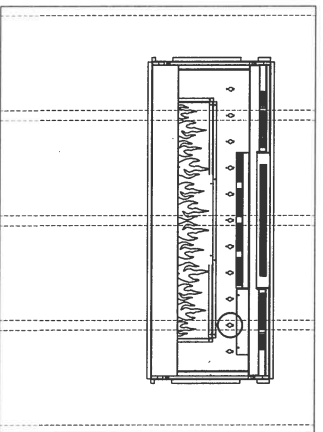
BLF5051

Product Dimensions:



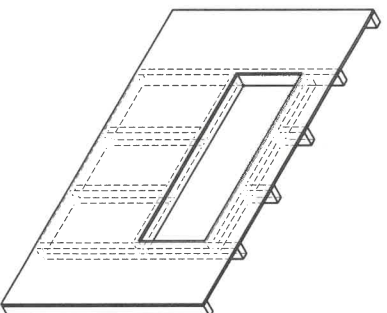
Installation Options and Framing Dimensions

3 Mounting Options



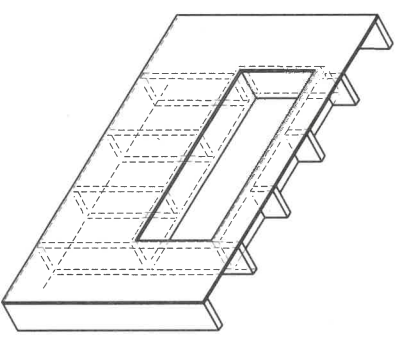
ON WALL

Must mount to a minimum of three (3) wall studs



PARTIAL RECESSED

2 X 4 Wall Construction
Framing dimensions:
46-1/2" W x 16-1/2" H
(118.1 cm) W x (42 cm) H



FULLY RECESSED

2 X 8 Wall Construction
Framing dimensions:
49" W x 18-1/2" H
(124.5 cm) W x (47 cm) H

Handwritten signature: J. Wadsworth