

## Bottom Mount Refrigerator

### PRODUCT MODEL NUMBERS

KRFC302E

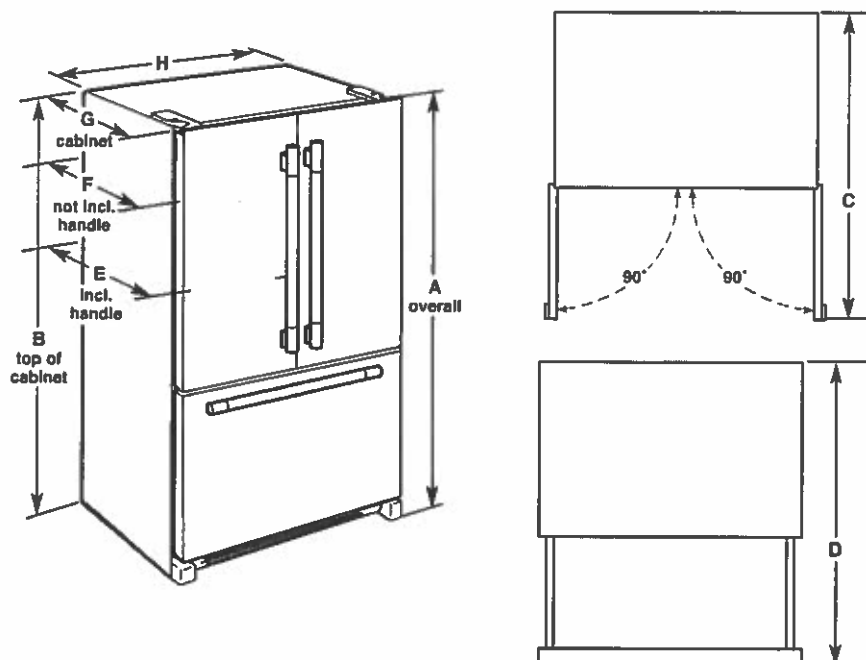
**Electrical:** A 115 volt, 60 Hz, AC only 15- or 20-amp fused, grounded electrical supply is required. It is recommended that a separate circuit serving only your refrigerator and approved accessories be provided. Use an outlet that cannot be turned off by a switch. Do not use an extension cord.

**Water:** A cold water supply with water pressure of between 35 and 120 psi (241 and 827 kPa) is required to operate the water dispenser and ice maker. If you have questions about your water pressure, call a licensed, qualified plumber.

#### Reverse Osmosis Water Supply:

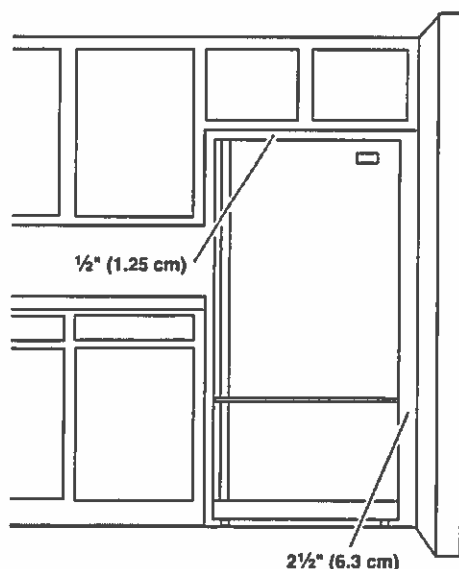
**IMPORTANT:** The pressure of the water supply coming out of a reverse osmosis system going to the water inlet valve of the refrigerator needs to be between 35 and 120 psi (241 and 827 kPa).

### PRODUCT DIMENSIONS



Model Size	Height - Overall "A"	Height - Top of Cabinet "B"	Depth - Doors Open 90° "C"	Depth - Drawer Open "D"	Depth - With Handles "E"	Depth - Without Handles "F"	Depth - Cabinet Only "G"	Width - Cabinet "H"
21.9	72" (182.9 cm)	71 3/8" (181.3 cm)	44 1/8" (112.1 cm)	45 1/4" (114.9 cm)	30 1/4" (76.8 cm)	27 3/4" (70.5 cm)	24 5/8" (62.5 cm)	35 3/4" (90.8 cm)

### LOCATION REQUIREMENTS



**IMPORTANT:** This refrigerator is designed for indoor, household use only.

To ensure proper ventilation for your refrigerator, allow for 1/2" (1.25 cm) of space on each side and at the top. Allow for 1" (2.54 cm) of space behind the refrigerator. If your refrigerator has an ice maker, allow extra space at the back for the water line connections. When installing your refrigerator next to a fixed wall, leave 2 1/2" (6.3 cm) minimum on the hinge side (some models require more) to allow for the door to swing open.

**NOTE:** This refrigerator is intended for use in a location where the temperature ranges from a minimum of 55°F (13°C) to a maximum of 110°F (43°C). The preferred room temperature range for optimum performance, which reduces electricity usage and provides superior cooling, is between 60°F (15°C) and 90°F (32°C). It is recommended that you do not install the refrigerator near a heat source, such as an oven or radiator.

# KitchenAid® 30" (76.2 CM) ELECTRIC INDUCTION COOKTOP

## PRODUCT MODEL NUMBERS

KICU500X

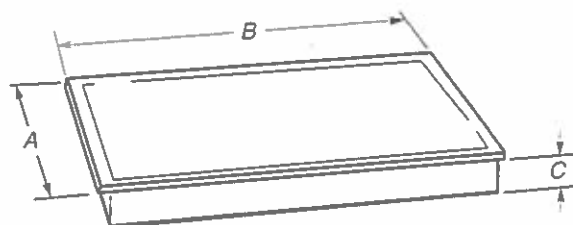
## ELECTRICAL REQUIREMENTS:

To properly install your cooktop, you must determine the type of electrical connection you will be using and follow the instructions provided for it here.

- A 4-wire or 3-wire, single phase, 240 volt, 60 Hz., AC only electrical supply is required on a separate, 40-amp circuit (30" (76.2 cm) models), fused on both sides of the line.
- The cooktop should be connected directly to the junction box through flexible, armored or nonmetallic sheathed, copper cable. The flexible, armored cable extending from the fuse box or circuit breaker box should be connected directly to the junction box.
- Locate the junction box to allow as much slack as possible between the junction box and the cooktop so that the cooktop can be moved if servicing becomes necessary in the future.
- Do not cut the conduit. The length of conduit provided is for serviceability of the cooktop.
- A UL listed or CSA approved conduit connector must be provided at each end of the power supply cable (at the cooktop and at the junction box). A listed conduit connector is already provided at the cooktop.

## PRODUCT DIMENSIONS

### 30" (76.2 cm) Cooktops

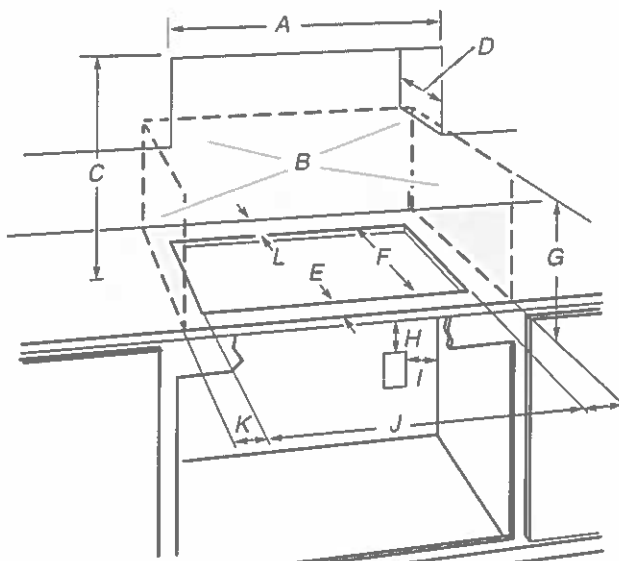


#### Model KICU500

- A. 21 $\frac{1}{8}$ " (54.1 cm)
- B. 30 $\frac{3}{4}$ " (78.2 cm)
- C. 2 $\frac{3}{8}$ " (6.0 cm)

## CABINET DIMENSIONS

**IMPORTANT:** If installing a range hood or microwave hood combination above the range, follow the range hood or microwave hood combination installation instructions for dimensional clearances above the cooktop surface.



- A. 29 $\frac{1}{2}$ " (75.0 cm) on 30" (76.2 cm) models
- B. Combustible area above countertop (shown by dashed box above)
- C. 30" (76.2 cm) minimum clearance between top of cooktop platform and bottom of uncovered wood or metal cabinet (24" (61 cm) minimum clearance if bottom of wood or metal cabinet is covered by not less than  $\frac{1}{4}$ " (0.6 cm) flame retardant millboard covered with not less than No. 28 MSG sheet steel, 0.015" (0.04 cm) stainless steel, or 0.024" (0.06 cm) aluminum or 0.020" (0.05 cm) copper)
- D. 13" (33.0 cm) recommended upper cabinet depth
- E. 2" (5.1 cm)
- F. 19 $\frac{5}{16}$ " (49.0 cm)
- G. 18" (45.7 cm) minimum clearance from upper cabinet to countertop within minimum horizontal clearances to cooktop
- H. Junction box or outlet; 12" (30.5 cm) minimum from bottom of countertop
- I. Junction box or outlet; 10" (25.4 cm) from right-hand side of cabinet
- J. 29 $\frac{1}{2}$ " (75.0 cm) on 30" (76.2 cm) models
- K. 1" (2.5 cm) minimum distance to nearest left and right side combustible surface above cooktop
- L. 1" (2.5 cm) minimum clearance between back wall and countertop

**NOTES:** After you make the countertop cutout, some installations may require notching down the base cabinet side walls to clear the cooktop base. To avoid this modification, use a base cabinet with sidewalls wider than the cutout.

If cabinet has a drawer, a 5 $\frac{1}{8}$ " (13 cm) depth clearance from the countertop to the top of the drawer (or other obstruction) in base cabinet is required.

# KitchenAid® 27" (68.6 cm) and 30" (76.2 cm) Electric Built-In Microwave/Oven Combination

## PRODUCT MODEL NUMBERS

KEMS309E

KOCE500E

KOCE507E

## ELECTRICAL CONNECTION

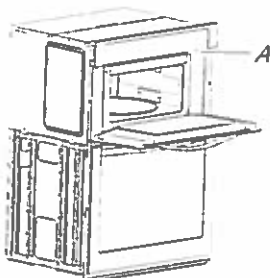
If codes permit and a separate ground wire is used, it is recommended that a qualified electrical installer determine that the ground path and the wire gauge are in accordance with local codes. Check with a qualified electrical installer if you are not sure the oven is properly grounded.

This oven must be connected to a grounded metal, permanent wiring system.

Be sure that the electrical connection and wire size are adequate and in conformance with the National Electrical Code, ANSI/NFPA 70-latest edition or CSA Standards C22.1-94, Canadian Electrical Code, Part 1 and C22.2 No. 0-M91-latest edition, and all local codes and ordinances.

To properly install your oven, you must determine the type of electrical connection you will be using and follow the instructions provided for it here.

- Oven must be connected to the proper electrical voltage and frequency as specified on the model/serial/rating plate. See the following illustration.



A. Model/serial/rating plate

- Models rated from 7.3 to 9.6 kW at 240 volts (5.4 to 7.4 kW at 208 volts) require a separate 40-amp circuit. Models rated at 4.8 kW and below at 240 volts (3.6 kW and below at 208 volts) require a separate 30-amp circuit.
- A circuit breaker is recommended.
- Connect directly to the fused disconnect (or circuit breaker box) through flexible, armored or nonmetallic sheathed, copper cable (with grounding wire). See "Make Electrical Connection" section.
- Flexible conduit from the oven should be connected directly to the junction box.
- Do not cut the conduit. The length of conduit provided is for serviceability of the oven.
- A UL listed or CSA approved conduit connector must be provided.
- If the house has aluminum wiring, follow the procedure below:
  - Connect a section of solid copper wire to the pigtail leads.
  - Connect the aluminum wiring to the added section of copper wire using special connectors and/or tools designed and UL listed for joining copper to aluminum.

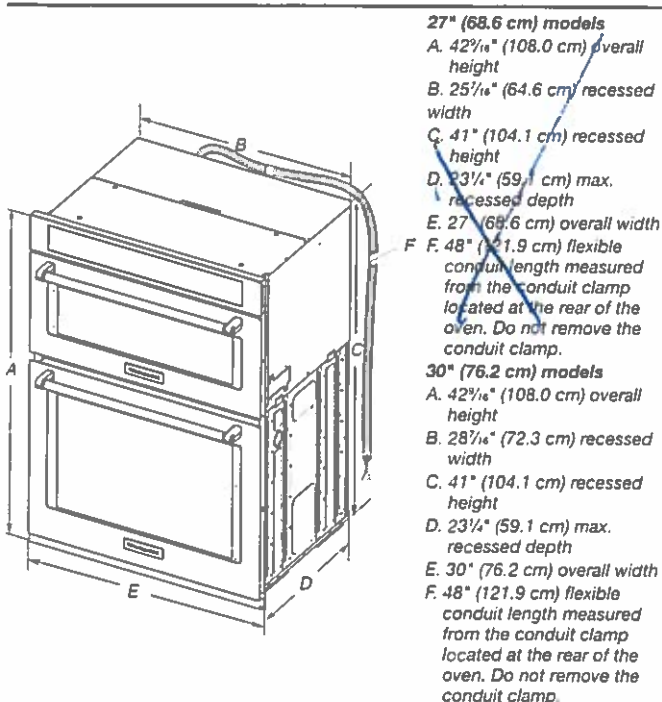
Follow the electrical connector manufacturer's recommended procedure. Aluminum/copper connection must conform with local codes and industry accepted wiring practices.

For power requirements, refer to the following table.

Model	Voltage	Amperage (L1)*	Amperage (L2)*	Rating (W)
KOCE507E/KOCE500E	120/240	32	30	8000
KOCE507E/KOCE500E	120/208	30	28	6600

\*Amperage values noted above are for information purposes only; the units are rated in watts.

## PRODUCT DIMENSIONS



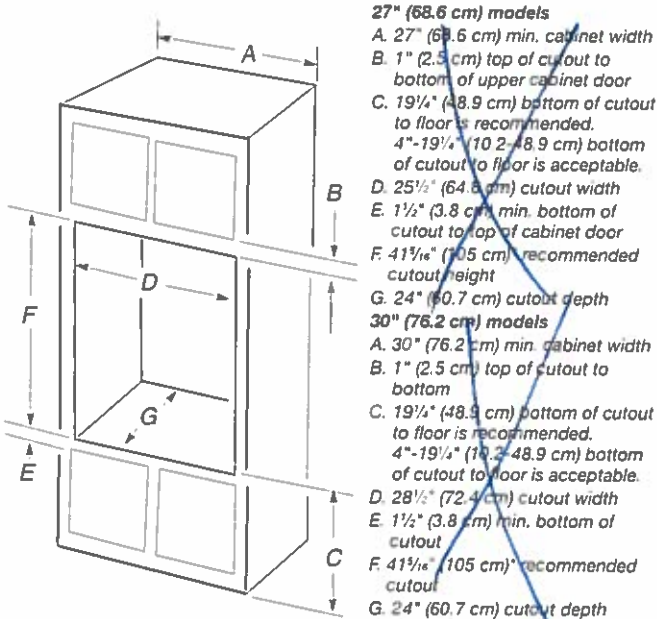
### 27" (68.6 cm) models

- A. 42<sup>1</sup>/<sub>8</sub>" (108.0 cm) overall height
- B. 25<sup>1</sup>/<sub>8</sub>" (64.6 cm) recessed width
- C. 41" (104.1 cm) recessed height
- D. 23<sup>1</sup>/<sub>4</sub>" (59.1 cm) max. recessed depth
- E. 27" (68.6 cm) overall width
- F. 48" (121.9 cm) flexible conduit length measured from the conduit clamp located at the rear of the oven. Do not remove the conduit clamp.

### 30" (76.2 cm) models

- A. 42<sup>1</sup>/<sub>8</sub>" (108.0 cm) overall height
- B. 28<sup>1</sup>/<sub>8</sub>" (72.3 cm) recessed width
- C. 41" (104.1 cm) recessed height
- D. 23<sup>1</sup>/<sub>4</sub>" (59.1 cm) max. recessed depth
- E. 30" (76.2 cm) overall width
- F. 48" (121.9 cm) flexible conduit length measured from the conduit clamp located at the rear of the oven. Do not remove the conduit clamp.

## Cabinet Dimensions



### 27" (68.6 cm) models

- A. 27" (68.6 cm) min. cabinet width
- B. 1" (2.5 cm) top of cutout to bottom of upper cabinet door
- C. 19<sup>1</sup>/<sub>4</sub>" (48.9 cm) bottom of cutout to floor is recommended. 4"-19<sup>1</sup>/<sub>4</sub>" (10.2-48.9 cm) bottom of cutout to floor is acceptable.
- D. 25<sup>1</sup>/<sub>8</sub>" (64.6 cm) cutout width
- E. 1<sup>1</sup>/<sub>2</sub>" (3.8 cm) min. bottom of cutout to top of cabinet door
- F. 41<sup>1</sup>/<sub>8</sub>" (105 cm) recommended cutout height
- G. 24" (60.7 cm) cutout depth

### 30" (76.2 cm) models

- A. 30" (76.2 cm) min. cabinet width
- B. 1" (2.5 cm) top of cutout to bottom
- C. 19<sup>1</sup>/<sub>4</sub>" (48.9 cm) bottom of cutout to floor is recommended. 4"-19<sup>1</sup>/<sub>4</sub>" (10.2-48.9 cm) bottom of cutout to floor is acceptable.
- D. 28<sup>1</sup>/<sub>8</sub>" (72.4 cm) cutout width
- E. 1<sup>1</sup>/<sub>2</sub>" (3.8 cm) min. bottom of cutout
- F. 41<sup>1</sup>/<sub>8</sub>" (105 cm) recommended cutout
- G. 24" (60.7 cm) cutout depth

\* NOTE: The cabinet height can be between 41" (104.1 cm) and 41<sup>1</sup>/<sub>2</sub>" (105.6 cm) for microwave/oven combination.

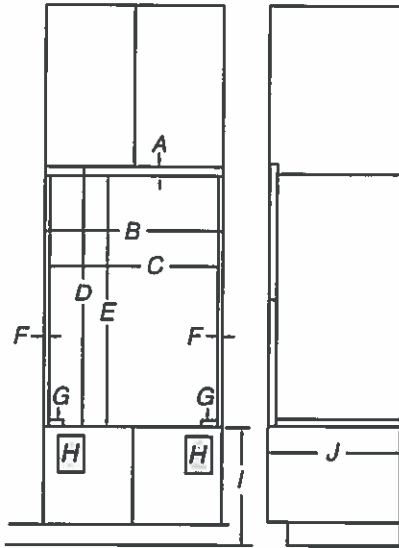
SEE FLUSH INSTALLATION SPEC

## Cabinet Dimensions - Flush Installations

A 25 $\frac{3}{8}$ " (64.4 cm) minimum cutout depth is required.

These dimensions will result in a  $\frac{1}{4}$ " (6 mm) reveal on the top, a  $\frac{1}{4}$ " (6 mm) reveal on the sides, and a  $\frac{1}{8}$ " (3 mm) reveal on the bottom of the wall oven.

The front face of the cleats and platform will be visible and should be treated as a finished surface.



Front View

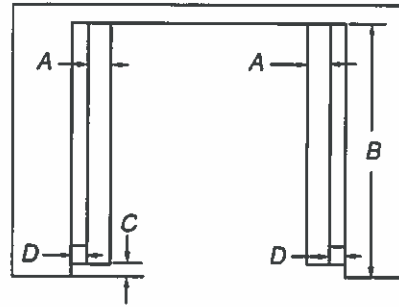
Side View

### 27" (68.6 cm) Models

- A.  $\frac{5}{8}$ " (16 mm) top cleat\*
- B. 27  $\frac{1}{2}$ " (69.2 cm) minimum width of flush inset cutout
- C. 25  $\frac{3}{8}$ " (65.7 cm) minimum width of opening
- D. 43  $\frac{1}{8}$ " (109.5 cm) minimum height of flush inset cutout
- E. 42  $\frac{1}{2}$ " (107.9 cm) recommended cutout height
- F.  $\frac{1}{8}$ " (17 mm) side cleat\*
- G.  $\frac{1}{2}$ " x 2" (13 mm x 5.1 cm) spacer the entire depth of the cutout\*
- H. Recommended junction box location
- I. 4  $\frac{5}{8}$ " - 19  $\frac{1}{4}$ " (11.7 - 48.9 cm) bottom of cutout to floor
- J. 25  $\frac{3}{8}$ " (64.4 cm) minimum depth of cutout

### 30" (76.2 cm) Models

- A.  $\frac{5}{8}$ " (16 mm) top cleat\*
- B. 30  $\frac{1}{4}$ " (76.8 cm) minimum width of flush inset cutout
- C. 28  $\frac{7}{8}$ " (73.3 cm) minimum width of opening
- D. 43  $\frac{1}{8}$ " (109.5 cm) minimum height of flush inset cutout
- E. 42  $\frac{1}{2}$ " (107.9 cm) recommended cutout height
- F.  $\frac{1}{8}$ " (17 mm) side cleat\*
- G.  $\frac{1}{2}$ " x 2" (13 mm x 5.1 cm) spacer the entire depth of the cutout\*
- H. Recommended junction box location
- I. 4  $\frac{5}{8}$ " - 19  $\frac{1}{4}$ " (11.7 - 48.9 cm) bottom of cutout to floor
- J. 25  $\frac{3}{8}$ " (64.4 cm) minimum depth of cutout



Top View

### 27" (68.6 cm) Models

- A.  $\frac{1}{2}$ " x 2" (13 mm x 5.1 cm) spacer the entire depth of the cutout\*
- B. 25  $\frac{3}{8}$ " (64.4 cm) depth of cutout
- C. 1  $\frac{3}{8}$ " (3.5 cm) recess from front of cabinet
- D.  $\frac{1}{8}$ " (17 mm) side cleat\*

### 30" (76.2 cm) Models

- A.  $\frac{1}{2}$ " x 2" (13 mm x 5.1 cm) spacer the entire depth of the cutout\*
- B. 25  $\frac{3}{8}$ " (64.4 cm) depth of cutout
- C. 1  $\frac{3}{8}$ " (3.5 cm) recess from front of cabinet
- D.  $\frac{1}{8}$ " (17 mm) side cleat\*

\*Cleats and spacers must be recessed 1  $\frac{3}{8}$ " (3.5 cm) from the front of the cabinet.

\*Cleats and spacers must be recessed 1  $\frac{3}{8}$ " (3.5 cm) from the front of the cabinet.

# BUILT-IN OVEN SAFETY

## Your safety and the safety of others are very important.

We have provided many important safety messages in this manual and on your appliance. Always read and obey all safety messages.



This is the safety alert symbol.

This symbol alerts you to potential hazards that can kill or hurt you and others.

All safety messages will follow the safety alert symbol and either the word "DANGER" or "WARNING."

These words mean:

**⚠ DANGER**

You can be killed or seriously injured if you don't Immediately follow instructions.

**⚠ WARNING**

You can be killed or seriously injured if you don't follow instructions.

All safety messages will tell you what the potential hazard is, tell you how to reduce the chance of injury, and tell you what can happen if the instructions are not followed.

## INSTALLATION REQUIREMENTS

### Tools and Parts

Gather the required tools and parts before starting installation. Read and follow the instructions provided with any tools listed here.

#### Tools Needed

- Phillips screwdriver
- Measuring tape
- Drill (for wall cabinet installations)
- 1/8" (3 mm) drill bit (for wall cabinet installations)
- Level
- Flat-blade screwdriver

#### Parts Needed

- (4) #8-14 x 1" screws
- (2) #8-18 x 3/8" screws - bottom vent included with built-in oven
- Bottom vent included with built-in oven

#### Parts Supplied

- Deflector bracket



- (2) Plastic spacers



- #8-18 x 1/4" screws - (2) for 27" (68.6 cm) models; (4) for 30" (76.2 cm) models - deflector bracket
- (4) #8-18 x 3/8" screws - oven feet
- (2) feet
- (2) front feet

### Location Requirements

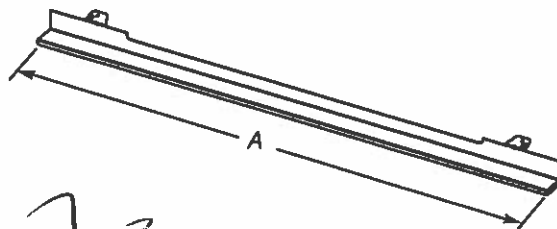
**IMPORTANT:** Observe all governing codes and ordinances.

**NOTE:** Refer to the following "Location Requirements" and the "Location Requirements" section of the Installation Instructions provided with your built-in oven.

- Cabinet opening dimensions that are shown must be used. Given dimensions provide minimum clearance for the oven.
- The recessed installation area must provide complete enclosure around the recessed portion of the oven.
- The oven support surface must be solid, level and flush with the bottom of the cabinet cutout.
- The floor must be able to support a total weight (microwave and built-in oven) of 208 lbs (95 kg) for 27" (68.6 cm) models or 249 lbs (113 kg) for 30" (76.2 cm) models.

**IMPORTANT:** To avoid damage to your cabinets, check with your builder or cabinet supplier to make sure that the materials used will not discolor, delaminate or sustain other damage. This oven has been designed in accordance with the requirements of UL and CSA International and complies with the maximum allowable wood cabinet temperatures of 194°F (90°C).

#### Deflector Bracket Dimensions



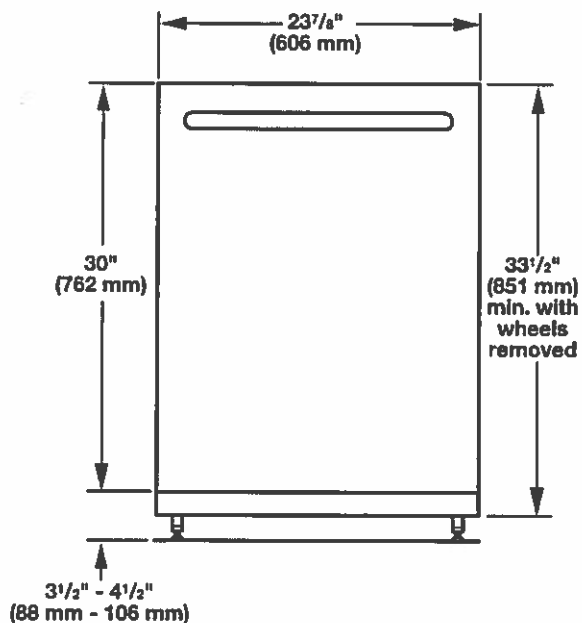
27" (68.6 cm) Models

A. 26 1/4" (66.4 cm) overall width

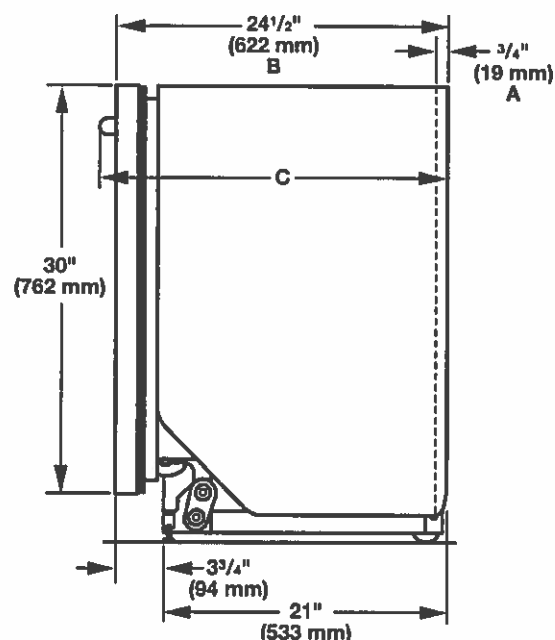
30" (76.2 cm) Models

A. 29 1/4" (74.0 cm) overall width

## Product and Cabinet Opening Dimensions

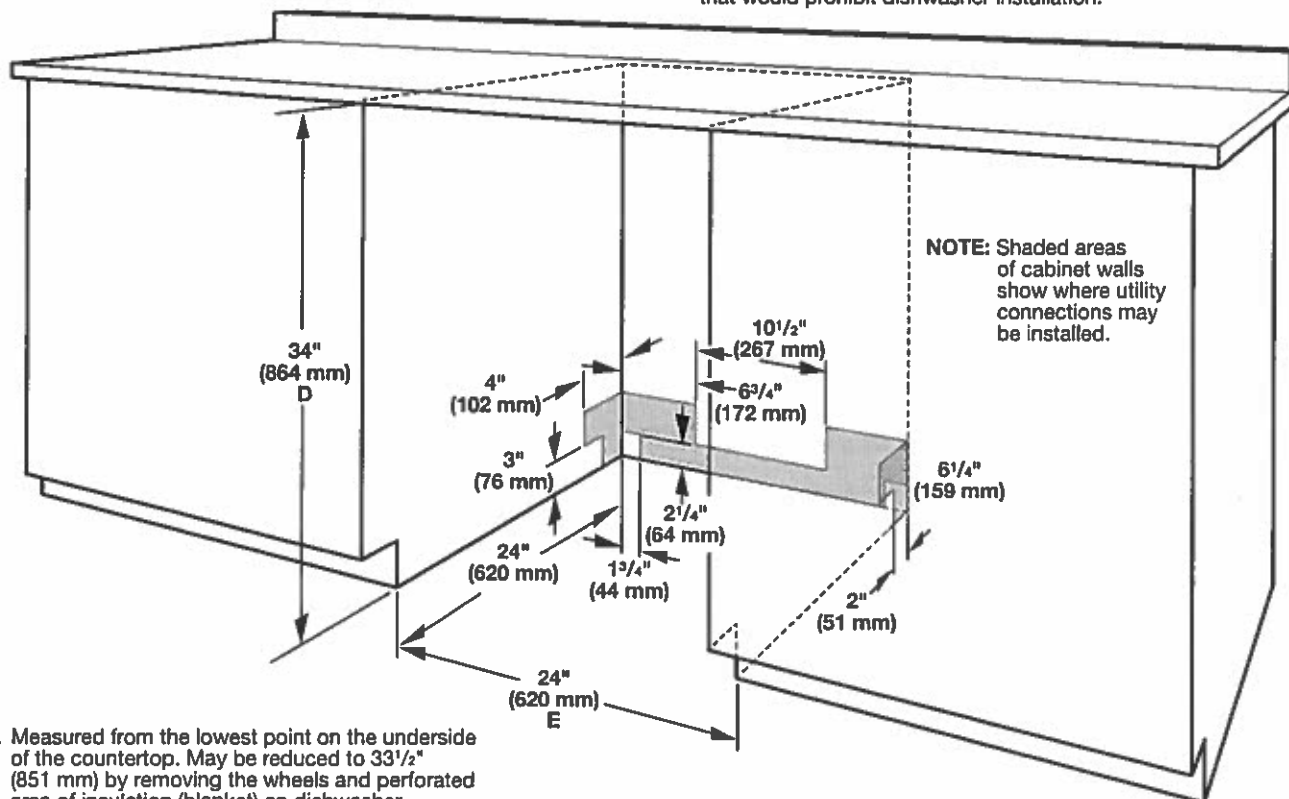


For 4" (100 mm) toe kick, height of cabinet opening is  $34\frac{1}{2}"$  (863 mm).



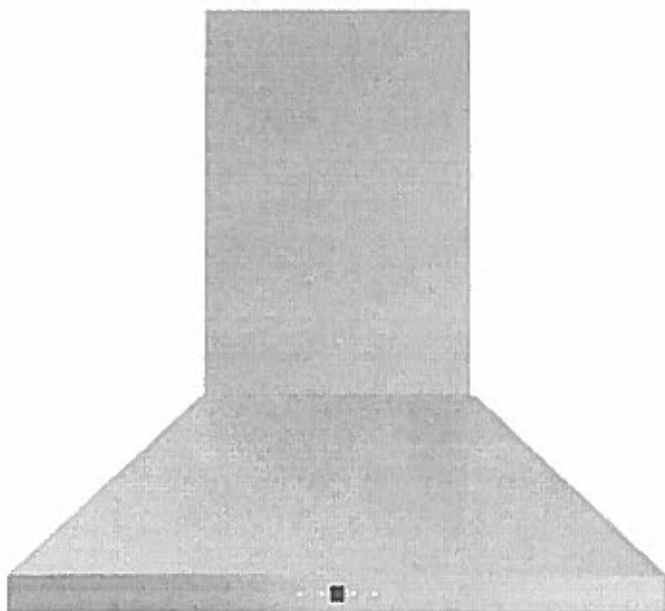
- A. Insulation may be compressed (not used on all models).
- B. For panel-ready models, dishwasher depth is 24" (610 mm), not including the  $\frac{3}{4}"$  (19 mm) custom door panel.
- C. Door handles may protrude forward of the face of the dishwasher, varies by model.

Check that all surfaces have no protrusions that would prohibit dishwasher installation.



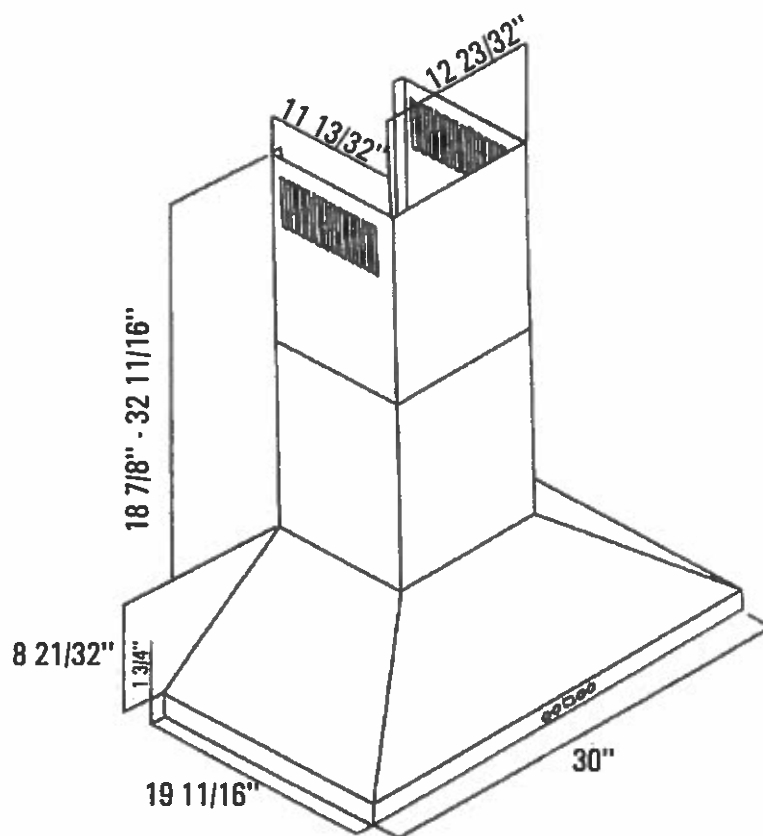
NOTE: Shaded areas of cabinet walls show where utility connections may be installed.

- D. Measured from the lowest point on the underside of the countertop. May be reduced to  $33\frac{1}{2}"$  (851 mm) by removing the wheels and perforated area of insulation (blanket) on dishwasher.
- E. Minimum, measured from narrowest point of opening

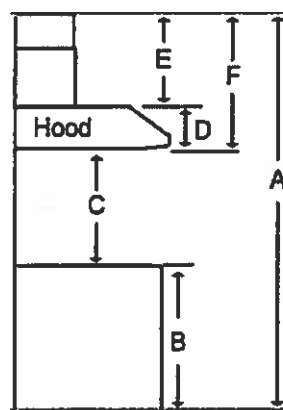


Model	
AVO-308CS	
Dimensions	
Dimensions	29 1/2" (W) x 19 3/4" (D) x 10 1/4" (H)
Exterior Appearance	
Stainless steel grade	201
Features	
Control	Soft touch with LED display
Lighting	2 bulbs, 3W LED (bulbs included)
Blower type	860 CFM, 6-Speed
Blower performance	Speed 1, 1.5 sones
	Speed 6, 5.0 sones
Filter type	2 Stainless steel baffle filters (included)
Duct transition	6" Round (Top)
Ducting	Ducted
Electrical Requirements	
Electrical requirements	120V / 60Hz / 2.7 Amps
Warranty	
1-year Warranty	Parts and labour, in-home service

## Dimensions



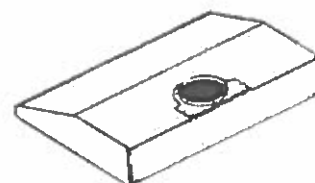
## Installation



A	Floor to ceiling Height	TBD
B	Floor to counter Top Height (standard)	36"
C	Recommended Height between cooking surface and bottom of the hood	26" min - 30" max
D	Hood Height	29 5/16" to 43 3/32"
E	Cabinet Height	TBD

## Duct transition

6" Round (Top)



*The information contained herein is based on sources that we believe to be reliable, but is not guaranteed by us, may be incomplete or may change without notice*



# ELECTRIC DRYERS

## DLEX7600KE

### Performance

- 7.3 cu.ft. Mega Capacity with NeveRust™ Stainless Steel Drum

### Intelligent Fabric Care

- TurboSteam™ Technology
- SteamFresh™ Cycle
- SteamSanitary™ Cycle
- ReduceStatic™ Option
- Sensor Dry System for Intelligent Fabric Care and Energy Efficiency
- Precise Temperature Control with Variable Heat Source
- 14 Drying Programs
- 5 Temperature Settings
- Wrinkle Care Option
- Anti-Bacterial Cycle
- Custom Program

### Style and Design

- EasyLoad™ Door
- Electronic Control Panel with LED Display and Dial-A-Cycle™
- Touch Buttons
- Chrome Edged Diamond Glass Door

### Technology Benefits

- LoDecibel™ Quiet Operation
- NFC Tag On™
- SmartDiagnosis™
- 3 Minute Installation Check
- FlowSense™ Duct Clogging Indicator



Black Stainless Steel



## Mega Capacity

Do laundry a little less often. With **7.3 cubic feet** of capacity, this dryer handles really large loads. Saving you time and energy.

## EasyLoad™ Door

The dual-opening options of the LG EasyLoad™ door make loading and unloading the dryer easier than ever. Transferring wet clothes from the washer? Simply press the release button and pull the door down, hamper style to keep that stray sock from hitting the floor. Removing dry items? Swing the door to the side to clear the way for your basket below. Even tight spaces and challenging laundry-room layouts are no match for versatility like this.

## PRODUCT FEATURES

TYPE	
Front Loader	•
Design Lock	Rear Control
Intelligent Electronic Control with LED Display	•
Touch Buttons	•
Capacity	7.3 cu.ft.
DRYING PROGRAMS	
14 Programs	Cotton/Normal, Perm. Press/ Casual, Heavy Duty, Bulky Bedding, Delicates, Anti-Bacterial, Towels, Small Load, Sports Wear, Steam Fresh™, SteamSanitary™, Speed Dry, Air Dry, Download
9 Options	More Time, Less Time, Wrinkle Care, Custom Program, Child Lock, ReduceStatic™, EasyIron™, End of Cycle Signal, Energy Saver
5 Temperature Settings	High, Medium High, Medium, Low, Ultra Low
5 Drying Levels	Very Dry, More Dry, Normal Dry, Less Dry, Damp Dry
Dry Times	60 min., 50 min., 40 min., 30 min., 20 min., More Time/Less Time
FABRIC CARE FEATURES	
SteamFresh™ Cycle	•
SteamSanitary™ Cycle	•
ReduceStatic™ Option	•
Sensor Dry	•
Precise Temperature Control and Variable Heater	•
CONVENIENCE FEATURES	
SmartDiagnosis™	•
FlowSense™ Duct Clogging Indicator	•
Anti-Bacterial Cycle	•
Wrinkle Care Option	•
Remaining Time Display/Status Indicators	•
End of Cycle Signal	•
Child Lock	•
Drum Light	•
NFC Tag On™	•
Reversible Door	•
Leveling Legs	4 Adjustable Legs
Venting Option	4 Way Venting
3 Minute Installation Check	•
LoDecibel™ Quiet Operation	•

## Steam Sanitary™ Cycle

Wash the unwashable. You probably wish you could clean your throw pillows or children's toys. With the **SteamSanitary™ Cycle**, you can. It uses steam to safely sanitize items marked as non-washable.

## Accurate Drying

LG's **Sensor Dry System** measures the moisture levels during the cycle and automatically adjusts the drying time, assuring you get dry laundry every time.

## Call, Connect, Resolve

**SmartDiagnosis™** uses self-diagnosing technology that can communicate 24/7 with LG customer service over the telephone providing you with comfort and reliability.

MATERIALS AND FINISHES	
NeveRust™ Stainless Steel Drum	•
Cabinet	Painted Steel
Control Panel	Plastic
Door/Rim	Glass & Chrome (Hairline) / Chrome
Available Colour	Black Stainless Steel
POWER SOURCE	
Ratings	CSA Listed
Electrical Requirements	240V, 30 Amps
DIMENSIONS	
Product (WxHxD)	27" x 45 7/16" x 28 15/16" (50 1/4" D with door open)
Carton (WxHxD)	29 1/2" x 48" x 31 1/4"
Weight (Product/Carton)	129.8 lbs / 149.6 lbs
UPC CODES	
DLEX7600KE	772454 067747
WARRANTY	
1 Year Parts and Labour	



LG ELECTRONICS CANADA INC.

20 Norelco Drive, North York, Ontario M9L 2X6

Tel: 647-253-6300 | LG.com

Customer Service & Parts

1-888-542-2623

Design, features and specifications are subject to change without notice.  
Non-metric weights and measurements are approximate.  
All trademarks are property of their respective owners.

Printed in June 2016

# TOP LOAD WASHERS

## WT7600HKA

### Performance

- Mega Capacity 6.0 cu.ft. with NeveRust™ Stainless Steel Drum (IEC)
- DirectDrive™ Motor for the Ultimate in Durability and Reliability with 10 Year Warranty
- 950 RPM Powerful Spin for Efficient Water Extraction

### Intelligent Fabric Care

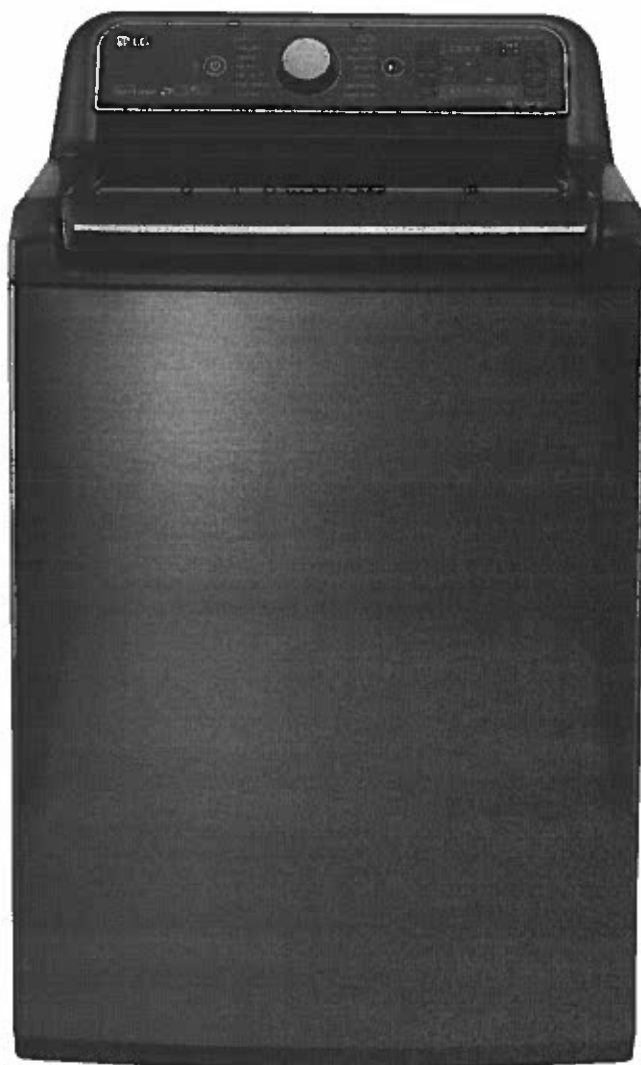
- TurboWash™ 2.0 Technology
- Steam Technology
- ASC Certified Allergiene™ Cycle
- NSF Certified Sanitary Cycle
- ColdWash™ Technology
- 6Motion™ Technology
- SmartRinse™ Jey Spray System
- SenseClean™ System for Intelligent Fabric Care
- 14 Washing Programs, 14 Options
- 5 Temperature Settings (All Cold Rinses)
- Delay Wash up to 19 hours for Washing Convenience

### Style and Design

- Electronic Control Panel with LED Display and Dial-A-Cycle™
- Touch Buttons
- Chrome Edged Diamond Glass Lid
- SlamProof™ Lid

### Technology Benefits

- NFC Tag On™
- LoDecibel™ Quiet Operation
- Highly Energy and Water Efficient
- SmartDiagnosis™ 3.0
- TrueBalance™ Anti-Vibration System



Black Stainless Steel



### Mega Capacity

When it comes to laundry capacity, big is good, but bigger is better. Now you can wash a king size comforter and full set of bedding in a single load! At 6.0 cu.ft. of MEGA capacity, you'll definitely have room to clean.

### Fast Forward your Laundry

Tired of spending hours on end finishing your family's laundry? Now, those days are gone. LG's revolutionary TurboWash™ 2.0 Technology allows you to save up to 30 mins per load, with outstanding cleaning performance! It's like pressing the fast forward button on your laundry.

### Deep Clean with Steam

LG's Steam Technology penetrate fabric to remove soil and enhance cleaning results, it also removes common household allergens. The Allergiene™ cycle gently removes over 95% of common household allergens, like dust mites and pet dander from even the most delicate fabrics. It's so effective it's certified by the Asthma Society of Canada (ASC).

## PRODUCT FEATURES

TYPE	
Top Loader	•
Design Lock	Rear Control
Intelligent Electronic Controls with Dual LED Display	•
Touch Buttons	•
Dial-A-Cycle™	•
Capacity	IEC 6.0 cu.ft.
ENERGY	
Energy Star	•
CEE Tier	1
WASH PROGRAMS	
14 Programs	Cotton/Normal, Bulky/Large, Perm. Press/Casual, Speed Wash, Heavy Duty, Bright Whites™, Towels Allergiene™, Waterproof, Download, Sanitary, Delicates, Tub Clean, Pre Wash + Normal
14 Options	PGM Save, Rinse+Spin, Spin Only, StainCare™, Soak, ColdWash™, Extra Rinse, Fabric Softener, Delay Wash, Child Lock, Custom Program, Signal On/Off, Water Plus, Add Garments
5 Wash/Rinse Temperatures	Extra Hot, Hot, Warm, Cold, Tap Cold (All Cold Rinses)
5 Spin Speeds	Extra High (950 max), High, Medium, Low, No Spin
No. of Water Levels	Automatically adjusts to the size of load
No. of Soil Levels	3
FABRIC CARE FEATURES	
TurboWash™ Technology	•
Steam Technology	•
Allergiene™ Cycle	•
Sanitary Cycle	•
WaveForce™ Technology	•
ColdWash™	•
SmartRinse™ Jet Spray System	•
SenseClean™ System	•

### Catch the Wave

LG WaveForce™ uses rapid drum movement and powerful water jets to provide outstanding washing and rinsing performance, while staying gentle on clothes.

### Count On It

When you buy a washer, you don't want to worry that it won't last. Because the DirectDrive™ Motor uses fewer moving parts and operates more efficiently, LG confidently backs the motor with a 10-year warranty.

### Call, Connect, Resolve

SmartDiagnosis™ uses self-diagnosing technology that can communicate 24/7 with LG customer service over the telephone providing you with comfort and reliability.

CONVENIENCE FEATURES	
2 + 1 Dispenser	Main Wash, Fabric Softener + Liquid Bleach
TrueBalance™ Anti-Vibration System	•
SmartDiagnosis™	•
SlamPoof™ Lid	•
Load Sense	•
Status Indicator(s)	•
End of Cycle Signal	•
Child Lock	•
Auto Suds Removal	•
Forced Drain System	•
Internal Water Heater	•
Leveling Legs	4 Adjustable Legs
LoDecibel™ Quiet Operation	•
MOTOR AND AGITATOR	
Motor Type / Motor Speed / Axis	Inverter Direct Drive / Variable / Vertical
Max RPM	950
MATERIALS AND FINISHES	
NeveRust™ Stainless Steel Drum	•
Cabinet	PCM
Control Panel	Plastic
Top Cover	Painted
Diamond Glass Lid	Dark Gray Tint
Available Colour	Black Stainless Steel (HKA)
POWER SOURCE	
Ratings / Electrical Requirements / Type	CSA Listed / 120V, 60Hz, 10 Amps/Electric
DIMENSIONS	
Product (WxHxD)	27" x 44 1/2" x 28 3/8" (57 1/5" D with door open)
Carton (WxHxD)	29 1/2" x 47" x 31 1/4"
Weight (Product/Carton)	146.9 lbs/162.3 lbs
UPC CODES	
WT7600HKA	772454067778
WARRANTY	
1 Year Parts and Labour	
5 Years Part on Drum	
10 Years Part on DirectDrive™ Motor	



LG ELECTRONICS CANADA INC.

20 Norelco Drive, North York, Ontario M9L 2X6

Tel: 647-253-6300 | LG.com

Customer Service & Parts

1-888-542-2623

Design, features and specifications are subject to change without notice.  
Non-metric weights and measurements are approximate.  
All trademarks are property of their respective owners.

Printed in June 2016