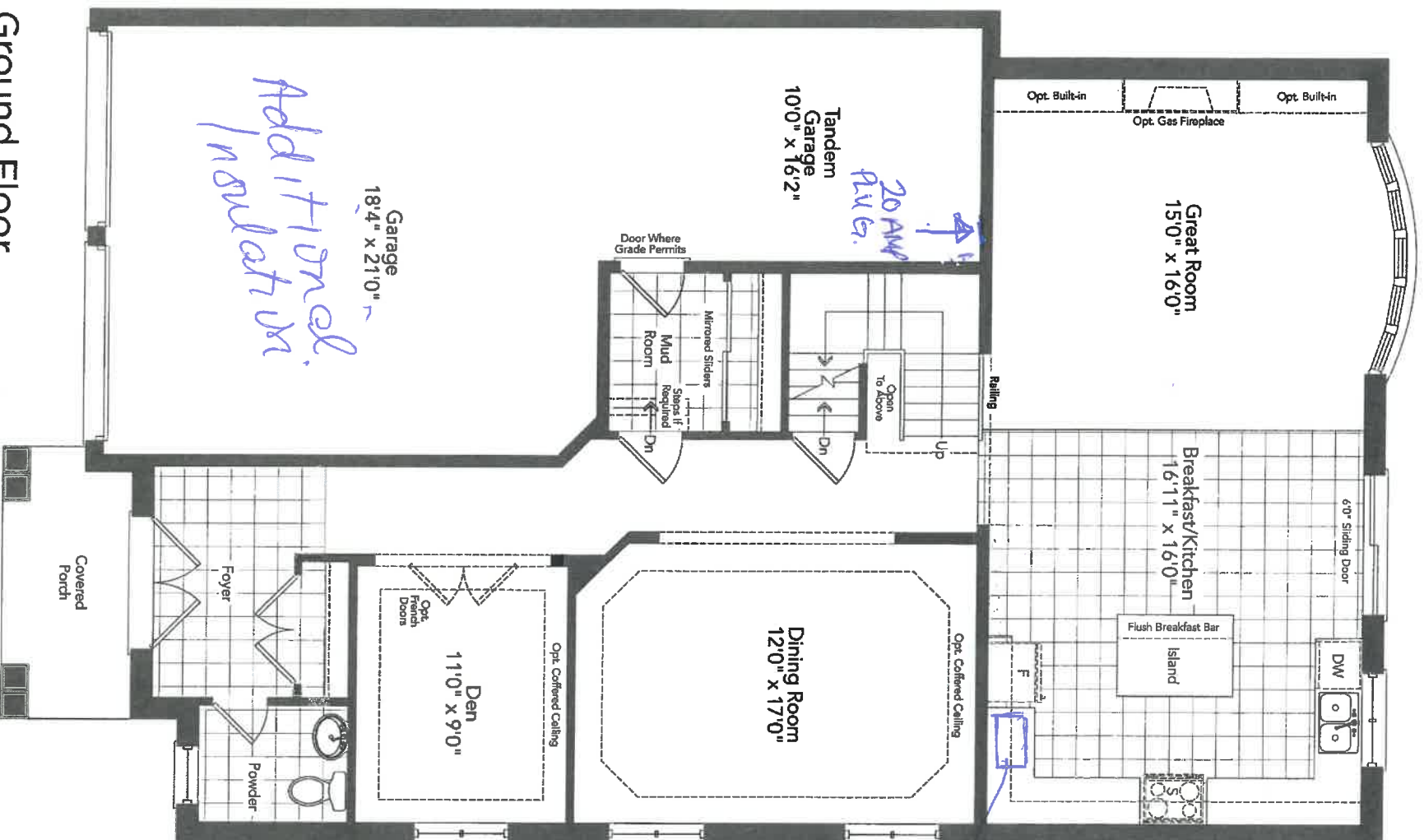


CONSTRUCTION SUMMARY OF EXTRAS
Printed 2020-01-14 / 9:21 AM / Page 1 of 1

Site: INNISFIL PHASE 3
Lot: 55W
Model: 42-05 FISHER (A)
Purchaser: MICHAL & DAVID SILVER
Phone/Email: 647-962-6526 / 647-898-2665(D)
Phone/Email: msilver1989@gmail.com / david.silver1987@gmail.com



DESCRIPTION		DATE SELECTED
#1	OPTIONAL FINISHED BASEMENT INCLUDES CARPET GRADE STAIRS, RAILINGS WHERE APPLICABLE, FINISHED BATHROOM WITH TUB, TOILET AND VANITY, ELECTRICAL AS REQUIRED, (2) EGRESS WINDOWS AND SMOOTH CEILINGS (FROM BUILDERS STANDARD FINISHES)	DECEMBER 16 2019 ✓
	***NOTE - BASEMENT CLOSET IN MAIN AREA, LOCATION TO BE DETERMINED ONCE ELECTRICAL PANEL LOCATION IS DETERMINED	DECEMBER 16 2019 ✓
#2	WATERLINE TO FRIDGE	DECEMBER 16 2019 ✓
#3	PLUG (20 AMP, SEP CIRCUIT) INSIDE TANDEM GARAGE(SEE LOCATION ON SKETCH) FOR FUTURE FREEZER	DECEMBER 16 2019 ✓
#4	SMOOTH CEILINGS ON THE MAIN FLOOR	DECEMBER 16 2019 ✓
#5	SMOOTH CEILINGS ON THE SECOND FLOOR	DECEMBER 16 2019 ✓
#6	200 AMP	DECEMBER 16 2019 ✓
#7	ADDITIONAL SINK IN KITCHEN WITH STANDRAD PULL DOWN MOEN INTEGRA FAUCET, BLANCO QUATRUS R15 U1 MEDIUM 401516	DECEMBER 16 2019 ✓
0	***NOTE - SHORTEN CABINETS ABOVE NEW ADDITIONAL KITCHEN SINK	DECEMBER 16 2019 ✓
#8	GARAGE INSULATION - FRAMED EXTERIOR WALLS FOR NON-HABITABLE AREAS, FOUNDATION WILL NOT BE INSULATED	DECEMBER 16 2019 ✓
#9	NO FURTHER STRUCTURAL CHANGES	DECEMBER 16 2019 ✓

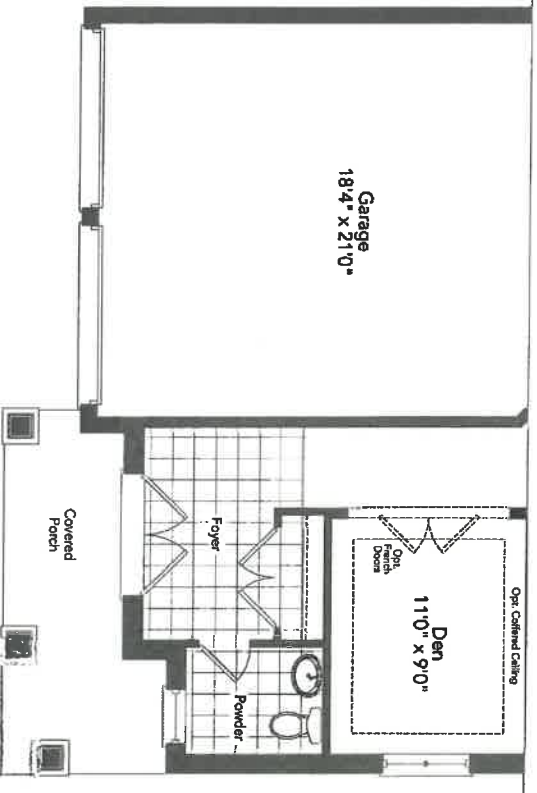


Additional
Insulation

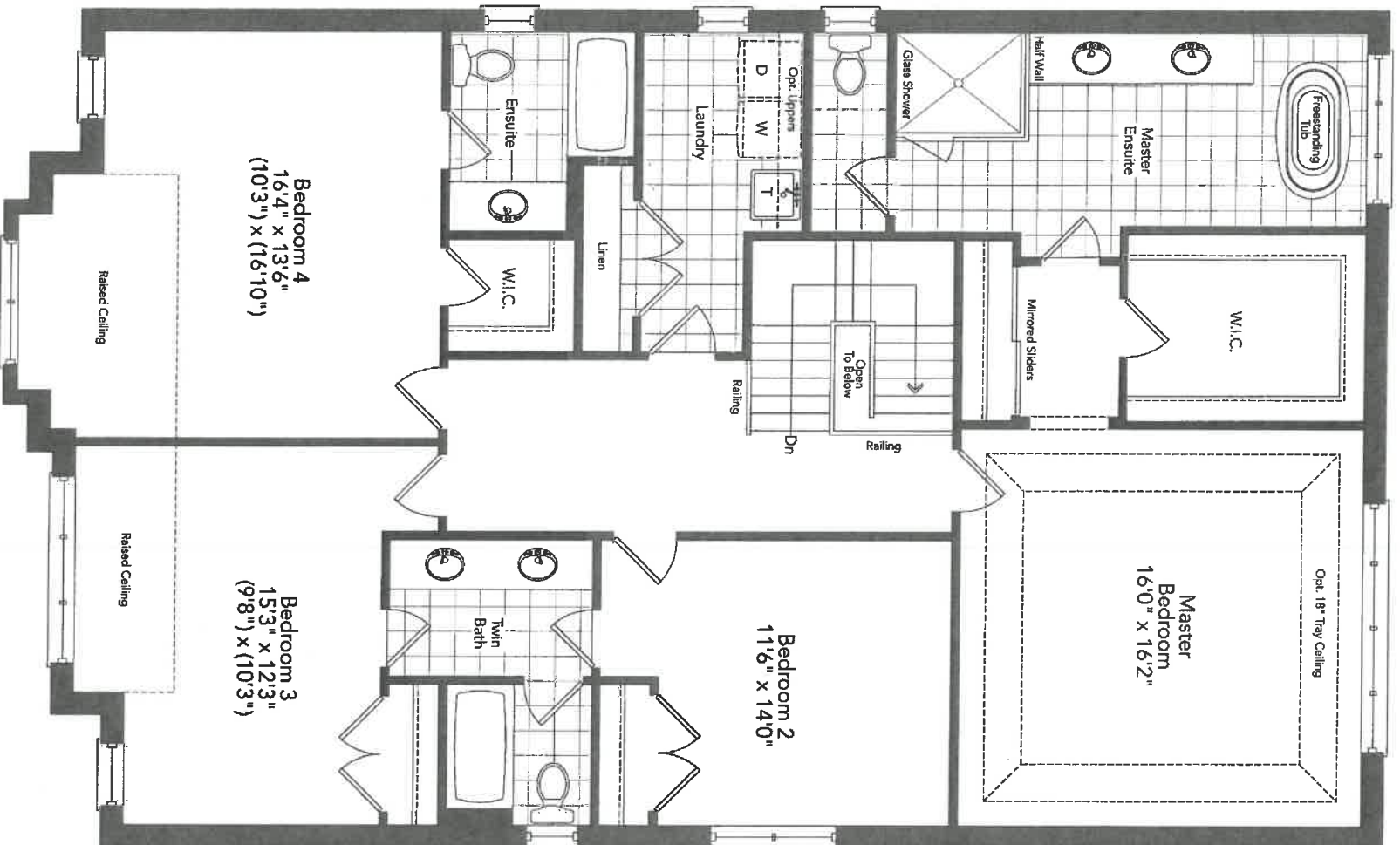
ADDITIONAL
SINK + FAUCET

SMOOTH CHANGES

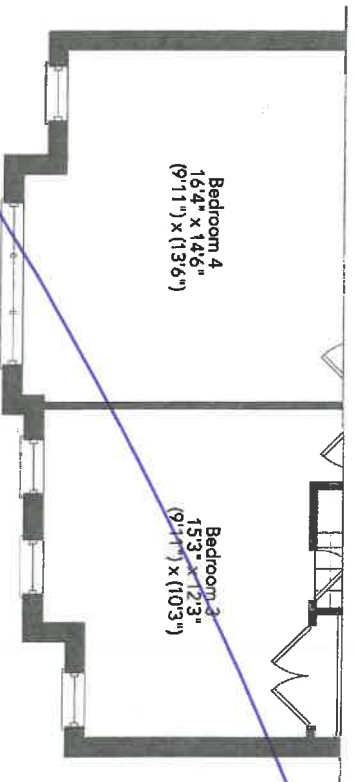
20' AW



Partial Ground Floor Elevation B



Second Floor
Elevation A



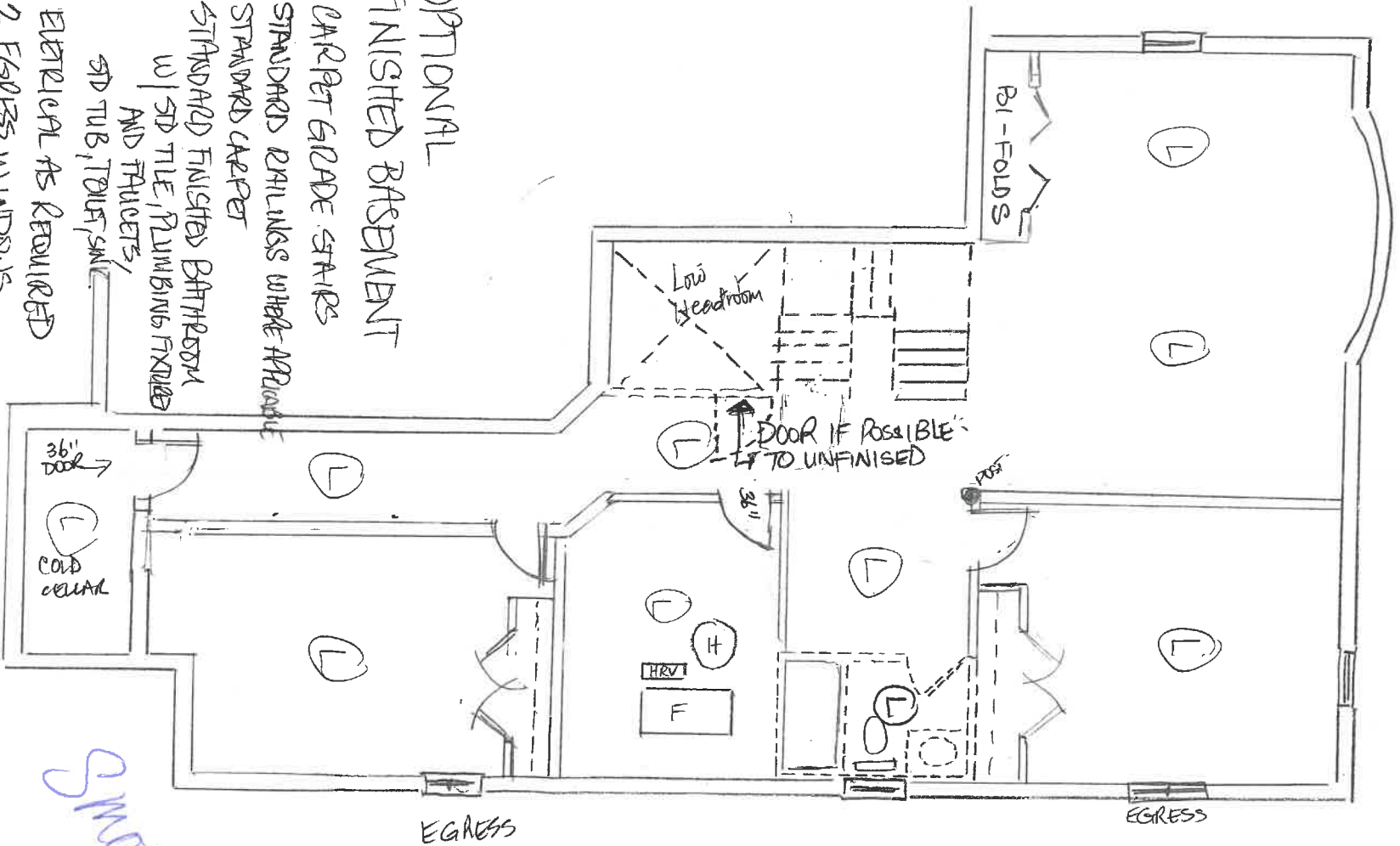
Partial Second Floor
Elevation B

SMOOTH CURVES

M.S.
0.5.

55W

FISHER 42-05



OPTIONAL FINISHED BASEMENT

INCL: CARPET GRADE STAIRS

- STANDARD RAILINGS WITH HANDRAILS
- STANDARD CARPET
- STANDARD FINISHED BATHROOM w/ STD TILE, PLUMBING FIXTURES AND FIXTURES, STD TUB, TUBS, SINK
- ELECTRICAL AS REQUIRED
- 2 EGRESS WINDOWS

TOTAL = \$65,000 Plus HST

SHOWN
Hatched

1/3

42-05
Master

LOT 55W

Additional Force
Innistr!
55W



Specifications

Buy it for looks. Buy it for life.®

There is more than 1 version of this model.
Page down to identify the version you have.

DESCRIPTION

- Metal construction with various finishes identified by suffix
- Pullout spray with 59" braided hose
- Flexible supplies with 3/8" compression fittings

OPERATION

- Lever style handle
- Temperature controlled by 100° arc of handle travel
- Spout rotation is 120°
- Operates with less than 5lbs. of force
- Operates in stream or spray mode in the pullout or retracted position

FLOW

- Flow is limited to 1.5 gpm (5.7 L/min) at 60 psi

CARTRIDGE

- 1255™ Duralast™ cartridge

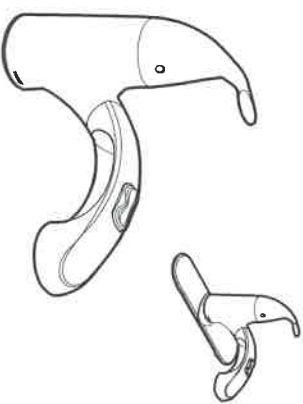
STANDARDS

- Third party certified to IAPMO Green, ASME A112.18.1/CSA B-125.1 and all applicable requirements referenced therein including NSF 61/9
- Meets CalGreen and Georgia SB5370 requirements
- Contains no more than 0.25% weighted average lead content
- Complies with California Proposition 65 and with the Federal Safe Drinking Water Act
- The backflow protection system in the device consists of two independently operating check valves, a primary and a secondary which prevent backflow

- ADA**  **for lever handle**

WARRANTY

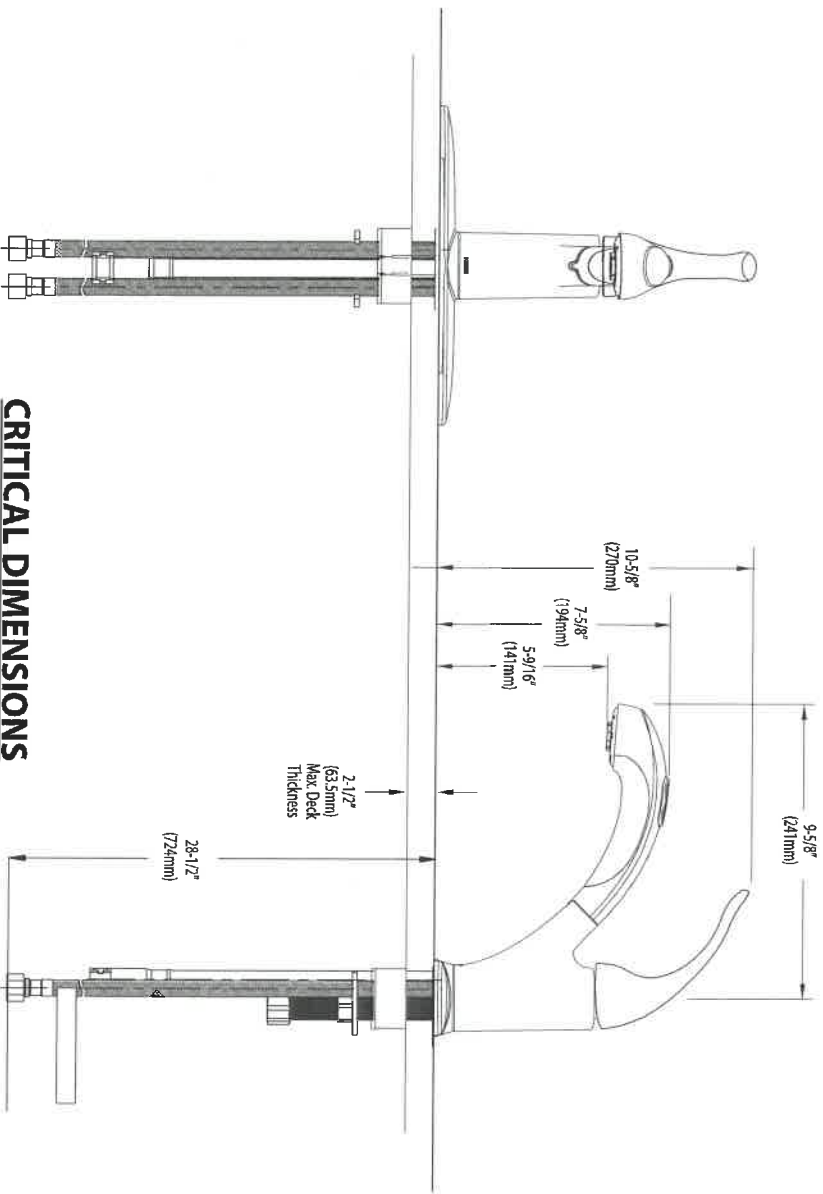
- Lifetime limited warranty against leaks, drips and finish defects to the original consumer purchaser
- 5 year warranty if used in commercial installations



Integra®
Single Control Kitchen Faucet

Models: 67315 series

NOTE: DESIGNED TO INSTALL
THRU 1 OR 3 HOLES 1-1/2" (38mm) DIA.



CRITICAL DIMENSIONS

(DO NOT SCALE)

Rev. 10/13

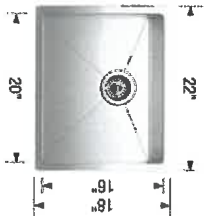
FOR MORE INFORMATION CALL: 1-800-BUY-MOEN

www.moen.com

Product Specification Sheet

QUATRUS R15 U 1

Satin brushed finish



PRODUCT DIMENSIONS

QUATRUS R15 U 1 Colour Finish Model No.

Satin brushed finish 401516



FEATURES / SPECIFICATIONS

- German engineered with 304 series, 18-gauge stainless steel
- Practical 15 mm radius corners for easy cleaning
- X-pattern drain grooves quickly remove water from the sink
- 18/10 chrome-nickel content for exceptional lustre, durability and strength
- Rear-positioned drain holes maximize cabinet storage space

DESIGN AND PLANNING TIPS

Cabinet Size: 24" (610 mm)
Bowl depth: 9" (230 mm)
Depending on cabinet construction, a different cabinet size may be required.
Consult the cabinet manufacturer.

WARRANTY

Limited Lifetime warranty

Code/Standards Compliance

BLANCO sinks and faucets are third-party tested and certified to CSA, cUPC, ANSI/ASME and NSF standards and listed by applicable certification bodies. For more information on individual product listings, contact our office or listing organization.

BLANCO CANADA
100 Corporation Drive
Brampton, ON L6S 6B5

Tel: 905 494 2400
Fax: 905 494 2425
www.blancocanada.com

Toll Free: 1 877 425 2626
Toll Free: 1 877 825 2626

© 2016 BLANCO CANADA

5500 Innisfil

Additional Sink

D.S.
M.S.