

CONSTRUCTION SUMMARY OF EXTRAS
Printed 2019-08-29 / 8:52 AM / Page 1 of 1

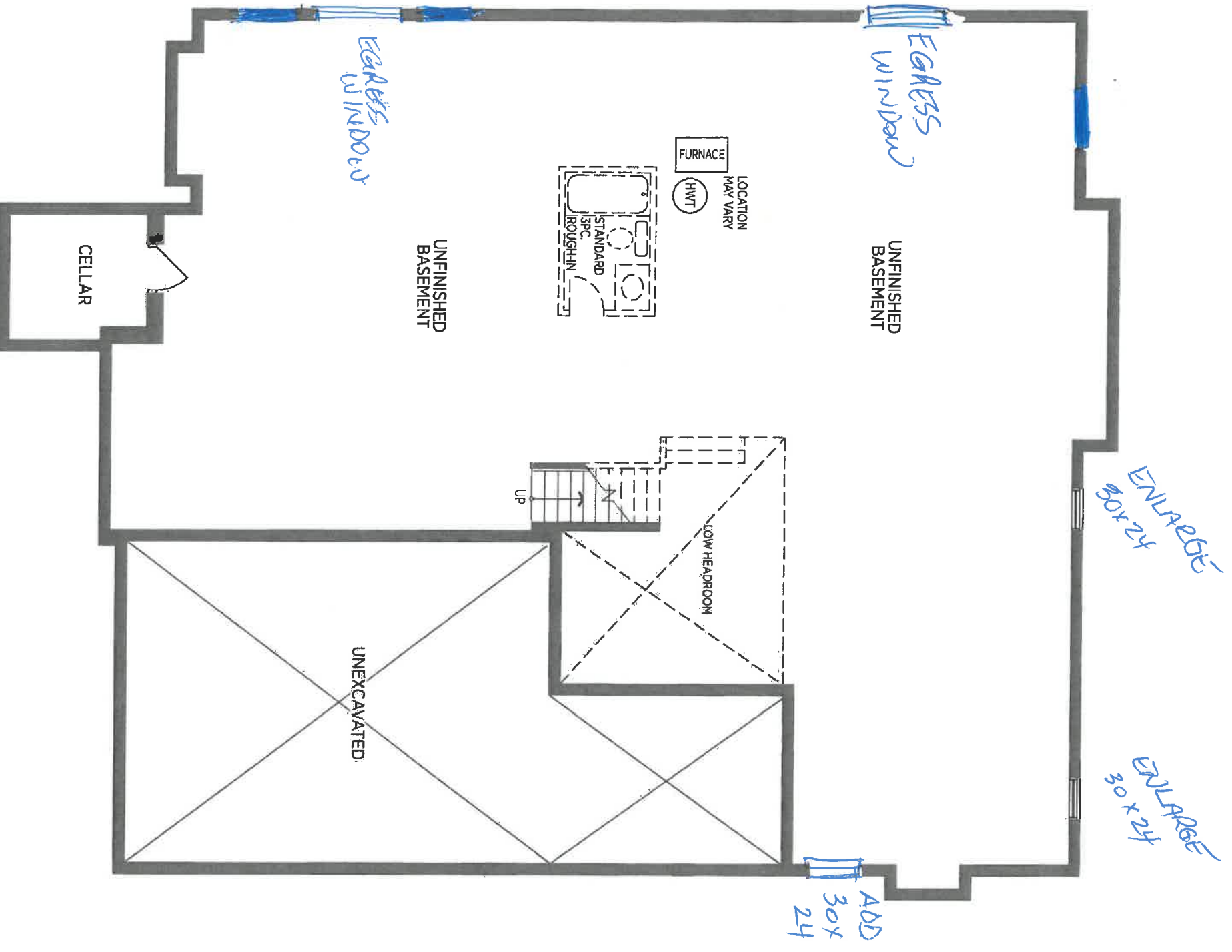
Site:
Lot:
Model:
Purchaser:
Phone/Email:

COOKSTOWN
36
60-03
RAJESH & ROSETA WILLIE
647-408-4660 / RAJESHWILLIE@YAHOO.COM



DESCRIPTION		DATE SELECTED
#1	BONUS PACKAGE: OPTIONAL 2NS FLOOR WITH 5TH BEDROOM	INCLUDED IN APS
#2	BONUS PACKAGE: ROUGH IN GAS LINE FOR BBQ	INCLUDED IN APS
#3	BONUS PACKAGE: 10 FOOT CEILING HEIGHT ON MAIN FLOOR, INCLUDES 8 FOOT DOORS AND TRANSOMS ABOVE WINDOWS WHERE POSSIBLE	INCLUDED IN APS
#4	BONUS PACKAGE: 9 FOOT CEILING HEIGHT ON 2ND FLOOR, INCLUDES 8 FOOT DOORS AND INCREASED WINDOW HEIGHT WHERE POSSIBLE	INCLUDED IN APS
#5	CLOSE OPENING FROM KITCHEN TO DINING ROOM	AUGUST 6 2019
#6	RELOCATE ISLAND CABINETS TO BE UNDER WINDOW WITH DISHWASHER AND SINK	AUGUST 6 2019
#7	SHORTEN WINDOW BY APPRX 10 INCHES IN KITCHEN TO BE ABOVE COUNTERTOP	AUGUST 6 2019
#8	ELECTRICAL FOR BUILT IN WALL OVEN & MICROWAVE (ASSUMING 40 AMP IS REQUIRED)	AUGUST 6 2019
#9	SIDE DOOR FROM GARAGE TO EXTERIOR, IF POSSIBLE IF GRADE PERMITS	AUGUST 6 2019
#10	BASEMENT WINDOWS - ADD (1) 30 X 24 - SEE SKETCH FOR LOCATIONS, IF POSSIBLE	AUGUST 6 2019
#11	BASEMENT WINDOWS - (2) INCREASE EXISTING WINDOWS IN BASEMENT TO BE 30 X 24, IF POSSIBLE	AUGUST 6 2019
#12	BASEMENT WINDOWS - ADD (2) EGRESS WINDOWS, (ONE IS UPGRADED FROM THE EXISTING WINDOW), IF POSSIBLE, SEE SKETCH FOR LOCATIONS **WINDOW WELLS REQUIRED	AUGUST 6 2019
#13	OPEN WALL BETWEEN LIVING ROOM AND DINING ROOM (**THIS IS A SUPPORTING WALL)	AUGUST 6 2019
#14	REQUEST - NIB WALL IN AREA OF DINING ROOM, LIVING AND HALL - TO BE MADE AS SMALL AS POSSIBLE	AUGUST 6 2019
#15	INTERIOR TRIM - UPGRADE 2 (3-1/2" CASING X 7-1/4" BASEBOARD) **STEP STYLE	AUGUST 6 2019
#16	GARAGE DOOR OPENERS (INCLUDES DIGITAL KEY PADS)	AUGUST 6 2019
#17	COFFER CEILING IN MAIN HALL	AUGUST 6 2019
#18	ELECTRICAL - OCCUPANCY SENSOR IN POWDER ROOM	AUGUST 6 2019
#19	ADD DOOR TO TOP OF STAIRS WHERE MUDROOM IS	AUGUST 6 2019
#20	SHOWER NICHE 14 X 18 (HORIZONTAL)	AUGUST 6 2019
#21	GAS LINE TO STOVE INCLUDES 15 AMP PLUG	AUGUST 6 2019
#22	8 INCH VENT ABOVE STOVE	AUGUST 6 2019

STRUCTURES

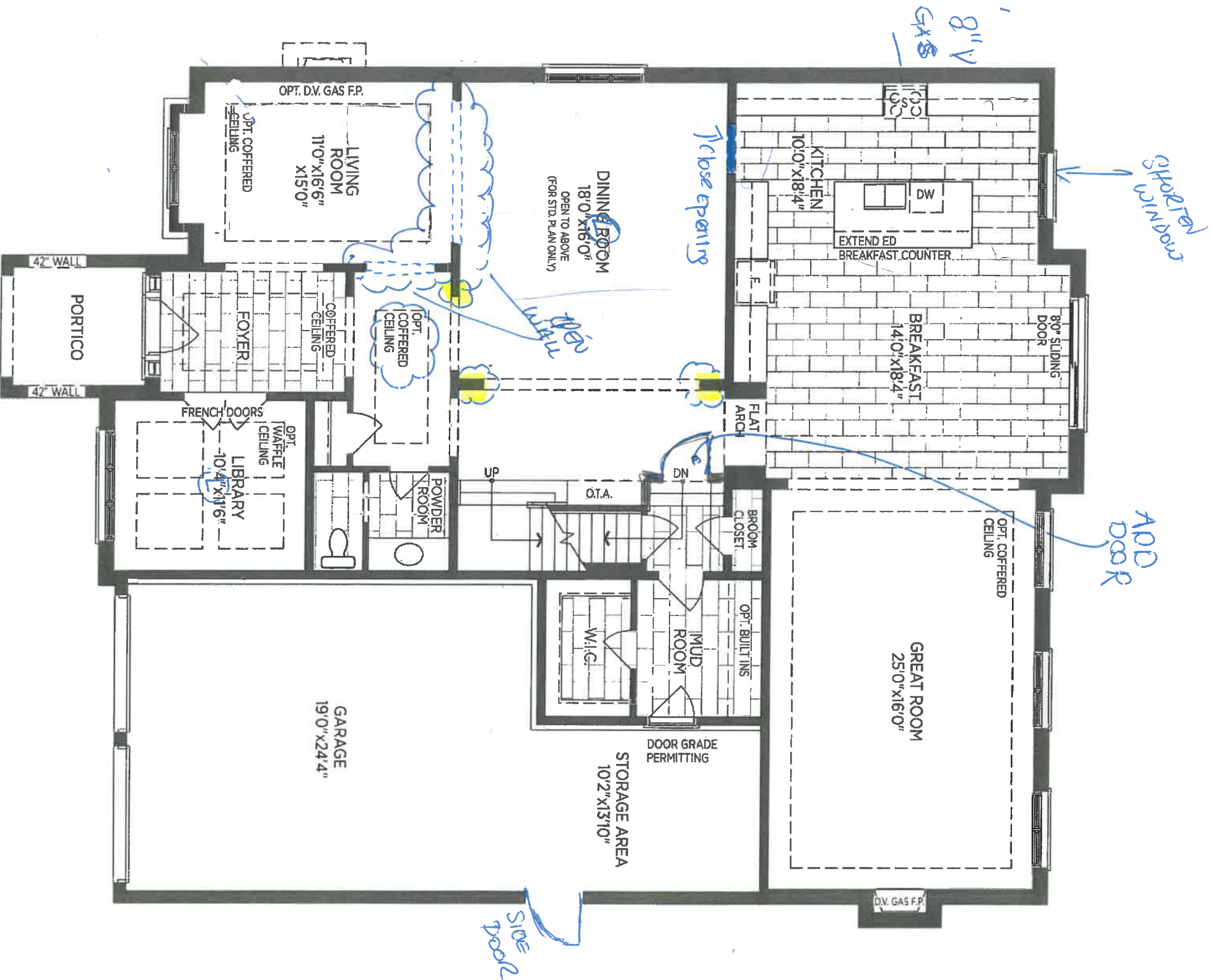


BASEMENT PLAN EL. 'A'

BELCOURT 60-03

lot 36

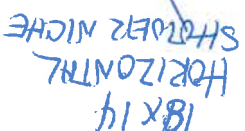
Per
for



GROUND FLOOR EL. A

BELCOURT 60-03

lot 36

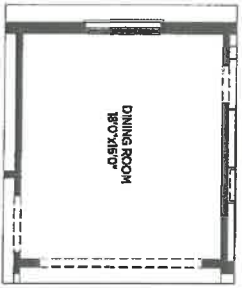
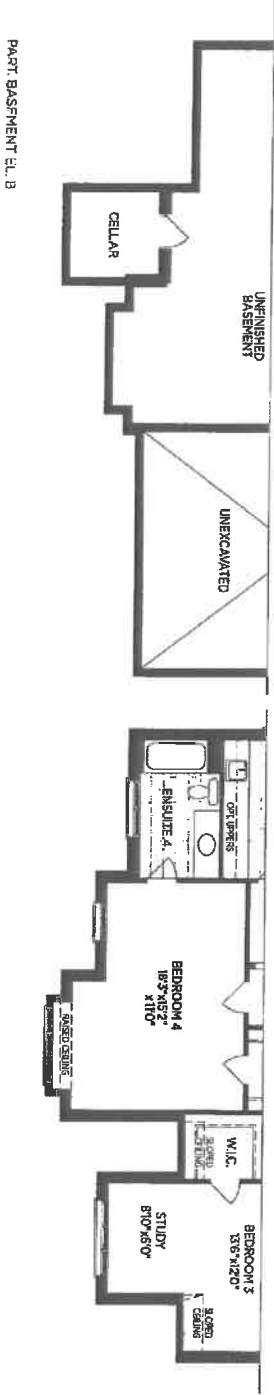
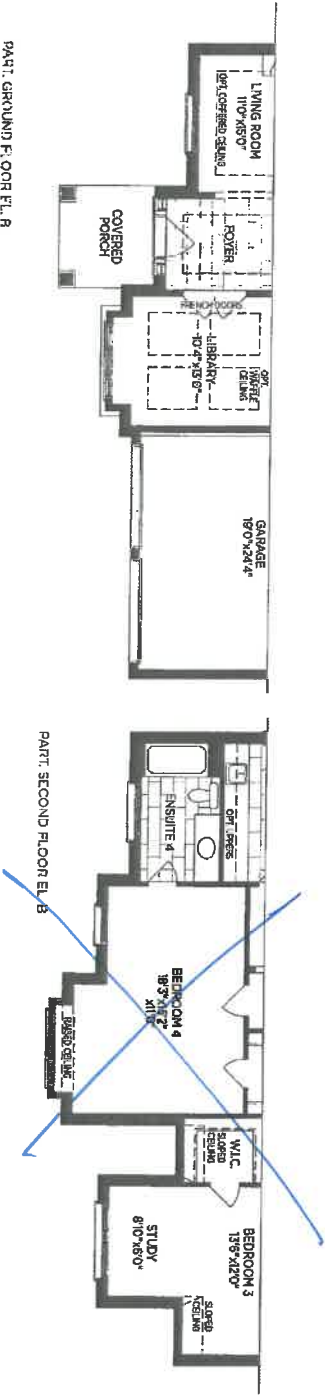


BELCOURT 60-03

let me




Optional Plans & Partial



BELCOURT 60-03

LOT 36

BR