



CONSTRUCTION SUMMARY  
Belle Aire Shores - Zancor Homes (Innisfil) Ltd.

PURCHASER: *INVENTORY*

TEL: RES.: 416-8437

LOT / PHASE	HOUSE TYPE	PRINT DATE
150 / 1	GALLEY (36-05) ELEV A	<i>601.320 BATH</i> 2-Oct-17

Ref#	Quantity	Description	Approved	Notes
3930		SMOOTH CEILINGS ON MAIN AND SECOND FLOOR	12Jun17	
3931		ELECTRICAL - LED POTLIGHTS IN KITCHEN (4) ON SEP SWITCH **INSTALL STANDARD LIGHT ABOVE ISLAND	12Jun17	
3932		FIREPLACE IN GREAT ROOM WITH STANDARD MANTLE **FIREPLACE COMES INTO THE ROOM	12Jun17	
3933		8 FOOT DOORS ON MAIN FLOOR	12Jun17	
3934		8 FOOT GARAGE MAN DOOR IF POSSIBLE	12Jun17	
3935		LARGER BASEMENT WINDOWS 30 X 24 (X2)	12Jun17	
3936		FRAMELESS GLASS SHOWER IN MASTER ENSUITE	12Jun17	
3937		ELECTRICAL - LED POTLIGHTS IN GREAT ROOM (4) ON SEP SWITCH *STD TO REMAIN	12Jun17	
3938		ELECTRICAL - LED POTLIGHTS IN DINING ROOM (2 ON SAME SWITCH AS STD), AND 3 ON SEP SWITCH	12Jun17	
3939		ELECTRICAL - LED POTLIGHTS IN FOYER (5) ON SEP SWITCH *DELETE STD	12Jun17	
3940		ELECTRICAL - LED POTLIGHTS IN MUDROOM (2) *DELETE STD	12Jun17	
4954		KITCHEN UPG (2) CABINETRY	02Oct17	
4955		CABINET -MASTER ENSUITE - UPG (1)	02Oct17	
4956		KITCHEN - SOFT CLOSE	02Oct17	
4957		CABINETRY - KITCHEN POTS & PANS DRAWERS	02Oct17	
4958		CABINETRY - KITCHEN DEEP UPPERS WITH GABLE	02Oct17	
4959		CABINETRY - DELETE CABINETS ABOVE STOVE FROM FUTURE CHIMNEY	02Oct17	
4960		CABINETRY - UNDER CABINET VALANCE & 6" RISERS TO TOP OF UPPER CABINETS	02Oct17	
4961		TILE - FOYER, POWDER, MUD, KITCHEN, BREAKFAST UPG (5)	02Oct17	
4962		TILE -MASTER ENSUITE FLOOR AND WALL UPG (5)	02Oct17	
4963		COUNTERTOP - MASTER ENSUITE UPG (3) ** INCLUDES RECTANGLE UNDERMOUNT SINKS	02Oct17	
4964		COUNTERTOP - KITCHEN UPG (1)	02Oct17	
4965		HARDWOOD - MAIN FLOOR UPG (4)	02Oct17	
4966		HARDWOOD - UPPER HALL UPG (4) IN LIEU OF CARPET	02Oct17	
4967		ELECTRICAL - LED LIGHTING UNDER CABINETS IN KITCHEN	02Oct17	
4968		STAIN STAIRS TO MATCH HARDWOOD	02Oct17	
4969		CARPET - UPG (2) IN BEDROOMS	02Oct17	
4970		RAILINGS - 1"-5/8" OAK SQUARE PICKET	02Oct17	



CONSTRUCTION SUMMARY

PURCHASER

INVENTORY

Belle Aire Shores - Zancor Homes (Innisfil) Ltd.

TEL: RES.: 416-8437

LOT / PHASE	HOUSE TYPE	PRINT DATE
150 / 1	GALLEY (36-05) ELEV A	2-Oct-17

Ref#	Quantity - Description	Approved	Notes
4971	PLUMBING - KITCHEN SINK - BLANCO QUATRUS U SUPER SINGLE	02Oct17	
4972	TILE - SHOWER JAMB IN MASTER	02Oct17	
4973	PLUMBING - WATERLINE TO FRIDGE	02Oct17	
4974	APPLIANCE PACKAGE - WHIRLPOOL	02Oct17	
5197	TILES - BACKSPLASH IN KITCHEN INCLUDING BEHIND CHIMNEY	02Oct17	

This Document is Extremely Time Sensitive - Printed 2 Oct 17 at 9:51

ANCOR HOMES COLOUR CH T

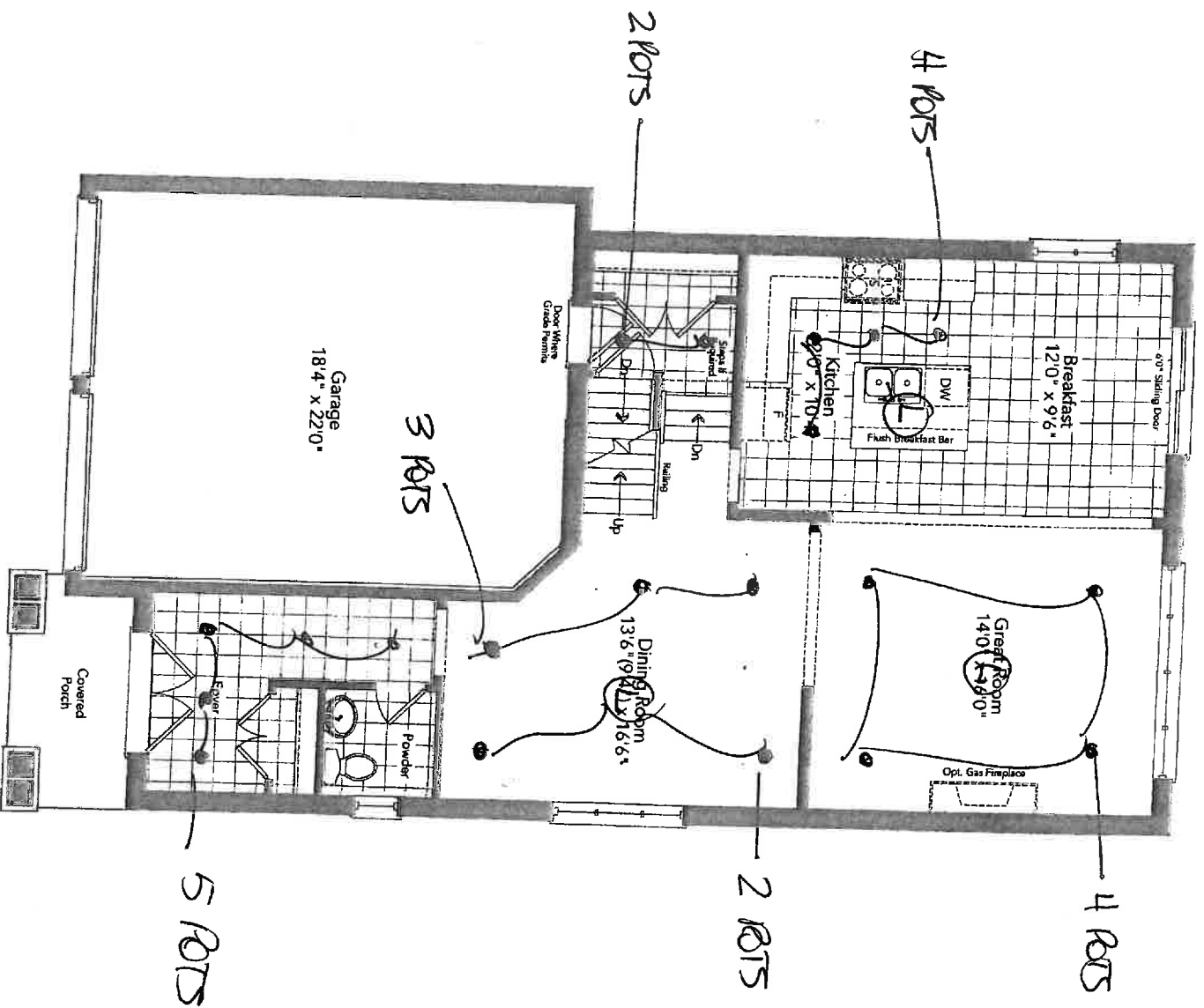
CABINETRY / COUNTERTOPS						
	DOOR STYLE	HARDWARE	COUNTERTOP	EDGE		
KITCHEN	EURO CARVAGGIO (2)	H800BC	K-STONE K186 (1)	D		
ISLAND	EURO CARVAGGIO (2)	H800BC	K-STONE K186 (1)	D		
MASTER ENSUITE	SIERRA MAPLE - ESPRESSO STAIN	H800BC	COSMIC BLACK GRANITE (3)	H		
TWIN	TUXEDO PVC SHAKER	H800BC	TUMBBLED MOSAIC 4893-60			
ENSUITE 4	TUXEDO PVC SHAKER	H800BC	TUMBBLED MOSAIC 4893-60			
Powder Room						
Laundry 2ND FLOOR						
Basement Bath						
TILES						
			INSERTS	THRESHOLDS		
Main Foyer	ROMA CALCATTA 12 X 24 (5)					
Basement Foyer	N/A					
Powder Room	ROMA CALCATTA 12 X 24 (5)					
Mud Room	ROMA CALCATTA 12 X 24 (5)					
Main Hall	N/A					
Kitchen Floor	ROMA CALCATTA 12 X 24 (5)					
Breakfast Floor	ROMA CALCATTA 12 X 24 (5)					
Kitchen Bk.Splash	LINEN GLASS 3 X 6 (5) **BRICK **INCLUDES BEHIND CHIMNEY					
Laundry	BELINA CREAM 13 X 13					
Mstr Ensuite Floor	ROMA PIETRA 12 X 24 (5)					
Mstr Ensuite Shower	ROMA PIETRA 12 X 24 (5) **VERTICAL					
Master Shower Floor	WHITE 2 X 2					
Master Shower Jamb	WHITE QUARTZ ON BOTTOM ONLY - EXTEND TILE ON SIDE WALLS WHERE GLASS IS					
Main Bath Floor	BELINA GREY 13 X 13					
Main Bath Tub Wall	BELINA GREY 8 X 10					
Twin Bath Floor	BELINA GREY 13 X 13					
Twin Ensuite Tub Wall	BELINA GREY 8 X 10					
HARDWOOD / CARPET						
Living Room	N/A					
Dining Room	VINTAGE NSS OAK SCUPTLED 5" - SAND DUNE (4)					
Family/Great Room	VINTAGE NSS OAK SCUPTLED 5" - SAND DUNE (4)					
Den/Study/parlour/Library	N/A					
Kitchen *(Waiver)	N/A					
Main Foyer *(Waiver)	N/A					
Main Hall	N/A					
Upper Hall	VINTAGE NSS OAK SCUPTLED 5" - SAND DUNE (4)					
Master Bedroom	GRAND ILLUSION 727 BANFF (2)					
Bedroom 2	GRAND ILLUSION 727 BANFF (2)					
Bedroom 3	GRAND ILLUSION 727 BANFF (2)					
Bedroom 4	GRAND ILLUSION 727 BANFF (2)					
Carpet Underpad	STANDARD					
Basement Foyer	N/A					
FIREPLACES						
LOCATION	GREAT ROOM	Opt. Surround	N/A	MAINTLE	NF8	
LOCATION	N/A	Opt. Surround		MAINTLE		
MIRRORS & ACCESSORIES						
Mirrors	YES	Opt. Crown Moulding				
Bathroom Accessories	YES	Location				
Purchaser has reviewed the colour chart						
***FOR TRADE USE***				INNISFIL	150	
Any upgrades in the colour chart must be accompanied with a PES. It is the responsibility of all Trades to inform the builder of any discrepancies on sketches, PES and/or colour charts PRIOR to installation.						
** PAGE 1 OF 2 **				Purchaser Initial	Vendor	



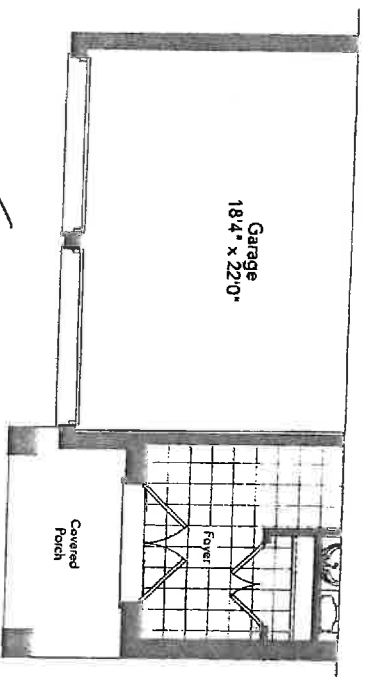
ANCOR HOMES COLOUR CH T

STAIRS, RAILING & PICKETS & STAIR STAIN				
Stair Stain / Species:	STAIN TO MATCH HARDWOOD			
White Paint Req'd	N/A			
Main to 2nd Railing Details:	1-5/8 OAK SQUARE			
Main to Basement Railing Details:	N/A			
TRIM				
Casing/Baseboards	STANDARD - STEP STYLE			
Interior Doors	STD			
Interior Door Hardware	STD			
Exterior Door Hardware	STD			
PAINT				
Kitchen/Breakfast	BIRCH WHITE	Master Beds	BIRCH WHITE	
Living Room	BIRCH WHITE	Bedroom 2	BIRCH WHITE	
Dining Room	BIRCH WHITE	Bedroom 3	BIRCH WHITE	
Family/Great room	BIRCH WHITE	Bedroom 4	BIRCH WHITE	
Den/Study	BIRCH WHITE	Master Ens.	BIRCH WHITE	
Main/Upper Hall	BIRCH WHITE	Main	BIRCH WHITE	
Laundry	BIRCH WHITE	Twin	BIRCH WHITE	
Powder Room	BIRCH WHITE	Basement	BIRCH WHITE	
PLUMBING- UPGRADES TO BE DETAILED ON PES				
FIXTURES	FAUCETS	NOTES		
Kitchen	UPGRADE SINK	STD	BLANCO QUATRUS SUPER SINGLE	
Powder Room	STD	STD		
Master Ensuite	UPGRADE SINK	STD	RECTANGLE UNDER MOUNT	
Main/Twin	UPGRADE SINK	STD	RECTANGLE UNDER MOUNT	
2nd Ensuite	UPGRADE SINK	STD	RECTANGLE UNDER MOUNT	
BASEMENT				
Other				
ZANCOR APPLIANCE REQUIREMENTS-UPGRADES TO BE DETAILED ON PES				
Appliance Package received in 'Schedule E'		YES / NO Package Name:		
	UPG (SEE PES)	DECLINED	NOTES	
GAS LINE	YES			
WATERLINE to Fridge				
Hood Fan Venting SIZE	6 INCH			
ELECTRICAL for Built-in Oven				
ELECTRICAL for Built-in Micro / OTR				
ELECTRICAL for Gas Stove / Cooktop	YES		15 AMP & STD 40 AMP	
ELECTRICAL for Bar Fridge				
DISCLAIMER		INITIALS		
Colours of all materials are as close as possible to Builders selection but not necessarily identical due to dye lot variances in manufacturing/manufacturers. Due to construction progress some items may have been pre-selected or installed. In this event the Vendor's selection must be accepted by the purchaser				
Any changes to the colour chart after signing are subject to a \$5000 administration fee plus costs				
Purchaser has checked and acknowledged accuracy of colour and selections before signing.				
SITE:	INNISFIL	LOT: 150		
PURCHASER(S):	INVENTORY			
HOME #/CELL #			Purchaser Signature	
EMAIL:			Date	
DÉCOR NOTES		Purchaser Signature		
		Date		
***FOR TRADE USE***				
Any upgrades in the colour chart must be accompanied with a PES.		Decor Consultant Signature		
It is the responsibility of <u>all Trades</u> to inform the builder of any discrepancies on sketches, PES and/or colour charts <u>PRIOR</u> to installation.		Date		
*** PAGE 2 OF 2 ***		Vendor Signature		Date

Elevation A & B 2297 sq.ft.



Ground Floor  
Elevation A

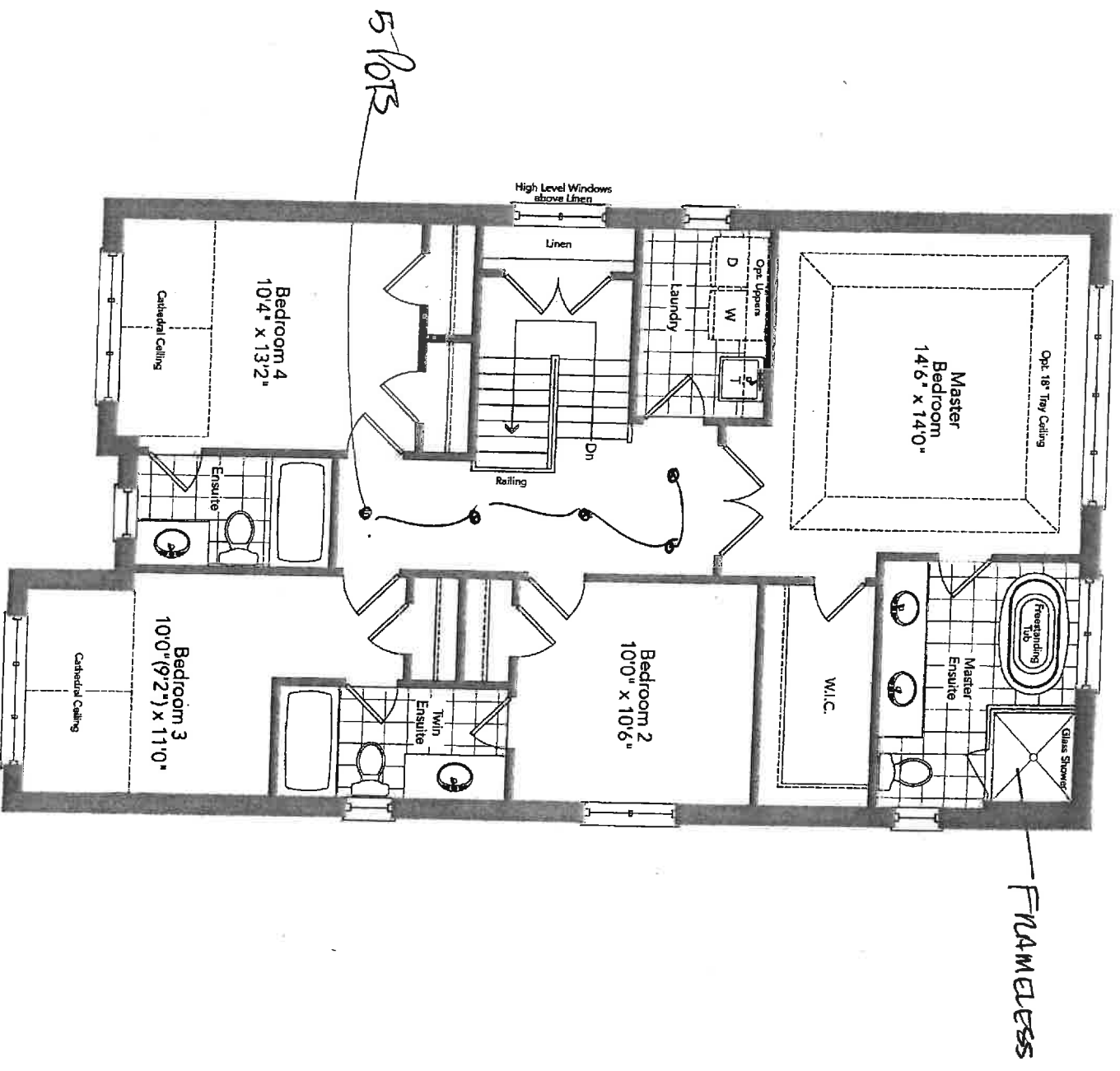


Partial Ground Floor  
Elevation B

- Smooth Chalky
- 8 foot in doors
- 8 foot GMD

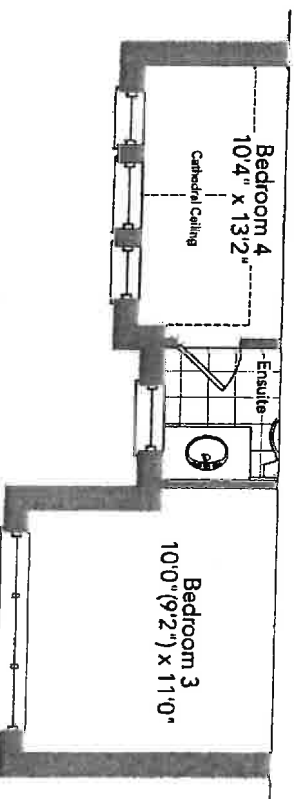
LOT 150

GALLEY 36-05



Second Floor  
Optional 3 Bath Plan  
Elevation A

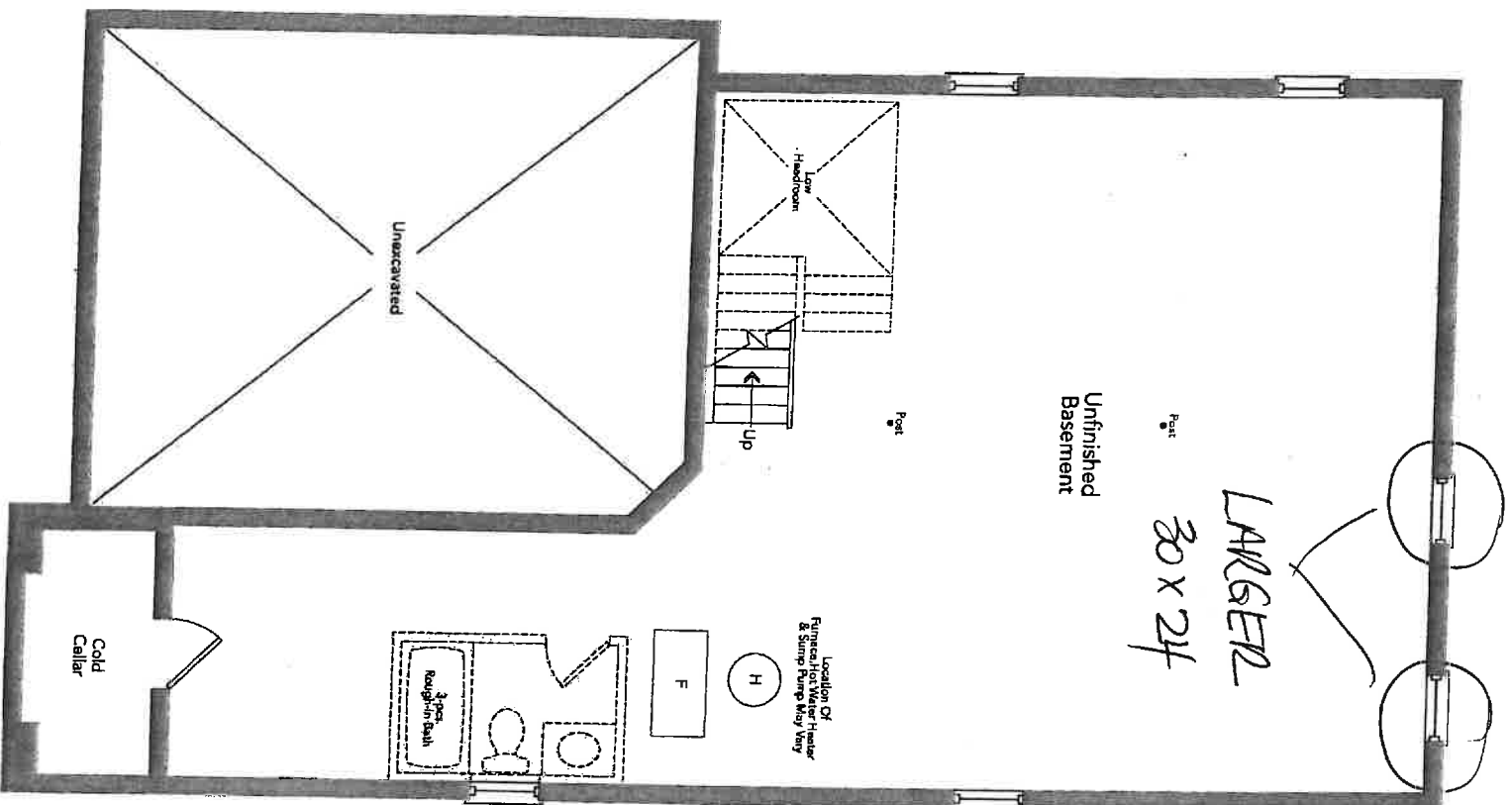
SMOOTH CEILINGS



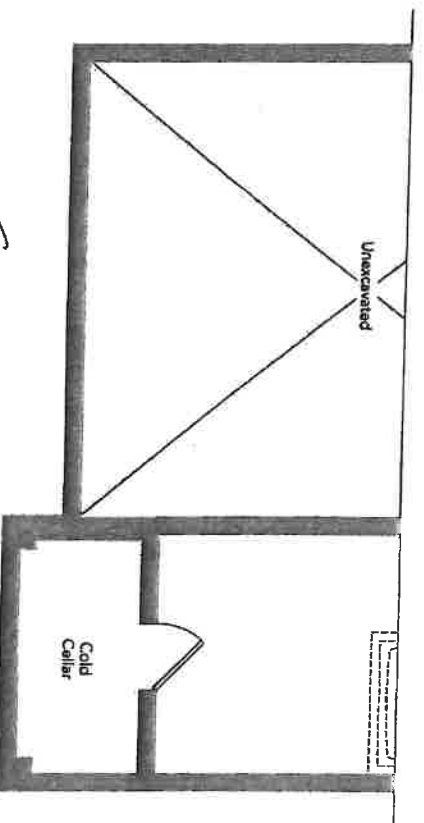
Partial Second Floor  
~~Optional 3 Bath Plan~~  
~~Elevation B~~

GALLEY 36-05

LOT 150



Basement  
Elevation A



Partial Basement  
Elevation B

GALLEY 36-05

LOT 150

# STANDARD CABINET HARDWARE

(New Image Kitchens)



Kitchen  
Bathrooms

LOT 150 INHLSFL



Scale:	Approved by:	Drawn by: MGER
Date: 07/10/15		Revised:

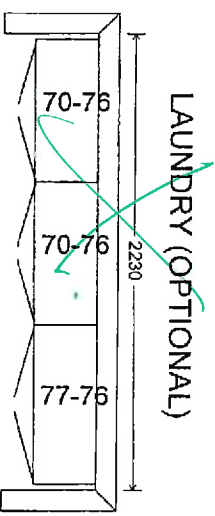
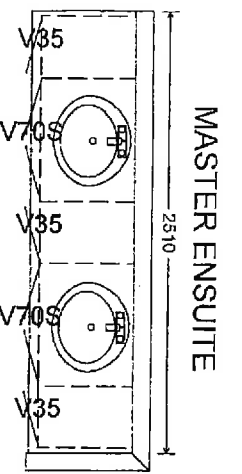
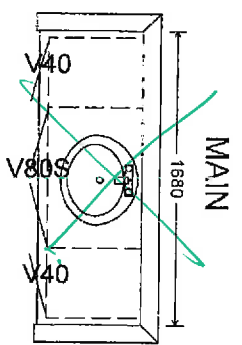
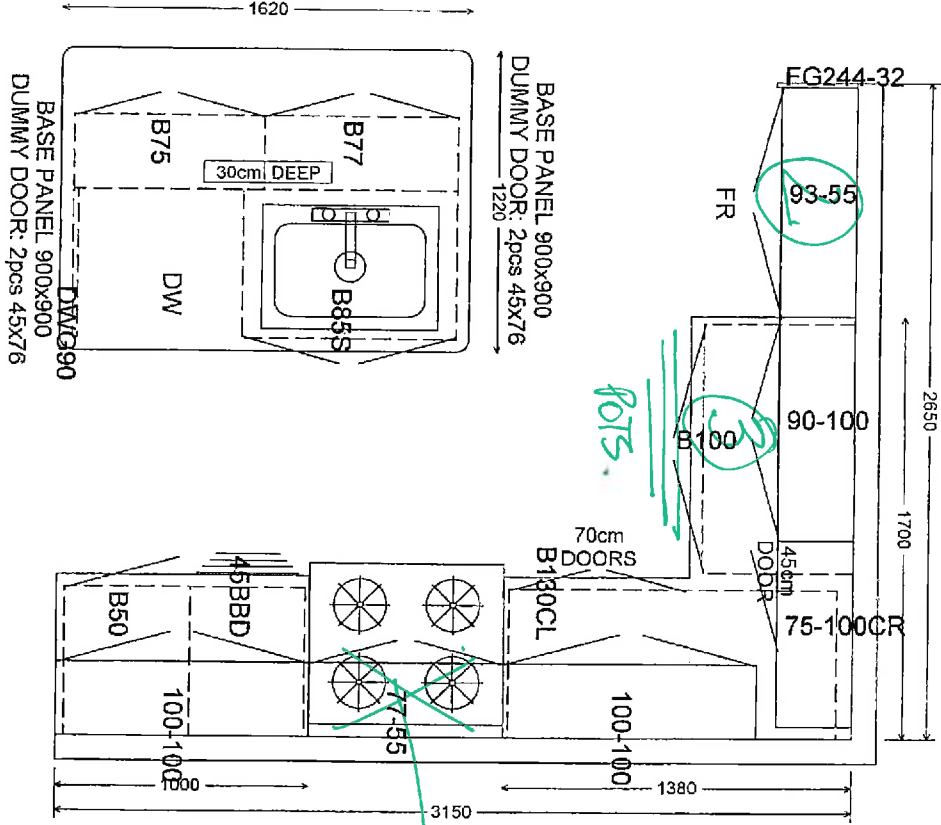
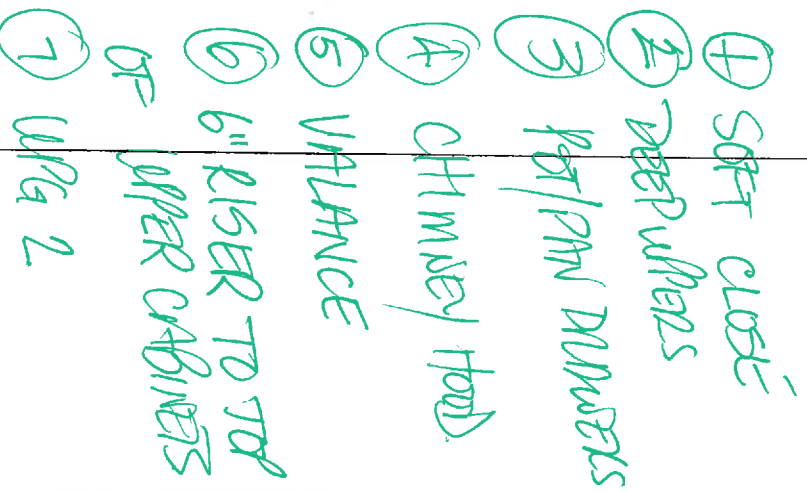
Drawn by:	MGER
Revised:	

Drawn by:  
Revised:

Drawing number:

Drawing number:

BATH



- upgrade

CHIMNEY  
(DELETED  
WORDS)

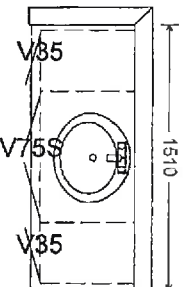
1  
DF3

New Image Kitchens Inc.			
Scale:	Approved by:	Drawn by:	NCER
Date: 07/10/13		Revised:	
BELLE AIR SHORES, INNISFIL		Drawing number:	

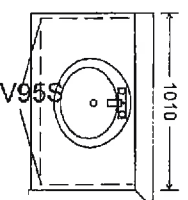
MODEL: 36-05 (OPT. 3)

lot 150 INNISFIL  
(360 BATH)

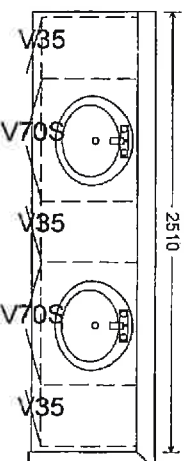
### TWIN ENSUITE



### ENSUITE BDRM 4

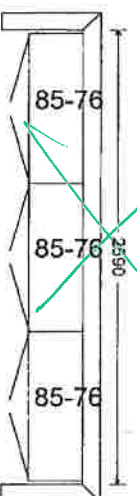


### MASTER ENSUITE



-upg 1

### LAUNDRY (OPTIONAL)



20F3

New Image Kitchens Inc.

Scale:	Approved by:	Drawn by:
Date: 24/02/17		LAGER
		Revised:

BELLE AIR SHORES, INNISFIL

Drawing number:

MODEL: 36-05

6" Riser.

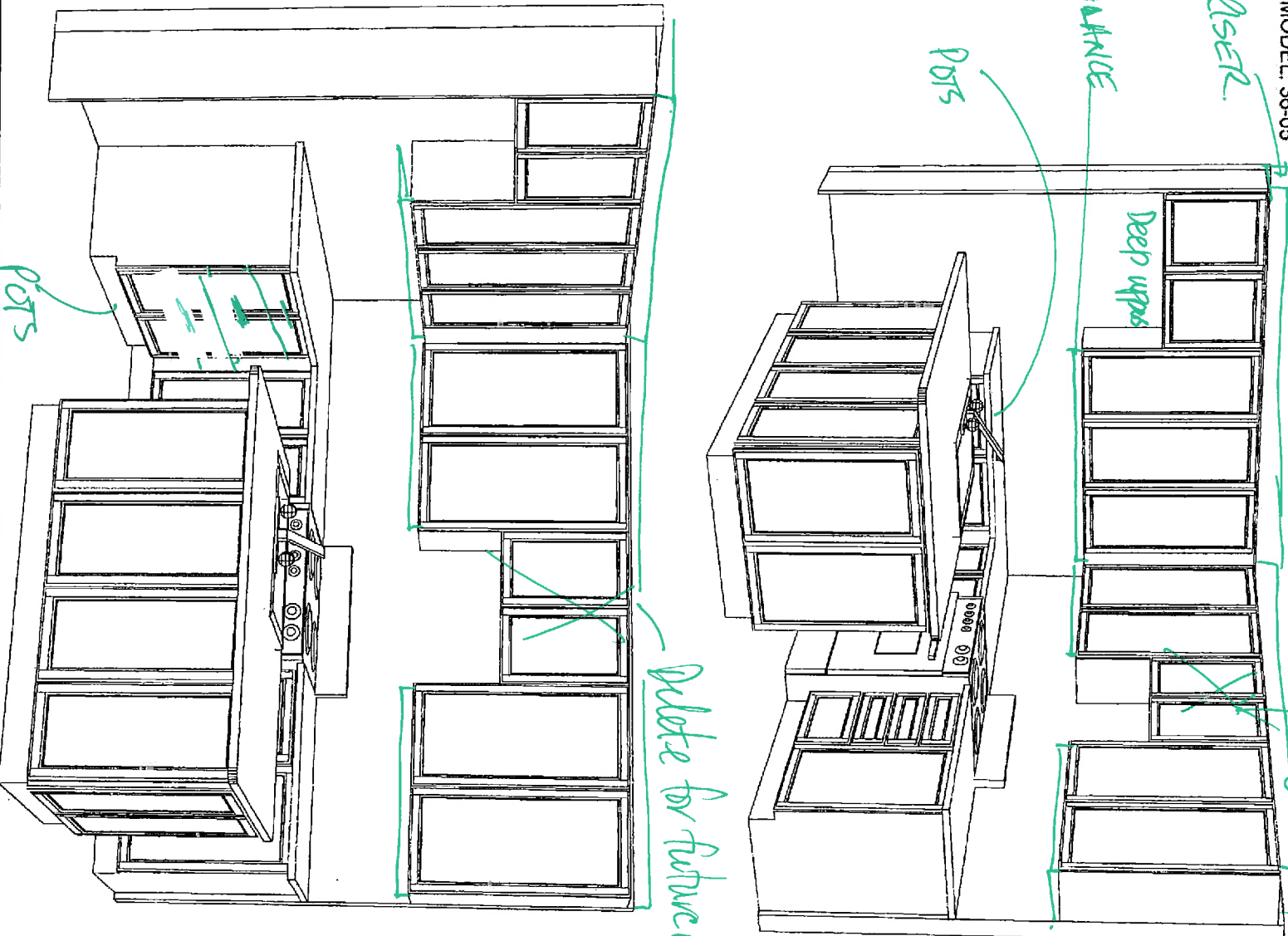
MAINTENANCE

Deep upper

POTS

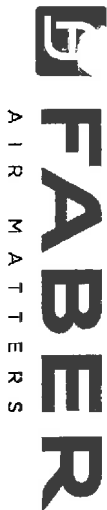
Delete  
for future  
chambers

Delete for future chambers

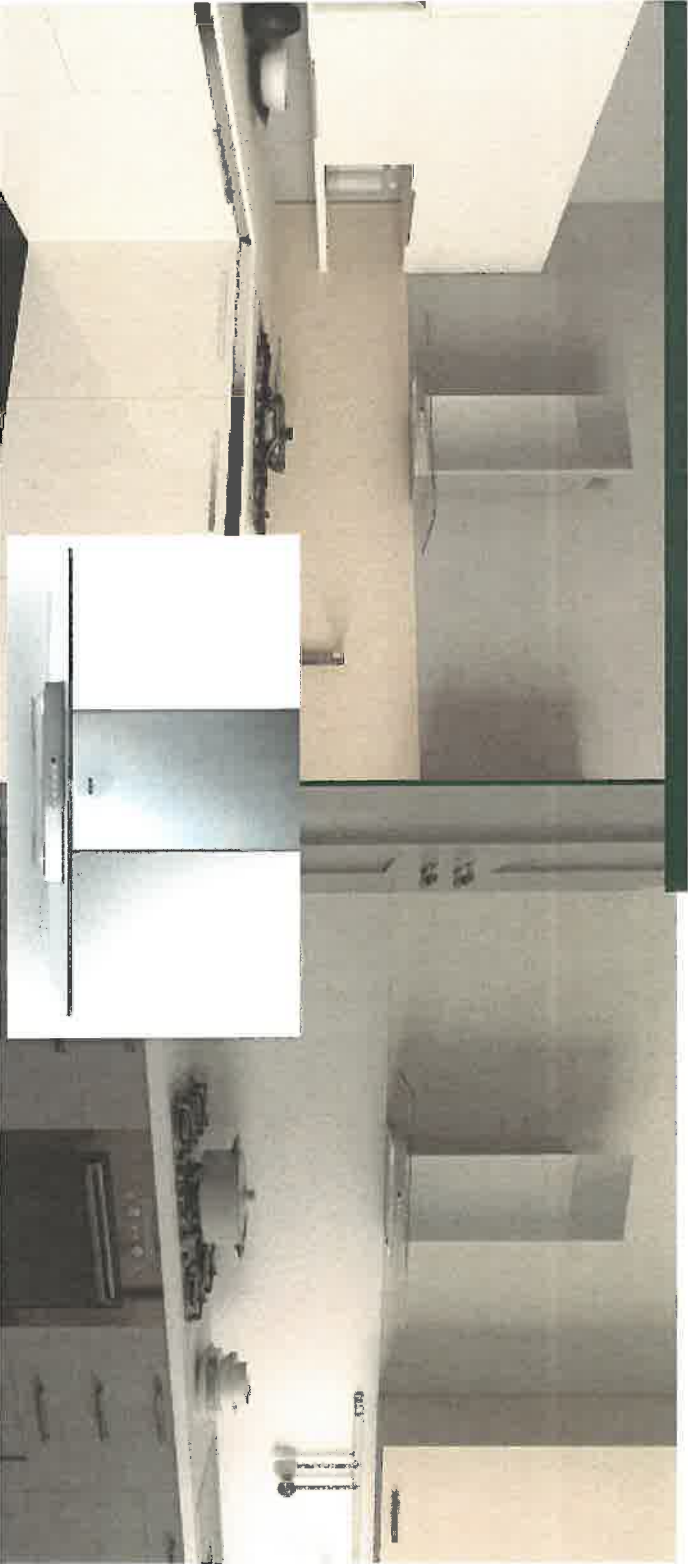


POTS

# GLASSY WALL RANGE HOOD



AN UPDATED GLASS WALL HOOD WITH ADVANCED FEATURES. The new and improved Glassy by Faber features a stunning flat glass body with advanced electronic controls, an optional remote control and two level energy efficient LED lights. Available with a 600 or 300 cfm motors, the Glassy delivers your choice of performance level in a stylish and contemporary flat glass wall range hood.



## AVAILABLE MODELS

Model #	Size / Color	Motor Class (CFM)	Sound Levels (sones)
GLAS30SS600-B	30" Stainless	600 CFM	2.8 - 7.5
GLAS36SS600-B	36" Stainless	600 CFM	2.8 - 7.5
GLAS30SS300-B	30" Stainless	300 CFM	2.5 - 5.0
GLAS36SS300-B	36" Stainless	300 CFM	2.5 - 5.0

167  
150 160N

## KEY FEATURES



**Backlit electronic controls**  
Backlit electronic controls with a White LED light to indicate the current speed and two level lighting



**LED bulbs**  
Low consumption: 1 watt LED bulbs with a dimmer light up your cooking but use very little energy



**Remote Control (optional)**  
Control all features of the hood from the convenience of a wireless remote control (sold separately)



**Ductless Chimney**  
An upper chimney with return air grates on the side is included. Just purchase the ductless kit to complete the ductless installation.

GLASSY WALL RANGE HOOD



SPECIFICATIONS

min. / max. ceiling height	8' 2" - 9' 3/16"
convertible to ductless / recirculating	yes - kit sold separately
canopy depth / height	18 1/2" d / 1 11/16" h
high ceiling kit	yes - reaches up to 11' ceilings
controls	4 speed electronic w/ white led
lighting	2 x 1 (w) led - two level
ducting top	6" round
grease filters	dishwasher safe mesh
10 minute intensive speed	yes
15 minute auto shut off	yes
ADA compliant	yes (with remote control purchase)
power cord included	yes
AC power	320 watts / 2.7 amps (600 cfm model)

PERFORMANCE (600 CFM Motor shown)

	SPEED	1	2	3	BOOST
CFM		150	350	450	560
Sones		2.8	4.3	6.0	7.5

ACCESSORIES

- # FILTER2 -  
Charcoal Filter Kit

High quality charcoal filter for use when recirculating the air back into the kitchen. Filters out odor and should be replaced every 6 months
- # REMCTRL -  
Remote Control

Control all features of the hood from the convenience of a wireless remote control
- # HIGH3 -  
High Ceiling Kit

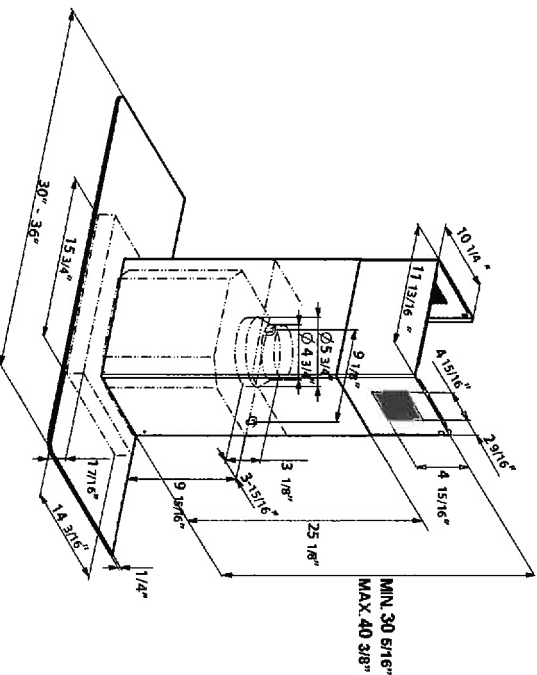
High ceiling kit replaces the upper chimney with a taller chimney to reach up to 10' 9 10/16"
- # WIREBOX -  
Fixed Wiring Box

Replace the power cord with a hard wired box to power the range hood
- # DUCT4 -  
Ductless Conversion Kit

To convert the Glassy to ductless, this kit includes charcoal filters and a diverter to send the air thru the side grates on the upper chimney.
- # MUDAMPER6 / MUDAMPER8 -  
Universal Make-Up Air Damper

Satisfies make-up air requirements, this kit uses an air switch to activate the make-up air damper to open and bring fresh air into the home when the hood fan is on. It then closes tightly when the hood is off. The CFM level is not reduced with this accessory.

DIMENSIONS



Rev. 6/16

2 Cabot Road Hudson, MA 01749 • TEL: (508) 358-5353 • E-Mail: info@faberonline.com [www.faberonline.com](http://www.faberonline.com)

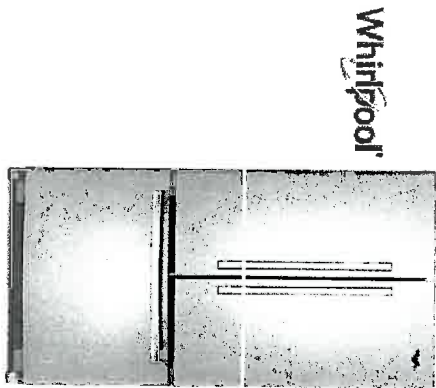
WARNING! Product specifications are subject to change without notification. Consult the installation instructions before you begin installing this range hood



Imagined in Italy



Print 



Whirlpool® 20 cu. ft. French Door Refrigerator with Counter Depth Styling

BASE MSRP  
\$2,649.99

Choose A Color  
Monochromatic Stainless Steel

4.2

400 Reviews Write a Review

where to buy  
Add to Compare



AVAILABLE COLOR OPTIONS



Monochromatic Stainless Steel - WRF540CWBW

OVERVIEW FEATURES SPECIFICATIONS RATINGS & REVIEWS MANUALS

Whirlpool® 20 cu. ft. French Door Refrigerator with Counter Depth Styling

Storing all of your favorite fresh and frozen foods is easy with this 20 cu. ft. capacity French door refrigerator. And, you won't have to sacrifice kitchen space thanks to counter depth styling, which offers a premium, built-in look that fits virtually flush with your current counters and other kitchen fixtures. Keep food at the right temperature without wasting energy with the Accu-Chill™ temperature management system, which uses built-in sensors to measure internal temperature and activates the compressor only when necessary. Plus, food will look just as it should with energy-efficient LED lights, which cast a more natural light. You'll even be ready for special occasions with the temperature-controlled full-width pantry that easily fits wide items like party platters and sheet cakes.

why you'll love it...

Frameless Glass Shelves

Store more items on each shelf with walk-to-wall frameless glass shelves, which offer greater flexibility.

Temperature-Controlled Full-Width Pantry

Store wide items like party platters and sheet cakes or preserve large amounts of meat and cheese with the temperature-controlled full-width pantry.

Adjustable Gallon Door Bins

LOT 150 10X1574C

Whirlpool® Bottom Mount Refrigerator

PRODUCT MODEL NUMBERS

WRF532SMB      WRF540CWB  
WRF535SMB      WRF535SWH  
WRF535SWB

Electrical: A 115-volt, 60-Hz, AC-only, 15- or 20-amp fused, grounded electrical supply is required. It is recommended that a separate circuit serving only your refrigerator be provided. Use an outlet that cannot be turned off by a switch. Do not use an extension cord.

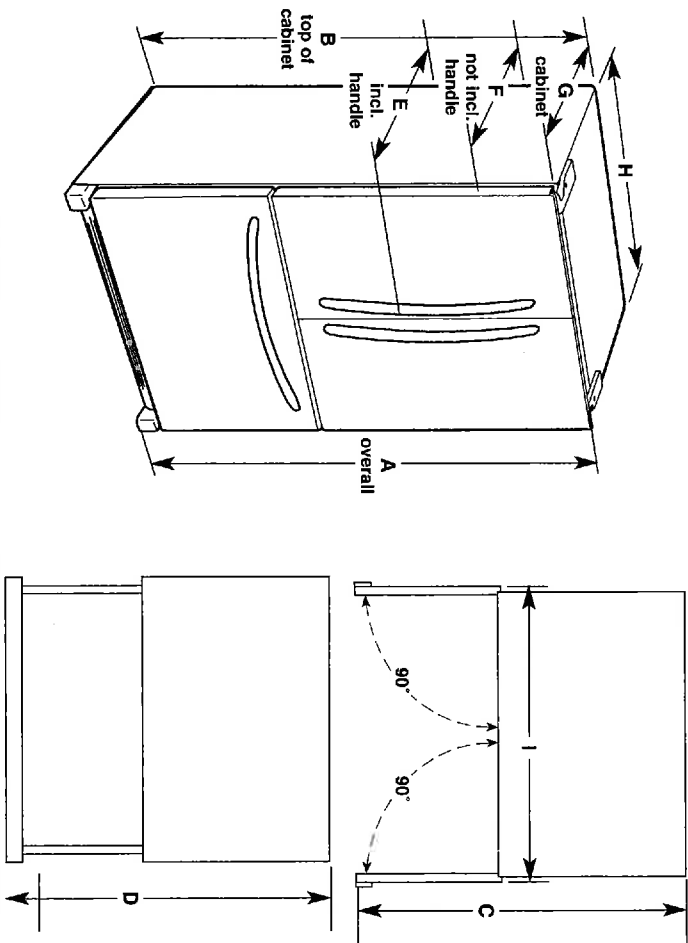
NOTE: Before performing any type of installation, cleaning, or removing a light bulb, turn the control (Thermostat, Refrigerator or Freezer Control depending on the model) to OFF and then disconnect the refrigerator from the electrical source. When you are finished, reconnect the refrigerator to the electrical source and reset the control (Thermostat, Refrigerator or Freezer Control depending on the model) to the desired setting. See "Using the Controls."

Water: A cold water supply with water pressure between 30 and 120 psi (207 and 827 kPa) is required to operate the ice maker and water dispenser. If you have questions about your water pressure, call a licensed, qualified plumber.

IMPORTANT: The pressure of the water coming out of a reverse osmosis system going to the water inlet valve of the refrigerator needs to be between 35 and 120 psi (241 and 827 kPa).

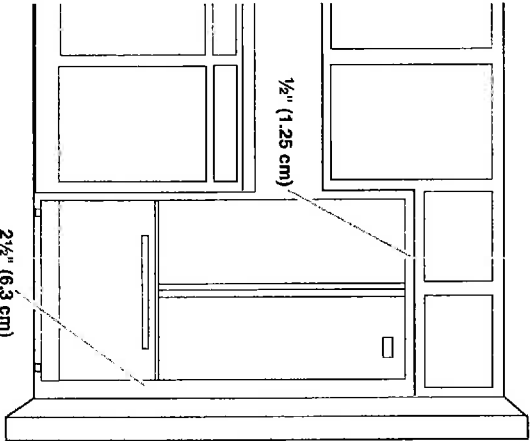
Reverse Osmosis Water Supply: If a reverse osmosis water filtration system is connected to your cold water supply, the water pressure to the reverse osmosis system needs to be a minimum of 40 to 60 psi (276 to 414 kPa).

PRODUCT DIMENSIONS



Model Number/Size	Height - Overall "A"	Height - Top of Cabinet "B"	Depth - Doors Open 90° "C"	Depth - Drawer Open "D"	Depth - Handles "E"	Depth - Without Handles "F"	Depth - Cabinet Only "G"	Width - Cabinet "H"	Width - Door Open 90° With Handles "I"
WRF532SMB 25.2 cu. ft.	70 1/8" (178.1 cm)	68 3/8" (174.8 cm)	48 1/8" (122.1 cm)	53 1/8" (135 cm)	35 1/8" (90 cm)	32 3/8" (83.7 cm)	29 1/8" (74 cm)	35 3/8" (90.5 cm)	43 3/8" (110.2 cm)
WRF535SMB 25.2 cu. ft.	70 1/8" (178.1 cm)	68 3/8" (174.8 cm)	48 1/8" (122.1 cm)	53 1/8" (135 cm)	35 1/8" (90 cm)	32 3/8" (83.7 cm)	29 1/8" (74 cm)	35 3/8" (90.5 cm)	43 3/8" (110.2 cm)
WRF532SMB 22.1 cu. ft.	70 1/8" (178.1 cm)	68 3/8" (174.8 cm)	42 3/8" (107.6 cm)	52 1/8" (132.4 cm)	34 1/8" (87.5 cm)	31 3/8" (81.1 cm)	28 1/8" (71.4 cm)	32 3/8" (82.9 cm)	40 3/8" (102.6 cm)
WRF540CWB 20 cu. ft.	70 1/8" (178.1 cm)	68 3/8" (174.8 cm)	43 1/8" (109.4 cm)	44 1/8" (113.0 cm)	29 3/8" (74.6 cm)	28" (71.1 cm)	24 1/8" (61.3 cm)	35 3/8" (90.5 cm)	43 3/8" (110.2 cm)
WRF535SWH 25.2 cu. ft.	70 3/8" (178.1 cm)	68 7/8" (174.9 cm)	48 1/8" (122.2 cm)	52 1/8" (132.4 cm)	35 1/2" (90.2 cm)	33" (83.8 cm)	29 3/8" (74 cm)	35 3/8" (90.5 cm)	41" (104.1 cm)

LOCATION REQUIREMENTS

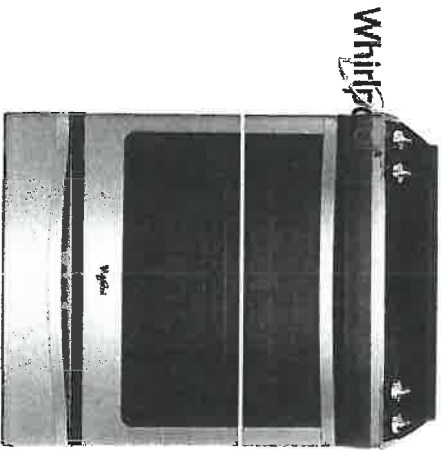


To ensure proper ventilation for your refrigerator, allow for a 1/2" (1.25 cm) space on each side and at the top. Allow for 1" (2.54 cm) of space behind the refrigerator. If your refrigerator has an ice maker, make sure you leave some extra space at the back for the water line connections.

If you are installing your refrigerator next to a fixed wall, leave 2 1/2" (6.3 cm) minimum on the hinge side (some models require more) to allow for the door to swing open.

NOTE: This refrigerator is intended for use in a location where the temperature ranges from a minimum of 55°F (13°C) to a maximum of 110°F (43°C). The preferred room temperature range for optimum performance, which reduces electricity usage and provides superior cooling, is between 60°F (15°C) and 90°F (32°C). It is recommended that you do not install the refrigerator near a heat source, such as an oven or radiator.

LOT 150 10A157C



Print

Whirlpool 6.2 cu. ft. Front-Control Electric Stove with TimeSavor™ Convection

BASE MSRP  
\$1,799.99

Choose A Color  
Stainless Steel

4.4  
844 Reviews Write a Review

where to buy

Add to Compare

AVAILABLE COLOR OPTIONS



Stainless Steel - YWEE730H0DS

4 SHARE

- OVERVIEW
- FEATURES
- SPECIFICATIONS
- RATINGS & REVIEWS
- MANUALS
- RELATED MODELS & ACCESSORIES

Whirlpool 6.2 cu. ft. Front-Control Electric Stove with TimeSavor™ Convection

Leave unnecessary meal prep behind with the 6.2 cu. ft. front-control electric stove that fits your kitchen and delivers delicious results. TimeSavor™ convection cooking helps you cook tastier roasts and bake bread with just the right texture in less time than non-convection ovens. You'll be able to skip the preheat and cook frozen favorites faster in this self-cleaning stove with Frozen Bake™ technology. And thanks to the FIT system, it's easy to upgrade to a full-depth range made to fit in your existing kitchen cutout. When it's time for cleanup, Aqualift™ self-cleaning technology helps you wipe away messes without harsh chemicals or odors.

Why you'll love it...

6.2 cu. ft. Capacity

The 6.2 cu. ft. oven has room to bake and roast holiday dishes, so there's always enough space to handle even your largest meals.

Frozen Bake™ Technology

Skip preheating for favorites like pizza, lasagna, chicken nuggets, fries or pies so you can cook frozen foods faster!

Full-Depth Slide-In Range with the FIT System

Upgrade to a full-depth slide-in range that fits both your life and your range cutout thanks to the FIT system.

105150 144

- Cabinet opening dimensions that are shown must be used. Given dimensions are minimum clearances.
- The anti-tip bracket must be installed. To install the anti-tip bracket shipped with the range, see "Install Anti-Tip Bracket" section.
- Grounded electrical supply is required. See the appropriate "Electrical Requirements" section.
- Contact a qualified floor covering installer to check that the floor covering can withstand at least 200°F (93°C).
- Use an insulated pad or ¼" (0.64 cm) plywood under range if installing range over carpeting.

**IMPORTANT:** To avoid damage to your cabinets, check with your builder or cabinet supplier to make sure that the materials used will not discolor, delaminate or sustain other damage. This oven has been designed in accordance with the requirements of UL and CSA International and complies with the maximum allowable wood cabinet temperatures of 194°F (90°C).

#### Mobile Home - Additional Installation Requirements

The installation of this range must conform to the Manufactured Home Construction and Safety Standard, Title 24 CFR, Part 3280 (formerly the Federal Standard for Mobile Home Construction and Safety, Title 24, HUD Part 280). When such standard is not applicable, use the Standard for Manufactured Home Installations, ANSI A225.1/NFPA 501A or with local codes.

In Canada, the installation of this range must conform with the current standards CAN/CSA-A240-latest edition, or with local codes.

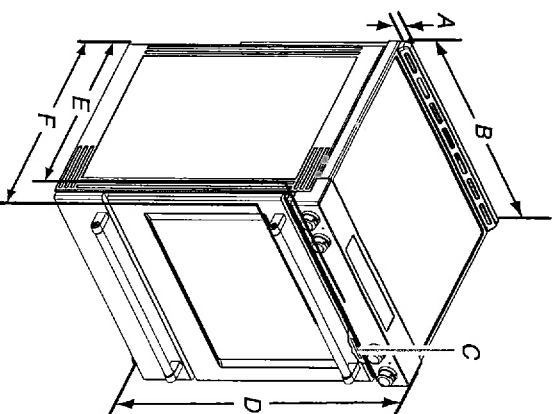
#### Mobile Home Installations Require:

- When this range is installed in a mobile home, it must be secured to the floor during transit. Any method of securing the range is adequate as long as it conforms to the standards listed above.
- Four-wire power supply cord or cable must be used in a mobile home installation. The appliance wiring will need to be revised. See "Electrical Connection - U.S.A. Only" section.

#### Product Dimensions

This manual covers several models. Your model may appear different from the models depicted. Dimensions given are maximum dimensions across all models.

Model KSEB900



- A. 1 3/8" (3.0 cm) height from cooktop to top of vent
- B. 29 7/8" (75.9 cm)
- C. Model/serial/rating plate (located behind the oven door on the top right-hand side of the oven frame)
- D. 36" (91.4 cm) height to top of cooktop edge with leveling legs screwed all the way in\*
- E. 28 5/8" (71.9 cm) max. depth from front of console to back of range
- F. 28 7/8" (73.3 cm) max. depth from handle to back of range

**IMPORTANT:** Range must be level after installation. Follow the instructions in the "Level Range" section. Using the cooktop as a reference for leveling the range is not recommended.

\*Range can be raised approximately 1" (2.5 cm) by adjusting the leveling legs.

157 150 140

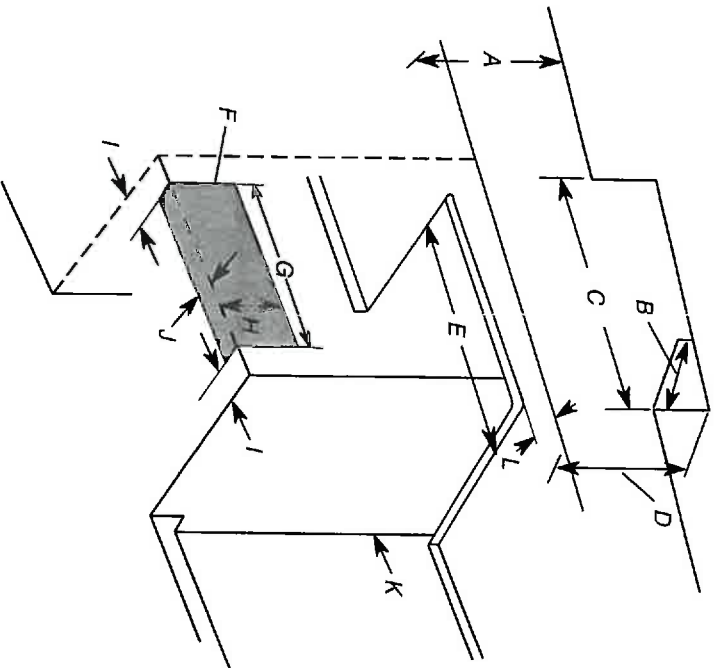
## Cabinet Dimensions

Cabinet opening dimensions shown are for 25" (64.0 cm) countertop depth, 24" (61.0 cm) base cabinet depth and 36" (91.4 cm) countertop height.

**IMPORTANT:** If installing a range hood or microwave hood combination above the range, follow the range hood or microwave hood combination installation instructions for dimensional clearances above the cooktop surface. Range may be installed next to combustible walls with zero clearance.

**NOTE:** When installed in a slide-in cutout, the front of oven door may protrude beyond the base cabinet.

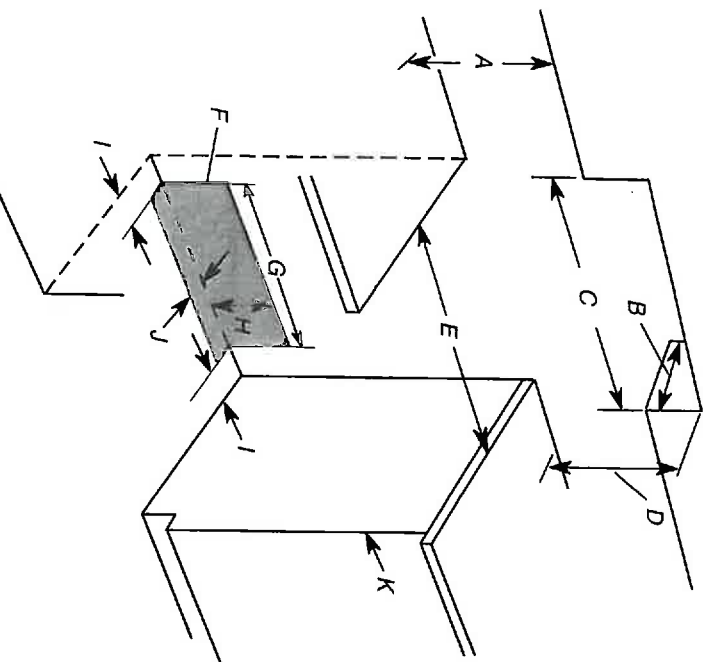
### Freestanding Cutout



- A. 18" (45.7 cm) upper side cabinet to countertop
- B. 13" (33 cm) max. upper cabinet depth
- C. 30" (76.2 cm) min. opening width
- D. For minimum clearance to top of cooktop, see NOTE\*.
- E. 30" (76.2 cm) min. opening width
- F. The shaded area is recommended for installation of grounded outlet.
- G. 13 1/8" (33.3 cm)
- H. 7 1/16" (19.5 cm)
- I. 4 13/16" (12.2 cm)
- J. 3 1/16" (9.4 cm) Plus measurement of L
- K. Cabinet door or hinges should not extend into the cutout.
- L. Remaining counter depth should not exceed 2 1/4" (5.7 cm).

**\*NOTE:** 24" (61.0 cm) minimum when bottom of wood or metal cabinet is shielded by not less than 1/4" (0.64 cm) flame retardant millboard covered with not less than No. 28 MSG sheet steel, 0.015" (0.4 mm) stainless steel, 0.024" (0.6 mm) aluminum or 0.020" (0.5 mm) copper.


30" (76.2 cm) minimum clearance between the top of the cooking platform and the bottom of an uncovered wood or metal cabinet.



- A. 18" (45.7 cm) upper side cabinet to countertop
- B. 13" (33 cm) max. upper cabinet depth
- C. 30" (76.2 cm) min. opening width
- D. For minimum clearance to top of cooktop, see NOTE\*.
- E. 30" (76.2 cm) min. opening width
- F. The shaded area is recommended for installation of grounded outlet.
- G. 13 1/8" (33.3 cm)
- H. 7 1/16" (19.5 cm)
- I. 4 13/16" (12.2 cm)
- J. 3 1/16" (9.4 cm)
- K. Cabinet door or hinges should not extend into the cutout.

187/50/ND



  
Whirlpool® Dishwasher  
AccuSense® Soil Sensor

0.0

[Write a Review](#)

Make sure dishes come out clean. The determines how dirty dishes are and ac needed for customized cleaning. This e is ENERGY STAR® qualified and holdi quietly at 55 dBA and remembers your to. Plus, it cleans a lightly soiled load in 1-Hour wash cycle, so you have clean i hurry. It's all from the brand that can sea 18 years in a row.

Top Features

additional features...

Soil Sensor

Determines how dirty dishes are and adjusts the Normal cycle as needed to make sure dishes come out clean.

Normal Cycle

Use for normal amounts of food soil to clean up leftover messes from your day-to-day meals.

Heavy Cycle

Take care of heavily-soiled messes and other hard-to-clean dishes without the extra elbow grease by adding extra time to the cycle.

High Temperature Wash Option

Heated Dry Option

Use a clean, dry dish straight from the dishwasher thanks to added heat for drying. For optimal drying results, use this option with hose aid.

ENERGY STAR® Certified

Exceeds government standards to help conserve natural resources and save money on utility bills.

Designed, Engineered and Assembled in the U.S.A. with American Pride

Configuration and Overview

Tub Material :	Vinyl
Rack Material :	Removable Filter
Water Filtration System :	No
Adjustable Rack :	Kosher Consumer Friendly
Star-K Compliant :	ENERGY STAR® Qualified
Energy Star® Qualified Capacity :	13
Controls	Plastic

LOT 150 140

Tub Material :  
Rack Material :  
Upper Rack Extras :  
Silverware Basket Type :  
Upper Adjustable Rack :  
Decibel Level :

Vinyl  
1-5" Cup Shelf  
Full Length Non Splittable  
No  
55

Cycle and Options  
Number of Wash Cycles :  
Cycle Selections :  
Option Selections :

3  
1-Hour Wash, Heavy, Normal  
4 Hour Delay, Control Lock, Heated Dry, Hi Temp Wash

Dimensions  
See Dimension Guide for ~~Model~~ Measurements  
Height :  
Depth :  
Width :  
Maximum Height :  
Minimum Height :  
Depth With Door Open 90 Degree :

24 1/2  
23 7/8  
34 1/2  
33 1/2  
49 1/2

This product has been  
transitioned to  
WDF330PAHW, but there  
may be limited availability  
at your local retailer.

Register this product  
Manuals & Literature  
Schedule Service

This online merchant is located in Canada at 200-6750 Century Avenue, Mississauga, ON L5N 0B7

MSPR is Manufacturer's Suggested Retail Price and may not necessarily be the price at which the product is sold in the consumer's area. Dealer alone determines actual price.

® Registered Trademark TM Trademark of Whirlpool, U.S.A. © 2017 Whirlpool Corporation. All Rights Reserved. All other trademarks are owned by their respective companies.

lot 150 10N



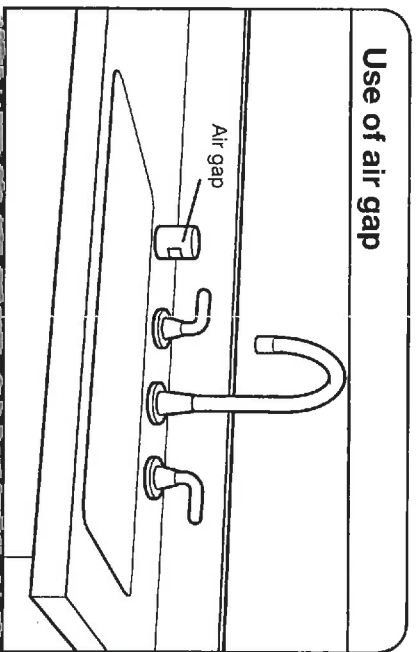
## Undercounter Dishwasher

### PRODUCT MODEL NUMBERS

WDF110PAB	WDF320PAD	WDTT10PAH
WDF111PAB	WDF330PAH	WDTT20PAD
WDF120PAF	WDF331PAH	WDTT30PAH
WDF121PAF	WDF320PAD	WDTT35PAG
WDF130PAH	WDF540PAD	WDTT35PAH
WDF131PAH	WDF545PAF	

### DRAIN REQUIREMENTS

- A new drain hose is supplied with your dishwasher. If drain hose is not long enough, use a new drain hose with a maximum length of 12 ft (3.7 m) that meets all current AHAM/IAPMO test standards, is resistant to heat and detergent, and fits the 1" (25 mm) drain connector of the dishwasher. See the "Tools and Parts" section at the front of the guide for part details and orders.
- Make sure to connect drain hose to waste tee or disposer inlet above drain trap in house plumbing and 20" (508 mm) minimum above the floor. It is recommended that the drain hose either be looped up and securely fastened to the underside of the counter or be connected to an air gap.
- Make sure to use an air gap if the drain hose is connected to house plumbing lower than 20" (508 mm) above subfloor or floor.



- If required, the air gap should be installed in accordance with the air gap installation instructions. When you are connecting the air gap, a rubber hose (not provided) will be needed to connect to the waste tee or disposer inlet.
- Use 1/2" minimum I.D. drain line fittings.

### WATER SUPPLY REQUIREMENTS

- This dishwasher has a water heating feature and also requires a connection to a hot water supply line.
- A hot water line with 20 to 120 psi (138 to 862 kPa) water pressure can be verified by a licensed plumber.
- 120°F (49°C) water at dishwasher
- 3/8" O.D. copper tubing with compression fitting or flexible braided water supply line. See the "Tools and Parts" section at the front of the guide for part details and orders.

**NOTE:** 1/2" minimum plastic tubing is not recommended.

- A 90° elbow with 3/4" hose connection with rubber washer. See the "Tools and Parts" section at the front of the guide for part details and orders.
- Do not solder within 6" (152 mm) of the water inlet valve.
- If installed in new construction, make sure the house water supply lines have been flushed prior to connecting the dishwasher to remove any debris that may exist in the supply line.

**NOTE:** If replacing an existing dishwasher, it is recommended to install a new water line (see the "Tools and Parts" section at the front of the guide for part details) and drain hose (supplied with the new dishwasher).

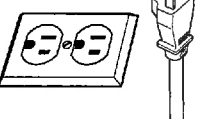
### ELECTRICAL REQUIREMENTS

#### You Must Have:

- 120-volt, 60 Hz, AC-only, 15- or 20-amp, fused electrical supply
  - Copper wire only
  - A maximum of 2 field wiring supply conductors (12 AWG largest size) plus 1 grounding conductor are permitted in the terminal box.
- We Recommend:
- A time-delay fuse or circuit breaker
  - A separate circuit

#### If Connecting Dishwasher with a Power Cord:

- Use a UL Listed power cord kit marked for use with dishwasher. See the "Tools and Parts" section at the front of the guide for part details and orders.
- Plug into a grounded 3 prong outlet. Outlet must meet all local codes and ordinances.



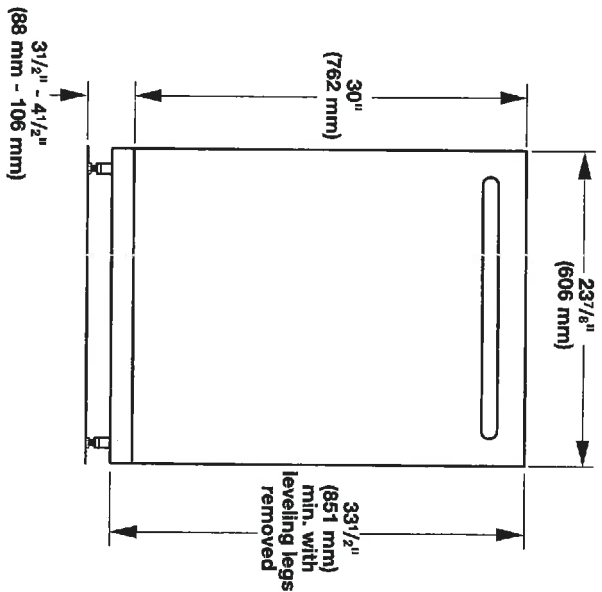
#### If Connecting Dishwasher with Direct Wiring:

- Use flexible, armored, or nonmetallic sheathed copper wire with grounding wire that meets the wiring requirements for your home and local codes and ordinances.
- Use a UL Listed/CSA Approved metallic strain relief.

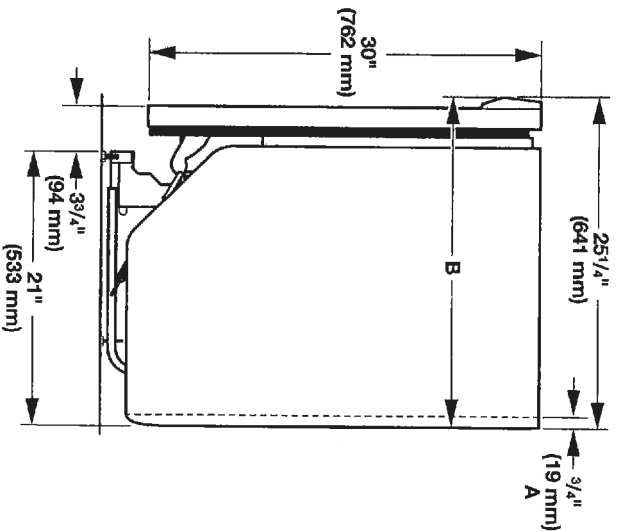


105 150 140

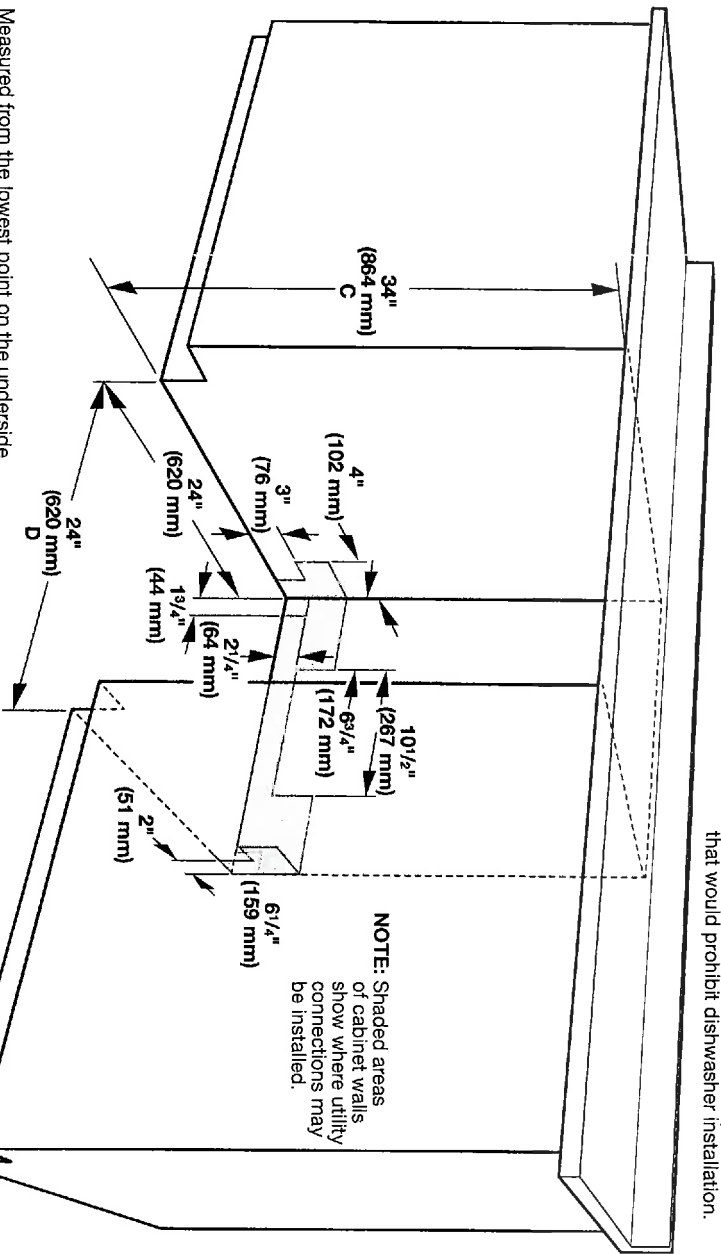
PRODUCT AND CABINET OPENING DIMENSIONS



For 4" (100 mm) toe kick, height of cabinet opening is 34 <sup>1</sup>/<sub>2</sub>" (863 mm).



Check that all surfaces have no protrusions that would prohibit dishwasher installation.



- C. Measured from the lowest point on the underside of the countertop. May be reduced to 33 <sup>1</sup>/<sub>2</sub>" (851 mm) by removing the wheels and perforated area of insulation (blanket) on dishwasher.
- D. Minimum, measured from narrowest point of opening.

Because Whirlpool Corporation policy includes a continuous commitment to improve our products, we reserve the right to change materials and specifications without notice.

Dimensions are for planning purposes only. For complete details, see installation instructions packed with product. Specifications subject to change without notice.



COAST Wholesale  
APPLIANCES

COAST WHOLESALE APPLIANCES INC  
#1 - 1748 CREDITSTONE ROAD, VAUGHAN, ON  
L4K 5V8 \*\*\* TOLL FREE 1-888-745-0622  
PH: (905) 303-6909 FX: (905) 856-5325



CHBA  
MEMBER  
Since 1978

"Innovative Products for Builders, Designers & Home Owners"

**Sold** ZANCOR HOMES (INNISFIL) LTD.  
**To:** (BELLE AIRE SHORES)  
137 BOWES ROAD  
CONCORD  
ON L4K 1H3

**Ship** ZANCOR HOMES (INNISFIL) LTD.  
**To:** INVENTORY

SALES ORDER  
QUOTATION

905-738-7010

Sales Representatives		P.O.#	Terms		Prov.Tax #	Customer #	Quote #
F8 WAYNE W/18,7		Lot 150	ET 30 DAYS			GO481	1913876-01
Quantity	Model / Description	Shipping Location	Date Quoted	Date Required			Document Type
Quoted		WOODBIDGE WHSE	01 JUN 17	15 JUN 17			SALES PROPOSAL
					Price		Extension
1	WRF540CWBM	WHIRLPOOL 19.9 CUFT FRENCH DOOR FRIDGE INT WATER SS			2,195.00		2,195.00
1	YWEE730HODS	WHIRLPOOL SS ELECTRIC CERAN RANGE AQUA LIFT SELF CLEAN FAN CONVECTION			1,050.00		1,050.00
* 1	GLAS30SS600-B	FABER GLASSY 30" SS WALL HOOD 600 CFM			1,095.00		1,095.00
1	WDF320PADS	WHIRLPOOL PLASTIC TUB D/WASHER S/S 3 CYCLES,4 OPTIONS,13 SETTINGS			350.00		350.00
1	NTW4516FW	AMANA 4.0 CUFT TOP LOAD WASHER WHT			420.00		420.00
1	YNED4655EW	AMANA 6.5 CUFT DRYER 11 CYCLES,3 TEMP WHT, AUTO DRY			360.00		360.00
1	48372	EZ FLO STAINLESS STEEL BRAIDED 6" WASHING MACHINE FILL HOSE			20.00		20.00
1	INSTALLATION HOOKUP	INSTALLATION - HOOKUP WATERLINE TO FRIDG			125.00		125.00
1	INSTALLATION/H/FAN	INSTALLATION OF HOOD FAN			150.00		150.00
1	INSTALLATION OF STND	INSTALLATION OF STANDARD PACKAGE			155.00		155.00
1	PFA	PACKAGE FREIGHT ALLOWANCE INCLUDED					
11							

"Quote Valid for 15 Days from Quote Date"

SUBTOTAL	5,920.00
PST	
DEL/FUEL S/C	
HST	769.60
TOTAL	6,689.60