



CONSTRUCTION SUMMARY

PURCHASER: *Inventory* Belle Aire Shores - Zancor Homes (Innisfil) Ltd.

TEL: RES.: 416-8437

LOT / PHASE	HOUSE TYPE	PRINT DATE
120 / 1	GALLEY (36-05) ELEV B	2-Oct-17

Ref#	Quantity	Description	Approved	Notes
3966		SMOOTH CEILINGS ON MAIN FLOOR, UPPER HALL AND MASTER BEDROOM	12Jun17	
3967		ELECTRICAL - LED POTLIGHTS IN KITCHEN (4) ON SEP SWITCH **STD TO BE INSTALLED OVER ISLAND	12Jun17	
3968		ELECTRICAL - LED POTLIGHTS IN GREAT ROOM (6) ON SEP SWITCH *STD TO REMAIN	12Jun17	
3969		ELECTRICAL - LED POTLIGHTS IN DINING (7) ON SEP SWITCH, STD TO REMAIN	12Jun17	
3970		ELECTRICAL - LED POTLIGHTS IN FOYER (2) ON SAME SWITCH WITH STANDARD	12Jun17	
3971		ELECTRICAL - ROUGH IN WITH SWITCH FOR FUTURE VALANCE LIGHTING	12Jun17	
3972		8 FOOT HIGH GARAGE MAIN DOOR	12Jun17	
3973		8 FOOT HIGH INTERIOR DOORS ON MAIN FLOOR	12Jun17	
3974		DOUBLE SINKS IN MAIN BATH IN LIEU OF SINGLE	12Jun17	
3975		TRAY CEILING IN MASTER BEDROOM	12Jun17	
3976		FRAMELESS GLASS SHOWER IN MASTER ENSUITE	12Jun17	
4900		APPLIANCE PACKAGE (NO HST ADDED)	02Oct17	
4901		KITCHEN CABINETS- INSTALL POTS & PANS DRAWERS (SET OF 3)	02Oct17	
4902		KITCHEN - WATER LINE FOR FRIDGE	02Oct17	
4903		KITCHEN- CABINETS UPG(2)	02Oct17	
4904		KITCHEN- BACKSPLASH & BEHIND HOOD FAN - UPG (2) - 3" X 6" BEVELLED TILE W/ BRICK PATTERN	02Oct17	
4905		KITCHEN - COUNTERTOP UPG (2) - K-STONE #K401	02Oct17	
4906		KITCHEN ISLAND - COUNTERTOP UPG (2) K-STONE #K401	02Oct17	
4907		KITCHEN - UPG SINGLE HANDLE PULLDOWN KITCHEN FAUCET - ARBOR	02Oct17	
4908		KITCHEN -UPG UNDRMOUNT SINK- BLANCO QUATRUS #R15 U SUPER SINGLE	02Oct17	
4909		KITCHEN - DELETE UPPER CABINETS ABOVE STOVE TO ACCOMMODATE HOOD FAN - VENT TO BE CENTERED (AS PER SPECS)	02Oct17	
4910		KITCHEN - UPG (2) CROWN MOULDING	02Oct17	
4911		KITCHEN -DEEP UPPEERS ABOVE FRIDGE W/(2) GABLES	02Oct17	
4912		BATHROOM ACCESSORIES - UPG IN LIEU OF STD \$75.00 EACH INSTALL BATHROOM ACCESSORIES IN POWDER ROOM, MASTER ENSUITE /MAIN BATH-	02Oct17	
4913		MASTER ENSUITE - UPG (4) 12" X 24" FLOOR TILE	02Oct17	
4914		MASTER ENSUITE - UPG(2) 4" X 16" SHOWER WALL TILE	02Oct17	
4915		MASTER ENSUITE - SHOWER WALL TILE 8" X 10" TO BE INSTALLED "BRICK PATTERN"	02Oct17	



CONSTRUCTION SUMMARY

Belle Aire Shores - Zancor Homes (Innisfil) Ltd.

PURCHASER: INVENTORY

TEL: RES.: 416-8437

LOT / PHASE	HOUSE TYPE	PRINT DATE
120 / 1	GALLEY (36-05) LEVEL B	2-Oct-17

Ref#	Quantity - Description	Approved	Notes
4916	MAIN BATH - STD SHOWER WALL TILE 8" X 10" TO BE INSTALLED "BRICK PATTERN"	02Oct17	
4917	MAIN BATH - UPG (4) 12" X 14" FLOOR TILE	02Oct17	
5188	STAIN STAIRS TO MATCH HARDWOOD AS CLOSE AS POSSIBLE	02Oct17	
5189	RAILINGS - UPGRADE 3 METAL	02Oct17	
5190	TRIM - STANDARD SIZE - STEP STYLE	02Oct17	
5191	TILE - LAUNDRY - UPGRADE 4	02Oct17	
5192	TILE - FOYER - UPGRADE 4	02Oct17	
5193	TILE - POWDER - UPGRADE 4	02Oct17	
5194	TILE - MUDROOM - UPGRADE 4	02Oct17	
5195	TILE - KITCHEN BREAKFAST - UGRADE 4	02Oct17	
5196	HARDWOOD - UPGRADE 4 SCULPTED DINING GREAT ROOM UPPER HALL IN LIEU OF CARPET	02Oct17	

This Document is Extremely Time Sensitive - Printed 2 Oct 17 at 8:13

ZANCOR HOMES COLOUR CHART

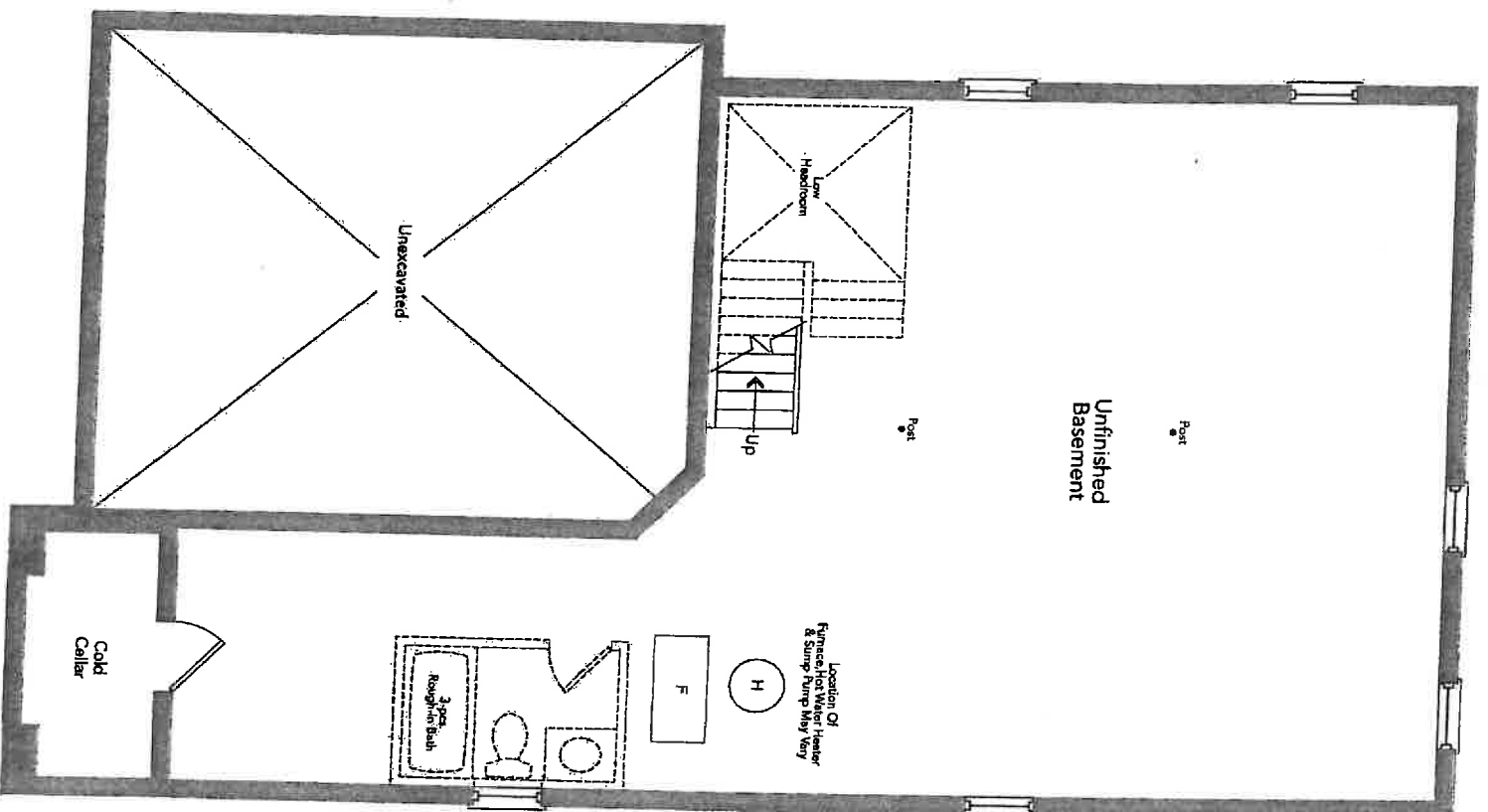
CABINETRY / COUNTERTOPS						
	DOOR STYLE	HARDWARE	COUNTERTOP	EDGE		
Kitchen	UPG (2) ALGONQUIN MDF STONE	H800BC	UPG (2) K-STONE #K-401	C		
Island	UPG (2) ALGONQUIN MDF STONE	H800BC	UPG (2) K-STONE #K-401	C		
Master Ensuite	STD- SIERRA PVC - WHITE	K300C	PEARL SOAPSTONE-4886-38	STD		
Main	STD- SIERRA PVC - WHITE	K300C	PEARL SOAPSTONE-4886-38	STD		
Powder Room	N/A					
Laundry	N/A					
TILES		INSERTS	THRESHOLDS			
Main Foyer	UPG (4) RONDINE -FUORI GRIGIO TUNDRA 12 X 24					
Powder Room	UPG (4) RONDINE -FUORI GRIGIO TUNDRA 12 X 24					
Mud Room	UPG (4) RONDINE -FUORI GRIGIO TUNDRA 12 X 24					
Kitchen Floor	UPG (4) RONDINE -FUORI GRIGIO TUNDRA 12 X 24					
Breakfast Floor	UPG (4) RONDINE -FUORI GRIGIO TUNDRA 12 X 24					
Kitchen Bk.Splash & Behind Hood Fan	UPG (2) CHESS- TENDER GREY - BEVELLED 3" X 6"	BRICK PATTERN				
Laundry						
Mstr Ensuite Floor	UPG (4) GEORGETTE PEARL 12" X 24 TILE					
Mstr Ensuite Shower	UPG (2) 4" X 16" C&D SILVER GREY TILE	BRICK PATTERN				
Mstr Ens Shower Floor	STANDARD WHITE 2 X 2 FLOOR TILE					
Master Shower Jamb	BIANCO CARRARA		BIANCO CARRARA			
Main Bath Floor	UPG (4) 12" X 24" GEORGETTE LIGHT TILE					
Main Bath Tub Wall	STD - UNIWALL TENDER GREY 8"X 10" TILE	BRICK PATTERN	BIANCO CARRARA			
HARDWOOD / CARPET						
Dining Room	UPG (4) 4"-3/8" NORTHERN S.S. SCULPTED RED OAK - PEWTER					
Great Room	UPG (4) 4"-3/8" NORTHERN S.S. SCULPTED RED OAK - PEWTER					
Laundry Room	UPG (4) 4"-3/8" NORTHERN S.S. SCULPTED RED OAK - PEWTER					
Kitchen *(Waiver)	N/A					
Main Foyer *(Waiver)	N/A					
Main Hall	UPG (4) 4"-3/8" NORTHERN S.S. SCULPTED RED OAK - PEWTER					
Upper Hall	UPG (4) 4"-3/8" NORTHERN S.S. SCULPTED RED OAK - PEWTER					
Master Bedroom	STD- OPENING NIGHT COLLECTION - T03					
Bedroom 2	STD- OPENING NIGHT COLLECTION - T03					
Bedroom 3	STD- OPENING NIGHT COLLECTION - T03					
Bedroom 4	STD- OPENING NIGHT COLLECTION - T03					
Carpet Underpad	STANDARD UNDERPAD					
FIREPLACES						
LOCATION	N/A	Opt. Surround	N/A	MANTLE	N/A	
LOCATION		Opt. Surround		MANTLE		
MIRRORS & ACCESSORIES			PLASTER MOULDING			
Mirrors	YES	Opt. Crown Moulding		N/A		
Bathroom Accessories	DELETE ALL WHITE ACCESSORIES	location				
Purchaser has reviewed the colour chart				SITE & LOT		
FOR TRADE USE				INNISFIL	120	



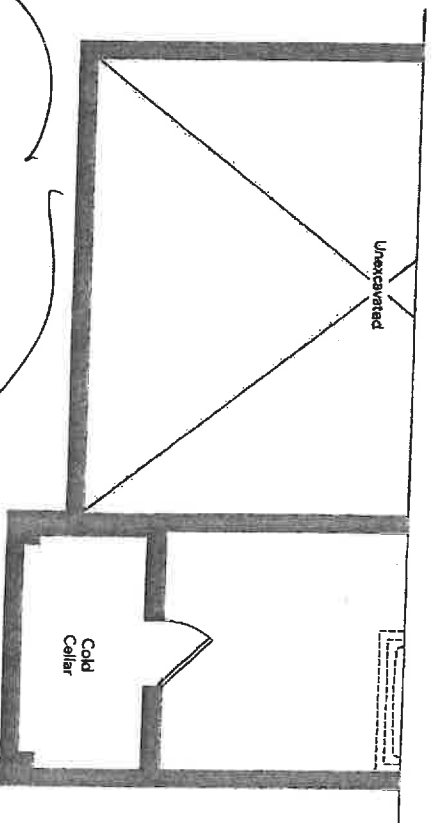
SEP 08 2017

ZANCOR HOMES COLOUR CHART

STAIRS, RAILING & PICKETS & STAIR STAIN				
Stair Stain / Species:	STAIN TO MATCH AS CLOSE AS POSSIBLE.			
White Paint Req'd	N/A			
Main to 2nd Railing Details:	UPG (3) METAL (BLACK) SINGLE			
Main to Basement Railing Details:	COLLAR W/ALT PLAIN PICKETTE			
TRIM				
Casing/Baseboards	STANDARD 2"-3/4" CASING BY 4" BASEBOARD, "STEP STYLE"			
Interior Doors	STANDARD			
Interior Door Hardware	STANDARD			
Exterior Door Hardware	STANDARD			
PAINT				
Kitchen/Breakfast	WARM GREY	Master Beds	WARM GREY	
		Bedroom 2	WARM GREY	
Dining Room	WARM GREY	Bedroom 3	WARM GREY	
Great room	WARM GREY	Bedroom 4	WARM GREY	
		Master Ens.	WARM GREY	
Main/Upper Hall	WARM GREY	Main	WARM GREY	
Laundry	WARM GREY			
Powder Room	WARM GREY			
PLUMBING- UPGRADES TO BE DETAILED ON PES				
	FIXTURES	FAUCETS	NOTES	
Kitchen	YES	YES	UPG SINK & FAUCET	
Powder Room	STANDARD	STANDARD		
Master Ensuite	STANDARD	STANDARD		
Main Bath	STANDARD	STANDARD		
ZANCOR APPLIANCE REQUIREMENTS-UPGRADES TO BE DETAILED ON PES				
Appliance Package received in 'Schedule E'		YES / NO Package Name:		
	UPG (SEE PES)	DECLINED	NOTES	
GAS LINE	NO	NO		
WATERLINE to Fridge	YES	NO		
Hood Fan Venting SIZE	YES 6"	NO	HOOD FAN (SPECS INCL.)	
ELECTRICAL for Built-in Oven	NO	NO		
ELECTRICAL for Built-in Micro / OTR	NO	NO		
ELECTRICAL for Gas Stove / Cooktop	NO	NO		
ELECTRICAL for Bar Fridge	NO	NO		
DISCLAIMER		INITIALS		
Colours of all materials are as close as possible to Builders selection but not necessarily identical due to dye lot variances in manufacturing/manufacturers. Due to construction progress some items may have been pre-selected or installed. In this event the Vendor's selection must be accepted by the purchaser				
Any changes to the colour chart after signing are subject to a \$5000 administration fee plus costs				
Purchaser has checked and acknowledged accuracy of colour and selections before signing.				
SITE:	INNISFIL	LOT: 120		
PURCHASER(S):	ZANCOR HOMES INVENTORY HOME		Purchaser Signature Date	
HOME #/CELL #	905-738-7010		Purchaser Signature Date	
EMAIL:			Purchaser Signature Date	
DÉCOR NOTES			D décor Consultant Signature Date	
FOR TRADE USE				
Any upgrades in the colour chart must be accompanied with a PES.				
It is the responsibility of all Trades to inform the builder of any discrepancies on sketches, PES and/or colour charts PRIOR to installation.				
*** PAGE 2 OF 2 ***		Vendor Signature Date		



Basement
Elevation A



Partial Basement
Elevation B

LOT 120

GALLEY 36-05

LOT 120 16N15F1L

STANDARD CABINET HARDWARE

(New Image Kitchens)



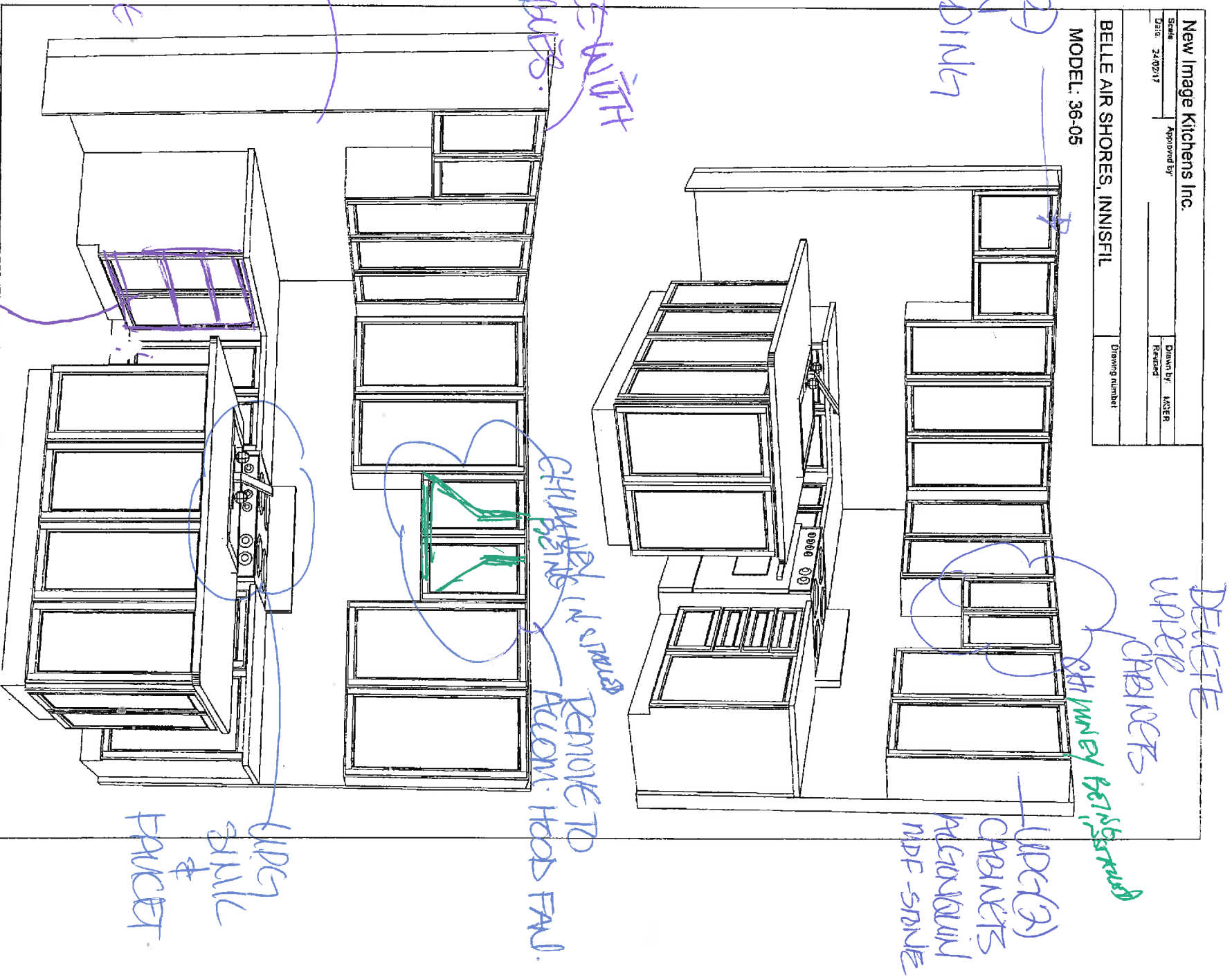
MISERABLE
+ MAIN BATH

KITCHEN/
ISLAND

LOT 120 - KUNISHL

New Image Kitchens Inc.	
Scale	Approved by
Date: 24/02/17	Drawn by: ACER
	Reviewed:
BELLE AIR SHORES, INNISFIL	Drawn's number:

MODEL: 36-05



WEG(2) -
C2020
moulding

FDD
Deep
wells with
(2) shafts.

ADD -
MATER
UNE
FOR
PRIDGE

DELETE
UPPER
CHARACTERS

— (WPG 2)
CABINETS
ALGONQUIN
MDF - SPRITE

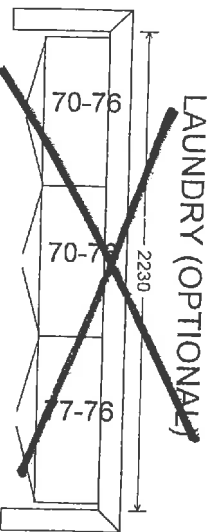
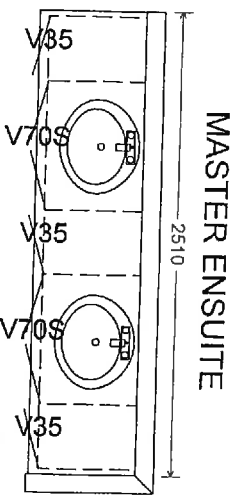
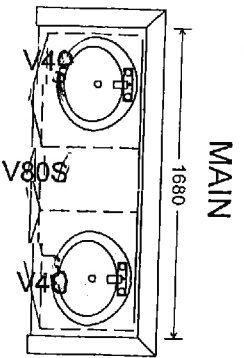
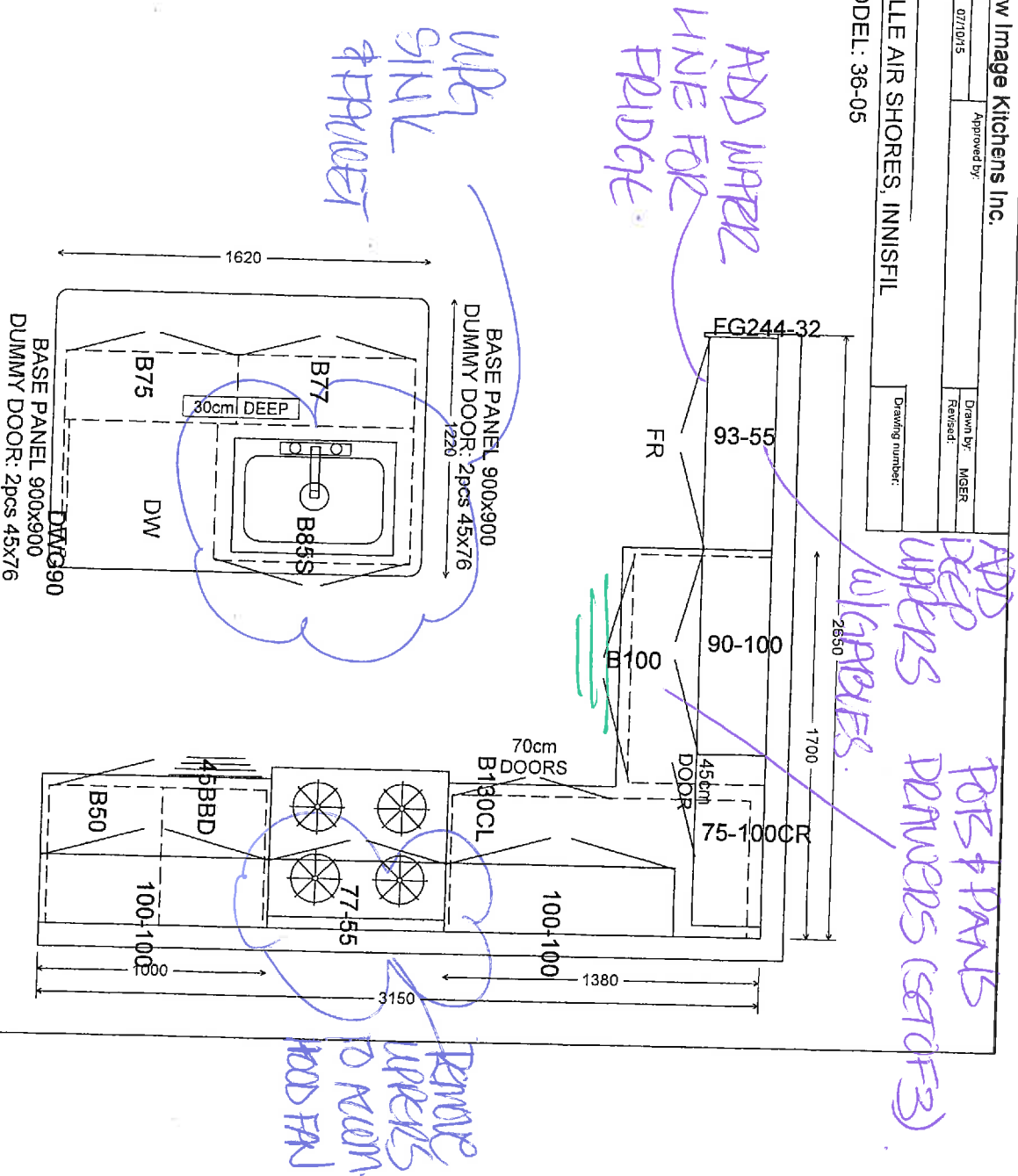
REMOVE TO
ACOM. HOOD FALL.

side
sail
p
pocket

ADD /
PETS & PANTS
DRAWINGS (SET OF 3).

LOT 120 - INNISFIL

New Image Kitchens Inc.			
Scale:	Approved by:	Drawn by:	MGER
Date: 07/10/15		Revised:	
BELLE AIR SHORES, INNISFIL		Drawing number:	
MODEL: 36-05			



BLANCO QUATRUS™ R15 Undermount

LOT 120
INSTALL
KITCHEN

BLANCO QUATRUS™ R15 U 1¾		Sink Specifications	Model N°	Optional Accessories
		Undermount Minimum Cabinet Size* 36" (915 mm) Bowl Depth 9" (230 mm) Cubed Weight 55 lb. (25 kg)	401520	406451 Grid (LB) 406450 Grid (SB) 406345 Ash Cutting Board 406344 Workstation 517666 CapFlow™ 230694 Magnetic Caddy

BLANCO QUATRUS™ R15 U 2		Sink Specifications	Model N°	Optional Accessories
		Undermount Minimum Cabinet Size* 36" (915 mm) Bowl Depth 9" (230 mm) Cubed Weight 55 lb. (25 kg)	401519	406454 Grid 106345 Ash Cutting Board 406344 Workstation 517666 CapFlow™ 230694 Magnetic Caddy

ITEM #12

BLANCO QUATRUS™ R15 U 1 SUPER SINGLE		Sink Specifications	Model N°	Optional Accessories
		Undermount Minimum Cabinet Size* 36" (915 mm) Bowl Depth 9" (230 mm) Cubed Weight 55 lb. (25 kg)	401518	406347 Super Single Grid 406346 Elevated Grid 406345 Ash Cutting Board 406344 Workstation 517666 CapFlow™ 230694 Magnetic Caddy

BLANCO QUATRUS™ R15 U 1 MEDIUM		Sink Specifications	Model N°	Optional Accessories
		Undermount Minimum Cabinet Size* 27" (685 mm) Bowl Depth 9" (230 mm) Cubed Weight 43 lb. (19.5 kg)	401517	406452 Grid 406345 Ash Cutting Board 406344 Workstation 517666 CapFlow™ 230694 Magnetic Caddy

* Depending on cabinet construction, a different cabinet size may be required. Consult the cabinet manufacturer. See page 160 for important installation information.

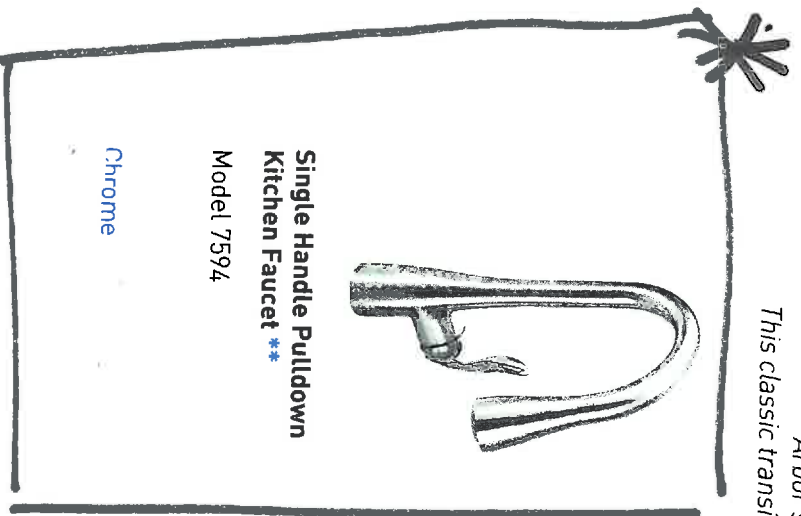
KITCHEN

LOT 120
14415112

Arbor®

Traditional | Transitional | Modern

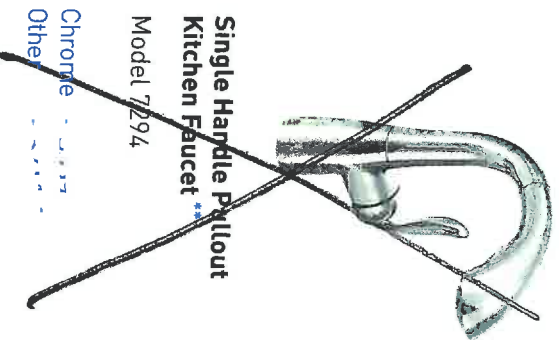
*Arbor's smooth profile is tailored to perfection.
This classic transitional look works with a variety of decorating styles.*



Single Handle Pulldown
Kitchen Faucet **

Model 7594

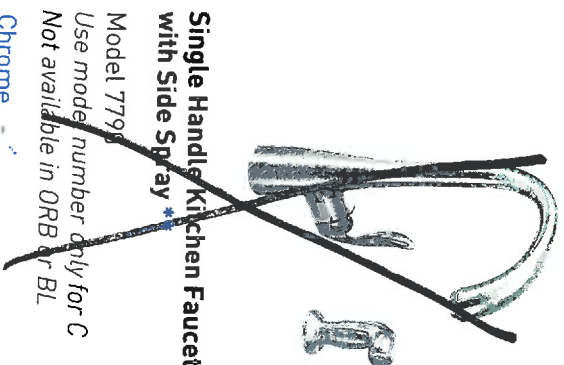
Chrome



Single Handle Pullout
Kitchen Faucet **

Model 7294

Chrome
Other

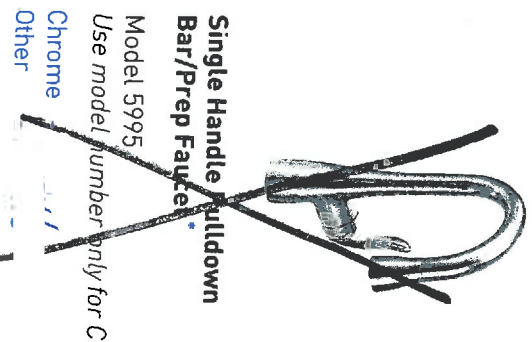


Single Handle Kitchen Faucet
with Side Spray *

Model 7795

Use model number only for C
Not available in ORB or BL

Chrome
Other



Single Handle Pulldown
Bar/Prep Faucet *

Model 5995

Use model number only for C

Chrome
Other

FINISH OPTIONS:



To order, combine the model number with one of these finish letter(s):
Chrome (C), Spot Resist™ Stainless (SRS), Oil Rubbed Bronze (ORB) &
Matte Black (BL).

* Deckplate sold separately – 141002 series
** Deckplate included

Bathroom Accessories for many
Standard Faucets

Mason™

ditional | Transitional | Modern



Paper Holder
Model YB8099 (Roller)
Model YB8000 (2 Posts)
Chrome



24" Towel Bar
Model YB8094 (Bar)
Model YB8000 (2 Posts)
Chrome

PER

Bathroom

- LOT 120
INUYEIL - 3
1. Powder Rm
 2. Master En suite
 3. Main Bath.

KitchenAid®

French Door w/Ice Dispenser Refrigerator

PRODUCT MODEL NUMBERS

KRFC704F KRFC604F

PRODUCT DIMENSIONS

Electrical: A 115-volt, 60 Hz, AC-only 15- or 20-amp fused, grounded electrical supply is required. It is recommended that a separate circuit serving only your refrigerator and approved accessories be provided. Use an outlet that cannot be turned off by a switch. Do not use an extension cord.

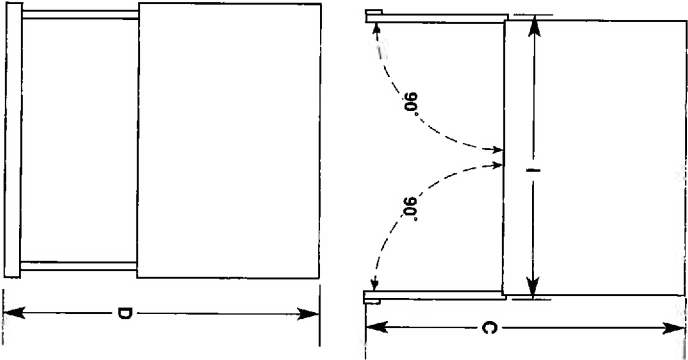
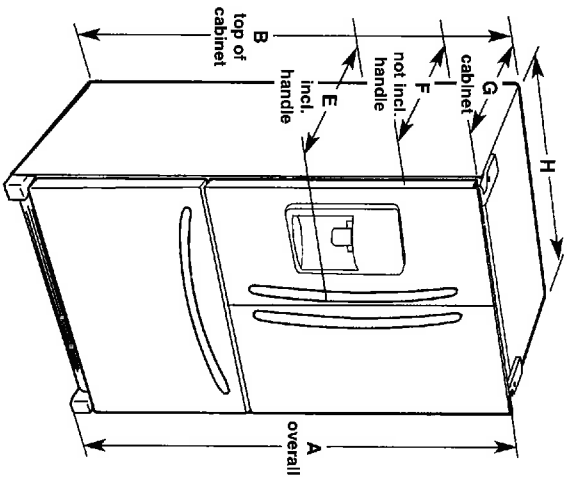
Water: A cold water supply with water pressure between 35 and 120 psi (241 and 827 kPa) is required to operate the water dispenser and ice maker. If you have questions about your water pressure, call a licensed, qualified plumber.

NOTE: If the water pressure is less than what is required, the flow of water from the water dispenser could decrease or ice cubes could be hollow or irregular shaped.

Reverse Osmosis Water Supply:

IMPORTANT: The pressure of the water supply coming out of a reverse osmosis system going to the water inlet valve of the refrigerator needs to be between 35 and 120 psi (241 and 827 kPa).

If a reverse osmosis water filtration system is connected to your cold water supply, the water pressure to the reverse osmosis system needs to be a minimum of 40 to 60 psi (276 to 414 kPa).



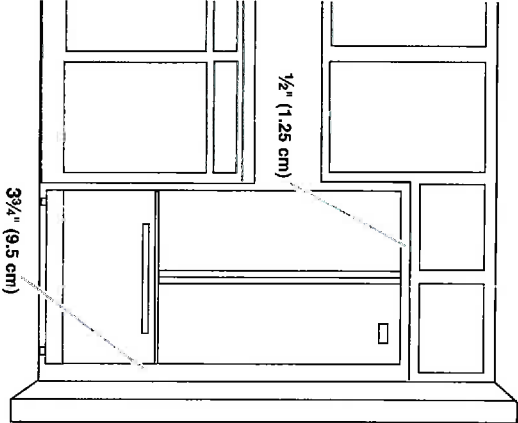
Model Size	Height - Overall "A"	Height - Top of Cabinet "B"	Depth - Door Open 90° "C"	Depth - Drawer Open "D"	Depth - With Handles "E"	Depth - Without Handles "F"	Depth - Cabinet Only "G"	Width - Cabinet "H"	Width - Door Open 90° "J"
23.8 cu. ft.	71 7/8" (182.6 cm)	70 7/8" (180.0 cm)	43 3/4" (111.1 cm)	45 7/8" (116.5 cm)	31 1/2" (80.0 cm)	28 7/8" (73.3 cm)	24 5/8" (61.9 cm)	35 5/8" (90.5 cm)	43 3/8" (110.8 cm)

LOCATION REQUIREMENTS

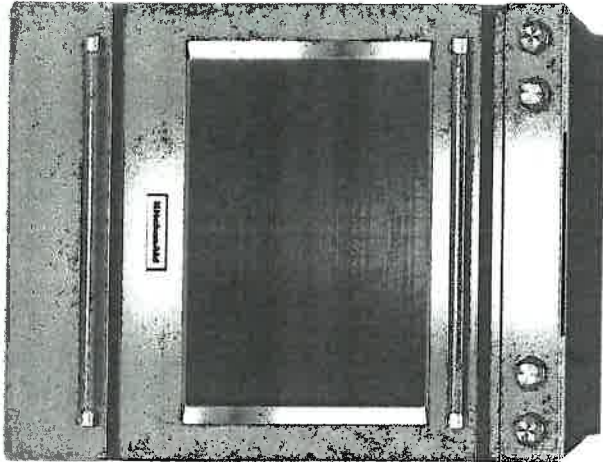
IMPORTANT: This refrigerator is designed for indoor, household use only.

To ensure proper ventilation for your refrigerator, allow for a 1/2" (1.25 cm) of space on each side and at the top. Allow for a 1" (2.54 cm) space behind the refrigerator. If your refrigerator has an ice maker, allow extra space at the back for the water line connections. When installing your refrigerator next to a fixed wall, leave a 3 3/4" (9.5 cm) minimum space between the refrigerator and wall to allow the door to swing open.

NOTE: This refrigerator is intended for use in a location where the temperature ranges from a minimum of 55°F (13°C) to a maximum of 110°F (43°C). The preferred room temperature range for optimum performance, which reduces electricity usage and provides superior cooling, is between 60°F (15°C) and 90°F (32°C). It is recommended that you do not install the refrigerator near a heat source, such as an oven or radiator.



KitchenAid®



NEW

KitchenAid® 30-Inch 5-Element Electric Convection Front Control Range with Baking Drawer

2.5

26 Reviews Write a Review

This versatile electric range provides a Baking Drawer that adds more options to the oven. The separate compartment allows you to bake at a different temperature. This range also features Even-Heat™ True Convection, helping you achieve flawless cooking results. The unique bow-tie design and convection fan ensure the entire oven is heated to, and stays at, the perfect temperature. It also has a Wireless Probe that allows you to read internal food temperatures even when you're away from the kitchen.

AVAILABLE COLOR OPTIONS

☐ Stainless Steel - VKSEB900ESS

FEATURES

Baking Drawer

Adds more cooking options to the oven. The separate compartment allows you to keep warm, slow cook or bake at a different temperature and keep dishes

Even-Heat™ True Convection

Produces flawless results. The unique bow-tie design and convection fan ensure the inside of the entire oven is heated to, and stays at, the perfect temperature.

Wireless Probe

Lets cooks walk away from the oven without walking away from control. Our probe can easily be set to specific temperatures, and alerts you when the desired temperature has been reached. The easy-to-read monitor lets you attend to the rest of the meal, or anything else.

Additional Features

Steam Rack

Offers the ability to provide additional moisture to the inside of the oven, enhancing cooking results.

7.1 cu ft total capacity

This electric freestanding range provides an extra-large cooking capacity in the oven for multiple dishes at once and gives you the flexibility of a separate temperature zone in the baking drawer.

5 cooking elements including a warm zone

Provides five independent cooking surfaces that allow you to do more on your range. It features a triple cooking zone of 6, 9 and 12 inches, one 10 inch zone and two 6 inch cooking zones, plus a dedicated warming zone.

EasyConvect™ Conversion System

Takes guesswork out of convection cooking by ensuring you can get exceptional results when experimenting with new or familiar recipes.

FIT Guarantee

Is our promise to flawlessly fit slide-in ranges designed for an existing cutout of 30" width, countertop depth of 24"-25", cabinet depth of 23"-24" and countertop height of 36".

Glass Touch Controls

Offer an intuitive, easy-to-use touch screen experience.

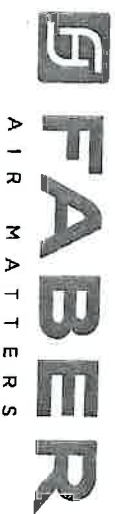
Slide Trim Accessory Kit

This optional accessory kit will cover damaged countertops and unfinished edges from an old slide-in range to make them beautiful again. Trim pieces come in black, white and stainless to seamlessly match your new range.

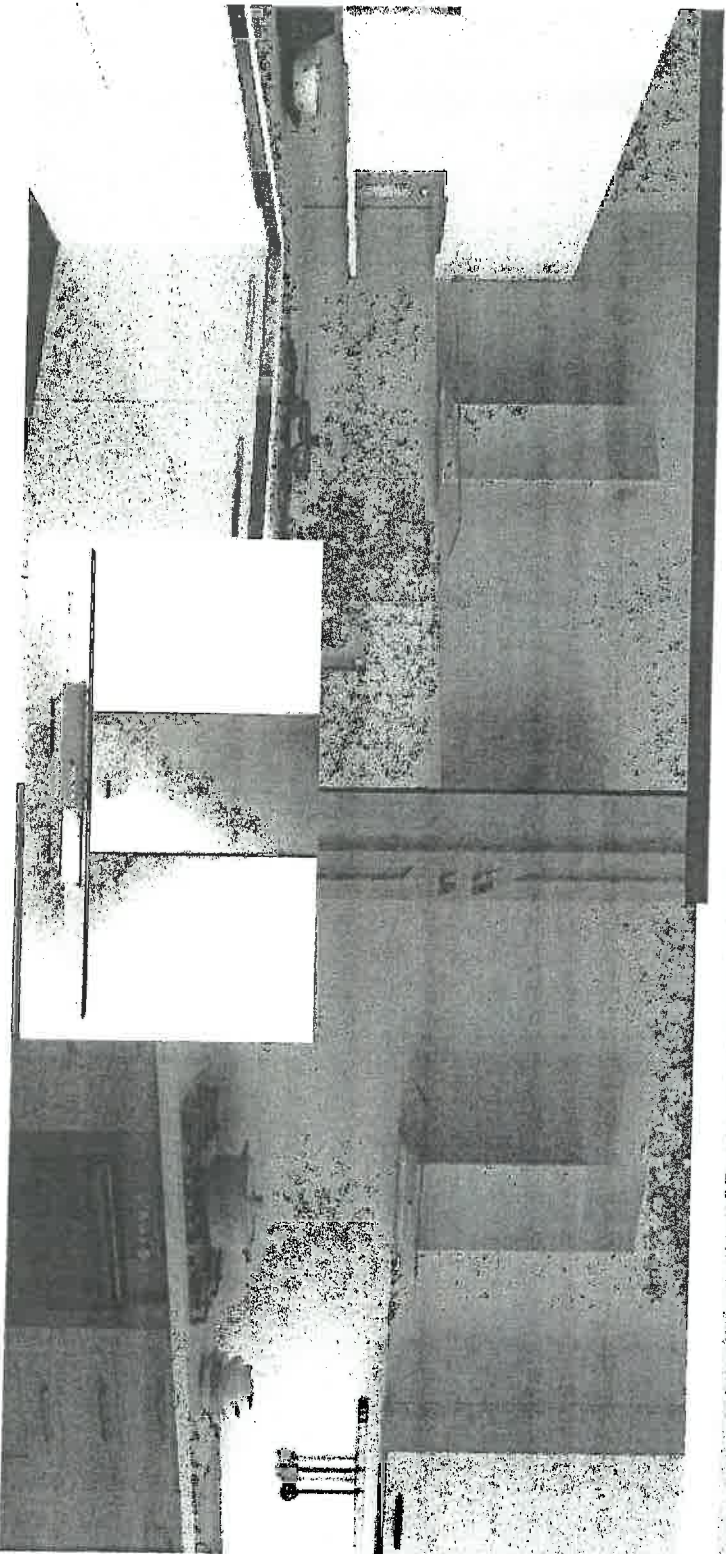
Aqualift®

Cleans your oven in less than an hour without odours and at a temperature below 200°F. This innovative system combines low heat with water to release baked-on spills.

GLASSY WALL RANGE HOOD



The new and improved Glassy by Faber features a stunning flat glass body with advanced electronic controls, an optional remote control and two level energy efficient LED lights. Available with a 600 or 300 cfm motor, the Glassy delivers your choice of performance level in a stylish and contemporary flat glass wall range hood.



AVAILABLE MODELS

Model #	Size / Color	Motor Class (CFM)	Sound Levels (sones)
GLAS30SS600-B	30" Stainless	600 CFM	2.8 - 7.5
GLAS36SS600-B	36" Stainless	600 CFM	2.8 - 7.5
GLAS30SS300-B	30" Stainless	300 CFM	2.5 - 5.0
GLAS36SS300-B	36" Stainless	300 CFM	2.5 - 5.0

KEY FEATURES

Backlit electronic controls

Backlit electronic controls with a White LED light to indicate the current speed and two level lighting



LED bulbs

Low consumption 1 watt LED bulbs with a dimmer light up your cooking but use very little energy



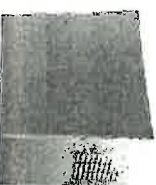
Remote Control (optional)

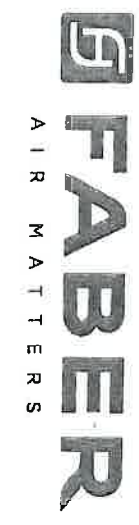
Control all features of the hood from the convenience of a wireless remote control (sold separately)



Ductless Chimney

An upper chimney with return air grates on the side is included. Just purchase the ductless kit to complete the ductless installation.





SPECIFICATIONS

min. / max ceiling height convertible to ductless / recirculating	8' 2" - 9' 3/16"
canopy depth / height	yes - kit sold separately 18 1/2" d / 11 1/16" h
high ceiling kit	yes - reaches up to 11' ceilings
controls	4 speed electronic w/ white led
lighting	2 x 1 (w) led - two level
ducting top	6" round
grease filters	dishwasher safe mesh
10 minute intensive speed	yes
15 minute auto shut-off	yes
ADA compliant	yes (with remote control purchase)
power cord included	yes
AC power	320 watts / 2.7 amps (600 cfm model)

PERFORMANCE (600 CFM Motor shown)

	SPEED	1	2	3	BOOST
CFM		150	350	450	560
Sones		2.8	4.3	6.0	7.5

ACCESSORIES

#FILTER2-

Charcoal Filter Kit

High quality charcoal filter for use when recirculating the air back into the kitchen. Filters out odor and should be replaced every 6 months

#HIGH3 -

High Ceiling Kit

High ceiling kit replaces the upper chimney with a taller chimney to reach up to 10' 9 10/16"

#DUCT4-

Ductless Conversion Kit

To convert the Glassy to ductless, this kit includes charcoal filters and a diverter to send the air thru the side grates on the upper chimney.

```
# REMCTRL -
```

Remote Control

Control all features of the hood from the convenience of a wireless remote control

WIREBOX -

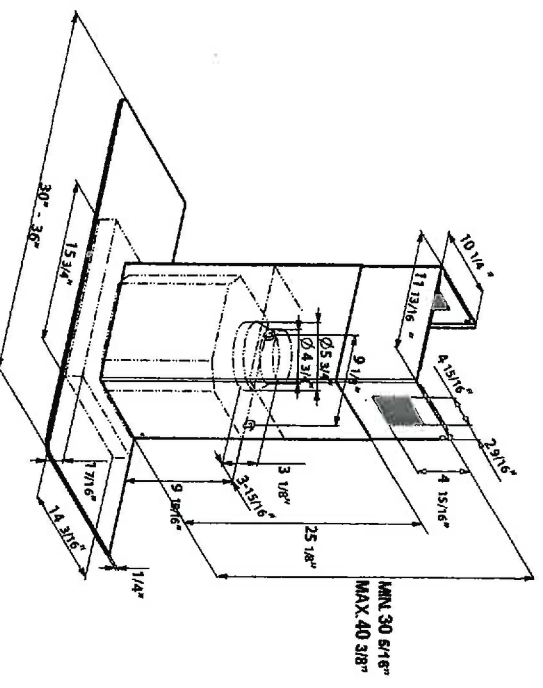
Fixed Wiring Box

Replace the power cord with a hard wired box to power the range hood

#MUDAMPER6 / MUDAMPER8 -

Universal Make-Up Air Damper

Satisfies make-up air requirements, this kit uses an air switch to activate the make-up air damper to open and bring fresh air into the home when the hood fan is on. It then closes tightly when the hood is off. The CFM level is not reduced with this accessory.



Rev: 6/16

2 Cabot Road Hudson, MA 01749 • TEL: (508) 358-5353 • E-Mail: info@faberonline.com www.faberonline.com



Imagined in Italy

WARNING: Product specifications are subject to change without notification. Consult the installation instructions before you begin installing this range hood



- Cooking Refrigerators Dishwashers Washers & Dryers Air Conditioners Outdoor Sinks & Faucets Home Essentials Packages Brands On Sale!

FREE DELIVERY NATIONWIDE | NO MINIMUMS *Exclusions apply.

Home > Dishwashers > Built In Dishwashers > WDF320PADS



Whirlpool AUTHORIZED DEALER

Whirlpool WDF320PADS

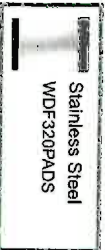
Full Console Dishwasher

- 3 Wash Cycles
- Vinyl Racks
- AccuSense Soil Sensor
- Triple Filtration System
- Silence Rating of 55 dB

★★★★☆ 4.4 Read (2729)

FREE Nationwide Delivery

Option: Stainless Steel



Replaced by

Whirlpool Dishwasher WDF330PAHS
Compare >>

View

Image Disclaimer

Additional Options
Add
Dishwasher Small Items Basket 3370993RB preview

Quick Specs

Product Information
Brand: Whirlpool
Model: WDF320PADS

Appearance
Type: Built In
Color: Stainless Steel
Accepts Panels: No

Dimensions
Width: 23 7/8 Inch
Depth: 24 1/2 Inch
Height: 34 1/2 Inch

Features
Control Type: Digital
Electronic Display: No
Control Style: Full Console
Child Lock: No
Adjustable Upper Rack: No
Fold-Down Tines: No

Description

Energy Info

Specifications

Features

Info & Guides

Reviews

Specifications

Configuration and Overview

Tub Material: Plastic

Rack Material: Vinyl

Number of Racks: 2

Upper Adjustable Rack: No

Water Filtration System: Removable Filter

Control Type: Electronic

Electrical Requirements: 15 Amps, 120 Volts

Cycle and Options

Number of Wash Cycles: 3

You Also Need:
Dishwasher Installation Kit with Power Cord + \$31.99

Discontinued
No Longer Available

Rack Material: Vinyl
Cutlery Tray : No
Stainless Steel Interior: No
Number of Spray Arms: 2
Water Filtration: Yes

Style and Extras

Wash Features
Cycles: 3
Delay Start: Yes
High Temperature Wash: Yes
Quick Wash Setting: Yes
China/Crystal Setting: No
Sensor Clean: Yes
Heavy Duty Wash: Yes

Dimensions

Technical Details
Star-K Certified: No
Energy Star Rated: No
ADA Compliant: No
Approved for Outdoor Use: No
Amps: 15
Voltage: 120 Volts
GTIN
UPC: 883049340784

Cycle Selections: 1-Hour Wash; Heavy; Normal

Option Selections: 4 Hour Delay; Hi Temp Wash; Heated Dry; Control Lock

Delay Wash: Yes

Tub Material: Plastic

Rack Material: Vinyl

Upper Rack Extras: 1-5" Cup Shelf

Silverware Basket Type: Full Length Non Splittable

Decibel Level: 55

Maximum Height: 34 1/2"

Minimum Height: 33 1/2"

Depth With Door Open 90°: 49 1/2"

ARE YOU A BUILDER?

Contact us for special pricing & volume discounts

Get Quote

Shop By Category



Cooking Appliances

Cooking Ranges, Microwave Ovens, Cooktops, Wall Ovens, Range Hoods, Coffee Systems, Compact Kitchens, Cooking Product Accessories



Refrigerators

Refrigerators, Freezers, Wine Coolers, Beverage Centers, Humidors, Beer Coolers & Kegators, Ice Makers, Refrigeration Accessories



Dishwashers & Disposal

Built In Dishwashers, Portable Dishwashers, Dishwasher Accessories, Disposers, Trash Compactors, Food Disposal Accessories



Popular

Dacor Modernist, Black Stainless Steel Appliances



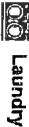
AccuCold
Acme
AGA
Alfresco
Amana
American Outdoor Grill
American Range



Blue Rhino
BlueStar
Bone Crusher
Bosch
Braun
Breville
Britzo



Dacor
Danby
Danze
DCS
De'Longhi
Dyson
Electrolux



Laundry

Washer & Dryer Sets, Washers, Dryers, Washer Dryer Combos, Laundry Centers, Ironing, Laundry Accessories



Air Conditioners & Air Quality

Room Air Conditioners, Mini Split Air Conditioners, Portable Air Conditioners, Air Quality



Outdoor

Barbecue, Outdoor Refrigerators & Beverage Coolers, Outdoor Bars, Patio Heaters



Sinks & Faucets

Sinks, Faucets, Sink & Faucet Combinations, Vanities & Mirrors, Sink & Faucet Accessories