



CONSTRUCTION SUMMARY

PURCHASER **MODEL HOME** **Cookstown - Zancor Homes (Cookstown) Ltd.** TEL: RES.: 905-264-5565

LOT / PHASE	HOUSE TYPE	PRINT DATE
19 / 1	Beaumont (50-05) Elev B	29-Sep-17

Ref#	Quantity - Description	Approved	Notes
4631	FINISHED BASEMENT - SEE PLAN - INCLUDES: 1. GYM with GLASS WALL AND DOOR **Trimmed flat arch if possible 2. FURNACE ROOM - Drywall walls & ceiling, floor unfinished 3. BEDROOM - Closet w/frameless mirror bi-fold doors, EGRESS WINDOW 4. REC ROOM	13Sep17	
4632	FINISHED BASEMENT BATHROOM - 1. To be same length as furnace room 2. Shorten Vanity to accomodate open shelves 3. FRAMELESS GLASS SHOWER in lieu of tub 4. TOILET, UNDERMOUNT SINK 5. Floor and wall tiles	13Sep17	
4633	STAIRS - 1. REMOVE 2 base landing/stairs on main floor and install standard treads with square edge 2. OPEN TO BELOW OAK STAIRS FROM MAIN FLOOR TO FINISHED BASEMENT *Includes 2 hockey sticks and finished foyer **Railings where applicable	13Sep17	
4634	BASEMENT WET BAR - 1. UNDER COUNTER WINE/BAR FRIDGE 2. SINK & FAUCET ***To be finalized with kitchen company	13Sep17	
4635	BASEMENT WINDOWS - 1. ENLARGE ALL BASEMENT WINDOWS TO BE 30 X 24 2. ADD 2 WINDOWS AT REAR - 30 X 24 3. RIGHT SIDE WINDOW IN REC ROOM - SHIFT TO BE CENTRED WITH FIREPLACE BUMP OUT ***EGRESS REQUIRED AT BEDROOM	13Sep17	
4636	CEILINGS - 1. COFFERED in main hall 2. WAFLE in library 3. 18" RAISED COFFERED in upper hall at stairs	13Sep17	
4637	CEILINGS - 1. COFFERED ceiling in master ensuite where vanity is 2. COFFERED ceiling in master ensuite where tub area is **NOTE Drop ceiling to 8 feet above shower area only ***REVISED MASTER ENSUITE	13Sep17	
4638	LAUNDRY ROOM - 1. INSULATE ALL WALLS OF LAUNDRY ROOM ON SECOND FLOOR 2. CHANGE LOCATION OF LAUNDRY ROOM DOOR	13Sep17	
4639	MASTER ENSUITE - 1. OPENING from bedroom to bathroom to be 36 INCHES by extending the nib walls approx 1 foot from the closet side of openings	13Sep17	
4640	MASTER ENSUITE - INFINITY DRAIN	13Sep17	
4641	MASTER ENSUITE REVISED LAYOUT - SEE SKETCH Shift 2 large windows - approx 16 inches from corner Shift Toilet & tub (install on angle) Install Shower Seat - PLUMBING TO BE ABOVE SEAT Delete window at original toilet location	13Sep17	
4642	MASTER ENSUITE REVISED LAYOUT CONTINUED - SEE SKETCH Grey tinted glass floor to ceiling at shower approx 4'5" wide with side panels approx 1 foot wide **2'6" opening to drip area on either side of shower Half grey tinted glass at toilet area - SIZE TBD	13Sep17	
4667	FRAMELESS GLASS SHOWER in ensuite 2/3 & 4	13Sep17	



CONSTRUCTION SUMMARY

PURCHASER: **MODEL HOME** **Cookstown - Zancor Homes (Cookstown) Ltd.** TEL: RES.: 905-264-5565

LOT / PHASE	HOUSE TYPE	PRINT DATE
19 / 1	Beaumont (50-05) Elev B	29-Sep-17

Ref#	Quantity - Description	Approved	Notes
4668	PLUMBING - MASTER ENSUITE TUB - Maax Ariosa 6636 Model #106267 *COLOUR 019 THUNDER GREY TUB FAUCET - VOSS 4 PCE SHOWER - 4 JETS, 8.5" RAINHEAD & SLIDEBAR TOILET - CONTRAC KIERA SINKS - TOTO LT533 SINK FAUCETS - VOSS Widespread	13Sep17	
4669	PLUMBING - ADD SLIDE BAR to all standards and larger shower head in Ensuite 2/3, Ensuite 4, Basement bath	13Sep17	
4670	PLUMBING - ENSUITE 5 Moen Align Annex Shower Rail **with toe tester in lieu of standard	13Sep17	
4671	PLUMBING - MOEN BATHROOM ACCESSORIES 1. GENTA BH3808 paper holder, BH3824 24 inch towel bar in Ensuite 2/3, 4, 5 & basement bath 2. VOSS in paper holder, 24 inch towel bar master ensuite	13Sep17	
4672	ELECTRICAL - LED POTLIGHTS (4) foyer, delete std (4) in library, delete std (4) in hall at stairs, separate from standard (1) in furniture niche, sep switch (3) hall in front of dining room, delete std (2) powder HALL	13Sep17	
4673	ELECTRICAL - LED POTLIGHTS (6) dining room between two coffered ceilings on sep switch, std remains (10) great room, delete std (4) breakfast on sep switch, std remains (9) kitchen, delete std (1) powder room on same switch as wall sconces	13Sep17	
4674	ELECTRICAL - LED POTLIGHTS (6) Master ensuite on sep switch, std remains (4) bedroom 2 on sep switch, std remains (5) bedroom 3 on sep switch, std remains (4) bedroom 4 on sep switch, std remains (4) bedroom 5 on sep switch, std remains	13Sep17	
4675	ELECTRICAL - LED POTLIGHTS (9) upper hall, delete std (3) laundry, delete std (3) ensuite 5, same switch as standard (1) ensuite 5 SHOWER POT (2) ensuite 2/3 on same switch as standard - standard on wall above each sink (2) ensuite 2/3 water closet	13Sep17	
4676	ELECTRICAL - LED POTLIGHTS (3) ensuite 4 on same switch as standard (3) master ensuite in front of vanity on sep switch, move standard to wall above each sink (3) master tub area on sep switch, see location of std (6) master walk in closet	13Sep17	
4677	ELECTRICAL - LED POTLIGHTS (4) master ensuite drip areas (3) master SHOWER POTLIGHT on same switch as standard	13Sep17	
4678	ELECTRICAL - LED POTLIGHTS (4) basement foyer, delete std (8) gym, delete std (4) basement area in front of gym, delete std (7) basement hall, delete std (8), (6), (9), basement rec room, delete std (4) basement bath with std	13Sep17	



CONSTRUCTION SUMMARY

PURCHASER: **MODEL HOME** **Cookstown - Zancor Homes (Cookstown) Ltd.** TEL: RES.: 905-264-5565

LOT / PHASE	HOUSE TYPE	PRINT DATE
19 / 1	Beaumont (50-05) Elev B	29-Sep-17

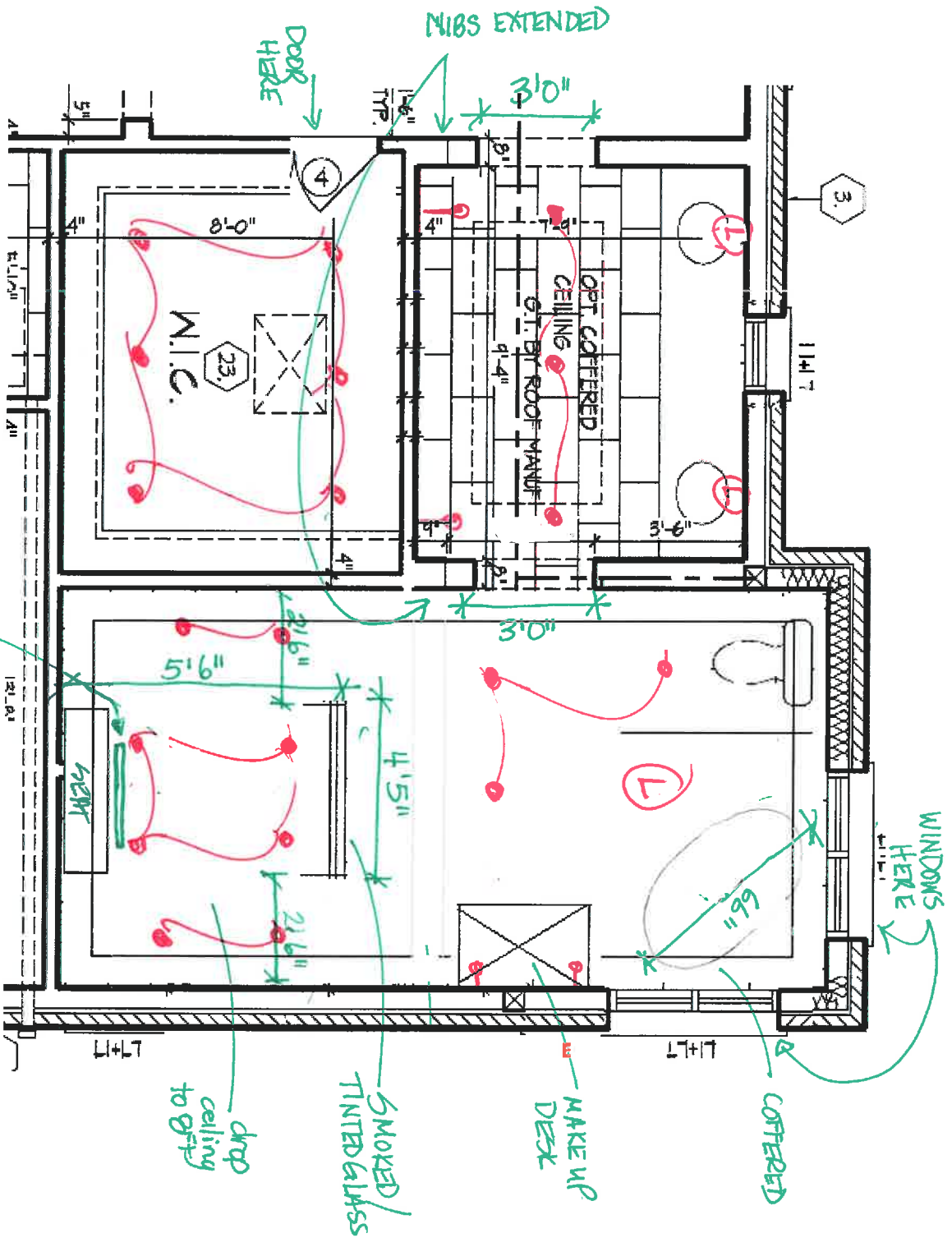
Ref#	Quantity - Description	Approved	Notes
4679	10 FOOT MAIN FLOOR CEILING HEIGHT - INCLUDES taller windows, 8 foot high interior doors 9 FOOT SECOND FLOOR CEILING HEIGHT - INCLUDES transoms above windows where applicable, 8 foot high interior doors	13Sep17	
4680	ELECTRICAL - WALL SCONCES approx 66 inches above FF (2) dining room 18" in each end, sep switch (2) library 18" in each end, sep switch (2) powder on either side of sink, same switch as pot (4) master ensuite 16 inches (2) master ensuite make up des	13Sep17	
4803	PLUMBING - UNDERMOUNT SINK TOTO L1641 ENSUITE 2/3 (x2) ENSUITE 4 ENSUITE 5 BASEMENT BATH	13Sep17	
4804	PLUMBING - POWDER ROOM TOILET - CONTRACT KIERA	13Sep17	
4805	KITCHEN WINDOWS - SHIFT 2 KITCHEN WINDOWS TO BE ON EITHER SIDE OF STOVE **KITCHEN DRAWING TO FINALIZE CENTRES	13Sep17	
4806	FRAMING - MASTER WALK IN CLOSET - 1. CLOSE OFF WALL FROM CLOSET TO VANITY AREA 2. RELOCATE SINGLE DOOR FROM BEDROOM TO WALK IN CLOSET **DOOR TO BE APPROX 24" AWAY FROM WALL TO ALLOW FOR FUTURE BUILT-INS	13Sep17	
4807	ELECTRICAL - RECTANGULAR STEP LIGHTS **EVERY OTHER STEP & 3 IN LANDING AREA	13Sep17	
4808	FIREPLACE IN LIBRARY **INCLUDES BUMP OUT FOUNDATION	13Sep17	
4809	FIREPLACE - LINEAR FIREPLACE GREAT ROOM **PRICE TO BE CONFIRMED	13Sep17	
4992	ELECTRICAL - EXTERIOR POTS (1) LEFT SIDE (1) RIGHT SIDE (2) 2ND FLOOR ABOVE PORTICO (EITHER SIDE OF WINDOW) (2) 2ND FLOOR ABOVE GARAGE (EITHER SIDE OF WINDOW) (2) CORNERS OF GARAGE	13Sep17	



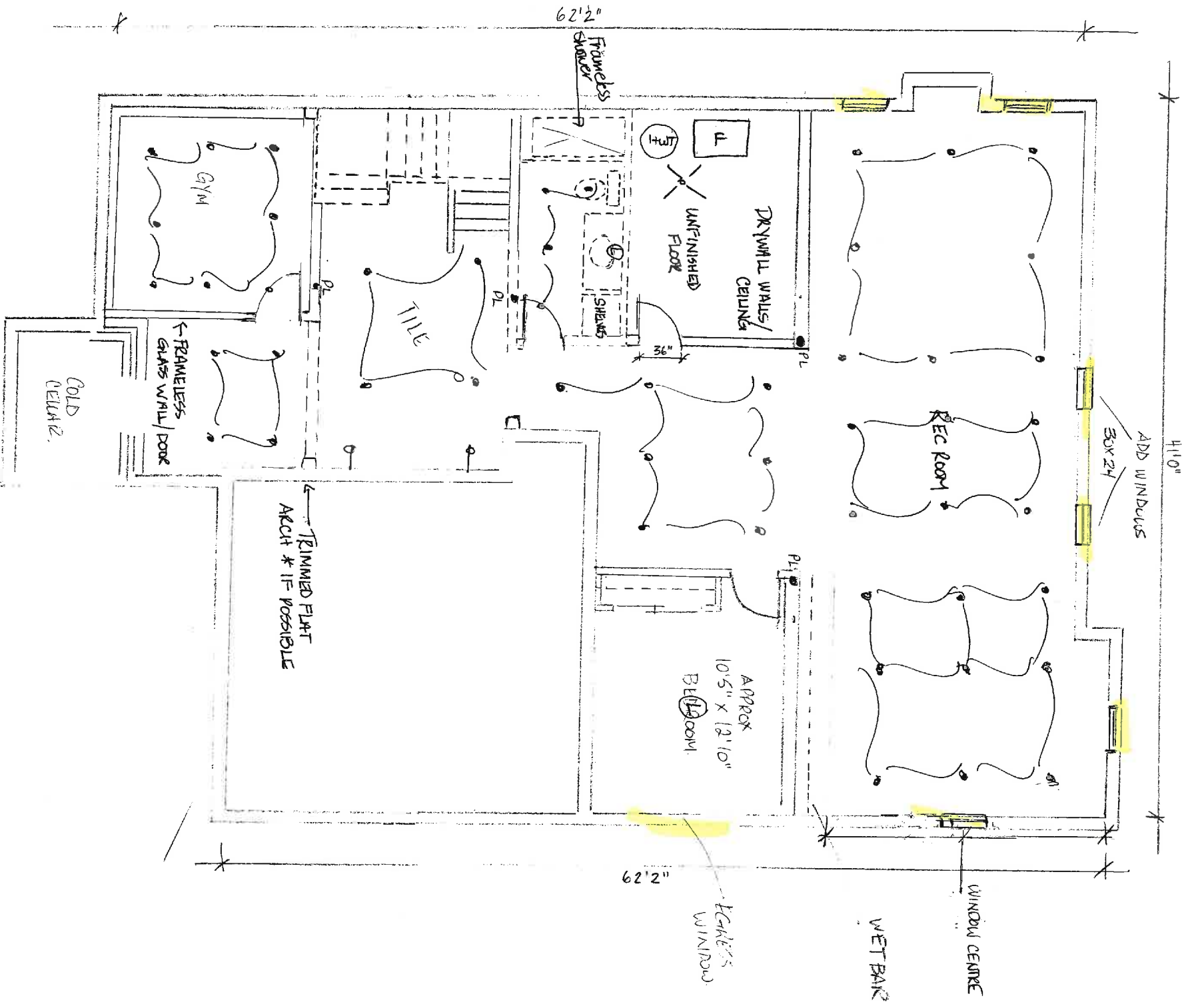
Lot 19 Cookstown

EXTERIOR LIGHTS (x8)

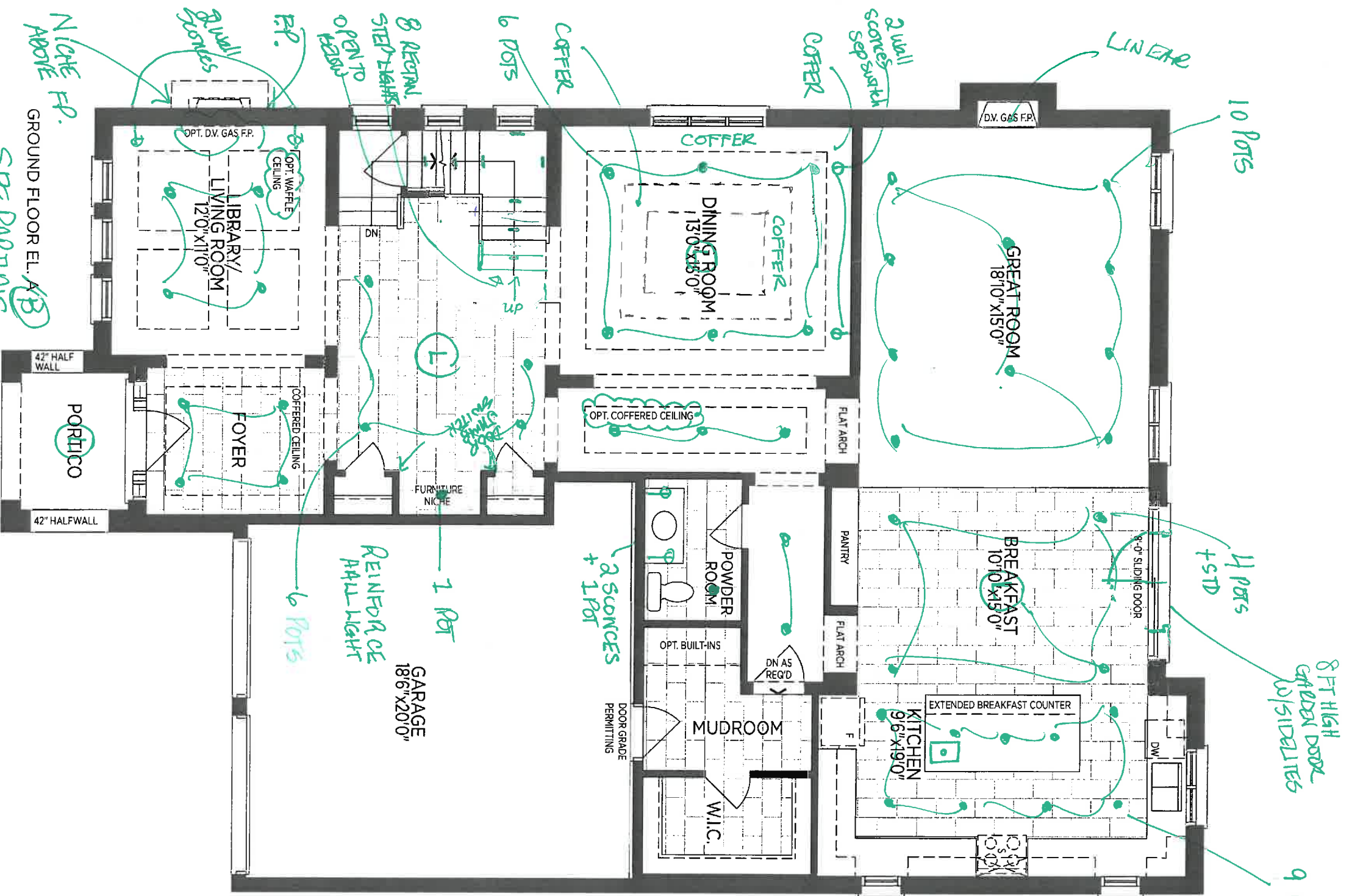
- (1) ONE @ SIDE WFT
- (2) 2ND FLOOR ABOVE BALCONY
- (2) 2ND FLOOR ABOVE GARAGE
- (2) COLUMNS OF GARAGE
- (1) 2ND FLOOR RIGHT SIDE



Lot 19 Lookstown
Master Ensuite
PENDING

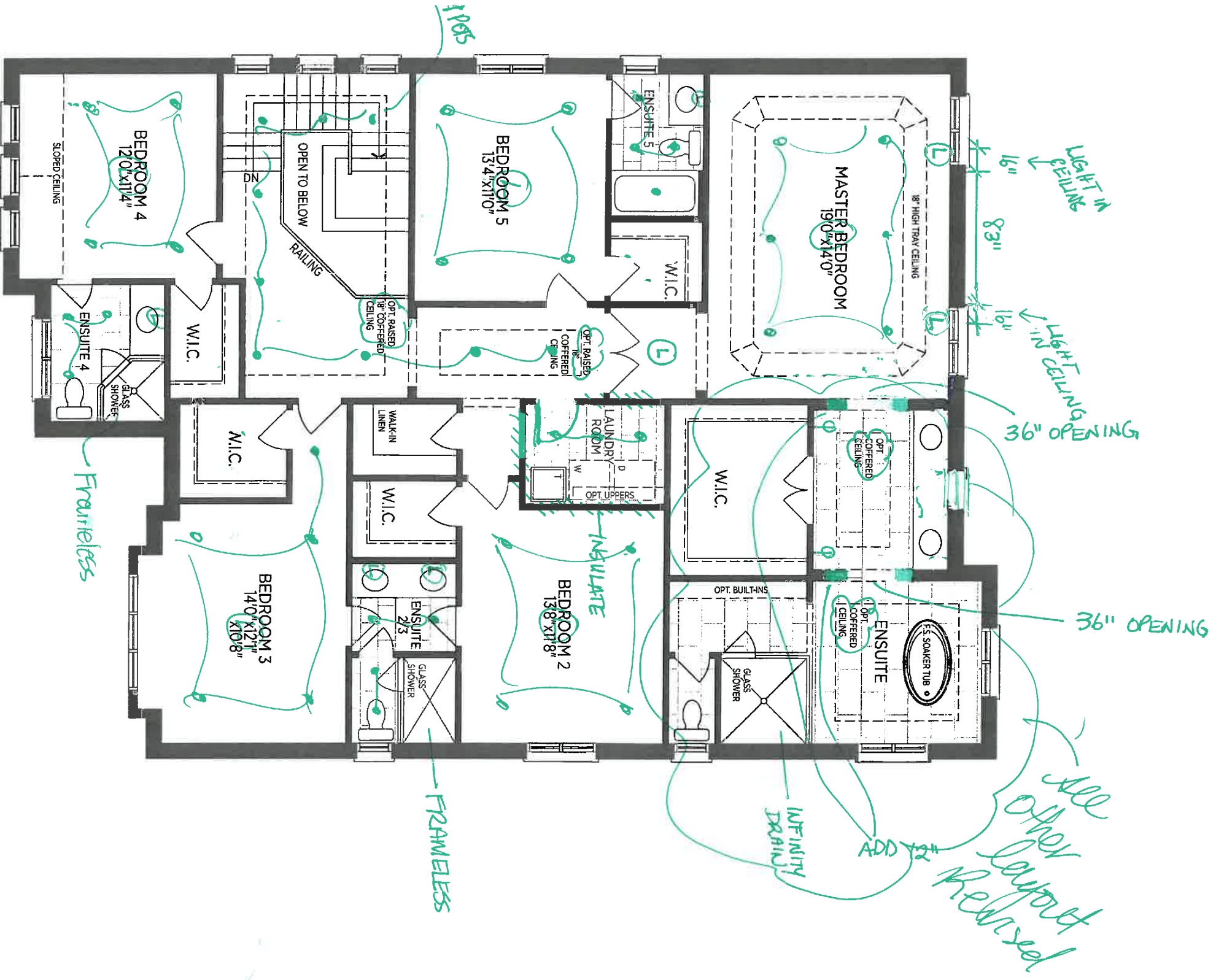


LOT 19
Beaumont
50-05



BEAUMONT 50-05

ⓑ LOT 19 COASTAL



OPT. SECOND FLOOR W/ 5 BEDROOM E.L. A (B)
SEE PARTIALS

BEAUMONT 50-05
LOT 19 (B)

TOTO®

LT533

Promenade® Undercounter Lavatory

FEATURES

- 18-1/2" x 14-1/2" Undercounter lavatory
- Front or rear overflow
- Mounting assembly complete with installation template and mounting screw set for wood countertops
- THU410 is required for marble/granite type counter top installation and must be purchased separately

MODELS

- LT533
(#01, #03, #11, #12, #51)

COLORS/FINISHES

- #01 Cotton
- #03 Bone
- #11 Colonial White
- #12 Sedona Beige
- #51 Ebony

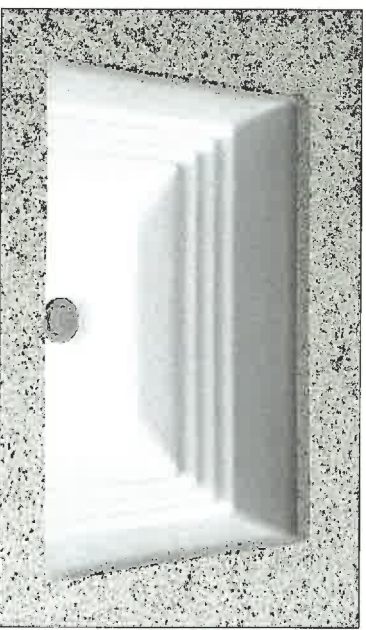
CODES/STANDARDS

- Meets and exceeds ASME A112.19.2/CSA B45.1
- Certifications: IAPMO(cUPC), State of Massachusetts, City of Los Angeles, and others
- Meets ADA guidelines and ANSI A117.1 requirements when countertop is installed 864mm (34") from finished floor and lavatory is installed 205mm (8-1/8") minimum from front edge.



PRODUCT SPECIFICATION

The undercounter lavatory shall be made of vitreous china. Lavatory shall be 18-1/2" in length and 14-1/2" in width. Product shall be with overflow and lavatory shall include mounting assembly. Lavatory shall be TOTO Model LT533_____.



Lot 19 Colston

Master Suite
(x2)

1 of 2

AUG 22 2017

LT533

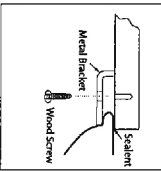
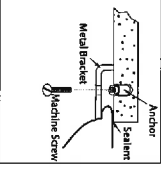
Promenade® Undercounter Lavatory

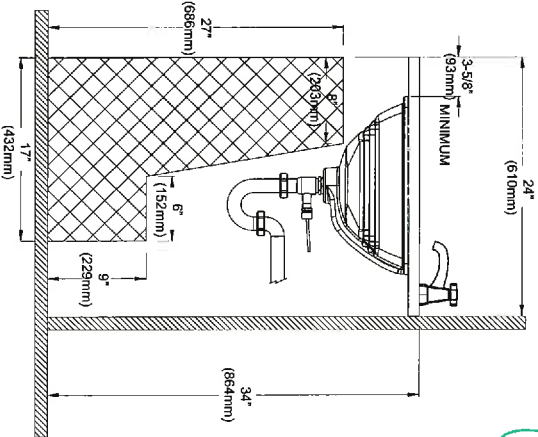
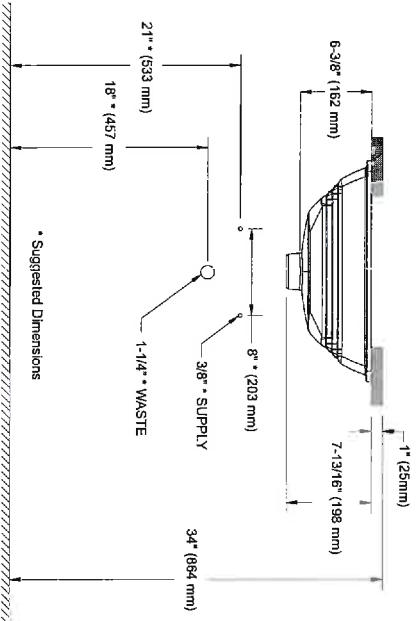
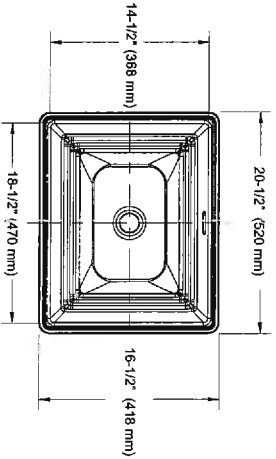
SPECIFICATIONS

- Waste 1-1/4" O.D.
- Size 20-1/2"W x 16-1/2"D
- Basin 18-1/2"W x 14-1/2"D
- Warranty One Year Limited Warranty
- Material Vitreous china
- Shipping Weight 25 lbs.
- Shipping Dimensions 22-1/4"W X 18-3/4"D X 9-3/4"H"

INSTALLATION NOTES

Mounting Hardware

Wood/Composite Wood/Etc.	Marble/Granite/Etc.
	
THU408 or THU409 (Included)	THU410 (Sold Separately)



ADA Compliance Check
Note: Overflow must be at rear

18419
lockstern.

Master
Ensure

282



TOTO®

LT641

Dartmouth® Undercounter Lavatory

FEATURES

- 18-3/4" x 13-3/4"
- ADA compliant
- Front or rear overflow
- Mounting assembly complete with installation template and mounting screw set for wood countertops
- THU410 is required for marble/granite type counter top installation and must be purchased separately

MODELS

- LT641
(#01, #03, #11, #12, #51)

COLORS/FINISHES

- #01 Cotton
- #03 Bone
- #11 Colonial White
- #12 Sedona Beige
- #51 Ebony

CODES/STANDARDS

- Meets and exceeds ASME A112.19.2/CSA B45.1
- Certifications: IAPMO(cUPC), State of Massachusetts, City of Los Angeles, and others
- Meets ADA guidelines and ANSI A117.1 requirements when countertop is installed 864mm (34") from finished floor and lavatory is installed 205mm (8-1/8") minimum from front edge.



PRODUCT SPECIFICATION

The undercounter lavatory shall be made of vitreous china. Lavatory shall be 18-3/4" in length and 13-3/4" in width. Product shall be with overflow and lavatory shall include mounting assembly. Lavatory shall be TOTO Model LT641 ____.



LOT 19 Cookstown

Ensuite 2/3 (x2)

Ensuite 4

Ensuite 5

Basement

1 of 2

AUG 22 2017

LT641

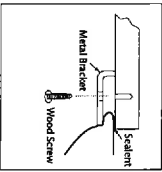
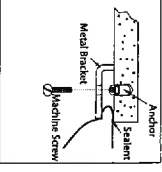
Dartmouth® Undercounter Lavatory

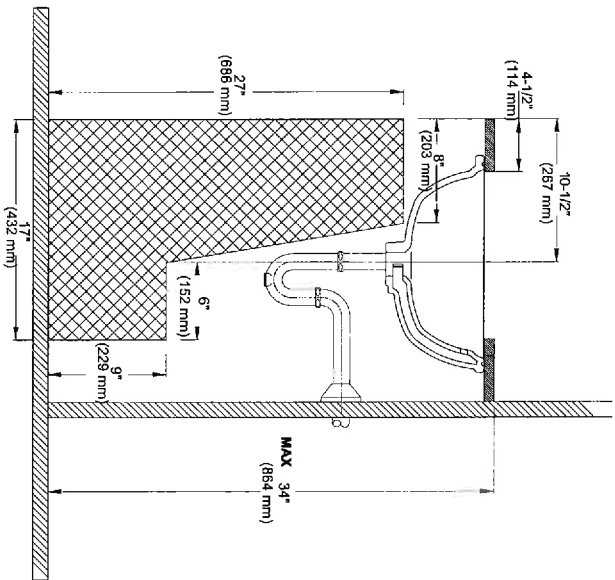
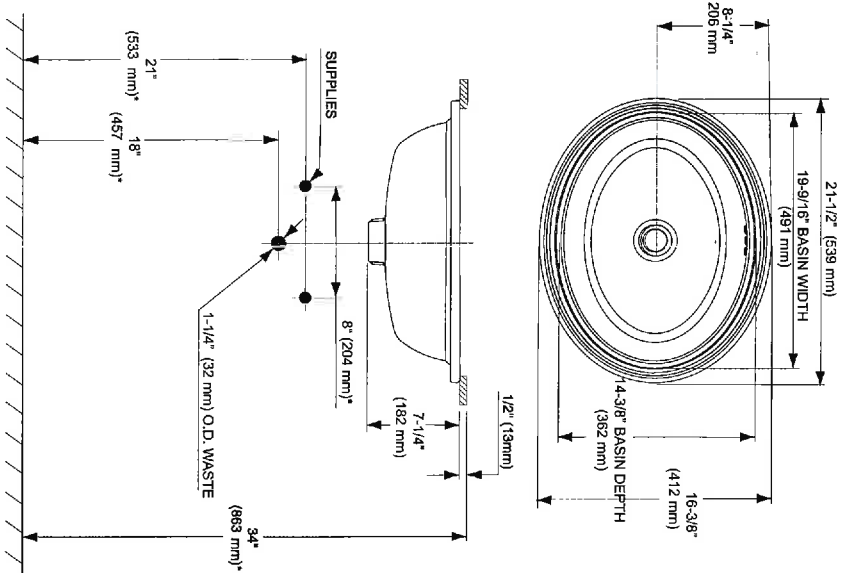
SPECIFICATIONS

- Waste 1-1/4" O.D.
- Size 21-1/4"W x 16-1/4"D
- Basin 18-3/4"W x 13-3/4"D
- Warranty One Year Limited Warranty
- Material Vitreous china
- Shipping Weight 21 lbs.
- Shipping Dimensions 22-1/4"W x 18-3/4"D x 9-3/4"H

INSTALLATION NOTES

Mounting Hardware

Wood/Composite Wood/Etc.	Marble/Granite/Etc.
 Metal Bracket Sealant Wood Screw	 Metal Bracket Sealant Anchor Machine Screw
THU408 or THU409 (Included)	THU410 (Sold Separately)



ADA Compliance Check

LT 19 Cast Iron
Ensure 2/3 (x2)
Ensure 4
Ensure 5
Ensure 6
Ensure 7
Ensure 8
Ensure 9
Ensure 10
Ensure 11
Ensure 12
Ensure 13
Ensure 14
Ensure 15
Ensure 16
Ensure 17
Ensure 18
Ensure 19
Ensure 20
Ensure 21
Ensure 22
Ensure 23
Ensure 24
Ensure 25
Ensure 26
Ensure 27
Ensure 28
Ensure 29
Ensure 30
Ensure 31
Ensure 32
Ensure 33
Ensure 34
Ensure 35
Ensure 36
Ensure 37
Ensure 38
Ensure 39
Ensure 40
Ensure 41
Ensure 42
Ensure 43
Ensure 44
Ensure 45
Ensure 46
Ensure 47
Ensure 48
Ensure 49
Ensure 50
Ensure 51
Ensure 52
Ensure 53
Ensure 54
Ensure 55
Ensure 56
Ensure 57
Ensure 58
Ensure 59
Ensure 60
Ensure 61
Ensure 62
Ensure 63
Ensure 64
Ensure 65
Ensure 66
Ensure 67
Ensure 68
Ensure 69
Ensure 70
Ensure 71
Ensure 72
Ensure 73
Ensure 74
Ensure 75
Ensure 76
Ensure 77
Ensure 78
Ensure 79
Ensure 80
Ensure 81
Ensure 82
Ensure 83
Ensure 84
Ensure 85
Ensure 86
Ensure 87
Ensure 88
Ensure 89
Ensure 90
Ensure 91
Ensure 92
Ensure 93
Ensure 94
Ensure 95
Ensure 96
Ensure 97
Ensure 98
Ensure 99
Ensure 100

TOTO®

Ph: (888) 295-8134 | Fax: (800) 699-4889 | www.totousa.com | © TOTO USA

These dimensions and specifications are subject to change without notice

282

AUG 22 2017

#SS-00400 v04

KIERA

4.8Lpf / 1.28Gpf or 3Lpf / 0.8Gpf 1PC DUAL FLUSH 167/8" HIGH ELONGATED

- ☐ 4710BNW Lined Tank
- ☐ 4710BNWU Unlined Tank

Product Specs:

- High efficiency dual flush toilet
- 4.8Lpf / 1.28Gpf or 3.0Lpf / 0.8Gpf
- Elongated bowl with concealed skirted trapway
- Vitreous china
- 167/8" Bowl height
- White top Push Button
- 12" (305mm) Rough-in
- 2" Fully glazed ball pass trapway
- 3" Dual flush valve
- Siphon jet flush action
- Water surface (240mm x 170mm) 77/8" x 51/2"
- Smooth close toilet seat included

Overall Dimensions:

- 392mm (W) x 725mm (D) x 765mm (H)
- 151/2" (W) x 283/2" (D) x 303/8" (H)

Compliance Certifications:

Meets or exceeds the following:

- IAPMO cUPC
- US EPA WaterSense
- ASME A 12.19.2 / CSA B45.1-2013
- Map tested 1000g
- LEED Compliant

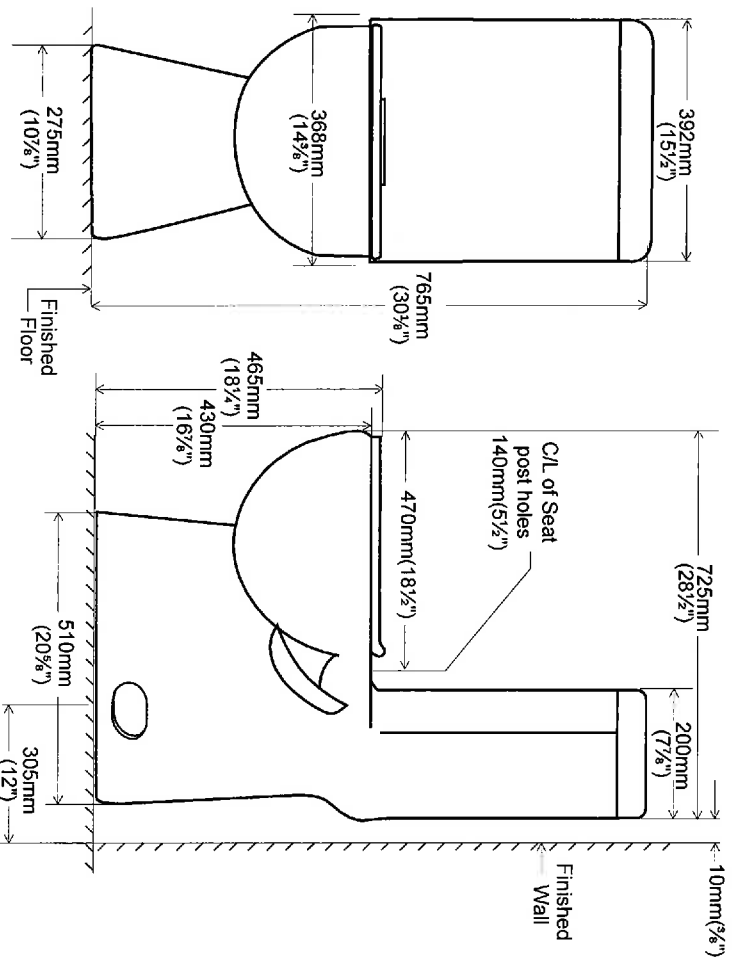
Shipping:

- Cube 9.39
- GW 92.50lbs



Notes:

This toilet is designed to rough-in at a minimum dimension of 305mm (12") from finished wall to C/L of outlet. Supply line not included with fixture and must be ordered separately.
Important: Dimensions of fixtures are nominal and may vary within the range of tolerances established by ASME standard A112.19.2. These measurements are subject to change or cancellation. No responsibility is assumed for use of superseded or voided pages.



LOT 19
CONSTANT
Master Ensuite
+ Powder

contrac®

CANADA | 5970 Chedworth Way, Unit A, Mississauga, ON, Canada L5R 3V5 | www.contrac.ca
USA | 6241 Northwind Parkway, Hobart, Indiana, USA 46342 | www.contrac.us

Revised: July 2016

\$820.

AUG 22 2017

MAAX SUBMITTAL SPECIFICATIONS

Ariosa 6636

MODEL NUMBER 106267

DIMENSIONS: 66" x 36" x 28" Acrylic



Master ENSUITE
*COLOUR 019
Thunder Grey

Project :

Contractor :

MAAX Representative :

Date :

Tel :

www.maax.com

Vivez l'expérience

MAAX®

Enjoy the experience

STANDARD FEATURES

- 2-piece bathtub with transitional symmetrical look and concealed seam
- Recessed deck with ample space for faucet installation
- Maximized bathing well with center drain
- Above-the-Floor Rough (AFR) and F² Drain compatible
- MAAX innovative leveling legs
- Apron available in white and 5 designer colors
- No systems available

OPTIONS

- Cable-operated waste and overflow
- Waste and overflow
- Waste and overflow
- Brass waste and overflow for high-rise construction
- Brass waste and overflow for high-rise construction
- Linear waste and overflow

UNIQUE FEATURES

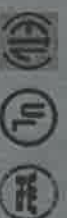
- Above-the-Floor Rough (AFR)
- 1 Tub - 2 Pieces
- Compatible with F2 Drain

SYSTEMS

- None

CERTIFICATIONS

Maax products adhere to one or more of the following certifications:



2017-08-22

LOT 19

COOKSTOWN

AUG 22 2017

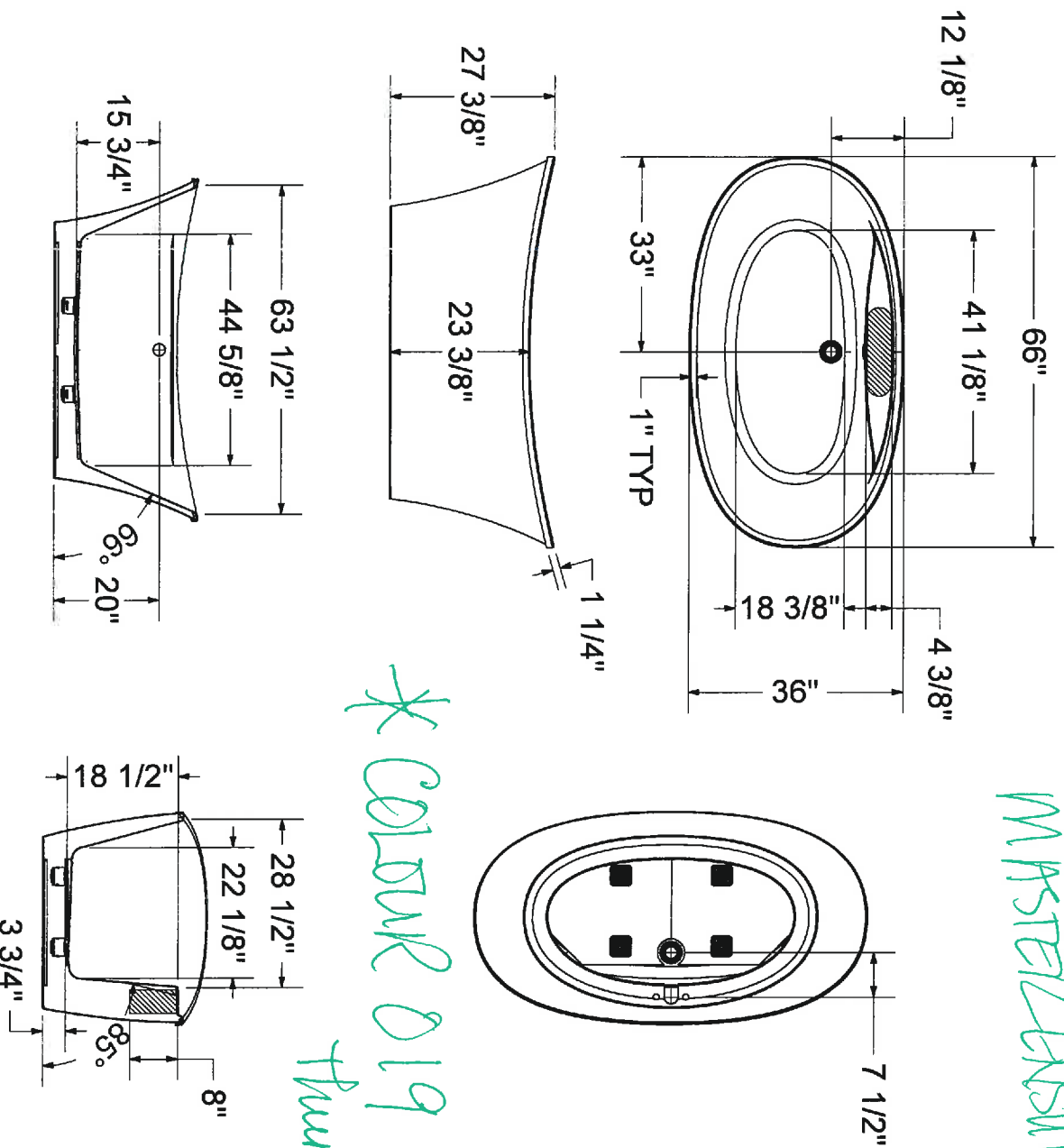
MAAX SUBMITTAL SPECIFICATIONS

Ariososa 6636

MODEL NUMBER 106267

Vivez l'expérience
MAAX
Enjoy the experience

TECHNICAL DRAWINGS



MAAX STEEL BRASS FINITE

* COLOUR D19

frustrer
every

(A) : Recommended faucet area of 15" (L) x 4" (W).
Depth recommended for straight pipes 8".
All dimensions are approximate. Structure measurements
must be verified against the unit to ensure proper fit.

LOT 19
COOKSTOWN

AUG 22 2017

2017-08-22

Lot 19 cookstown (MODEL HOME)



Master Ensuite

Model S3371 / S3600 (x3) / TS7115/
TS3100 (x3) / S3879EP / A721 / 116651/
164745 / S6345

X 1



x 1 Unit



x 5 Unit



Master Ensuite Voss

T6905/69000 x 1



Master Ensuite Voss

T694/9797 x 1

 **MOEN**
Buy it for looks. Buy it for life.™

LOT 19 COOKSTOWN (MODER HOME)



Bath 2/3 4 5 basement
Vichy 6710
Chrome
x 5 Units

512



Model: Annex (Ensuite 5)
TS3661NH/3839/T2661/62380/
173809
x 1 Units

\$1300 each.



x 5 Units



x 5 Units



*\$1400 each
Bath.*

Model: Shower Only
3669EP/A721/T4171/33
72/62380/T2661/S122/1
73809
x 4 Units

 **MOEN**
Buy it for looks. Buy it for life.*