



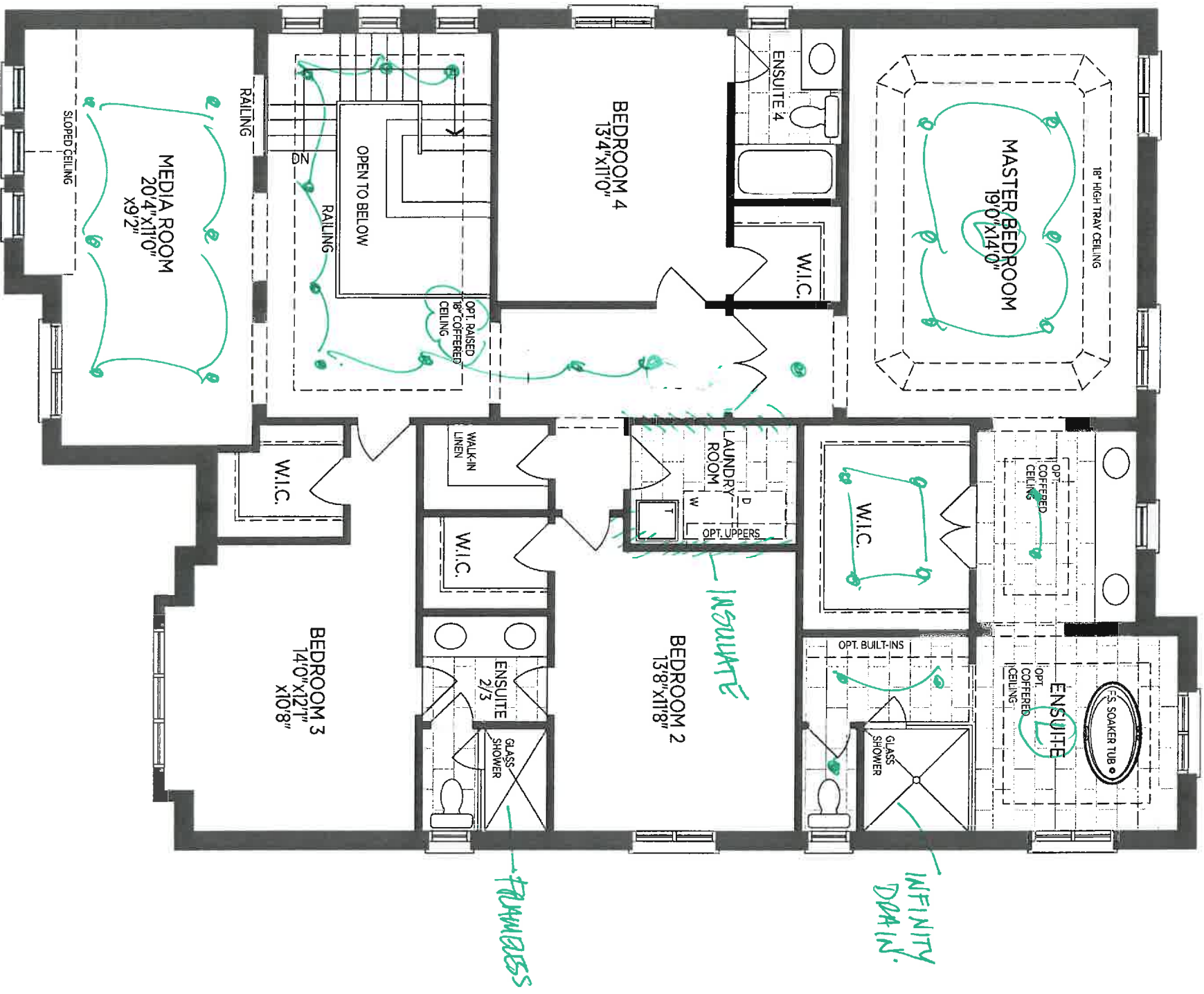
CONSTRUCTION SUMMARY

PURCHASER *Inventory*      Cookstown - Zancor Homes (Cookstown) Ltd.      TEL: RES.: 905-264-5565

LOT / PHASE	HOUSE TYPE	PRINT DATE
3 / 1	<i>Beaumont 50-05</i> <i>(A)</i>	25-Sep-17

Ref#	Quantity	Description	Approved	Notes
5064	10	FOOT MAIN FLOOR CEILING HEIGHT, *includes 8 foot interior doors,, 8 foot front, rear and garage man door, transoms above windows where possible	25Sep17	
5065	9	FOOT SECOND FLOOR CEILING HEIGHT, *includes 8 foot interior doors, windows will be increased approx 8 inches where possible	25Sep17	
5066	4.00	LARGER BASEMENT WINDOWS 30 X 24 (4)	25Sep17	
5067		SOUND INSULATION TO SECOND FLOOR LAUNDRY ROOM	25Sep17	
5068		FRAMELESS GLASS SHOWER IN LIEU OF STANDARD ENSUITE 2/3	25Sep17	
5069	24.00	ELECTRICAL - LED POTLIGHTS (6) GREAT ROOM, DELETE STD (4) DINING SEP SWITCH, STD REMAINS (6) KITCHEN ON SEP SWITCH, MOVE STD OVER ISLAND (4) BREAKFAST, SAME SWITCH AS STD (3) MAIN HALL, DELETE STD (1) FURNITURE NICHE, SEP SWITCH	25Sep17	
5070	15.00	ELECTRICAL - LED POTLIGHTS (4) FOYER, DELETE STD (4) LIBRARY, DELETE STD (2) POWDER ROOM HALL, DELETE STD (3) MUD ROOM, DELETE STD (2) WALK IN CLOSET, DELETE STD	25Sep17	
5071	16.00	ELECTRICAL - LED POTLIGHTS (6) MASTER BED SEP SWITCH, STD REMAINS (2) MASTER ENSUITE IN FRONT OF VANITY, SAME SWITCH AS STD (2) & (1) MASTER ENSUITE, SEP SWITCHES (4) MASTER WIC, DELETE STD (1) MASTER BED FOYER, DELETE STD	25Sep17	
5072		ELECTRICAL - LED POTLIGHTS (9) UPPER HALL, DELETE STD (6) MEDIA ROOM, DELETE STD	25Sep17	
5073		ELECTRICAL - CAPPED INTERIOR LIGHT ABOVE TUB IN MASTER ENSUITE ON SEP SWITCH	25Sep17	
5074		ELECTRICAL - CAPPED LIGHT OVER KITCHEN ISLAND TO BE ON SAME SWITCH AS STD CAPPED LIGHT	25Sep17	
5075		ELECTRICAL - DOOR JAMB LIGHT & SWITCH IN MAIN HALL CLOSET	25Sep17	
5076		WAFFLE CEILING IN LIBRARY	25Sep17	
5077		COFFER (18 INCH RAISED) IN UPPER HALL AT STAIRS	25Sep17	
5078		COFFER CEILING IN MASTER ENSUITE (X2)	25Sep17	
5079		FIREPLACE IN LIBRARY INCLUDING FOUNDATION BUMP OUT	25Sep17	
5080		PLUMBING - INFINITY DRAIN IN MASTER ENSUITE	25Sep17	



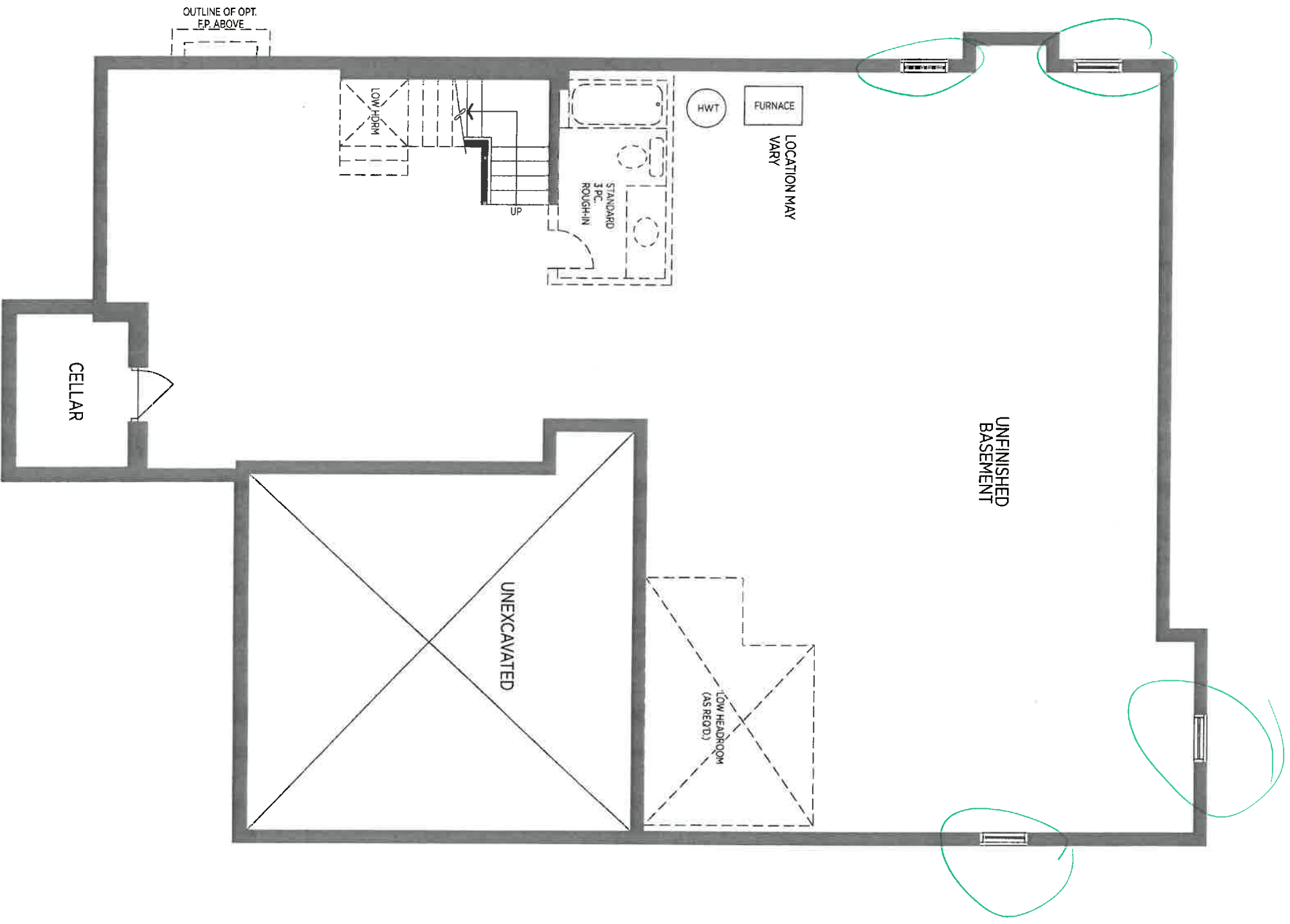


SECOND FLOOR EL. A

LOT 3

BEAUMONT 50-05

SEP 14 2017



BASEMENT E.L. A (E.L. B SIMILAR)

lot 3

BEAUMONT 50-05

SEP 14 2017