
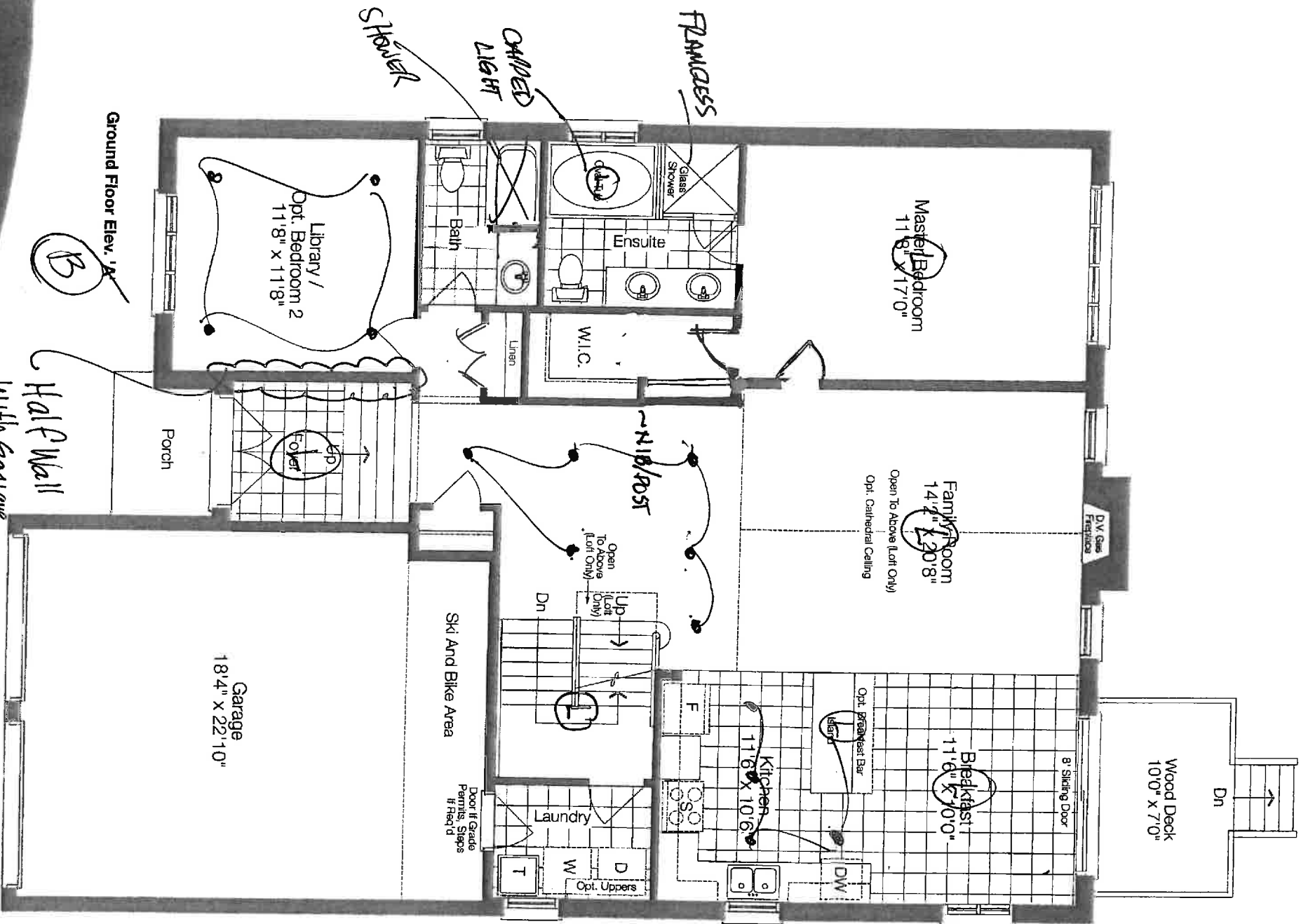


# WASAGA - PHASE 2

<b>Lot 92 - WASAGA PHASE 2</b> <b>Model &amp; Elevation: 50-03 MAYFLOWER ELEV B W OPT LOFT</b> <b>Purchasers Names : INVENTORY HOME</b>			
Item #		DATE	NOTE
1/	FAMILY ROOM - CATHEDRAL CEILING WITH FEATURE WINDOW **INCLUDES SMOOTH FINISH	10-May-17	STRUCTURALS
2/	HALF WALL WITH PLAIN SQUARE COLUMN BETWEEN LIBRARY AND FOYER IN LIEU OF FULL WALL **DELETE ENTRY DOOR AT LIBRARY	23-Jun-17	ADDITIONAL STR
3/	<b>ELECTRICAL - LED POTLIGHTS</b>	23-Jun-17	ADDITIONAL STR
4/	(4) LIBRARY ON EXISTING SWITCH, DELETE STD LIGHT	23-Jun-17	ADDITIONAL STR
5/	(6) MAIN HALL ON EXISTING SWITCH, DELETE STD LIGHT	23-Jun-17	ADDITIONAL STR
6/	(4) KITCHEN ON EISTING SWITCH WITH STANDARD LIGHT LOCATED OVER ISLAND	23-Jun-17	ADDITIONAL STR
7/	(4) IN LOFT HALL ON EXISTING SWITCH, DELETE STD	23-Jun-17	ADDITIONAL STR
8/	FRAMELESS GLASS SHOWER IN MASTER ENSUITE	23-Jun-17	ADDITIONAL STR
9/	ELECTRICAL - SHOWER POTLIGHT IN MASTER ENSUITE SHOWER IN LIEU OF STANDARD	23-Jun-17	ADDITIONAL STR
10/	8 FOOT DOORS ON MAIN FLOOR	23-Jun-17	ADDITIONAL STR
11/	RELOCATED MASTER BEDROOM DOOR AND ENLARGED WALK IN CLOSET **NIB WALL WITH SUPPORT POST TO REMAIN INSIDE CLOSET DUE TO OPTIONAL LOFT ABOVE	23-Jun-17	ADDITIONAL STR
12/	SMOOTH CEILINGS THROUGHOUT	23-Jun-17	ADDITIONAL STR
13/	DOUBLE DOOR LINEN CLOSET IN LIEU OF STANDARD	23-Jun-17	ADDITIONAL STR
14/	MAIN BATH - ENLARGE VANITY BY APPROX 1 FOOT AND COVERT TUB INTO SHOWER **INCLUDES 2 X 2 FLOOR AND SHOWER POTLIGHT	23-Jun-17	ADDITIONAL STR

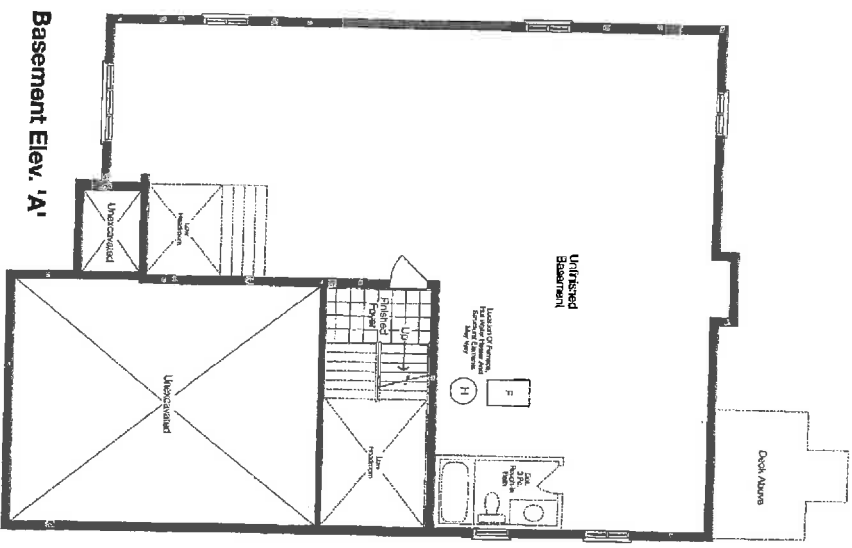
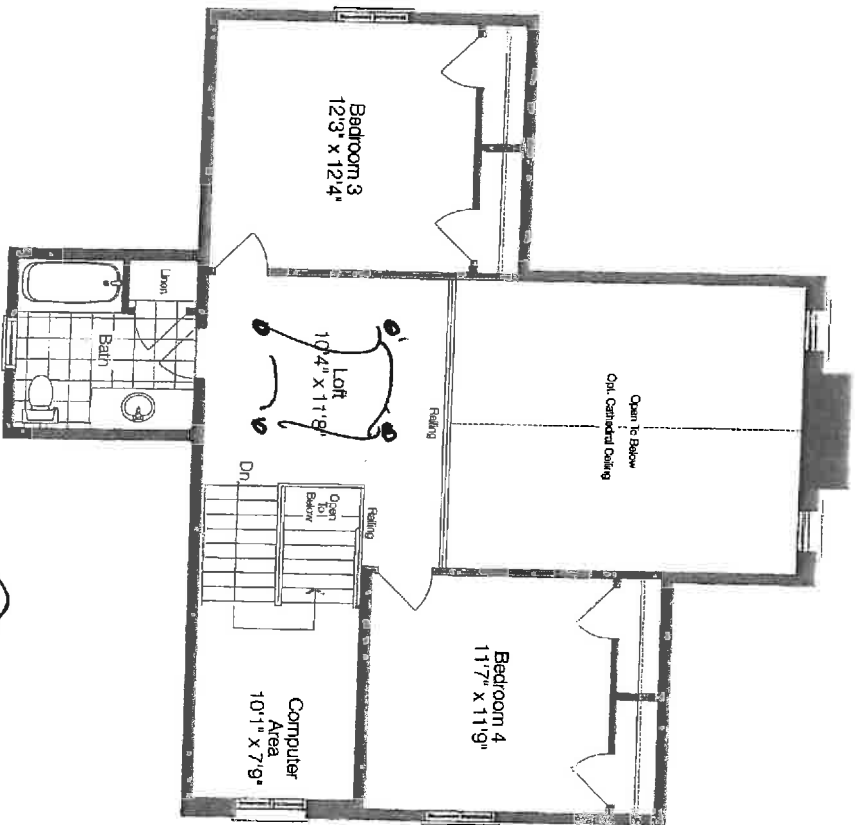
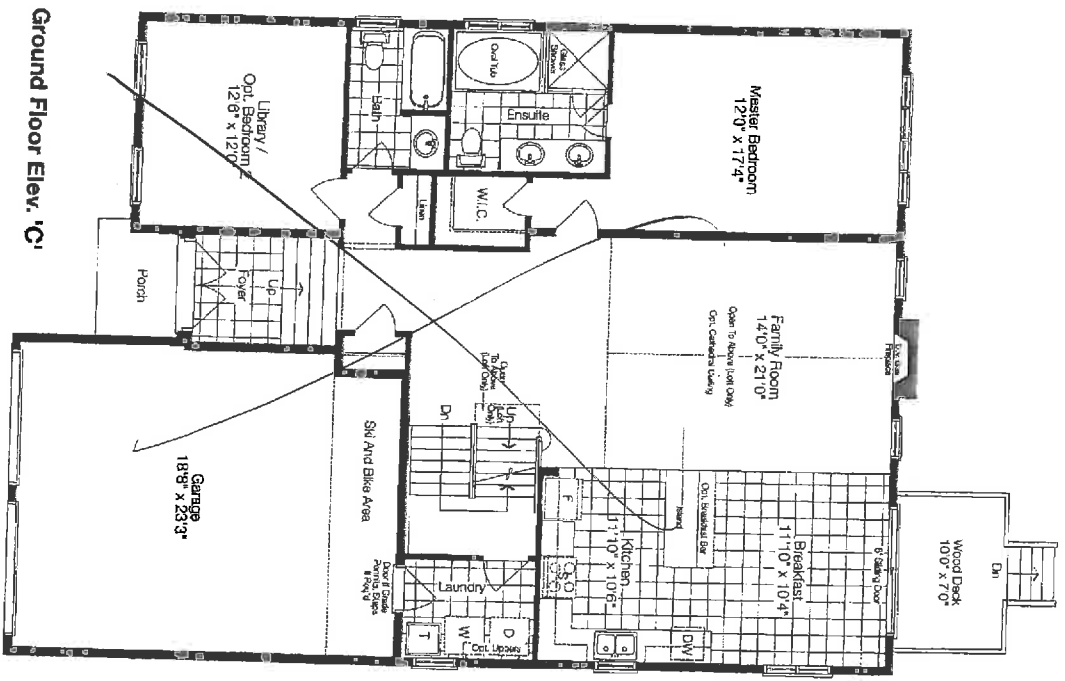
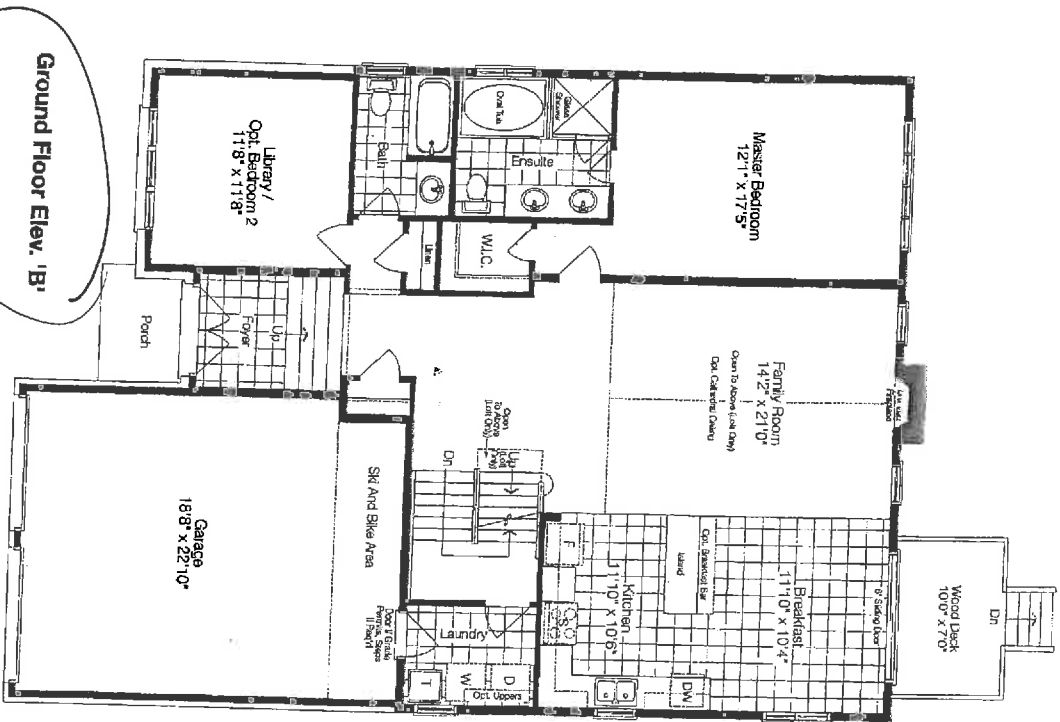


# The Mayflower

1580 sq. ft.

Includes 60 sq. ft. (n.) lower level  
Opt. Loft Plan 2015 sq. ft.

LOT 92



LOT 92

Optional Loft Plan Elev. 'A' & 'B'

Basement Elev. 'C'

Prices and specifications are subject to change without notice. E.&O.E. The patterns may vary. Window size and location may vary. Approx. location of furnace and water tank. Actual usable floor space may vary from the stated floor area. All stated dimensions are approximate. 'A' Elevation may include portions of the house constructed in vinyl siding or other materials. All renderings are artist's concept.