

LEGEND / PLANS

<p>● BUNKER ALARM</p> <p>● CARBON MONOXIDE</p> <p>④ WATERPROOF DUCKLUT OUTLET</p> <p>≡ VENTS AND RETAINS</p> <p>≡ SEWER IN</p> <p>③ EMBROIDER MAN</p> <p>✕ FLOOR DRAIN</p>	<p>D.J. DOORLOCK PORT</p> <p>P.T. PITCHFALL</p> <p>G.T. GRAVITY TRASHED LUMBER</p> <p>G.T. GROUND TRUCK</p> <p>A.F.F. AIRPORT FURNISHED</p> <p>⊗ BUILD BEARING</p> <p>⊗ DO NOT HAVE WRITE AN APPROVED INCREASE</p> <p>⊗ FORTY LOAD</p> <p>□ PLAY ACAC</p> <p>▬ 2 STORY WALL</p>
--	---

LEGEND / ELEVATIONS

<p>● COLD CELLAR VENT (O)</p> <p>⊗ STOVE VENT</p> <p>⊗ PRESS PLACE VENT</p> <p>⊗ RETURN VENT</p> <p>⊗ HYDRO METER</p> <p>⊗ GAS METER</p>	<p>⬆ EXT. ROOF PICTURE (WALL MOUNTED)</p> <p>US UNDER BEAM</p> <p>FG FUSED BEARING</p> <p>GB GLASS BLOCK</p> <p>SG BLACK GLASS</p>
--	--

[illegible]

This is to certify that these plans comply with the applicable Architectural Design Guidelines approved by the Township of KING.

JUL 16 2014
John G. Williams Limited, Architects

MODEL	STREETSCAPES
CLIENT	ZANCOR HOMES KING CITY KING CITY, ONTARIO

RN design

Imagine • Inspire • Create

TEL: (905) 738-5177

FAX: (905) 738-5540

DWG@RNDESIGN.COM

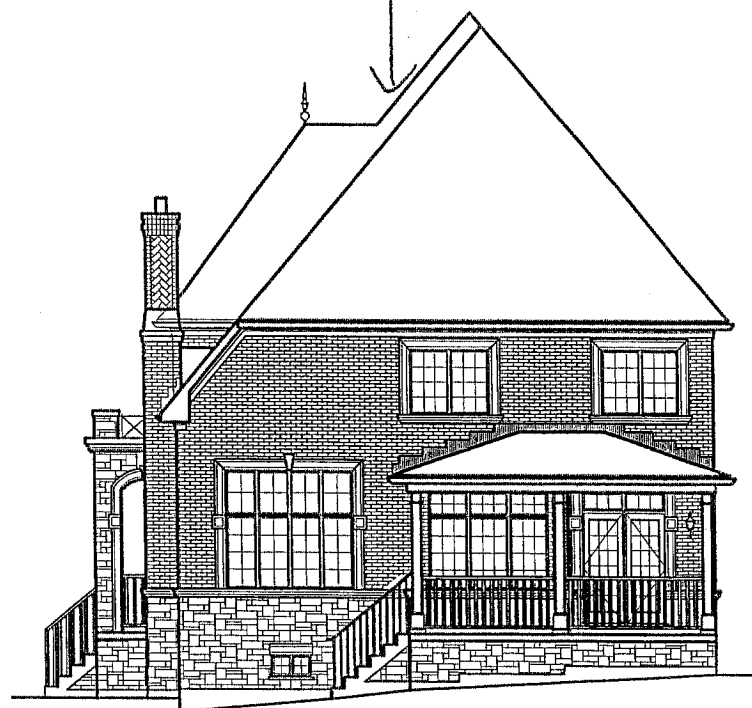
SCALE	N.T.S.
PROJECT NUMBER	09011
PAGE	SS



LOT 102(VALLEY POINT CRESCENT)	
MODEL: CRIOLLO, ELEV. 'C' 42-12 (STD.)	
COLOUR PACKAGE:	
PRELIMINARY:	
FINAL:	JULY 14, 2014
DROP GARAGE SOFFIT:	
OTHER:	

LOT 102 (VALLEY POINT CRESCENT)	
MODEL: GRIOLLO, ELEV. 'C'	
42-12 (STD.)	
COLOUR PACKAGE:	
PRELIMINARY:	
FINAL:	JULY 14, 2014
DROP GARAGE SOFFIT:	
OTHER:	

NOTES:
ALL STAIRS ACCESSING
FRONT ENTRY TO BE
POURED-IN-PLACE



LOT 102(VALLEY POINT CRESCENT)	
MODEL: CRIOLLO. ELEV. 'C'	
42-12 (STD.)	
COLOUR PACKAGE:	
PRELIMINARY:	
FINAL:	JULY 14, 2014
DROP GARAGE SOFFIT:	
OTHER:	

NOTE:
FOR ARCHITECTURAL SUBDIVISION
CONTROL PURPOSE ONLY