



CONSTRUCTION SUMMARY

Joshua Creek - 236-4 SHERWOOD (TH-01) A

Registere Plan Number: Municipal Address: Closing: **23-Aug-23**

ELECTRICAL

Inv.439 4	1 - FAMILY ROOM: INSTALL ELECTRICAL - ROUGH-IN FOR 15 AMP ABOVE FIREPLACE FOR FUTURE TV
Line 8850	Note:
2Aug22 / 4Aug22	

Inv.439 5	1 - ELECTRICAL - ROUGH-IN FOR AC UNIT. INCLUDES BREAKER & LOW VOLTAGE WIRE
Line 8851	Note:
2Aug22 / 4Aug22	

Inv.439 6	1 - KITCHEN: INSTALL RECEPTACLES - ADDITIONAL 15 AMP 120 VOLT RECEPTACLE, FOR GAS STOVE
Line 8852	Note:
2Aug22 / 4Aug22	

Inv.439 12	1 - GARAGE: INSTALL RECEPTACLES - EV STATION DEDICATED 240 VOLT RECEPTACLE
Line 8858	Note:
2Aug22 / 4Aug22	

Inv.439 13	1 - KITCHEN: INSTALL ELECTRICAL - ROUGH-IN FOR 15 AMP FOR FUTURE MICROWAVE ABOVE STOVE
Line 8859	Note:
2Aug22 / 4Aug22	

HVAC

Inv.439 7	1 - KITCHEN: INSTALL GAS PIPING AND OTHER - GAS LINE R/I FOR MAIN FLOOR - STOVE -
Line 8853	Note:
2Aug22 / 4Aug22	

Inv.439 1	1 - CAT 6A LOCATION SKETCH. LOCATIONS MAY VARY SLIGHTLY DUE TO JOIST LOCATIONS
Line 8844	Note:
2Aug22 / 4Aug22	

Inv.439 10	1 - FILTRATION - HUMIDIFICATION - CONTROL - FLO - THRU HUMIDIFIER LARGE HE205 - 18 GAL
Line 8856	Note:
2Aug22 / 4Aug22	

MISCELLANEOUS



CONSTRUCTION SUMMARY

Joshua Creek - 236-4 SHERWOOD (TH-01) A

Registere Plan Number: Municipal Address: Closing: **23-Aug-23**

Inv.439 14	1 - Purchaser has attended a Structural appointment at the Decor Centre & has DECLINED any additional upgrades and accepts and acknowledges that there will be no further structural changes/additions/deletions to be made upon signing
Line 8860	Note:
2Aug22 / 4Aug22	

PLUMBING

Inv.439 8	1 - BASEMENT: 3 PIECE BATHROOM - EXTRA 3-PIECE FINISHED BATH, COMPLETE
Line 8854	Note:
2Aug22 / 4Aug22	

Inv.439 9	1 - KITCHEN: INSTALL EXTRA ROUGH-IN LINE FOR FRIDGE ICE MAKER WITH SHUT-OFF
Line 8855	Note:
2Aug22 / 4Aug22	

VACCUM/BELL

Inv.439 11	1 - GOOGLE SMART LEARNING THERMOSTAT
Line 8857	Note:
2Aug22 / 4Aug22	

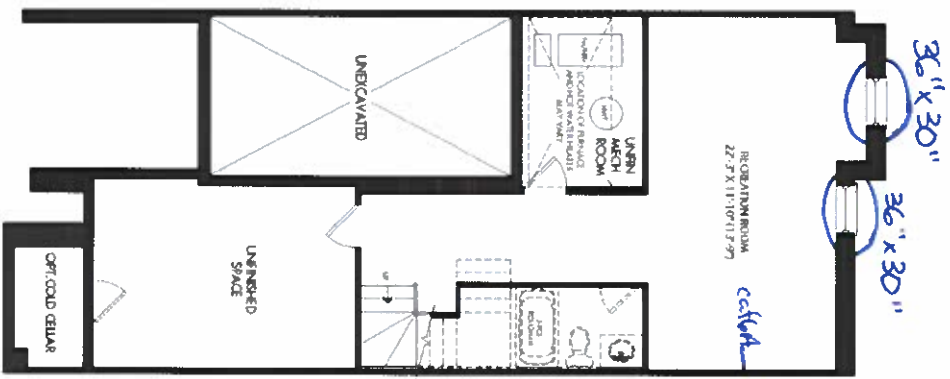
Inv.439 3	1 - FAMILY ROOM: INSTALL 1 1/4" ORANGE FLEX CONDUIT ABOVE FIREPLACE FOR FUTURE TV
Line 8848	Note:
2Aug22 / 4Aug22	

WINDOWS

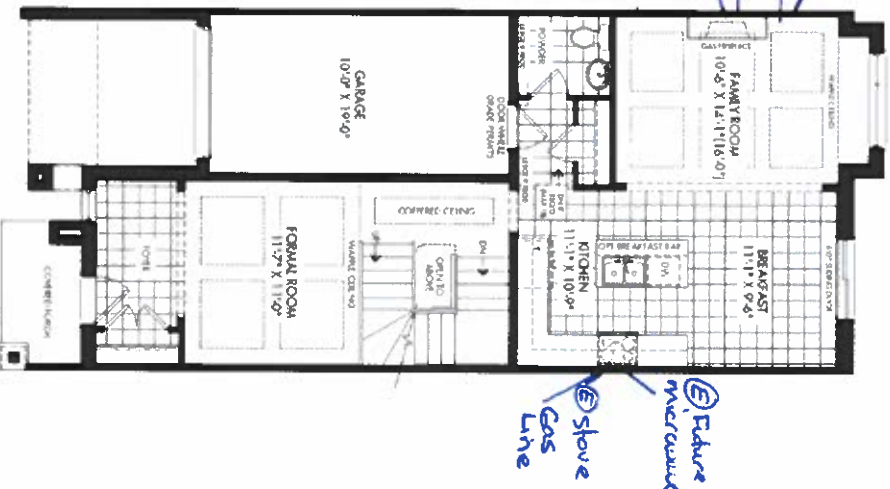
Inv.439 2	2 - BASEMENT: BASEMENT WINDOW - ENLARGE TWO (2) STANDARD WINDOW TO- 36 X 30
Line 8845	Note:
2Aug22 / 4Aug22	

TH-1
SHERWOOD
ELEV.A 2,914 SQ.FT.

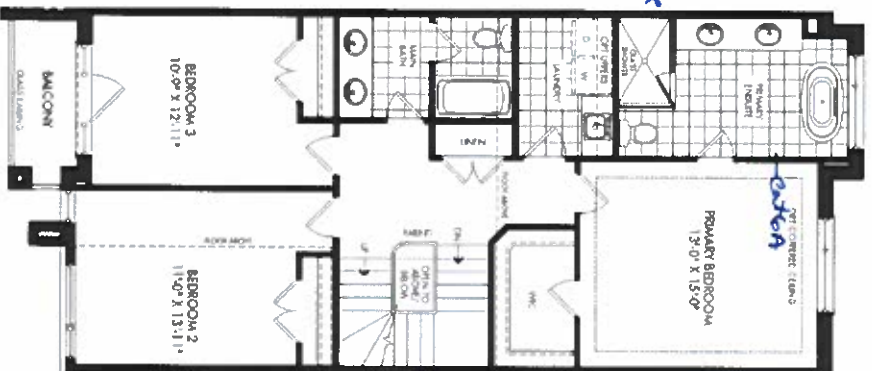
FINISHED
BASEMENT ELEV.A



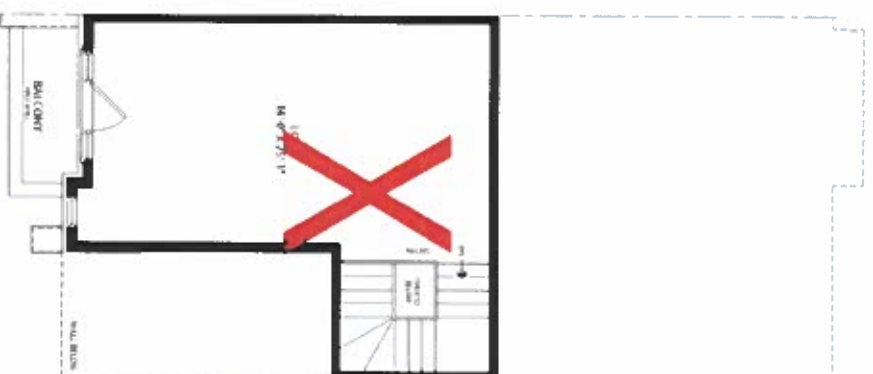
GROUND FLOOR ELEV.A



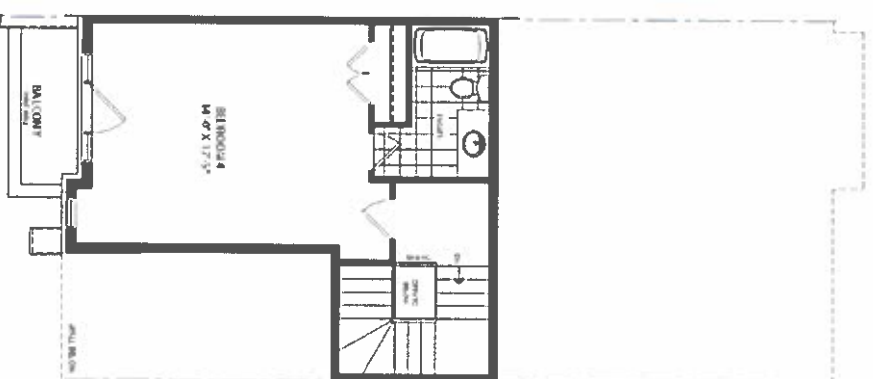
SECOND FLOOR ELEV.A



LOFT PLAN ELEV.A



OPT LOFT PLAN ELEV.A



Opt 236-4
Aug. 2, 22

SCHEDULE "H"

JOSHUA CREEK
MONTAGE

All dimensions are approximate and subject to normal construction variances. Dimensions may exceed the usable floor area. Steel deck catwalks, floor joists, and trusses and conditions are subject to change without notice. Drawings may show optional features which may not be included in the base price. Plans may be revised. Balcony and terrace elevations may apply. Contact a sales advisor for further details. All rights reserved. Valley Homes.

VALERY
HOMES