



CONSTRUCTION SUMMARY

Joshua Creek - 232-2      ARBOURVIEW (TH-02) A

Registere Plan Number:    Municipal Address:    Closing: 29-Sep-23

ELECTRICAL

Inv.473 3	1 - FAMILY ROOM: ELECTRICAL - ROUGH-IN FOR 15 AMP FOR FUTURE TV ABOVE FIREPLACE
Line 9624	Note:
25Oct22 / 25Oct22	
Inv.473 5	6 - FAMILY ROOM: INSTALL SIX (6) POT LIGHT - 4" LED NON-INSULATED CEILINGS. LOCATIONS MAY VARY SLIGHTLY DUE TO JOIST LOCATIONS
	*DELETE STANDARD LIGHT
Line 9626	Note:
25Oct22 / 25Oct22	
Inv.473 6	4 - FORMAL ROOM: INSTALL FOUR (4) POT LIGHT - 4" LED NON-INSULATED CEILINGS. LOCATIONS MAY VARY SLIGHTLY DUE TO JOIST LOCATIONS
	**KEEP STANDARD LIGHT
Line 9627	Note:
25Oct22 / 25Oct22	
Inv.473 7	2 - MAIN BATH & LOFT BATH: INSTALL POT LIGHT - 4" LED - SHOWER CEILINGS, ON SEPATATE SWITCH
Line 9628	Note:
25Oct22 / 25Oct22	
Inv.473 8	1 - ELECTRICAL - ROUGH-IN FOR AC UNIT. INCLUDES BREAKER & LOW VOLTAGE WIRE
Line 9629	Note:
25Oct22 / 25Oct22	

MISCELLANEOUS

Inv.473 13	1 - Purchaser has attended a Structural appointment at the Decor Centre & has DECLINED any additional upgrades and accepts and acknowledges that there will be no further structural changes/additions/deletions to be made upon signing
Line 9636	Note: Purchaser accepts & acknowledges that all upgrades are to be approved by construction before the invoice is accepted.
25Oct22 / 25Oct22	

PLUMBING

Inv.473 12	1 - BACKFLOW PREVENTER VALVE
Line 9635	Note:
25Oct22 / 25Oct22	



CONSTRUCTION SUMMARY

Joshua Creek - 232-2      ARBOURVIEW (TH-02) A

Registere Plan Number:    Municipal Address:    Closing: 29-Sep-23

Inv.473	1 - KITCHEN: INSTALL EXTRA ROUGH-IN LINE FOR FRIDGE ICE MAKER WITH SHUT-OFF
9	
Line 9630	Note:
25Oct22 / 25Oct22	

VACCUM/BELL

Inv.473	1 - CAT-6 NETWORK CABLE FOR INTERNET- TERMINATED
10	
Line 9631	Note:
25Oct22 / 25Oct22	

Inv.473	1 - CAT 6A LOCATION SKETCH. LOCATIONS MAY VARY SLIGHTLY DUE TO JOIST
1	LOCATIONS
Line 9622	Note:
25Oct22 / 25Oct22	

Inv.473	1 - FAMILY ROOM: INSTALL 1 1/4" ORANGE FLEX CONDUIT FOR FUTURE TV ABOVE
2	FIREPLACE
Line 9623	Note:
25Oct22 / 25Oct22	

WINDOWS

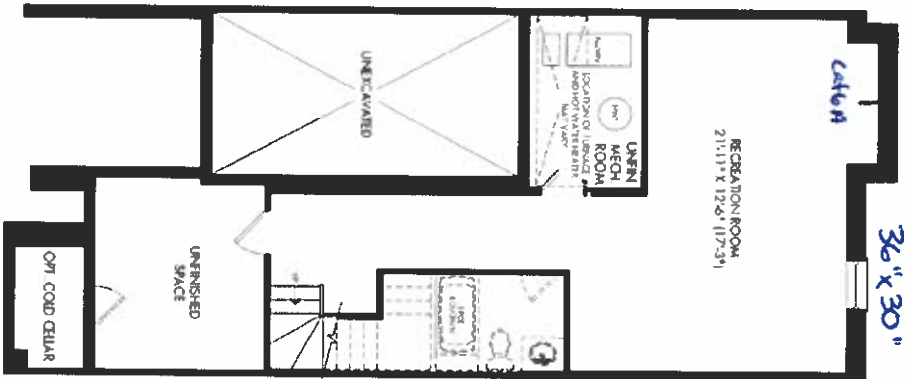
Inv.473	1 - LOFT/ 4TH BEDROOM: INSTALL SKYLIGHT 2' X 4', ABOVE STAIRS.
11	
	TO BE APPROVED BY CONSTRUCTION
Line 9634	Note:
25Oct22 / 25Oct22	

WINDOWS

Inv.473	1 - BASEMENT: BASEMENT WINDOW - ENLARGE STANDARD WINDOW TO- 36 X 30
4	
Line 9625	Note:
25Oct22 / 25Oct22	

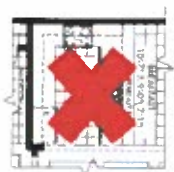
TH-2  
ARBOURVIEW  
ELEV A 2,903 SQ. FT.

FINISHED  
BASEMENT ELEV. A



JOSHUA CREEK  
MONTAGE

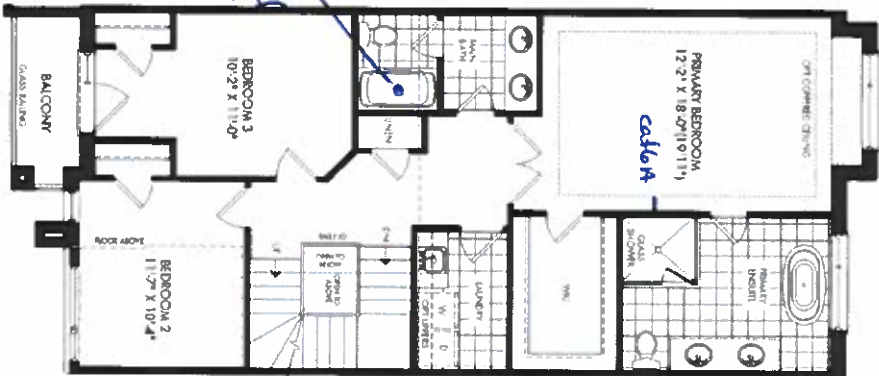
PARTIAL OPTIONAL KITCHEN



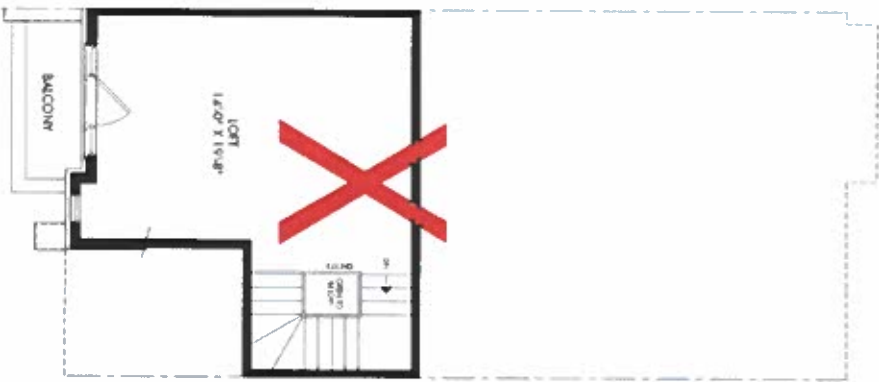
GROUND FLOOR ELEV. A



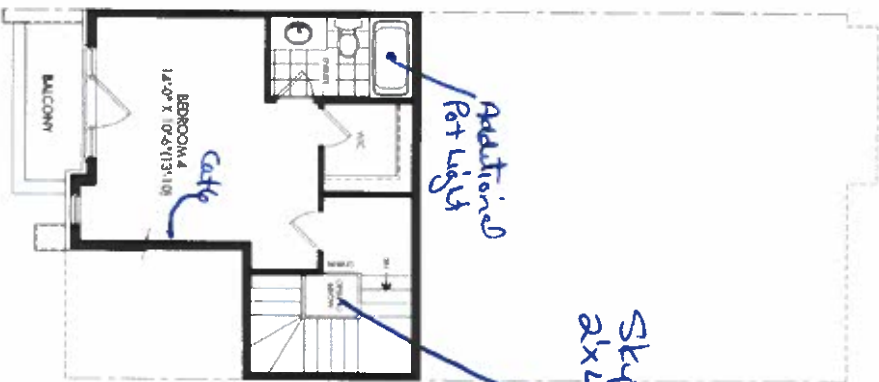
SECOND FLOOR ELEV. A



LOFT PLAN ELEV. A



OPT. LOFT PLAN ELEV. A



SCHEDULE "H"

Lot 232-2

W4 E4

Lot 25, 22

A. Dimensions are approximate and subject to normal construction variances. Dimensions may exceed the usable floor area. Sizes, specifications, floor plans and terms and conditions are subject to change without notice. Drawings may show optional features which may not be included in the base price. Plans may be amended. Balcony and facade variations may apply. Contact is as advised for further details. All renderings are artist's conceptions. E. & O.E. All rights reserved. Valley Homes.

VALERY  
HOMES