



CONSTRUCTION SUMMARY

Joshua Creek - 288-1      SHERWOOD (TH-01) A END

Registere Plan Number:    Municipal Address:    Closing: 16-Nov-23

BONUS

Inv.519 12 Line 10518  13Feb23 / 17Feb23	1 - BONUS PACKAGE: \$5,000.00 WORTH OF UPGRADES FROM VALERY HOMES DÉCOR CENTRE IS BEING APPLIED TOWARD THE STRUCTURAL APPOINTMENT.  Note:
--	---

CEILING

Inv.519 9 Line 10515  13Feb23 / 17Feb23	1 - SECOND FLOOR: SMOOTH CEILING THROUGHOUT SECOND FLOOR  Note:
---	---

Inv.519 10 Line 10516  13Feb23 / 17Feb23	1 - LOFT: SMOOTH CEILING THROUGHOUT LOFT AREA  Note:
--	--

ELECTRICAL

Inv.519 5 Line 10511  13Feb23 / 17Feb23	1 - KITCHEN: CABINET LIGHTING - UNDERMOUNT T-5 LED VALANCE LIGHT. LIGHT ONLY  Note: Valance must be purchased at the colour appointment to cover lights
---	---

Inv.519 6 Line 10512  13Feb23 / 17Feb23	1 - ELECTRICAL - ROUGH-IN FOR AC UNIT. INCLUDES BREAKER & LOW VOLTAGE WIRE  Note:
---	---

EXTERIOR DOORS

Inv.519 11 Line 10517  13Feb23 / 17Feb23	1 - KITCHEN-BREAKFAST AREA: EXTERIOR DOOR - REPLACE STANDARD 5 ft SLIDING PATIO DOOR WITH 5 ft -6 in FRENCH DOORS, WITH SCREEN  Note:
--	---

INTERIOR DOOR & TRIM

Inv.519 4 Line 10510  13Feb23 / 17Feb23	1 - GRIP SET- STRAIT IN MATTE BLACK  Note:
---	--

INTERIOR DOOR AND TRIM



CONSTRUCTION SUMMARY

Joshua Creek - 288-1     · SHERWOOD (TH-01) A END

Registere Plan Number:    Municipal Address:    Closing: 16-Nov-23

Inv.519 3	1 - INTERIOR DOOR HARDWARE-TOWNS, 1948 IN MATTE BLACK. INCL. EXTERIOR DOOR, NOT GRIP SET.
Line 10509	Note:
13Feb23 / 17Feb23	

INTERIOR DOORS & TRIM

Inv.519 2	14 - SECOND FLOOR: INTERIOR DOOR & TRIM - EXTENDED HEIGHT DOOR 96 INCH - 2ND FLOOR, UPGRADE FROM STD. 84". 14 DOORS TOTAL
Line 10508	Note:
13Feb23 / 17Feb23	

MISCELLANEOUS

Inv.519 13	1 - Purchaser has attended a Structural appointment at the Decor Centre & has DECLINED any additional upgrades and accepts and acknowledges that there will be no further structural changes/additions/deletions to be made upon signing
Line 10519	Note: Purchasers are aware & accept that ANY changes made to upgrades after signing this Purchasers Extra Form are subject to an administration fee
13Feb23 / 17Feb23	

PLUMBING

Inv.519 7	1 - BASEMENT: 3 PIECE BATHROOM - EXTRA 3-PIECE FINISHED BATH, COMPLETE
Line 10513	Note:
13Feb23 / 17Feb23	

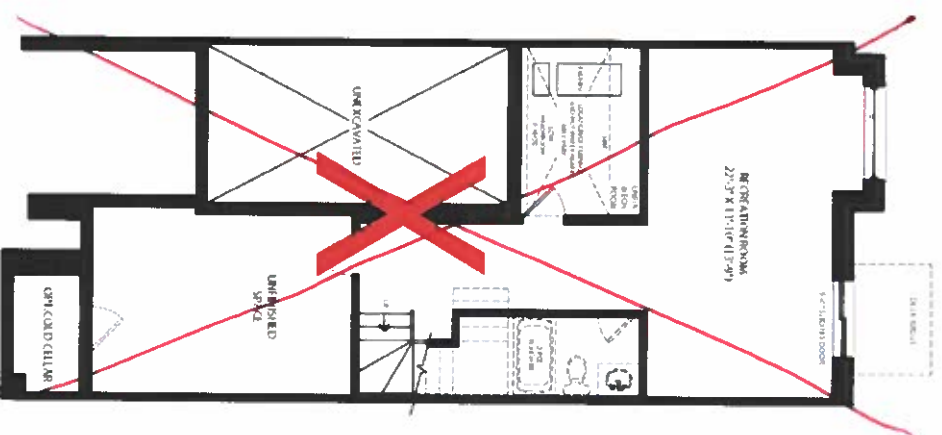
Inv.519 8	1 - KITCHEN: EXTRA ROUGH-IN LINE FOR FRIDGE ICE MAKER WITH SHUT-OFF
Line 10514	Note:
13Feb23 / 17Feb23	

VACCUM/BELL

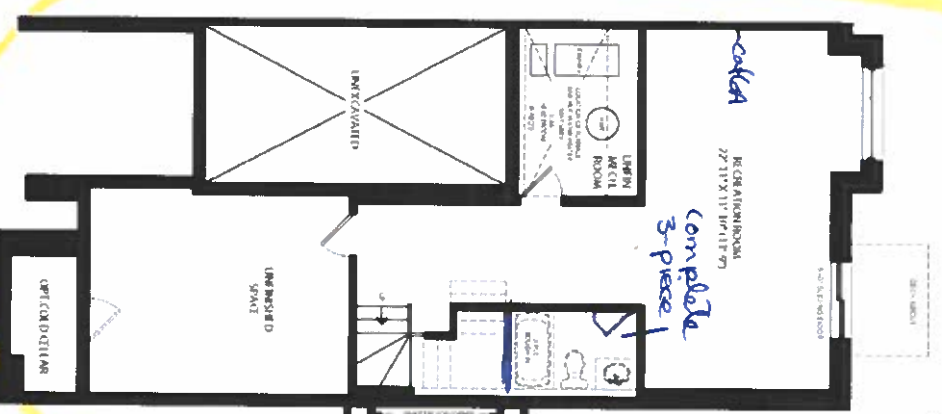
Inv.519 1	1 - CAT 6A LOCATION SKETCH. LOCATIONS MAY VARY SLIGHTLY DUE TO JOIST LOCATIONS (STD)
Line 10507	Note:
13Feb23 / 17Feb23	

## ELEV: A WOB 2.914 SQ FT

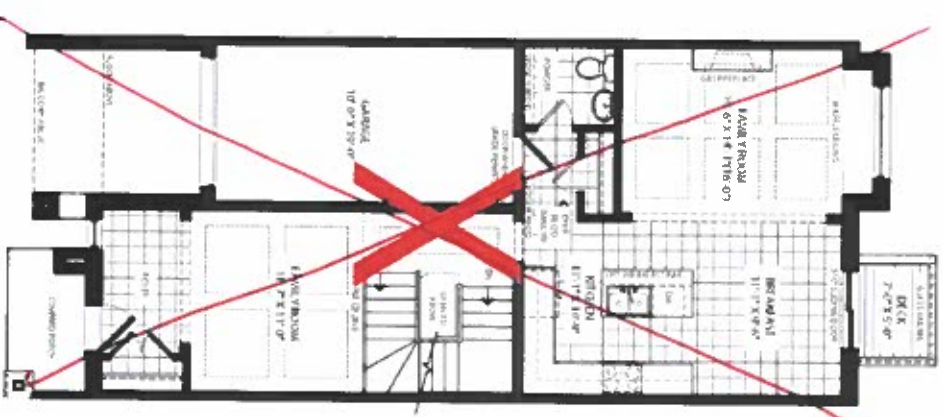
MOA



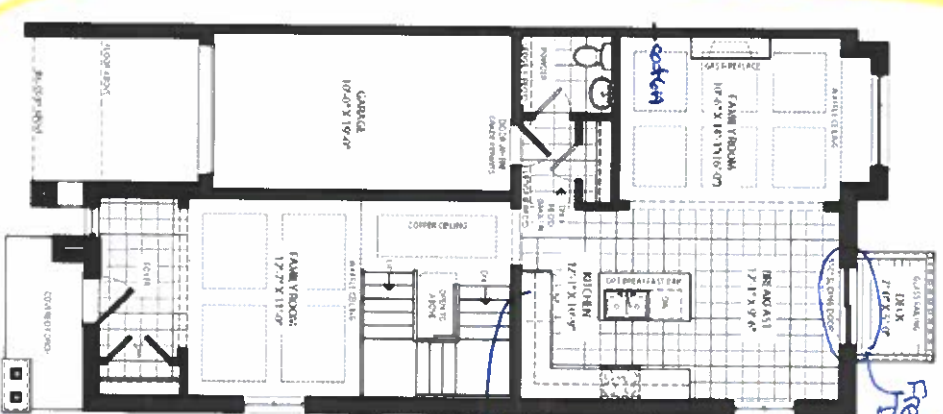
END CONDITION W05



WOB



END CONDITION WOB



SCHEDULE "H"

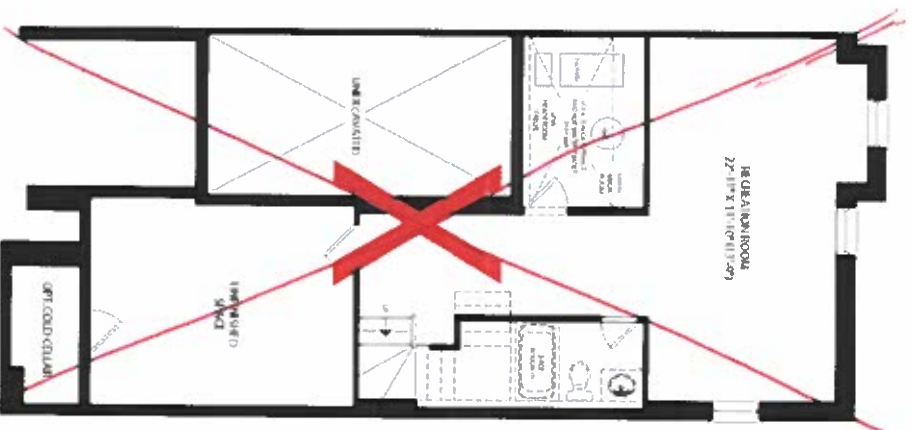
## MONTAGE

[illegible]

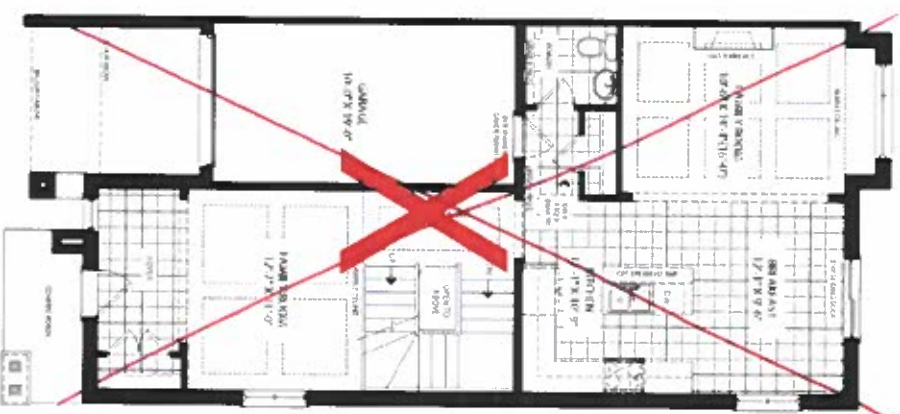
BOOKS

~~TH-1  
SHEMWOOD  
ELEV. A END 3.107 SQ. FT.~~

FINISHED BASEMENT ELEV. A  
END CONDITION



GROUND FLOOR ELEV A  
END CONDITION



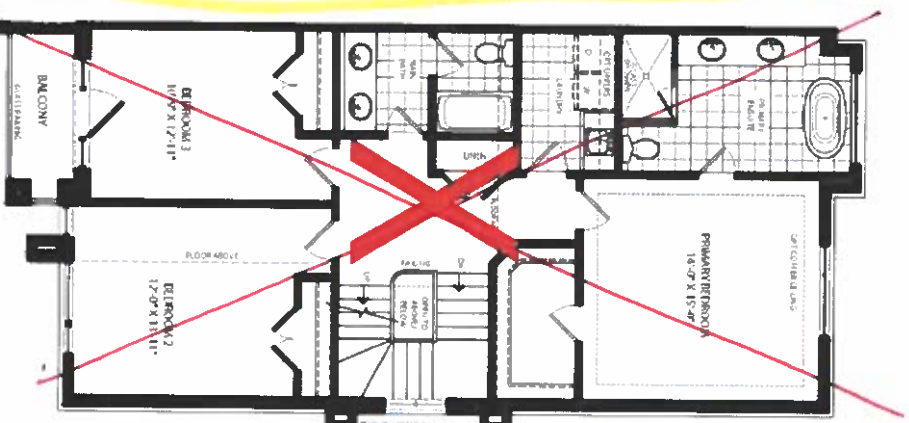
SECOND FLOOR ELEV A  
END CONDITION



Smooth Ceiling

14 extended  
height doors

SECOND FLOOR ELEV. A  
END CONDITION CORNER UPGRADE



LOFT PLANE ELEV A  
END CONDITION



OPT LOFT PLAN FILE: A  
END CONDITION

Smooth Ceiling



**JOSHUA CREEK**  
**MONTAGE**

[illegible]

Oct 288-1 OK  
 Oct. 13, 23  
 SCHEDULE "H"

# VALERY