



CONSTRUCTION SUMMARY

Joshua Creek - 204-1      SHERWOOD (TH-01) B END

Registere Plan Number:    Municipal Address:    Closing: 10-Nov-23

BONUS

Inv.525	1 - BONUS PACKAGE: \$5,000.00 WORTH OF UPGRADES FROM VALERY HOMES DECOR
34	CENTRE IS BEING APPLIED TOWARD THE STRUCTURAL APPOINTMENT
Line 10599	Note:
22Feb23 / 27Feb23	

CEILING

Inv.525	1 - LOFT: SMOOTH CEILING THROUGHOUT LOFT AREA
2	
Line 10566	Note:
22Feb23 / 27Feb23	

Inv.525	1 - SECOND FLOOR: SMOOTH CEILING THROUGHOUT SECOND FLOOR
3	
Line 10567	Note:
22Feb23 / 27Feb23	

Inv.525	1 - BASEMENT: SMOOTH CEILING THROUGHOUT SECOND FLOOR
4	
Line 10568	Note:
22Feb23 / 27Feb23	

ELECTRICAL

Inv.525	1 - KITCHEN: CEILING FIXTURE - RELOCATE STANDARD CEILING FIXTURE, ABOVE
11	ISLAND
Line 10575	Note: Location may vary slightly due to joist location
22Feb23 / 27Feb23	

Inv.525	4 - KITCHEN: INSTALL FOUR (4) POT LIGHTS - 4" LED NON-INSULATED CEILINGS. ON
12	SEPARATE SWITCH
Line 10576	Note: Location may vary slightly due to joist location
22Feb23 / 27Feb23	

Inv.525	4 - BREAKFAST AREA: INSTALL FOUR (4) POT LIGHTS - 4" LED NON-INSULATED CEILINGS.
13	ON SEPARATE SWITCH
Line 10577	Note: Location may vary slightly due to joist location
22Feb23 / 27Feb23	

Inv.525	6 - FAMILY ROOM: INSTALL SIX (6) POT LIGHTS - 4" LED NON-INSULATED CEILINGS.
14	DELETE STANDARD LIGHT
Line 10578	Note: Location may vary slightly due to joist location
22Feb23 / 27Feb23	



CONSTRUCTION SUMMARY

Joshua Creek - 204-1      SHERWOOD (TH-01) B END

Registere Plan Number:    Municipal Address:    Closing: 10-Nov-23

Inv.525 15 Line 10579  22Feb23 / 27Feb23	2 - MAIN HALL: INSTALL TWO (2) POT LIGHTS - 4" LED NON-INSULATED CEILINGS. DELETE STANDARD LIGHT  Note: Location may vary slightly due to joist location
Inv.525 16 Line 10580  22Feb23 / 27Feb23	4 - FORMAL ROOM: INSTALL FOUR (4) POT LIGHTS - 4" LED NON-INSULATED CEILINGS, ON SEPARATE SWITCH. KEEP STANDARD LIGHT  Note: Location may vary slightly due to joist location
Inv.525 17   Line 10582  22Feb23 / 27Feb23	3 - FAMILY ROOM - FORMAL ROOM & KITCHEN: INSTALL THREE (3) SWITCHES - DIMMER FOR LED POT LIGHTS  FOR FAMILY ROOM, FORMAL ROOM AND KITCHEN POT LIGHTS  Note:
Inv.525 18 Line 10583  22Feb23 / 27Feb23	1 - FAMILY ROOM: ELECTRICAL - DEDICATED 15 AMP 120 V FOR FUTURE TV ABOVE FIREPLACE  Note:
Inv.525 32 Line 10597  22Feb23 / 27Feb23	1 - FAMILY ROOM: ELECTRICAL - DEDICATED 15 AMP 120 V FOR ELECTRIC FIREPLACE  Note:
Inv.525 21 Line 10586  22Feb23 / 27Feb23	1 - KITCHEN: INSTALL CABINET LIGHTING - UNDERMOUNT T-5 LED VALANCE LIGHT. LIGHT ONLY  Note: Valance must be purchased at the colour appointment to cover lights
Inv.525 22 Line 10587  22Feb23 / 27Feb23	1 - KITCHEN: INSTALL ELECTRICAL - ROUGH-IN FOR 40 AMP 220 V BUILT-IN WALL OVEN  Note:

EXTERIOR DOORS

Inv.525 6 Line 10570  22Feb23 / 27Feb23	1 - BREAKFAST AREA: EXTERIOR DOOR - REPLACE STANDARD 5 ft SLIDING PATIO DOOR WITH 5 ft -6 in FRENCH DOORS, WITH SCREEN  Note:
---	---

FIREPLACE



CONSTRUCTION SUMMARY

Joshua Creek - 204-1      SHERWOOD (TH-01) B END

Registere Plan Number:    Municipal Address:    Closing: 10-Nov-23

Inv.525	1 - FAMILY ROOM: FIREPLACE - ALLURAVISION 50 INCH DEEP DEPTH ELECTRIC
31	FIREPLACE - GLASS FRONT - BLACK - INCLUDES SOUTH BEACH LOG SET - NEFL50CHD.
Line 10596	Note:
22Feb23 / 27Feb23	

GARAGE DOORS

Inv.525	1 - GARAGE: OVERHEAD GARAGE DOOR - LIFTMASTER 8355W - 1/2 HP BELT - INCLUDES 2
33	REMOTES & 1 KEYPAD - 8 FT
Line 10598	Note:
22Feb23 / 27Feb23	

HVAC

Inv.525	1 - AIR CONDITIONER AND FLOW - THROUGH HUMIDIFIER - ML 14, 14 SEER - 2.5 TON -
20	WITH FLOW THRU HUMIDIFIER
Line 10585	Note:
22Feb23 / 27Feb23	

Inv.525	1 - KITCHEN: INSTALL GAS PIPING AND OTHER - UPGRADE STOVE VENT FROM STANDARD
24	6 INCH TO 8 INCH
Line 10589	Note:
22Feb23 / 27Feb23	

INTERIOR DOOR & TRIM

Inv.525	1 - GRIP SET- LONDON IN POLISHED CHROME
10	
Line 10574	Note:
22Feb23 / 27Feb23	

Inv.525	18 - MAIN FLOOR AND SECOND FLOOR: INSTALL CONMORE DOOR, 5 PANEL, HOLLOW
7	CORE 96" H- EIGHTEEN (18) DOORS
Line 10571	Note:
22Feb23 / 27Feb23	

Inv.525	7 - BASEMENT AND LOFT: INSTALL CONMORE DOOR, 5 PANEL, HOLLOW CORE 84" H
8	SEVEN (7) DOORS
Line 10572	Note:
22Feb23 / 27Feb23	

INTERIOR DOOR AND TRIM



CONSTRUCTION SUMMARY

Joshua Creek - 204-1      SHERWOOD (TH-01) B END

Registere Plan Number:    Municipal Address:    Closing: 10-Nov-23

Inv.525	1 - INTERIOR DOOR HARDWARE-TOWNS, ART DECO IN POLISHED NICKEL INCL.
9	EXTERIOR DOOR, NOT GRIP SET.
Line 10573	Note:
22Feb23 / 27Feb23	

INTERIOR DOORS & TRIM

Inv.525	14 - SECOND FLOOR: INTERIOR DOOR & TRIM - EXTENDED HEIGHT DOOR 96 INCH - 2ND
5	FLOOR, UPGRADE FROM STD. 84"
Line 10569	Note:
22Feb23 / 27Feb23	

MISCELLANEOUS

Inv.525	1 - Purchaser has attended a Structural appointment at the Decor Centre & has DECLINED any additional
35	upgrades and accepts and acknowledges that there will be no further structural
	changes/additions/deletions to be made upon signing
Line 10600	Note: Purchasers are aware & accept that ANY changes made to upgrades after signing this Purchasers Extra Form
	are subject to an administration fee
22Feb23 / 27Feb23	
Purchaser accepts & acknowledges that all upgrades are to be approved by construction before the invoice is	
accepted	

PLUMBING

Inv.525	1 - KITCHEN: INSTALL EXTRA ROUGH-IN LINE FOR FRIDGE ICE MAKER WITH SHUT-OFF
23	
Line 10588	Note:
22Feb23 / 27Feb23	
Inv.525	1 - BASEMENT: INSTALL 3 PIECE BATHROOM - EXTRA 3-PIECE FINISHED BATH, COMPLETE
25	
Line 10590	Note:
22Feb23 / 27Feb23	
Inv.525	1 - PRIMARY ENSUITE: INSTALL PLUMBING FOR RAIN SHOWERHEAD FROM CEILING,
26	MUST PURCHASE SHOWERHEAD. IN LIEU OF STANDARD SHOWERHEAD ON WALL
Line 10591	Note:
22Feb23 / 27Feb23	
Inv.525	1 - PRIMARY ENSUITE: KEEP STANDARD SHOWERHEAD, IN ADDITION TO UPGRADED RAIN
27	SHOWER
Line 10592	Note:
22Feb23 / 27Feb23	



CONSTRUCTION SUMMARY

Joshua Creek - 204-1      SHERWOOD (TH-01) B END

Registere Plan Number:    Municipal Address:    Closing: 10-Nov-23

Inv.525 28	1 - PRIMARY ENSUITE: UPGRADE TO MOEN RAIN SHOWER HEAD
	12" RAINSHOWER WITH IMMERSION #S1004
Line 10593	Note:
22Feb23 / 27Feb23	
Inv.525 29	1 - PRIMARY ENSUITE: INSTALL 6" STRAIGHT SHOWER ARM FOR RAIN SHOWER HEAD
	116651 CHROME
Line 10594	Note:
22Feb23 / 27Feb23	
Inv.525 30	1 - BACKFLOW PREVENTER VALVE
Line 10595	Note:
22Feb23 / 27Feb23	

VACCUM/BELL

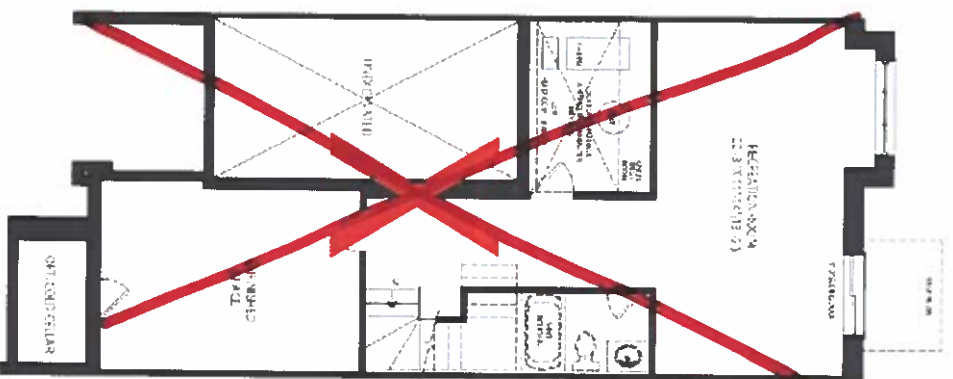
Inv.525 1	1 - CAT 6A LOCATION SKETCH. LOCATIONS MAY VARY SLIGHTLY DUE TO JOIST LOCATIONS (STD)
Line 10564	Note:
22Feb23 / 27Feb23	
Inv.525 19	1 - FAMILY ROOM: INSTALL 1 1/4" ORANGE FLEX CONDUIT FOR FUTURE TV
Line 10584	Note: LOCATIONS MAY VARY SLIGHTLY DUE TO JOIST LOCATIONS
22Feb23 / 27Feb23	

# TH-1 SHERWOOD

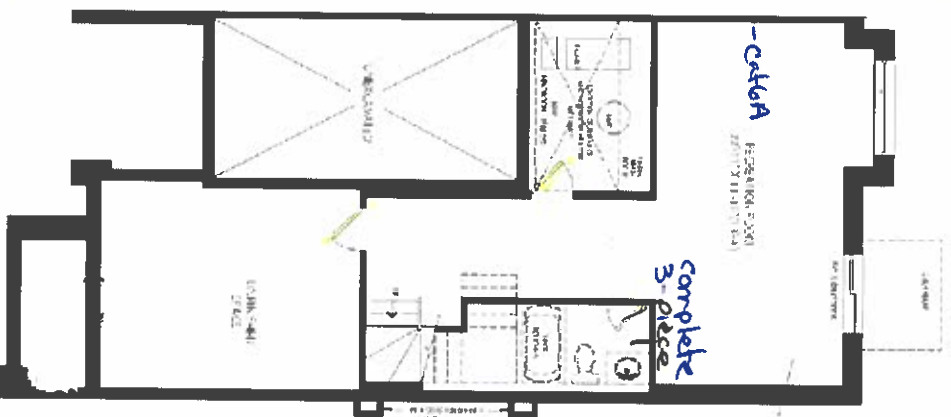
ELEV 3 WOB 2903 SQ FT

## JOSHUA CREEK MONTAGE

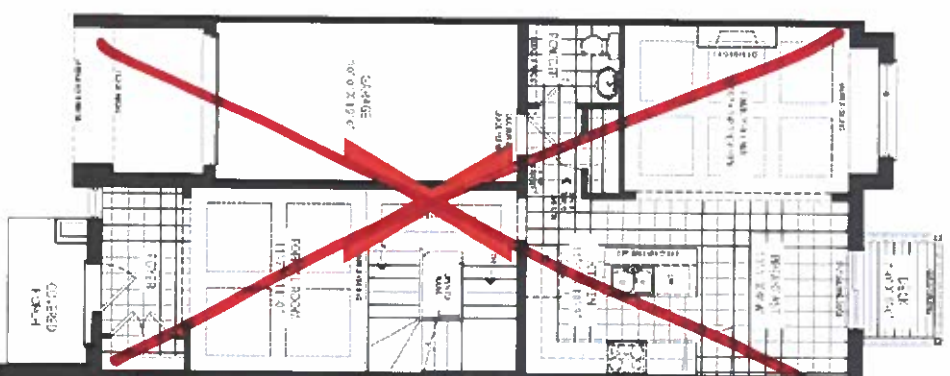
FINISH FDBASEMENT ELEV 6  
WOB



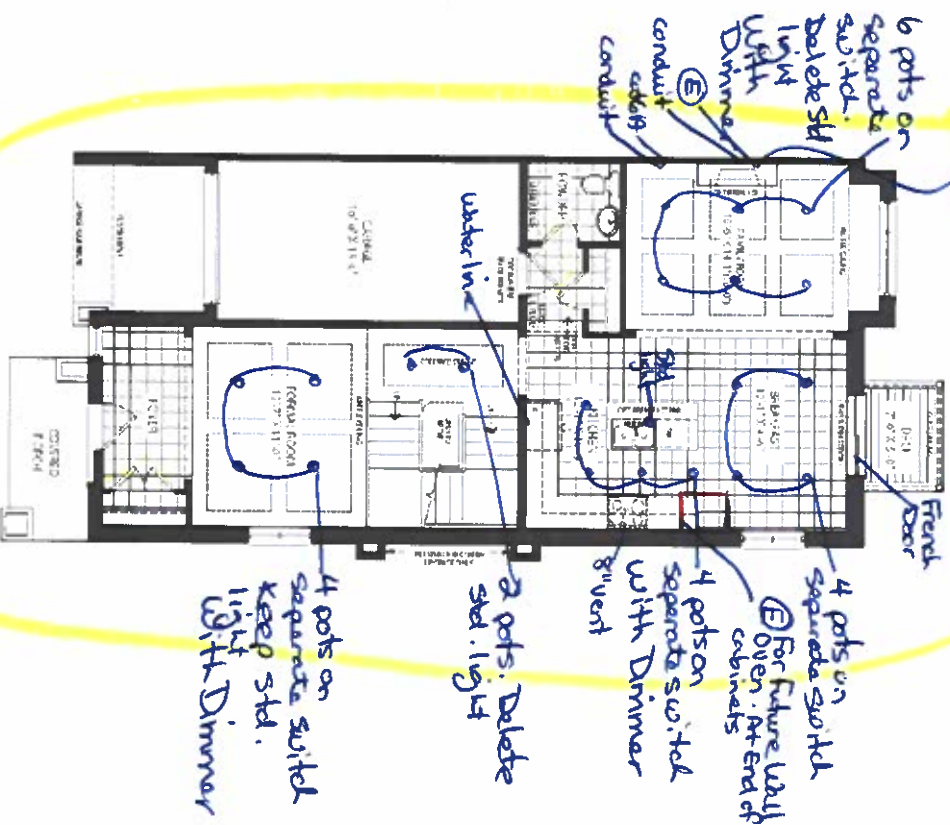
FINISH FDBASEMENT ELEV 6  
END CONDITION WOB



GROUND FLOOR ELEV 8  
WOB



Ⓔ Replace Gas Fireplace  
with Electric  
GROUND FLOOR ELEV 8  
END CONDITION WOB



## SCHEDULE "H"

Set 204-1 (K) (H)  
Feb. 22, 23

THIS DRAWING IS THE PROPERTY OF VALERY HOMES. IT IS TO BE USED ONLY FOR THE PROJECT AND SITE SPECIFICALLY IDENTIFIED HEREON. IT IS NOT TO BE REPRODUCED, COPIED, OR TRANSMITTED IN ANY FORM OR BY ANY MEANS, ELECTRONIC OR MECHANICAL, INCLUDING PHOTOCOPYING, RECORDING, OR BY ANY INFORMATION STORAGE AND RETRIEVAL SYSTEM. WITHOUT THE WRITTEN PERMISSION OF VALERY HOMES, ANY REUSE OR MODIFICATION OF THIS DRAWING IS STRICTLY PROHIBITED. VALERY HOMES ASSUMES NO LIABILITY FOR ANY ERRORS OR OMISSIONS. THE USER OF THIS DRAWING AGREES TO HOLD VALERY HOMES HARMLESS FROM ANY AND ALL CLAIMS, DAMAGES, LOSSES, AND EXPENSES, INCLUDING ATTORNEY'S FEES, THAT MAY BE ASSERTED AGAINST VALERY HOMES BY ANY THIRD PARTY AS A RESULT OF THE USER'S USE OF THIS DRAWING.

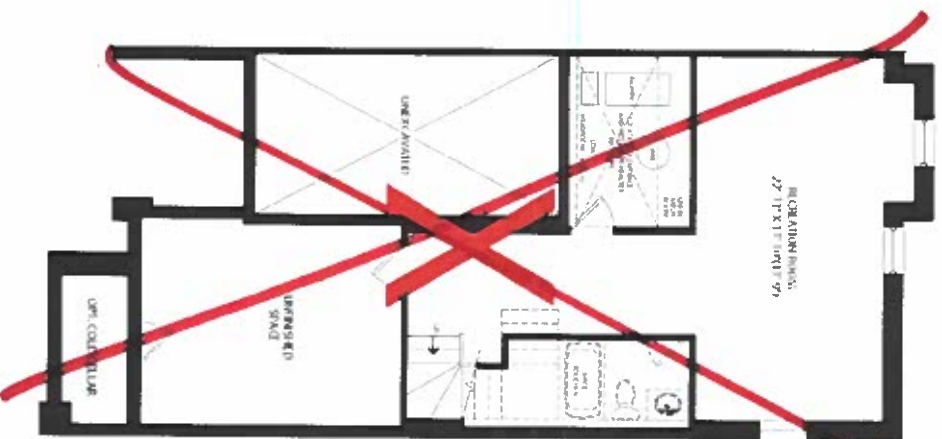
## VALERY HOMES



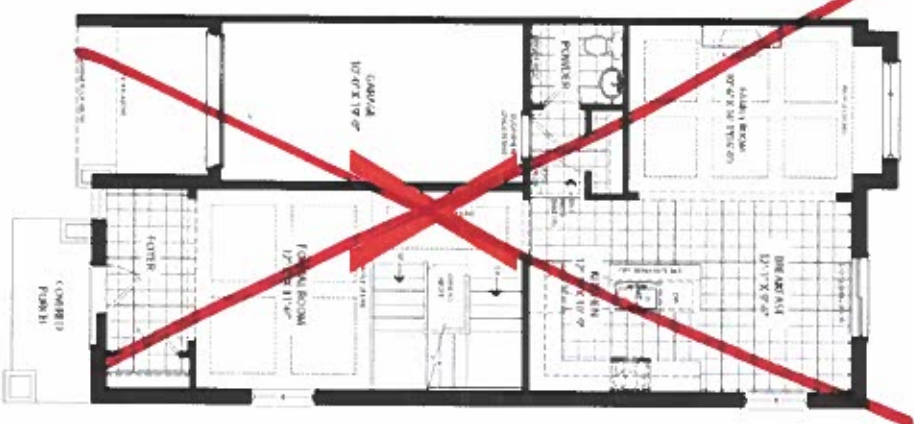
~~TH-H~~  
~~SHERWOOD~~  
ELEV BEND 3,099 SQ FT

ELEV. B END 3,099 SQ. FT.

FINISHED BASEMENT ELEV 5  
END CONDITION



GROUND FLOOR ELEV B  
END CONDITION



SECOND FLOOR FIVE B  
END CONDITION



SECOND FLOOR ELEV B  
END CONDITION CORNERS UPGRADE



LOFT PLANTLEY B  
END CONDITION

OPT 101 PLAN FLEV.3  
END CONDITION

**JOSHUA CREEK**  
**MONTAGE**

[illegible]

Extended Height  
Doors - 14 total

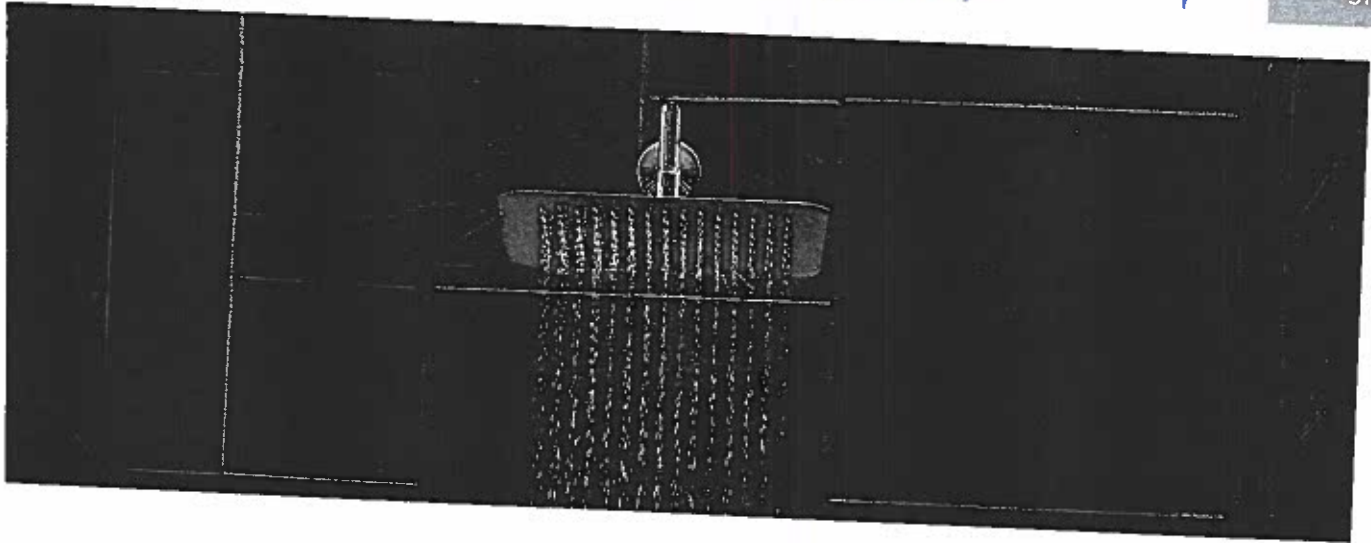
# VALERY

SCHEDULE "H"  
2021  
2022  
2023  
2024  
2025

# Rainshowers

Lot 2041

SHOWERING



Rainshower with  
Immersion™

Model S1002 \$558.75



10" Rainshower with  
Immersion™

Model S1003  
Chrome \$691.25



Chrome



Rainshower with  
Immersion™

Model S1001 \$699.44



12" Rainshower with  
Immersion™

Model S1004  
Chrome \$732.00



Chrome

Model S1001 model, use model number only.



# Snowowering Arms & Flanges

SHOWERING

Lot 204-1



**5' Overhead Shower Arm**

51380

Chrome \$109.13  
Other \$187.13



Chrome, LifeShine® Brushed Nickel (BN),  
Polished Nickel (NL), Oil Rubbed Bronze (ORB),  
Matte Black (BL), Brushed Gold (BG)



**8' Curved Shower Arm**

123815

Chrome \$40.88  
Oil Rubbed Bronze \$93.19  
Other \$90.63



Chrome, LifeShine® Brushed Nickel (BN), LifeShine®  
Polished Nickel (NL), Oil Rubbed Bronze (ORB),  
Matte Black (BL), Brushed Gold (BG)



**Straight Shower Arm**

651

Chrome \$73.44  
Other \$133.25



Chrome, LifeShine® Brushed Nickel (BN), LifeShine®  
Polished Nickel (NL), Oil Rubbed Bronze (ORB),  
Wrought Iron (WR), Brushed Gold (BG)



**6' Straight Shower Arm**

116651

Chrome \$28.63  
Other \$47.06



Chrome, LifeShine® Brushed Nickel (BN), LifeShine®  
Polished Nickel (NL), Oil Rubbed Bronze (ORB),  
Wrought Iron (WR), Brushed Gold (BG)



**Round Shower Flange**

18

Chrome \$12.88  
Other \$33.38  
Black /  
Polished Nickel \$35.31



LifeShine® Brushed Nickel (BN),  
Polished Nickel (NL),  
Matte Black (BL), Brushed Gold (BG)



**Square Shower Flange**

147572

Chrome \$26.31  
Other \$52.63



Chrome, LifeShine® Brushed Nickel (BN),



**Round Shower Flange**

AT2199

Chrome \$16.38  
Other \$43.63



Chrome, LifeShine® Brushed Nickel (BN), LifeShine®  
Polished Nickel (NL), Oil Rubbed Bronze (ORB),  
Wrought Iron (WR), Brushed Gold (BG)

Enter the model number with one of these finish letter(s): LifeShine® Brushed Nickel (BN), Oil Rubbed Bronze (ORB), LifeShine® Polished Nickel (NL), Wrought Iron (WR), Brushed Gold (BG) & Matte Black (BL).  
Some (C) model, use model number only.