



CONSTRUCTION SUMMARY

Joshua Creek - 203-1 SHERWOOD (TH-01) A END

Registere Plan Number: Municipal Address: Closing: 30-Oct-23

BONUS

Inv.508	1 - BONUS PACKAGE: \$5,000.00 WORTH OF UPGRADES FROM VALERY HOMES DÉCOR
15	CENTRE IS BEING APPLIED TOWARD THE STRUCTURAL APPOINTMENT.
Line 10325	Note:
23Jan23 / 27Jan23	

CEILING

Inv.508	1 - LOFT: SMOOTH CEILING THROUGHOUT LOFT AREA
2	
Line 10312	Note:
23Jan23 / 27Jan23	

Inv.508	1 - SECOND FLOOR: SMOOTH CEILING THROUGHOUT SECOND FLOOR
3	
Line 10313	Note:
23Jan23 / 27Jan23	

Inv.508	1 - BASEMENT: SMOOTH CEILING THROUGHOUT BASEMENT
4	
Line 10314	Note:
23Jan23 / 27Jan23	

ELECTRICAL

Inv.508	1 - FAMILY ROOM: ELECTRICAL - DEDICATED 15 AMP 120 V FOR FUTURE TV ABOVE
7	FIREPLACE
Line 10317	Note:
23Jan23 / 27Jan23	

Inv.508	1 - GARAGE: RECEPTACLES - EV STATION DEDICATED 220 VOLT RECEPTACLE
9	
Line 10319	Note:
23Jan23 / 27Jan23	

EXTERIOR DOORS

Inv.508	1 - BREAKFAST AREA: REPLACE 5' PATIO DOOR WITH 5'-6" FRENCH DOORS (WITH SCREEN)
6	
Line 10316	Note:
23Jan23 / 27Jan23	

HVAC



CONSTRUCTION SUMMARY

Joshua Creek - 203-1 SHERWOOD (TH-01) A END

Registere Plan Number: Municipal Address: Closing: 30-Oct-23

Inv.508 10 Line 10320	1 - AIR CONDITIONER AND FLOW - THROUGH HUMIDIFIER - ML 14, 14 SEER - 2.5 TON - WITH FLOW THRU HUMIDIFIER Note:
23Jan23 / 27Jan23	

INTERIOR DOORS & TRIM

Inv.508 5 Line 10315	14 - SECOND FLOOR: INTERIOR DOOR & TRIM - EXTENDED HEIGHT DOOR 96 INCH - 2ND FLOOR, UPGRADE FROM STD. 84"- 14 DOORS Note:
23Jan23 / 27Jan23	

MISCELLANEOUS

Inv.508 16 Line 10326	1 - Purchaser has attended a Structural appointment at the Decor Centre & has DECLINED any additional upgrades and accepts and acknowledges that there will be no further structural changes/additions/deletions to be made upon signing Note: Purchaser accepts & acknowledges that all upgrades are to be approved by construction before the invoice is accepted.
23Jan23 / 27Jan23	

PLUMBING

Inv.508 11 Line 10321	1 - BASEMENT: 3 PIECE BATHROOM - EXTRA 3-PIECE FINISHED BATH, COMPLETE Note:
23Jan23 / 27Jan23	
Inv.508 12 Line 10322	1 - KITCHEN: INSTALL EXTRA ROUGH-IN LINE FOR FRIDGE ICE MAKER WITH SHUT-OFF Note:
23Jan23 / 27Jan23	
Inv.508 13 Line 10323	1 - BACKFLOW PREVENTER VALVE Note:
23Jan23 / 27Jan23	

VACCUM/BELL

Inv.508 14 Line 10324	1 - BASEMENT: SURROUND SOUND - ROUGH-IN SPEAKER WIRES (X5) SUBWOOFER CABLE (X1) 6.5 INCH SPEAKER ROUGH-IN BRACKETS (X5) Note: LOCATIONS MAY VARY SLIGHTLY DUE TO JOIST LOCATIONS
23Jan23 / 27Jan23	
Inv.508 1 Line 10311	1 - CAT 6A LOCATION SKETCH. LOCATIONS MAY VARY SLIGHTLY DUE TO JOIST LOCATIONS (STD) Note:
23Jan23 / 27Jan23	



CONSTRUCTION SUMMARY

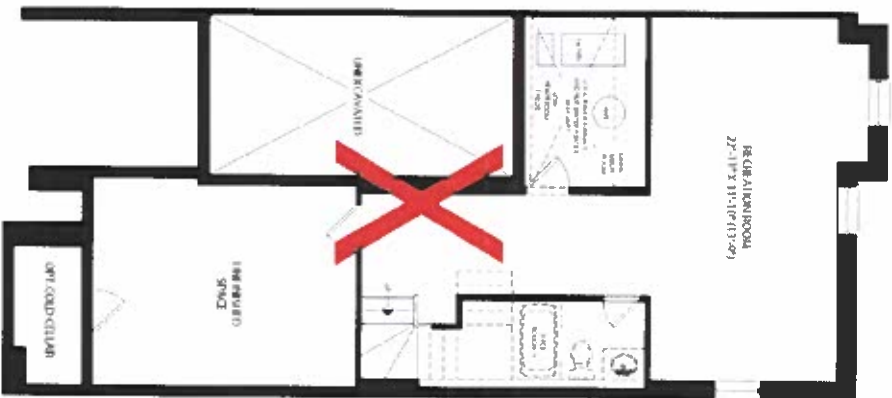
Joshua Creek - 203-1 SHERWOOD (TH-01) A END

Registere Plan Number: Municipal Address: Closing: 30-Oct-23

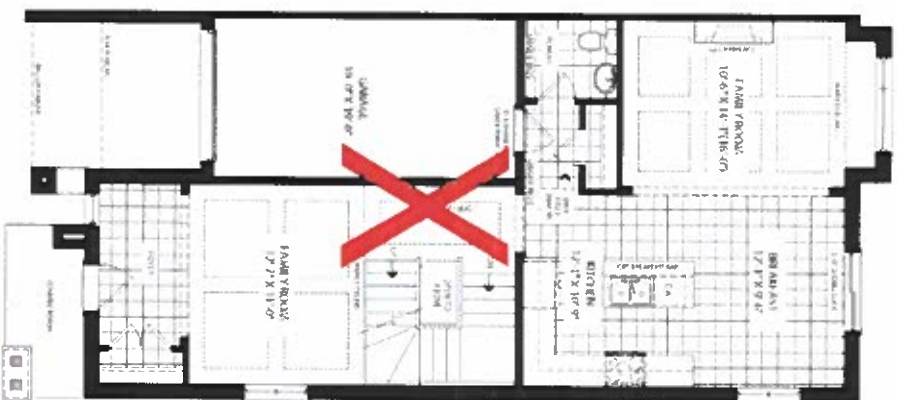
Inv.508	1 - FAMILY ROOM: INSTALL 1 1/4" ORANGE FLEX CONDUIT FOR FUTURE TV
8	
Line 10318	Note: LOCATIONS MAY VARY SLIGHTLY DUE TO JOIST LOCATIONS
23Jan23 / 27Jan23	

~~TH-1~~
~~SHEMPOD~~
ELEV A END 3,107 SQ.FT.

FINISHED BASEMENT ELEV A
END CONDITION



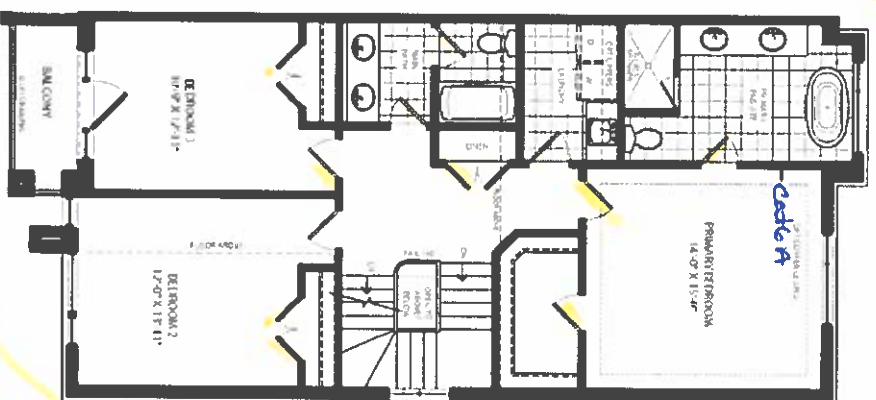
GROUND FLOOR ELEV A
END CONDITION



SECOND FLOOR ELEV A
END CONDITION



SECOND FLOOR ELEV A
END CONDITION CORNER UPGRADE



LOFT PLAN ELEV A
END CONDITION



JOSHUA CREEK
MONTAGE

All dimensions are approximate and subject to change without notice. The above floor plan is for informational purposes only. The actual floor plan may vary from the above floor plan. The above floor plan is for informational purposes only. The actual floor plan may vary from the above floor plan. The above floor plan is for informational purposes only. The actual floor plan may vary from the above floor plan.

VALERY
HOMES

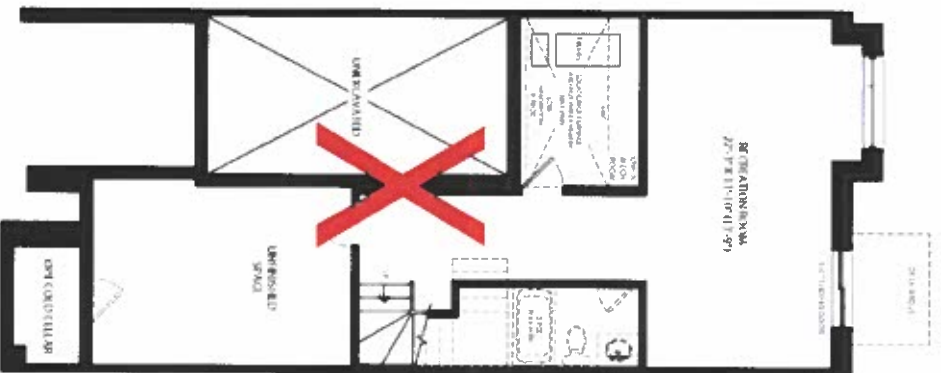
SCHEDULE "H"

Lot 203-1

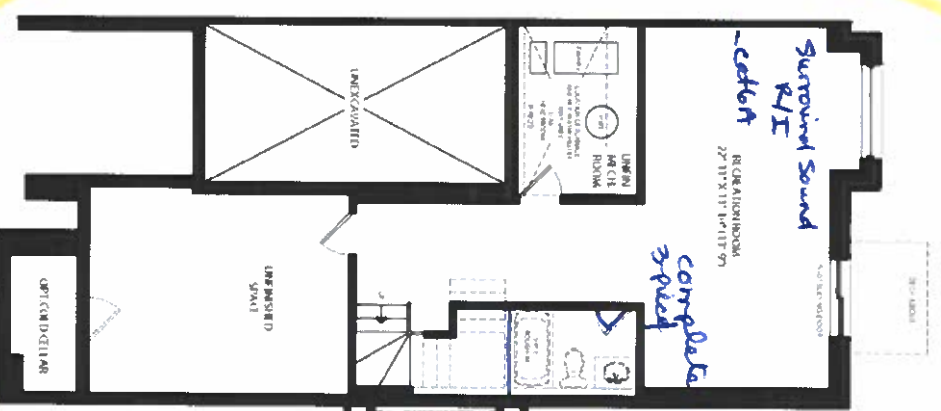
Jan 23, 23

TH-1
SHERWOOD
ELEV. A WOB 2,914 SQ. FT.

FINISH: BASEMENT ELEV. A
WOB



FINISHED BASEMENT ELEV. A
END CONDITION FOR

GROUND FLOOR ELEV A
WOB

GROUND FLOOR ELEV. A
END CONDITION WOB



SCHEDULE "H"

203-1 4

JOSHUA CREEK
MONTAGE

[illegible]

VALERY