

# CONSTRUCTION SUMMARY

**Joshua Creek - 202-4      EDGEMERE (TH-03) B**

Registere Plan Number:    Municipal Address:    Closing: **25-Oct-23**

## ELECTRICAL

Inv.485 2	1 - RECEPTACLES - EV STATION DEDICATED 220 VOLT RECEPTACLE
Line 9796	Note:
29Nov22 / 29Nov22	
Inv.485 3	1 - ELECTRICAL - ROUGH-IN FOR AC UNIT. INCLUDES BREAKER & LOW VOLTAGE WIRE
Line 9798	Note:
29Nov22 / 29Nov22	
Inv.485 4	6 - FAMILY ROOM: INSTALL SIX (6) POT LIGHT - 4" LED - INSULATED CEILINGS
Line 9802	Note: Location may vary slightly due to joist location
29Nov22 / 29Nov22	
Inv.485 5	4 - LIVING ROOM: INSTALL FOUR (4) POT LIGHT - 4" LED - INSULATED CEILINGS
Line 9803	Note: Location may vary slightly due to joist location
29Nov22 / 29Nov22	

## MISCELLANEOUS

Inv.485 6	1 - Purchaser has attended a Structural appointment at the Decor Centre & has DECLINED any additional upgrades and accepts and acknowledges that there will be no further structural changes/additions/deletions to be made upon signing
Line 9799	Note: Purchaser accepts & acknowledges that all upgrades are to be approved by construction before the invoice is accepted
29Nov22 / 29Nov22	

## VACCUM/BELL

Inv.485 1	1 - CAT 6A LOCATION SKETCH. LOCATIONS MAY VARY SLIGHTLY DUE TO JOIST LOCATIONS (STD)
Line 9795	Note:
29Nov22 / 29Nov22	

TH-3  
EDGEEMERE

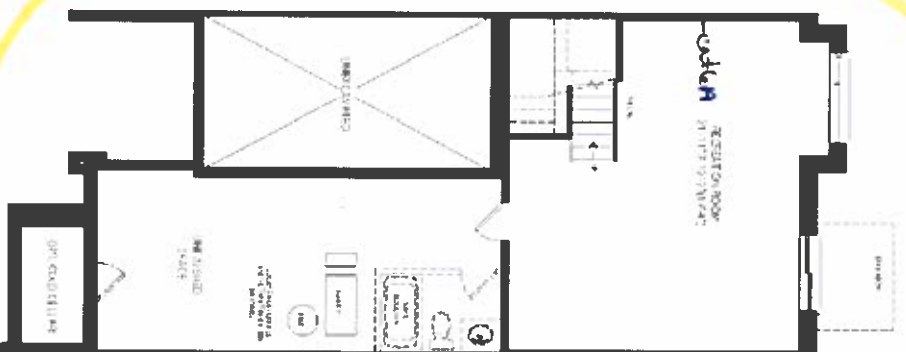
ELEV.B WOB 2,203 SQ.FT.

SCHEDULE "H"

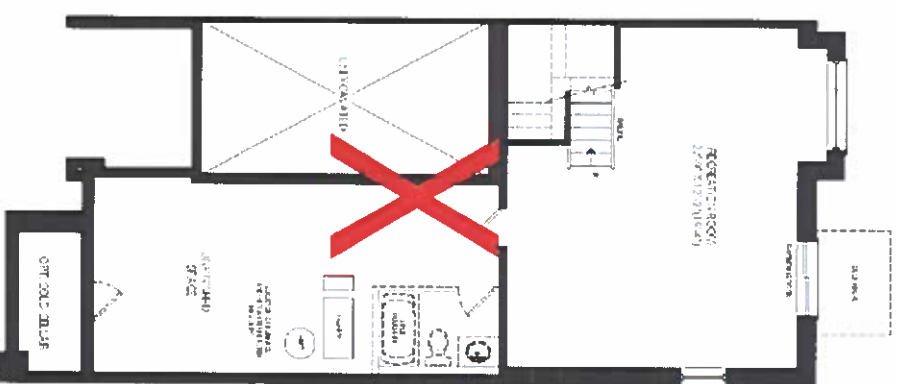
Lot 202-4 TB

Nov. 29, 22

FINISHED BASEMENT ELEV.B  
WOB

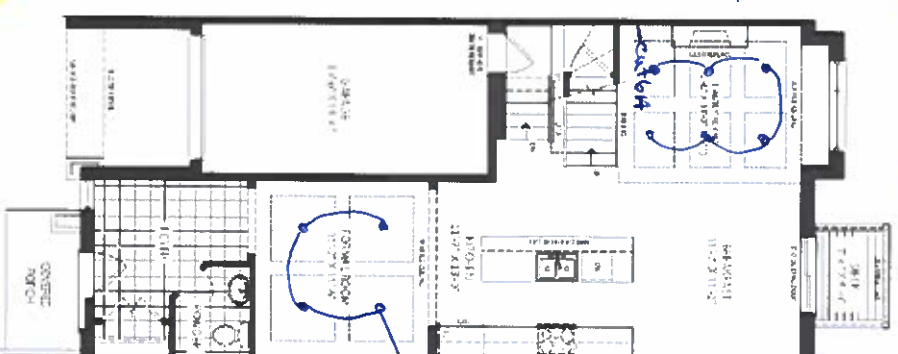


FINISHED BASEMENT ELEV.B  
END CONDITION WOB



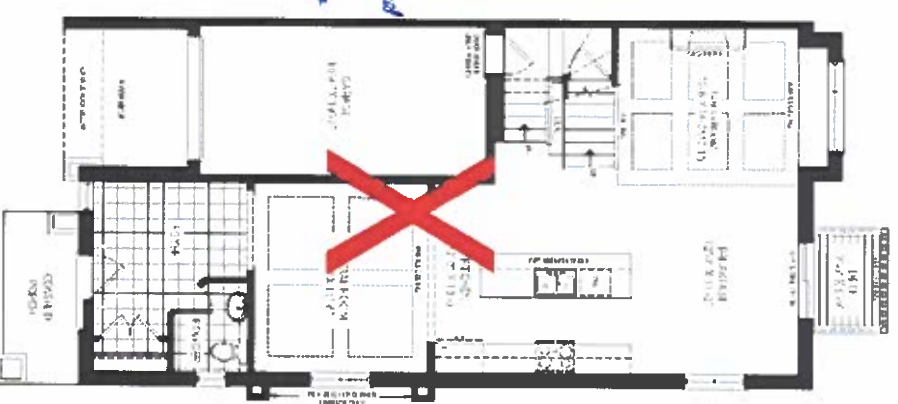
6 pots  
on separate  
switch.  
Keep  
standard  
light

GROUND FLOOR ELEV.B  
WOB



4 pots.  
Keep standard  
light  
(on separate  
switch)

GROUND FLOOR ELEV.B  
END CONDITION WOB



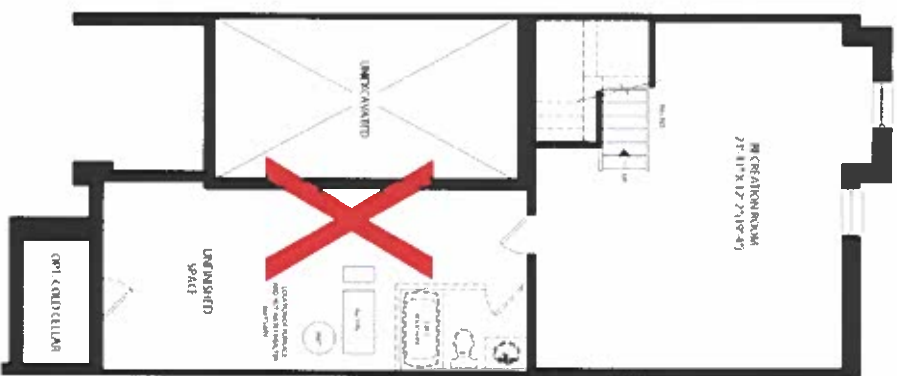
JOSHUA CREEK  
MONTAGE

ALL WORK SHALL BE DONE IN ACCORDANCE WITH THE 2018 INTERNATIONAL RESIDENTIAL WIREING CODE (IRC) AND THE 2018 INTERNATIONAL BUILDING CODE (IBC). THE WORK SHALL BE DONE IN ACCORDANCE WITH THE 2018 INTERNATIONAL RESIDENTIAL WIREING CODE (IRC) AND THE 2018 INTERNATIONAL BUILDING CODE (IBC). THE WORK SHALL BE DONE IN ACCORDANCE WITH THE 2018 INTERNATIONAL RESIDENTIAL WIREING CODE (IRC) AND THE 2018 INTERNATIONAL BUILDING CODE (IBC).

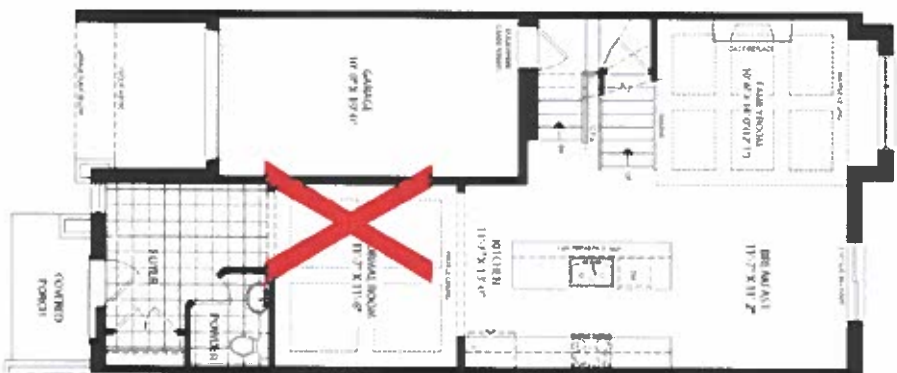
VALERY  
HOMES

~~THIS  
EXEMERE~~  
ELEV.B 2,903 SQ. FT.

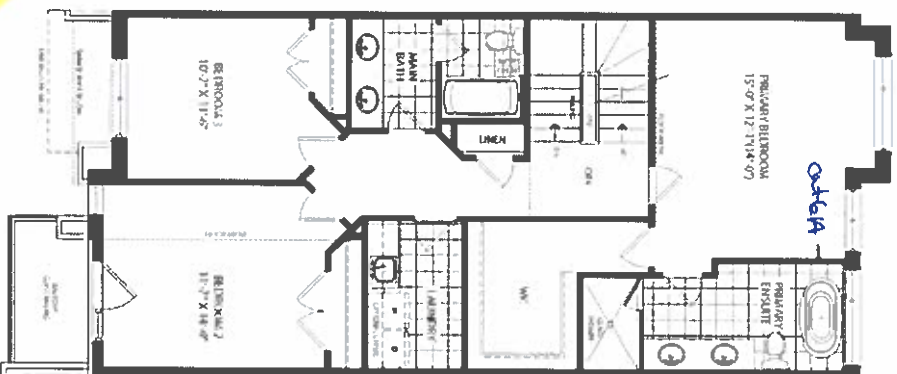
FINISHED BASEMENT ELEV. B



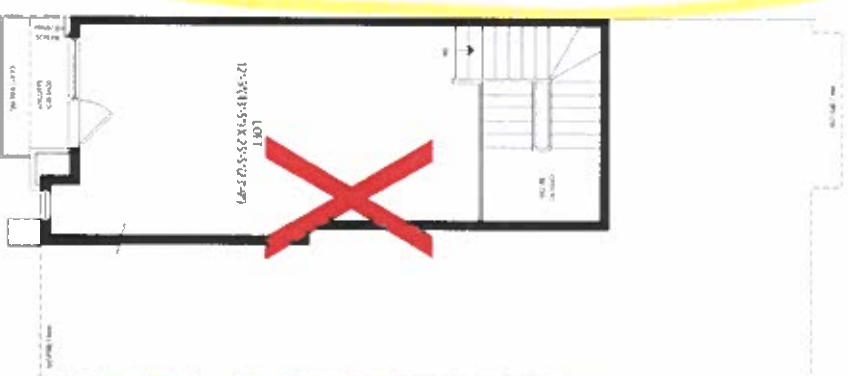
GROUND FLOOR ELEV. B



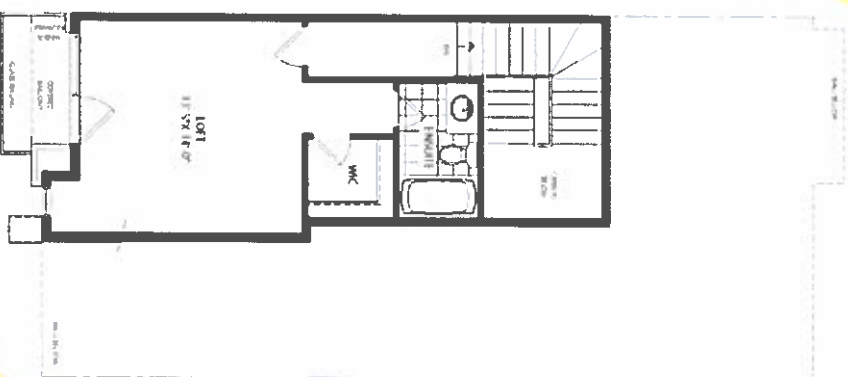
SECOND FLOOR ELEV. B



LOFT PLAN ELEV. B



OPT LOFT PLAN ELEV. B



Lot 202-4  
Nov. 29, 2022

SCHEDULE "H"

JOSHUA CREEK  
MONTAGE

ALL DIMENSIONS ARE SUBJECT TO NORMAL CONSTRUCTION VARIANCES. DIMENSIONS MAY VARY FROM SHOWN. DIMENSIONS ARE SUBJECT TO CHANGES WITHOUT NOTICE. DRAWINGS ARE FOR INFORMATION ONLY. NOT TO BE USED FOR CONSTRUCTION. ALL DIMENSIONS ARE TO FACE UNLESS OTHERWISE NOTED. CONTACT SALES FOR MORE INFORMATION. © 2022 J. C. CREEK. ALL RIGHTS RESERVED. EXEMERE. 11/22/22

VALERY  
HOMES