

# CONSTRUCTION SUMMARY

**Joshua Creek - 90      CASTLEFIELD (42-04) B**  
 Registere Plan Number:    Municipal Address:    Closing: 7-Sep-23

## CEILING

Inv.451 8	1 - 2ND FLOOR: SMOOTH CEILING, SECOND FLOOR
Line 9205	Note:
18Aug22 / 6Sep22	

## ELECTRICAL

Inv.451 6	1 - KITCHEN: INSTALL RECEPTACLES - ADDITIONAL 15 AMP 120 VOLT RECEPTACLE FOR GAS STOVE
Line 9074	Note:
18Aug22 / 6Sep22	

Inv.451 7	1 - ELECTRICAL - ROUGH-IN FOR DEDICATED 30 - 40 AMP 220 V BUILT-IN WALL OVEN OR COOK TOP
Line 9075	Note:
18Aug22 / 6Sep22	

Inv.451 2	1 - ELECTRICAL - ROUGH-IN FOR AC UNIT. INCLUDES BREAKER & LOW VOLTAGE WIRE
Line 9068	Note:
18Aug22 / 6Sep22	

## HVAC

Inv.451 1	1 - CAT 6A LOCATION SKETCH. LOCATIONS MAY VARY SLIGHTLY DUE TO JOIST LOCATIONS
Line 9066	Note:
18Aug22 / 6Sep22	

Inv.451 5	1 - KITCHEN: INSTALL GAS PIPING AND OTHER - GAS LINE R/I FOR MAIN FLOOR - STOVE
Line 9073	Note:
18Aug22 / 6Sep22	

## MISCELLANEOUS

Inv.451 10	1 - Purchaser has attended a Structural appointment at the Decor Centre & has DECLINED any additional upgrades and accepts and acknowledges that there will be no further structural changes/additions/deletions to be made upon signing
Line 9232	Note:
18Aug22 / 6Sep22	

## PLUMBING

Inv.451 3	1 - EXTRA ROUGH-IN LINE FOR FRIDGE ICE MAKER WITH SHUT-OFF
Line 9070	Note:
18Aug22 / 6Sep22	

## VACCUM/BELL

Inv.451 4	1 - CENTRAL VACUUM - CENTRAL VAC PIPING COMPLETE ROUGH-IN TO GARAGE - TWO OUTLETS PER FLOOR AND ONE OUTLET IN BASEMENT R/I ONLY
Line 9072	Note:
18Aug22 / 6Sep22	

## WINDOWS

Inv.451 9	5 - BASEMENT: BASEMENT WINDOW - ENLARGE FIVE (5) STANDARD WINDOW TO- 36 X 30
Line 9206	Note:
18Aug22 / 6Sep22	

Lot 90

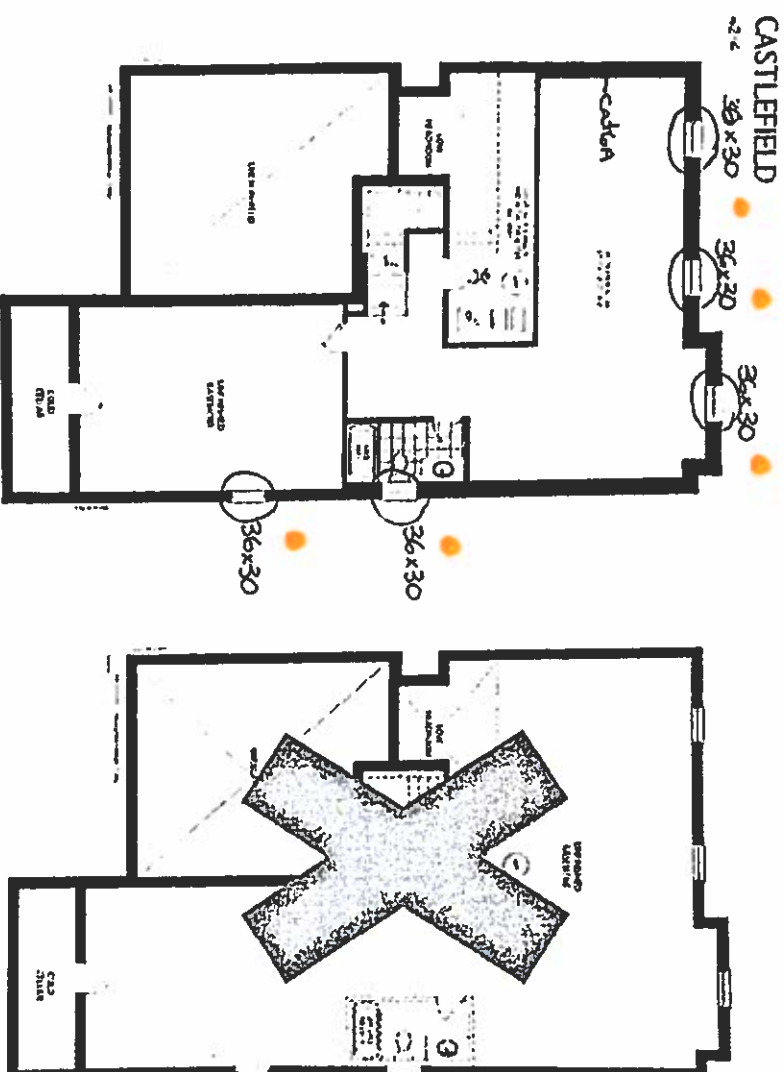
RECEIVED  
JAN 18 2021



PARTIAL UNFINISHED BASEMENT ELEV. A, B & C  
WITH ONE ENTRY STAIR



PARTIAL UNFINISHED BASEMENT ELEV. A, B & C  
WITH ONE ENTRY STAIR



FINISHED BASEMENT ELEV. A, B & C

UNFINISHED BASEMENT ELEV. A, B & C

JOSHUA CREEK  
MONTAGE



VÄLÉRY