

# CONSTRUCTION SUMMARY

**Joshua Creek - 77 - ALDERCREST (42-02) A**

Registere Plan Number:    Municipal Address:    Closing: **27-Oct-23**

## BONUS

Inv.497 36 Line 10175  27Dec22 / 2Jan24	1 - BONUS PACKAGE: \$5,000.00 WORTH OF UPGRADES FROM VALERY HOMES DÉCOR CENTRE IS BEING APPLIED TOWARD THE STRUCTURAL APPOINTMENT.  Note:
---	---

## CEILING

Inv.497 9 Line 10074  27Dec22 / 2Jan24	1 - SECOND FLOOR: SMOOTH CEILING THROUGHOUT SECOND FLOOR  Note:
--	---

Inv.497 10 Line 10075  27Dec22 / 2Jan24	1 - BASEMENT: SMOOTH CEILING THROUGHOUT BASEMENT  Note:
---	---

## ELECTRICAL

Inv.497 5 Line 10070  27Dec22 / 2Jan24	1 - KITCHEN: INSTALL ELECTRICAL - ROUGH-IN FOR 40 AMP 220 V BUILT-IN WALL OVEN, COOK TOP OR SPEED OVEN  Note:
--	---

Inv.497 6 Line 10071  27Dec22 / 2Jan24	1 - KITCHEN: APPLIANCE - RELOCATE STANDARD APPLIANCE. MOVE FRIDGE. SEE REVISED KITCHEN PLAN  Note:
--	--

Inv.497 19 Line 10084  27Dec22 / 2Jan24	1 - EXTERIOR: COACH LIGHT - ADDITIONAL EXTERIOR COACH LIGHT. TO GO ON OTHER SIDE OF FRONT DOOR, SO THAT THERE ARE 2 COACH LIGHTS TOTAL BESIDE BOTH THE FRONT DOORS  Note:
---	---

Inv.497 20 Line 10085  27Dec22 / 2Jan24	1 - EXTERIOR FRONT: INSTALL ONE (1) POT LIGHT - 4" LED - EXTERIOR SOFFITS  Note: Location may vary slightly
---	---

Inv.497 21 Line 10086  27Dec22 / 2Jan24	1 - EXTERIOR REAR OF HOUSE: INSTALL ONE (1) POT LIGHT - 4" LED - EXTERIOR SOFFITS  Note: Location may vary slightly
---	---

Inv.497 2 Line 10067  27Dec22 / 2Jan24	1 - KITCHEN: INSTALL RECEPTACLES - ADDITIONAL 15 AMP 120 VOLT RECEPTACLE (NON-DEDICATED) FOR GAS STOVE  Note:
--	---

Inv.497 24 Line 10089  27Dec22 / 2Jan24	1 - ELECTRICAL - DEDICATED 15 AMP 120 V FOR FUTURE TV ABOVE FIREPLACE  Note:
---	--

Inv.497 25 Line 10090  27Dec22 / 2Jan24	1 - PRIMARY ENSUITE: CEILING LIGHT ROUGH IN - FOR 1 CEILING LIGHT - ON SEPARATE SWITCH (DOES NOT INCLUDE FIXTURE)  Note: Location may vary slightly due to joist location
---	---

# CONSTRUCTION SUMMARY

**Joshua Creek - 77      ALDERCREST (42-02) A**

Registere Plan Number:    Municipal Address:    Closing: **27-Oct-23**

Inv.497 26 Line 10091	<b>1 - KITCHEN: INSTALL CABINET LIGHTING - UNDERMOUNT T-5 LED VALANCE LIGHT. LIGHT ONLY</b>  Note: Valance must be purchased at the colour appointment to cover lights
27Dec22 / 2Jan24	
Inv.497 28 Line 10093	<b>1 - ELECTRICAL - ROUGH-IN FOR AC UNIT. INCLUDES BREAKER &amp; LOW VOLTAGE WIRE</b>  Note:
27Dec22 / 2Jan24	
Inv.497 29 Line 10096	<b>1 - FOYER: REINFORCE FIXTURE, IN CENTRE OF FOYER, FOR FUTURE CHANDELIER. MAXIMUM 50 POUNDS</b>  Note:
27Dec22 / 2Jan24	
Inv.497 30 Line 10169	<b>1 - FAMILY ROOM: INSTALL ONE (1) POT LIGHT - 4" LED NON-INSULATED CEILINGS, ON SEPARATE SWITCH</b>  Note: Location may vary slightly due to joist location
27Dec22 / 2Jan24	
Inv.497 31 Line 10170	<b>1 - BREAKFAST AREA: INSTALL ONE (1) POT LIGHT - 4" LED NON-INSULATED CEILINGS, ON SEPARATE SWITCH</b>  Note: Location may vary slightly due to joist location
27Dec22 / 2Jan24	
Inv.497 32 Line 10171	<b>1 - DEN: INSTALL ONE (1) POT LIGHT - 4" LED NON-INSULATED CEILINGS, ON SEPARATE SWITCH</b>  Note: Location may vary slightly due to joist location
27Dec22 / 2Jan24	
Inv.497 33 Line 10172	<b>1 - MAIN HALL: INSTALL ONE (1) POT LIGHT - 4" LED NON-INSULATED CEILINGS, ON SEPARATE SWITCH</b>  Note: Location may vary slightly due to joist location
27Dec22 / 2Jan24	
Inv.497 34 Line 10173	<b>1 - MUDROOM: INSTALL ONE (1) POT LIGHT - 4" LED NON-INSULATED CEILINGS, ON SEPARATE SWITCH</b>  Note: Location may vary slightly due to joist location
27Dec22 / 2Jan24	
Inv.497 35 Line 10174	<b>1 - DINING ROOM: INSTALL ONE (1) POT LIGHT - 4" LED NON-INSULATED CEILINGS</b>  Note: Location may vary slightly due to joist location
27Dec22 / 2Jan24	

## FIREPLACE

Inv.497 27 Line 10092	<b>1 - FAMILY ROOM: INSTALL FIREPLACE - WOOD MANTEL - PF - 52 - PAINT GRADE - MINIMUM WALL WIDTH 66 INCH</b>  Note:
27Dec22 / 2Jan24	

## HVAC

Inv.497 3 Line 10068	<b>1 - KITCHEN: INSTALL GAS PIPING AND OTHER - GAS LINE R/I FOR MAIN FLOOR - STOVE</b>  Note:
27Dec22 / 2Jan24	

## INTERIOR DOOR & TRIM



Registree Plan Number:    Municipal Address:    Closing: **27-Oct-23**

**CONSTRUCTION SUMMARY**

**Joshua Creek - 77      ALDERCREST (42-02) A**

Registere Plan Number:    Municipal Address:    Closing: **27-Oct-23**

Inv.497 13 Line 10078  27Dec22 / 2Jan24	<b>1 - BASEMENT: LAUNDRY: INSTALL TILES IN AREA WHERE LAUNDRY ROUGH-IN WILL GO. AREA TO BE 6' X 5' IN STANDARD TILE</b>  Note:
---	--

**VACCUM/BELL**

Inv.497 22 Line 10087  27Dec22 / 2Jan24	<b>1 - ATTIC: INSTALL 1 1 /4" ORANGE FLEX CONDUIT FROM ATTIC TO HYDRO PANEL</b>  Note: LOCATIONS MAY VARY SLIGHTLY DUE TO JOIST LOCATIONS
---	---

Inv.497 23 Line 10088  27Dec22 / 2Jan24	<b>1 - FAMILY ROOM: INSTALL 1 1 /4" ORANGE FLEX CONDUIT ABOVE FIREPLACE FOR FUTURE TV</b>  Note: LOCATIONS MAY VARY SLIGHTLY DUE TO JOIST LOCATIONS
---	---

Inv.497 1 Line 10066  27Dec22 / 2Jan24	<b>1 - CAT 6A LOCATION SKETCH. LOCATIONS MAY VARY SLIGHTLY DUE TO JOIST LOCATIONS (STD)</b>  Note:
--	--

**WINDOWS**

Inv.497 8 Line 10073  27Dec22 / 2Jan24	<b>2 - BASEMENT: BASEMENT WINDOW - ENLARGE TWO (2) STANDARD WINDOW TO- 36 X 30</b>  Note: MAY REQUIRE A WINDOW WELL
--	---

1 pot on separate switch

conduit  
conduit

1 pot on separate switch

1 pot on separate switch

Reinforce Std. light for future chandelier centered in foyer area

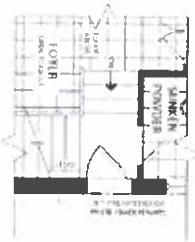
1 pot on separate switch

Wallpaper  
Fridge

1 pot on separate switch

1 pot on separate switch

\* See Revised Floor Plan for Kitchen



OPTIONAL GROUND FLOOR ELEV. A, B & C



PARTIAL GROUND FLOOR ELEV. C

GROUND FLOOR ELEV. A & B



Additional coat light (two total)

JOSHUA CREEK  
MONTAGE

All dimensions are approximate and subject to change. Dimensions may vary due to site conditions. All dimensions are approximate and subject to change. All dimensions are approximate and subject to change.

VALERY  
HOMES

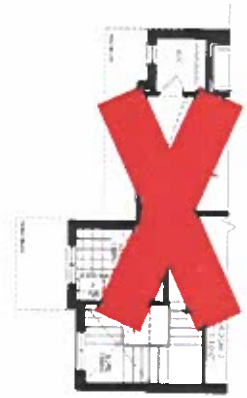
Lot 77 (b) (d)  
Dec. 27, 22

ALDERCREST

42-2



OPTIONAL SECOND FLOOR ELEV A  
5 BEDROOM



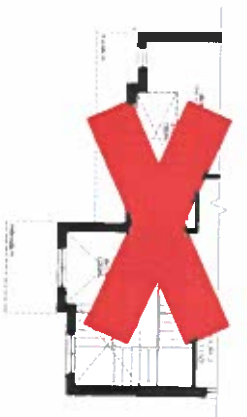
PARTIAL OPTIONAL SECOND FLOOR ELEV B  
5 BEDROOM



PARTIAL OPTIONAL SECOND FLOOR ELEV C  
5 BEDROOM



SECOND FLOOR ELEV A



PARTIAL SECOND FLOOR ELEV B



PARTIAL SECOND FLOOR ELEV C

1 pot light in  
soffit

Rough-in light on  
separate switch

20177 (4) (A)  
Dec. 27, 22

JOSHUA CREEK

MONTAGE

ALL INFORMATION CONTAINED HEREIN IS UNCLASSIFIED EXCEPT WHERE SHOWN OTHERWISE. IT IS THE POLICY OF THE NATIONAL ARCHIVES TO MAKE ALL INFORMATION CONTAINED HEREIN AVAILABLE TO THE PUBLIC. THIS INFORMATION IS BEING RELEASED TO YOU UNDER THE NATIONAL ARCHIVES' OPEN GLASS POLICY. FOR MORE INFORMATION, VISIT US AT [www.archives.gov/open-glass](http://www.archives.gov/open-glass).

VALERY  
HOMES



## 42-2



All differences significant ( $P < 0.05$ ) are denoted with different letters. The data were analyzed by one-way ANOVA. Some specifications (test diets and vitamin concentrations) are subject to clarification. The authors have not included the data of the various studies. The data are subject to clarification. All concentrations are given in mg/kg of feed. A complete list of the data is available on request.

# VALERY HOMES

Dec. 27, 22

# ALDERCREST

42-2

SCHEDULE "H"

Oct 77  
Dec. 27, 22

Exterior Rot  
in Soffit

ELEVATION A 4,020 SQ.FT.

INCLUDES 698 SQ.FT OF FINISHED BASEMENT



ELEVATION B 4,018 SQ.FT.

INCLUDES 698 SQ.FT OF FINISHED BASEMENT



ELEVATION C 4,024 SQ.FT.

INCLUDES 698 SQ.FT OF FINISHED BASEMENT



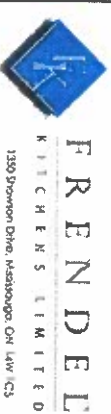
JOSHUA CREEK

MONTAGE

RED MARKINGS ARE CONCENTRATED AND SUBJECT TO THE ARCHITECT'S REVIEW. ALTHOUGH THE ARCHITECT HAS REVIEWED THE MARKINGS, THEY ARE NOT A GUARANTEE OF ACCURACY. THE ARCHITECT HAS REVIEWED THE MARKINGS AND HAS FOUND THEM TO BE ACCURATE. THE ARCHITECT HAS REVIEWED THE MARKINGS AND HAS FOUND THEM TO BE ACCURATE. THE ARCHITECT HAS REVIEWED THE MARKINGS AND HAS FOUND THEM TO BE ACCURATE.

VALERY  
HOMES





VALERY HOMES  
JOSHUA CREEK  
LOT 77

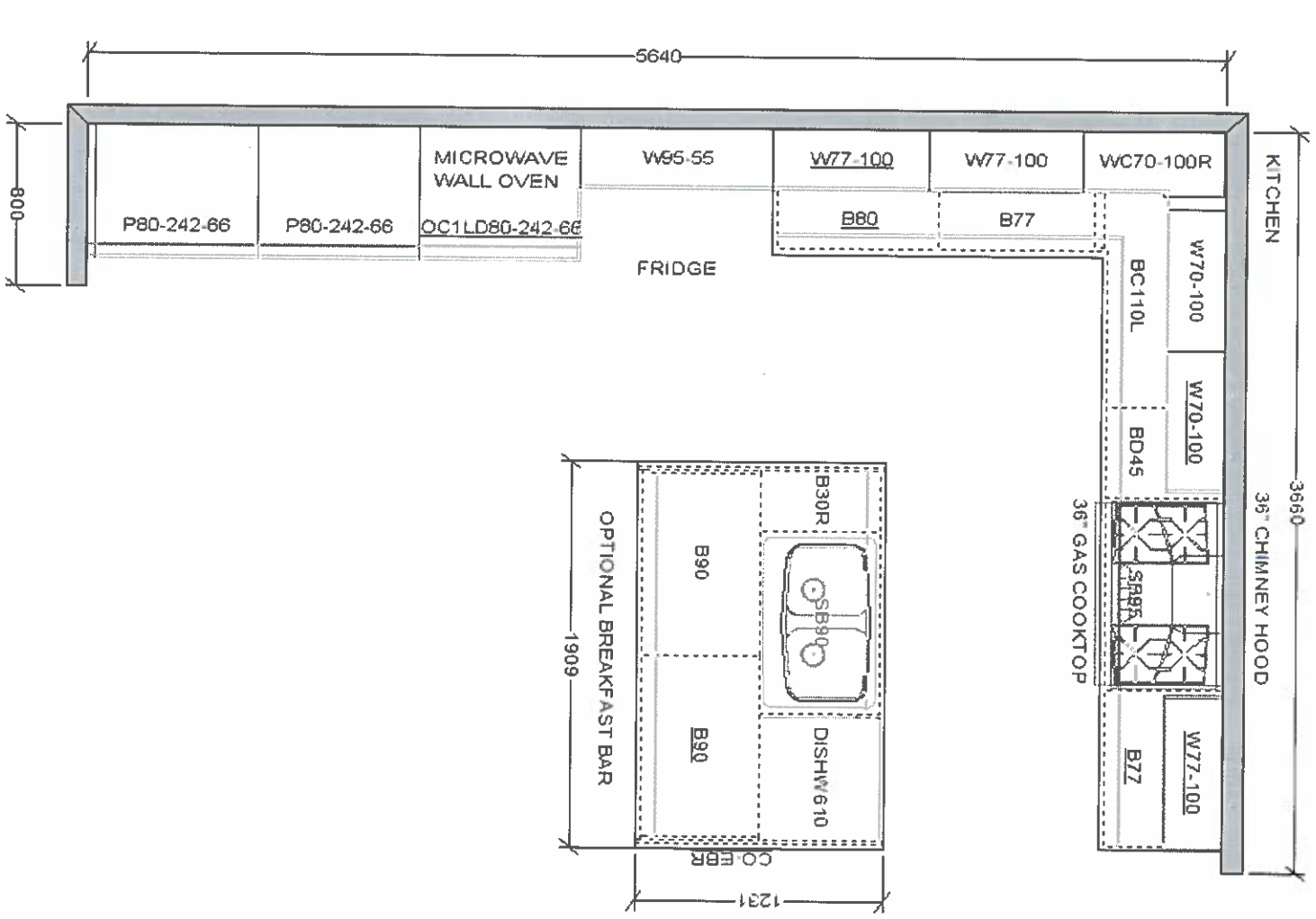
\* Not Final  
Kitchen Drafting  
For electrical &  
Plumbing purposes  
only.

Jan 9, 23

Drawn By:  
Date: January 9, 2023  
Scale: Not To Scale

Approved By Builder:



Date:



This sketch is for DESIGN PURPOSES ONLY – It is not meant to be an exact rendition.

VALERY HOMES  
JOSHUA CREEK  
LOT 77

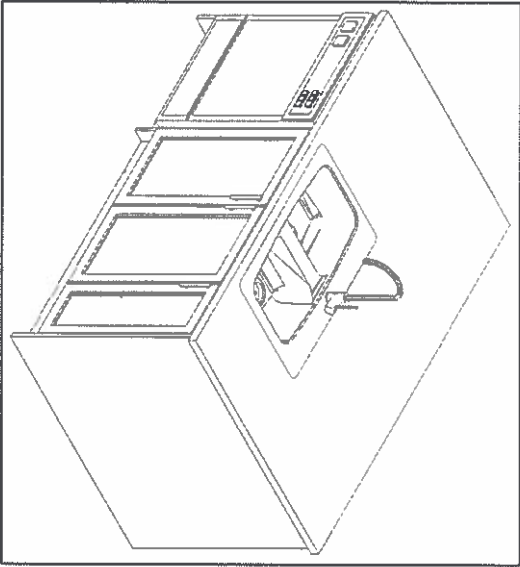
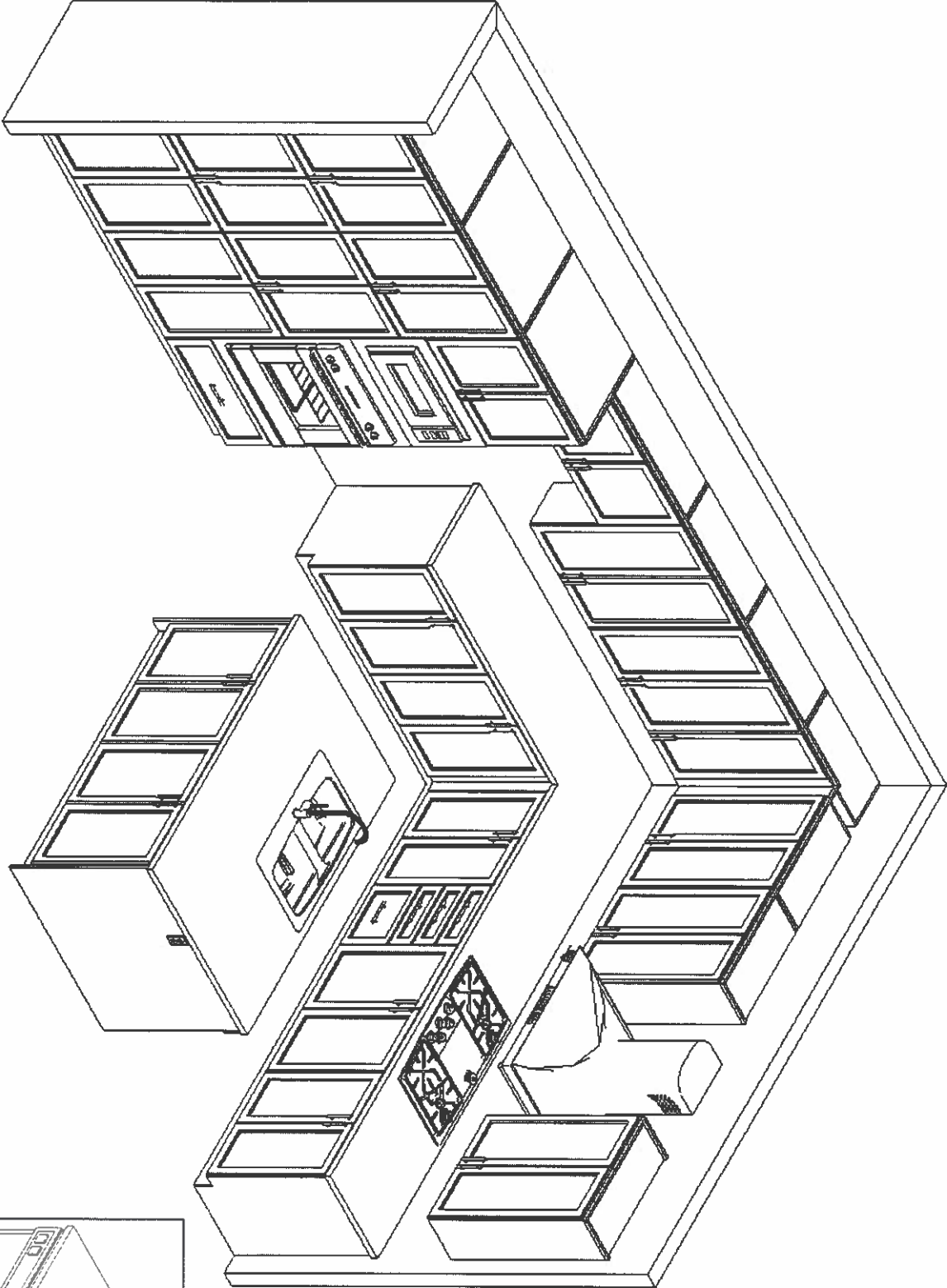
\* Not Final  
Kitchen Drawing  
For electrical &  
plumbing purposes  
only

  
Jan 9, 23

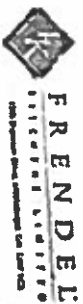
Drawn By:  
Date: January 9, 2023  
Scale: Not To Scale

Approved By Builder:

Date:



This sketch is for DESIGN PURPOSES ONLY – It is not meant to be an exact rendition.



VALERY HOMES  
JOSHUA CREEK  
LOT 77

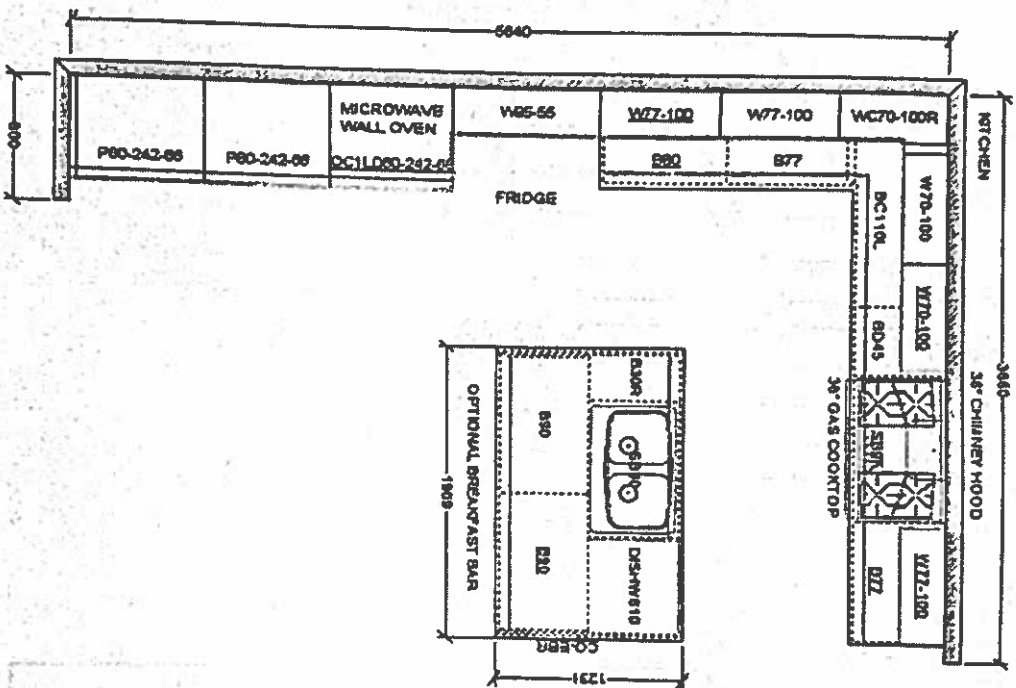
\* Not Final  
Kitchen Drawing  
For electrical &  
plumbing purposes  
only.

Jan 9, 23

Drawn By:  
Date: January 9, 2023  
Scale: Not To Scale

Approved By Builder:

Date:




This sketch is for DESIGN PURPOSES ONLY - It is not meant to be an exact rendition.



VALERY HOMES  
JOSHUA CREEK  
LOT 77

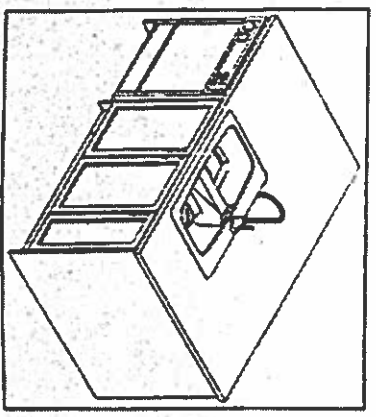
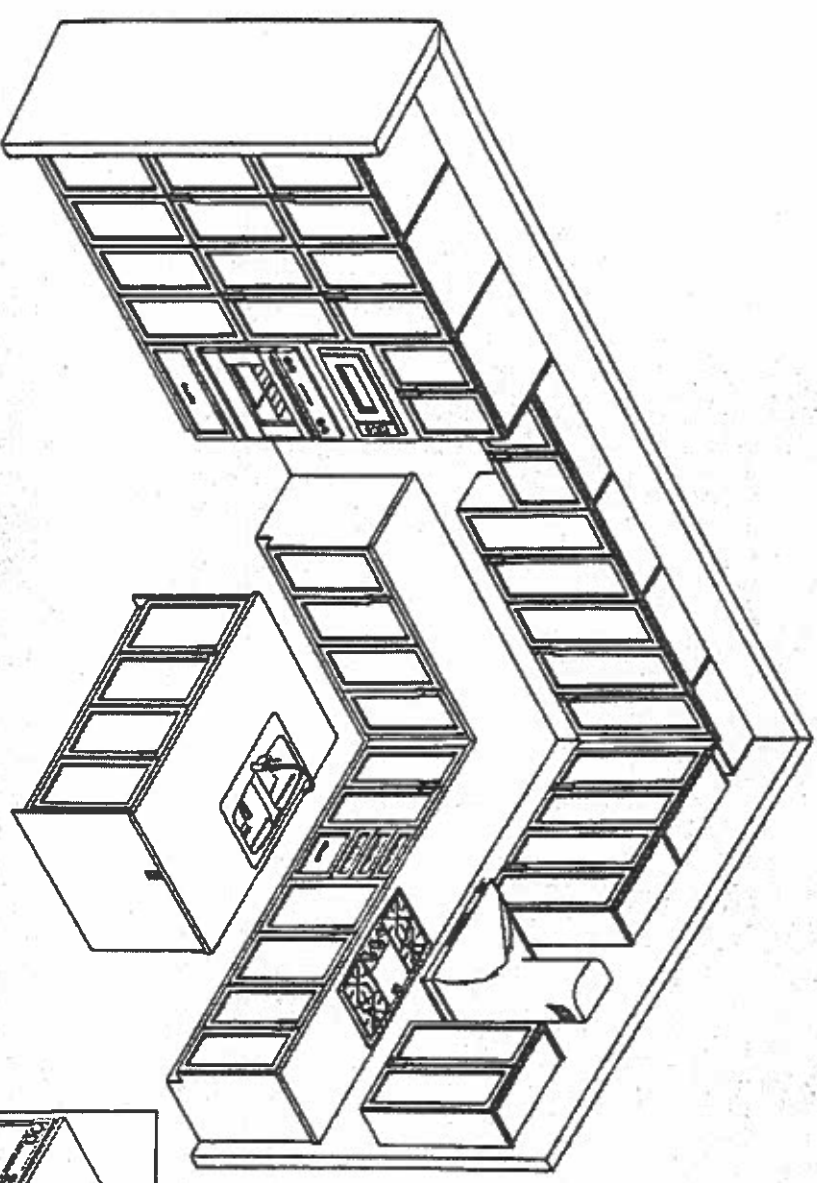
\* Not Final  
Kitchen Drawing  
For electrical &  
plumbing purposes  
only.

  
Jan 9, 23

Drawn By:  
Date: January 9, 2023  
Scale: Not To Scale

Approved By Builder:

Date:



This sketch is for DESIGN PURPOSES ONLY – It is not meant to be an exact rendition.