

CONSTRUCTION SUMMARY

Joshua Creek - 223-5 EDGEMERE (TH-03) B

Registere Plan Number: Municipal Address: Closing: **13-Sep-23**

BONUS

Inv.471 20	1 - BONUS PACKAGE: \$5,000.00 WORTH OF UPGRADES FROM VALERY HOMES DÉCOR CENTRE IS BEING APPLIED TOWARD THE STRUCTURAL APPOINTMENT
Line 9596	Note:
21Oct22 / 21Oct22	

ELECTRICAL

Inv.471 17	1 - PRIMARY ENSUITE: HEATED FLOOR - (PRICE PER SQ FEET)
Line 9594	Note:
21Oct22 / 21Oct22	

Inv.471 4	6 - FAMILY ROOM: INSTALL SIX (6) POT LIGHT - 4" LED NON-INSULATED CEILINGS. ON SEPARATE SWITCH, KEEP STANDARD LIGHT. LOCATIONS MAY VARY SLIGHTLY DUE TO JOIST LOCATIONS
Line 9581	Note:
21Oct22 / 21Oct22	

Inv.471 5	4 - FORMAL ROOM: INSTALL FOUR (4) POT LIGHT - 4" LED NON-INSULATED CEILINGS. ON SEPARATE SWITCH, KEEP STANDARD LIGHT. LOCATIONS MAY VARY SLIGHTLY DUE TO JOIST LOCATIONS
Line 9582	Note:
21Oct22 / 21Oct22	

Inv.471 6	4 - BREAKFAST AREA: INSTALL FOUR (4) POT LIGHT - 4" LED NON-INSULATED CEILINGS. ON SEPARATE SWITCH, CENTRE STANDARD LIGHT. LOCATIONS MAY VARY SLIGHTLY DUE TO JOIST LOCATIONS
Line 9583	Note:
21Oct22 / 21Oct22	

Inv.471 7	4 - KITCHEN: INSTALL FOUR (4) POT LIGHT - 4" LED NON-INSULATED CEILINGS. ON SEPARATE SWITCH, KEEP STANDARD LIGHT. LOCATIONS MAY VARY SLIGHTLY DUE TO JOIST LOCATIONS
Line 9584	Note:
21Oct22 / 21Oct22	

Inv.471 8	1 - KITCHEN: CEILING FIXTURE - RELOCATE STANDARD CEILING FIXTURE, OVER ISLAND. LOCATIONS MAY VARY SLIGHTLY DUE TO JOIST LOCATIONS
Line 9585	Note:
21Oct22 / 21Oct22	

Inv.471 9	2 - KITCHEN: INSTALL TWO (2) CEILING LIGHT ROUGH IN - FOR 1 CEILING LIGHT, ON EXISTING SWITCH (DOES NOT INCLUDE FIXTURE), ABOVE ISLAND. LOCATIONS MAY VARY SLIGHTLY DUE TO JOIST LOCATIONS
Line 9586	Note:
21Oct22 / 21Oct22	

Inv.471 10	1 - GARAGE: INSTALL RECEPTACLES - EV STATION DEDICATED 240 VOLT RECEPTACLE
Line 9587	Note:
21Oct22 / 21Oct22	

Inv.471 12	1 - KITCHEN: INSTALL CABINET LIGHTING - UNDERMOUNT T-5 LED VALANCE LIGHT.
VALANCE MUST BE PURCHASED AT THE TIME OF COLOURS	
Line 9589	Note:
21Oct22 / 21Oct22	

GARAGE DOORS

CONSTRUCTION SUMMARY

Joshua Creek - 223-5 EDGEMERE (TH-03) B

Registere Plan Number: Municipal Address: Closing: **13-Sep-23**

Inv.471 16 Line 9593 21Oct22 / 21Oct22	1 - GARAGE: OVERHEAD GARAGE DOOR - LIFTMASTER 8355W - 1/2 HP BELT - INCLUDES 2 REMOTES & 1 KEYPAD - 8 FT Note:
---	--

HVAC

Inv.471 11 Line 9588 21Oct22 / 21Oct22	1 - AIR CONDITIONER - GSX 14 SEER R - 410A - 2.5 TON Note:
---	--

INTERIOR DOORS & TRIM

Inv.471 3 Line 9580 21Oct22 / 21Oct22	13 - SECOND FLOOR: INTERIOR DOOR & TRIM - EXTENDED HEIGHT DOOR 96 INCH - 2ND FLOOR, UPGRADE FROM STD. 84" Note:
--	---

MISCELLANEOUS

Inv.471 21 Line 9597 21Oct22 / 21Oct22	1 - Purchaser has attended a Structural appointment at the Decor Centre & has DECLINED any additional upgrades and accepts and acknowledges that there will be no further structural changes/additions/deletions to be made upon signing Note: Purchaser acknowledges & accepts that all upgrades are to be approved by construction before the invoice is accepted.
---	--

PLUMBING

Inv.471 18 Line 9598 21Oct22 / 21Oct22	3 - PRIMARY ENSUITE - MAIN BATH - LOFT: INSTALL 3 HAND SHOWERS IN 3 WASHROOMS MOEN: POSI-TEMP TUB / SHOWER FAUCET WITH 3 FUNCTION TRANSFER VALVE / TRIM AND SLIDE BAR SHOWER TL183EP/ U361CI/ UT2721/ 3669EP/ A725/ 62320 CHROME Note:
---	--

Inv.471 19 Line 9599 21Oct22 / 21Oct22	3 - PRIMARY ENSUITE - MAIN BATH - LOFT: ADD ADDITIONAL PLUMBING WHEN ADDING HAND-HELD SHOWERS Note:
---	---

Inv.471 13 Line 9590 21Oct22 / 21Oct22	1 - BASEMENT: <u>INSTALL 3 PIECE BATHROOM</u> - EXTRA 3-PIECE FINISHED BATH, COMPLETE Note:
---	---

Inv.471 14 Line 9591 21Oct22 / 21Oct22	1 - KITCHEN: INSTALL EXTRA ROUGH-IN LINE FOR FRIDGE ICE MAKER WITH SHUT-OFF Note:
---	---

Inv.471 15 Line 9592 21Oct22 / 21Oct22	1 - BACKFLOW PREVENTER VALVE Note:
---	--

VACCUM/BELL

Joshua Creek - 223-5 EDGEMERE (TH-03) B

Registere Plan Number: Municipal Address: Closing: 13-Sep-23

Inv.471	1 - CAT 6A LOCATION SKETCH. LOCATIONS MAY VARY SLIGHTLY DUE TO JOIST
1	LOCATIONS
Line 9578	Note:
21Oct22 / 21Oct22	

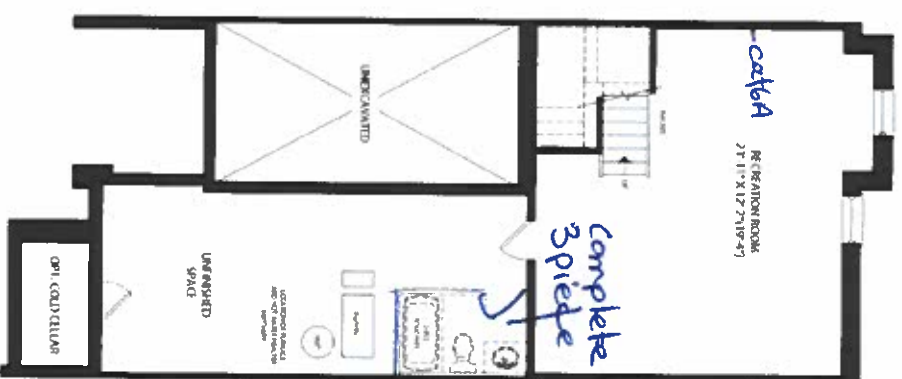
WINDOWS

Inv.471	2 - BASEMENT: BASEMENT WINDOW - ENLARGE TWO (2) STANDARD WINDOW TO- 36 X 30
2	
Line 9579	Note:
21Oct22 / 21Oct22	

TH-3
EDGE-MERE
ELEV. B. 2,903 SQ. FT.

ELEV.B 2903 SQ.FT.

FINISHED BASEMENT ELEV 3



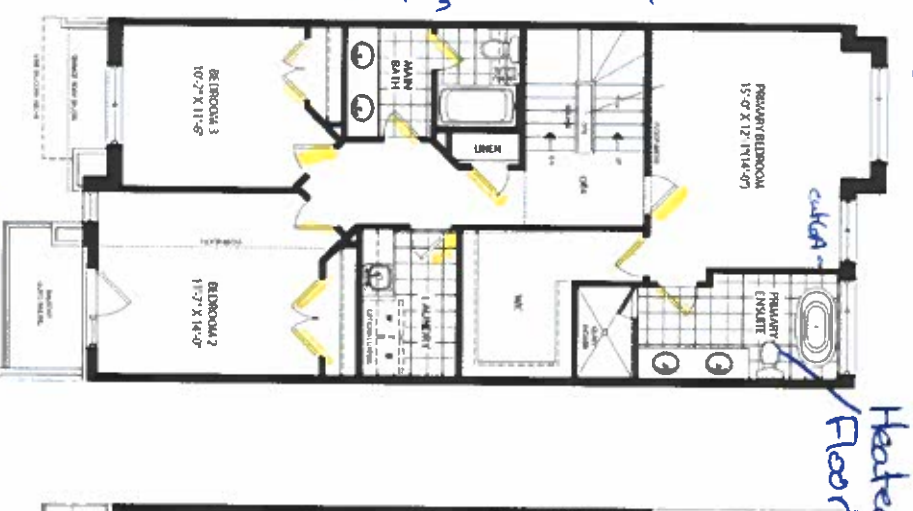
MONTAGE

GROUND FLOOR ELEV B



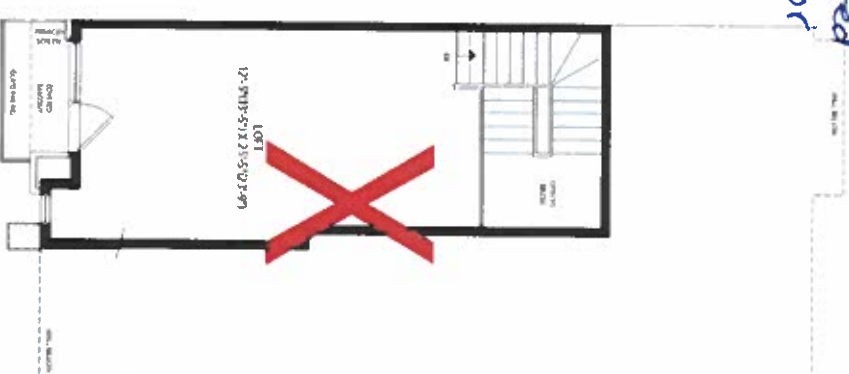
13 extended height
Doors

SECOND FLOOR ELEV B

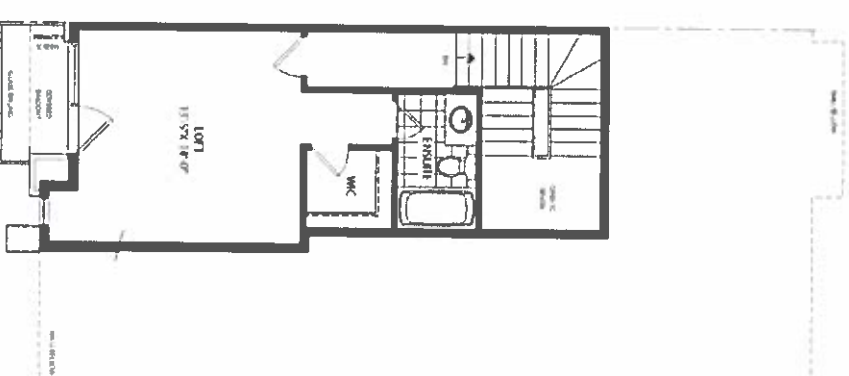


Heated Floor

LOFT PLAN ELEV B



OPT LOFT PLANE ELEV B



SCHEDULE "H"

9234

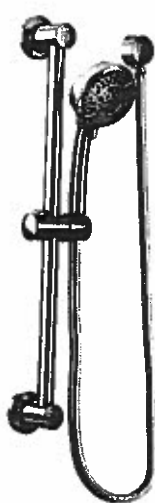
Feb. 21, 22

All dimensions are approximately normal on location variances. Dimensions may exceed the usable floor area. Stock specifications, floor plans and item's card conditions are subject to change without notice. Drawings may show optional features which may not be used at the same price. Materials, hardware, factory and field variants may apply; contact a sales advisor for details. We will add inventory at our discretion. E.O.E. All rights reserved. Delivery option.

VALERY HOMES

Chateau®

POSI-TEMP®



- Primary
Ens
- Main
Bath
- Loft

**Posi-Temp® Tub/Shower Faucet with
3 Function Transfer Valve/Trim and
Slide Bar with Hand Shower***

TL183EP / U361CI / UT2721 / 3669EP /
A725 / 62320

Chrome \$1,189.56

x3

Lot 223-5
Qct 21, 22



**Posi-Temp® Shower Only with 3
Function Transfer Valve/Trim and
Slide Bar with Hand Shower***

TL182EP / U361CI / UT2721 /
3669EP / A725 / 62320

Chrome \$1,154.89



**Posi-Temp® Tub/Shower Faucet
with 4 Function Hand Shower***

TL2359EP / 62320

Chrome \$480.30



**Eco-Performance Posi-Temp®
Tub/Shower Faucet***

TL183EP / 62320

Chrome \$278.65



**Eco-Performance Posi-Temp®
Shower Only***

TL182EP / 62320

Chrome \$243.97

CHATEAU
FINISH OPTION



Chrome

To order Chrome (C) model, use
model number only.

* Refer to the Shower Design Guide
for Installation Instructions