

CONSTRUCTION SUMMARY

Joshua Creek - 223-3 ARBOURVIEW (TH-02) B

Registere Plan Number: Municipal Address: Closing: **11-Sep-23**

BONUS

Inv.477 27 Line 9700 1 Nov22 / 17Dec23	1 - BONUS PACKAGE: \$5,000.00 WORTH OF UPGRADES FROM VALERY HOMES DÉCOR CENTRE IS BEING APPLIED TOWARD THE STRUCTURAL APPOINTMENT Note:
---	---

ELECTRICAL

Inv.477 3 Line 9675 1 Nov22 / 17Dec23	1 - FAMILY ROOM: INSTALL ELECTRICAL - ROUGH-IN FOR 15 AMP FOR FUTURE TV ABOVE FIREPLACE Note:
--	---

Inv.477 8 Line 9680 1 Nov22 / 17Dec23	1 - KITCHEN: INSTALL ELECTRICAL - ROUGH-IN FOR 15 AMP BUILT-IN MICROWAVE OVEN Note:
--	---

Inv.477 9 Line 9681 1 Nov22 / 17Dec23	1 - KITCHEN: CEILING FIXTURE - RELOCATE STANDARD CEILING FIXTURE. TO GO ABOVE ISLAND. LOCATIONS MAY VARY SLIGHTLY DUE TO JOIST LOCATIONS Note:
--	--

Inv.477 10 Line 9682 1 Nov22 / 17Dec23	3 - KITCHEN: INSTALL THREE (3) POT LIGHT - 4" LED NON-INSULATED CEILINGS. LOCATIONS MAY VARY SLIGHTLY DUE TO JOIST LOCATIONS. Note:
---	---

Inv.477 11 Line 9683 1 Nov22 / 17Dec23	6 - FAMILY ROOM: INSTALL SIX (6) POT LIGHT - 4" LED NON-INSULATED CEILINGS. LOCATIONS MAY VARY SLIGHTLY DUE TO JOIST LOCATIONS. KEEP STANDARD LIGHT Note:
---	---

Inv.477 12 Line 9684 1 Nov22 / 17Dec23	4 - DEN: INSTALL FOUR (4) POT LIGHT - 4" LED NON-INSULATED CEILINGS. LOCATIONS MAY VARY SLIGHTLY DUE TO JOIST LOCATIONS. KEEP STANDARD LIGHT Note:
---	--

Inv.477 13 Line 9685 1 Nov22 / 17Dec23	1 - PRIMARY ENSUITE: INSTALL CEILING LIGHT ROUGH IN - FOR 1 CEILING LIGHT - ON SEPARATE SWITCH (DOES NOT INCLUDE FIXTURE). LOCATION MAY VARY SLIGHTLY DUE TO JOIST LOCATION Note:
---	---

FIREPLACE

Inv.477 6 Line 9678 1 Nov22 / 17Dec23	1 - FAMILY ROOM: INSTALL FIREPLACE - PAINT GRADE MANTEL - PF - 52 - MINIMUM WALL WIDTH 66 INCH Note:
--	--

HVAC

Inv.477 26 Line 9699 1 Nov22 / 17Dec23	1 - AIR CONDITIONER AND FLOW - THROUGH HUMIDIFIRE AND MEDIA FILTER - ML14 - 14 SEER - 2.5 TON - WITH FLOW THRU HUMIDIFIER AND 5 INCH MEDIA FILTER Note:
---	---

INTERIOR DOORS & TRIM

CONSTRUCTION SUMMARY

Joshua Creek - 223-3 ARBOURVIEW (TH-02) B

Registere Plan Number: Municipal Address: Closing: **11-Sep-23**

Inv.477 7	12 - SECOND FLOOR: INTERIOR DOOR & TRIM - EXTENDED HEIGHT DOOR 96 INCH - 2ND FLOOR, UPGRADE FROM STD. 84". TOTAL 12 DOORS
Line 9679	Note:
Nov22 / 17Dec23	

MISCELLANEOUS

Inv.477 28	1 - Purchaser has attended a Structural appointment at the Decor Centre & has DECLINED any additional upgrades and accepts and acknowledges that there will be no further structural changes/additions/deletions to be made upon signing
Line 9701	Note: Purchaser accepts & acknowledges that all upgrades are to be approved by construction before the invoice is accepted
Nov22 / 17Dec23	

PLUMBING

Inv.477 14	1 - KITCHEN: ADD ADDITIONAL PLUMBING WHEN ADDING POT FILLER
Line 9687	Note:
Nov22 / 17Dec23	

Inv.477 15	1 - KITCHEN: INSTALL POT FILLER:
	MOEN MODERN TWO HANDLE POT FILLER FAUCET WITH DUAL SHUT OFFS
	S665 BLACK STAINLESS
Line 9688	Note:
Nov22 / 17Dec23	

Inv.477 16	1 - PRIMARY ENSUITE: INSTALL PLUMBING FOR RAIN SHOWERHEAD FROM CEILING, MUST PURCHASE SHOWERHEAD.
Line 9689	Note:
Nov22 / 17Dec23	

Inv.477 17	1 - PRIMARY: KEEP STANDARD SHOWERHEAD, IN ADDITION TO UPGRADED RAIN SHOWER
Line 9690	Note:
Nov22 / 17Dec23	

Inv.477 18	1 - PRIMARY ENSUITE: RAIN SHOWERHEAD
	MOEN 12" RAINSHOWER WITH IMMERSION
	S1004 CHROME
Line 9691	Note:
Nov22 / 17Dec23	

Inv.477 20	1 - PRIMARY ENSUITE: INSTALL SHOWER NICHE
Line 9692	Note:
Nov22 / 17Dec23	

Inv.477 21	1 - BACKFLOW PREVENTER VALVE
Line 9693	Note:
Nov22 / 17Dec23	

Inv.477 22	1 - KITCHEN: EXTRA ROUGH-IN LINE FOR FRIDGE ICE MAKER WITH SHUT-OFF
Line 9694	Note:
Nov22 / 17Dec23	

CONSTRUCTION SUMMARY

Joshua Creek - 223-3 ARBOURVIEW (TH-02) B

Registere Plan Number: Municipal Address: Closing: **11-Sep-23**

Inv.477 19	1 - PRIMARY ENSUITE: EXTENSION ARM FOR RAIN SHOWERHEAD
	6" STRAIGHT SHOWER ARM
	116651 CHROME
Line 9695	Note:
1 Nov22 / 17Dec23	

VACCUM/BELL

Inv.477 23	1 - CENTRAL VACUUM - CENTRAL VAC PIPING COMPLETE ROUGH-IN TO GARAGE - TWO OUTLETS PER FLOOR AND ONE OUTLET IN BASEMENT R/I ONLY
Line 9696	Note:
1 Nov22 / 17Dec23	

Inv.477 24	1 - CENTRAL VACUUM - KICK PLATE ROUGH - IN AND KICKPLATE KIT, AT KITCHEN SINK
Line 9697	Note:
1 Nov22 / 17Dec23	

Inv.477 25	1 - FAMILY ROOM: SURROUND SOUND - ROUGH-IN SPEAKER WIRES (X5) SUBWOOFER CABLE (X1) 6.5 INCH SPEAKER ROUGH-IN BRACKETS (X5).
Line 9698	Note:
1 Nov22 / 17Dec23	

Inv.477 4	1 - LOFT: INSTALL CAT-6A NETWORK CABLE FOR WIRELESS ACCESS POINT - TERMINATED
Line 9676	Note:
1 Nov22 / 17Dec23	

Inv.477 1	1 - CAT 6A LOCATION SKETCH. LOCATIONS MAY VARY SLIGHTLY DUE TO JOIST LOCATIONS
Line 9673	Note:
1 Nov22 / 17Dec23	

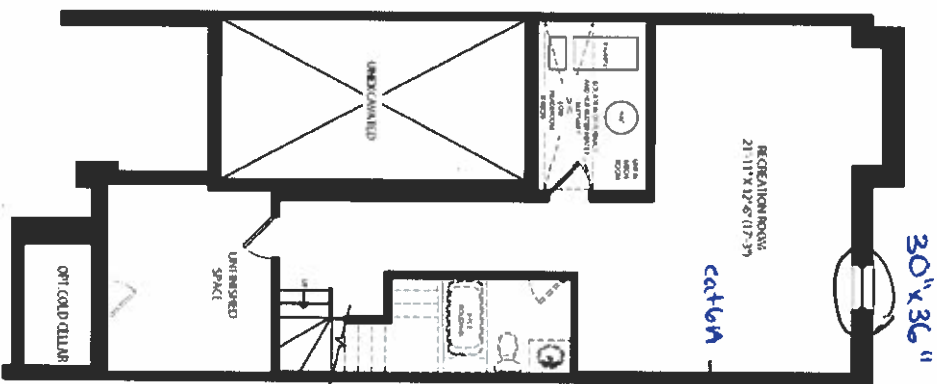
Inv.477 2	1 - FAMILY ROOM: INSTALL 1 1 / 4" ORANGE FLEX CONDUIT FOR FUTURE TV ABOVE FIREPLACE
Line 9674	Note:
1 Nov22 / 17Dec23	

WINDOWS

Inv.477 5	1 - BASEMENT: BASEMENT WINDOW - ENLARGE ONE STANDARD WINDOW TO- 36 X 30
Line 9677	Note:
1 Nov22 / 17Dec23	

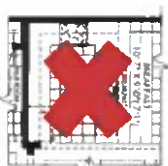
TH-2
ARBOURVIEW
ELEV B 2,898 SQ. FT.

FINISHED
BASEMENT ELEV B



JOSHUA CREEK
MONTAGE

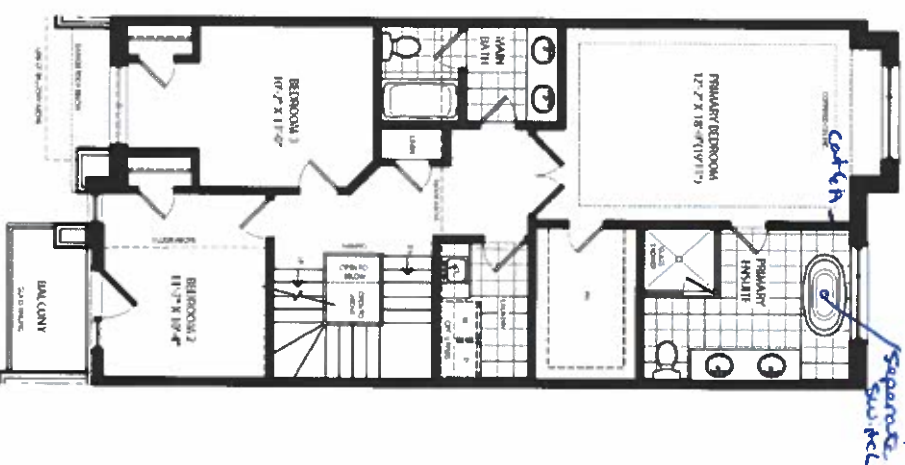
PARTIAL OPTIONAL KITCHEN



GROUND FLOOR ELEV B



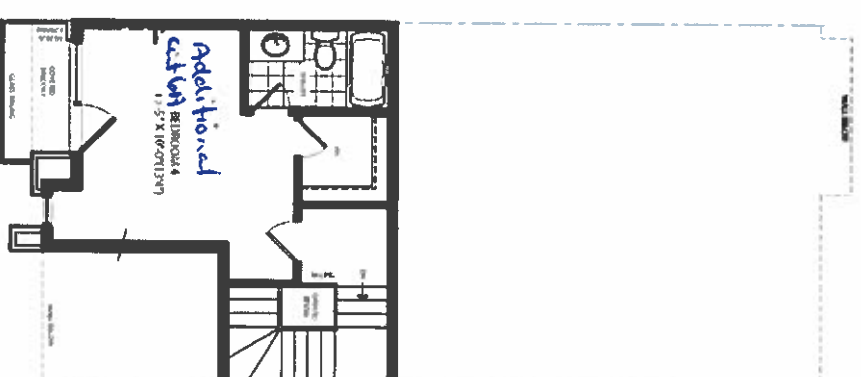
SECOND FLOOR ELEV B



LOFT PLAN
ELEV B



OPT LOFT PLAN ELEV B



SCHEDULE "H"

Lot 223-3
April, 22

All dimensions are approximate and subject to normal construction practices. Dimensions may exceed the actual floor area. Sales agent's drawings, floor plans and terms and conditions are subject to change without notice. Changes in price, options, features and materials may not be included in the basic price. Plans may be revised without notice and changes may apply. Contact sales agent for further details. All items are subject to availability. All items are subject to availability. All items are subject to availability.

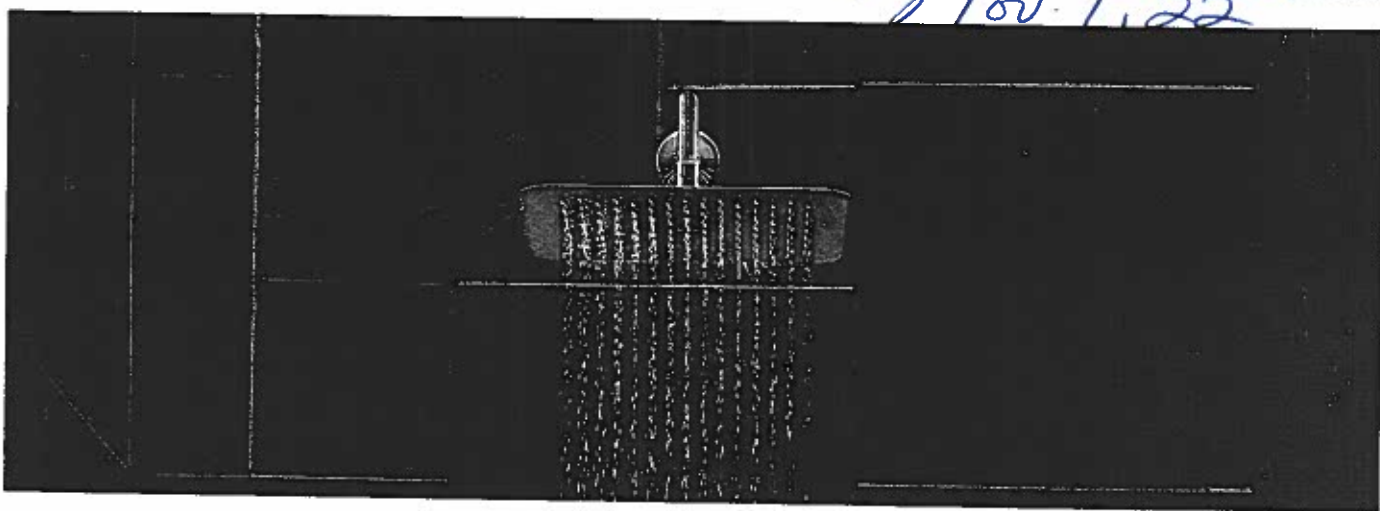
VALERY
HOMES

Not 223-3
Nov 1, 22

N PK

SHOWERING

Rainshowers



10" Rainshower with Immersion™

S1001

Chrome \$606.05



Chrome



10" Rainshower with Immersion™

S1003

Chrome \$635.95



Chrome



12" Rainshower with Immersion™

S1002

Chrome \$643.48



Chrome



12" Rainshower with Immersion™

S1004

Chrome \$673.44



Chrome

Primary
Ensuite

To order Chrome (C) model, use model number only.

Showering Arms & Flanges

SHOWERING

Lot 223-3

NO

FK

Nov. 1, 22



Overhead Shower Arm

1380
Chrome \$100.40
WR \$172.16



LifeShine® Brushed Nickel (BN),
Oil Rubbed Bronze (ORB), Matte Black (BL),
Brushed Gold (BG)



8" Curved Shower Arm

123815
Chrome \$37.61
Oil Rubbed Bronze \$85.73
Other \$83.38



Chrome, LifeShine® Brushed Nickel (BN), LifeShine®
Polished Nickel (NL), Oil Rubbed Bronze (ORB),
Matte Black (BL), Brushed Gold (BG)



Straight Shower Arm

51
Chrome \$57.56
WR \$122.59



LifeShine® Brushed Nickel (BN), LifeShine®
Polished Nickel (NL), Oil Rubbed Bronze (ORB),
Wrought Iron (WR), Brushed Gold (BG)



6" Straight Shower Arm

116651
Chrome \$26.34
Other \$43.30



Chrome, LifeShine® Brushed Nickel (BN), LifeShine®
Polished Nickel (NL), Oil Rubbed Bronze (ORB),
Wrought Iron (WR), Brushed Gold (BG)

Primary
Ensuite



Round Shower Flange

11
Chrome \$11.85
WR \$30.71
Black / \$32.49
Brushed Nickel



LifeShine® Brushed Nickel (BN),
Polished Nickel (NL),
Matte Black (BL), Brushed Gold (BG)



Square Shower Flange

147572
Chrome \$24.21
Other \$48.42



Chrome, LifeShine® Brushed Nickel (BN),



Round Shower Flange

AT2199
Chrome \$15.07
Other \$40.14



Chrome, LifeShine® Brushed Nickel (BN), LifeShine®
Polished Nickel (NL), Oil Rubbed Bronze (ORB),
Wrought Iron (WR), Brushed Gold (BG)

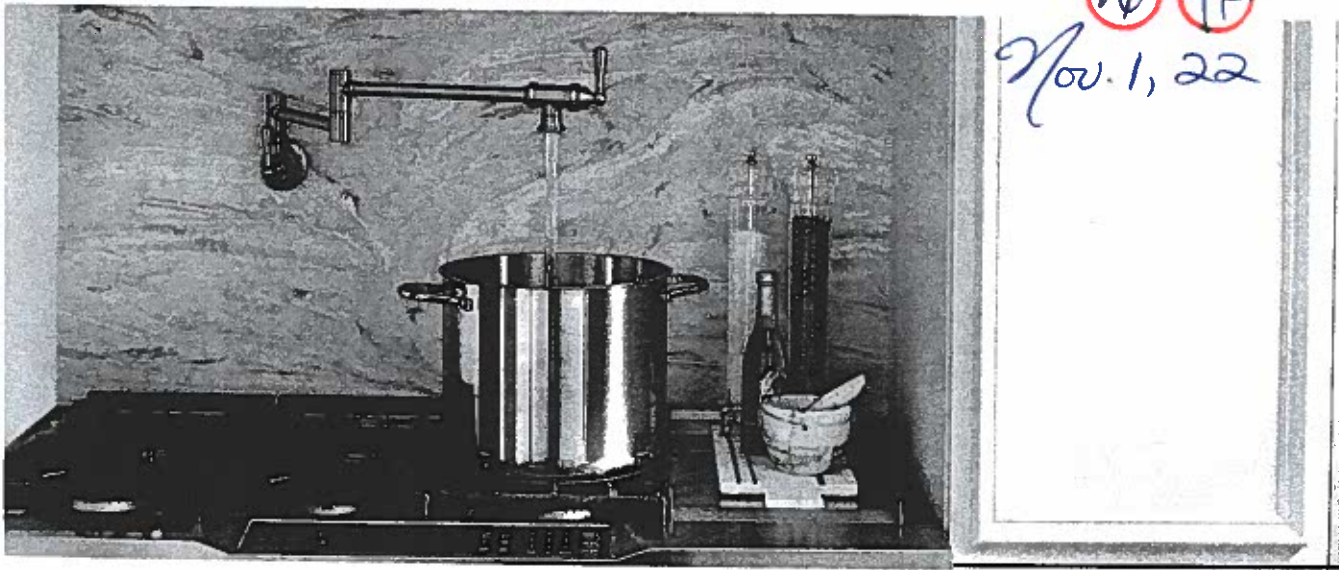
One the model number with one of these finish letter(s): LifeShine® Brushed Nickel (BN), Oil Rubbed Bronze (ORB), LifeShine® Polished Nickel (NL), Wrought Iron (WR), Brushed Gold (BG) & Matte Black (BL).
The (C) model, use model number only.

Pot Fillers

Lot 223-3

NO FR

Nov. 1, 22



POT FILLERS



Traditional Two Handle Pot Filler
Faucet with Dual Shut-Offs

Chrome	\$1,132.12
Other	\$1,582.69

Single hole installation only
Not available in BLS

BG - Brushed Gold



Kitchen

Modern Two Handle Pot Filler
Faucet with Dual Shut-Offs

S665	
Chrome	\$1,132.12
Other	\$1,582.69
Black Stainless	\$1,741.04

Single hole installation only
Not available in ORB & NL.

FINISH OPTIONS



Chrome (IC), Spot Resist Stainless (SRS), Matte Black (BL),
Oil Rubbed Bronze (ORB), LifeShine® Polished Nickel (NL),
Black Stainless (BLS)

To order, combine the model number with one of these finish letter(s). Spot Resist
Stainless (SRS), Matte Black (BL), Oil Rubbed Bronze (ORB), LifeShine® Polished
Nickel (NL) & Black Stainless (BLS).

To order Chrome (IC) models, use model number only.