

CONSTRUCTION SUMMARY

Joshua Creek - 222-5 EDGEMERE (TH-03) A

Registere Plan Number: Municipal Address: Closing: **20-Sep-23**

BONUS

Inv.456 18	1 - BONUS PACKAGE: \$5,000.00 WORTH OF UPGRADES FROM VALERY HOMES DÉCOR CENTRE IS BEING APPLIED TOWARD THE STRUCTURAL APPOINTMENT.
Line 9250	Note:
31Aug22 / 31Aug22	

CEILING

Inv.456 3	1 - 2ND FLOOR: SMOOTH CEILING, SECOND FLOOR
Line 9235	Note:
31Aug22 / 31Aug22	

CONSTRUCTION

Inv.456 2	1 - BASEMENT: INSTALL COLD CELLAR
Line 9234	Note:
31Aug22 / 31Aug22	

ELECTRICAL

Inv.456 5	1 - KITCHEN: INSTALL RECEPTACLES - ADDITIONAL 15 AMP 120 VOLT RECEPTACLE, FOR GAS STOVE
Line 9237	Note:
31Aug22 / 31Aug22	

Inv.456 8	1 - FAMILY ROOM: INSTALL ELECTRICAL - ROUGH-IN FOR 15 AMP ABOVE FIREPLACE FOR FUTURE TV
Line 9240	Note:
31Aug22 / 31Aug22	

Inv.456 10	1 - GARAGE: RECEPTACLES - EV STATION DEDICATED 240 VOLT RECEPTACLE
Line 9242	Note:
31Aug22 / 31Aug22	

HVAC

Inv.456 11	1 - AIR CONDITIONER AND FLOW - THROUGH HUMIDIFIRE AND MEDIA FILTER -14ACX - 14 SEER - 2.5 TON - WITH FLOW THRU HUMIDIFIER AND 5 INCH MEDIA FILTER
Line 9243	Note:
31Aug22 / 31Aug22	

Inv.456 1	1 - CAT 6A LOCATION SKETCH. LOCATIONS MAY VARY SLIGHTLY DUE TO JOIST LOCATIONS
Line 9233	Note:
31Aug22 / 31Aug22	

Inv.456 4	1 - KITCHEN: INSTALL GAS PIPING AND OTHER - GAS LINE R/I FOR MAIN FLOOR - STOVE
Line 9236	Note:
31Aug22 / 31Aug22	

INTERIOR DOOR & TRIM

Inv.456 6	3 - MAIN FLOOR: INSTALL THREE (3) SHAKER STYLE , MADISON DOOR, 1 PANEL, HOLLOW CORE 96" H
Line 9238	Note:
31Aug22 / 31Aug22	

CONSTRUCTION SUMMARY

Joshua Creek - 222-5 EDGEMERE (TH-03) A

Registere Plan Number: Municipal Address: Closing: **20-Sep-23**

Inv.456 7	17 - BASEMENT & SECOND FLOOR: INSTALL SEVENTEEN (17) SHAKER STYLE , MADISON DOOR, 1 PANEL, HOLLOW CORE 84" H
Line 9239	Note:
31Aug22 / 31Aug22	

MISCELLANEOUS

Inv.456 19	1 - Purchaser has attended a Structural appointment at the Decor Centre & has DECLINED any additional upgrades and accepts and acknowledges that there will be no further structural changes/additions/deletions to be made upon signing
Line 9251	Note:
31Aug22 / 31Aug22	

PLUMBING

Inv.456 12	1 - BASEMENT: 3 PIECE BATHROOM - EXTRA 3-PIECE FINISHED BATH, COMPLETE
Line 9244	Note:
31Aug22 / 31Aug22	

Inv.456 13	1 - BACKFLOW PREVENTER VALVE
Line 9245	Note:
31Aug22 / 31Aug22	

VACCUM/BELL

Inv.456 14	1 - ALARM ROUGH IN - KEYPAD (X2), SIREN (X1), MOTIONS (X2), DOOR CONTACTS (3). ROUGHED BACK TO HYDRO PANEL
Line 9246	Note:
31Aug22 / 31Aug22	

Inv.456 15	2 - BASEMENT: INSTALL ALARM ROUGH IN - WINDOW CONTACTS (2) IN BASEMENT. ROUGHED BACK TO HYDRO PANEL
Line 9247	Note:
31Aug22 / 31Aug22	

Inv.456 16	1 - MAIN FLOOR FMILY ROOM: INSTALL ALARM ROUGH IN - WINDOW CONTACTS (1) IN FAMILY ROOM. ROUGHED BACK TO HYDRO PANEL
Line 9248	Note:
31Aug22 / 31Aug22	

Inv.456 17	1 - CANAVAC PREMIUM CANISTER WITH RUG AND FLOOR HOSE KIT - INCLUDES C-VAC INLET VALVES AND INSTALLATION. COMPLETE
Line 9249	Note:
31Aug22 / 31Aug22	

Inv.456 9	1 - FAMILY ROOM: INSTALL 1 1/4" ORANGE FLEX CONDUIT ABOVE FIREPLACE FOT FUTURE TV
Line 9241	Note:
31Aug22 / 31Aug22	

**TH-3
EDGEEMERE
ELEV. 2,914 SQ. FT.**

ELEV. A 2.914 SQ. FT.

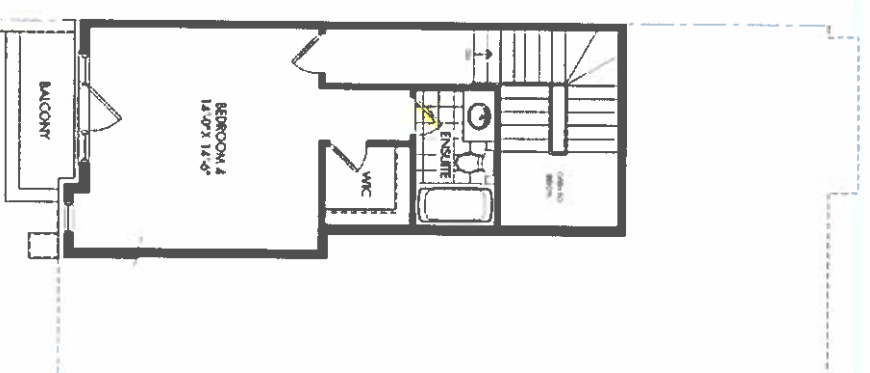
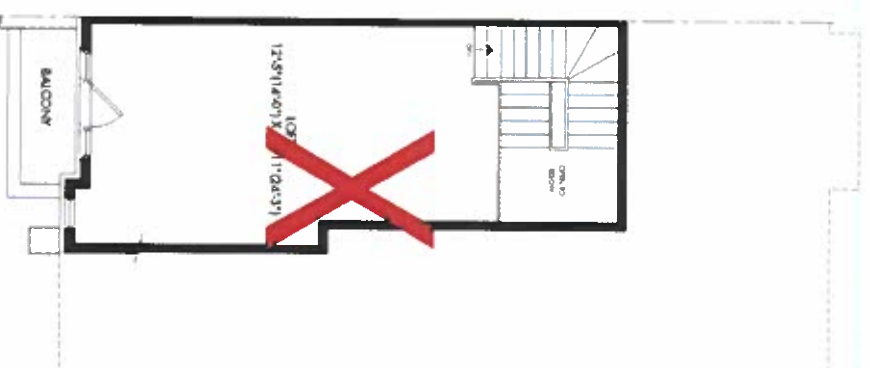
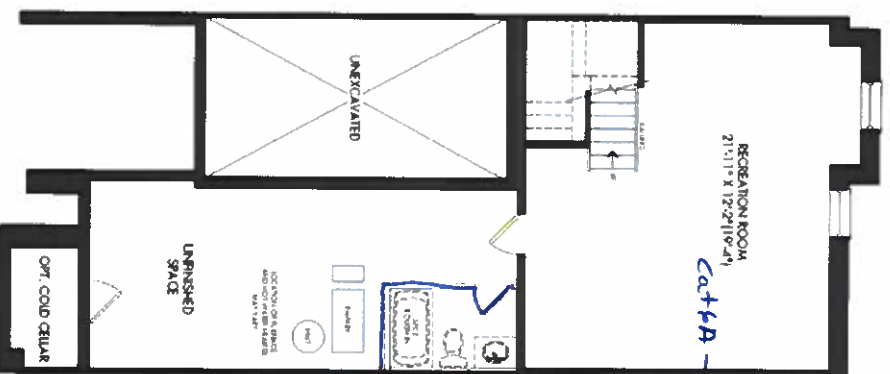
FINISHED
BASEMENT ELEV A

GROUND FLOOR ELEV A

SECOND FLOOR ELEV A

LOFT PLAN ELEV A

OPT. LOFT PLAN ELEV A



July 31, 2025 SCHEDULE "H"

22-5-2020

JOSHUA CREEK

MONTAGE

All dimensions are approximate and subject to normal construction variations. Dimensions may vary from the usable floor area. Seals, specifications, floor plans and terms and conditions are subject to change without notice. Drawings may show optional features which may not be included in the basic price. Plans may be altered. Builders and landscape valuations may apply. Contact a sales advisor for further details. A residential site agent's consent to the use of all rights reserved. Bradley Holmes.

VALERY