

CONSTRUCTION SUMMARY

Joshua Creek - 45 ALDERCREST (42-02) B

Register Plan Number: Municipal Address: Closing: **11-Sep-23**

BONUS

Inv.454 42	1 - BONUS PACKAGE: \$5,000.00 WORTH OF UPGRADES FROM VALERY HOMES DECOR CENTRE IS BEING APPLIED TOWARD THE STRUCTURAL APPOINTMENT.
Line 9190	Note:
24Aug22 / 24Aug22	

CEILING

Inv.454 3	2 - SERCOND FLOOR & BASEMENT: INSTALL SMOOTH CEILING, SECOND FLOOR AND BASEMENT
Line 9149	Note:
24Aug22 / 24Aug22	

CONSTRUCTION

Inv.454 4	1 - GARAGE INSULATION - ALL WALLS AND CEILING
Line 9150	Note:
24Aug22 / 24Aug22	

ELECTRICAL

Inv.454 10	1 - KITCHEN: INSTALL RECEPTACLES - ADDITIONAL 15 AMP 120 VOLT RECEPTACLE FOR GAS STOVE
Line 9157	Note:
24Aug22 / 24Aug22	

Inv.454 11	1 - ELECTRICAL - ROUGH-IN FOR DEDICATED 15 AMP 120 V FOR FREEZER
Line 9158	Note:
24Aug22 / 24Aug22	

Inv.454 12	1 - ELECTRICAL - ROUGH-IN FOR DEDICATED 15 AMP 120 V FOR MICROWAVE IN CABINETS
Line 9159	Note:
24Aug22 / 24Aug22	

Inv.454 18	1 - DEN: INSTALL ELECTRICAL - ROUGH-IN FOR DEDICATED 15 AMP 120 V ADDITIONAL TO THE STANDARDS
Line 9165	Note:
24Aug22 / 24Aug22	

Inv.454 19	1 - FURNACE ROOM IN BASEMENT: ELECTRICAL - ROUGH-IN FOR DEDICATED 15 AMP 120 V
Line 9166	Note:
24Aug22 / 24Aug22	

Inv.454 20	2 - BASEMENT: INSTALL ELECTRICAL - ROUGH-IN FOR TWO (2) DEDICATED 15 AMP 120 V. SEE SKETCH FOR LOCATION
Line 9167	Note:
24Aug22 / 24Aug22	

Inv.454 21	1 - BASEMENT: INSTALL ELECTRICAL - ROUGH-IN FOR DEDICATED 30 - 40 AMP 220 V SEE SKETCH FOR LOCATION
Line 9168	Note:
24Aug22 / 24Aug22	

Inv.454 24	9 - FAMILY ROOM: INSTALL NINE (9) POT LIGHTS - 4" LED NON-INSULATED CEILINGS, ON SEPARATE SWITCH. LOCATIONS MAY VARY SLIGHTLY DUE TO JOIST LOCATIONS
Line 9171	Note:
24Aug22 / 24Aug22	

CONSTRUCTION SUMMARY

Joshua Creek - 45 ALDERCREST (42-02) B

Registere Plan Number: Municipal Address: Closing: **11-Sep-23**

Inv.454 25 Line 9172	5 - KITCHEN: INSTALL FIVE (5) POT LIGHTS - 4" LED NON-INSULATED CEILINGS, ON SEPARATE SWITCH. LOCATIONS MAY VARY SLIGHTLY DUE TO JOIST LOCATIONS Note:
24Aug22 / 24Aug22	
Inv.454 26 Line 9173	4 - BREAKFAST AREA: INSTALL FOUR (4) POT LIGHTS - 4" LED NON-INSULATED CEILINGS, ON SEPARATE SWITCH. LOCATIONS MAY VARY SLIGHTLY DUE TO JOIST LOCATIONS Note:
24Aug22 / 24Aug22	
Inv.454 27 Line 9174	4 - DEN: INSTALL FOUR (4) POT LIGHTS - 4" LED NON-INSULATED CEILINGS, ON SEPARATE SWITCH. LOCATIONS MAY VARY SLIGHTLY DUE TO JOIST LOCATIONS Note:
24Aug22 / 24Aug22	
Inv.454 28 Line 9175	4 - DINING ROOM: INSTALL FOUR (4) POT LIGHTS - 4" LED NON-INSULATED CEILINGS, ON SEPARATE SWITCH. LOCATIONS MAY VARY SLIGHTLY DUE TO JOIST LOCATIONS Note:
24Aug22 / 24Aug22	
Inv.454 29 Line 9176	3 - MAIN HALL: INSTALL THREE (3) POT LIGHTS - 4" LED NON-INSULATED CEILINGS, ON SEPARATE SWITCH. LOCATIONS MAY VARY SLIGHTLY DUE TO JOIST LOCATIONS. DELETE STANDARD LIGHT Note:
24Aug22 / 24Aug22	
Inv.454 30 Line 9177	1 - FOYER - SECOND STORY: CEILING LIGHT ROUGH IN - FOR 1 CEILING LIGHT - ON SEPARATE SWITCH (DOES NOT INCLUDE FIXTURE) *TRY TO PUT AS CLOSE TO THE PEAK IN THE CEILING AS POSSIBLE. LOCATIONS MAY VARY SLIGHTLY DUE TO JOIST LOCATIONS Note:
24Aug22 / 24Aug22	
Inv.454 31 Line 9178	1 - FOYER: REINFORCE FIXTURE FOR CHANDELIER MAX WEIGHT IS 50 POUNDS Note:
24Aug22 / 24Aug22	
Inv.454 32 Line 9179	1 - ELECTRICAL - ROUGH-IN FOR AC UNIT. INCLUDES BREAKER & LOW VOLTAGE WIRE Note:
24Aug22 / 24Aug22	
Inv.454 15 Line 9162	1 - FAMILY ROOM: INSTALL ELECTRICAL - ROUGH-IN FOR DEDICATED 15 AMP 120 V FOR TV ABOVE FIREPLACE Note:
24Aug22 / 24Aug22	

HVAC

Inv.454 1 Line 9146	1 - CAT 6A LOCATION SKETCH. LOCATIONS MAY VARY SLIGHTLY DUE TO JOIST LOCATIONS Note:
24Aug22 / 24Aug22	
Inv.454 8 Line 9154	1 - KITCHEN: INSTALL GAS PIPING AND OTHER - UPGRADE STOVE VENT FROM 6 INCH TO 8 INCH PURCHASER WILL HAVE CABINETS ABOVE AS STANDARD Note:
24Aug22 / 24Aug22	

**Joshua Creek - 45 ALDERCREST (42-02) B**

Registree Plan Number: Municipal Address: Closing: 11-Sep-23

Inv.454	1 - KITCHEN: INSTALL GAS PIPING AND OTHER - GAS LINE R/I FOR BASEMENT OR MAIN
9	FLOOR - STOVE
Line 9156	Note:
24Aug22 / 24Aug22	

INTERIOR DOOR & TRIM

Inv.454	1 - GRIP SET- STRAIT IN MATTE BLACK
5	
Line 9151	Note:
24Aug22 / 24Aug22	

Inv.454	25 - INTERIOR DOOR HARDWARE, PACE LINE IN MATTE BLACK INCLUDING. EXTERIOR
6	DOOR, NOT GRIP SET. PRICE IS EACH
Line 9152	Note:
24Aug22 / 24Aug22	

Inv.454	1 - DEN: INSTALL 3 PANEL FRENCH DOOR, WHITE, CLEAR GLASS 96" H
7	
Line 9153	Note:
24Aug22 / 24Aug22	

MISCELLANEOUS

Inv.454	1 - Purchaser has attended a Structural appointment at the Decor Centre & has DECLINED any additional
43	upgrades and accepts and acknowledges that there will be no further structural
	changes/additions/deletions to be made upon signing
Line 9191	Note:
24Aug22 / 24Aug22	

PLUMBING

Inv.454	1 - BASEMENT: INSTALL LAUNDRY: INSTALL ROUGH-IN LAUNDRY ROOM IN BASEMENT-
22	INCL. PLUMBING, ELECTRICAL, VENTING. TILED FLOOR MUST BE PURCHASED IF ROUGH-IN IS ON CARPET. *LAUNDRY TUB R/I NOT INCLUDED
	DRYER TO BE ON TOP (FOR VENTING).
Line 9169	Note:
24Aug22 / 24Aug22	

Inv.454	1 - BASEMENT: INSTALL EXTRA WET BAR, ROUGH-IN ONLY
23	
	*TILES MUST BE PURCHASED FOR WET AREA AT THE TIME OF COLOURS
Line 9170	Note:
24Aug22 / 24Aug22	

Inv.454	1 - KITCHEN: INSTALL EXTRA ROUGH-IN LINE FOR FRIDGE ICE MAKER WITH SHUT-OFF
13	FOR FRIDGE
Line 9160	Note:
24Aug22 / 24Aug22	

Inv.454	1 - KITCHEN: INSTALL EXTRA ROUGH-IN LINE FOR FRIDGE ICE MAKER WITH SHUT-OFF *
14	FOR FREEZER
Line 9161	Note:
24Aug22 / 24Aug22	

Inv.454	1 - BACKFLOW PREVENTER VALVE
33	
Line 9180	Note:
24Aug22 / 24Aug22	

CONSTRUCTION SUMMARY

Joshua Creek - 45 ALDERCREST (42-02) B

Registere Plan Number: Municipal Address: Closing: **11-Sep-23**

Inv.454 34 Line 9181 24Aug22 / 24Aug22	1 - PRIMARY ENSUITE: INSTALL PLUMBING FOR RAIN SHOWERHEAD FROM CEILING, MUST PURCHASE SHOWERHEAD. IN LIEU OF STANDARD SHOWERHEAD ON WALL Note:
Inv.454 35 Line 9182 24Aug22 / 24Aug22	1 - PRIMARY ENSUITE: KEEP STANDARD SHOWERHEAD, IN ADDITION TO UPGRADED RAIN SHOWER Note:
Inv.454 36 Line 9183 24Aug22 / 24Aug22	1 - PRIMARY ENSUITE: RAIN SHOWER HEAD 12" RAINSHOWER WITH IMMERSION MOEN #S1004 Note:
Inv.454 37 Line 9184 24Aug22 / 24Aug22	1 - KITCHEN: ADD ADDITIONAL PLUMBING WHEN ADDING POT FILLER Note:
Inv.454 38 Line 9185 24Aug22 / 24Aug22	1 - PRIMARY ENSUITE: INSTALL 6" STRAIGHT SHOWER ARM MOEN #116651 Note:
Inv.454 39 Line 9186 24Aug22 / 24Aug22	1 - KITCHEN: INSTALL POT FILLER MOEN #S665 BLACK MATTE MODERN TWO HANDLE POT FILLER FAUCET WITH DUAL SHUT-OFFS Note:

VACCUM/BELL

Inv.454 40 Line 9187 24Aug22 / 24Aug22	2 - EXTERIOR: CAT-5E NETWORK CABLE FOR PHONE, INTERNET OR IP CAMERA - TERMINATED. ONE ON EACH SIDE OF THE HOUSE. SEE SKETCH Note:
Inv.454 16 Line 9163 24Aug22 / 24Aug22	1 - FAMILY ROOM: INSTALL 1 1/4" ORANGE FLEX CONDUIT ABOVE FIREPLACE FOR FUTURE TV ABOVE FIREPLACE Note:
Inv.454 17 Line 9164 24Aug22 / 24Aug22	1 - 10G NETWORK PACKAGE - 4 CAT6A NETWORK CABLES FOR IPTVS - TERMINATED. ADDITIONAL TO GO IN DEN, DINING ROOM, BED 3 AND BED 4 Note:

WINDOWS

Inv.454 41 Line 9189 24Aug22 / 24Aug22	1 - SECOND FLOOR: INSTALL SKY LIGHT IN UPPER HALL. LOCATION SHOWN IS APPROXIMATE Note:
---	---

WINDOWS



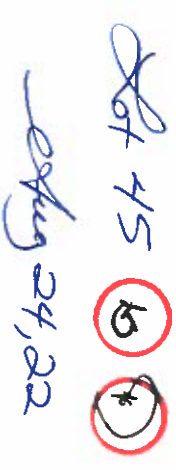
CONSTRUCTION SUMMARY

Joshua Creek - 45 ALDERCREST (42-02) B

Registere Plan Number: Municipal Address: Closing: 11-Sep-23

Inv.454	1 - BASEMENT: BASEMENT WINDOW - EGRESS - ENLARGE STANDARD WINDOW AND
2	MAKE EGRESS- 56 X 30
Line 9147	Note:
24Aug22 / 24Aug22	

42-2



MONTAGE

[illegible]

VALERY HOMES

HOME



OPTIONAL SECOND FLOOR ELEV A
5 BEDROOM



PARTIAL OPTIONAL SECOND FLOOR ELEV B
5 BEDROOM



PARTIAL OPTIONAL SECOND FLOOR ELEV C
5 BEDROOM

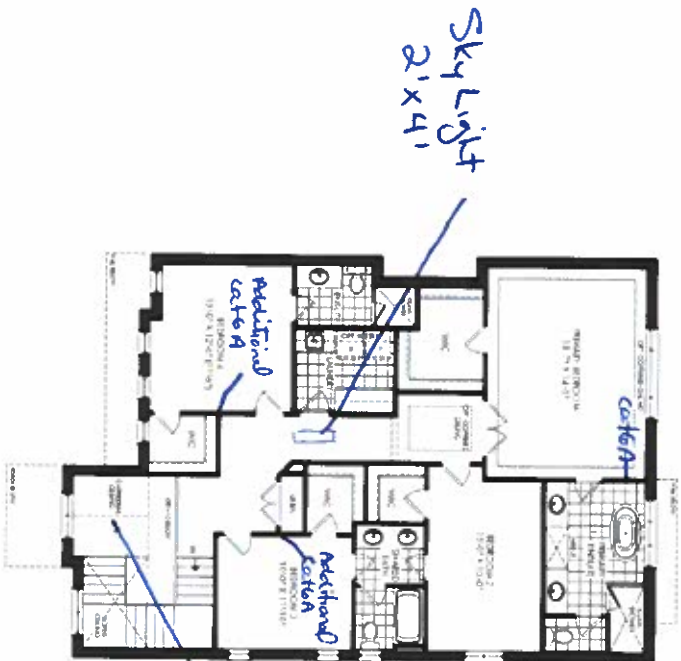


PARTIAL SECOND FLOOR ELEV B



PARTIAL SECOND FLOOR ELEV C

SECOND FLOOR ELEV A



Rough-in light on
separate switch
Keep rough-in as close
to peak as possible,
on right side of peak

Lot 45
August 24, 2022

JOSHUA CREEK

MONTAGE

4. Other sorts of approvals and subject to not construction volume. Drawings may be revised. Some specifications are subject to change without notice. Drawings may show, but not necessarily include, the data price. Plans may be revised. Before any construction, contact the sales office for further details. All rights reserved. Design Home.

VALERY
HOMES

ALDERCREST

42-2

Lot 45
24, 22
(B) (P)



PARTIAL FINISHED BASEMENT PLAN ELEV. A, B & C
WITH OPT. EXTERIOR STAIR



PARTIAL BASEMENT FLOOR ELEV. A, B & C
WITH OPT. EXTERIOR STAIR

JOSHUA CREEK

MONTAGE

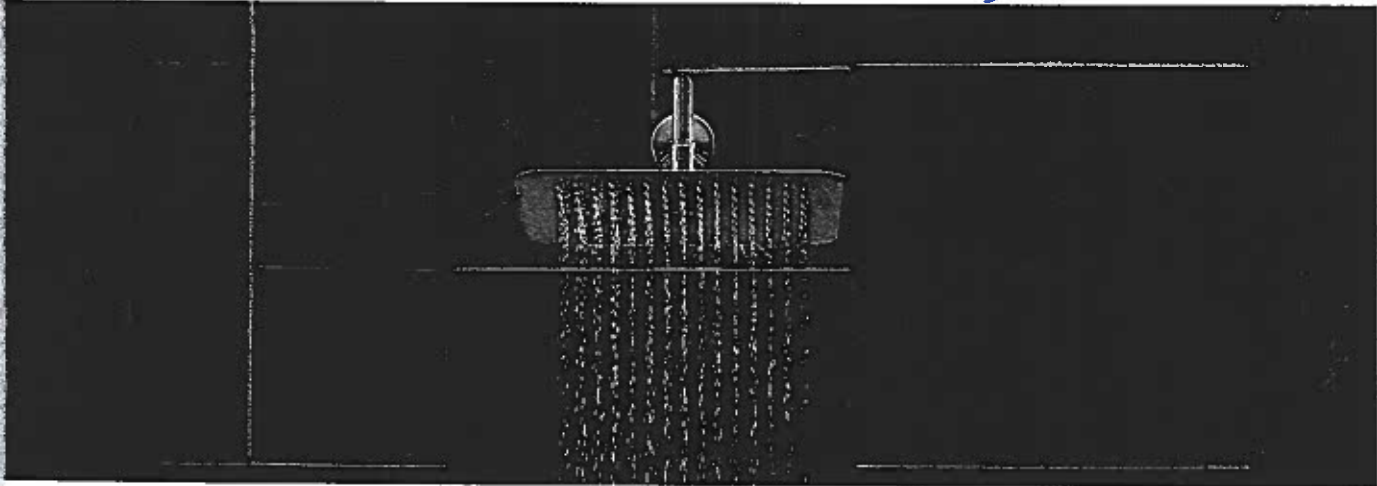
All of the finished sale and/or make and subject to normal construction of the areas. Sales specifications, floor plans and conditions are subject to change without notice. Drawings may show details that may not be included in the data price. Plans may be revised. Factory and/or alterations may apply. Contact a sales advisor for further details. All drawings are at 1/8" = 1'-0". All rights reserved. © 2015. All rights reserved. © 2015. All rights reserved.

VALERY HOMES

Rainshowers

Lot 45 (15) 70
Aug 24, 22

SHOWERING



9.5" Rainshower with Immersion™

S1001

Chrome \$606.05



Chrome



10" Rainshower with Immersion™

S1003

Chrome \$635.95



Chrome



12" Rainshower with Immersion™

S1002

Chrome \$643.48



Chrome



12" Rainshower with Immersion™

S1004

Chrome \$673.44



Chrome

Sealer Chrome (C) model, use model number only.

Showering Arms & Flanges

Lot 45
Aug 24, 22

SHOWERING



Overhead Shower Arm

123815
Chrome \$100.40
Oil Rubbed Bronze \$172.16



LifeShine® Brushed Nickel (BN),
Oil Rubbed Bronze (ORB), Matte Black (BL),
Brushed Gold (BG)



8" Curved Shower Arm

123815
Chrome \$37.61
Oil Rubbed Bronze \$85.73
Other \$83.38



Chrome, LifeShine® Brushed Nickel (BN), LifeShine®
Polished Nickel (NL), Oil Rubbed Bronze (ORB),
Matte Black (BL), Brushed Gold (BG)



Straight Shower Arm

116651
Chrome \$67.56
Other \$122.59



LifeShine® Brushed Nickel (BN), LifeShine®
Polished Nickel (NL), Oil Rubbed Bronze (ORB),
Wrought Iron (WR), Brushed Gold (BG)



6" Straight Shower Arm

116651
Chrome \$26.34
Other \$43.30



Chrome, LifeShine® Brushed Nickel (BN), LifeShine®
Polished Nickel (NL), Oil Rubbed Bronze (ORB),
Wrought Iron (WR), Brushed Gold (BG)



Round Shower Flange

AT2199
Chrome \$11.85
Other \$30.71
Matte Black /
Brushed Nickel \$32.49



LifeShine® Brushed Nickel (BN),
LifeShine® Polished Nickel (NL),
Matte Black (BL), Brushed Gold (BG)



Square Shower Flange

147572
Chrome \$24.21
Other \$48.42



Chrome, LifeShine® Brushed Nickel (BN)



Round Shower Flange

AT2199
Chrome \$15.07
Other \$40.14



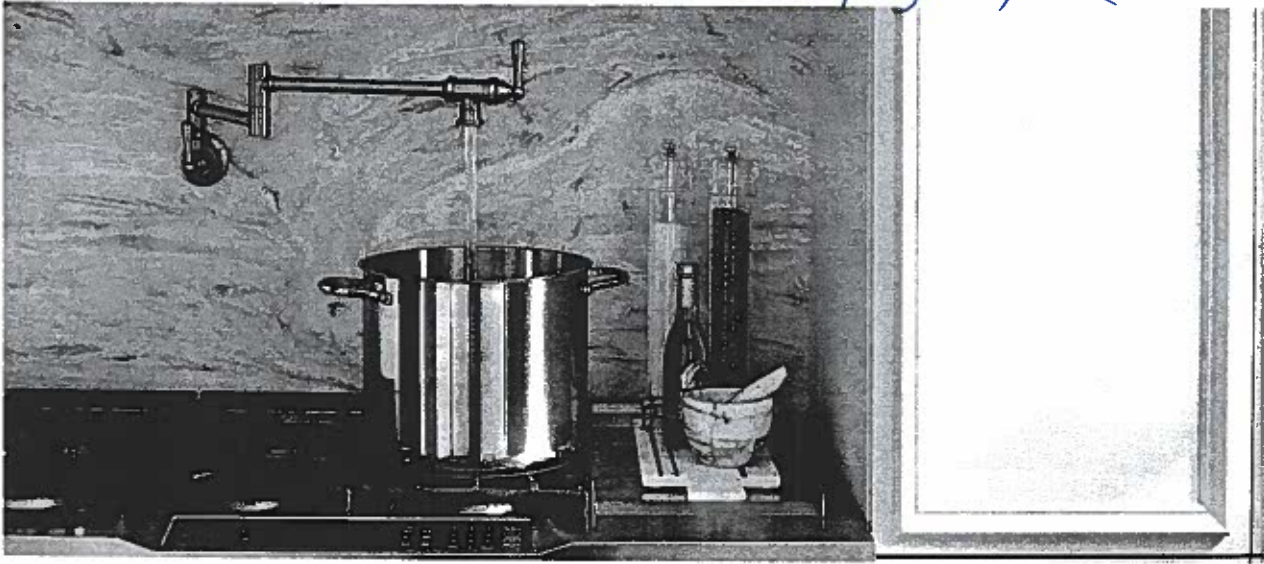
Chrome, LifeShine® Brushed Nickel (BN), LifeShine®
Polished Nickel (NL), Oil Rubbed Bronze (ORB),
Wrought Iron (WR), Brushed Gold (BG)

Combine the model number with one of these finish letter(s): LifeShine® Brushed Nickel (BN), Oil Rubbed Bronze (ORB), LifeShine® Polished Nickel (NL), Wrought Iron (WR), Brushed Gold (BG) & Matte Black (BL).
If Chrome (C) model, use model number only.

Fillers

Lot 45 hs 8
Aug 24, 22

KITCHEN



ERS



Modern Two Handle Pot Filler
Faucet with Dual Shut-Offs

\$1,132.12
\$1,582.69

Installation only
BLS

BG - Brushed Gold



Modern Two Handle Pot Filler
Faucet with Dual Shut-Offs

S665

Chrome \$1,132.12
Other \$1,582.69

BL

Single hole installation only
Not available in ORB & NL

FINISH OPTIONS



Chrome (C), Spot Resist Stainless (SRS), Matte Black (BL),
Oil Rubbed Bronze (ORB), LifeShine® Polished Nickel (NL),
Black Stainless (BLS)

To order, combine the model number with one of these finish letter(s): Spot Resist
Stainless (SRS), Matte Black (BL), Oil Rubbed Bronze (ORB), LifeShine® Polished
Nickel (NL) & Black Stainless (BLS).
To order Chrome (C) models, use model number only.