

CONSTRUCTION SUMMARY

Joshua Creek - 54 - 1 - BIRCH HILL (42-01) C

Registere Plan Number: Municipal Address: Closing: **18-Oct-23**

BONUS

Inv.505	1 - BONUS PACKAGE: \$5,000.00 WORTH OF UPGRADES FROM VALERY HOMES DÉCOR
19	CENTRE IS BEING APPLIED TOWARD THE STRUCTURAL APPOINTMENT
Line 10390	Note:
17Jan23 / 12Feb23	

CEILING

Inv.505	1 - SMOOTH CEILING THROUGHOUT SECOND FLOOR
14	
Line 10261	Note:
17Jan23 / 12Feb23	

CONSTRUCTION

Inv.505	1 - MAIN FLOOR: INCREASE CEILING HEIGHT BY 2 FEET, 10 ft TO 12 ft)
2	
Line 10247	Note:
17Jan23 / 12Feb23	

ELECTRICAL

Inv.505	1 - KITCHEN: INSTALL ELECTRICAL - DEDICATED 15 AMP 120 V FOR FREEZER
5	
Line 10250	Note:
17Jan23 / 12Feb23	

Inv.505	1 - ELECTRICAL - DEDICATED 15 AMP 120 V FOR FUTURE TV ABOVE FIREPLACE
9	
Line 10254	Note:
17Jan23 / 12Feb23	

Inv.505	1 - CEILING FIXTURE - RELOCATE STANDARD CEILING FIXTURE
11	
Line 10255	Note: Location may vary slightly due to joist location
17Jan23 / 12Feb23	

Inv.505	1 - CEILING LIGHT ROUGH IN - FOR 1 CEILING LIGHT - ON SEPARATE SWITCH (DOES NOT
12	INCLUDE FIXTURE)
Line 10256	Note: Location may vary slightly due to joist location
17Jan23 / 12Feb23	

Inv.505	1 - KITCHEN: INSTALL ELECTRICAL - DEDICATED 15 AMP 120 V FOR MICROWAVE IN
6	ISLAND
Line 10265	Note:
17Jan23 / 12Feb23	

Inv.505	1 - KITCHEN: INSTALL ELECTRICAL - ROUGH-IN FOR 50 AMP, 4 WIRE FOR DUAL FUEL
4	RANGE
Line 10386	Note:
17Jan23 / 12Feb23	

Inv.505	1 - ELECTRICAL - ROUGH-IN FOR AC UNIT. INCLUDES BREAKER & LOW VOLTAGE WIRE
17	
Line 10388	Note:
17Jan23 / 12Feb23	

EXTERIOR DOOR

Inv.505	1 - FRONT DOOR: EXTERIOR DOOR - ADDITIONAL FRONT DOOR TO MAKE DOUBLE DOOR
18	ENTRY- WITH GLASS
Line 10389	Note: SIDE LIGHTS TO BE REMOVED TO MAKE ROOM FOR DOUBLE GLASS DOORS
17Jan23 / 12Feb23	

CONSTRUCTION SUMMARY

Joshua Creek - 54 - 1 - BIRCH HILL (42-01) C

Registere Plan Number: Municipal Address: Closing: **18-Oct-23**

HVAC

Inv.505 8	1 - KITCHEN: INSTALL GAS PIPING AND OTHER - UPGRADE STOVE VENT FROM STANDARD 6 INCH TO 10 INCH
Line 10253	Note:
17Jan23 / 12Feb23	
Inv.505 3	1 - KITCHEN: INSTALL GAS PIPING AND OTHER - GAS LINE R/I FOR MAIN FLOOR - STOVE
Line 10248	Note:
17Jan23 / 12Feb23	

MISCELLANEOUS

Inv.505 20	1 - Purchaser has attended a Structural appointment at the Decor Centre & has DECLINED any additional upgrades and accepts and acknowledges that there will be no further structural changes/additions/deletions to be made upon signing.
Line 10391	Note: Purchasers are aware & accept that ANY changes made to upgrades after signing this Purchasers Extra Form are subject to an administration fee of \$850.00. PLUS a possible 10% holdback fee
17Jan23 / 12Feb23	
Purchaser accepts & acknowledges that all upgrades are to be approved by construction before the invoice is accepted	

PLUMBING

Inv.505 7	1 - KITCHEN: INSTALL EXTRA ROUGH-IN LINE FOR FRIDGE ICE MAKER WITH SHUT-OFF. FOR FRIDGE ONLY
Line 10252	Note:
17Jan23 / 12Feb23	
Inv.505 15	1 - KITCHEN: ADDITIONAL PLUMBING-WATER CONNECTION WHEN ADDING POT FILLER
Line 10262	Note:
17Jan23 / 12Feb23	
Inv.505 16	1 - KITCHEN: INSTALL POT FILLER
MOEN MODERN TWO HANDLE POT FILLER FAUCET WITH DUAL SHUT OFFS	
S665 SRS SPOT RESIST STAINLESS	
Line 10263	Note:
17Jan23 / 12Feb23	

VACCUM/BELL

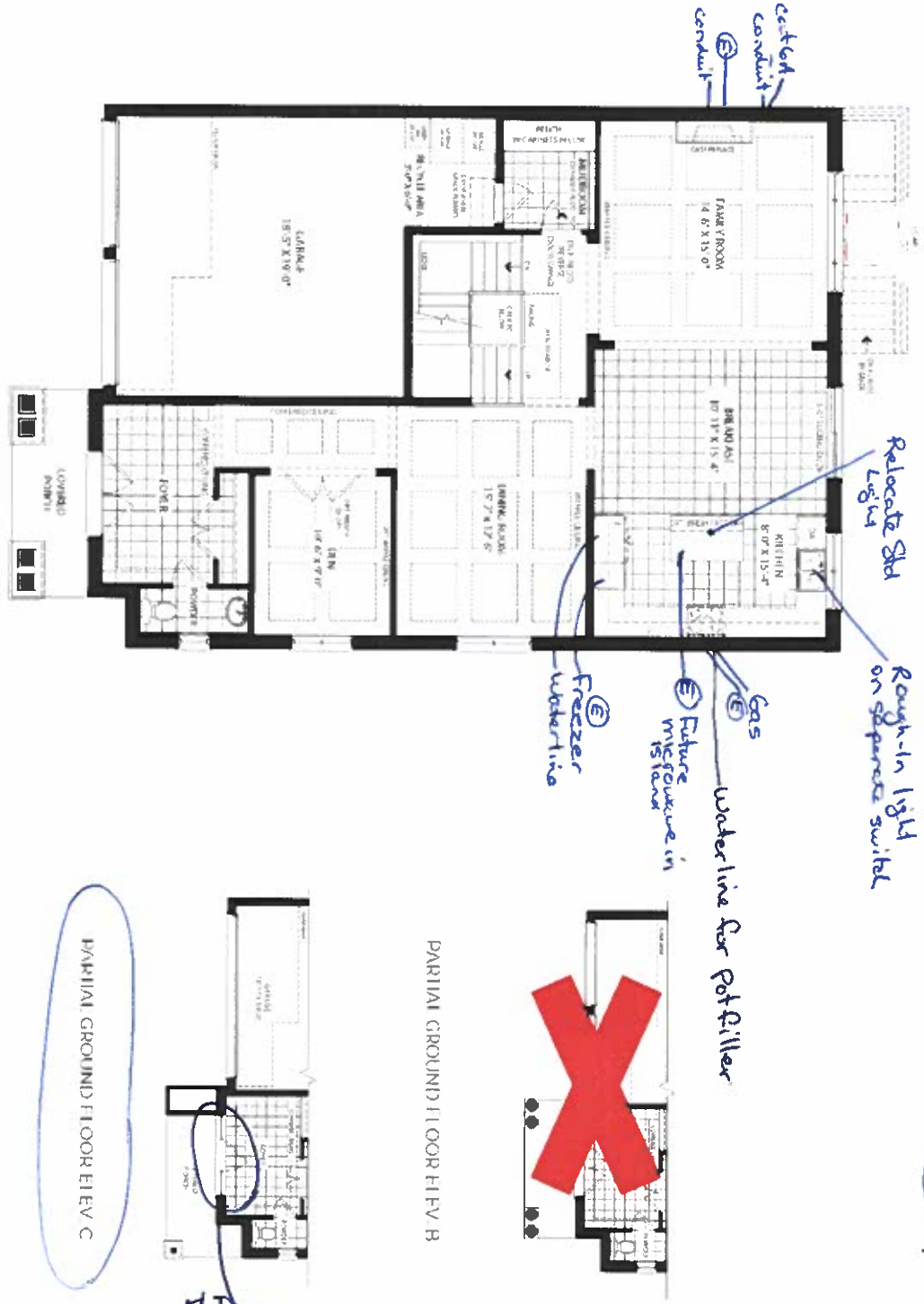
Inv.505 1	1 - CAT 6A LOCATION SKETCH. LOCATIONS MAY VARY SLIGHTLY DUE TO JOIST LOCATIONS (STD)
Line 10246	Note:
17Jan23 / 12Feb23	
Inv.505 10	1 - FAMILY ROOM: INSTALL 1 1/4" ORANGE FLEX CONDUIT ABOVE FIREPLACE FOR FUTURE TV
Line 10387	Note: LOCATIONS MAY VARY SLIGHTLY DUE TO JOIST LOCATIONS
17Jan23 / 12Feb23	

WINDOWS

Inv.505 13	3 - BASEMENT: BASEMENT WINDOW - ENLARGE THREE (3) STANDARD WINDOWS TO- 36 X 30
Line 10258	Note: MAY REQUIRE A WINDOW WELL
17Jan23 / 12Feb23	

Lot 54
Jan 26, 23

• Increase ceiling height to 12' on main floor



42-7

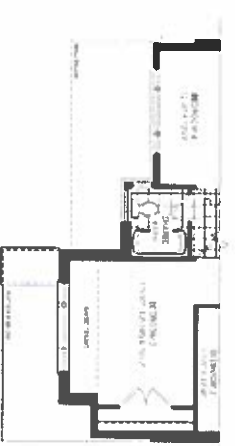
CC

23, 24, 25



- Smooth Ceilings
- 2nd Floor

SECOND FLOOR PLINVA



PARTIAL SECOND FLOOR FIVE C

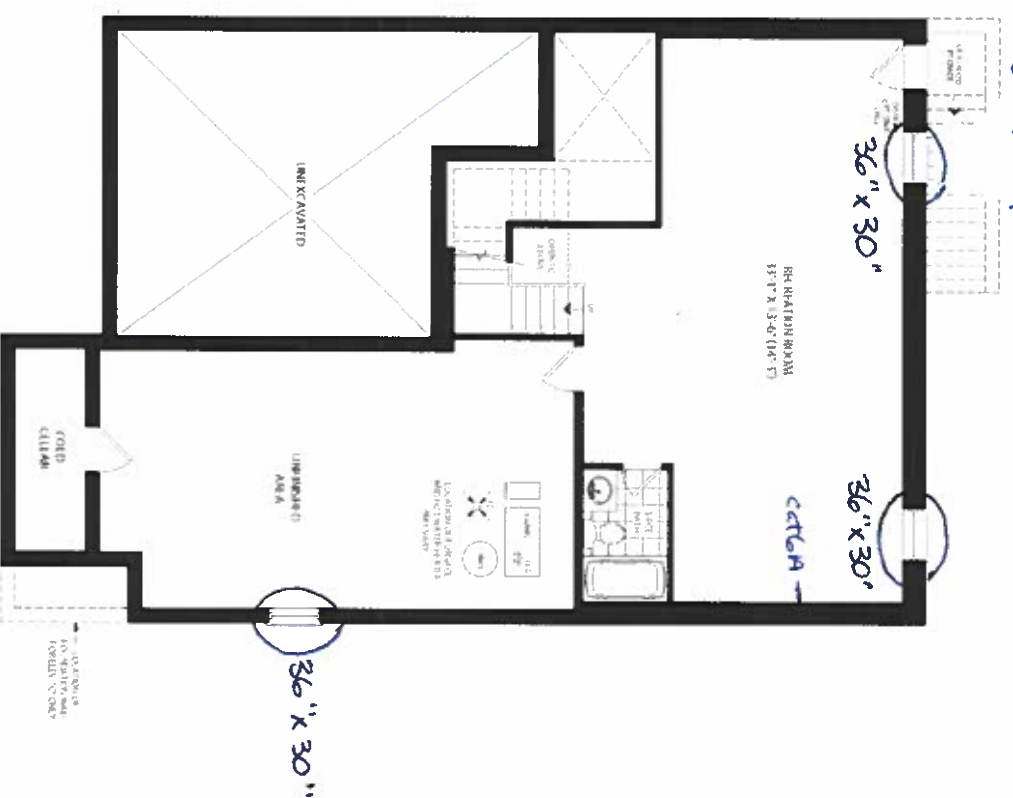
MONTAGE

[illegible]

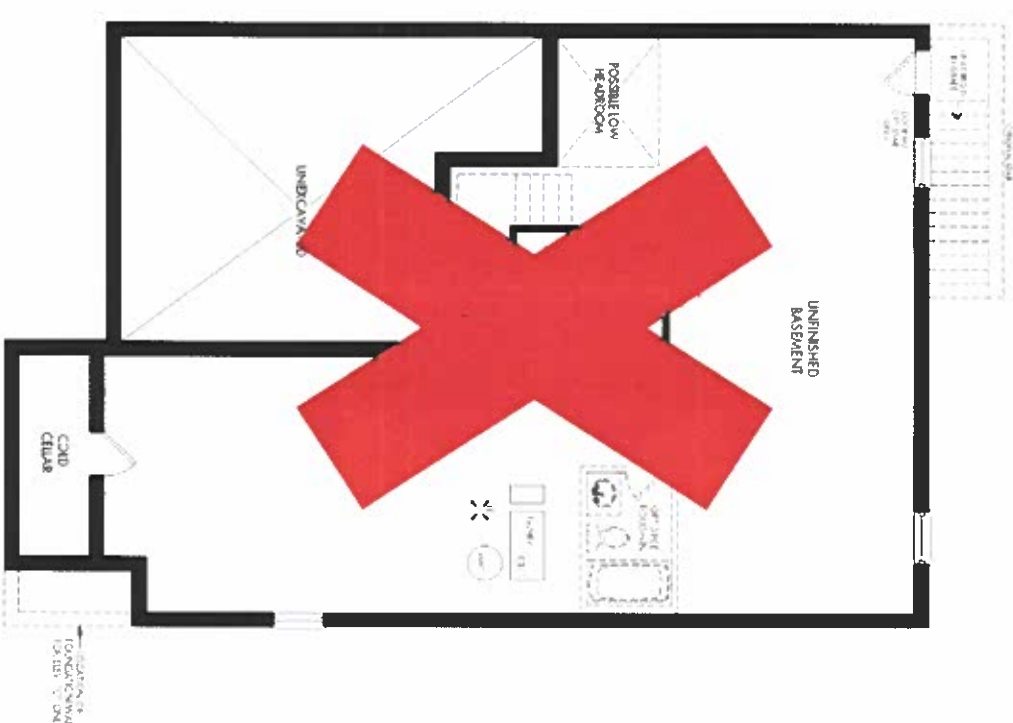
VALERY

42-1

Build
back-up



FINISHED BASF-MET-FLUVA, B & C



UNFINISHED BASEMENT FLEV. A, B & C

CC

Jan 26, 23

MONTAGE

dimensionality reduction and subsequent clustering. The dimensionality reduction was performed using principal component analysis (PCA) to reduce the dimensionality of the data to 10 principal components. The clustering was performed using hierarchical clustering with Ward's method. The results of the clustering analysis are shown in Table 1. The clustering analysis identified four distinct clusters of genes, which were labeled as Cluster 1, Cluster 2, Cluster 3, and Cluster 4. Cluster 1 contained genes that were highly expressed in the control group, while Cluster 2 contained genes that were highly expressed in the treatment group. Cluster 3 contained genes that were highly expressed in the control group, while Cluster 4 contained genes that were highly expressed in the treatment group. The results of the clustering analysis suggest that the treatment group may have a distinct gene expression profile compared to the control group.

工
作
日
間
休
息

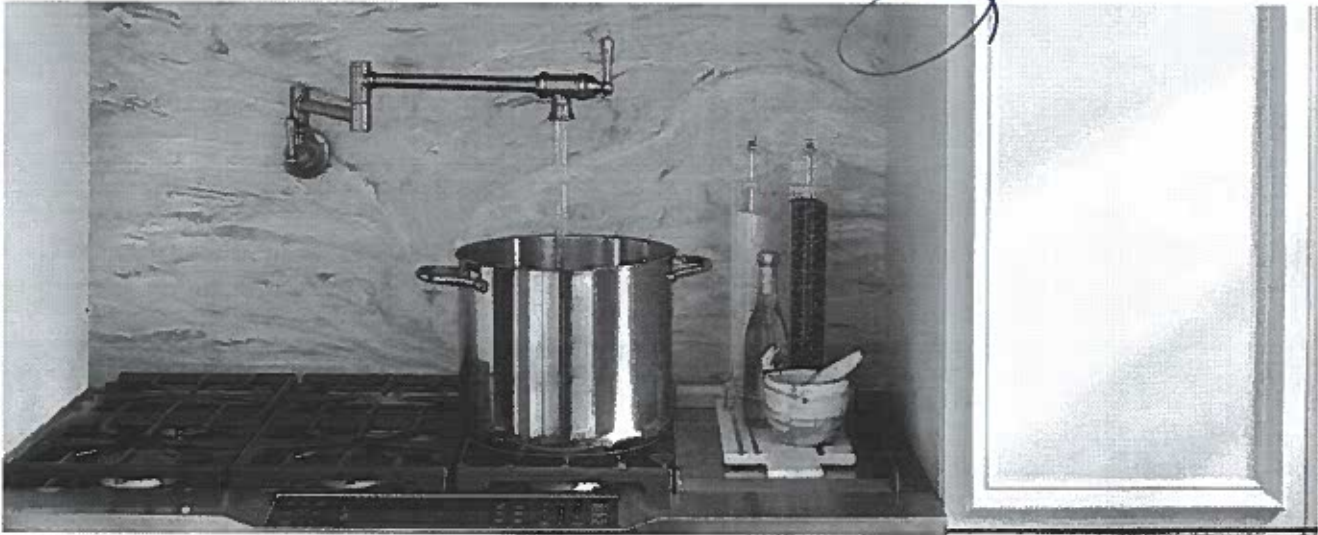
Pot Fillers

Not 54



Jan 26, 23

KITCHEN



POT FILLERS



Traditional Two Handle Pot Filler
Faucet with Dual Shut-Offs

S664

Chrome	\$1,230.56
Other	\$1,720.31

Single hole installation only
Not available in BLS



Modern Two Handle Pot Filler
Faucet with Dual Shut-Offs

S665

Chrome	\$1,230.56
Other	\$1,720.31
Black Stainless	\$1,892.44

Single hole installation only
Not available in ORB & NL

FINISH OPTIONS



Chrome (C), Spot Resist Stainless (SRS), Matte Black (BL),
Oil Rubbed Bronze (ORB), LifeShine® Polished Nickel (NL),
Black Stainless (BLS)

To order, combine the model number with one of these finish letter(s). Spot Resist
Stainless (SRS), Matte Black (BL), Oil Rubbed Bronze (ORB), LifeShine® Polished
Nickel (NL) & Black Stainless (BLS)
To order Chrome (C) models, use model number only.