

CONSTRUCTION SUMMARY

Joshua Creek - 224-6**MILLCROFT (TH-02.BLK236) A CORNER**

Registere Plan Number: Municipal Address:

BONUS

Inv.472 18 Line 9618 25Oct22 / 25Oct22	1 - BONUS PACKAGE: \$5,000.00 WORTH OF UPGRADES FROM VALERY HOMES DÉCOR CENTRE IS BEING APPLIED TOWARD THE STRUCTURAL APPOINTMENT Note:
---	--

ELECTRICAL

Inv.472 7 Line 9606 25Oct22 / 25Oct22	1 - KITCHEN: INSTALL RECEPTACLES - ADDITIONAL 15 AMP 120 VOLT RECEPTACLE FOR GAS STOVE Note:
--	---

Inv.472 9 Line 9609 25Oct22 / 25Oct22	1 - KITCHEN: INSTALL ELECTRICAL - ROUGH-IN FOR DEDICATED 30 - 40 AMP 220 V BUILT-IN WALL OVEN Note:
--	--

Inv.472 10 Line 9610 25Oct22 / 25Oct22	1 - ELECTRICAL - ROUGH-IN FOR AC UNIT. INCLUDES BREAKER & LOW VOLTAGE WIRE Note:
---	---

HVAC

Inv.472 6 Line 9605 25Oct22 / 25Oct22	1 - KITCHEN: INSTALL GAS PIPING AND OTHER - GAS LINE R/I FOR MAIN FLOOR - STOVE Note:
--	--

INTERIOR DOOR & TRIM

Inv.472 3 Line 9604 25Oct22 / 25Oct22	1 - INTERIOR DOOR HARDWARE, PACE LINE IN MATTE BLACK. INCL. EXTERIOR DOOR, NOT GRIP SET. PRICE IS EACH Note:
--	---

Inv.472 4 Line 9620 25Oct22 / 25Oct22	8 - BASEMENT & LOFT: INSTALL LINCOLN PARK DOOR, 1 PANEL, HERITAGE 84" H Note:
--	--

Inv.472 5 Line 9621 25Oct22 / 25Oct22	15 - MAIN FLOOR & SECOND FLOOR: INSTALL LINCOLN PARK DOOR, 1 PANEL, HERITAGE 96" H Note:
--	---

INTERIOR DOORS & TRIM

Inv.472 17 Line 9617 25Oct22 / 25Oct22	12 - 2ND FLOOR: INTERIOR DOOR & TRIM - EXTENDED HEIGHT DOOR 96 INCH - 2ND FLOOR, UPGRADE FROM STD. 84"- 12 DOORS IN TOTAL Note:
---	--

MISCELLANEOUS

Inv.472 19 Line 9619 25Oct22 / 25Oct22	1 - Purchaser has attended a Structural appointment at the Decor Centre & has DECLINED any additional upgrades and accepts and acknowledges that there will be no further structural changes/additions/deletions to be made upon signing Note: Purchaser accepts & acknowledges that all upgrades are to be approved by construction before the invoice is accepted.
---	---

Joshua Creek - 224-6 MILLCROFT (TH-02.BLK236) A CORNER

Registere Plan Number: Municipal Address:

PLUMBING

Inv.472 8	1 - KITCHEN: INSTALL EXTRA ROUGH-IN LINE FOR FRIDGE ICE MAKER WITH SHUT-OFF
Line 9607	Note:
25Oct22 / 25Oct22	
Inv.472 11	1 - 3 PIECE BATHROOM - EXTRA 3-PIECE FINISHED BATH, COMPLETE
Line 9611	Note:
25Oct22 / 25Oct22	
Inv.472 12	1 - KITCHEN: ADD ADDITIONAL PLUMBING WHEN ADDING POT FILLER
Line 9612	Note:
25Oct22 / 25Oct22	
Inv.472 13	1 - KITCHEN: INSTALL POT FILLER S665- CHROME
	MOEN MODERN TWO HANDLE POT FILLER FAUCET WITH DUAL SHUT-OFFS.
	*NOTE, PURCHASER WILL SELECT COLOUR AT THE TIME OF COLOURS. ADDITIONAL MONEY MAY BE REQUIRED
Line 9613	Note:
25Oct22 / 25Oct22	
Inv.472 14	1 - PRIMARY ENSUITE: INSTALL PLUMBING FOR RAIN SHOWERHEAD FROM CEILING, MUST PURCHASE SHOWERHEAD. IN LIEU OF STANDARD SHOWERHEAD ON WALL
Line 9614	Note:
25Oct22 / 25Oct22	
Inv.472 15	1 - PRIMARY ENSUITE: INSTALL RAIN SHOWERHEAD
	MOEN 12"RAINSHOWER WITH IMMERSION
	S1004 CHROME
Line 9615	Note:
25Oct22 / 25Oct22	
Inv.472 16	1 - BASEMENT: LAUNDRY: INSTALL ROUGH-IN LAUNDRY ROOM IN BASEMENT- INCL. PLUMBING, ELECTRICAL, VENTING. TILED FLOOR MUST BE PURCHASED IF ROUGH-IN IS ON CARPET. TILES ARE \$50/ SQ FOOT.*LAUNDRY TUB R/I NOT INCLUDED
Line 9616	Note:
25Oct22 / 25Oct22	

VACCUM/BELL

Inv.472 1	1 - CAT 6A LOCATION SKETCH. LOCATIONS MAY VARY SLIGHTLY DUE TO JOIST LOCATIONS
Line 9600	Note:
25Oct22 / 25Oct22	

WINDOWS

Inv.472 2	1 - BASEMENT: BASEMENT WINDOW - ENLARGE ONE (1) STANDARD WINDOW TO- 36 X 30
Line 9601	Note:
25Oct22 / 25Oct22	

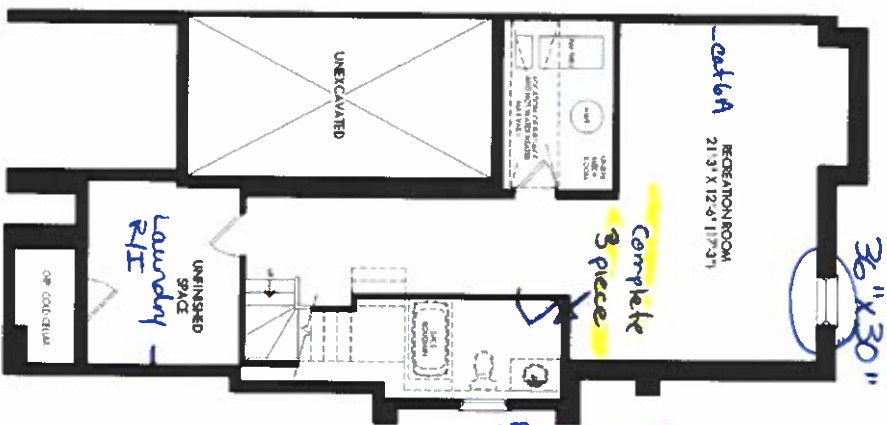
TH-2 CORNER, BLOCK 236
MILLCROFT
ELEV A-CORNER 3,224 SQ. FT.

PARTIAL OPTIONAL KITCHEN

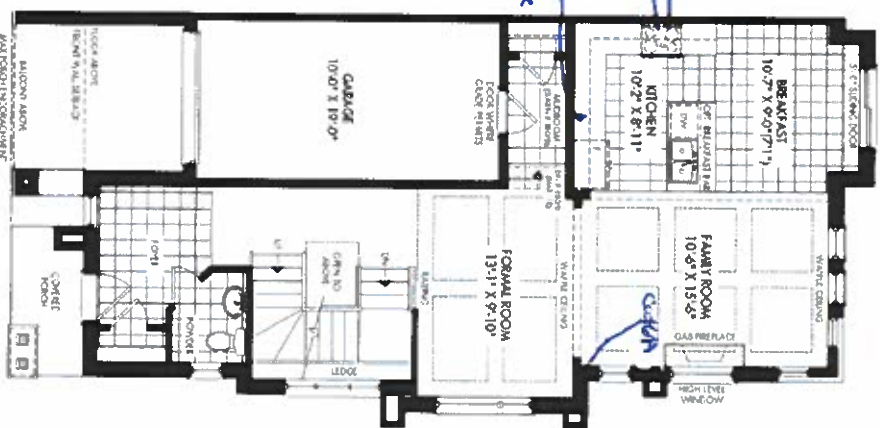


Lot 224-6
4425 SCHEDULE "H"

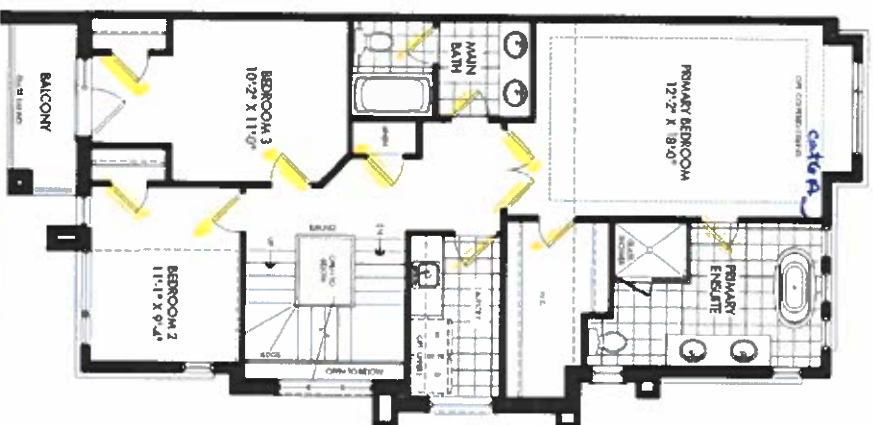
FINISHED
BASEMENT ELEV. A



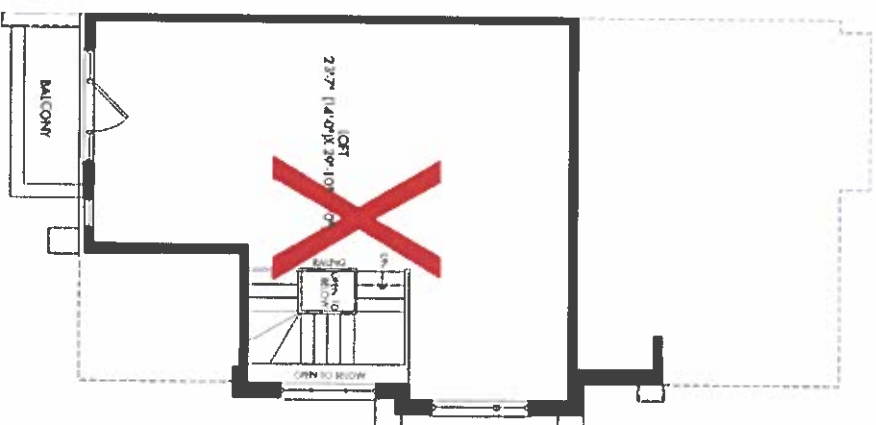
GROUND FLOOR ELEV. A



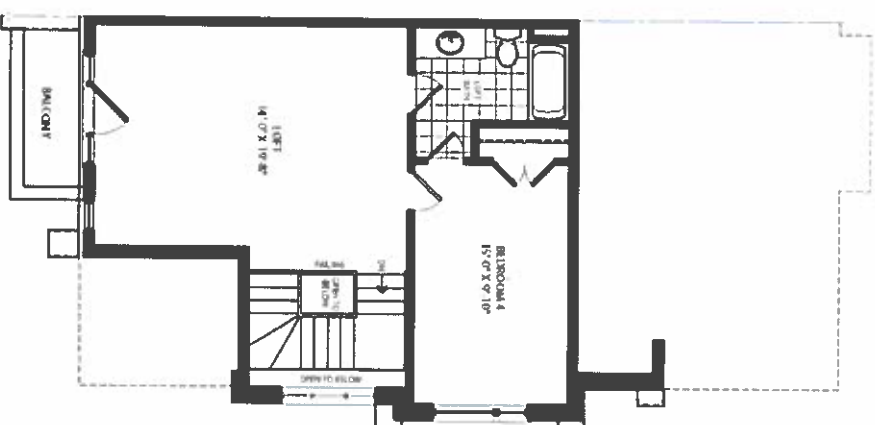
SECOND FLOOR ELEV. A



LOFT PLAN ELEV. A



OPT. LOFT PLAN ELEV. A



JOSHUA CREEK

MONTAGE

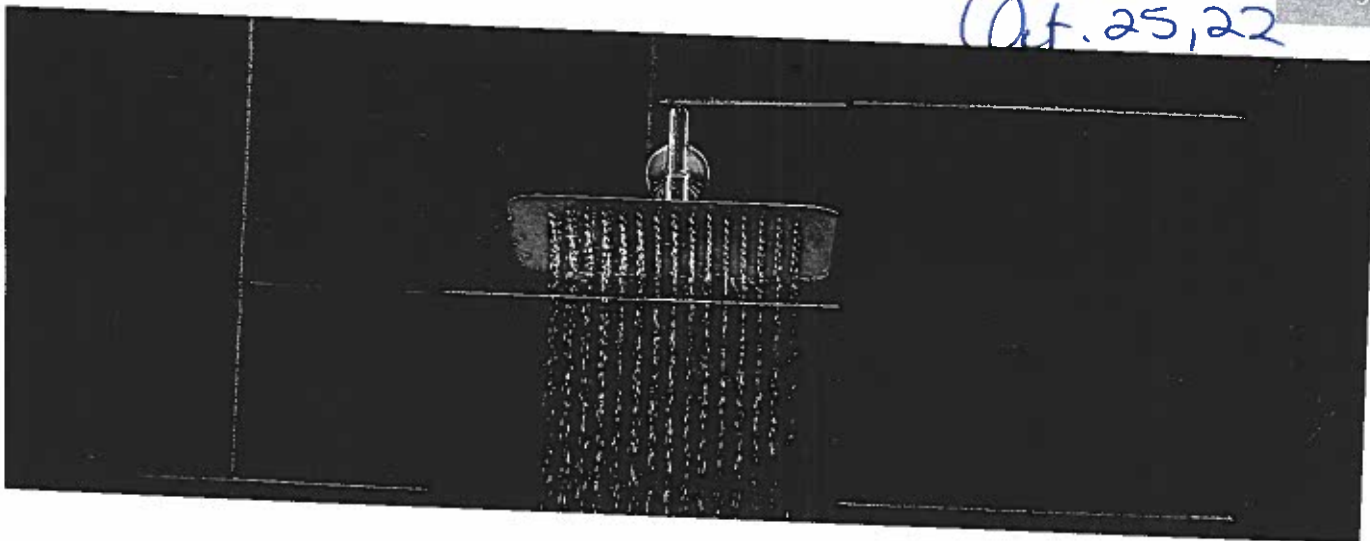
All dimensions are shown in feet and inches. Dimensions may vary. Dimensions may exceed the usable floor area. Sizes, speed, color, floor plan, and terms and conditions are subject to change without notice. Plans may show optional features which may not be included in the base price. Plans may be viewed. Balcony and terrace view areas may vary. Contact a sales advisor for full details. All renderings are artist's concepts. E. & O. E. All rights reserved. Gray Homes.

VALERY
HOMES

Rainshowers

Lot 224-6 (10/25/22)

SHOWERING



Rainshower with
Immersion™

DOT

Price \$606.05



DOT



10" Rainshower with
Immersion™

S1003

Chrome \$635.95



Chrome



Rainshower with
Immersion™

DOT

Price \$643.48



12" Rainshower with
Immersion™

S1004

Chrome \$673.44



Chrome

Primary
Ensuite

For the IC model, use model number only.

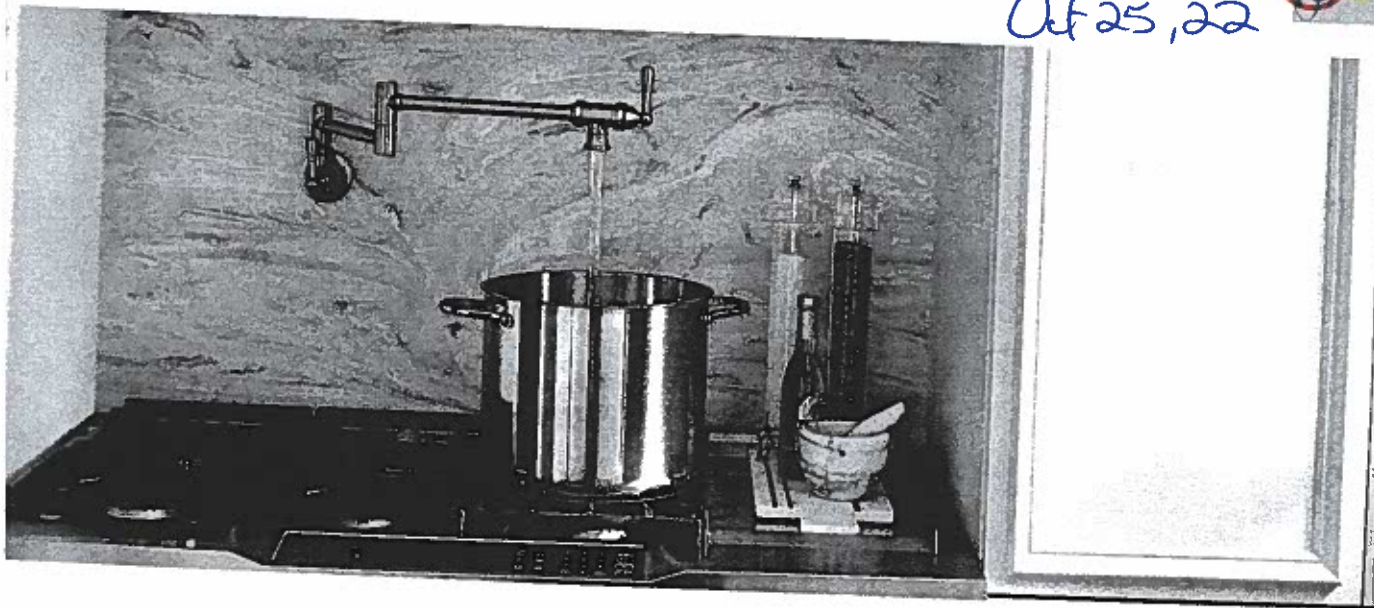
Pot Fillers

Lot 224-6

Oct 25, 22



KITCHEN



POT FILLERS



Additional Two Handle Pot Filler
Faucet with Dual Shut-Offs

S4

Chrome	\$1,132.12
Other	\$1,582.69

Single hole installation only
Not available in BLS

BG - Brushed Gold



Modern Two Handle Pot Filler
Faucet with Dual Shut-Offs

S665

* Chrome	\$1,132.12
Other	\$1,582.69
Black Stainless	\$1,741.04

Single hole installation only
Not available in ORB & NL

FINISH OPTIONS



Chrome (C), Spot Resist Stainless (SRS), Matte Black (BL),
Oil Rubbed Bronze (ORB), LifeShine® Polished Nickel (NL),
Black Stainless (BLS)

To order, combine the model number with one of these finish letter(s): Spot Resist
Stainless (SRS), Matte Black (BL), Oil Rubbed Bronze (ORB), LifeShine® Polished
Nickel (NL) & Black Stainless (BLS).
To order Chrome (C) models, use model number only.