

CONSTRUCTION SUMMARY

Joshua Creek - 224-5 ARBOURVIEW (TH-02) A

Registere Plan Number: Municipal Address:

ELECTRICAL

Inv.448 6 Line 9014	1 - KITCHEN: INSTALL CEILING FIXTURE - RELOCATE STANDARD CEILING FIXTURE. LOCATIONS MAY VARY SLIGHTLY DUE TO JOIST LOCATIONS Note:
15Aug22 / 22Aug22	
Inv.448 7 Line 9015	4 - KITCHEN: INSTALL FOUR (4) POT LIGHT - 4" LED NON-INSULATED CEILINGS, LOCATIONS MAY VARY SLIGHTLY DUE TO JOIST LOCATIONS Note:
15Aug22 / 22Aug22	
Inv.448 8 Line 9016	6 - FAMILY ROOM: INSTALL SIX (6) POT LIGHT - 4" LED NON-INSULATED CEILINGS, LOCATIONS MAY VARY SLIGHTLY DUE TO JOIST LOCATIONS. DELETE STANDARD LIGHT Note:
15Aug22 / 22Aug22	
Inv.448 9 Line 9017	4 - DEN: INSTALL FOUR (4) POT LIGHT - 4" LED NON-INSULATED CEILINGS, LOCATIONS MAY VARY SLIGHTLY DUE TO JOIST LOCATIONS. DELETE STANDARD LIGHT Note:
15Aug22 / 22Aug22	
Inv.448 10 Line 9018	1 - GARAGE: RECEPTACLES - EV STATION DEDICATED 240 VOLT RECEPTACLE Note:
15Aug22 / 22Aug22	
Inv.448 11 Line 9019	1 - PRIMARY ENSUITE: INSTALL CEILING LIGHT ROUGH IN - FOR 1 CEILING LIGHT - ON SEPARATE SWITCH (DOES NOT INCLUDE FIXTURE) Note:
15Aug22 / 22Aug22	
Inv.448 12 Line 9020	1 - KITCHEN: INSTALL CABINET LIGHTING - UNDERMOUNT T-5 LED VALANCE LIGHT. WOOD VALANCE MUST BE PURCHASED AT THE TIME OF COLOURS Note:
15Aug22 / 22Aug22	
Inv.448 13 Line 9021	1 - ELECTRICAL - ROUGH-IN FOR DEDICATED 15 AMP 120 V FOR DISHWASHER Note:
15Aug22 / 22Aug22	
Inv.448 4 Line 9012	1 - KITCHEN: INSTALL RECEPTACLES - ADDITIONAL 15 AMP 120 VOLT RECEPTACLE FOR STOVE Note:
15Aug22 / 22Aug22	
Inv.448 16 Line 9025	1 - FAMILY ROOM: ELECTRICAL - ROUGH-IN FOR FUTURE TV ABOVE FIREPLACE Note:
15Aug22 / 22Aug22	
Inv.448 18 Line 9118	1 - KITCHEN: INSTALL ELECTRICAL - ROUGH-IN FOR 15 AMP ABOVE STOVE FOR MICROWAVE Note:
15Aug22 / 22Aug22	
Inv.448 19 Line 9123	1 - ELECTRICAL - ROUGH-IN FOR AC UNIT. INCLUDES BREAKER & LOW VOLTAGE WIRE Note:
15Aug22 / 22Aug22	

HVAC

CONSTRUCTION SUMMARY

Joshua Creek - 224-5 ARBOURVIEW (TH-02) A

Registere Plan Number: Municipal Address:

Inv.448 3	1 - KITCHEN: INSTALL GAS PIPING AND OTHER - GAS LINE R/I FOR MAIN FLOOR - STOVE
Line 9011	Note:
15Aug22 / 22Aug22	

Inv.448 1	1 - CAT 6A LOCATION SKETCH. LOCATIONS MAY VARY SLIGHTLY DUE TO JOIST LOCATION
Line 9009	Note:
15Aug22 / 22Aug22	

MISCELLANEOUS

Inv.448 21	1 - Purchaser has attended a Structural appointment at the Decor Centre & has DECLINED any additional upgrades and accepts and acknowledges that there will be no further structural changes/additions/deletions to be made upon signing
Line 9121	Note:
15Aug22 / 22Aug22	

PLUMBING

Inv.448 5	1 - KITCHEN: INSTALL EXTRA ROUGH-IN LINE FOR FRIDGE ICE MAKER WITH SHUT-OFF
Line 9013	Note:
15Aug22 / 22Aug22	

Inv.448 20	1 - BASEMENT: 3 PIECE BATHROOM - EXTRA 3-PIECE FINISHED BATH, COMPLETE
Line 9119	Note:
15Aug22 / 22Aug22	

Inv.448 14	1 - BACKFLOW PREVENTER VALVE
Line 9022	Note:
15Aug22 / 22Aug22	

VACCUM/BELL

Inv.448 15	1 - CENTRAL VACUUM - CENTRAL VAC PIPING COMPLETE ROUGH-IN TO GARAGE - TWO OUTLETS PER FLOOR AND ONE OUTLET IN BASEMENT R/I ONLY
Line 9023	Note:
15Aug22 / 22Aug22	

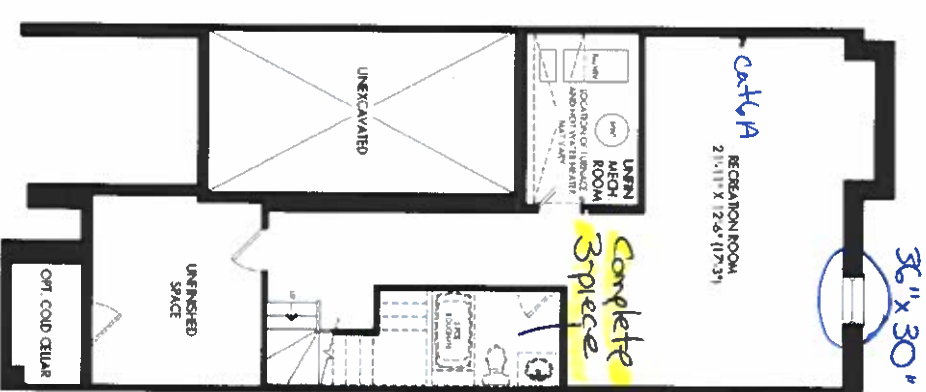
Inv.448 17	1 - FAMILY ROOM: INSTALL 1 1/4" ORANGE FLEX CONDUIT ABOVE FIREPLACE FOR FUTURE TV
Line 9026	Note:
15Aug22 / 22Aug22	

WINDOWS

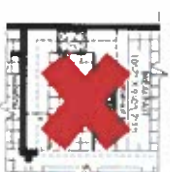
Inv.448 2	1 - BASEMENT: BASEMENT WINDOW - ENLARGE STANDARD WINDOW TO- 36 X 30
Line 9010	Note:
15Aug22 / 22Aug22	

TH-2
ARBOURVIEW
ELEV A 2,903 SQ. FT.

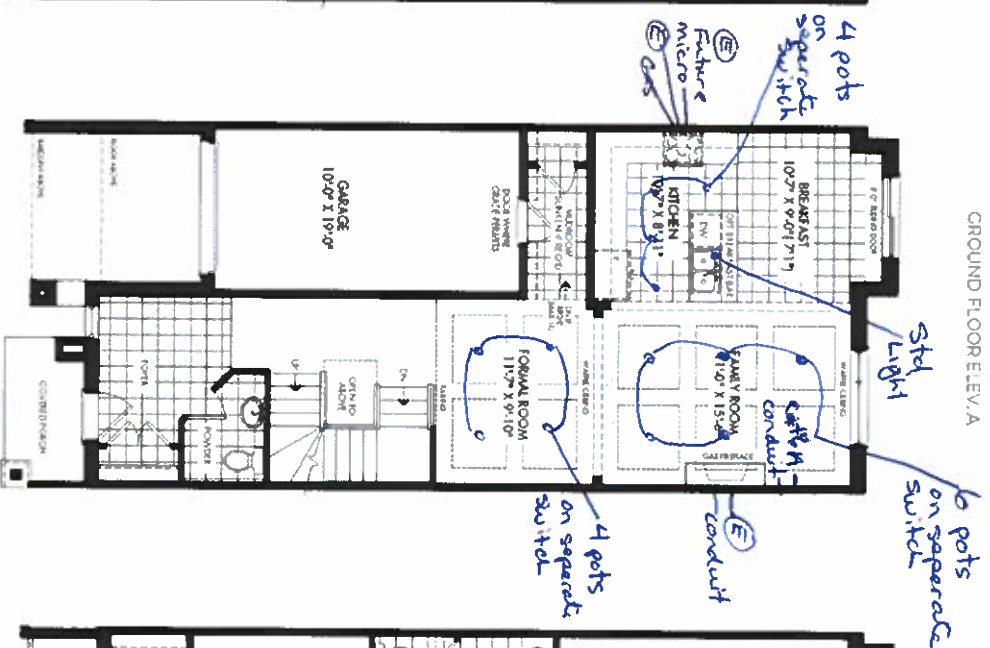
FINISHED
BASEMENT ELEV. A



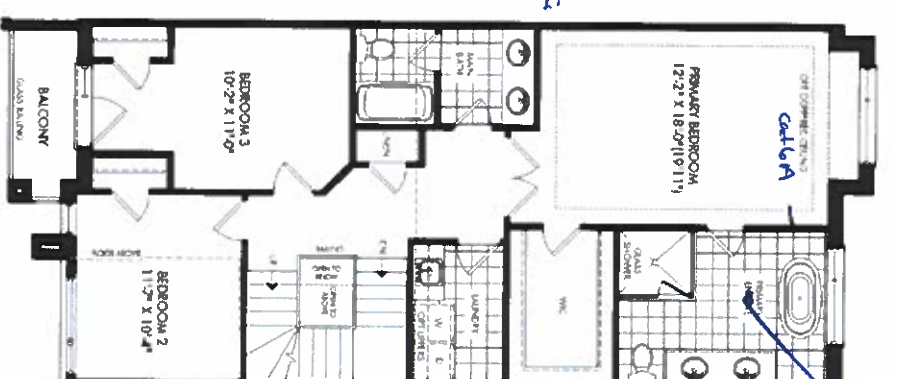
PARTIAL OPTIONAL KITCHEN



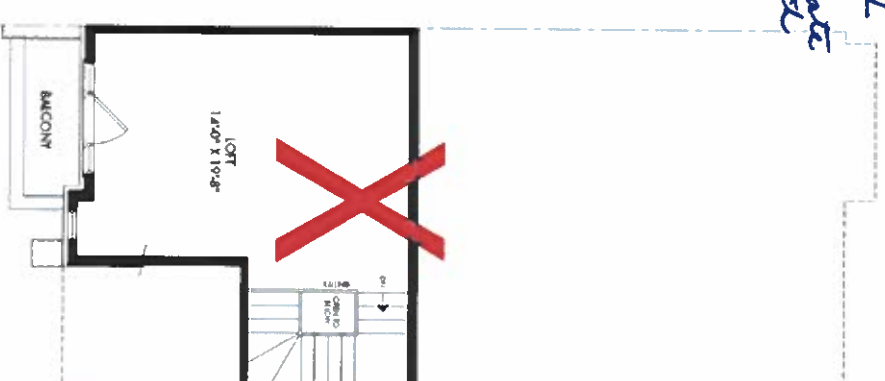
GROUND FLOOR ELEV. A



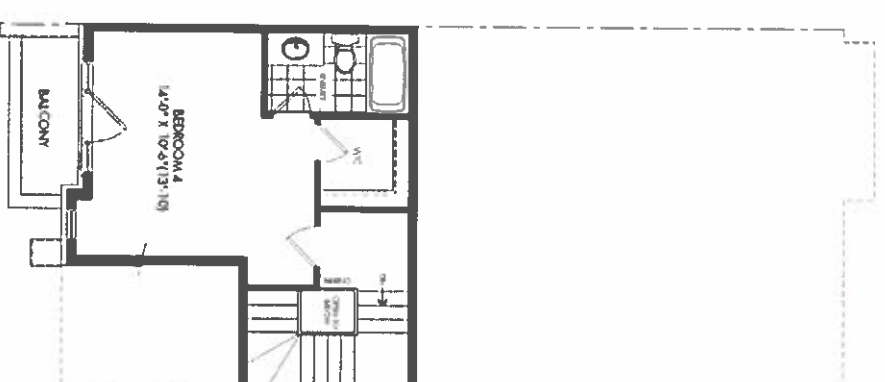
SECOND FLOOR ELEV. A



LOFT PLAN ELEV. A



OPT. LOFT PLAN ELEV. A



SCHEDULE "H"

Lot 224-5
Aug. 22, 22

JOSHUA CREEK

MONTAGE

2. dimensions are approximate and subject to normal construction variations. Dimensions may exceed the usable floor area. Some specifications, floor plans and room layouts are subject to change without notice. Drawings may show optional features which may not be included in the base price. Plans may be reviewed. Bakery and space variations may apply. Contact a salesperson for further details. All readings are within tolerance. C. & O. All rights reserved. © Valley Homes.

VALEARY
HOMES