

# CONSTRUCTION SUMMARY

**Joshua Creek - 224-3      EDGEMERE (TH-03) A**

Registere Plan Number:    Municipal Address:

## BONUS

Inv.435 16 Line 8767  26Jul22 / 1Aug22	<b>1 - BONUS PACKAGE: \$5,000.00 WORTH OF UPGRADES FROM VALERY HOMES DÉCOR CENTRE IS BEING APPLIED TOWARD THE STRUCTURAL APPOINTMENT.</b>  Note:
----------------------------------------------------	--------------------------------------------------------------------------------------------------------------------------------------------------------

## CEILING

Inv.435 14 Line 8765  26Jul22 / 1Aug22	<b>1 - BASEMENT: SMOOTH CEILING, BASEMENT</b>  Note:
----------------------------------------------------	------------------------------------------------------------

Inv.435 15 Line 8766  26Jul22 / 1Aug22	<b>1 - LOFT: SMOOTH CEILING, LOFT AREA</b>  Note:
----------------------------------------------------	---------------------------------------------------------

Inv.435 3 Line 8751  26Jul22 / 1Aug22	<b>1 - SECOND FLOOR: SMOOTH CEILING, SECOND FLOOR</b>  Note:
---------------------------------------------------	--------------------------------------------------------------------

## ELECTRICAL

Inv.435 4 Line 8752  26Jul22 / 1Aug22	<b>1 - PRIMARY BEDROOM: REINFORCE LIGHT - FOR CEILING FAN</b>  Note:
---------------------------------------------------	----------------------------------------------------------------------------

Inv.435 5 Line 8753  26Jul22 / 1Aug22	<b>1 - GARAGE: RECEPTACLES - EV STATION DEDICATED 240 VOLT RECEPTACLE</b>  Note:
---------------------------------------------------	----------------------------------------------------------------------------------------

Inv.435 7 Line 8756  26Jul22 / 1Aug22	<b>1 - KITCHEN: INSTALL RECEPTACLES - ADDITIONAL 15 AMP 120 VOLT RECEPTACLE FOR GAS STOVE</b>  Note:
---------------------------------------------------	------------------------------------------------------------------------------------------------------------

Inv.435 12 Line 8762  26Jul22 / 1Aug22	<b>1 - FAMILY ROOM: INSTALL ELECTRICAL - ROUGH-IN FOR 15 AMP FUTURE TV ABOVE FIREPLACE</b>  Note:
----------------------------------------------------	---------------------------------------------------------------------------------------------------------

## HVAC

Inv.435 1 Line 8749  26Jul22 / 1Aug22	<b>1 - CAT 6A LOCATION SKETCH. LOCATIONS MAY VARY SLIGHTLY DUE TO JOIST LOCATIONS</b>  Note:
---------------------------------------------------	----------------------------------------------------------------------------------------------------

Inv.435 8 Line 8757  26Jul22 / 1Aug22	<b>1 - KITCHEN: INSTALL GAS PIPING AND OTHER - GAS LINE R/I FOR MAIN FLOOR - STOVE</b>  Note:
---------------------------------------------------	-----------------------------------------------------------------------------------------------------

Inv.435 6 Line 8755  26Jul22 / 1Aug22	<b>1 - AIR CONDITIONER AND FLOW - THROUGH HUMIDIFIRE AND MEDIA FILTER - ANX13 - 13 SEER - R - 410A - 3.0 TON - WITH FLOW THRU HUMIDIFIER AND 5 INCH MEDIA FILTER</b>  Note:
---------------------------------------------------	-----------------------------------------------------------------------------------------------------------------------------------------------------------------------------------

## MISCELLANEOUS

# CONSTRUCTION SUMMARY

**Joshua Creek - 224-3     EDGEMERE (TH-03) A**

Registere Plan Number:    Municipal Address:

Inv.435 17	1 - Purchaser has attended a Structural appointment at the Decor Centre & has DECLINED any additional upgrades and accepts and acknowledges that there will be no further structural changes/additions/deletions to be made upon signing
Line 8768	Note:
26Jul22 / 1Aug22	

## PLUMBING

Inv.435 9	1 - BASEMENT: 3 PIECE BATHROOM - EXTRA 3-PIECE FINISHED BATH, COMPLETE
Line 8758	Note: <span style="float: right;">✱</span>
26Jul22 / 1Aug22	

Inv.435 10	1 - KITCHEN: INSTALL EXTRA ROUGH-IN LINE FOR FRIDGE ICE MAKER WITH SHUT-OFF
Line 8759	Note:
26Jul22 / 1Aug22	

Inv.435 11	1 - BACKFLOW PREVENTER VALVE
Line 8760	Note:
26Jul22 / 1Aug22	

## VACCUM/BELL

Inv.435 13	1 - FAMILY ROOM: INSTALL 1 1/4" ORANGE FLEX CONDUIT ABOVE FIREPLACE FOR FUTURE TV
Line 8763	Note:
26Jul22 / 1Aug22	

## WINDOWS

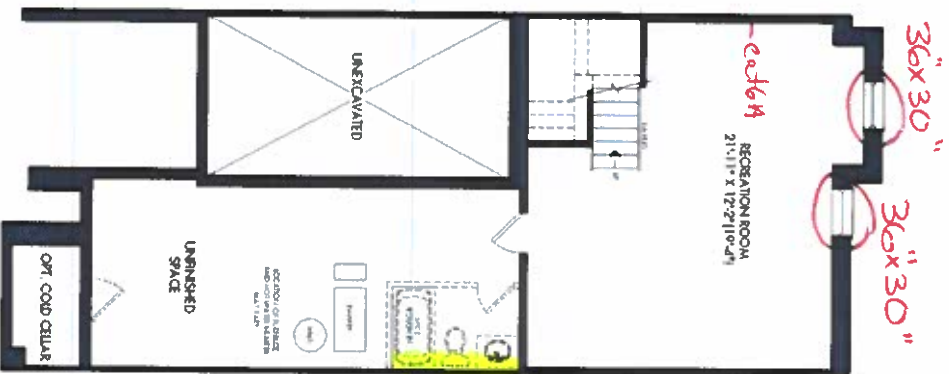
Inv.435 2	2 - BASEMENT: BASEMENT WINDOW - ENLARGE TWO (2) STANDARD WINDOW TO- 36 X 30
Line 8750	Note:
26Jul22 / 1Aug22	

**TH-3  
EDGEEMERE**  
ELEV A 2914 SQ.FT.

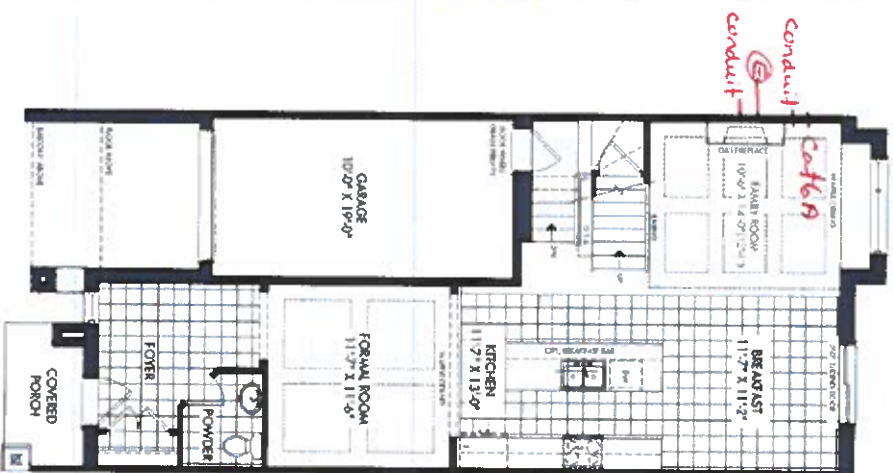
*Lot 224-3*  
*July 26, 2022*

**SCHEDULE "H"**

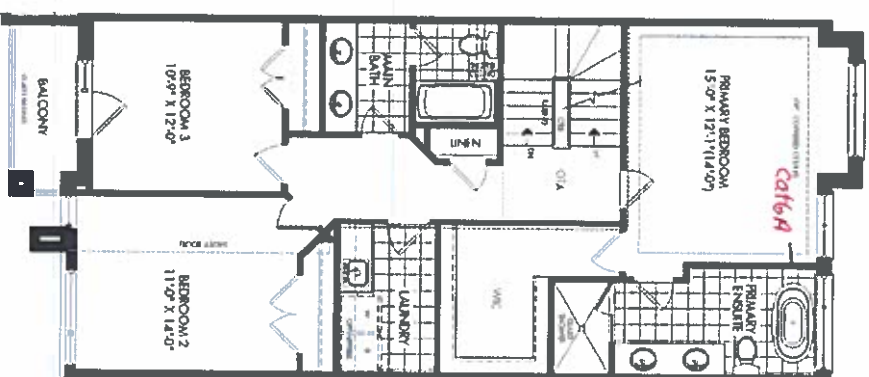
FINISHED  
BASEMENT ELEV A



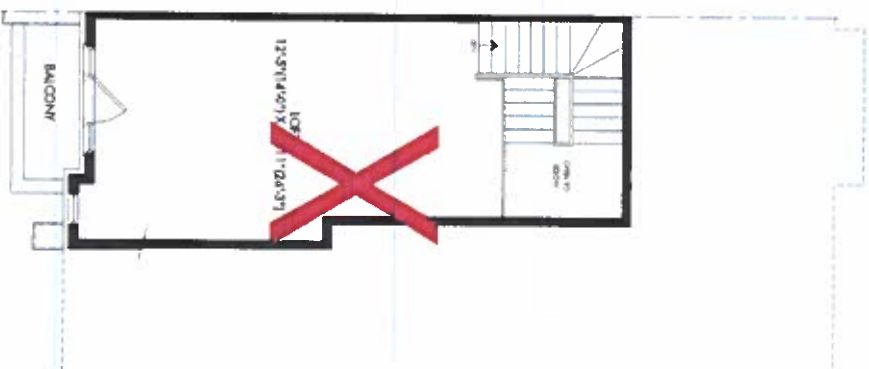
GROUND FLOOR ELEV A



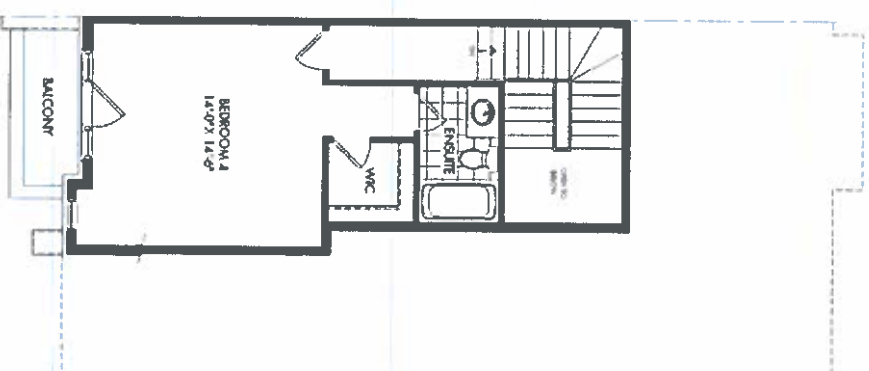
SECOND FLOOR ELEV A



LOFT PLAN ELEV A



OPT LOFT PLAN ELEV A



**JOSHUA CREEK  
MONTAGE**

All drawings are approximate and subject to normal construction practices. Dimensions may include the usable floor area. Some specific details, floor plans and terms and conditions are subject to change without notice. Drawings may show optional features which may not be included in the base price. Plans may be revised. Balcony and opt cold cellar may apply. Contact a sales advisor for further details. All renderings are artist's concepts. © 2022 All rights reserved. Doodle Home.

**VALERY  
HOMES**