

CONSTRUCTION SUMMARY

Joshua Creek - 224-2 ARBOURVIEW (TH-02) A

Registere Plan Number: Municipal Address:

CONSTRUCTION

Inv.419	1 - BASEMENT: COLD CELLAR
3	
Line 8500	Note:
30Jun22 / 30Jun22	

ELECTRICAL

Inv.419	4 - KITCHEN: INSTALL FOUR (4) POT LIGHTS - 4" LED NON-INSULATED CEILINGS, LOCATIONS MAY VARY SLIGHTLY DUE TO JOIST LOCATIONS
4	
Line 8501	Note:
30Jun22 / 30Jun22	

Inv.419	6 - FAMILY ROOM: INSTALL SIX (6) POT LIGHTS - 4" LED NON-INSULATED CEILINGS. DELETE STANDARD LIGHT. LOCATIONS MAY VARY SLIGHTLY DUE TO JOIST LOCATIONS
5	
Line 8502	Note:
30Jun22 / 30Jun22	

Inv.419	4 - FORMAL ROOM: INSTALL FOUR (4) POT LIGHT - 4" LED NON-INSULATED CEILINGS. DELETE STAMDARD LIGHT. LOCATIONS MAY VARY SLIGHTLY DUE TO JOIST LOCATIONS
6	
Line 8503	Note:
30Jun22 / 30Jun22	

Inv.419	1 - KITCHEN: CEILING FIXTURE - RELOCATE STANDARD CEILING FIXTURE. TO GO ABOVE KITCHEN ISLAND. LOCATIONS MAY VARY SLIGHTLY DUE TO JOIST LOCATIONS
7	
Line 8504	Note:
30Jun22 / 30Jun22	

Inv.419	1 - ROUGH-IN FOR AIR CONDITIONER. INCLUDES ELECTRICAL AND BREAKER
8	
Line 8505	Note:
30Jun22 / 30Jun22	

Inv.419	1 - FAMILY ROOM: INSTALL ELECTRICAL - ROUGH-IN FOR 15 AMP ABOVE FIREPLACE FOR FUTURE TV.
9	
Line 8506	Note:
30Jun22 / 30Jun22	

Inv.419	1 - CAT 6A LOCATION SKETCH. LOCATIONS MAY VARY SLIGHTLY DUE TO JOIST LOCATIONS
1	
Line 8498	Note:
30Jun22 / 30Jun22	

MISCELLANEOUS

Inv.419	1 - Purchaser has attended a Structural appointment at the Decor Centre & has DECLINED any additional upgrades and accepts and acknowledges that there will be no further structural changes/additions/deletions to be made upon signing
12	
Line 8509	Note:
30Jun22 / 30Jun22	

PLUMBING

Inv.419	1 - EXTRA ROUGH-IN LINE FOR FRIDGE ICE MAKER WITH SHUT-OFF
11	
Line 8508	Note:
30Jun22 / 30Jun22	

VACCUM/BELL

Joshua Creek - 224-2 ARBOURVIEW (TH-02) A

Registere Plan Number: Municipal Address:

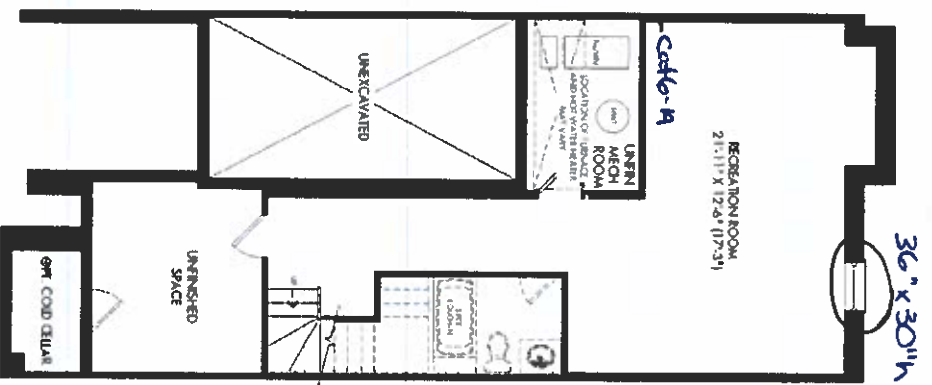
Inv.419 10 Line 8507 30Jun22 / 30Jun22	1 - FAMILY ROOM: INSTALL 1 1/4" ORANGE FLEX CONDUIT ABOVE FIREPLACE FOR FUTURE TV Note:
---	--

WINDOWS

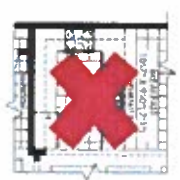
Inv.419 2 Line 8499 30Jun22 / 30Jun22	1 - BASEMENT: BASEMENT WINDOW - ENLARGE STANDARD WINDOW TO- 36 X 30 Note:
--	--

TH-2
ARBOURVIEW
ELEV A 2,903 SQ. FT.

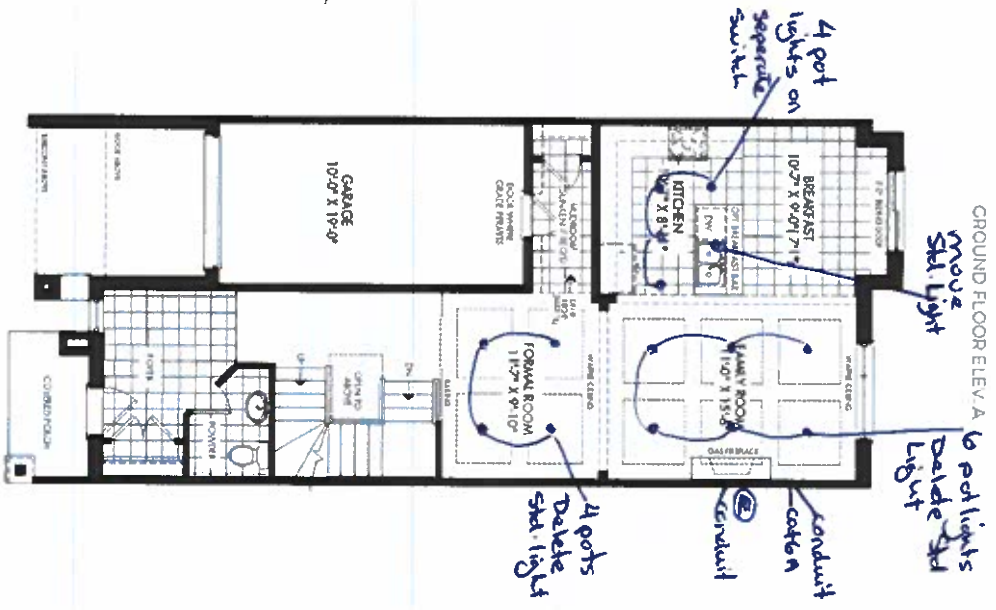
FINISHED
BASEMENT ELEV. A



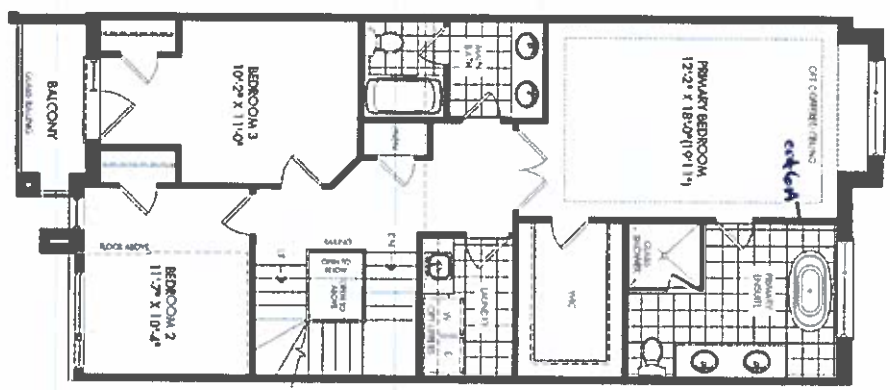
PARTIAL OPTIONAL KITCHEN



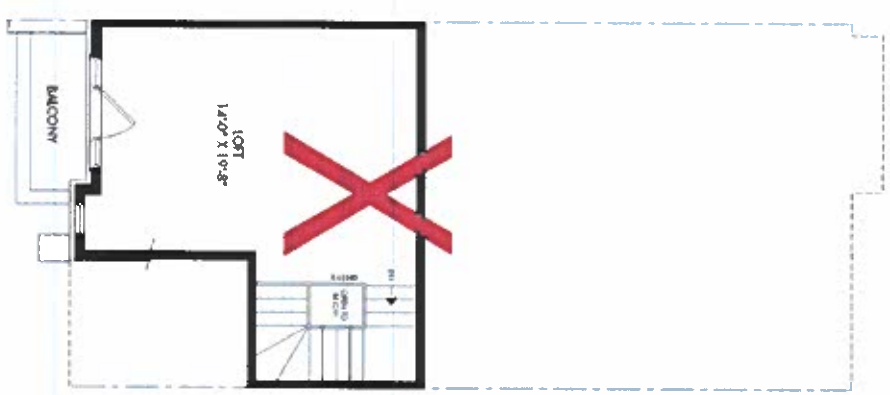
GROUND FLOOR ELEV. A



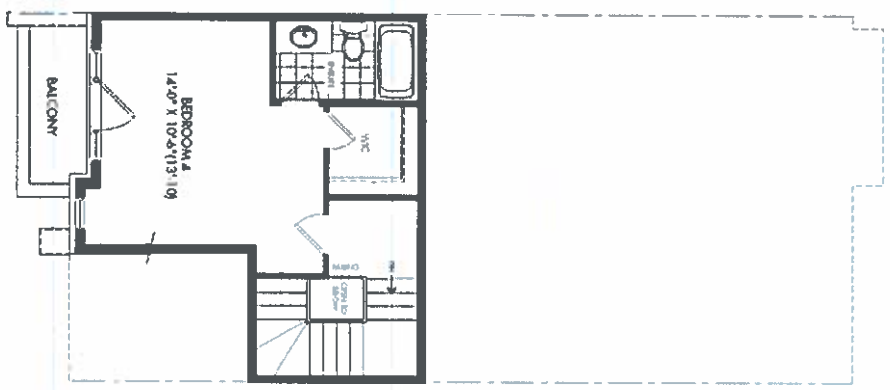
SECOND FLOOR ELEV. A



LOFT PLAN ELEV. A



OPT. LOFT PLAN ELEV. A



Lot 224-2
June 30, 22

SCHEDULE "H"

JOSHUA CREEK
MONTAGE

2. Dimensions are approximate and subject to normal construction variances. Dimensions may exceed the usable floor area. Scale, specifications, floor plans and terms and conditions are subject to change without notice. Drawings may show optional and units which may not be included in the base or lot plans. Plans may be revised. Balcony and facade variations may apply. Contact a sales advisor for further details. All renderings are artist's conceptions. © 2022 All rights reserved. Orndorff Homes.

VALERY
HOMES