

CONSTRUCTION SUMMARY

Joshua Creek - 221-3 · EDGEMERE (TH-03) B

Registere Plan Number: Municipal Address:

BONUS

Inv.409 21 Line 8247 24May22 / 31May22	1 - BONUS PACKAGE: \$5000.00 WORTH OF UPGRADES FROM VALERY HOMES DÉCOR CENTRE IS BEING APPLIED TOWARD THE STRUCTURAL APPOINTMENT. Note:
---	---

ELECTRICAL

Inv.409 5 Line 8215 24May22 / 31May22	1 - FAMILY ROOM: INSTALL RECEPTACLES - DEDICATED 15 AMP 120 VOLT RECEPTABLE, ABOVE FIREPLACE FOR TV Note:
--	---

Inv.409 12 Line 8222 24May22 / 31May22	1 - KITCHEN: INSTALL RECEPTACLES - DEDICATED 15 AMP 120 VOLT RECEPTABLE, ABOVE STOVE FOR FUTURE MICROWAVE Note:
---	---

Inv.409 13 Line 8223 24May22 / 31May22	1 - KITCHEN: INSTALL RECEPTACLES - ADDITIONAL 15 AMP 120 VOLT RECEPTACLE FOR GAS STOVE Note:
---	--

Inv.409 16 Line 8242 24May22 / 31May22	6 - FAMILY ROOM: INSTALL SIX (6) POT LIGHTS- 4" LED NON-INSULATED CEILINGS DELETE STANDARD LIGHTS Note:
---	---

Inv.409 17 Line 8243 24May22 / 31May22	4 - DINING ROOM: INSTALL FOUR (4) POT LIGHTS - 4" LED NON-INSULATED CEILINGS, DELETE STANDARD LIGHTS Note:
---	--

Inv.409 18 Line 8244 24May22 / 31May22	1 - BASEMENT: INSTALL ELECTRICAL - ROUGH-IN FOR 220 V RECEPTACLE. SEE SKETCH. LOCATIONS MAY VARY SLIGHTLY DUE TO JOIST LOCATIONS Note:
---	--

GARAGE DOORS

Inv.409 10 Line 8220 24May22 / 31May22	1 - GARAGE: INSTALL OVERHEAD GARAGE DOOR - LIFTMASTER 8355W - 1/2 HP BELT - INCLUDES 2 REMOTES & 1 KEYPAD - 8 FT Note:
---	--

HVAC

Inv.409 9 Line 8219 24May22 / 31May22	1 - AIR CONDITIONER AND FLOW - THROUGH HUMIDIFIRE AND MEDIA FILTER - ANX13 - 13 SEER - R - 410A - 3.0 TON - WITH FLOW THRU HUMIDIFIER AND 5 INCH MEDIA FILTER Note:
--	---

Inv.409 14 Line 8224 24May22 / 31May22	1 - KITCHEN: INSTALL GAS PIPING AND OTHER - GAS LINE R/I FOR MAIN FLOOR - STOVE Note:
---	---

Inv.409 1 Line 8211 24May22 / 31May22	1 - CAT 6-A LOCATION SKETCH. LOCATIONS MAY VARY SLIGHTLY DUE TO JOIST LOCATIONS Note:
--	---

INTERIOR DOORS & TRIM

CONSTRUCTION SUMMARY

Joshua Creek - 221-3 EDGEMERE (TH-03) B

Registere Plan Number: Municipal Address:

Inv.409 19	24 - INSTALL UPGRADED HARDWARE THROUGHOUT HOUSE, TWENTY-FIVE (25) HANDLES, INCLUDES THE EXTERIOR DOORS
Line 8245	PACE LINE, POLISHED CHROME
	Note:
24May22 / 31May22	
Inv.409 20	1 - EXTERIOR DOOR: UPGRADE GRIP SET TO
Line 8246	STRAIT, IN POLISHED CHROME
	Note:
24May22 / 31May22	

MISCELLANEOUS

Inv.409 22	1 - Purchaser has attended a Structural appointment at the Decor Centre & has DECLINED any additional upgrades and accepts and acknowledges that there will be no further structural changes/additions/deletions to be made upon signing
Line 8248	Note:
24May22 / 31May22	

PLUMBING

Inv.409 11	1 - BASEMENT: INSTALL ROUGH-IN LAUNDRY ROOM IN UNFINISHED AREA. INCLUDES PLUMBING, ELECTRICAL AND VENTING. SEE SKETCH FOR LOCATION
Line 8221	Note:
24May22 / 31May22	
Inv.409 15	1 - KITCHEN: INSTALL EXTRA ROUGH-IN LINE FOR FRIDGE ICE MAKER WITH SHUT-OFF
Line 8225	Note:
24May22 / 31May22	
Inv.409 7	1 - BASEMENT: INSTALL COMPLETE 3 PIECE BATHROOM - EXTRA 3-PIECE IN BASEMENT IN UNFINISHED AREA, SEE SKETCH
Line 8217	Note:
24May22 / 31May22	
Inv.409 8	1 - BACKFLOW PREVENTER VALVE
Line 8218	Note:
24May22 / 31May22	

VACCUM/BELL

Inv.409 6	1 - FAMILY ROOM: INSTALL CONDUIT - 1 1/4" ORANGE FLEX CONDUIT APPROX. 35FT FOR FIREPLACE, FOR TV
Line 8216	Note:
24May22 / 31May22	
Inv.409 2	1 - 10G NETWORK PACKAGE - 4 CAT6A NETWORK CABLES FOR IPTVS - TERMINATED. SEE SKETCH LOCATION. LOCATIONS MAY VARY SLIGHTLY DUE TO JOOIST LOCATIONS
Line 8212	Note:
24May22 / 31May22	

WINDOWS

Inv.409 3	1 - BASEMENT: INSTALL BASEMENT WINDOW - EGRESS, IN LIEU OF STANDARD WINDOW - 56" X 30" H
Line 8213	Note:
24May22 / 31May22	

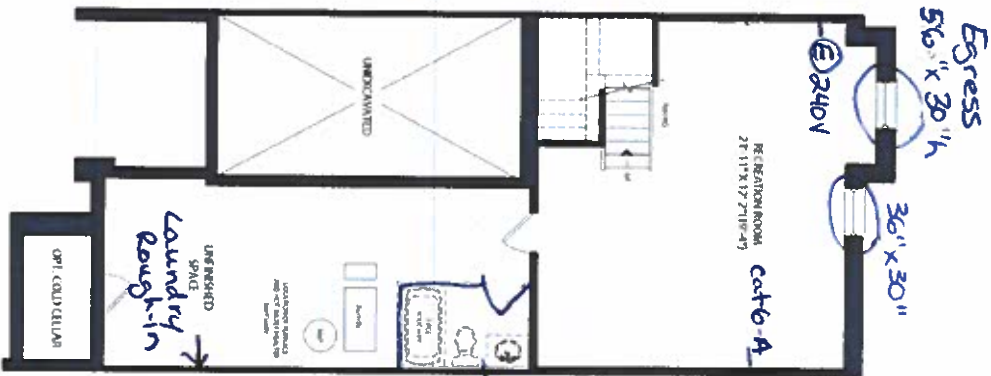
Joshua Creek - 221-3 · EDGEMERE (TH-03) B

Registere Plan Number: Municipal Address: --

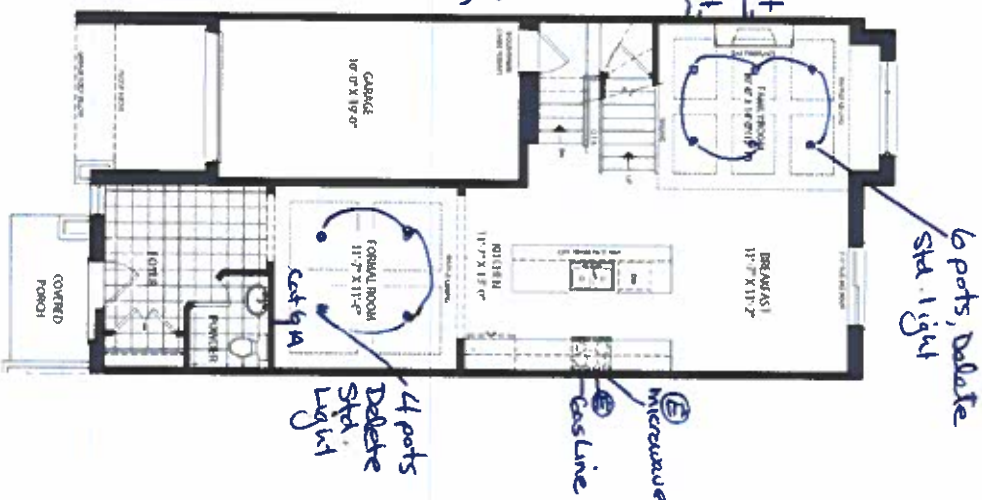
Inv.409	1 - BASEMENT: ENLARGE BASEMENT WINDOW - TO - 36 X 30
4	
Line 8214	Note:
24May22 / 31May22	

TH-3
EDGEMERE
ELEV.B 2,903 SQ.FT.

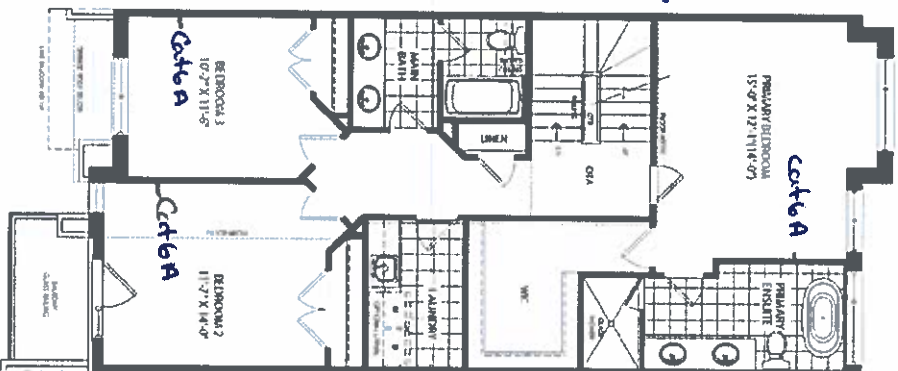
FINISHED BASEMENT ELEV. B



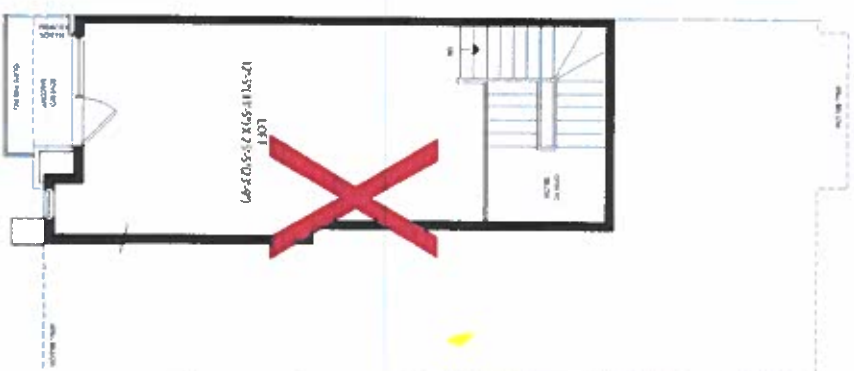
GROUND FLOOR ELEV. B



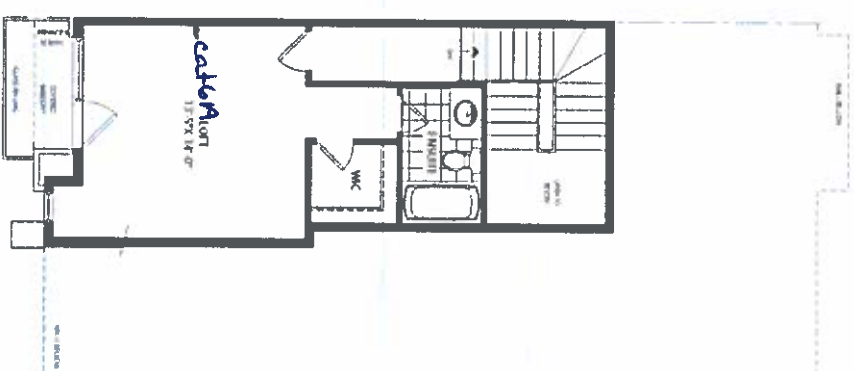
SECOND FLOOR ELEV. B



LOFT PLAN ELEV. B



OPT. LOFT PLAN ELEV. B



SCHEDULE "H"

Electrical
Not 221-3
May 24, 22

JOSHUA CREEK

MONTAGE

All dimensions are approximate and subject to normal construction variances. Dimensions may exceed the usable floor area. Sizes, space, wall, mill, floor, plans and layouts and contents are subject to change without notice. Drawings may show optional features and each may not be included in the base price. Plans may be revised. Battery and landscape materials may apply. Contact a sales advisor for further details. All writings are artist's concepts. E & OE. All rights reserved. ©Valery Homes.

VALERY
HOMES