

CONSTRUCTION SUMMARY

Joshua Creek - 66 - 1 - NIGHTGALE (44-01) A

Registere Plan Number: Municipal Address: Closing: **23-Oct-23**

BONUS

Inv.498 28	1 - BONUS PACKAGE: \$5,000.00 WORTH OF UPGRADES FROM VALERY HOMES DÉCOR CENTRE IS BEING APPLIED TOWARD THE STRUCTURAL APPOINTMENT
Line 10165	Note:
29Dec22 / 3Nov23	

CEILING

Inv.498 3	1 - 2ND FLOOR: SMOOTH CEILING THROUGHOUT SECOND FLOOR
Line 10138	Note:
29Dec22 / 3Nov23	

Inv.498 4	1 - BASEMENT: SMOOTH CEILING THROUGHOUT BASEMENT
Line 10139	Note:
29Dec22 / 3Nov23	

CONSTRUCTION

Inv.498 2	1 - GARAGE: GARAGE INSULATION - ALL WALLS AND CEILING
Line 10137	Note:
29Dec22 / 3Nov23	

ELECTRICAL

Inv.498 9	1 - KITCHEN: INSTALL ELECTRICAL - ROUGH-IN FOR 40 AMP 220 V BUILT-IN WALL OVEN
Line 10144	Note:
29Dec22 / 3Nov23	

Inv.498 10	1 - KITCHEN: INSTALL ELECTRICAL - DEDICATED 15 AMP 120 V FOR FREEZER
Line 10146	Note:
29Dec22 / 3Nov23	

Inv.498 12	2 - KITCHEN: INSTALL APPLIANCE - RELOCATE STANDARD APPLIANCE AND MOVE ISLAND
SINK AND DISHWASHER TO MOVE FORWARD TOWARDS STOVE WALL BY 2', SO THAT THE SPACE BETWEEN ISLAND AND STOVE COUNTER IS 4'	
Line 10148	Note:
29Dec22 / 3Nov23	

Inv.498 13	3 - PRIMARY BDRM - BED #3 & BED #4: SWITCHES - ADDITIONAL 3-WAY SWITCH. SEE SKETCH FOR LOCATIONS
LOCATIONS MAY VARY SLIGHTLY DUE TO JOIST LOCATIONS	
Line 10149	Note:
29Dec22 / 3Nov23	

Inv.498 14	1 - PRIMARY ENSUITE: INSTALL ELECTRICAL - DEDICATED 15 AMP 120 V IN PRIMARY ENS. SEE SKETCH
LOCATIONS MAY VARY SLIGHTLY DUE TO JOIST LOCATIONS	
Line 10150	Note:
29Dec22 / 3Nov23	

Inv.498 15	1 - KITCHEN: CEILING FIXTURE - RELOCATE STANDARD CEILING FIXTURE ABOVE ISLAND
Line 10151	Note: Location may vary slightly due to joist location
29Dec22 / 3Nov23	

Joshua Creek - 66 - 1 - NIGHTGALE (44-01) A

Registere Plan Number: Municipal Address: Closing: 23-Oct-23

Inv.498 16	1 - KITCHEN: INSTALL CEILING LIGHT ROUGH IN - FOR 1 CEILING LIGHT, ON EXISTING SWITCH (DOES NOT INCLUDE FIXTURE) ON ISLAND, ON SAME SWITCH AS STANDARD LIGHT
Line 10153	Note: Location may vary slightly due to joist location
29Dec22 / 3Nov23	
Inv.498 17	1 - KITCHEN: INSTALL CEILING LIGHT ROUGH IN - FOR 1 CEILING LIGHT - ON SEPARATE SWITCH (DOES NOT INCLUDE FIXTURE). IN FRONT OF STOVE. SEE SKETCH
Line 10154	Note: Location may vary slightly due to joist location
29Dec22 / 3Nov23	
Inv.498 18	1 - UPPER HALL, ABOVE OPEN TO BELOW: INSTALL CEILING LIGHT ROUGH IN - FOR 1 CEILING LIGHT - ON SEPARATE SWITCH (DOES NOT INCLUDE FIXTURE)
Line 10155	Note: Location may vary slightly due to joist location
29Dec22 / 3Nov23	
Inv.498 19	1 - UPPER HALL, ABOVE OPEN TO BELOW: INSTALL SWITCHES - ADDITIONAL 3-WAY SWITCH FOR ROUGHT IN. SEE SKTCH.
Line 10156	Note:
29Dec22 / 3Nov23	
Inv.498 20	1 - KITCHEN: INSTALL CABINET LIGHTING - UNDERMOUNT T-5 LED VALANCE LIGHT. LIGHT ONLY
Line 10157	Note: Valance must be purchased at the colour appointment to cover lights
29Dec22 / 3Nov23	
Inv.498 21	1 - PRIMARY ENSUITE: RECEPTACLES - DEDICATED 15 AMP 120 VOLT GFCI RECEPTACLE (INTERIOR), BY SINK, ABOVE COUNTER, ON SIDE CLOSER TO TOILET.
Line 10158	Note:
29Dec22 / 3Nov23	

INTERIOR DOOR & TRIM

Inv.498 6	2 - DEN: INSTALL 1 PANEL FRENCH DOOR, WHITE ACID ETCHED GLASS 96" H
Line 10141	Note:
29Dec22 / 3Nov23	
Inv.498 7	1 - INTERIOR DOOR HARDWARE-SINGLES, PACE LINE IN MATTE BLACK. INCL. EXTERIOR DOOR, NOT GRIP SET.
Line 10142	Note:
29Dec22 / 3Nov23	
Inv.498 8	1 - GRIP SET- STRAIT IN MATTE BLACK
Line 10143	Note:
29Dec22 / 3Nov23	

INTERIOR DOORS & TRIM

Inv.498 5	24 - BASEMENT AND SECOND FLOOR: INTERIOR DOOR & TRIM - INSTALL TWENTY-SIX (26) EXTENDED HEIGHT DOOR 96 INCH - 2ND FLOOR, UPGRADE FROM STD. 84"
Line 10140	Note:
29Dec22 / 3Nov23	

MISCELLANEOUS

Inv.498 29	1 - Purchaser has attended a Structural appointment at the Decor Centre & has DECLINED any additional upgrades and accepts and acknowledges that there will be no further structural changes/additions/deletions to be made upon signing
Line 10166	Note: Purchaser accepts & acknowledges that all upgrades are to be approved by construction before the invoice is accepted
29Dec22 / 3Nov23	

CONSTRUCTION SUMMARY

Joshua Creek - 66 - 1 - NIGHTGALE (44-01) A

Registere Plan Number: Municipal Address: Closing: **23-Oct-23**

PLUMBING

Inv.498 23 Line 10160	1 - PRIMARY ENSUITE: INSTALL PLUMBING FOR RAIN SHOWERHEAD FROM CEILING, MUST PURCHASE SHOWERHEAD. IN LIEU OF STANDARD SHOWERHEAD ON WALL Note:
29Dec22 / 3Nov23	
Inv.498 24 Line 10161	1 - PRIMARY ENSUITE: INSTALL RAINSHOWER MOEN 12" RAINSHOWER WITH IMMERSION S1004 CHROME Note:
29Dec22 / 3Nov23	
Inv.498 25 Line 10162	1 - PRIMARY ENSUITE: INSTALL SHOWER ARM FOR RAIN SHOWER MOEN 6" 116651 CHROME Note:
29Dec22 / 3Nov23	
Inv.498 26 Line 10163	1 - PRIMARY ENSUITE: KEEP STANDARD SHOWERHEAD, IN ADDITION TO UPGRADED RAIN SHOWER Note:
29Dec22 / 3Nov23	
Inv.498 27 Line 10164	1 - MUDROOM: INSTALL EXTRA WATERLINE FOR FUTURE LAUNDRY TUB. ROUGH-IN ONLY TILES MUST BE PURCHASED IF INSTALLED ON CARPET Note:
29Dec22 / 3Nov23	
Inv.498 11 Line 10147	1 - KITCHEN: INSTALL EXTRA ROUGH-IN LINE FOR FRIDGE ICE MAKER WITH SHUT-OFF FOR FREEZER Note:
29Dec22 / 3Nov23	

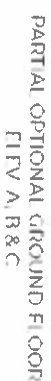
VACCUM/BELL

Inv.498 1 Line 10136	1 - CAT 6A LOCATION SKETCH. LOCATIONS MAY VARY SLIGHTLY DUE TO JOIST LOCATIONS (STD) Note:
29Dec22 / 3Nov23	
Inv.498 22 Line 10159	1 - DEN: INSTALL CAT-6A NETWORK CABLE FOR WIRELESS ACCESS POINT - TERMINATED Note: LOCATIONS MAY VARY SLIGHTLY DUE TO JOIST LOCATIONS
29Dec22 / 3Nov23	

1-77



PARTIAL GROUND FLOOR ELEV B



2016
 2017
 2018
 2019
 2020
 2021
 2022
 2023
 2024
 2025
 2026
 2027
 2028
 2029
 2030

Rough-In on separate
Switch.

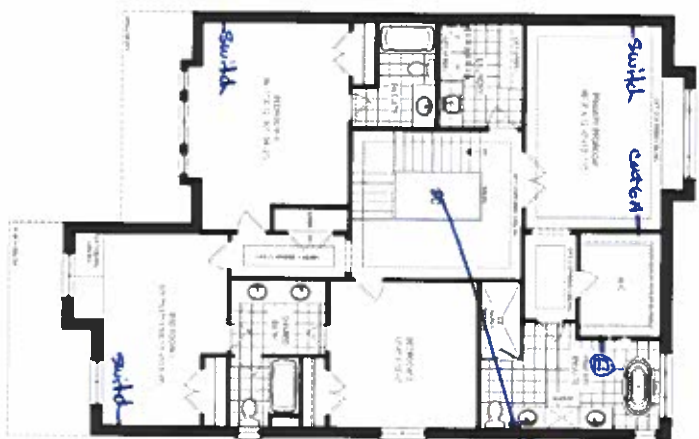
MONTAGE

All 10 "winners" of the contest will be announced in the summer of 2014. The winners may also receive a cash prize of \$10,000. The winners will be selected by a panel of judges, including members of the public, who will be invited to submit their votes online. The winners will be selected by a panel of judges, including members of the public, who will be invited to submit their votes online.

VALERY HOMER

NIGHTINGALE

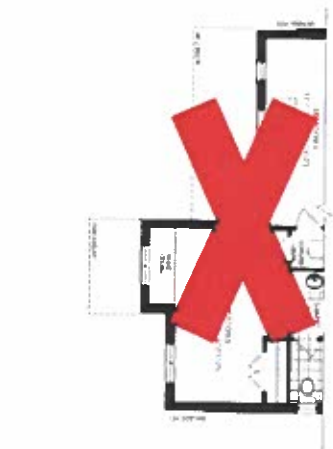
44-1



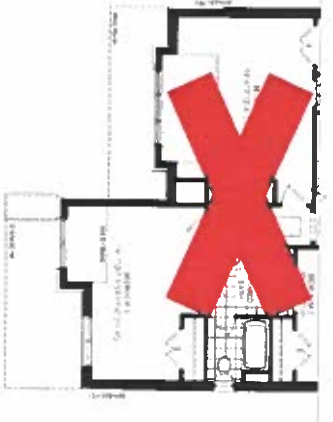
SECOND FLOOR ELEV A



OPTIONAL SECOND FLOOR ELEV A
5 BLDROOM



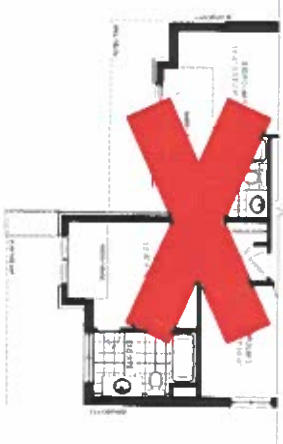
PARTIAL SECOND FLOOR ELEV B



PARTIAL SECOND FLOOR ELEV C



PARTIAL OPTIONAL SECOND FLOOR ELEV B
5 BLDROOM



OPTIONAL SECOND FLOOR ELEV C
5 BLDROOM

JOSHUA CREEK

MONTAGE

All dimensions are approximate and subject to normal construction variances. Dimensions may vary and floor joists may also show specifications floor joists and beams and studs are subject to change without notice. Client requests show notes a layout is not a final plan. Excludes all the below are: Plans from the window, balcony and deck variations, in addition, draft a plan, advice for further details. All windows are 1/2" x 1/2" windows. E & OC: All rights reserved. Copying, storing, etc.

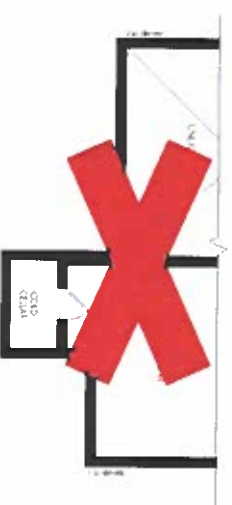
Not 66 (A) (B)

Dec. 29, 22

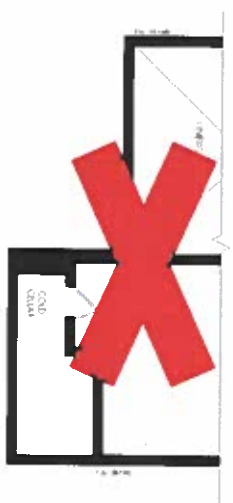
VALERY
HOMES

NIGHTINGALE

64-7



PARTIAL BASEMENT FLOOR PLAN



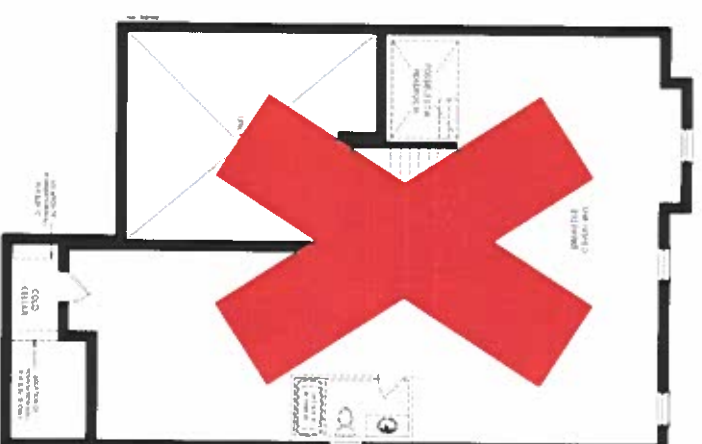
PARTIAL BASEMENT 1st FLOOR ELEV C



PARTIAL BASEMENT PLAN
FOR OPT GROUND FLOOR
ELEV. A, B & C



PARTIAL BASEMENT PLAN ELEV. A, B & C
WITH OPT. EXTERIOR STAIR



UNFINISHED BASEMENT ELEV. A, B & C.



PARTIAL OPTIONAL
FINISHED BASEMENT FLOOR
FOR OPTIONAL GROUND FLOOR
ELEV. A, B & C



FINISHED BASEMENT FLOOR ELEV. A, B & C
WITH OPT. EXTERIOR STAIR



FINISHED BASMENT LEVEL A, B&C

JOSHUA CREEK
MONTAGE

[illegible]

VALERY

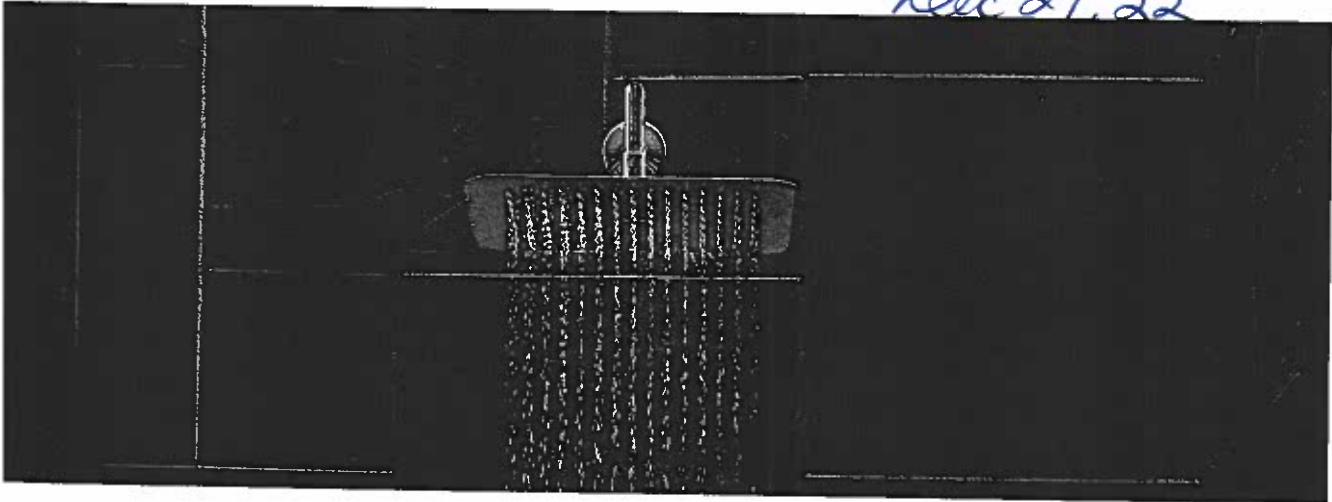
~~Oct 66~~ ~~AK~~ ~~EC~~

Dec. 29, 22

rainshowers

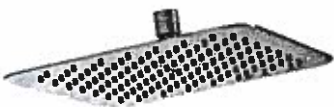
20766 (A) (W)
Dec 29, 22

SHOWERING



rainshower with
ersion™

me \$658.75



10" Rainshower with
Immersion™

S1003
Chrome \$691.25



Chrome



rainshower with
ersion™

ne \$699.44



12" Rainshower with
Immersion™

S1004
Chrome \$732.00



Chrome

Primary
Ens.

name (C) model, use model number only.

Showering Arms & Flanges

Lot 66 ~~4~~ ~~2~~
Dec. 29, 22

SHOWERING



15" Overhead Shower Arm

51380

Chrome \$109.13

Other \$187.13



Chrome, LifeShine® Brushed Nickel (BN),
Oil Rubbed Bronze (ORB), Matte Black (BL),
Brushed Gold (BG)



8" Curved Shower Arm

123815

Chrome \$40.88

Oil Rubbed Bronze \$93.19

Other \$90.63



Chrome, LifeShine® Brushed Nickel (BN), LifeShine®
Polished Nickel (NL), Oil Rubbed Bronze (ORB),
Matte Black (BL), Brushed Gold (BG)



7" Straight Shower Arm

8651

Chrome \$73.44

Other \$133.25



Chrome, LifeShine® Brushed Nickel (BN), LifeShine®
Polished Nickel (NL), Oil Rubbed Bronze (ORB),
Wrought Iron (WR), Brushed Gold (BG)



6" Straight Shower Arm

116651

Chrome \$28.63

Other \$47.06



Chrome, LifeShine® Brushed Nickel (BN), LifeShine®
Polished Nickel (NL), Oil Rubbed Bronze (ORB),
Wrought Iron (WR), Brushed Gold (BG)

Primary
Ens



Round Shower Flange

188

Chrome \$12.88

Other \$33.38

Matte Black / \$35.31

Brushed Nickel



Chrome, LifeShine® Brushed Nickel (BN),
LifeShine® Polished Nickel (NL),
Wrought Iron (WR), Brushed Gold (BG)



Square Shower Flange

147572

Chrome \$26.31

Other \$52.63



Chrome, LifeShine® Brushed Nickel (BN),



Round Shower Flange

AT2199

Chrome \$16.38

Other \$43.63



Chrome, LifeShine® Brushed Nickel (BN), LifeShine®
Polished Nickel (NL), Oil Rubbed Bronze (ORB),
Wrought Iron (WR), Brushed Gold (BG)

Combine the model number with one of these finish letter(s): LifeShine® Brushed Nickel (BN), Oil Rubbed Bronze (ORB), LifeShine® Polished Nickel (NL), Wrought Iron (WR), Brushed Gold (BG) & Matte Black (BL).
Chrome (C) model, use model number only.