

CONSTRUCTION SUMMARY

Joshua Creek - 69 NOTTINGHILL (44-02) A

Registere Plan Number: Municipal Address: Closing: .

BONUS

Inv.413 25 Line 8323 14Jun22 / 25Oct23	1 - BONUS PACKAGE: \$5,000.00 WORTH OF UPGRADES FROM VALERY HOMES DECOR CENTRE IS BEING APPLIED TOWARD THE STRUCTURAL APPOINTMENT. Note:
---	--

CEILING

Inv.413 8 Line 8306 14Jun22 / 25Oct23	1 - 2ND FLOOR: SMOOTH CEILING, MAIN FLOOR, SECOND FLOOR OR BASEMENT Note:
--	---

Inv.413 9 Line 8307 14Jun22 / 25Oct23	1 - BASEMENT: SMOOTH CEILING, MAIN FLOOR, SECOND FLOOR OR BASEMENT Note:
--	--

CONSTRUCTION

Inv.413 10 Line 8308 14Jun22 / 25Oct23	1 - FAMILY/DINING ROOM: REMOVE WALL BETWEEN THE TWO ROOMS, MAKING AN OPENING OF APPROX. FOURTEEN (14) FEET. SEE SKETCH FOR DETAILS Note:
---	--

Inv.413 12 Line 8310 14Jun22 / 25Oct23	1 - MAIN HALL: REMOVE 4 NIB WALLS FROM THE MAIN HALL, IN FRONT OF THE DEN. SEE SKETCH Note:
---	---

ELECTRICAL

Inv.413 5 Line 8301 14Jun22 / 25Oct23	1 - KITCHEN: INSTALL - ROUGH-IN FOR DEDICATED 50 AMP, 60" 4 WIRE FOR WALL OVEN Note:
--	--

Inv.413 6 Line 8302 14Jun22 / 25Oct23	1 - KITCHEN: INSTALL ELECTRICAL - ROUGH-IN FOR DEDICATED 50 AMP, 60" 4 WIRE FOR ELECTRIC COOK TOP Note:
--	---

Inv.413 16 Line 8314 14Jun22 / 25Oct23	6 - FAMILY ROOM: INSTALL SIX (6) POT LIGHTS - 4" LED NON-INSULATED CEILINGS. DELETE STANDARD LIGHT. LOCATIONS MAY VARY SLIGHTLY DUE TO JOIST LOCATIONS Note:
---	--

Inv.413 17 Line 8315 14Jun22 / 25Oct23	5 - KITCHEN: INSTALL FIVE (5) POT LIGHT - 4" LED NON-INSULATED CEILINGS. LOCATIONS MAY VARY SLIGHTLY DUE TO JOIST LOCATIONS Note:
---	---

Inv.413 18 Line 8316 14Jun22 / 25Oct23	9 - BREAKFAST AREA: INSTALL 9 POT LIGHTS ON SAME SWITCH - 4" LED NON-INSULATED CEILINGS. DELETE STANDARD LIGHT. LOCATIONS MAY VARY SLIGHTLY DUE TO JOIST LOCATIONS Note:
---	--

Inv.413 19 Line 8317 14Jun22 / 25Oct23	1 - KITCHEN: CEILING FIXTURE - RELOCATE STANDARD CEILING FIXTURE. LOCATIONS MAY VARY SLIGHTLY DUE TO JOIST LOCATIONS Note:
---	--

CONSTRUCTION SUMMARY

Joshua Creek - 69 NOTTINGHILL (44-02) A

Registere Plan Number: Municipal Address: Closing:

Inv.413 2	1 - KITCHEN: INSTALL ELECTRICAL - ROUGH-IN FOR DEDICATED 15 AMP 120 V FOR FREEZER
Line 8296	Note:
14Jun22 / 25Oct23	

Inv.413 23	1 - KITCHEN: INSTALL CABINET LIGHTING - UNDERMOUNT T-5 LED VALANCE LIGHT
Line 8321	Note:
14Jun22 / 25Oct23	

Inv.413 14	1 - FAMILY ROOM: INSTALL RECEPTACLES - DEDICATED 120 VOLT RECEPTACLE FOR TV ABOVE FIREPLACE
Line 8312	Note:
14Jun22 / 25Oct23	

HVAC

Inv.413 22	1 - AIR CONDITIONER AND FLOW - THROUGH HUMIDIFIER AND MEDIA FILTER - ANX13 - 13 SEER - R - 410A - 4.0 TON - WITH FLOW THRU HUMIDIFIER AND 5 INCH MEDIA FILTER
Line 8320	Note:
14Jun22 / 25Oct23	

Inv.413 1	1 - CAT 6-A LOCATION SKETCH. LOCATIONS MAY VARY SLIGHTLY DUE TO JOIST LOCATIONS
Line 8295	Note:
14Jun22 / 25Oct23	

Inv.413 4	1 - KITCHEN: INSTALL GAS PIPING AND OTHER - UPGRADE STOVE VENT FROM 6 INCH TO 8 INCH,
Line 8299	Note:
14Jun22 / 25Oct23	

INTERIOR DOOR & TRIM

Inv.413 21	2 - DEN: INSTALL TWO (2) 1 PANEL FRENCH DOOR, WHITE ACID ETCHED GLASS 96" H
Line 8319	Note:
14Jun22 / 25Oct23	

INTERIOR DOORS & TRIM

Inv.413 11	23 - 2ND FLOOR - BASEMENT: INTERIOR DOOR & TRIM - EXTENDED HEIGHT DOOR 96 INCH - 2ND FLOOR, UPGRADE FROM STD. 84". INCREASE INTERIOR DOORS ON 2ND FLOOR AND BASEMENT- TOTAL 23
Line 8309	Note:
14Jun22 / 25Oct23	

Inv.413 20	1 - DEN: INTERIOR DOOR & TRIM - ADD EXTRA (STD) INTERIOR DOOR, 96"- INSTALL DOUBLE STANDARD DOORS. TO BE CHANGED TO FRENCH DOORS IN SEPARATE ENTRY
Line 8318	Note:
14Jun22 / 25Oct23	

MISCELLANEOUS

Inv.413 13	1 - DEPOSIT FOR REDESIGNED KITCHEN. AMOUNT TO BE DEDUCTED FROM KITCHEN DESIGN AT COLOUR APPOINTMENT. MUST BE USED TOWARDS KITCHEN CABINET UPGRADES. FULL AMOUNT IS NON-REFUNDABLE IF PURCHASER DOES NOT UPGRADE THE KITCHEN.
Line 8311	Note:
14Jun22 / 25Oct23	

CONSTRUCTION SUMMARY

Joshua Creek - 69 NOTTINGHILL (44-02) A

Registere Plan Number: Municipal Address: Closing:

Inv.413 26	1 - Purchaser has attended a Structural appointment at the Decor Centre & has DECLINED any additional upgrades and accepts and acknowledges that there will be no further structural changes/additions/deletions to be made upon signing
Line 8324	Note:
14Jun22 / 25Oct23	

PLUMBING

Inv.413 3	1 - KITCHEN: INSTALL EXTRA ROUGH-IN LINE FOR FRIDGE/FREEZER ICE MAKER WITH SHUT-OFF
Line 8297	Note:
14Jun22 / 25Oct23	

VACCUM/BELL

Inv.413 24	1 - CENTRAL VACUUM - CENTRAL VAC PIPING COMPLETE ROUGH-IN TO GARAGE - TWO OUTLETS PER FLOOR AND ONE OUTLET IN BASEMENT R/I ONLY
Line 8322	Note:
14Jun22 / 25Oct23	

Inv.413 15	1 - FAMILY ROOM: INSTALL 1 1/4" ORANGE FLEX CONDUIT ABOVE FIREPLACE FOR TV
Line 8313	Note:
14Jun22 / 25Oct23	

WINDOWS

Inv.413 7	3 - BASEMENT: WINDOW - ENLARGE STANDARD WINDOW TO- 36 X 30
Line 8305	Note:
14Jun22 / 25Oct23	

PR
A.L.

MONTAGE

and subject to normal 30 day return policy. Dimensions may exceed the usable floor area. Specs, specifications, floor plans and terms and conditions are subject to change without notice. Drawings may show optional features which may be included in the base price. Plans may be reversed. Safety and facade variations may apply, contact a sales advisor for further details. All renderings are artist's conceptions. E. & O. All rights reserved. ©2009 Harris

**H
O
N
E
Y**



6 pots, delete
Standard Light

Open area
between
Family &
Dining Room

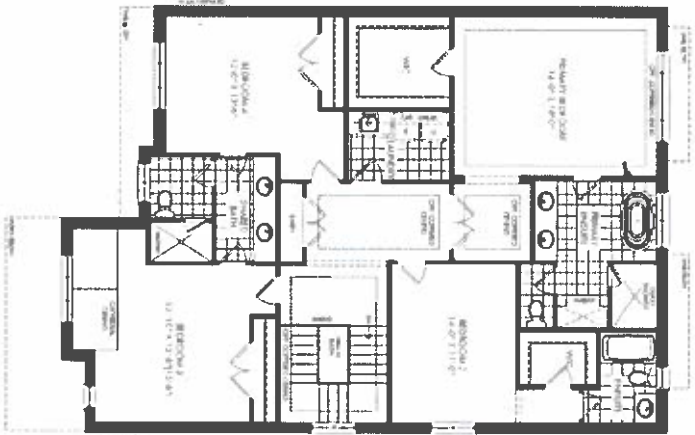
Install
Double French
Door

Remove
N.b woods

Lot 69 PR A.L.
July 14, 22



OPTIONAL SECOND FLOOR ELEV A
5 BEDROOM



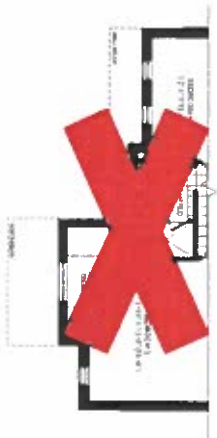
SECOND FLOOR ELEV A



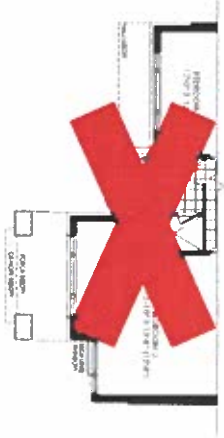
OPTIONAL SECOND FLOOR ELEV B
5 BEDROOM



OPTIONAL SECOND FLOOR ELEV C
5 BEDROOM



PARTIAL SECOND FLOOR ELEV B



PARTIAL SECOND FLOOR ELEV C

JOSHUA CREEK
MONTAGE

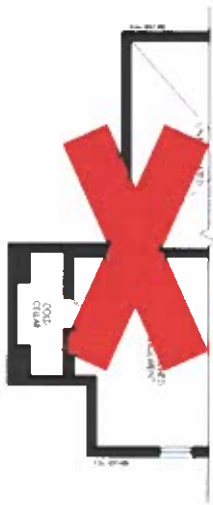
All dimensions are approximate and subject to future construction. Dimensions may vary without notice. Drawing may show optional features which may not be included in the base price. Plans may be revised. Builders and inside contractors may add. Contact a sales person for further details. All renderings are artist's conceptions. B.O.B. A.I.I. rights reserved. Builders' names.

VALERY
HOMES

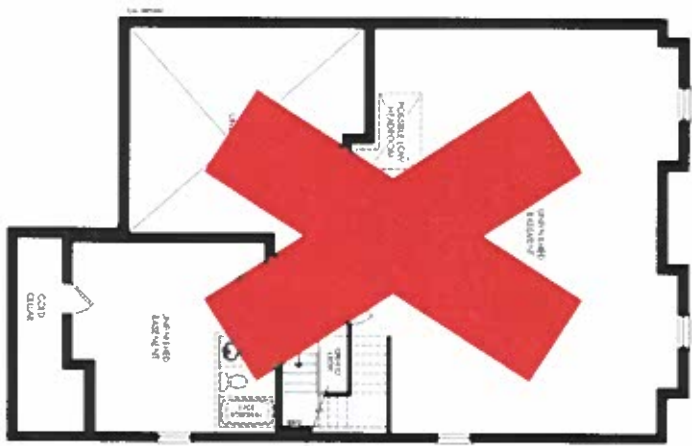
NOTTINGHILL

44-2

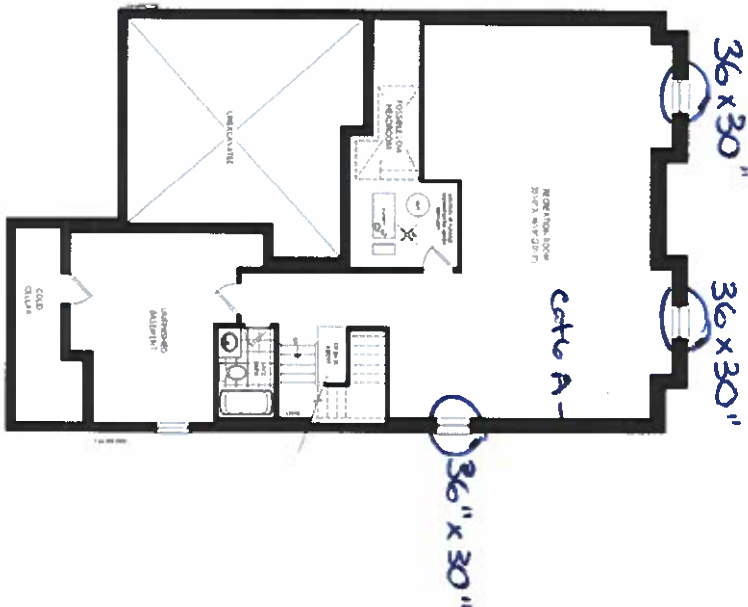
Lot 69
July 14, 22
P.L.
A.L.



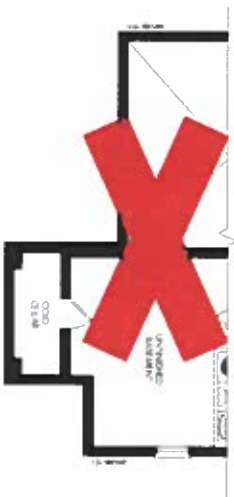
PARTIAL BASEMENT FLOOR ELEV B



UNFINISHED BASEMENT ELEV A



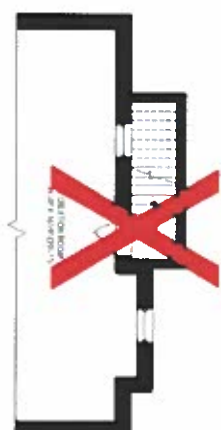
FINISHED BASEMENT FLOOR
ELEV. A, B & C



PARTIAL BASEMENT FLOOR ELEV C



PARTIAL BASEMENT FLOOR ELEV A, B & C
WITH OPT. EXTERIOR STAIR



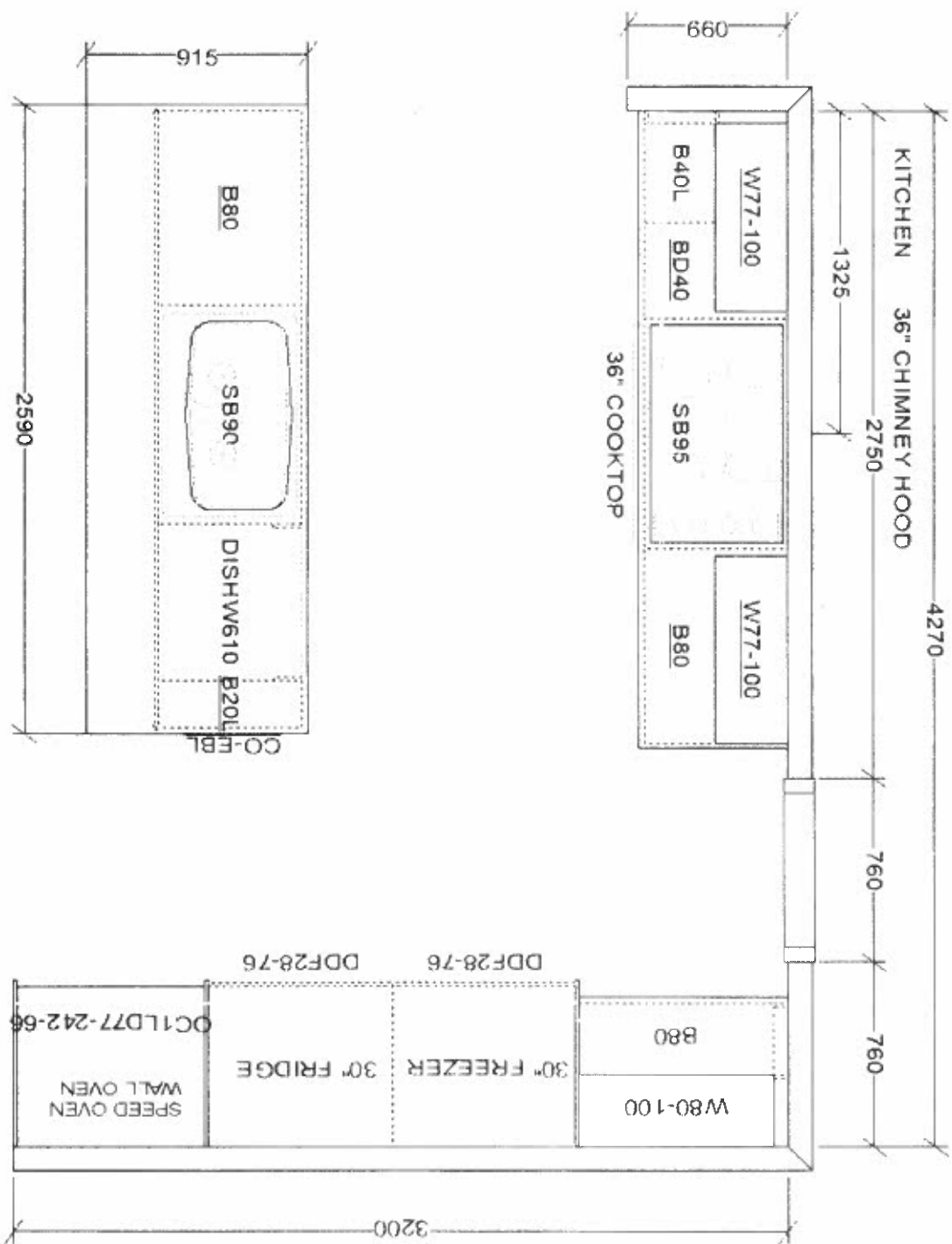
PARTIAL FINISHED FLOOR ELEV A, B & C
WITH OPT. EXTERIOR STAIR

JOSHUA CREEK

MONTAGE

All dimensions are approximate and are subject to normal construction variations. Dimensions may exceed the usable floor area. Sales, specifications, floor plans, and permits and conditions are subject to change without notice. Drawings may show optional features which may not be included in the base price. Plans may be revised. Balcony and facade variations may apply. Contact a sales advisor for further details. All renderings are artist concepts. E & O E. All rights reserved. Delivery homes.

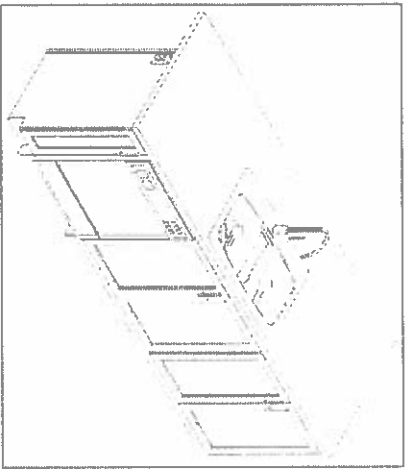
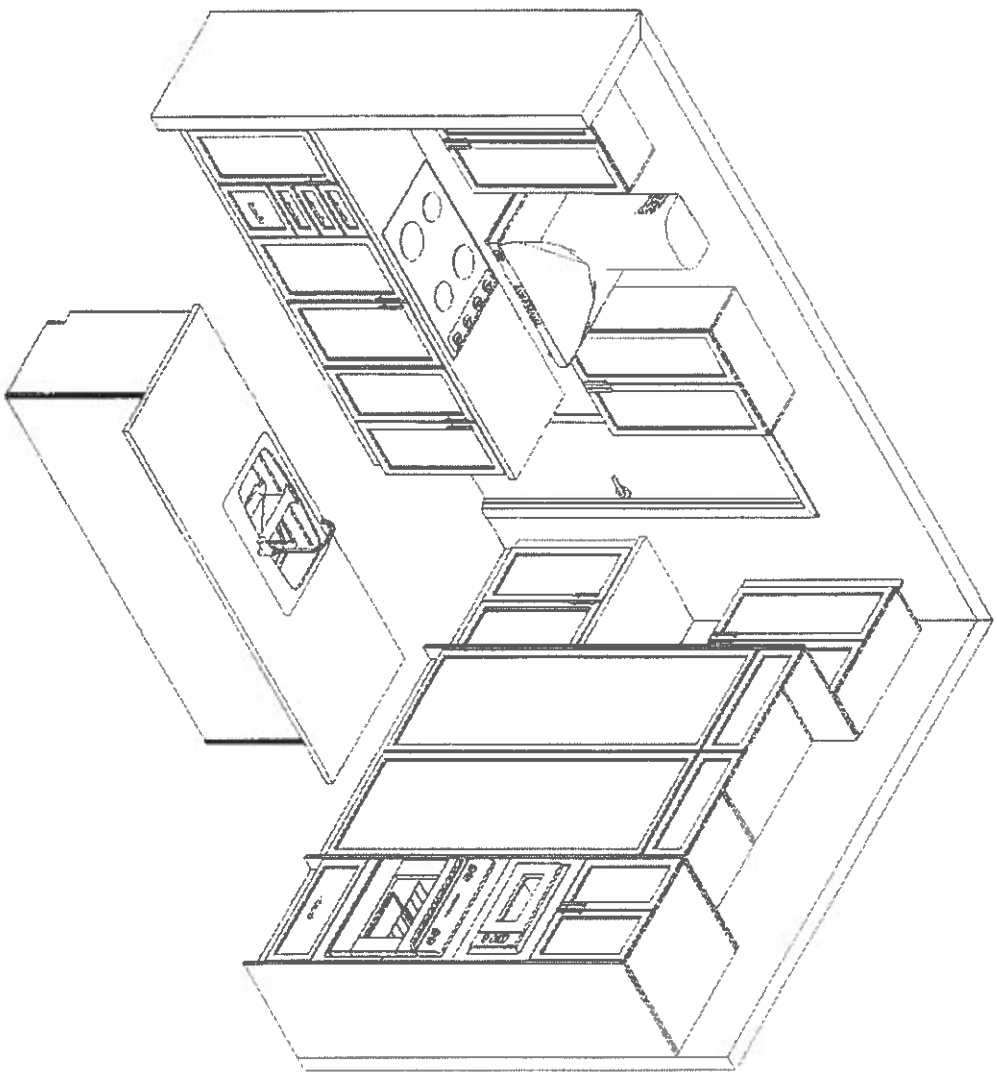
VALENTINE
HOMES



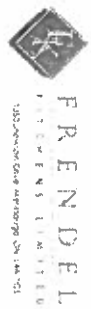
This sketch is for DESIGN PURPOSES ONLY - It is not meant to be an exact rendition.

PR AL Aug. 21, 2022

 <p>FRENDEL 4124 E. 3rd St. Tulsa, Oklahoma 74112</p>	<p>VALERY HOMES JOSHUA CREEK LOT 69</p>		<p>Drawn By: Date: August 19, 2022 Scale: Not To Scale</p> <p>Approved By Builder:</p> <p>Date:</p>
--	---	--	---



This sketch is for DESIGN PURPOSES ONLY – It is not meant to be an exact rendition.



VALERY HOMES
JOSHUA CREEK
LOT 69

Drawn By:
Date: August 19, 2022
Scale: Not To Scale

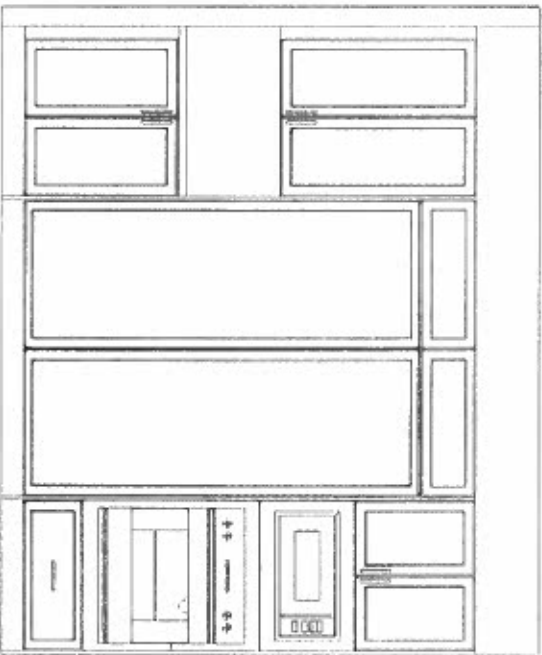
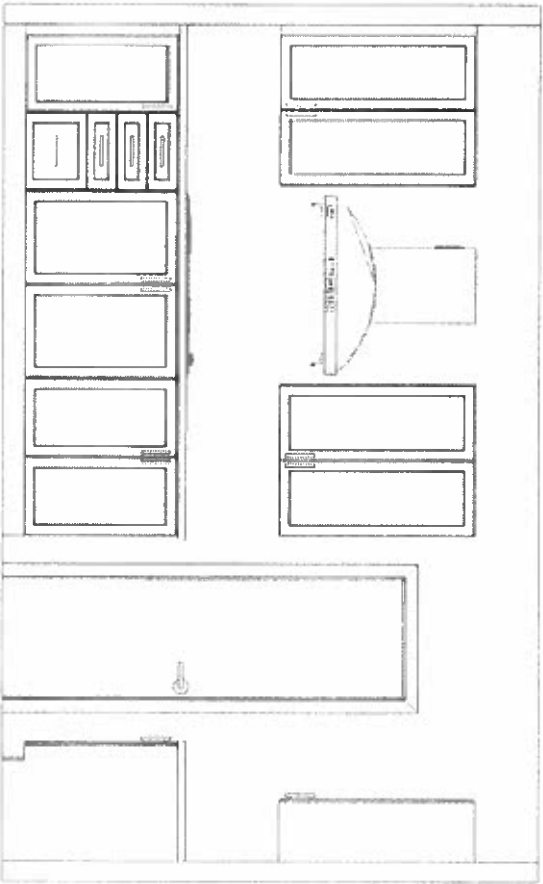
Approved By Builder:

Date:

PR

AL

Aug. 21, 2022



This sketch is for DESIGN PURPOSES ONLY – It is not meant to be an exact rendition.



FRENDEL
KITCHEN & BATH
18750 2nd Avenue, Suite 100, Fort Worth, TX 76116

VALERY HOMES
JOSHUA CREEK
LOT 69

Drawn By:
Date: August 19, 2022
Scale: Not To Scale

Approved By Builder:

Date:

PR

A.V.

Aug. 21, 2022