

CONSTRUCTION SUMMARY

North Oakville - 96 - 1 - ORIOLE (38-05) Elev B

Registere Plan Number: Municipal Address: Closing: **30-Mar-21**

CABINETRY

Inv. 108	2	1 - ADD POTS AND PANS BANK OF DRAWERS BELOW STOVE TOP AS PER BUILDERS STANDARD SELECTIONS AS PER SKETCH EXTEND AND ROUND BREAKFAST BAR AS PER SKETCH OPTIONAL DESK IN KITCHEN AS PER SKETCH CREATE SPACE FOR DOUBLE STACKED OVENS AND RELOCATE FRIDGE AS SKET
Line 1508 Note:		
4Jun20 / 4Jun20		
Inv. 108	6	1 - INSTALL WET BAR WITH LOWER CABINETS AS PER BUILDER STANDARD SELECTIONS AS PER SKETCH ADD ROOM IN BASEMENT AS PER SKETCH REMOVE PARTIAL WALL AND REDUCE WALL IN DINING ROOM AS PER SKETCH
Line 1512 Note:		
4Jun20 / 4Jun20		
Inv. 109	16	1 - KITCHEN: DELETE CHANGE TO KITCHEN ISLAND THAT WAS GIVEN IN THE APS. PURCHASER WOULD LIKE IT TO KEEP KITCHEN ISLAND AS THE ORIGINAL, STANDARD PLAN SHOWS.
Line 2078 Note:		
4Jun20 / 15Sep20		

CONSTRUCTION

Inv. 109	17	1 - BASEMENT- LAUNDRY ROUGH-IN FROM APS: NOTE WHERE THE LAUNDRY ROUGH-IN WILL GO IN THE BASEMENT. THE SPACE NEEDS TO ACCOMODATE A 24" WIDE STACKABLE WASHER AND DRYER. WALL TO FURNACE ROOM MAY NEED TO BE ADJUSTED TO ACCOMODATE THE EXTRA.
Line 2079 Note:		
4Jun20 / 15Sep20		
Inv. 108	1	1 - CLOSE WALL BETWEEN KITCHEN AND DINING ROOM AND ADD COUNTER TOP AND SPACE FOR MICROWAVE ABOVE IN KITCHEN AS PER SKETCH GAS LINE FOR STOVE AS PER SKECTCH ENCLOSE OPEN AREA IN STAIRCASE TO BELOW AND ADD DOOR TO LOWER STAIRCASE LINDING AS PER SKETC
Line 1507 Note:		
4Jun20 / 4Jun20		
Inv. 108	4	1 - OPTIONAL SIDE DOOR IF GRADE PERMITS
Line 1510 Note:		
4Jun20 / 4Jun20		

COUNTERTOP

Inv. 108	5	1 - GRANITE COUNTERTIP IN MASTER ENSUITE VANITY AS PER BUILDER STANDARD SELECTIONS
Line 1511 Note:		
4Jun20 / 4Jun20		

ELECTRICAL

Inv. 108	3	1 - UNDERLIGHTED VALANCE LIGHTING IN KITCHEN
Line 1509 Note:		
4Jun20 / 4Jun20		



CONSTRUCTION SUMMARY

North Oakville - 96 - 1 - ORIOLE (38-05) Elev B

Registere Plan Number: Municipal Address: Closing: **30-Mar-21**

Inv.109 9 Line 2067	1 - BELL AND CABLE ROUGH-IN LOCATION SKETCH. LOCATIONS MAY VARY SLIGHTLY DUE TO JOIST LOCATIONS Note:
4Jun20 / 15Sep20	
Inv.109 10 Line 2070	1 - GREAT ROOM: INSTALL RECEPTACLES - DEDICATED 15 AMP 120 VOLT RECEPTABLE FOR FUTURE TV ABOVE FIREPLACE Note:
4Jun20 / 15Sep20	
Inv.109 11 Line 2071	1 - BASEMENT: INSTALL RECEPTACLES - DEDICATED 15 AMP 120 VOLT RECEPTABLE, ABOVE WHERE WET BAR WILL GO. SEE SKETCH. LOCATIONS MAY VARY SLIGHTLY DUE TO JOIST LOCATIONS Note:
4Jun20 / 15Sep20	
Inv.109 12 Line 2072	4 - EXTERIOR: INSTALL FOUR (4) POT LIGHTS - 4" LED - EXTERIOR SOFFITS. SEE SKETCH FOR LOCATIONS Note:
4Jun20 / 15Sep20	
Inv.109 13 Line 2073	1 - KITCHEN: MOVE CEILING FIXTURE - RELOCATE STANDARD CEILING FIXTURE. TO GO ABOVE ISLAND. SEE SKETCH. LOCATIONS MAY VARY SLIGHTLY DUE TO JOIST LOCATIONS Note:
4Jun20 / 15Sep20	
Inv.109 18 Line 2084	1 - KITCHEN: PURCHASER WAS GIVEN IN THE APS ROOM FOR A MICROWAVE IN THE KITCHEN. DO NOT INSTALL RECEPTICAL THERE. ADDITIONAL CABINETS WILL REMAIN BUT THE MICROWAVE WILL GO IN THE WALL OVEN UNIT, AS PER THE SKETCH. Note:
4Jun20 / 15Sep20	
Inv.109 20 Line 2108	1 - GREAT ROOM: INSTALL ONE (1) POT LIGHT - 4" LED NON-INSULATED CEILINGS. LOCATION MAY VARY SLIGHTLY DUE TO JOIST LOCATIONS Note:
4Jun20 / 15Sep20	
Inv.109 22 Line 2109	1 - DINING ROOM: INSTALL ONE (1) POT LIGHT - 4" LED NON-INSULATED CEILINGS Note:
4Jun20 / 15Sep20	
Inv.109 21 Line 2110	1 - KITCHEN: INSTALL ONE (1) POT LIGHT - 4" LED NON-INSULATED CEILINGS LOCATION MAY VARY SLIGHTLY DUE TO JOIST LOCATIONS Note:
4Jun20 / 15Sep20	
MISCELLANEOUS	
Inv.109 23 Line 2082	1 - Purchaser has attended a Structural appointment at the Decor Centre & has DECLINED any additional upgrades and accepts and acknowledges that there will be no further structural changes/additions/deletions to be made upon signing Note:
4Jun20 / 15Sep20	
Inv.109 24 Line 2083	1 - Purchasers are aware & accepts that ANY changes made to upgrades after signing this Purchasers Extra Form are subject to a minimum administration fee Note:
4Jun20 / 15Sep20	



CONSTRUCTION SUMMARY

North Oakville - 96 - 1 - ORIOLE (38-05) Elev B

Registere Plan Number: Municipal Address: Closing: 30-Mar-21

Inv.108 8	1 - INSTALL ASPHALT SHINGLES IN LIEU OF METAL ON LOWER ROOF ABOVE GARAGE
Line 1514	Note:
4Jun20 / 4Jun20	

PLUMBING

Inv.108 7	1 - ROUGHT IN FOR LAUNDRY AS PER SKETCH
Line 1513	Note:
4Jun20 / 4Jun20	
Inv.109 14	1 - BACK YARD: INSTALL EXTRA HOT FAUCET IN BACK YARD
Line 2074	Note:
4Jun20 / 15Sep20	
Inv.109 15	1 - BACK YARD: EXTRA HOT WATER MIXING VALVE TO GO WITH NEW HOT WATER FAUCET IN BACK YARD
Line 2075	Note:
4Jun20 / 15Sep20	

WINDOWS

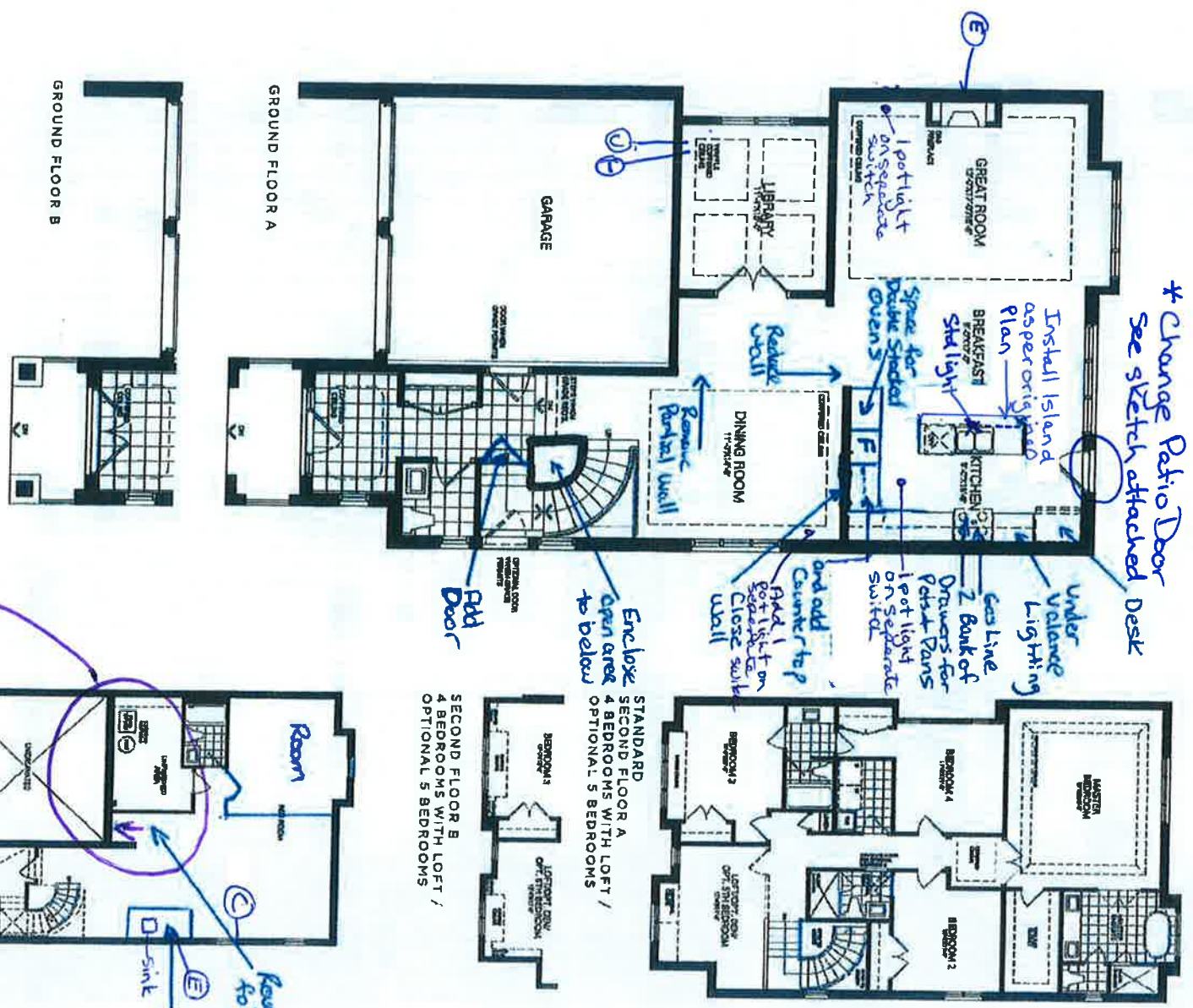
Inv.109 19	1 - KITCHEN: CHANGE SINGLE DOOR TO DOUBLE DOORS WITH SIDE LITES ON EITHER SIDE AND TRANSOM ABOVE. SEE ATTACHED SKETCH.
Line 2081	Note:
4Jun20 / 15Sep20	

Telephone - (T)
 Cable/Cat-6 -
 Electrical - (E)

Lot 96
 OO

ORIOLE

3,587 SQ. FT.
 INCLUDES 780 SQ. FT. FINISHED BASEMENT




All dimensions are approximate and subject to normal construction tolerances. Consideration may be made for the addition of new specifications subject to change without notice. Furnishings is requested for illustration purposes only and does not constitute a contract. The electrical plan for this sales model and any other information, including and without limitation, may be subject to change without notice. E-201, E-202, E-203, E-204, E-205, E-206, E-207, E-208, E-209, E-210, E-211, E-212, E-213, E-214, E-215, E-216, E-217, E-218, E-219, E-220, E-221, E-222, E-223, E-224, E-225, E-226, E-227, E-228, E-229, E-230, E-231, E-232, E-233, E-234, E-235, E-236, E-237, E-238, E-239, E-240, E-241, E-242, E-243, E-244, E-245, E-246, E-247, E-248, E-249, E-250, E-251, E-252, E-253, E-254, E-255, E-256, E-257, E-258, E-259, E-260, E-261, E-262, E-263, E-264, E-265, E-266, E-267, E-268, E-269, E-270, E-271, E-272, E-273, E-274, E-275, E-276, E-277, E-278, E-279, E-280, E-281, E-282, E-283, E-284, E-285, E-286, E-287, E-288, E-289, E-290, E-291, E-292, E-293, E-294, E-295, E-296, E-297, E-298, E-299, E-300, E-301, E-302, E-303, E-304, E-305, E-306, E-307, E-308, E-309, E-310, E-311, E-312, E-313, E-314, E-315, E-316, E-317, E-318, E-319, E-320, E-321, E-322, E-323, E-324, E-325, E-326, E-327, E-328, E-329, E-330, E-331, E-332, E-333, E-334, E-335, E-336, E-337, E-338, E-339, E-340, E-341, E-342, E-343, E-344, E-345, E-346, E-347, E-348, E-349, E-350, E-351, E-352, E-353, E-354, E-355, E-356, E-357, E-358, E-359, E-360, E-361, E-362, E-363, E-364, E-365, E-366, E-367, E-368, E-369, E-370, E-371, E-372, E-373, E-374, E-375, E-376, E-377, E-378, E-379, E-380, E-381, E-382, E-383, E-384, E-385, E-386, E-387, E-388, E-389, E-390, E-391, E-392, E-393, E-394, E-395, E-396, E-397, E-398, E-399, E-400, E-401, E-402, E-403, E-404, E-405, E-406, E-407, E-408, E-409, E-410, E-411, E-412, E-413, E-414, E-415, E-416, E-417, E-418, E-419, E-420, E-421, E-422, E-423, E-424, E-425, E-426, E-427, E-428, E-429, E-430, E-431, E-432, E-433, E-434, E-435, E-436, E-437, E-438, E-439, E-440, E-441, E-442, E-443, E-444, E-445, E-446, E-447, E-448, E-449, E-450, E-451, E-452, E-453, E-454, E-455, E-456, E-457, E-458, E-459, E-460, E-461, E-462, E-463, E-464, E-465, E-466, E-467, E-468, E-469, E-470, E-471, E-472, E-473, E-474, E-475, E-476, E-477, E-478, E-479, E-480, E-481, E-482, E-483, E-484, E-485, E-486, E-487, E-488, E-489, E-490, E-491, E-492, E-493, E-494, E-495, E-496, E-497, E-498, E-499, E-500, E-501, E-502, E-503, E-504, E-505, E-506, E-507, E-508, E-509, E-510, E-511, E-512, E-513, E-514, E-515, E-516, E-517, E-518, E-519, E-520, E-521, E-522, E-523, E-524, E-525, E-526, E-527, E-528, E-529, E-530, E-531, E-532, E-533, E-534, E-535, E-536, E-537, E-538, E-539, E-540, E-541, E-542, E-543, E-544, E-545, E-546, E-547, E-548, E-549, E-550, E-551, E-552, E-553, E-554, E-555, E-556, E-557, E-558, E-559, E-560, E-561, E-562, E-563, E-564, E-565, E-566, E-567, E-568, E-569, E-570, E-571, E-572, E-573, E-574, E-575, E-576, E-577, E-578, E-579, E-580, E-581, E-582, E-583, E-584, E-585, E-586, E-587, E-588, E-589, E-590, E-591, E-592, E-593, E-594, E-595, E-596, E-597, E-598, E-599, E-600, E-601, E-602, E-603, E-604, E-605, E-606, E-607, E-608, E-609, E-610, E-611, E-612, E-613, E-614, E-615, E-616, E-617, E-618, E-619, E-620, E-621, E-622, E-623, E-624, E-625, E-626, E-627, E-628, E-629, E-630, E-631, E-632, E-633, E-634, E-635, E-636, E-637, E-638, E-639, E-640, E-641, E-642, E-643, E-644, E-645, E-646, E-647, E-648, E-649, E-650, E-651, E-652, E-653, E-654, E-655, E-656, E-657, E-658, E-659, E-660, E-661, E-662, E-663, E-664, E-665, E-666, E-667, E-668, E-669, E-670, E-671, E-672, E-673, E-674, E-675, E-676, E-677, E-678, E-679, E-680, E-681, E-682, E-683, E-684, E-685, E-686, E-687, E-688, E-689, E-690, E-691, E-692, E-693, E-694, E-695, E-696, E-697, E-698, E-699, E-700, E-701, E-702, E-703, E-704, E-705, E-706, E-707, E-708, E-709, E-710, E-711, E-712, E-713, E-714, E-715, E-716, E-717, E-718, E-719, E-720, E-721, E-722, E-723, E-724, E-725, E-726, E-727, E-728, E-729, E-730, E-731, E-732, E-733, E-734, E-735, E-736, E-737, E-738, E-739, E-740, E-741, E-742, E-743, E-744, E-745, E-746, E-747, E-748, E-749, E-750, E-751, E-752, E-753, E-754, E-755, E-756, E-757, E-758, E-759, E-760, E-761, E-762, E-763, E-764, E-765, E-766, E-767, E-768, E-769, E-770, E-771, E-772, E-773, E-774, E-775, E-776, E-777, E-778, E-779, E-780, E-781, E-782, E-783, E-784, E-785, E-786, E-787, E-788, E-789, E-790, E-791, E-792, E-793, E-794, E-795, E-796, E-797, E-798, E-799, E-800, E-801, E-802, E-803, E-804, E-805, E-806, E-807, E-808, E-809, E-810, E-811, E-812, E-813, E-814, E-815, E-816, E-817, E-818, E-819, E-820, E-821, E-822, E-823, E-824, E-825, E-826, E-827, E-828, E-829, E-830, E-831, E-832, E-833, E-834, E-835, E-836, E-837, E-838, E-839, E-840, E-841, E-842, E-843, E-844, E-845, E-846, E-847, E-848, E-849, E-850, E-851, E-852, E-853, E-854, E-855, E-856, E-857, E-858, E-859, E-860, E-861, E-862, E-863, E-864, E-865, E-866, E-867, E-868, E-869, E-870, E-871, E-872, E-873, E-874, E-875, E-876, E-877, E-878, E-879, E-880, E-881, E-882, E-883, E-884, E-885, E-886, E-887, E-888, E-889, E-890, E-891, E-892, E-893, E-894, E-895, E-896, E-897, E-898, E-899, E-900, E-901, E-902, E-903, E-904, E-905, E-906, E-907, E-908, E-909, E-910, E-911, E-912, E-913, E-914, E-915, E-916, E-917, E-918, E-919, E-920, E-921, E-922, E-923, E-924, E-925, E-926, E-927, E-928, E-929, E-930, E-931, E-932, E-933, E-934, E-935, E-936, E-937, E-938, E-939, E-940, E-941, E-942, E-943, E-944, E-945, E-946, E-947, E-948, E-949, E-950, E-951, E-952, E-953, E-954, E-955, E-956, E-957, E-958, E-959, E-960, E-961, E-962, E-963, E-964, E-965, E-966, E-967, E-968, E-969, E-970, E-971, E-972, E-973, E-974, E-975, E-976, E-977, E-978, E-979, E-980, E-981, E-982, E-983, E-984, E-985, E-986, E-987, E-988, E-989, E-990, E-991, E-992, E-993, E-994, E-995, E-996, E-997, E-998, E-999, E-1000.



Rough-in laundry to go here. Must accommodate 24" stackable unit. Furnace Room wall may need to be moved slightly to accommodate

RECEIVED
 SEP 14 2020

22 40



15

51

SEP 14 2020

4 Exterior
Pot Lights



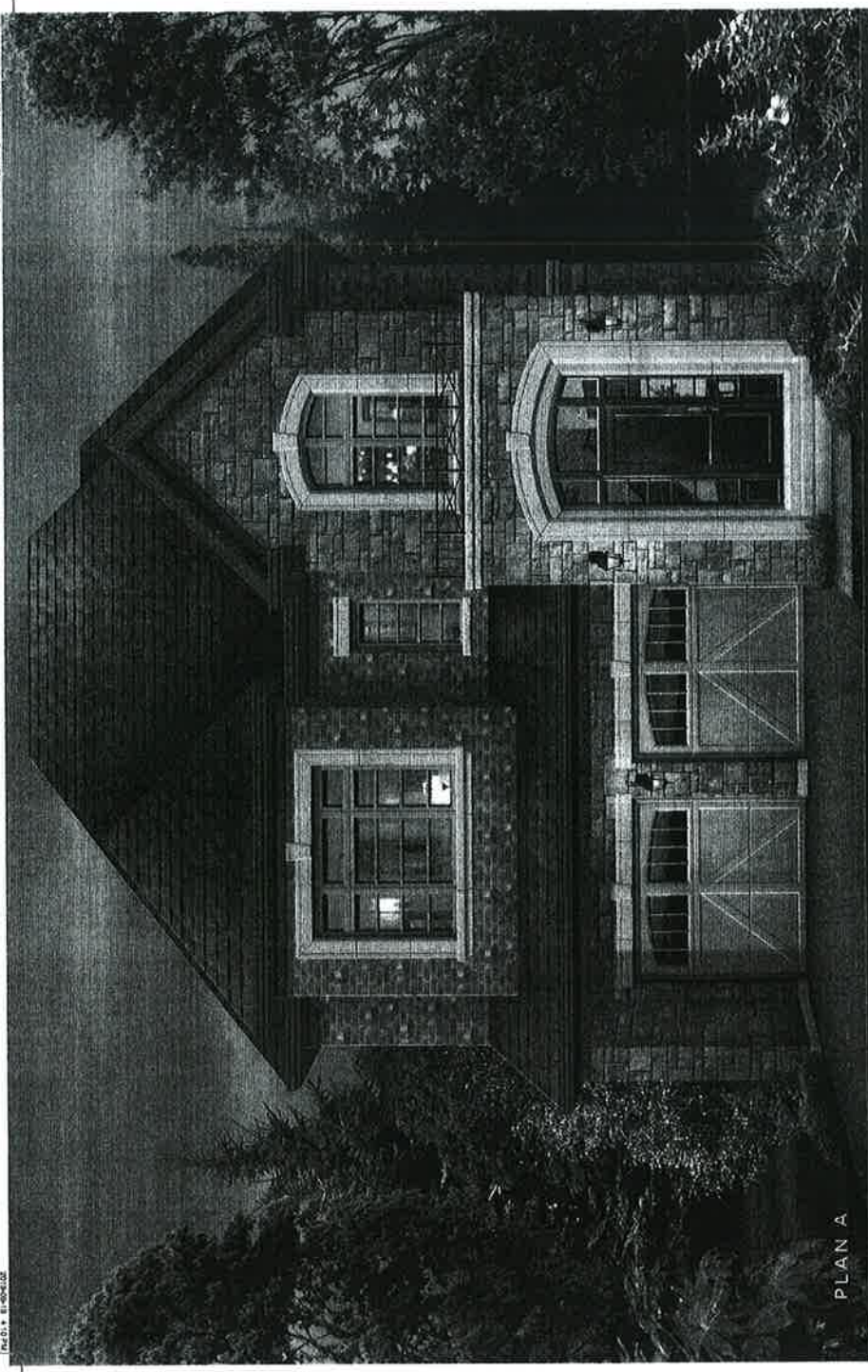
PLAN B

ORIOLE

3,587 SQ. FT.
INCLUDES 60 SQ. FT. ENCLOSED GARAGE



PLAN A



VALUING CAPABLE PEOPLE: THE EFFECT OF PERSONALITY AND PERSONALITY-RELATED FACTORS ON THE VALUATION OF CAPABLE PEOPLE

Pub 014 • 811-604-1102

96
XOXO

RECEIVED

SEP 14 2020