

Model KC GS556 ESS
Lot 89

INSTALLATION INSTRUCTIONS 30" (76.2 CM) AND 36" (91.4 CM) GAS BUILT-IN COOKTOP

INSTRUCTIONS D'INSTALLATION DE LA TABLE DE CUISSON À GAZ ENCASTRÉE DE 30" (76,2 CM) ET 36" (91,4 CM)

Table of Contents/Table des matières

COOKTOP SAFETY.....	2	SÉCURITÉ DE LA TABLE DE CUISSON.....	13
INSTALLATION REQUIREMENTS.....	3	EXIGENCES D'INSTALLATION.....	14
Tools and Parts.....	3	Outils et pièces.....	14
Location Requirements.....	3	Exigences d'emplacement.....	14
Electrical Requirements.....	7	Spécifications électriques.....	18
Gas Supply Requirements.....	7	Spécifications de l'alimentation en gaz.....	18
INSTALLATION INSTRUCTIONS.....	9	INSTRUCTIONS D'INSTALLATION.....	20
Install Cooktop.....	9	Installation de la table de cuisson.....	20
Make Gas Connection.....	9	Raccordement au gaz.....	20
Complete Installation.....	11	Achever l'installation.....	22

Cooktop
Model KC GS556 ESS
36"

IMPORTANT:

Installer: Leave installation instructions with the homeowner.
Homeowner: Keep installation instructions for future reference.

IMPORTANT :

Installateur : Remettre les instructions d'installation au propriétaire.
Propriétaire : Conserver les instructions d'installation pour référence ultérieure.

W11116971C

Lot 89

In the State of Massachusetts, the following installation instructions apply:

- Installations and repairs must be performed by a qualified or licensed contractor, plumber, or gasfitter qualified or licensed by the State of Massachusetts.
- Acceptable Shut-off Devices: Gas Cocks and Ball Valves installed for use shall be listed.
- A flexible gas connector, when used, must not exceed 4 feet (121.9 cm).

INSTALLATION REQUIREMENTS

Tools and Parts

Gather the required tools and parts before starting installation.

Tools needed

- | | |
|-------------------------------------|----------------------------------------|
| ■ Tape measure | ■ Wrench or pliers |
| ■ Flat-blade screwdriver | ■ Marker or pencil |
| ■ Phillips screwdriver | ■ Pipe-joint compound |
| ■ 15/16" (24 mm) combination wrench | ■ Noncorrosive leak-detection solution |
| ■ Pipe wrench | |

Parts supplied

- | | |
|--------------------------|---------------------------------|
| ■ Gas pressure regulator | ■ Clamping brackets (2) |
| ■ Burner grates | ■ Bracket attachment screws (2) |
| ■ Burner caps | |
| ■ Burner base | |

Parts needed

Check local codes and consult gas supplier. Check existing gas supply and electrical supply. See "Electrical Requirements" and "Gas Supply Requirements" sections.

Location Requirements

IMPORTANT: Observe all governing codes and ordinances. Do not obstruct flow of combustion and ventilation air.

- It is the installer's responsibility to comply with installation clearances specified on the model/serial rating plate. The model/serial rating plate is located on the underside of the cooktop base.



A. Model/serial rating plate

- The cooktop must be a specified cooktop that is approved to be installed either alone or over an undercounter built-in oven. Check the cooktop base approved installation label for your cooktop model number and approved combinations of cooktops and ovens that can be installed. If you do not find this label, your cooktop may not be approved for use over an undercounter built-in oven. Contact your dealer to confirm that your cooktop is approved.

- Ovens approved for this type of installation will have an approval label located on the top of the oven. If you do not find this label, contact your dealer to confirm that your oven is approved. Refer to oven manufacturer's installation instructions for approval for built-in undercounter use and proper cutout dimensions.

- The cooktop should be installed in a location away from strong draft areas, such as windows, doors and strong heating vents or fans.
- All openings in the wall or floor where cooktop is to be installed must be sealed.
- Cabinet opening dimensions that are shown must be used. Given dimensions are minimum clearances.
- Grounded electrical supply is required. See "Electrical Requirements" section. Proper gas supply connection must be available. See "Gas Supply Requirements" section.
- The cooktop is designed to hang from the countertop by its side or rear flanges.
- The gas and electric supply should be located as shown in "Cabinet Dimensions" section so that they are accessible without requiring removal of the cooktop.
- Provide cutout in right rear corner of cutout enclosure as shown to provide clearance for gas inlet, power supply cord, and to allow the rating label to be visible.

IMPORTANT: To avoid damage, check with your builder or cabinet supplier to make sure that the materials used will not discolor, delaminate or sustain other damage.

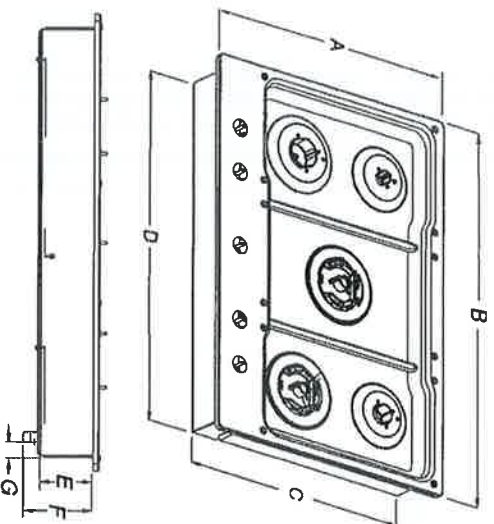
Mobile Home - Additional Installation Requirements

The installation of this cooktop must conform to the Manufactured Home Construction and Safety Standard, Title 24 CFR, Part 3280 (formerly the Federal Standard for Mobile Home Construction and Safety, Title 24, HUD Part 280). When such standard is not applicable, use the Standard for Manufactured Home Installations, ANSI A225.1/NFPA 501A or with local codes.

In Canada, the installation of this cooktop must conform with the current standards CAN/CSA-A240-latest edition, or with local codes.

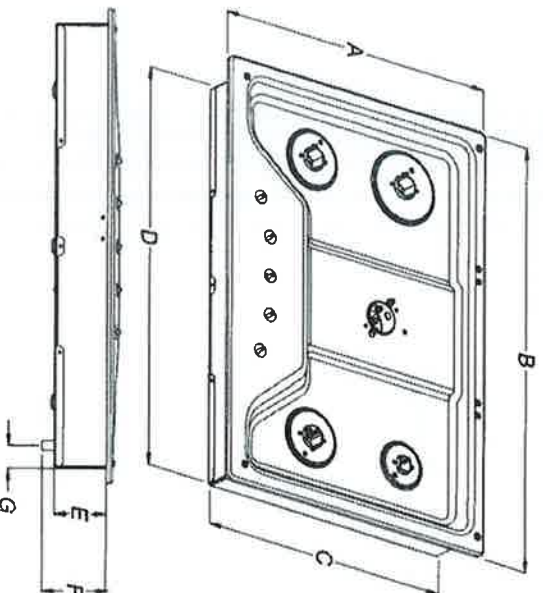
Product Dimensions

KCGS550ESS and KCGS950ESS Models



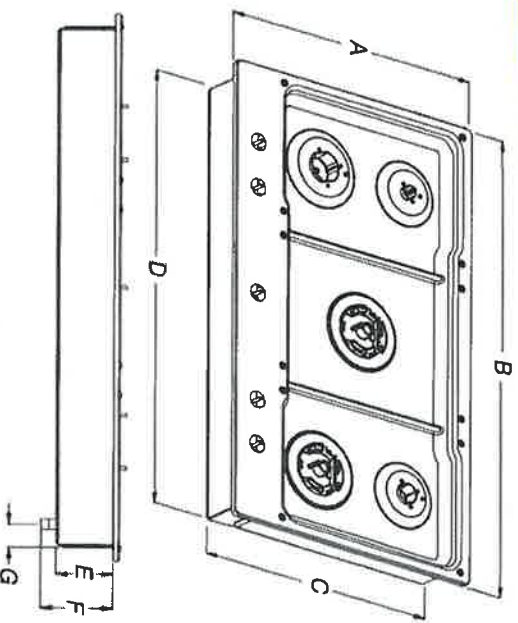
- | | |
|-------------------|------------------|
| A. 21" (53.3 cm) | E. 3½" (9.2 cm) |
| B. 30" (76.2 cm) | F. 4⅞" (11.6 cm) |
| C. 19¾" (49.2 cm) | G. 1⅞" (3.4 cm) |
| D. 28½" (72.1 cm) | |

All Other 30" (76.2 cm) Models



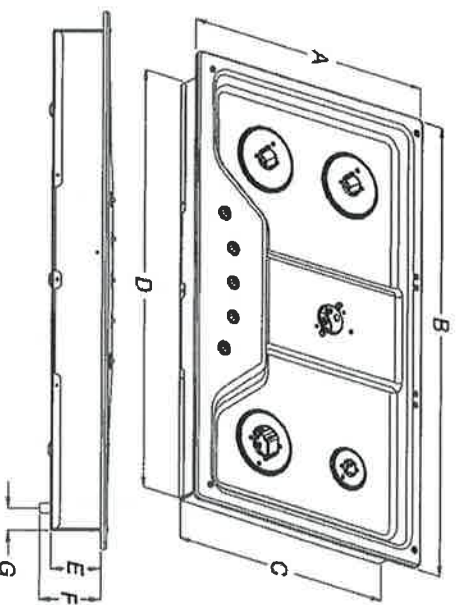
- | | |
|-------------------|------------------|
| A. 21" (53.3 cm) | E. 3½" (8.6 cm) |
| B. 30" (76.2 cm) | F. 4⅞" (10.5 cm) |
| C. 18½" (48.0 cm) | G. 1½" (3.8 cm) |
| D. 28½" (72.1 cm) | |

KCGS556ESS and KCGS956ESS Models



- | | |
|-------------------|------------------|
| A. 21" (53.3 cm) | E. 3½" (9.2 cm) |
| B. 36¼" (92.0 cm) | F. 4⅞" (11.6 cm) |
| C. 19¾" (49.2 cm) | G. 1⅞" (3.6 cm) |
| D. 34¾" (88.1 cm) | |

All Other 36" (91.4 cm) Models



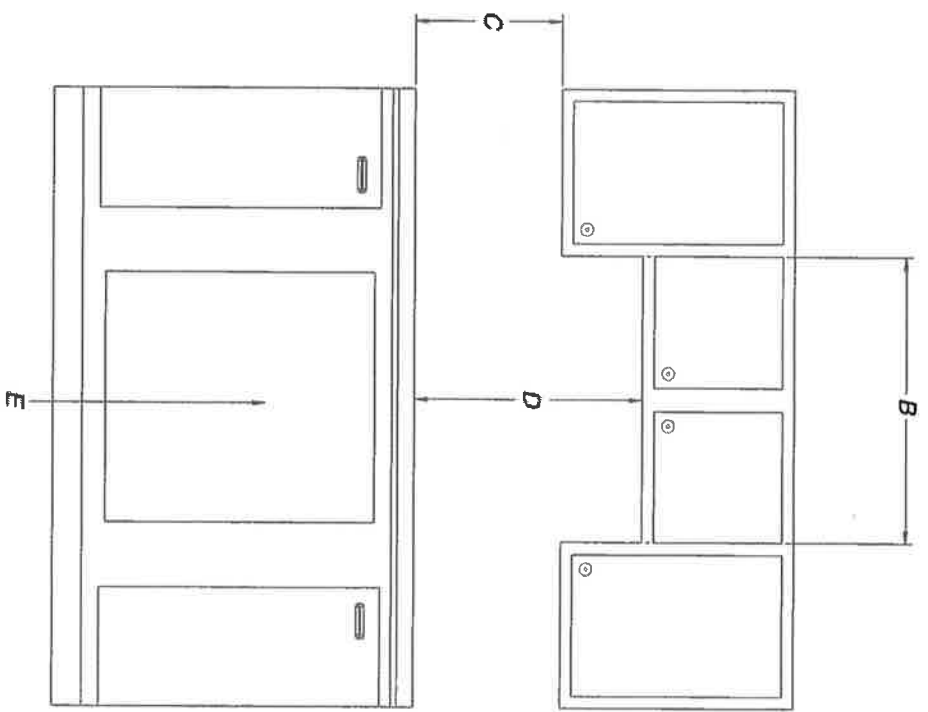
- | | |
|-------------------|------------------|
| A. 21" (53.3 cm) | E. 3½" (8.6 cm) |
| B. 36" (91.4 cm) | F. 4⅞" (10.5 cm) |
| C. 18½" (48.0 cm) | G. 1½" (3.8 cm) |
| D. 33¾" (85.7 cm) | |

Cabinet Clearances

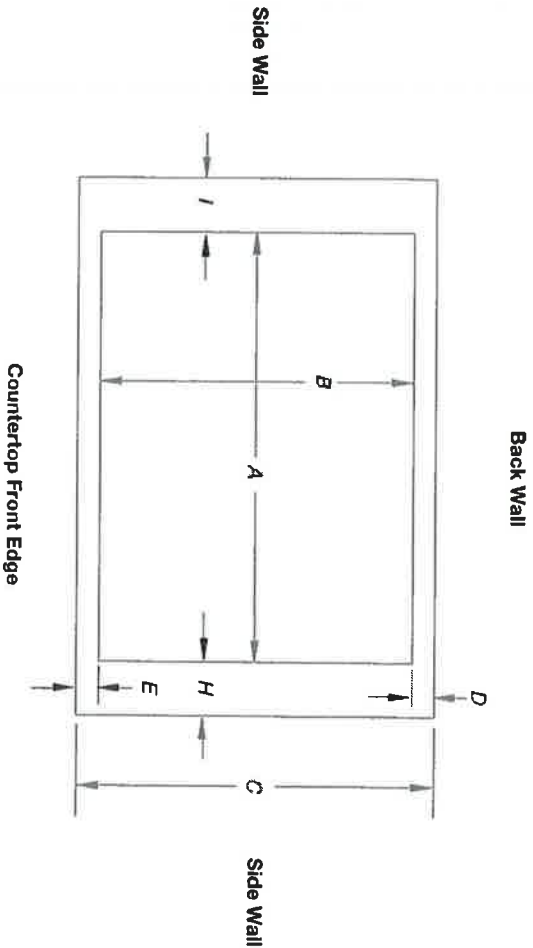
Side View



Front View



- A. 13" (33.0 cm) recommended upper cabinet depth.
- B. 30" (76.2 cm) for 30" models; 36" (91.4 cm) for 36" models.
- C. 18" (45.7 cm) minimum clearance from upper cabinet to countertop within minimum horizontal clearances to cooktop.
- D. 30" (76.2 cm) minimum clearance between top of cooktop platform and bottom of uncovered wood or metal cabinet. 24" (61 cm) minimum clearance if bottom of wood or metal cabinet is covered by not less than 1/4" (0.6 cm) flame retardant millboard covered with not less than No. 28 MSG steel, 0.015" (0.04 cm) stainless steel, or 0.024" (0.06 cm) aluminum or 0.020" (0.05 cm) copper.
- E. Gas line opening - Wall: anywhere 5" (12.7 cm) below underside of countertop. Cabinet floor: anywhere within 6" (15.2 cm) of rear wall is recommended.



Cutout (Product Opening) Dimensions						
30" (76.2 cm) Models						
Models	A			B		
	Min	Recommended	Max	Min	Recommended	Max
KCGS550 and KCGS950 All Other 30" (76.2 cm) Models	28½" (72.4 cm) 28½" (72.4 cm)	28¾" (73.4 cm) 28¾" (73.4 cm)	29¾" (74.3 cm) 29¾" (74.3 cm)	19½" (49.5 cm) 19" (48.3 cm)	19¾" (50.2 cm) 19½" (49.5 cm)	20" (50.8 cm) 20" (50.8 cm)
36" (91.4 cm) Models						
KCGS556 and KCGS956 All Other 36" (91.4 cm) Models	34½" (88.4 cm) 33¾" (86.0 cm)	35¾" (89.4 cm) 34¾" (87.0 cm)	36¾" (90.3 cm) 35½" (89.5 cm)	19½" (49.5 cm) 19" (48.3 cm)	19¾" (50.2 cm) 19½" (49.5 cm)	20" (50.8 cm) 20" (50.8 cm)

Side Walls (Combustible Surfaces)	
Models	H and I
KCGS5 and KCGS9	H and I added together must be at least 48" (122.0 cm), with each side individually being at least 8" (20.3 cm).
KCGS350, KCGS356, MGC9536, WCG97U50, WCG97U56	H and I added together must be at least 48" (122.0 cm), with each side individually being at least 12" (30.5 cm).
All Other Models	Both have to be 8" (20.3 cm) or more.

Back Wall and Countertop Front Dimensions			
Models	C	D	E
KCGS550 and KCGS950	25" (63.5 cm)	2 7/8" (7.3 cm)	2 9/16" (6.9 cm)
All Other Models			3 1/8" (7.9 cm)

NOTES: After making the countertop cutout, some installations may require notching down the base cabinet side walls to clear the cooktop base. To avoid this modification, use a base cabinet with sidewalls wider than the cutout.

If cabinet has a drawer, a 4" (10.2 cm) depth clearance from the countertop to the top of the drawer (or other obstruction) in base cabinet is required. The drawer depth may need to be shortened to avoid interfering with the regulator.

IMPORTANT: If a built-in wall oven is to be installed below this cooktop, the grounded outlet and gas supply piping must be located in an adjacent cabinet. If installing a range hood or microwave hood combination above the cooking surface, follow the range hood or microwave hood combination installation instructions for dimensional clearances above the cooktop surface.

This cooktop and its gas and electrical supply sources must be installed before the undercounter built-in wall oven is installed.

Dimensions

CUTOUT DEPTH	50.32 cm, 19.13/16 in	CUTOUT DEPTH MAX	50.80 cm, 20.0 in
CUTOUT DEPTH MIN	49.53 cm, 19.1/2 in	CUTOUT HEIGHT	13.34 cm, 5.1/4 in
CUTOUT WIDTH	89.38 cm, 35.3/16 in	CUTOUT WIDTH MAX	90.49 cm, 35.5/8 in
CUTOUT WIDTH MIN	88.53 cm, 34.7/8 in	DEPTH	53.34 cm, 21.0 in
HEIGHT	22.27 cm, 8.77/16 in	MAXIMUM HEIGHT	10.95 cm, 4.5/16 in
WIDTH	91.44 cm, 36.0 in		

Configuration and Overview

COOKTOP TYPE	Standard	FUEL TYPE	Gas
INSTALLS OVER BUILT-IN OVEN	Yes	LP CONVERTIBLE	Yes - Kit included
POWER BOOST	No	SIZE	91.44 cm, 36 in

Controls

CONTROL LOCATION	Front	INFINITE HEAT CONTROLS	Yes
KNOB COLOR	Stainless Steel	KNOB TYPE	Metal

Cooktop Details

AUTOMATIC PAN DETECTION	No	CENTER REAR ELEMENT BURNER POWER	20,000 BTU
-------------------------	----	----------------------------------	------------

Cooktop
Model# KC ES5J8 ESS

Lot 89

Lot 89

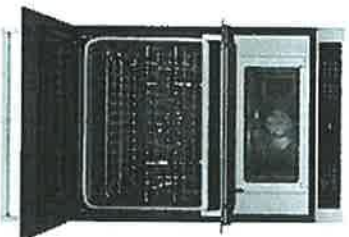
Product Overview

30" COMBINATION WALL OVEN WITH EVEN-HEAT™ TRUE CONVECTION (LOWER OVEN)

This 30" Combination Wall Oven with Even-Heat™ True Convection provides consistent heating and even cooking. A unique bow-tie shaped design and convection fan helps ensure there are no burnt edges or under cooked centers. Its upper Microwave Convection Cooking Oven combines a 900 watt microwave with a 1600 watt convection element for high speed cooking. Bold design details are the perfect balance of elegance and functionality.

*Kitchen Aid Model**KOCE500ESS*

Features



Even-Heat™ True Convection Oven (lower oven)

Produces flawless results. The unique bow-tie design and convection fan ensure the inside of the oven is heated to, and stays at, the perfect temperature.

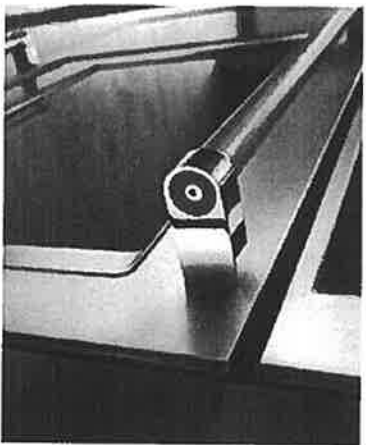


Microwave Convection Cooking (upper oven)

Combines the power of a 900 watt microwave with a 1600 watt convection element to increase the speed of cooking and provide a secondary convection option.



Lot 89



Professionally-Inspired Design (VBL Light)

Combines a bold blend of professionally-inspired styling with sleek touches for the home. This beautiful built-in wall oven features Satin Textured Handles and the KitchenAid® Badge, a symbol of uncompromised quality.

Additional Features

TEMPERATURE PROBE

Allows accurate measurement of internal temperatures of meats, poultry, and casseroles without having to open the oven so that food can be cooked perfectly.

EASYCONNECT™ CONVERSION SYSTEM

Takes guesswork out of convection cooking by ensuring you can get exceptional results when experimenting with new or familiar recipes.

VIEW MORE

Customer Reviews +

Specifications -

Dimensions

CAPACITY	6-2/5
CUTOUT DEPTH	60.96 cm, 24.0 in
CUTOUT HEIGHT	104.93 cm, 41-5/16 in
CUTOUT WIDTH	72.39 cm, 28-1/2 in

Lot 89

DEPTH	68.90 cm, 27-1/8 in
DEPTH CLOSED EXCLUDING HANDLES	62.23 cm, 24-1/2 in
DEPTH WITH DOOR OPEN 90 DEGREE	118.74 cm, 46-3/4 in
HEIGHT	107.95 cm, 42-1/2 in
MICROWAVE CAPACITY	39.62 l, 1.4 cu. ft.
OVEN CAPACITY	141.50 l, 5.0 cu. ft.
WIDTH	76.20 cm, 30.0 in

Configuration and Overview

CUL	Yes
FUEL TYPE	Electric
OVEN TYPE	Combination
SIZE	76.20 cm, 30 in

Oven Details

AUTOMATIC SHUT-OFF	Yes
BAKE ELEMENT POWER	2800W
BROILER LOCATION	Top of Oven
CONVECTION FUNCTIONS	Bake, Broil, Roast
DOOR BROIL POSITION	Closed
DOOR LOCK	Yes
DOOR REMOVABLE	Yes
HIDDEN BAKE ELEMENT	Yes
INTERIOR COLOR	Blue
LANGUAGE CONVERSION	English/French
NUMBER OF OVEN LIGHTS	2
NUMBER OF OVEN RACKS	3
NUMBER OF RACK GUIDES	6
OVEN COOKING SYSTEM	Convection
OVEN INTERIOR DEPTH	48.26 cm, 19.0 in

KitchenAid® 27" (68.6 cm) and 30" (76.2 cm) Electric Built-In Microwave/Oven Combination

PRODUCT DIMENSIONS

PRODUCT MODEL NUMBERS

KEMS309E KOCE500E KOCE507E

ELECTRICAL CONNECTION

If codes permit and a separate ground wire is used, it is recommended that a qualified electrical installer determine that the ground path and the wire gauge are in accordance with local codes. Check with a qualified electrical installer if you are not sure the oven is properly grounded.

This oven must be connected to a grounded metal, permanent wiring system.

Be sure that the electrical connection and wire size are adequate and in conformance with the National Electrical Code, ANSI/NFPA 70-latest edition or CSA Standards C22.1-94, Canadian Electrical Code, Part 1 and C22.2 No. 0-M91-latest edition, and all local codes and ordinances.

To properly install your oven, you must determine the type of electrical connection you will be using and follow the instructions provided for it here.

• Oven must be connected to the proper electrical voltage and frequency as specified on the model/serial/rating plate. See the following illustration.



A. Model/serial/rating plate

- Models rated from 7.3 to 9.6 kW at 240 volts (5.4 to 7.4 kW at 208 volts) require a separate 40-amp circuit. Models rated at 4.8 kW and below at 240 volts (3.6 kW and below at 208 volts) require a separate 30-amp circuit.
- A circuit breaker is recommended.
- Connect directly to the fused disconnect (or circuit breaker box) through flexible, armored or nonmetallic sheathed, copper cable (with grounding wire). See "Make Electrical Connection" section.
- Flexible conduit from the oven should be connected directly to the junction box.
- Do not cut the conduit. The length of conduit provided is for serviceability of the oven.
- A UL listed or CSA approved conduit connector must be provided.
- If the house has aluminum wiring, follow the procedure below:
 1. Connect a section of solid copper wire to the pigtail leads.
 2. Connect the aluminum wiring to the added section of copper wire using special connectors and/or tools designed and UL listed for joining copper to aluminum.

Follow the electrical connector manufacturer's recommended procedure. Aluminum/copper connection must conform with local codes and industry accepted wiring practices.

For power requirements, refer to the following table.

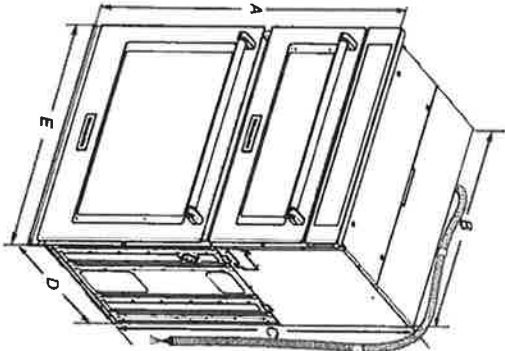
Model	Voltage	Amperage (L1)*	Amperage (L2)*	Rating (W)
KOCE507E/KOCE500E	120/240	32	30	8000
KOCE507E/KOCE500E	120/208	30	28	6600

*Amperage values noted above are for information purposes only; the units are rated in watts.

Because Whirlpool Corporation includes a continues commitment to improve our products, we reserve the right to change materials and specifications without notice.

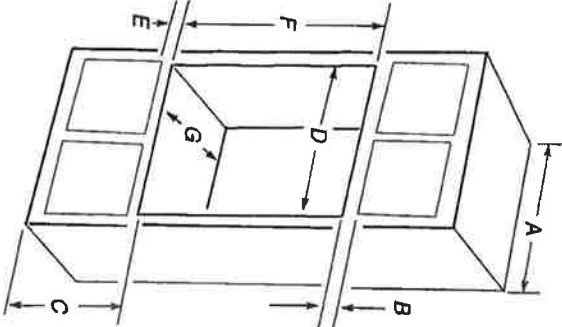
Dimensions are for planning purposes only. For complete details, see installation instructions packed with product. Specifications subject to change without notice.

Ref. W10725683B
27/07/15



- 27" (68.6 cm) models**
- A. 42³/₄" (108.0 cm) overall height
 - B. 25¹/₄" (64.6 cm) recessed width
 - C. 41" (104.1 cm) recessed height
 - D. 23¹/₄" (59.1 cm) max. recessed depth
 - E. 27" (68.6 cm) overall width
 - F. 48" (121.9 cm) flexible conduit length measured from the conduit clamp located at the rear of the oven. Do not remove the conduit clamp.
- 30" (76.2 cm) models**
- A. 42³/₄" (108.0 cm) overall height
 - B. 28¹/₄" (72.3 cm) recessed width
 - C. 41" (104.1 cm) recessed height
 - D. 23¹/₄" (59.1 cm) max. recessed depth
 - E. 30" (76.2 cm) overall width
 - F. 48" (121.9 cm) flexible conduit length measured from the conduit clamp located at the rear of the oven. Do not remove the conduit clamp.

Cabinet Dimensions



- 27" (68.6 cm) models**
- A. 27" (68.6 cm) min. cabinet width
 - B. 1" (2.5 cm) top of cutout to bottom of upper cabinet door
 - C. 19¹/₄" (48.9 cm) bottom of cutout to floor is recommended.
 - D. 25¹/₄" (64.8 cm) bottom of cutout to floor is acceptable.
 - E. 1¹/₂" (3.8 cm) min. bottom of cutout to top of cabinet door
 - F. 41³/₄" (105 cm) recommended cutout height
 - G. 24" (60.7 cm) cutout depth
- 30" (76.2 cm) models**
- A. 30" (76.2 cm) min. cabinet width
 - B. 1" (2.5 cm) top of cutout to bottom
 - C. 19¹/₄" (48.9 cm) bottom of cutout to floor is recommended.
 - D. 28¹/₄" (72.4 cm) bottom of cutout to floor is acceptable.
 - E. 1¹/₂" (3.8 cm) min. bottom of cutout
 - F. 41³/₄" (105 cm) recommended cutout
 - G. 24" (60.7 cm) cutout depth

*NOTE: The cabinet height can be between 41" (104.1 cm) and 41 1/2" (105.6 cm) for microwave/oven combination.

Lot 89

OVEN INTERIOR HEIGHT	45.72 cm, 18.0 in
OVEN INTERIOR WIDTH	63.50 cm, 25.0 in
OVEN LIGHT TYPE	Halogen
OVEN RACK 1 TYPE	Standard
OVEN RACK 2 TYPE	Standard
OVEN RACK 3 TYPE	Gliding Roll-Out
SELF-CLEANING OVEN RACKS	No

Appearance

DOOR TYPE	Metal & Glass
FLUSH INSTALLATION APPROVED	Yes
HANDLE COLOR	Stainless Steel
HANDLE MATERIAL	Metal

Microwave Details

CONVECTION	Yes
CONNECTION POWER	1200 W, 1200 W, 1200 W, 1200 W
COOKING POWER	900 W, 900 W, 900 W, 900 W
DOOR SWING	Drop Down
GRILL	Yes
GRILL POWER	1600.0 W, 1600.0 W, 1600.0 W, 1600.0 W
INTERIOR LIGHT	Halogen
MICROWAVE SELECTIONS	Baking Rack, Add A Minute, Cook Power, Cook Time, Crisp Pan, Defrost, Easy Convect, Popcorn, Reheat, Soften/Melt, Steam, Steam Accessory
SENSOR COOKING	Yes - Microwave
TURNTABLE	Yes
TURNTABLE DIAMETER SIZE	35.88 cm, 14-1/8 in

Details

BAKE ELEMENT POWER	2800W
BROILER ELEMENT POWER	4000W

