

# CONSTRUCTION SUMMARY

North Oakville - 101 - 1 - OSPREY (38-10) Elev A

Register Plan Number: Municipal Address: Closing: 20-May-21

## CONSTRUCTION

Inv.107	1 - SIDE DOOR (WHERE GRADE IS PERMITTED)
1	UNFINISHED BASEMENT
Line 1505	Note:
4Jun20 / 4Jun20	
Inv.153	1 - MASTER ENSUITE SHOWER. MOVE SHOWER LOCATION INTO WALK-IN CLOSET. SEE SKETCH. DOOR INTO THE WALK-IN CLOSET MUST BE MOVED TO ACCOMMODATE THIS CHANGE.
4	
Line 2398	Note:
5Aug20 / 14Oct20	

## ELECTRICAL

Inv.153	1 - KITCHEN: INSTALL RECEPTACLES - ADDITIONAL 15 AMP 120 VOLT RECEPTABLE FOR GAS STOVE
10	
Line 2403	Note:
5Aug20 / 14Oct20	
Inv.153	1 - KITCHEN: INSTALL ELECTRICAL - ROUGH-IN FOR 30 - 40 AMP BUILT-IN WALL OVEN. SEE SKETCH
11	
Line 2404	Note:
5Aug20 / 14Oct20	
Inv.153	1 - BELL AND CABLE LOCATION SKETCH. LOCATIONS MAY VARY SLIGHTLY DUE TO JOIST LOCATIONS
3	
Line 2397	Note:
5Aug20 / 14Oct20	
Inv.153	1 - GREAT ROOM: INSTALL RECEPTACLES - DEDICATED 15 AMP 120 VOLT RECEPTABLE FOR TV ABOVE FIREPLACE
13	
Line 2410	Note:
5Aug20 / 14Oct20	

## HARDWOOD FLOORING

Inv.107	1 - NATURAL OAK HARDWOOD THROUGHOUT SECOND LEVEL INCLUDING THE BEDROOMS
2	
Line 1506	Note:
4Jun20 / 4Jun20	

## HVAC

Inv.153	1 - KITCHEN: INSTALL GAS PIPING AND OTHER - GAS LINE R/I FOR MAIN FLOOR - STOVE - UP TO 3/4 INCH LINE
9	
Line 2402	Note:
5Aug20 / 14Oct20	

## INTERIOR DOORS & TRIM

Inv.153	1 - KITCHEN: MOVE LOCATION OF BACK DOOR TO THE BREAKFAST AREA. SEE SKETCH
5	
Line 2405	Note:
5Aug20 / 14Oct20	

## MISCELLANEOUS

Inv.153	1 - Purchaser has attended a Structural appointment at the Decor Centre & has DECLINED any additional upgrades and accepts and acknowledges that there will be no further structural changes/additions/deletions to be made upon signing
14	
Line 2407	Note:
5Aug20 / 14Oct20	



CONSTRUCTION SUMMARY

North Oakville - 101 - 1 - OSPREY (38-10) Elev A

Registere Plan Number:    Municipal Address:    Closing: 20-May-21

Inv.153	1 - Purchasers are aware & accepts that ANY changes made to upgrades after signing this Purchasers
15	Extra Form are subject to a minimum administration fee
Line 2408	Note:
5 Aug20 / 14 Oct20	

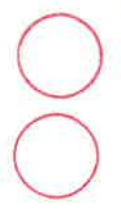
PLUMBING

Inv.153	1 - KITCHEN: RELOCATE THE SINK AND DISHWASHER TO THE BACK WALL, WHERE
6	INDICATED ON THE FLOOR PLAN.
Line 2406	PURCHASER IS REQUIRED TO PURCHASE APPROPRIATE CABINETRY AND COUNTER TOP
	TO ACCOMODATE THIS CHANGE AT THE COLOUR APPOINTMENT
Line 2406	Note:
5 Aug20 / 14 Oct20	
Inv.153	1 - KITCHEN: INSTALL EXTRA ROUGH-IN LINE FOR FRIDGE ICE MAKER WITH SHUT-OFF
7	
Line 2400	Note:
5 Aug20 / 14 Oct20	
Inv.153	1 - BACKFLOW PREVENTER VALVE
8	
Line 2401	Note:
5 Aug20 / 14 Oct20	

VACCUM/BELL

Inv.153	1 - GREAT ROOM: INSTALL CONDUIT - 1 1/4" ORANGE FLEX CONDUIT APPROX. 35FT FOR
12	FIREPLACE
Line 2409	Note:
5 Aug20 / 14 Oct20	

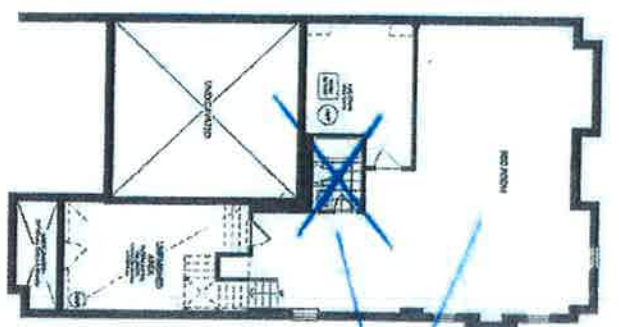
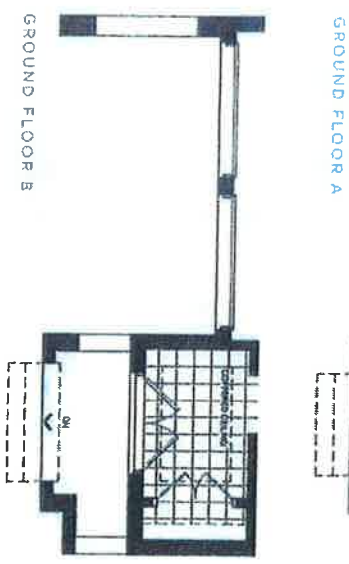
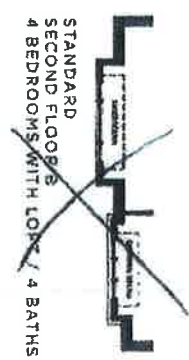
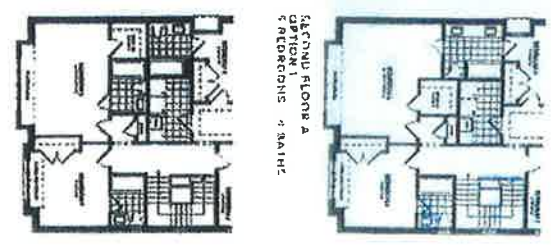
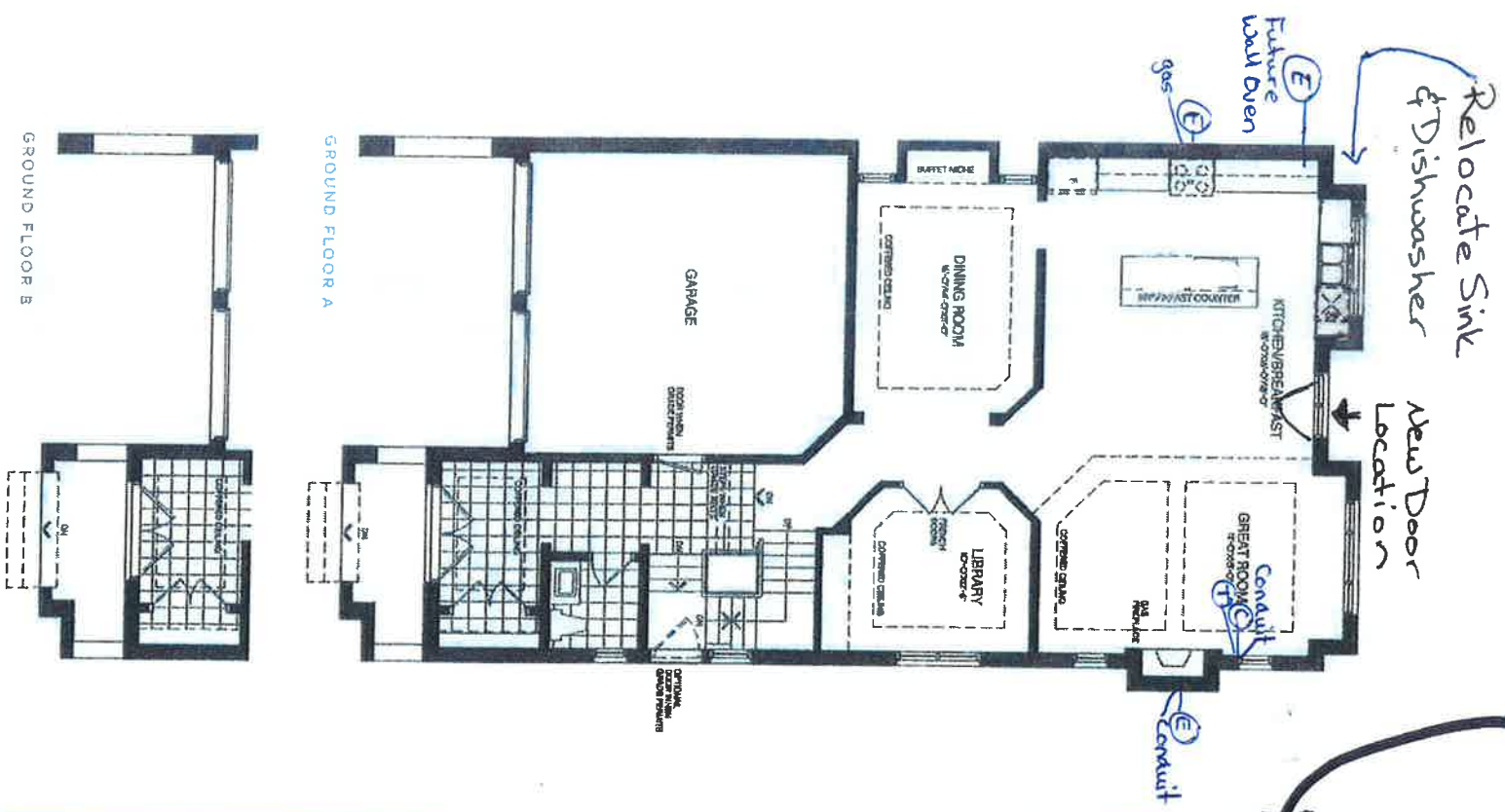
Lot 101



Move location of  
Ensuite Shower  
into a portion of  
the walk-in closet.  
Move closet door to  
accomodate

# OSPREY

3,900 SQ. FT.  
INCLUDES 749 SQ. FT. FINISHED BASEMENT



All dimensions are approximate and subject to normal construction variances. Measurements may enclose the usable floor area. Since all specifications are subject to change without notice, no liability is accepted for illustration purposes only and does not necessarily reflect the electrical plan for the site. Sales are sold subject to all restrictions, covenants, conditions and restrictions. For further details, E&O E. Valery Homes 2019. All rights reserved.

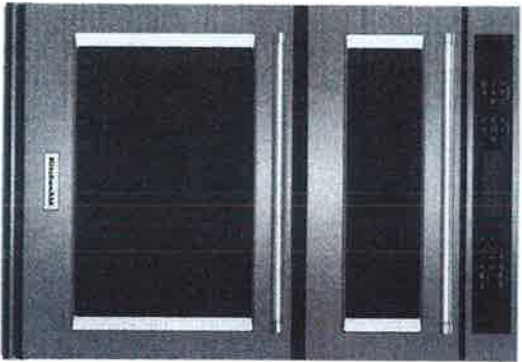
RECEIVED  
OCT 14 2020

Kot 101



# 30" Combination Wall Oven

KOCE500E



Stainless Steel  
KOCE500ESS

Also available in:

- White KOCE500EWH
- Black KOCE500EBL
- Black Stainless KOCE500EBS

## Key Features & Benefits

### Even-Heat™ True Convection Oven (lower oven)

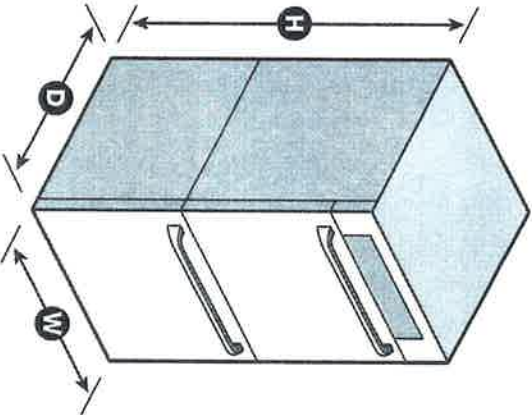
Provides consistent heating and even cooking on all racks with a unique bow-tie shaped design and convection fan that helps ensure the most even baking.

### Microwave Convection Cooking (upper oven)

Increases the speed of cooking and provides a secondary convection cooking option.

### Professionally-Inspired Design

Combines a bold blend of professionally-inspired styling with sleek touches for the home. This beautiful built-in wall oven features Satin Textured Handles and the KitchenAid® Badge, a symbol of uncompromised quality.



Capacity	
Oven	6.4 cu. ft.
General Features & Properties	
Temperature Probe	
EasyConnect™ Conversion System	
5.0 Cu. Ft. Total Capacity (lower oven)	
1.4 Cu. Ft. Capacity (upper oven)	
Crispwave™ Microwave Technology and Crisper Pan (upper oven)	
SatinGlide™ Roll-Out Extension Rack (lower oven)	
Electrical Details	
Amps	40
Volts	240

Technical Details	
Fuel Type	Electric
Oven Type	Combination
Number of Oven Racks	3
Cleaning Type	Adjustable Self-Cleaning
Dimensions	
Product Dimensions (H x W x D)	42-1/2" x 30" x 27-1/8"
Depth with Door Open 90°	46-3/4"
Cutout Dimensions (H x W x D)	41-5/16" x 28-1/2" x 24"
Reference Material	
<a href="#">Dimension Guide</a>	
<a href="#">Install Guide</a>	
<a href="#">Use &amp; Care Guide</a>	
<a href="#">Warranty</a>	

NOTE: Dimensions are for planning purposes only. For complete details, see Installation Instructions packed with product. Specifications subject to change without notice.  
®/™ © 2020. All rights reserved. Printed in the U.S.A. D200104XXE\_KOCE500ESSpecSheetV01.

RECEIVED  
OCT 14 2020



207 101

# KitchenAid® 27" (68.6 cm) and 30" (76.2 cm) Electric Built-In Microwave/Oven Combination

## PRODUCT MODEL NUMBERS

KEMS309E	KOCE500E	KOCE507E
----------	----------	----------

## ELECTRICAL CONNECTION

If codes permit and a separate ground wire is used, it is recommended that a qualified electrical installer determine that the ground path and the wire gauge are in accordance with local codes. Check with a qualified electrical installer if you are not sure the oven is properly grounded.

This oven must be connected to a grounded metal, permanent wiring system.

Be sure that the electrical connection and wire size are adequate and in conformance with the National Electrical Code, ANSI/NFPA 70-latest edition or CSA Standards C22.1-94, Canadian Electrical Code, Part 1 and C22.2 No. O-M91-latest edition, and all local codes and ordinances.

To properly install your oven, you must determine the type of electrical connection you will be using and follow the instructions provided for it here.

- Oven must be connected to the proper electrical voltage and frequency as specified on the model/serial/rating plate. See the following illustration.



A. Model/serial/rating plate

- Models rated from 7.3 to 9.6 kW at 240 volts (5.4 to 7.4 kW at 208 volts) require a separate 40-amp circuit. Models rated at 4.8 kW and below at 240 volts (3.6 kW and below at 208 volts) require a separate 30-amp circuit.
- A circuit breaker is recommended.
- Connect directly to the fused disconnect (or circuit breaker box) through flexible, armored or nonmetallic sheathed, copper cable (with grounding wire). See "Make Electrical Connection" section.
- Flexible conduit from the oven should be connected directly to the junction box.
- Do not cut the conduit. The length of conduit provided is for serviceability of the oven.
- A UL listed or CSA approved conduit connector must be provided.
- If the house has aluminum wiring, follow the procedure below:
  1. Connect a section of solid copper wire to the pigtail leads.
  2. Connect the aluminum wiring to the added section of copper wire using special connectors and/or tools designed and UL listed for joining copper to aluminum.

Follow the electrical connector manufacturer's recommended procedure. Aluminum/copper connection must conform with local codes and industry accepted wiring practices.

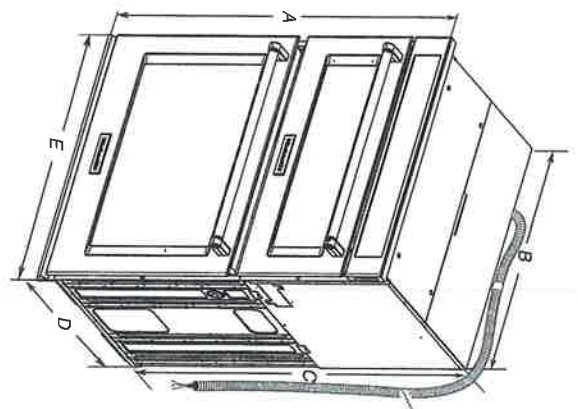
For power requirements, refer to the following table.

Model	Voltage	Amperage (L1)*	Amperage (L2)*	Rating (W)
KOCE507E/KOCE500E	120/240	32	30	8000
KOCE507E/KOCE500E	120/208	30	28	6600

\* Amperage values noted above are for information purposes only; the units are rated in watts.

Because Whirlpool Corporation includes a continues commitment to improve our products, we reserve the right to change materials and specifications without notice.

## PRODUCT DIMENSIONS



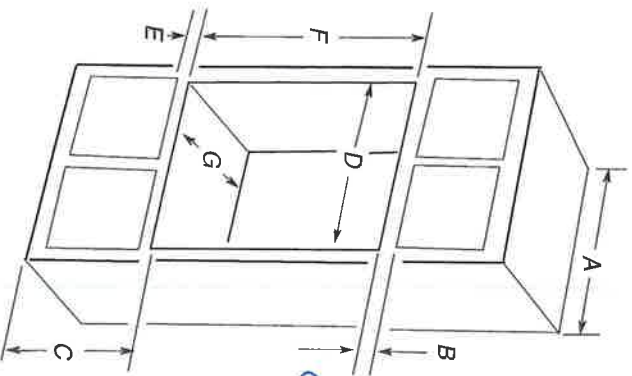
### 27" (68.6 cm) models

- A. 42<sup>9</sup>/<sub>16</sub>" (108.0 cm) overall height
- B. 25<sup>7</sup>/<sub>16</sub>" (64.6 cm) recessed height
- C. 41" (104.1 cm) recessed width
- D. 23<sup>1</sup>/<sub>2</sub>" (59.1 cm) max. recessed depth
- E. 27" (68.6 cm) overall width
- F. 48" (121.9 cm) flexible conduit length measured from the conduit clamp located at the rear of the oven. Do not remove the conduit clamp.

### 30" (76.2 cm) models

- A. 42<sup>9</sup>/<sub>16</sub>" (108.0 cm) overall height
- B. 28<sup>7</sup>/<sub>16</sub>" (72.3 cm) recessed width
- C. 41" (104.1 cm) recessed height
- D. 23<sup>1</sup>/<sub>2</sub>" (59.1 cm) max. recessed depth
- E. 30" (76.2 cm) overall width
- F. 48" (121.9 cm) flexible conduit length measured from the conduit clamp located at the rear of the oven. Do not remove the conduit clamp.

## Cabinet Dimensions



### 27" (68.6 cm) models

- A. 27" (68.6 cm) min. cabinet width
- B. 1" (2.5 cm) top of cutout to bottom of upper cabinet door
- C. 19<sup>1</sup>/<sub>2</sub>" (48.9 cm) bottom of cutout to floor is recommended
- D. 25<sup>1</sup>/<sub>2</sub>" (64.8 cm) bottom of cutout to floor is acceptable
- E. 1<sup>1</sup>/<sub>2</sub>" (3.8 cm) min. bottom of cutout to top of cabinet door
- F. 41<sup>5</sup>/<sub>16</sub>" (105 cm)\* recommended cutout height
- G. 24" (60.7 cm) cutout depth

### 30" (76.2 cm) models

- A. 30" (76.2 cm) min. cabinet width
- B. 1" (2.5 cm) top of cutout to bottom
- C. 19<sup>1</sup>/<sub>2</sub>" (48.9 cm) bottom of cutout to floor is recommended
- D. 28<sup>1</sup>/<sub>2</sub>" (72.4 cm) bottom of cutout to floor is acceptable
- E. 1<sup>1</sup>/<sub>2</sub>" (3.8 cm) min. bottom of cutout
- F. 41<sup>5</sup>/<sub>16</sub>" (105 cm)\* recommended cutout
- G. 24" (60.7 cm) cutout depth

\* NOTE: The cabinet height can be between 41" (104.1 cm) and 41<sup>1</sup>/<sub>2</sub>" (105.6 cm) for microwave/oven combination.

Dimensions are for planning purposes only. For complete details, see installation instructions packed with product. Specifications subject to change without notice.

Ref. W1072563B  
2/10/15

RECEIVED  
OCT 14 2020