



CONSTRUCTION SUMMARY

North Oakville - 113 - 1 - WILLOW VALLEY (43-02) ELEV C

Register Plan Number: Municipal Address: Closing: 9-Jul-20
CABINETRY

Inv.35	1 - KITCHEN: INSTALL 30" SLIDE-IN PREP FOR GRANITE (29H)
13	Note:
Line 496	
30Oct19 / 1Nov19	
Inv.35	1 - KITCHEN: DELETE CABINETS ABOVE STOVE FOR FUTURE CHIMNEY HOOD FAN
14	Note:
Line 497	
30Oct19 / 1Nov19	
Inv.35	1 - KITCHEN: INSTALL VALANCE IN KITCHEN- DOES NOT INCLUDE LIGHT
15	Note:
Line 498	
30Oct19 / 1Nov19	
Inv.35	1 - KITCHEN: INSTALL DEEP FRIDGE CABINET (03H)
16	Note:
Line 499	
30Oct19 / 1Nov19	
Inv.35	1 - KITCHEN: INSTALL POT AND PAN DRWER IN ISLAND
17	Note:
Line 500	
30Oct19 / 1Nov19	
Inv.35	22 - KITCHEN: INSTALL STACKED CABINETS THROUGHOUT KITCHEN- SEE SKETCH FOR DIMENTIONS
18	Note:
Line 501	
30Oct19 / 1Nov19	

CERAMIC TILE

Inv.35	1 - ENTRY/POWDER ROOM: INSTALL UPGRADE 6 TILE THROUGHOUT ENTRY AND POWDER ROOM
19	Note:
Line 502	
30Oct19 / 1Nov19	
Inv.35	1 - KITCHEN: INSTALL UPGRADE 6 TILE THROUGHOUT KITCHEN IN LIEU OF HARDWOOD
20	Note:
Line 503	
30Oct19 / 1Nov19	
Inv.35	1 - KITCHEN: DELETE STANDARD BACKSPLASH THAT WAS GIVING IN BONUS PACKAGE. PUCHASER UNDERSTANDS THAT THERE IS NO CASH VALUE
21	Note:
Line 504	
30Oct19 / 1Nov19	

ELECTRICAL

Inv.15	1 - TELEPHONE AND CABLE LOCATION SKETCH. LOCATIONS MAY VARY SLIGHTLY DUE TO JOIST LOCATIONS
1	Note:
Line 126	
11Jul19 / 23Aug19	
Inv.15	1 - KITCHEN: INSTALL RECEPTACLES - ADDITIONAL 15 AMP 120 VOLT RECEPTABLE- FOR GAS STOVE
4	Note:
Line 129	
11Jul19 / 23Aug19	

North Oakville - 113 - 1 - WILLOW VALLEY (43-02) ELEV C

Registere Plan Number: Municipal Address: Closing: **9-Jul-20**

Inv.15 9	1 - LIVING ROOM: INSTALL CEILING LIGHT ROUGH IN - FOR 1 CEILING LIGHT - ON SEPARATE SWITCH (DOES NOT INCLUDE FIXTURE). LOCATIONS MAY VARY SLIGHTLY DUE TO JOIST LOCATIONS
Line 134	Note:
11Jul19 / 23Aug19	
Inv.15 10	1 - KITCHEN: INSTALL CEILING FIXTURE - RELOCATE STANDARD CEILING FIXTURE ABOVE KITCHEN ISLAND. LOCATIONS MAY VARY SLIGHTLY DUE TO JOIST LOCATIONS
Line 135	Note:
11Jul19 / 23Aug19	
Inv.15 7	1 - GREAT ROOM: INSTALL RECEPTACLES - DEDICATED 15 AMP 120 VOLT RECEPTABLE ABOVE FIREPLACE
Line 132	Note:
11Jul19 / 23Aug19	

HARDWOOD FLOORING

Inv.35 22	1 - GREAT ROOM: INSTALL LEVEL 2 HARDWOOD THROUGHOUT GREAT ROOM
Line 505	Note:
30Oct19 / 1Nov19	
Inv.35 23	1 - LIVING / DINING ROOM: INSTALL LEVEL 2 HARDWOOD THROUGHOUT LIVING/DINING ROOM
Line 506	Note:
30Oct19 / 1Nov19	
Inv.35 24	1 - MAIN HALL: INSTALL LEVEL 2 HARDWOOD THROUGHOUT MAIN HALL
Line 507	Note:
30Oct19 / 1Nov19	
Inv.35 25	1 - LIBRARY: INSTALL LEVEL 2 HARDWOOD THROUGHOUT LIBRARY
Line 508	Note:
30Oct19 / 1Nov19	
Inv.35 26	1 - STAIRCASES: INSTALL SANDED OAK LANDINGS ON STAIRCASES
Line 509	Note:
30Oct19 / 1Nov19	

HVAC

Inv.15 3	1 - KITCHEN: INSTALL GAS PIPING AND OTHER - GAS LINE R/I FOR MAIN FLOOR - STOVE - UP TO 3/4 INCH LINE
Line 128	Note:
11Jul19 / 23Aug19	

MISCELLANEOUS

Inv.35 28	1 - BONUS PACKAGE: WORTH OF UPGRADES FROM VALERYHOMES DECOR CENTRE IS BEING APPLIED TOWARD THE COLOUR APPOINTMENT
Line 511	Note:
30Oct19 / 1Nov19	
Inv.35 29	1 - Purchaser has attended a Colour appointment at the Decor Centre & has DECLINED any additional upgrades and accepts and acknowledges that there will be no further structural changes/additions/deletions to be made upon signing on October 30, 2019
Line 512	Note:
30Oct19 / 1Nov19	

North Oakville - 113 - 1 - WILLOW VALLEY (43-02) ELEV C

Registere Plan Number: Municipal Address: Closing: **9-Jul-20**

Inv.35	30	Line 513	30Oct19 / 1Nov19	<p>1 - Purchasers are aware & accepts that ANY changes made to upgrades after signing this Purchasers Extra Form are subject to a minimum administration fee</p> <p>Note:</p>
Inv.15	11	Line 137	11Jul19 / 23Aug19	<p>1 - Purchaser has attended a Structural appointment at the Decor Centre & has DECLINED any additional upgrades and accepts and acknowledges that there will be no further structural changes/additions/deletions to be made upon signing on July 11, 2019</p> <p>Note:</p>
Inv.15	12	Line 138	11Jul19 / 23Aug19	<p>1 - Purchasers are aware & accepts that ANY changes made to upgrades after signing this Purchasers Extra Form are subject to a minimum administration fee</p> <p>Note:</p>

PAINT

Inv.35	27			<p>1 - STAIRCASES: STAIN STAIRCASES TO GREY KARMA.</p> <p>Note: PURCHASER IS AWARE THAT THE STAIN ON THE RED OAK STAIRS CAN NEVER BE AN EXACT MATCH THE THE WHITE OAK FLOORS THEY SELECTED</p>
30Oct19 / 1Nov19				

PLUMBING

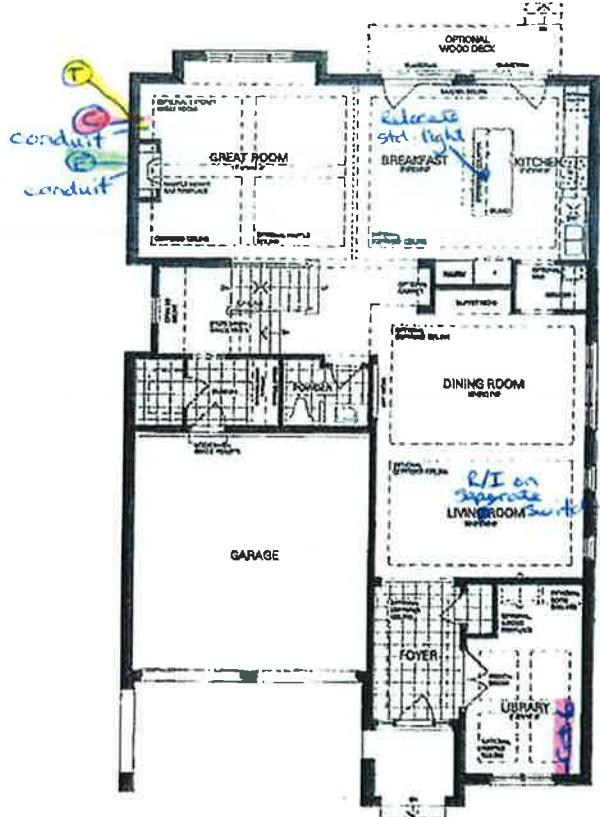
Inv.15	2			<p>1 - KITCHEN: RELOCATE SINK AND DISHWASHER FROM THE ISLAND, TO THE BACK WALL OF KITCHEN, BESIDE STOVE. SEE SKETCH</p> <p style="text-align: center;">**PURCHASER WAS ADVISED AGAINST THIS OPTION**</p> <p>Note:</p>
11Jul19 / 23Aug19				
Inv.15	8	Line 133	11Jul19 / 23Aug19	<p>1 - KITCHEN: INSTALL EXTRA ROUGH-IN LINE FOR FRIDGE ICE MAKER WITH SHUT-OFF</p> <p>Note:</p>

VACCUM/BELL

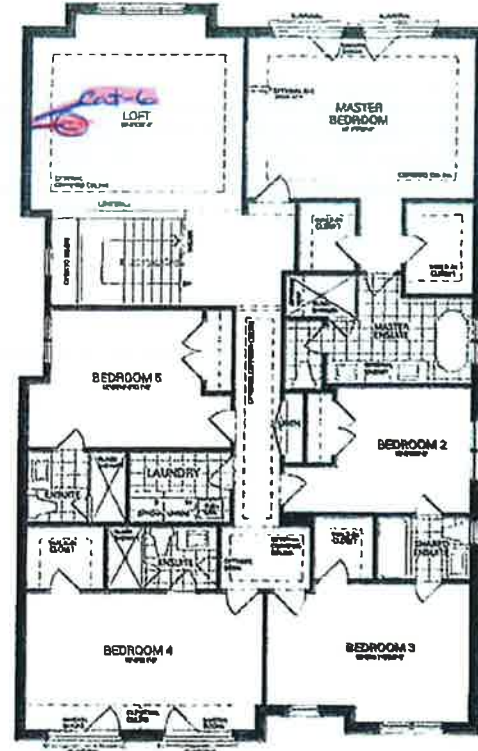
Inv.15	5	Line 130	11Jul19 / 23Aug19	<p>1 - WIRELESS ACCESS POINT PACKAGE - 2-CAT6 NETWORK CABLES AND 2-UBIQUITI AC LITE ACCESS POINTS</p> <p>Note:</p>
11Jul19 / 23Aug19				
Inv.15	6	Line 131	11Jul19 / 23Aug19	<p>1 - GREAT ROOM: INSTALL CONDUIT - 1 1/4" ORANGE FLEX CONDUIT APPROX. 35FT FOR FIREPLACE</p> <p>Note:</p>

- T - Telephone
- C - cable
- E - electrical
- cat-6

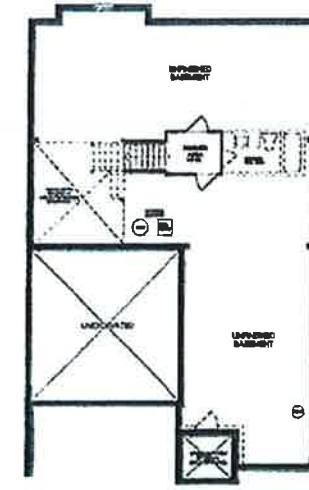
Lot 113
AP BP
 July 11, 2019



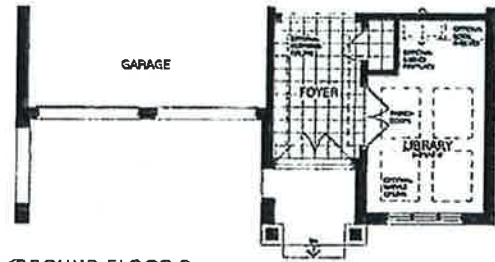
GROUND FLOOR A



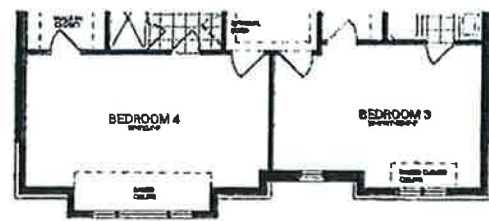
SECOND FLOOR A



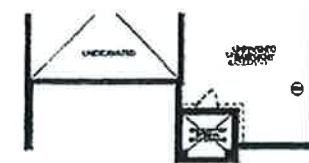
BASEMENT A



GROUND FLOOR B



SECOND FLOOR B



BASEMENT B

Lot # 113.
 EIV. C.

Willow Valley

Elevation A
 3,623 Sq.ft.

Includes 47 Sq.ft. of Finished Basement

Elevation B
 3,628 Sq.ft.

Includes 47 Sq.ft. of Finished Basement

Disclaimer: All dimensions are approximate and subject to normal construction variances. Dimensions may exceed the useable floor area. Sizes and specifications subject to change without notice. Furniture is displayed for illustration purposes only and does not necessarily reflect the electrical plan for the suite. Suites are sold unfurnished. Balcony and facade variations may apply, contact a sales representative for further details. E&O.E. ©Valery Homes 2018. All rights reserved.



NX58H9500WS

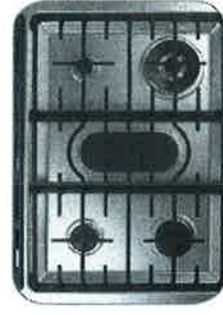
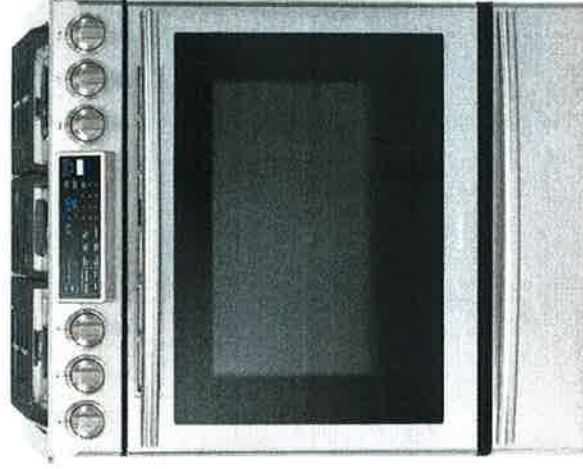
BA AA
Lot 113

5.8 cu. ft. Slide-in Gas Range with Intuitive Controls

X

Features

- Slide-in Design
- 5 Gas Burners
 - Right Front: Dual 18K BTU
 - Left Front: 15K BTU
 - Right Rear: 5K BTU
 - Left Rear: 9.5K BTU
 - Center: 9.5K BTU (Oval)
- Large Oven Capacity -- 5.8 cu. ft.
- Guiding Light Controls
- Cast Iron 3 Piece Grates
- Reversible Cast Iron Griddle
- Wok Grate
- True Convection Oven (3-Fan)
- Temperature Probe
- Warming Drawer (3 Levels)
- Grate Indicator Marks
- Healthy Cook Options



Power/Flexible Cooktop



Guiding Light Controls



Cast Iron Reversible Griddle

Convenience

- Auto Oven Light
- Sabbath Mode
- Delay Start
- Auto Shut-Off Option
- Child Safety Lock
- Self Clean
- 3 Favorite Cook Presets
- 4 Healthy Cook Presets
- 3 Chrome Oven Racks, including 1 Split Rack

Available Color



Stainless Steel

Signature Features

POWERFUL/FLEXIBLE COOKTOP

- True dual-power burner allows for even heat distribution and reduced cooking time, plus the convenience of a large oval burner

GUIDING-LIGHT CONTROLS

- Intuitive controls offer simple, step-by-step instructions for choosing cooking options
- Only illuminates cooking options that are able to be selected and goes from left to right eliminating back and forth.
- Control temperature and time settings, select cooking functions and program your favorite recipes.

TRUE CONVECTION

- Heated fan system is great for baking and broiling because temperature is distributed thoroughly and food cooks evenly.

REVERSIBLE CAST IRON GRIDDLE

- Reversible griddle provides the flexibility of cooking on flat or grilled surface, while the Cast Iron provides even cooking.

GRATE INDICATOR MARKS

- Indicator marks located on the grates allow cookware to be ideally placed for precise cooking.



Ranked "Highest in Customer Satisfaction with Ranges, Cooktops and Ovens."*

- J.D. Power

SAMSUNG

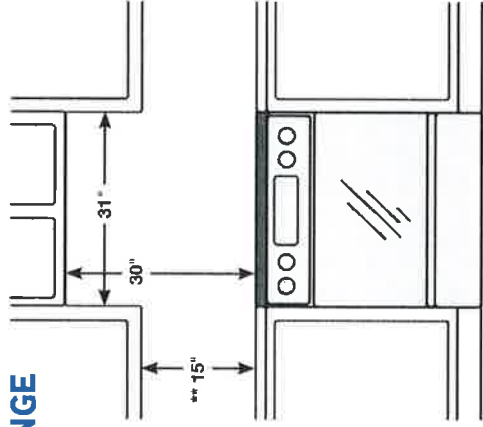
NX58H9500WS

5.8 cu. ft. Slide-in Gas Range with Intuitive Controls

Lot 113

INSTALLING YOUR RANGE

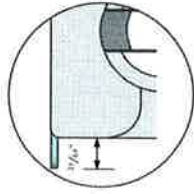
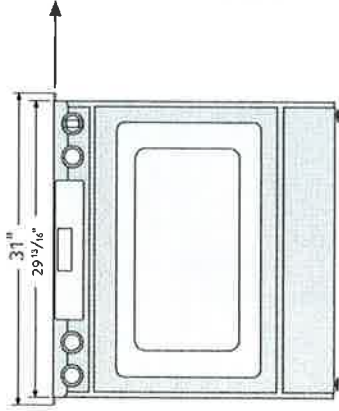
30" minimum clearance between the top of the cooking surface and the bottom of an unprotected wood or metal cabinet; or 24" minimum when the bottom of the wood or metal cabinet is protected by not less than 1/4" flame retardant millboard covered with not less than no.28 MSG sheet steel, 0.015" stainless steel, 0.024" aluminum or 0.020" copper.



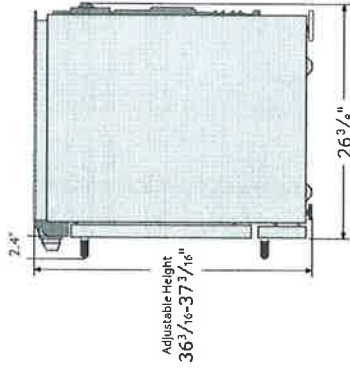
** 18" minimum between the countertop and the adjacent cabinet bottom.

IMPORTANT: To eliminate the risk of burns or fire caused by reaching over heated surface units, cabinet storage space located above the surface units should be avoided. If cabinet storage is to be provided, the risk can be reduced by installing a range hood that projects horizontally a minimum of 5" beyond the bottom of the cabinets.

Dimensions



Glass cooktop overlaps and sits on top of your kitchen countertop to give a built-in look. Cut out space for the range is 29¹³/₁₆".



Total Power (BTU)
57,000 BTU

Power Source
120 V/60 Hz

Black Enamel 5 Burner Cooktop

- Right Front: 18000 BTU – Dual
- Left Front: 15000 BTU
- Right Rear: 5000 BTU
- Left Rear: 9500 BTU
- Center Rear: 9500 BTU – Oval

Oven

- Bake: 150°F - 550°F
- Convection Bake: 150°F - 550°F
- Bake Burner: 18000 BTU
- Broil Burner: 16000 BTU
- Variable Broil: Low/Hi (375°F - 480°F)
- Convection Roast: 150°F - 550°F
- Sabbath Mode

Warming Drawer

- Capacity: 0.7 cu. ft.
- Heating Performance: 600 W
- Temperature Settings: 3 Level

Warranty

- One (1) Year All Parts and Labor
- Five (5) Years Gas Cooktop

Product Dimensions & Weight (WxHxD)

Actual Oven Dimensions:
25" x 21¹/₈" x 19"

Outside Dimensions:
29¹³/₁₆" x 36³/₁₆-37³/₁₆" (Adjustable) x 26³/₈"

Weight: 202 lbs.

Shipping Dimensions & Weight (WxHxD)

Dimensions:
32⁷/₈" x 43¹¹/₁₆" x 30¹/₈"

Weight: 225 lbs.

Color Stainless Steel **Model #** NX58H9500WS **UPC Code** 887276032047

SAMSUNG

*Samsung received the highest numerical score for ranges, cooktops and ovens in the proprietary i.D. Power 2014 Kitchen Appliances Study.™ Study based on 15,380 total responses measuring 17 ranges, cooktops and oven brands and measures opinions of consumers about their appliances purchased in the past 12 months. Proprietary study results are based on experiences and perceptions of consumers surveyed in January-March 2014. Your experiences may vary. Visit samsung.com.

Actual color may vary. Design, specifications, and color availability are subject to change without notice.

Non-metric weights and measurements are approximate.

©2014 Samsung Electronics America, Inc. 85 Challenger Road, Ridgefield Park, NJ 07660. Tel: 800-SAMSUNG. samsung.com. Samsung is a registered trademark of Samsung Electronics Co., Ltd.

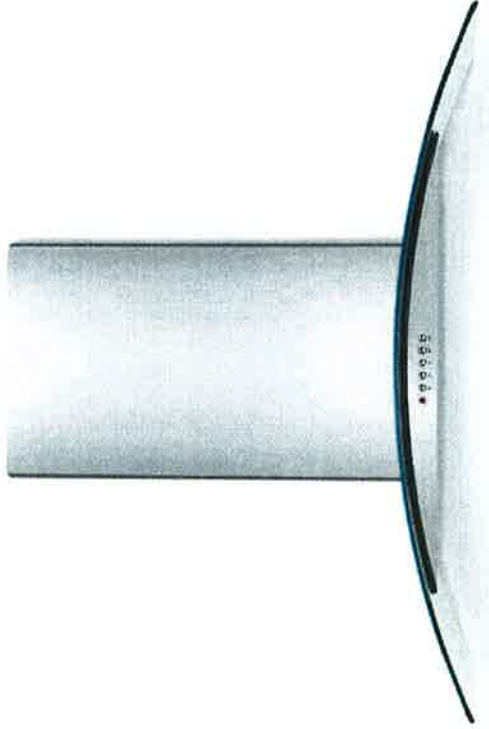
FRIGIDAIRE

Lot 113
BA AH

Glass Canopy Wall-Mount Hood

FHWC3060L S

30" Stainless Steel



Signature Features



Glass Canopy Design

Glass and stainless steel construction is as attractive as it is functional.



Centrifugal Fan

Move air quietly and efficiently — up to 400 cu. ft. of air per minute.



Washable Filters

Dishwasher-safe for easy cleaning. The aluminum filter provides strength and durability not found in foam filters.



Halogen Lighting

For bright illumination of the cooktop surface.

Features

Nominal Width	30"
Installation Type	Wall Mount
Style	Stainless Steel/ Glass Canopy
Air Discharge	Vertical
Air Delivery (CFM)	400
Blower Type	Centrifugal
Controls	Electronic Push Button
Fan Speeds	3
Sound Level (dBA)	67.1
Dual Halogen Lights	Yes
Dishwasher-Safe Filter	Yes
Exhaust Duct	Convertible*
Duct Required	6" Round

Optional Accessories

Duct-Free Kit	PN# FHWPKT60LS
10' Flue Extension Kit	PN# FHWDX60LS

Specifications

Product Dimensions -

Height (With One Cover) (With Flue Extension)	22-11/16" min. 26-1/2" min. 43-29/32" max
Width	29-7/8"
Depth	19-11/16"
Voltage Rating	120V / 60Hz / 15A
Amps @ 120 Volts	4.0
Connected Load (kW Rating) @ 120 Volts †	0.516
Shipping Weight (Approx.)	50 Lbs.
Sones Rating	6.5

*Ventilation is convertible to be either ducted outside or recirculated inside requiring no ducting. (Recirculated option requires use of optional Duct-Free Kit.)

† For use on adequately wired 120V, dedicated circuit having 2-wire service with a separate ground wire. Appliance must be grounded for safe operation.

NOTE: Always consult local and national electric codes. Check local building codes for installation requirements, as they may vary per locale. Refer to Product Installation Guide for detailed installation instructions on the web at frigidaire.com.

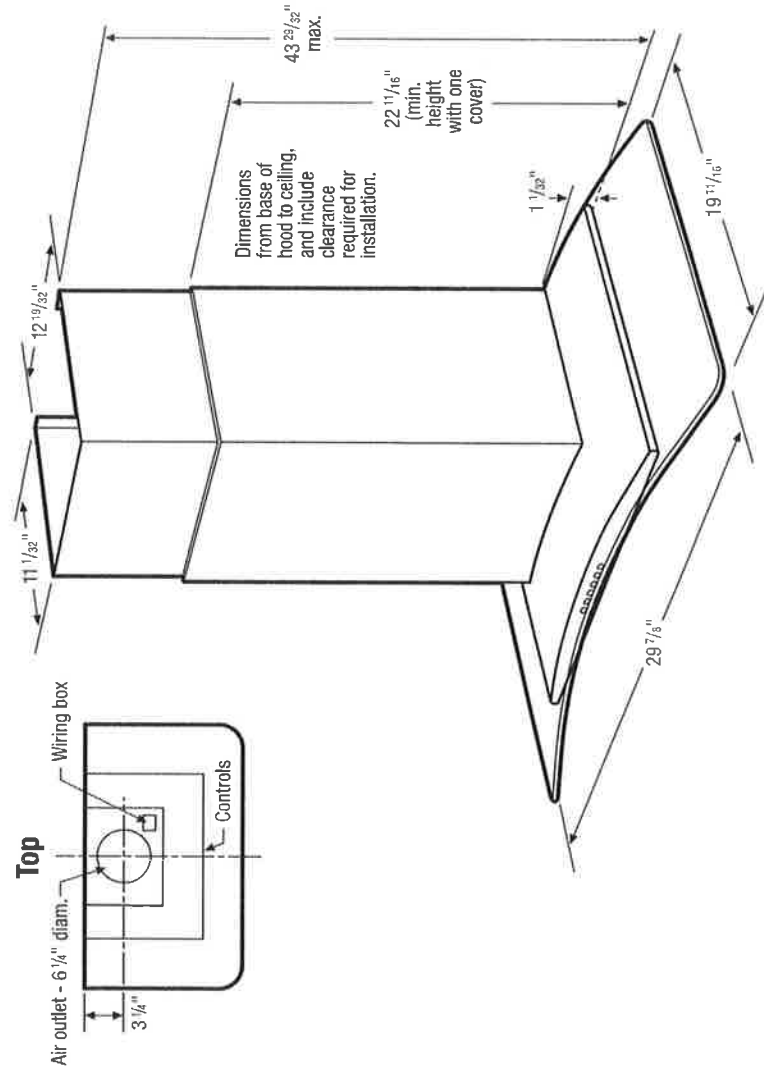
Specifications subject to change.

Available in:



Stainless
(S)

frigidaire.com



Glass Canopy Wall-Mount Hood Specifications

- Product Shipping Weight (approx.) - 50 Lbs.
- Wall-Mount Installation
- Ventilation system is preset to exhaust air outside. If outside ducting is not possible, optional Duct-Free Recirculation Kit (PN # FHWKRKT60LS) is available to convert ventilation to allow air to recirculate inside. (Refer to *Ducted Option Specifications for outside ventilation*.)
- Sones Rating - 6.5
- Voltage Rating - 120V / 60 Hz / 15 Amps
- Connected Load (kW Rating) @ 120 Volts = 0.516 kW (For use on adequately wired 120V, dedicated circuit having 2-wire service with a separate ground wire. Appliance must be grounded for safe operation.)
- Amps @ 120 Volts = 4 Amps
- Always consult local and national electric codes. Check local building codes for installation requirements, as they may vary per locale.
- Minimum installation height allowed from bottom of hood to standard 36"-high electric or gas cooking surface is 26" - 35", (NOT more than 32" recommended.) For detailed instructions regarding install heights in 8', 9' and 10' ceiling applications, refer to installation guide on web.
- To prepare mounting surface, adequate structure and support must be provided, capable of supporting 100 lbs.

Ducted Option Specifications

- For outside ventilation.
- Exhaust Duct Required - 6" round
- For most efficient airflow exhaust, use a straight run or as few elbows as possible.
- Use metallic flex ducting only to connect rigid duct directly to transitions (if allowed by code).
- Thermal breaks such as short section of nonmetallic duct, should be used in areas of extreme cold.
- Cold weather installations should have additional backdraft damper installed.
- Refer to installation instructions on web for detailed exhaust duct preparation and converting vent blower system for recirculating inside.

Note: For planning purposes only. Refer to *Product Installation Guide on the web at frigidaire.com* for detailed instructions.

Optional Accessories

- Duct-Free Recirculation Kit - (PN # FHWKRKT60LS).
- 10' Flue Extension Kit - (PN # FHWTOX60LS)

FRIGIDAIRE

USA • 10200 David Taylor Drive • Charlotte, NC 28262 • 1-800-FRIGIDAIRE • frigidaire.com
 CANADA • 5855 Terry Fox Way • Mississauga, ON L5V 3E4 • 1-800-265-8352 • frigidaire.ca

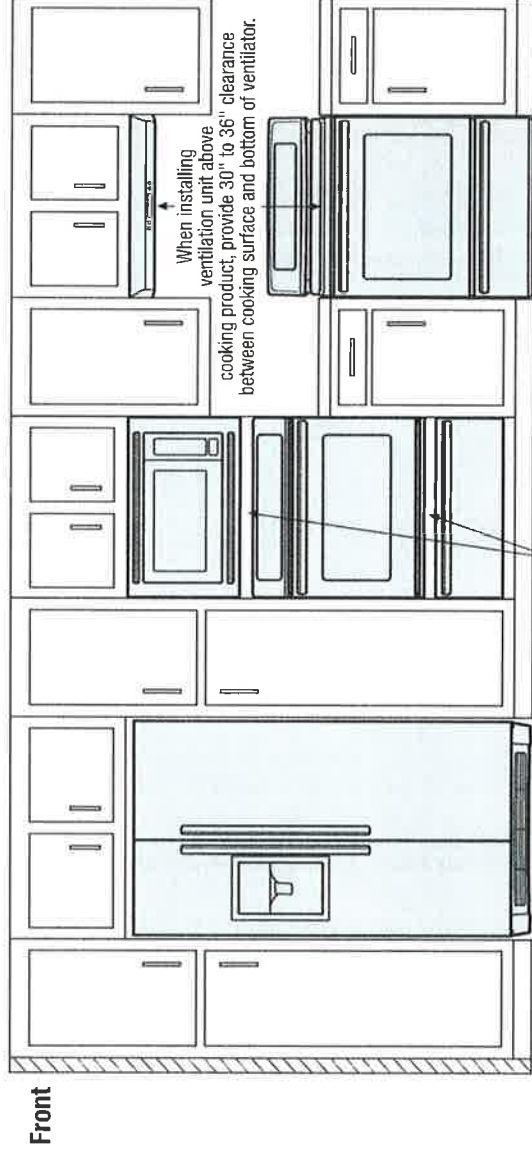
FHWG3060L 02/12

Accessories information available
 on the web at frigidaire.com

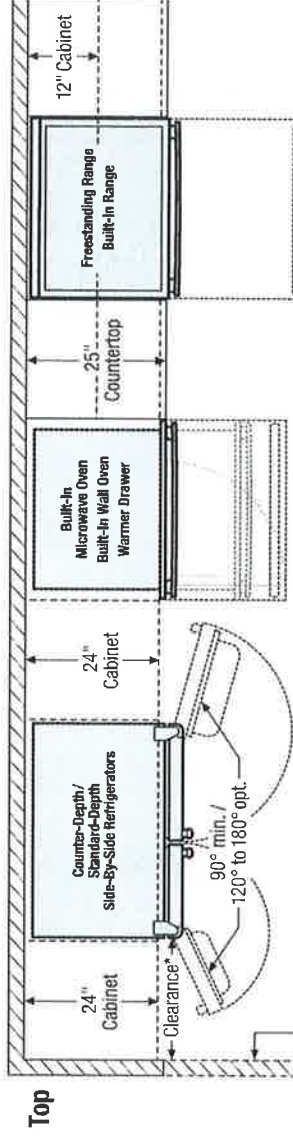


Specifications
 subject to change

Use these dimensions and clearance instructions for planning purposes only. For detailed installation instructions, refer to installation guide, packed with product, or on the web at frigidaire.com.



Clearance information for cooking appliances, provided in specific products' installation guide.



*When installing side-by-side refrigerator adjacent to wall, cabinet or another appliance that extends beyond front edge of unit, 20" minimum clearance recommended to allow for optimum 120° to 180° door swing, providing complete drawer/crisper access and removal. (Absolute 4-1/2" minimum clearance will ONLY allow for 90° door swing which will provide limited drawer/crisper access with restricted removal.)

When installing appliance with sliding drawer, swinging or drop-down door directly across from obstructions, provide sufficient clearance for drawer extension or door swings.

