

CONSTRUCTION SUMMARY

North Oakville - 151 - 1 - GLEN DALE (36-02) ELEV B

Registere Plan Number: Municipal Address: Closing: **27-Aug-20**

BROCHURE LAYOUTS

| | |
|-------------------|--|
| Inv.5 | 1 - GREAT ROOM: TRIM OPENING BETWEEN GRAT ROOM AND DINING ROOM |
| 7 | |
| Line 109 | Note: |
| 24Jun19 / 26Aug19 | |

ELECTRICAL

| | |
|-------------------|---|
| Inv.5 | 1 - GREAT ROOM: BELL AND CABLE LOCATION SKETCH |
| 1 | |
| Line 20 | Note: |
| 24Jun19 / 26Aug19 | |
| Inv.5 | 1 - GREAT ROOM/DINING ROOM: INSTALL OPTIONAL OPENING BETWEEN GREAT ROOM |
| 6 | AND DINING ROOM |
| Line 25 | OPENING TO BE 8' WIDE X 6' HIGH. 4' ABOVE FINISHED FLOOR |
| | Note: |
| 24Jun19 / 26Aug19 | |

ELECTRICAL

| | |
|-------------------|---|
| Inv.5 | 1 - EXTERIOR: INSTALL 4 CHANNEL CAMERA ROUGH-IN LOCATIONS- ROUGH-IN ONLY- |
| 19 | ALL WIRES TO COME TO LIBRARY. SEE SKETCH FOR LOCATIONS |
| Line 92 | Note: LOCATIONS MAY VARY SLIGHTLY |
| 24Jun19 / 26Aug19 | |
| Inv.5 | 1 - MASTER ENSUITE: INSTALL CEILING LIGHT ROUGH IN - FOR 1 CEILING LIGHT - ON |
| 12 | SEPARATE SWITCH (DOES NOT INCLUDE FIXTURE)- ABOVE TUB |
| Line 84 | Note: LOCATIONS MAY VARY SLIGHTLY DUE TO JOIST LOCATIONS |
| 24Jun19 / 26Aug19 | |
| Inv.5 | 1 - BED 2/3 SHARED BATH: INSTALL POT LIGHT - 4" LED - SHOWER CEILINGS IN BATH TUB |
| 13 | CEILING |
| Line 85 | Note: LOCATIONS MAY VARY SLIGHTLY DUE TO JOIST LOCATIONS |
| 24Jun19 / 26Aug19 | |
| Inv.5 | 4 - ALL WASHROOMS: INSTALL RECEPTACLES - DEDICATED 15 AMP 120 VOLT GFCI |
| 20 | RECEPTABLE (INTERIOR) |
| | TO GO BESIDE TOILETS, 8" OFF FINISHED FLOOR. SEE SKETCH |
| 24Jun19 / 26Aug19 | |
| Line 93 | POWDER, MASTER, SHARED AND BED 4 |
| | Note: |
| 24Jun19 / 26Aug19 | |
| Inv.5 | 2 - TIMER - TIMER FOR INTERIOR AND EXTERIOR LIGHTING- TWO (2) FOR EACH SET OF |
| 21 | COACH LIGHTS |
| Line 94 | Note: |
| 24Jun19 / 26Aug19 | |
| Inv.5 | 1 - EXTERIOR: INSTALL TIMER - TIMER FOR INTERIOR AND EXTERIOR LIGHTING- TO |
| 22 | CONTROL POT LIGHTS IN SOFFIT |
| Line 95 | Note: |
| 24Jun19 / 26Aug19 | |
| Inv.5 | 1 - KITCHEN: MOVE CEILING FIXTURE - RELOCATE STANDARD CEILING FIXTURE- TO GO |
| 14 | ABOVE KITCHEN ISLAND |
| Line 86 | Note: LOCATIONS MAY VARY SLIGHTLY DUE TO JOIST LOCATIONS |
| 24Jun19 / 26Aug19 | |



North Oakville - 151 - 1 - GLEN DALE (36-02) ELEV B

Register Plan Number: Municipal Address: Closing: 27-Aug-20

| | |
|-------------------------|--|
| Inv.5 15 Line 87 | 3 - KITCHEN: INSTALL THREE (3) POT LIGHT - 4" LED NON-INSULATED CEILINGS, ON SEPERATE SWITCH Note: LOCATIONS MAY VARY SLIGHTLY DUE TO JOIST LOCATIONS |
| 24Jun19 / 26Aug19 | |
| Inv.5 16 Line 88 | 4 - GREAT ROOM: INSTALL FOUR (4) POT LIGHT - 4" LED NON-INSULATED CEILINGS, ON SEPERATE SWITCH Note: LOCATIONS MAY VARY SLIGHTLY DUE TO JOIST LOCATIONS |
| 24Jun19 / 26Aug19 | |
| Inv.5 17 Line 89 | 6 - SOFFIT: INSTALL SIX (6) POT LIGHT - 4" LED - EXTERIOR SOFFITS |
| 24Jun19 / 26Aug19 | |
| Inv.5 2 Line 21 | 1 - GREAT ROOM: INSTALL Receptacles - Dedicated 15 amp 120 volt receptable ABOVE FIREPLACE FOR FUTURE TV Note: |
| 24Jun19 / 26Aug19 | |
| Inv.5 28 Line 102 | 1 - KITCHEN: INSTALL CABINET LIGHTING - UNDERMOUNT T-5 LED VALANCE LIGHT (\$200 PER LIGHT) Note: |
| 24Jun19 / 26Aug19 | |
| Inv.5 29 Line 103 | 1 - KITCHEN: INSTALL VALANCE LIGHTING - UNDER CABINET - DOES NOT INCLUDE LIGHTING Note: |
| 24Jun19 / 26Aug19 | |
| Inv.5 10 Line 82 | 1 - KITCHEN: INSTALL RECEPTACLES - ADDITIONAL 15 AMP 120 VOLT RECEPTABLE FOR GAS STOVE Note: |
| 24Jun19 / 26Aug19 | |

HVAC

| | |
|-------------------------|--|
| Inv.5 11 Line 83 | 1 - KITCHEN: INSTALL GAS PIPING AND OTHER - GAS LINE R/I FOR MAIN FLOOR - STOVE - UP TO 3/4 INCH LINE Note: |
| 24Jun19 / 26Aug19 | |
| Inv.5 30 Line 106 | 1 - FILTRATION - HUMIDIFICATION - CONTROL - HEPA 60 Note: |
| 24Jun19 / 26Aug19 | |
| Inv.5 31 Line 107 | 1 - FILTRATION - HUMIDIFICATION - CONTROL - FLO - THRU HUMIDIFIER LARGE HE205 - 18 GAL Note: |
| 24Jun19 / 26Aug19 | |
| Inv.5 33 Line 112 | 1 - LAUNDRY ROOM: INSTALL GAS PIPING AND OTHER - GAS LINE R/I FOR 2ND FLOOR - UP TO 3/4 INCH LINE Note: |
| 24Jun19 / 26Aug19 | |
| Inv.5 32 Line 108 | 1 - EXTERIOR: INSTALL GAS PIPING AND OTHER - GAS LINE R/I FOR BBQ - UP TO 3/4 INCH LINE Note: |
| 24Jun19 / 26Aug19 | |

INTERIOR DOORS & TRIM



North Oakville - 151 - 1 - GLEN DALE (36-02) ELEV B

Registere Plan Number: Municipal Address: Closing: 27-Aug-20

| | |
|------------------------|---|
| Inv.5 23 Line 96 | 2 - LIBRARY: REPLACE STD DOORS IN LIBRARY - INTERIOR DOOR & TRIM - ADD TWO (2) FRENCH DOORS Note: |
| 24Jun19 / 26Aug19 | |

PLUMBING

| | |
|-------------------------|--|
| Inv.5 8 Line 26 | 1 - Extra rough-in line for fridge ice maker with shut-off Note: |
| 24Jun19 / 26Aug19 | |
| Inv.5 9 Line 27 | 1 - Backflow preventer Valve Note: |
| 24Jun19 / 26Aug19 | |
| Inv.5 34 Line 113 | 1 - BASEMENT: RELOCATE ROUGH-IN WASHROOM IN THE BASEMENT. SEE SKETCH FOR LOCATION Note: |
| 24Jun19 / 26Aug19 | |

VACCUM/BELL

| | |
|-------------------------|--|
| Inv.5 26 Line 99 | 1 - MASTER BEDROOM: INSTALL INTERNET - CAT-6 NETWORK CABLE Note: |
| 24Jun19 / 26Aug19 | |
| Inv.5 27 Line 100 | 1 - BED #4: INSTALL INTERNET - CAT-6 NETWORK CABLE Note: |
| 24Jun19 / 26Aug19 | |
| Inv.5 3 Line 22 | 1 - GREAT ROOM: INSTALL Conduit - 1 1/4" Orange Flex Conduit Approx. 35ft for fireplace FOR FUTURE TV Note: |
| 24Jun19 / 26Aug19 | |
| Inv.5 4 Line 23 | 1 - Central Vacuum - Central Vac Piping complete to garage - one outlet in basement Note: |
| 24Jun19 / 26Aug19 | |
| Inv.5 5 Line 24 | 1 - Central Vacuum - Central VAC Kickplate Note: |
| 24Jun19 / 26Aug19 | |
| Inv.5 24 Line 97 | 1 - LIBRARY: INSTALL INTERNET - CAT-6 NETWORK CABLE Note: |
| 24Jun19 / 26Aug19 | |
| Inv.5 25 Line 98 | 1 - GREAT ROOM: INSTALL INTERNET - CAT-6 NETWORK CABLE Note: |
| 24Jun19 / 26Aug19 | |

CONSTRUCTION SUMMARY

North Oakville - 151 - 1 - GLEN DALE (36-02) ELEV B

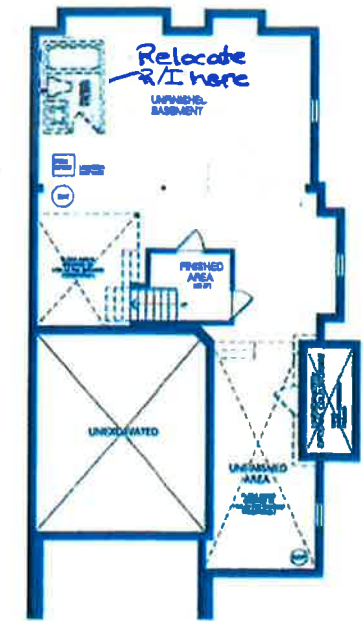
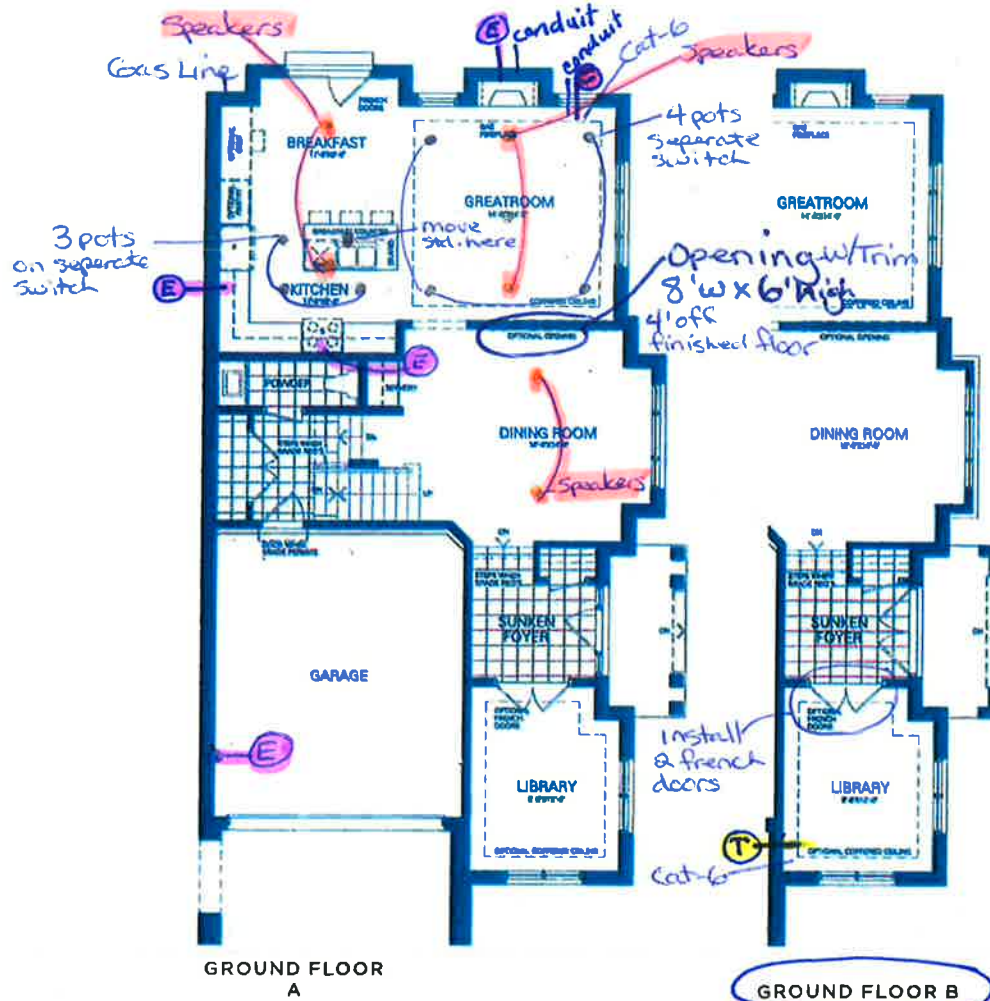
Registere Plan Number: Municipal Address: Closing: 27-Aug-20

| | |
|-------------------|--|
| Line 5 | 1 - SURROUND SOUND - SIX (6) ZONE HOME AUDIO ROUGH-IN SPEAKER WIRES (X12), |
| 18 | CAT-5E CABLES (X2), 6.5 INCH SPEAKER BRACKETS (X6 PAIRS) |
| Line 90 | TO GO IN: KITCHEN, GREAT ROOM, DINING ROOM, MASTER BEDROOM AND UPPER HALL |
| | Note: LOCATIONS MAY VARY SLIGHTLY DUE TO JOIST LOCATIONS |
| 24Jun19 / 26Aug19 | |

Lot 151
July 3, 2019

AA

- Speakers
- ⓔ — Electrical
- Ⓢ — Cable (RG-6)
- Ⓣ — Telephone



Glen Dale

Elevation A

2,652 Sq.ft.

Includes 50 Sq.ft. of Finished Basement

Elevation B

2,652 Sq.ft.

Includes 50 Sq.ft. of Finished Basement

Disclaimer: All dimensions are approximate and subject to normal construction variances. Dimensions may exceed the useable floor area. Sizes and specifications subject to change without notice. Furniture is displayed for illustration purposes only and does not necessarily reflect the electrical plan for the suite. Suites are sold unfurnished. Balcony and facade variations may apply, contact a sales representative for further details. E&O.E. ©Valery Homes 2018. All rights reserved.

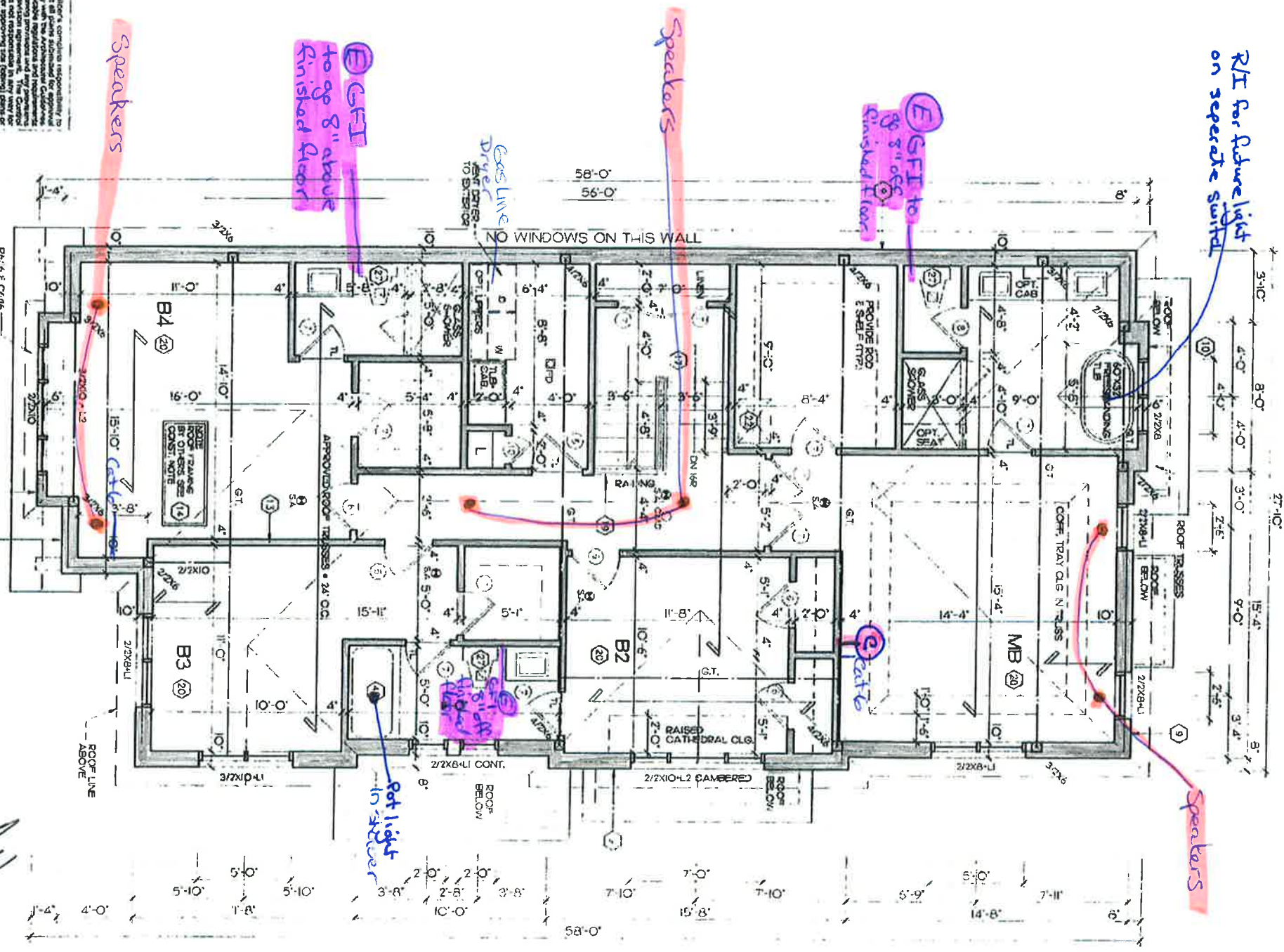
July 3, 2019

- Speakers
- Electrical
- Cable

LOT #151

AA

R/I for future light on separate switch



OPT. SECOND FLOOR
THREE BATHROOM LAYOUT - ELEV. A SHOWN

AA

It is the builder's complete responsibility to ensure that all plans submitted for approval are in accordance with the applicable building code and all applicable regulations and codes. The builder is responsible for obtaining all necessary permits and for ensuring that all work is done in accordance with the applicable building code and all applicable regulations and codes. The builder is responsible for ensuring that all work is done in accordance with the applicable building code and all applicable regulations and codes. The builder is responsible for ensuring that all work is done in accordance with the applicable building code and all applicable regulations and codes.

NOTE: SEE ELEV. A FOR SECOND FLOOR ROOFS

OAKVILLE - ONTARIO

DESIGNED BY: J. ANDERSON
DRAWN BY: J. ANDERSON
CHECKED BY: J. ANDERSON
DATE: OCT. 2018

OPTIONAL SECOND FLOOR PLAN ELEVATION A SHOWN

SCALE: 3/16" = 1'-0"

DATE: OCT. 2018

PROJECT NO. 1715

DRAWING NO. A8

ANDERSON ASSOCIATES INC.

Lot 151
July 3, 19

AA

HOMES

- 6 Exterior Pots in soffit.
- Camera Rough-in locations - 4th to go in backyard. All wiring to library

Elevation B
2,652 Sq.ft.

Includes 50 Sq.ft. of Finished Basement



Interest-Based Ads

Best Buy For Business

Order Status

Français

Lot 151



Search Best Buy



Stores

Cart

Shop

Brands

Deals

Services

Home > Appliances > Major Appliances > Refrigerators & Freezers > Refrigerators > French Door Refrigerators

Samsung Family Hub 36" 22 Cu. Ft. 4-Door French Door Refrigerator with Ice & Water Dispenser - Black

(0) Write a Review > Model Number: RF22M9S81SG Web Code: 10736342



4 of 6

Feedback



AtA

lot 151

| | | |
|-------------------|---------------------------|--|
| Refrigerator Type | French Door Refrigerators | |
| Installation Type | Free-Standing | |
| Door | Pull-Out | |
| Reversible Doors | No | |
| Colour Family | Black Stainless Steel | |
| Colour | Black Stainless Steel | |

Dimensions

| | | |
|----------------------------------|------------|--|
| Fresh Food Capacity (Cu.Ft.) | 13.2 cu ft | <div>Best Buy Showcase</div> <div>Samsung Family Hub Overview</div> <div>Read More</div> |
| Width (Inches) | 35.75 in | |
| Height (Inches) | 71.85 in | |
| Depth (Inches) | 28.86 in | |
| Width | 97.21 cm | |
| Height | 198 cm | |
| Depth | 79.5 cm | |
| Counter Depth | Yes | |
| Weight | 170 kg | |
| Height - With Hinges (Inches) | 71.875 in | |
| Height - Without Hinges (Inches) | 70.75 in | |

Feedback

| | |
|--|------------|
| Depth - With Door Handles (Inches) | 28.875 in |
| Depth - Doors Open 90 Degrees (Inches) | 42.25 in |
| Depth - Without Door Handles (Inches) | 28.875 in |
| Depth - Without Doors (Inches) | 24 in |
| Capacity | |
| Total Capacity (Cu.Ft.) | 22.0 cu ft |
| Freezer Capacity (Cu.Ft.) | 8.8 cu ft |
| ENERGY STAR Qualified | Yes |
| EnerGuide Rating (kWh/Year) | 530 kWh/yr |

Refrigerator

| | |
|---------------------------|------------------|
| Number of Shelves | 5 |
| Adjustable Door Bins | No |
| Fruit & Vegetable Crisper | 2 Clear Standard |
| Water Dispenser | External |
| Ice Dispenser | External |
| Dual Evaporators | Yes |

Freezer

Interest-Based Ads

Best Buy For Business

Order Status

français



range hood



Stores

Cart

Shop

Brands

Deals

Services

Home > Appliances > Major Appliances > Ranges, Cooking & Ventilation > Ranges > Product Details

Samsung 30" 5.8 Cu. Ft. True Convection 5-Burner Slide-In Gas Range - Black Stainless Steel



(1)

[Write a Review](#)

Model Number: **NX58K9500WG**

Web Code: 10406978



2 of 9

Feedback



A.A

| | |
|----------------------------|-----------------------|
| Product Type | Slide-In Gas |
| Dual Range | No |
| Colour | Black Stainless Steel |
| Colour Family | Black Stainless Steel |
| Liquid Propane Convertible | Yes |
| Oven Controls | Guiding Light System |
| Wheels and Legs | 4 Adjustable Legs |



| | |
|-----------------|---------|
| Dimensions | |
| Width (Inches) | 29.9 in |
| Height (Inches) | 36.2 in |
| Depth (Inches) | 26.4 in |
| Width | 75.9 cm |
| Height | 91.9 cm |
| Depth | 67 cm |
| Weight | 91.8 kg |

Feedback

Interest-Based Ads

Best Buy For Business

Order Status
Français



range hood



Stores

Cart

Shop

Brands

Deals

Services

Home > Appliances > Major Appliances > Ranges, Cooking & Ventilation > Range Hoods > Product Details

Samsung 30" Range Hood (NK30K7000WG/AA) - Black Stainless Steel



(1)

Write a Review >

Model Number

NK30K7000WG/AA

Web Code: 10487312



5 of 8



<https://www.bestbuy.ca/en-ca/product/samsung-samsung-30-range-hood-nk30k7000wg-aa-black-stainless-steel-nk30k7000wg-aa/10487312>

Feedback

A.A

| | |
|-----------------------------|-----------------------|
| Colour Family | Black Stainless Steel |
| Material - Cabinet | Stainless Steel |
| Material - Accents | Stainless Steel |
| Type of Venting | External |
| Diameter of Duct (Inches) | 30 Inches |
| Diameter of Duct | 76.2 |
| Airflow (Cubic Feet/Minute) | 600 cu ft/min |
| Minimum Sound Output (dB) | 74.6 dB |
| Number of Fan Speed | 4 |

| | |
|-----------------|----------|
| Dimensions | |
| Width (Inches) | 26.49 in |
| Height (Inches) | 18.03 in |
| Depth (Inches) | 34.25 in |
| Width | 67.28 cm |
| Height | 45.79 cm |
| Depth | 86.99 cm |
| Weight | 25.7 g |

Feedback

Warranty

lot 151



Installation Requirements

Electrical Requirements

IMPORTANT

Observe all governing codes and ordinances.

It is the customer's responsibility:

To contact a qualified electrical installer.

To assure that the electrical installation is adequate and in conformance with National Electrical Code, ANSI/NFPA 70

— latest edition *, or CSA Standards C22.1-94, Canadian

Electrical Code, Part 1 and C22.2 No. 0-M91 - latest edition** and all local codes and ordinances.

If codes permit and a separate ground wire is used, it is recommended that a qualified electrician determine that the ground path is adequate. A copy of the above code standards can be obtained from:

National Fire Protection Association
1 Batterymarch Park
Quincy, MA 02169-7471
CSA International
8501 East Pleasant Valley Road
Cleveland, OH 44131-5575

- A 120 volt, 60 Hz., AC only, 15-amp, fused electrical circuit is required.
- If the house has aluminum wiring, follow the procedure below.
- 1. Connect a section of solid copper wire to the pigtail leads.
- 2. Connect the aluminum wiring to the added section of copper wire using special connectors and/or tools designed and UL listed for joining copper to aluminum.

- Follow the electrical connector manufacturer's recommended procedure. Aluminum/copper connection must conform with local codes and industry accepted wiring practices.
- Wire sizes and connections must conform with the rating of the appliance as specified on the model/serial rating plate. The model/serial plate is located behind the filter on the rear wall of the range hood.
- Wire sizes must conform to the requirements of the National Electrical Code, ANSI/NFPA 70 (latest edition), or CSA Standards C22.1-94, Canadian Electrical Code, Part 1 and C22.2 No. 0-M91 (latest edition and all local codes and ordinances).

Venting Requirements

- Vent system must terminate outdoors.
- Do not terminate the vent system in an attic or other enclosed area.
- Do not use a 4" (10.2 cm) laundry-type wall cap.
- Use metal vent only. Rigid metal vent is recommended. Plastic or metal foil vent is not recommended.
- The length of the vent system and the number of elbows should be kept to a minimum to provide efficient performance.

For the most efficient and quiet operation:

- Use no more than three 90° elbows.
- Make sure there is a minimum of 24" (61 cm) of straight vent between the elbows if more than 1 elbow is used.
- Do not install 2 elbows together.
- Use clamps to seal all joints in the vent system.
- The vent system must have a damper. If the roof or wall cap has a damper, do not use the damper supplied with the range hood.
- Use caulking to seal the exterior wall or roof opening around the cap.
- The size of the vent should be uniform.

Venting Methods

This canopy hood is factory set for venting through the roof or wall. A 6" (15.2 cm) round vent system is needed for installation (not included). The hood exhaust opening is 6" (15.2 cm) round.

NOTE

Flexible vent is not recommended. Flexible vent creates back pressure and air turbulence that greatly reduce performance. The vent system can terminate either through the roof or wall. To vent through a wall, a 90° elbow is needed.

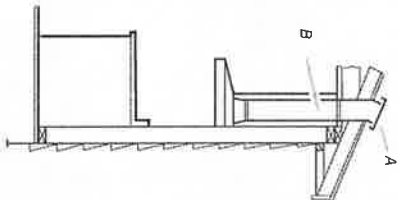
Mounting Height

Select a mounting height between a minimum of 24" (61 cm) for an electric cooking surface, a minimum of 30" (76.2 cm) for a gas cooking surface, and a suggested maximum of 36" (91.4 cm) above the range to the bottom of the hood.

Rear discharge

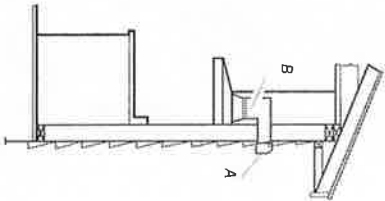
A 90° elbow may be installed immediately above the hood.

Roof Venting



A. Roof cap
B. 6" (15.2 cm) round vent

Wall Venting



A. Wall cap
B. 6" (15.2 cm) round vent

204 151

Installation Requirements

Electrical Requirements

IMPORTANT

Observe all governing codes and ordinances.

It is the customer's responsibility:

To contact a qualified electrical installer.

To assure that the electrical installation is adequate and in conformance with National Electrical Code, ANSI/NFPA 70 — latest edition*, or CSA Standards C22.1-94, Canadian Electrical Code, Part 1 and C22.2 No.0-M91 - latest edition** and all local codes and ordinances.

If codes permit and a separate ground wire is used, it is recommended that a qualified electrician determine that the ground path is adequate. A copy of the above code standards can be obtained from:

National Fire Protection Association
1 Batterymarch Park
Quincy, MA 02169-7471
CSA International
8501 East Pleasant Valley Road
Cleveland, OH 44131-5575

- A 120 volt, 60 Hz., AC only, 15-amp, fused electrical circuit is required.
 - If the house has aluminum wiring, follow the procedure below:
 1. Connect a section of solid copper wire to the pigtail leads.
 2. Connect the aluminum wiring to the added section of copper wire using special connectors and/or tools designed and UL listed for joining copper to aluminum.
 - Follow the electrical connector manufacturer's recommended procedure. Aluminum/copper connection must conform with local codes and industry accepted wiring practices.
 - Wire sizes and connections must conform with the rating of the appliance as specified on the model/serial rating plate. The model/serial plate is located behind the filter on the rear wall of the range hood.
 - Wire sizes must conform to the requirements of the National Electrical Code, ANSI/NFPA 70 (latest edition), or CSA Standards C22.1-94, Canadian Electrical Code, Part 1 and C22.2 No. 0-M91 (latest edition and all local codes and ordinances).
- ### Venting Requirements
- Vent system must terminate outdoors.
 - Do not terminate the vent system in an attic or other enclosed area.
 - Do not use a 4" (10.2 cm) laundry-type wall cap.
 - Use metal vent only. Rigid metal vent is recommended. Plastic or metal foil vent is not recommended.
 - The length of the vent system and the number of elbows should be kept to a minimum to provide efficient performance.

For the most efficient and quiet operation:

- Use no more than three 90° elbows.
- Make sure there is a minimum of 24" (61 cm) of straight vent between the elbows if more than 1 elbow is used.
- Do not install 2 elbows together.
- Use clamps to seal all joints in the vent system.
- The vent system must have a damper. If the roof or wall cap has a damper, do not use the damper supplied with the range hood.
- Use caulking to seal the exterior wall or roof opening around the cap.
- The size of the vent should be uniform.

Venting Methods

This canopy hood is factory set for venting through the roof or wall. A 6" (15.2 cm) round vent system is needed for installation (not included). The hood exhaust opening is 6" (15.2 cm) round.

NOTE

Flexible vent is not recommended. Flexible vent creates back pressure and air turbulence that greatly reduce performance. The vent system can terminate either through the roof or wall. To vent through a wall, a 90° elbow is needed.

Mounting Height

Select a mounting height between a minimum of 24" (61 cm) for an electric cooking surface, a minimum of 30" (76.2 cm) for a gas cooking surface, and a suggested maximum of 36" (91.4 cm) above the range to the bottom of the hood.

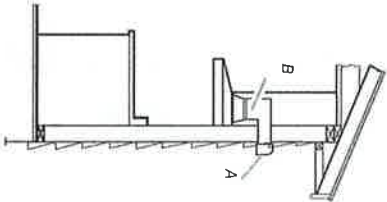
Rear discharge

A 90° elbow may be installed immediately above the hood.

Roof Venting



Wall Venting



A. Roof cap
B. 6" (15.2 cm) round vent

A. Wall cap
B. 6" (15.2 cm) round vent

Installation Requirements

Tools and Parts










Parts supplied
Removing the packaging

CAUTION
Remove the carton carefully. Wear gloves to protect against sharp edges.

WARNING

Remove the protective film covering the product before putting into operation.

- Hood canopy assembly with blower and LED lamps already installed.
- 6" (15.2 cm) round air transition
- Duct covers
- Hardware bag with:

| Part | Qty | Part | Qty |
|--|-----|--|-----|
|  5x45 mm | 6 |  5.4x75 mm screws (for 10x60 mm wall anchors) | 4 |
|  8x40 mm | 2 |  Torx 10 adapter | 1 |
|  3.5x9.5 mm | 2 |  Duct cover bracket | 1 |
|  4x8 mm | 4 |  Mounting template | 1 |
|  10 x 60 mm | 4 | | |

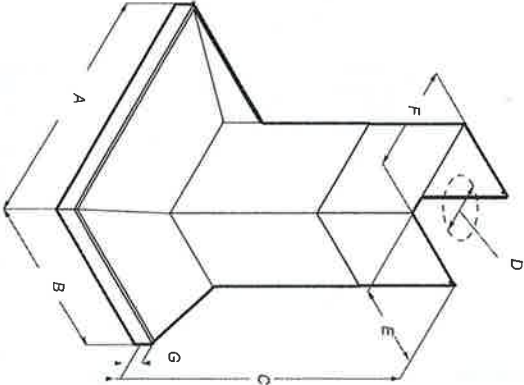
Tools/Materials required

- Level
- Drill with 1½" (3.2 cm), ⅝" (3.2 mm), and ⅛" (4.8 mm) drill bits
- Pencil
- Wire stripper or utility knife
- Tape measure or ruler
- Pliers
- Caulking gun and weatherproof caulking compound
- Vent clamps
- Jigsaw or keyhole saw
- Flat-blade screwdriver
- Metal snips
- Phillips & Torx 20 screwdriver

Parts needed

- Home power supply cable
- ½" (12.7 mm) UL listed or CSA approved strain relief
- 3 UL listed wire connectors
- 1 wall or roof cap
- Metal vent system

Dimensions and Clearances



| | NK30K7000WS NK30K7000WG | NK36K7000WS NK36K7000WG |
|----|---|----------------------------|
| A | 30" (76 cm) | 36" (91.2 cm) |
| B | 19 1/8" (50 cm) | |
| C* | max. 39 3/8" (100.3 cm) min. 25 7/8" (64.5 cm) | |
| D | 6" (15.24 cm) | |
| E | 10 3/8" (26.9 cm) | |
| F | 13 5/8" (33.2 cm) | |
| G | 22 3/4" (6 cm) | |

*For vented installations

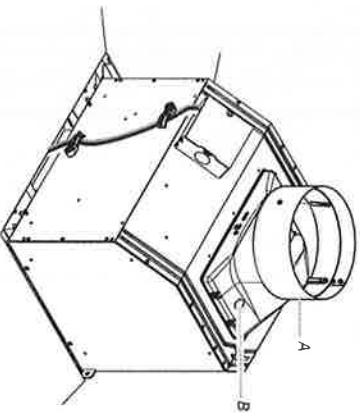
Handwritten signature

Installation

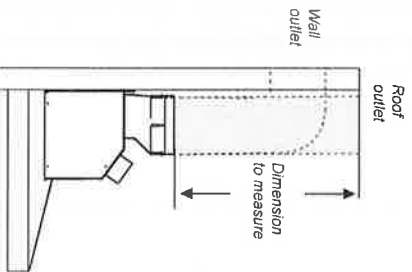
Connecting the Vent System

This hood is compatible with vented installations only.

1. Install the transition on the top of the hood (if removed for shipping) using 2 - 3.5 x 9.5 mm sheet metal screws.



2. Fit the vent system over the exhaust outlet.
3. Measure from the bottom of the air deflector to the bottom of the hood outlet. Cut the ductwork at the measured length.



4. Seal the connection with clamps.
5. Check that the back draft dampers work properly.

Electrical Connection

⚠ WARNING

Electrical Shock Hazard

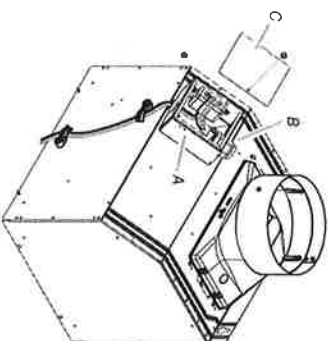
Disconnect power before servicing.

Replace all parts and panels before operating.

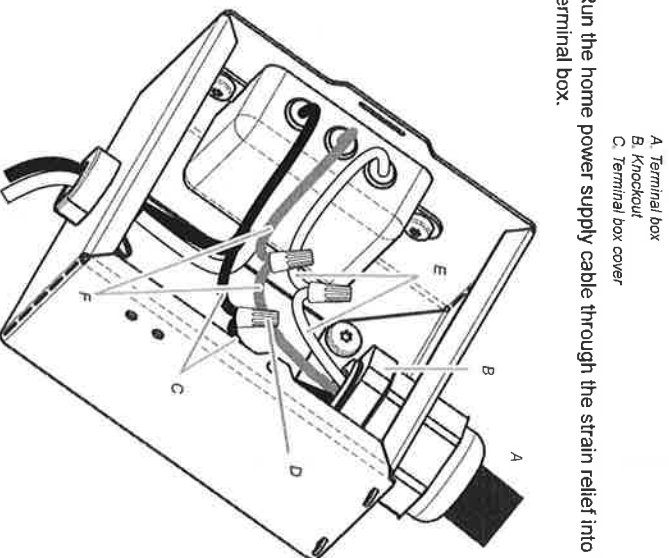
Failure to do so can result in death or electrical shock.

1. Disconnect power.
2. Remove the terminal box cover.

3. Remove the knockout in the terminal box cover and install a UL listed or CSA approved 1/2" strain relief.



4. Run the home power supply cable through the strain relief into the terminal box.



5. Use UL listed wire connectors and connect the black wires (C) together.
6. Use UL listed wire connectors and connect the white wires (E) together.

⚠ WARNING

Electrical Shock Hazard

Electrically ground blower.

Connect the ground wire to the green and yellow ground wire in the terminal box. Failure to do so can result in death or electrical shock.

7. Connect the green (or bare) ground wire from the home power supply to the yellow-green ground wire (F) in the terminal box using UL listed wire connectors.
8. Tighten the strain relief screw.
9. Install the terminal box cover.
10. Reconnect the power.

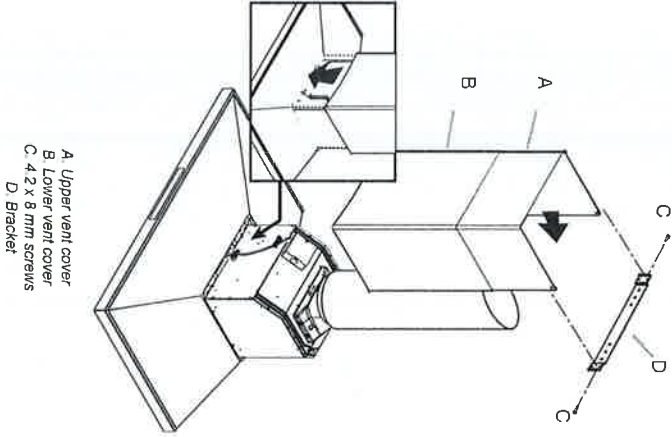
Installation

Installing the duct covers

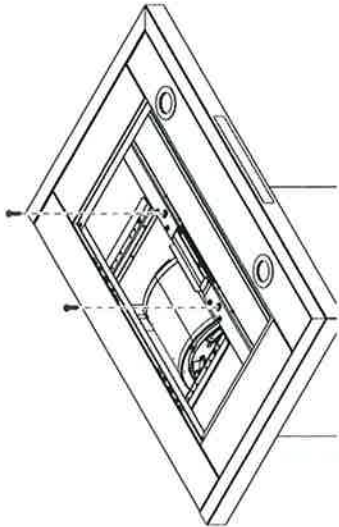
When using both upper and lower vent covers, push the lower cover down onto hood and lift the upper cover to the ceiling and install with two mounting screws.

NOTE

The upper vent cover may be reversed to hide the slots.



Secure the bottom of the duct with 2 - 4.2 x 8 mm screws.



Completing the Installation

1. Install the metal baffle filters. See the "Range Hood Care" section.
2. Check the operation of the range hood blower and light. See the "Range Hood Use" section.

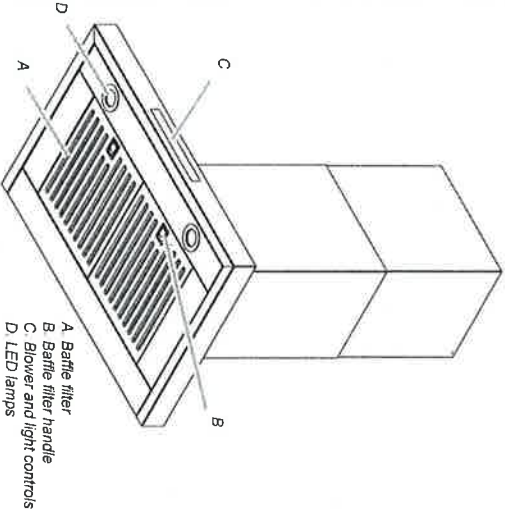
NOTE

To get the most efficient use from your new range hood, read the "Range Hood Use" section.

Range Hood Use

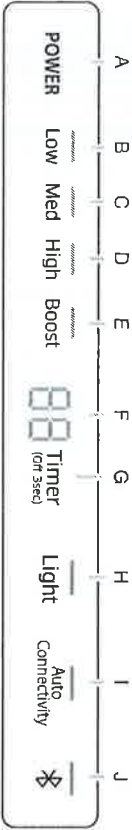
Range Hood Description

The range hood is designed to remove smoke, cooking vapors, and odors from the cooktop area. For best results, start the hood before cooking and allow it to operate several minutes after cooking is complete to clear all smoke and odors from the kitchen. The hood controls are located on the front side.



Range Hood Use

Range Hood Controls



A. Power
B. Low Speed
C. Medium Speed
D. High Speed
E. Boost Speed
F. Timer Display
G. Timer
H. Light
I. Auto Connectivity
J. Bluetooth

- POWER**
 - Press the POWER button and the hood will be activated at default speed (Default Speed : Low).
 - Press again and the hood will return to sleep mode.
- LOW**
 - Press the LOW button and the hood will be activated at Low speed.
- MED**
 - Press the MED button and the hood will be activated at Medium speed.
- HIGH**
 - Press the HIGH button and the hood will be activated at High speed.
- BOOST**
 - Press the BOOST button and the hood will be activated at Maximum speed for 10 minutes.
 - After 10 minutes, the hood will slow to High speed.
- Timer Display**
 - Shows the timer settings.
- Timer**
 - Setting the timer ON**
 - Press the Timer button to set the working time.
 - Each time you press the Timer, you add 10 minutes to the displayed time, up to a maximum of 99 minutes. The hood will stay on for the amount of time you have set.
 - After the Timer counts down to zero, the Timer LED light will start to blink.
 - The Timer LED will blink for 5 seconds, and then the hood will turn off automatically.
 - Setting the timer OFF**
 - Press the Timer button for 3 seconds and the Timer function will turn off.
- Light**
 - Press the Light button and the lamps will turn on.
 - Press the Light button again and the lamps will turn off.
- Sound**
 - Muting / Unmuting the hood.**
 - Press and hold the Light button for 3 seconds to turn off the hood sounds.
 - Press and hold again to turn on the sounds.

COOKTOP AND RANGE HOOD CONNECTIVITY
This appliance has a feature which allows you to pair compatible Samsung cooktops and your hood via Bluetooth.

After you enable this function and pair your hood and a compatible cooktop, the hood fan will automatically come on at Low speed when you turn on a cooktop element. The hood fan will also shut off automatically when you turn off the cooktop elements.

In addition, after the hood and compatible cooktop are paired, you can download the Samsung Smart Home app to a mobile device, and then use the Samsung Smart Home app to:

- Monitor and control the On/Off status of the hood.
- Monitor and control the fan speed.
- Monitor and control the lights.
- Set the hood shut-off timer with the time-up alarm.

For more information about downloading the Samsung Smart Home app to your mobile device and using it to control your hood, visit: www.samsung.com.

- Bluetooth connection (Pairing)**
 - Press the Bluetooth button on hood. The pairing mode will be activated and the indicator on the Bluetooth button will blink.
 - Press the Bluetooth button on cooktop.

NOTE
For a detailed description of the pairing method, see the user manual of a compatible Samsung cooktop.

- After the pairing process finishes, the Bluetooth light will stay lit and **BLC** appears in the display.

Bluetooth disconnection (Pairing reset)

- Press and hold the Bluetooth button on the hood for 3 seconds.
- The Bluetooth connection disconnects.

Auto Connectivity

The Auto Connectivity function lets you quickly connect the hood via Bluetooth with a compatible Samsung cooktop after the hood and cooktop have been paired. To turn the function on, press the Auto Connectivity button. To turn the function off and disconnect the hood and cooktop, press the Auto Connectivity button again.

While the hood and cooktop are connected, the hood fan will automatically come on at Low speed when you turn on a cooktop element. The hood fan will also shut off automatically when you turn off the cooktop elements. You will also be able to control the hood with the Samsung Smart Home app as described above.

- Press the Auto Connectivity button to activate the function.
- The hood will turn on/off automatically following the cooktop.
- Press again to deactivate the function.

| Image | Remote Control by Samsung Smart Home App | Auto Connectivity | Hood Function |
|-------------------|--|-------------------|---------------|
| Auto Connectivity | X | X | O |
| Auto Connectivity | O | X | O |
| Auto Connectivity | O | O | O |

NOTE

These functions are only available if you have installed a compatible Samsung Bluetooth cooktop.