



CONSTRUCTION SUMMARY

North Oakville - 44 - 1 - PEACHTREE (38-05) ELEV A

Registere Plan Number: Municipal Address: Closing: 30-Jul-20

CONSTRUCTION

Inv.13 15 Line 252	1 - STAIRCASE: CLOSE OPEN TO BELOW AREA OF STAIRS. FROM MAIN FLOOR T BASEMENT. SEE SKETCH Note:
3Jul19 / 12Aug19	
Inv.13 16 Line 263	1 - MASTER BEDROOM: REINFORCE STANDARD LIGHT IN MASTER BEDROOM FOR FUTURE CEILING FAN Note:
3Jul19 / 12Aug19	
Inv.13 7 Line 79	1 - KITCHEN: DELETE WALL BETWEEN KITCHEN CABINETS AND SERVERY. ADD ADDITIONAL CABINETS/GRANITE, AS NEEDED Note:
3Jul19 / 12Aug19	
Inv.13 10 Line 240	1 - KITCHEN: MOVE WALL BETWEEN KITCHEN AND DINING ROOM INTO DINING ROOM APPROXIMATELY ONE (1) FOOT. WALL SHOULD NOW ALIGN WITH THE WALL OF THE LIBRARY. SEE SKETCH Note:
3Jul19 / 12Aug19	

ELECTRICAL

Inv.13 8 Line 80	1 - CABINET LIGHTING - UNDERMOUNT T-5 LED VALANCE LIGHT (\$200 PER LIGHT) Note:
3Jul19 / 12Aug19	
Inv.13 9 Line 81	1 - VALANCE LIGHTING - UNDER CABINET - DOES NOT INCLUDE LIGHTING Note:
3Jul19 / 12Aug19	
Inv.13 12 Line 249	1 - KITCHEN: INSTALL RECEPTACLES - ADDITIONAL 15 AMP 120 VOLT RECEPTABLE FOR GAS STOVE Note:
3Jul19 / 12Aug19	
Inv.13 13 Line 250	1 - KITCHEN: INSTALL ELECTRICAL - ROUGH-IN FOR 30 - 40 AMP BUILT-IN WALL OVEN OR COOK TOP. SEE SKETCH FOR LOCATION Note:
3Jul19 / 12Aug19	
Inv.13 4 Line 76	1 - IP 6 CHANNEL ROUGH-IN ONLY Note:
3Jul19 / 12Aug19	
Inv.13 1 Line 73	1 - BEL AND CABLE LOCATION SKETCH. LOCATIONS MAY VARY SLIGHTLY DUE TO JOIST LOCATIONS Note:
3Jul19 / 12Aug19	

HVAC

Inv.13 11 Line 248	1 - KITCHEN: INSTALL GAS PIPING AND OTHER - GAS LINE R/I FOR BASEMENT OR MAIN FLOOR - STOVE - UP TO 3/4 INCH LINE Note:
3Jul19 / 12Aug19	

MISCELLANEOUS



North Oakville - 44 - 1 - PEACHTREE (38-05) ELEV A

Registere Plan Number: Municipal Address: Closing: 30-Jul-20

Inv.13	1 - Purchasers are aware & accepts that ANY changes made to upgrades after signing this Purchasers
19	Extra Form are subject to a minimum administration fee of \$500. PLUS a 10% holdback fee.
Line 267	Note:
3Jul19 / 12Aug19	
Inv.13	1 - Purchaser has attended a Structural appointment at the Decor Centre & has DECLINED any additional
18	upgrades and accepts and acknowledges that there will be no further structural
	changes/additions/deletions to be made upon signing on August 8, 2019.
Line 266	Note:
3Jul19 / 12Aug19	

PLUMBING

Inv.13	1 - EXTRA ROUGH-IN LINE FOR FRIDGE ICE MAKER WITH SHUT-OFF
5	
Line 77	Note:
3Jul19 / 12Aug19	
Inv.13	1 - BACKFLOW PREVENTER VALVE
6	
Line 78	Note:
3Jul19 / 12Aug19	

VACCUM/BELL

Inv.13	1 - INTERCOM WIRING - CAT-5E NETWORK CABLE
14	
Line 251	Note:
3Jul19 / 12Aug19	
Inv.13	1 - LIBRARY: INSTALL INTERNET - CAT-6 NETWORK CABLE TO GO IN LIBRARY
2	
Line 74	Note: LOCATIONS MAY VARY SLIGHTLY DUE TO JOIST LOCATIONS
3Jul19 / 12Aug19	
Inv.13	1 - WIRELESS ACCESS POINT PACKAGE - 2-CAT6 NETWORK CABLES AND 2-UBIQUITI AC
3	LITE ACCESS POINTS
Line 75	Note:
3Jul19 / 12Aug19	

WINDOWS

Inv.13	1 - BASEMENT: INSTALL BASEMENT WINDOW - EXTRA STANDARD WINDOW - 30 X 16
17	
	NOTE: TO BE APPROVED BY CONSTRUCTION. MAY REQUIRE A WINDOW WELL
Line 265	Note:
3Jul19 / 12Aug19	

Electrical — (E)  
 Cable — (C)  
 Telephone — (T)

# Peachtree

Elevation A

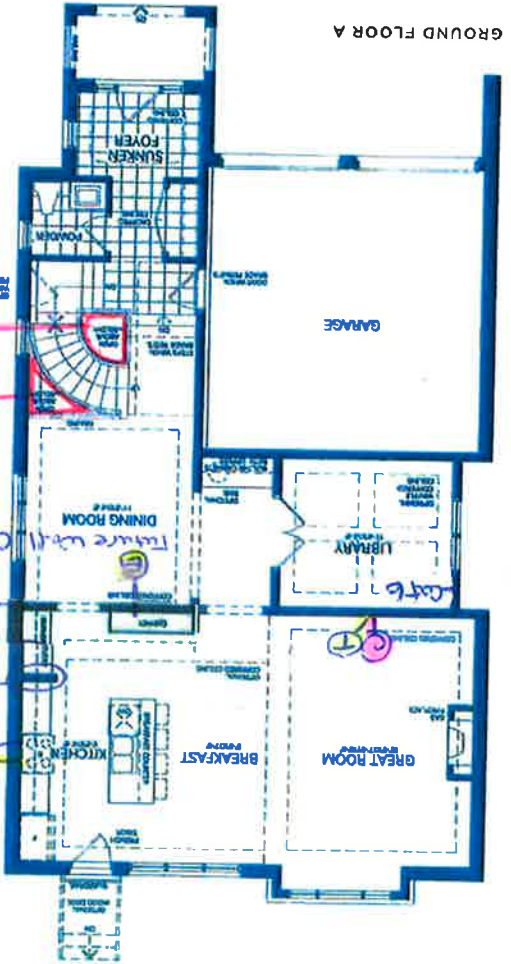
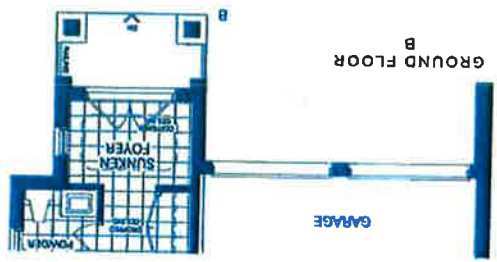
2,917 Sq.ft.

Includes 110 Sq.ft. of Finished Basement

2,933 Sq.ft.

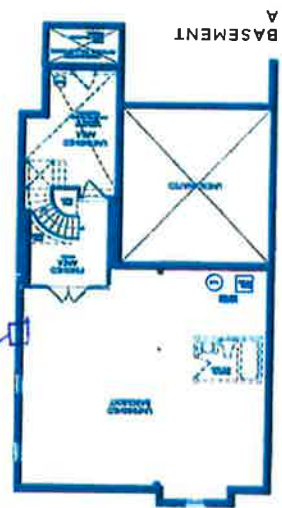
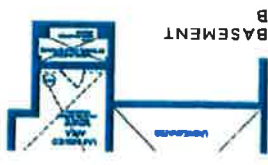
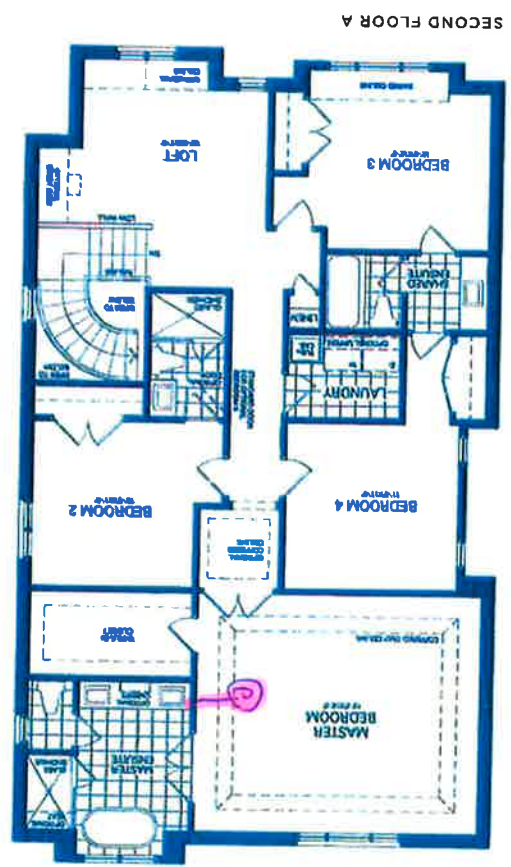
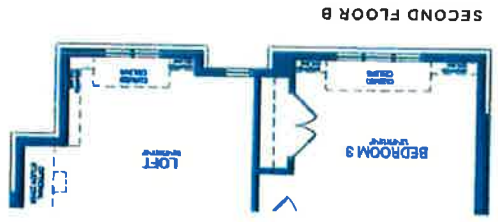
Elevation B

Includes 110 Sq.ft. of Finished Basement



Handwritten notes on Ground Floor A diagram:

- Close areas to below only
- Align wall with library
- Delete wall & extend cabinets



Disclaimer: All dimensions are approximate and subject to normal construction variances. Dimensions may exceed the useable floor area. Sizes and specifications subject to change without notice. Furniture is displayed for illustration purposes only and does not necessarily reflect the electrical plan for the suite. Suites are sold unfinished. Balcony and facade variations may apply. Contact a sales representative for further details. E.A.O.E. ©Valery Homes 2018. All rights reserved.



**PRODUCT MODEL NUMBERS**

KVMB600D

KVMB606D

**Electrical:** A 120 Volt, 60 HZ, AC only, 15-amp, fused electrical circuit is required.

**VENTING METHODS**

This canopy range hood is factory set for venting through the roof or through the wall.

A 6" (15.2 cm) round vent system is needed for installation (not included). The hood exhaust opening is 6" (15.2 cm) round.

**NOTE:** Flexible vent is not recommended. Flexible vent creates back pressure and air turbulence that greatly reduce performance.

Vent system can terminate either through the roof or wall. To vent through a wall, a 90° elbow is needed.

**Rear Discharge**

A 90° elbow may be installed immediately above the hood.

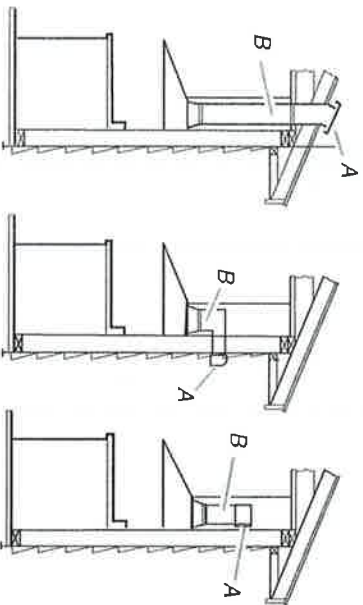
**For Non-Vented (Recirculating) Installations**

If it is not possible to vent cooking fumes and vapors to the outside, the hood can be used in the non-vented (recirculating) version, using a Recirculation Kit (which includes charcoal filters and a deflector). To order, see the "Assistance or Service" section.

**Roof Venting**

**Wall Venting**

**Non-Vented (Recirculating)**



A. Roof cap  
B. 6" (15.2 cm) round vent

A. Wall cap  
B. 6" (15.2 cm) round vent

A. Diverter  
B. 6" (15.2 cm) round vent

**Calculating Vent System Length**

To calculate the length of the system you need, add the equivalent feet (meters) for each vent piece used in the system.

**Vent System**

**Vent Piece**

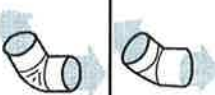
**6" (15.2 cm) Round**

45° elbow

2.5 ft  
(0.8 m)

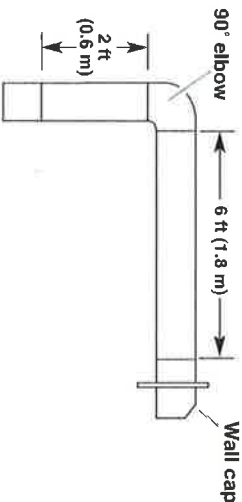
90° elbow

5.0 ft  
(1.5 m)



Maximum equivalent vent length is 35 ft (10.7 m).

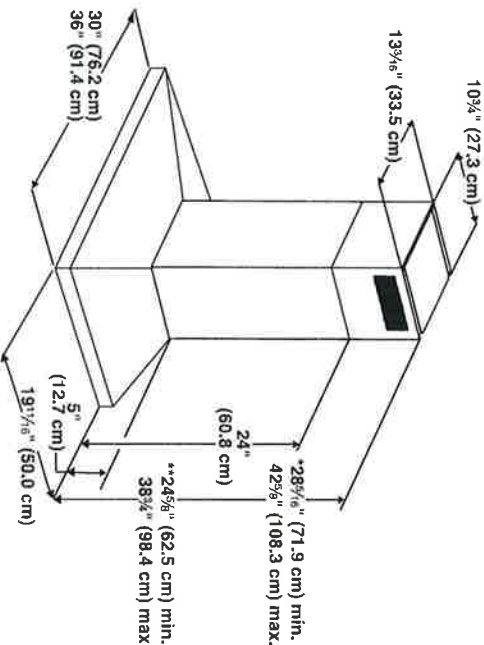
**Example Vent System**



The following example falls within the maximum recommended vent length of 35 ft (10.7 m).

- 1 - 90° elbow = 5.0 ft (1.5 m)
- 1 - wall cap = 0.0 ft (0.0 m)
- 8 ft (2.4 m) straight = 8.0 ft (2.4 m)
- Length of system = 13.0 ft (3.9 m)

**PRODUCT DIMENSIONS**

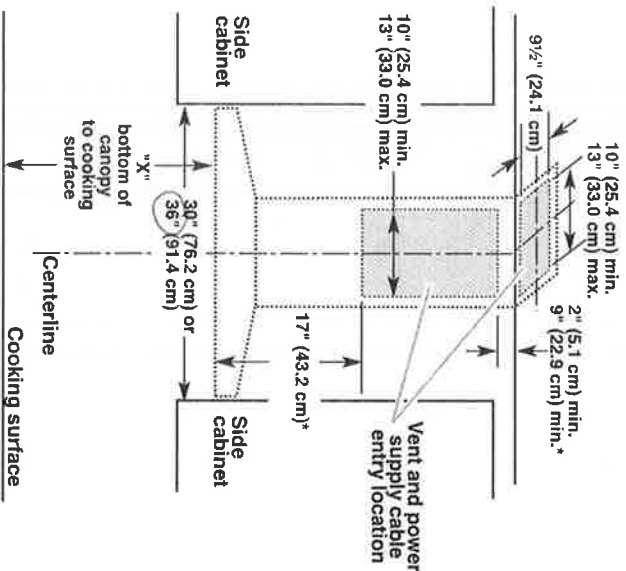


\*For non-vented (recirculating) installations

\*\*For vented installations

*[Handwritten signature]*

CABINET DIMENSIONS



\*For non-vented (recirculating) installations

IMPORTANT:

Minimum distance "X": 24" (61.0 cm) from electric cooking surface.

Minimum distance "X": 27" (68.6 cm) from gas cooking surfaces.

Suggested maximum distance "X": 36" (91.4 cm)

The chimneys can be adjusted for different ceiling heights. See the following chart.

Vented Installations		
	Min. ceiling height	Max. ceiling height
Electric cooking surface	7' 1" (2.16 m)	9' 2" (2.79 m)
Gas cooking surface	7' 4" (2.23 m)	9' 2" (2.79 m)
Non-vented (recirculating) Installations		
	Min. ceiling height	Max. ceiling height
Electric cooking surface	7' 1" (2.16 m)	9' 6" (2.9 m)
Gas cooking surface	7' 4" (2.23 m)	9' 6" (2.9 m)

**\*NOTE:** The range hood chimneys are adjustable and designed to meet varying ceiling or soffit heights depending on the distance "X" between the bottom of the range hood and the cooking surface. For higher ceilings, a Chimney Extension Kit is available from your dealer or an authorized parts distributor. The chimney extension replaces the chimney shipped with the range hood. To order, see the "Assistance or Service" section.

30" (76.2 CM) AND 36" (91.4 CM) GAS BUILT-IN COOKTOP

PRODUCT MODEL NUMBERS

KCGS350E	KCGS950E	MGC9530D	WCG75US0D
KCGS356E	KCGS956E	MGC9536D	WCG97US0D
KCGS550E	MGC7430D	WCG51US0D	WCG97US6D
KCGS556E	MGC7536D	WCG51US6D	

GAS SUPPLY REQUIREMENTS

Type of Gas

Natural Gas:

- This cooktop is factory set for use with Natural gas. If converting to LP gas, see the "LP Gas Conversion" instructions provided in the package containing literature. The model/serial rating plate located on the underside of the cooktop base has information on the types of gas that can be used. If the types of gas listed do not include the type of gas available, check with the local gas supplier.

LP Gas Conversion:

Conversion must be done by a qualified service technician.

No attempt shall be made to convert the cooktop from the gas specified on the model/serial rating plate for use with a different gas without consulting the serving gas supplier. See the Gas Conversion instructions provided in the package containing literature.

Gas Supply Line

- Provide a gas supply line of 3/4" (1.9 cm) rigid pipe to the cooktop location. A smaller size pipe on longer runs may result in insufficient gas supply. Pipe-joint compounds that resist the action of LP gas must be used. Do not use TEFLON® tape. With LP gas, piping or tubing size should be 1/2" minimum. Usually, LP gas suppliers determine the size and materials used in the system.

Flexible metal appliance connector:

- If local codes permit, use a 1/2" or 3/4" I.D. flexible stainless steel tubing gas connector, designed by CSA to connect the cooktop to the rigid gas supply line.

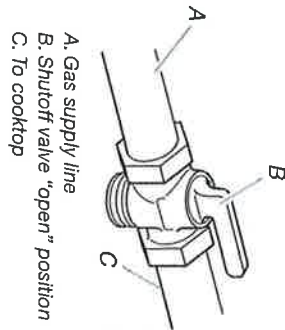


- A 1/2" male pipe thread is needed for connection to the female pipe threads of the inlet to the cooktop pressure regulator.
- Do not kink or damage the flexible metal tubing when moving the cooktop.

*Handwritten signature*

- Must include a shutoff valve:

The supply line must be equipped with a manual shutoff valve. This valve should be located in the same room but external to the cooktop opening, such as an adjacent cabinet. It must be accessible without removing the cooktop, and it should be in a location that allows ease of opening and closing. Do not block access to shutoff valve. The valve is for turning on or shutting off gas to the cooktop.



®TEFLON is a registered trademark of E.I. Du Pont De Nemours and Company.

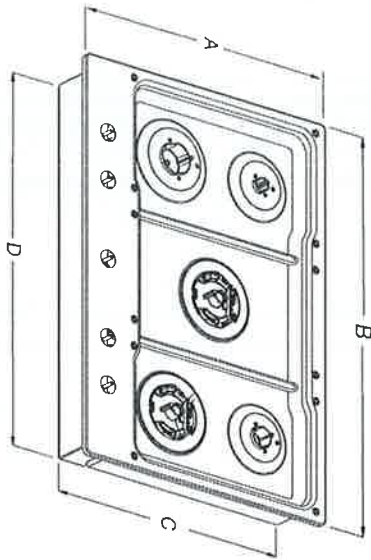
ELECTRICAL REQUIREMENTS

- A 120 volt, 60 Hz, AC only, 15-amp, fused electrical circuit is required. A time-delay fuse or circuit breaker is also recommended. It is recommended that a separate circuit serving only this cooktop be provided.
- Electronic ignition systems operate within wide voltage limits, but proper grounding and polarity are necessary. Check that the outlet provides 120-volt power and is correctly grounded.

Lot 44

PRODUCT DIMENSIONS

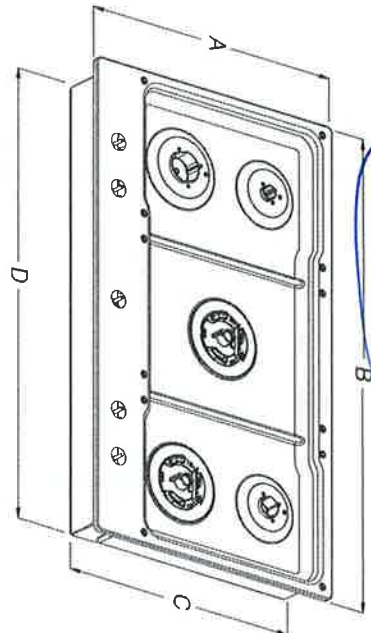
KCGS550ESS and KCGS950ESS Models



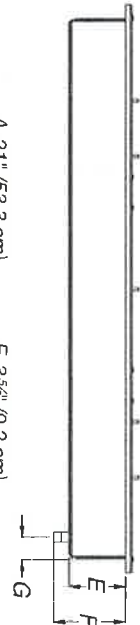
- A. 21" (53.3 cm)
- B. 30" (76.2 cm)
- C. 19 3/8" (49.2 cm)
- D. 28 3/8" (72.1 cm)
- E. 3 3/8" (9.2 cm)
- F. 4 5/16" (11.6 cm)
- G. 1 3/8" (3.4 cm)



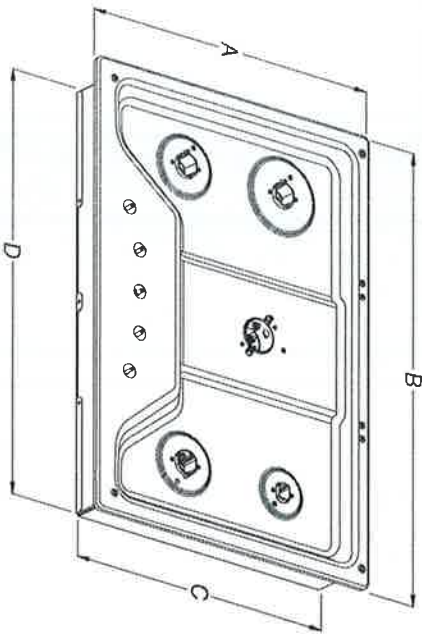
KCGS556ESS and KCGS956ESS Models



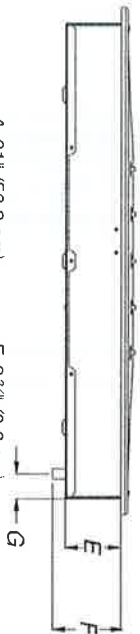
- A. 21" (53.3 cm)
- B. 36 1/2" (92.0 cm)
- C. 19 3/8" (49.2 cm)
- D. 34 3/8" (88.1 cm)
- E. 3 3/8" (9.2 cm)
- F. 4 5/16" (11.6 cm)
- G. 1 7/16" (3.6 cm)



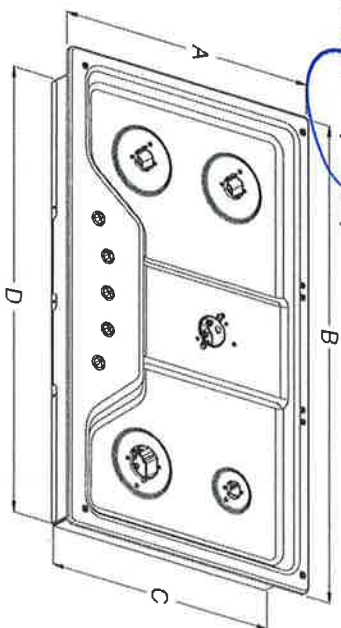
All Other 30" (76.2 cm) Models



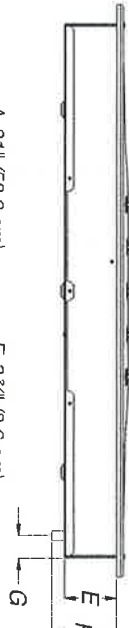
- A. 21" (53.3 cm)
- B. 30" (76.2 cm)
- C. 18 7/8" (48.0 cm)
- D. 28 3/8" (72.1 cm)
- E. 3 3/8" (8.6 cm)
- F. 4 1/8" (10.5 cm)
- G. 1 1/2" (3.8 cm)



All Other 36" (91.4 cm) Models



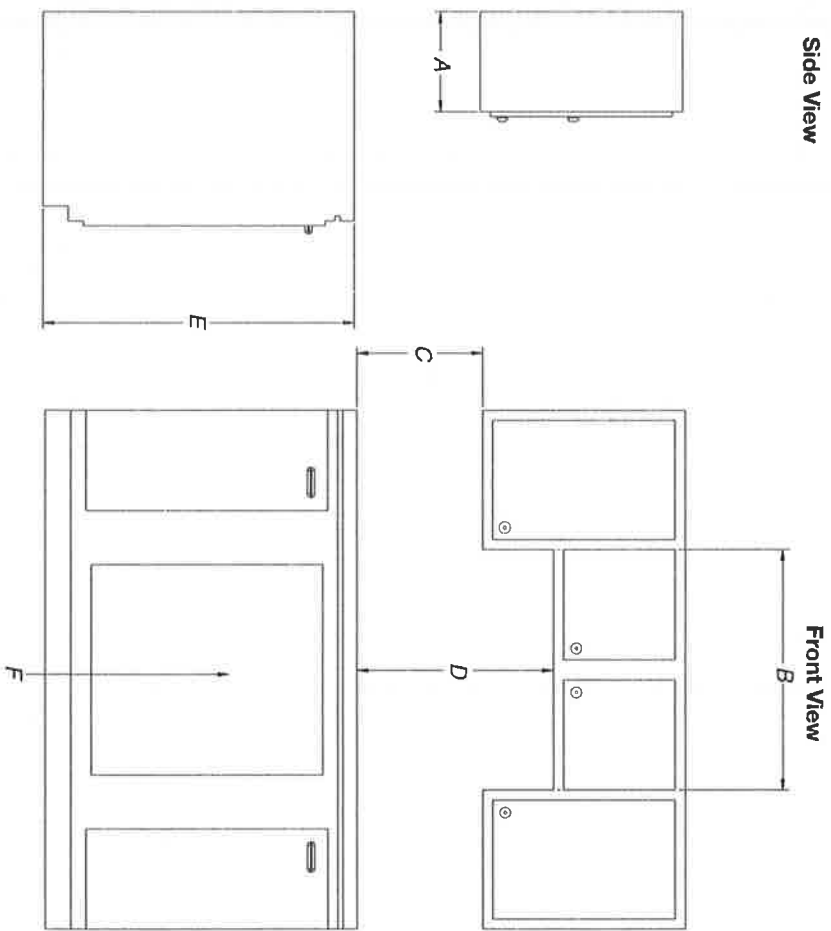
- A. 21" (53.3 cm)
- B. 36" (91.4 cm)
- C. 18 7/8" (48.0 cm)
- D. 33 3/4" (85.7 cm)
- E. 3 3/8" (8.6 cm)
- F. 4 1/8" (10.5 cm)
- G. 1 1/2" (3.8 cm)



2/2/21

Lot 44

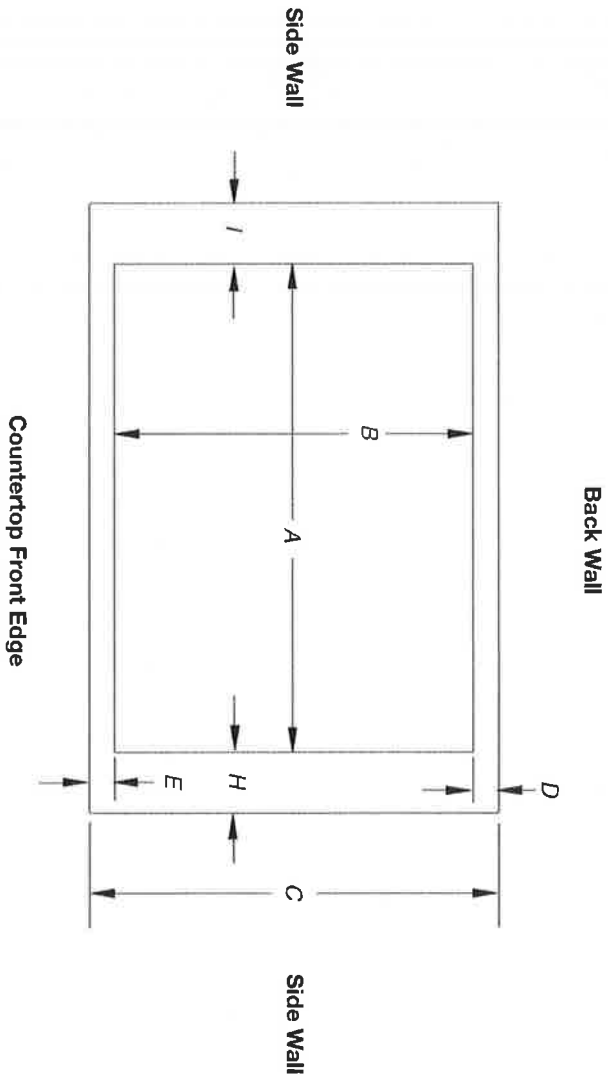
CABINET DIMENSIONS



- A. 13" (33.0 cm) recommended upper cabinet depth.
- B. 30" (76.2 cm) for 30" models; 36" (91.4 cm) for 36" models.
- C. 18" (45.7 cm) minimum clearance from upper cabinet to countertop within minimum horizontal clearances to cooktop.
- D. 30" (76.2 cm) minimum clearance between top of cooktop platform and bottom of uncovered wood or metal cabinet. 24" (61 cm) minimum clearance if bottom of wood or metal cabinet is covered by not less than 1/4" [0.6 cm] flame retardant milboard covered with not less than No. 28 MSG sheet steel, 0.015" [0.04 cm] stainless steel, or 0.024" [0.06 cm] aluminum or 0.020" [0.05 cm] copper
- E. 36" (91.4 cm) top of countertop to floor.
- F. Gas line opening - Wall: anywhere 5" (12.7 cm) below underside of countertop. Cabinet floor: anywhere within 6" (15.2 cm) of rear wall is recommended.



1 of 44



Cutout (Product Opening) Dimensions						
30" (76.2 cm) Models						
Models	A			B		
	Min	Recommended	Max	Min	Recommended	Max
KCGS550 and KCGS950 All Other 30" (76.2 cm) Models	28 1/2" (72.4 cm) 28 1/2" (72.4 cm)	28 7/8" (73.4 cm) 28 7/8" (73.4 cm)	29 3/16" (74.3 cm) 29 3/16" (74.3 cm)	19 1/2" (49.5 cm) 19" (48.3 cm)	19 9/16" (50.2 cm) 19 1/2" (49.5 cm)	20" (50.8 cm) 20" (50.8 cm)
36" (91.4 cm) Models						
KCGS556 and KCGS956 All Other 36" (91.4 cm) Models	34 7/8" (88.4 cm) 33 7/8" (86.0 cm)	35 3/16" (89.4 cm) 34 3/16" (87.0 cm)	35 3/8" (90.3 cm) 35 1/2" (89.5 cm)	19 1/2" (49.5 cm) 19" (48.3 cm)	19 3/16" (50.2 cm) 19 1/2" (49.5 cm)	20" (50.8 cm) 20" (50.8 cm)

Side Walls (Combustible Surfaces)	
Models	H and I
KCGS5 and KCGS9	H and I added together must be at least 48" (122.0 cm), with each side individually being at least 8" (20.3 cm).
KCGS350, KCGS356, MGC9536, WCG97US0, WCG97US6	H and I added together must be at least 48" (122.0 cm), with each side individually being at least 12" (30.5 cm).
All Other Models	Both have to be 8" (20.3 cm) or more.

Back Wall and Countertop Front Dimensions			
Models	C	D	E
KCGS550 and KCGS950	25" (63.5 cm)	2 7/8" (7.3 cm)	2 3/4" (6.9 cm)
All Other Models			3 1/8" (7.9 cm)

**NOTES:** After making the countertop cutout, some installations may require notching down the base cabinet side walls to clear the cooktop base. To avoid this modification, use a base cabinet with sidewalls wider than the cutout.

If cabinet has a drawer, a 4" (10.2 cm) depth clearance from the countertop to the top of the drawer (or other obstruction) in base cabinet is required. The drawer depth may need to be shortened to avoid interfering with the regulator.

**IMPORTANT:** If a built-in wall oven is to be installed below this cooktop, the grounded outlet and gas supply piping must be located in an adjacent cabinet.

This cooktop and its gas and electrical supply sources must be installed before the undercounter built-in wall oven is installed.

Lot 44

# KitchenAid® 27" (68.6 cm) and 30" (76.2 cm) Electric Built-In Microwave/Oven Combination

## PRODUCT MODEL NUMBERS

KEMS309E KOCE500E KOCE507E

## ELECTRICAL CONNECTION

If codes permit and a separate ground wire is used, it is recommended that a qualified electrical installer determine that the ground path and the wire gauge are in accordance with local codes. Check with a qualified electrical installer if you are not sure the oven is properly grounded.

This oven must be connected to a grounded metal, permanent wiring system.

Be sure that the electrical connection and wire size are adequate and in conformance with the National Electrical Code, ANSI/NFPA 70-latest edition or CSA Standards C22, 1-94, Canadian Electrical Code, Part 1 and C22.2 No. O-M91-latest edition, and all local codes and ordinances.

To properly install your oven, you must determine the type of electrical connection you will be using and follow the instructions provided for it here.

• Oven must be connected to the proper electrical voltage and frequency as specified on the model/serial/rating plate. See the following illustration.



A. Model/serial/rating plate

- Models rated from 7.3 to 9.6 kW at 240 volts (5.4 to 7.4 kW at 208 volts) require a separate 40-amp circuit. Models rated at 4.8 kW and below at 240 volts (3.6 kW and below at 208 volts) require a separate 30-amp circuit.
  - A circuit breaker is recommended.
  - Connect directly to the fused disconnect (or circuit breaker box) through flexible, armored or nonmetallic sheathed, copper cable (with grounding wire). See "Make Electrical Connection" section.
  - Flexible conduit from the oven should be connected directly to the junction box.
  - Do not cut the conduit. The length of conduit provided is for serviceability of the oven.
  - A UL listed or CSA approved conduit connector must be provided.
- If the house has aluminum wiring, follow the procedure below:
1. Connect a section of solid copper wire to the pigtail leads.
  2. Connect the aluminum wiring to the added section of copper wire using special connectors and/or tools designed and UL listed for joining copper to aluminum.

Follow the electrical connector manufacturer's recommended procedure. Aluminum/copper connection must conform with local codes and industry accepted wiring practices.

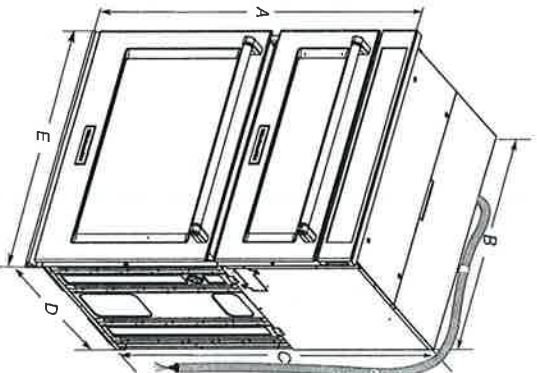
For power requirements, refer to the following table.

Model	Voltage	Amperage (L1)*	Amperage (L2)*	Rating (W)
KOCE507E/KOCE500E	120/240	32	30	8000
KOCE507E/KOCE500E	120/208	30	28	6600

\*Amperage values noted above are for information purposes only: the units are rated in watts.

Because Whirlpool Corporation includes a continues commitment to improve our products, we reserve the right to change materials and specifications without notice.

## PRODUCT DIMENSIONS



### 27" (68.6 cm) models

- A. 42<sup>9</sup>/<sub>16</sub>" (108.0 cm) overall height
- B. 25<sup>1</sup>/<sub>8</sub>" (64.6 cm) recessed width
- C. 41" (104.1 cm) recessed height
- D. 23<sup>1</sup>/<sub>4</sub>" (59.1 cm) max. recessed depth

E. 27" (68.6 cm) overall width

F. 48" (121.9 cm) flexible conduit length measured from the conduit clamp located at the rear of the oven. Do not remove the conduit clamp.

### 30" (76.2 cm) models

A. 42<sup>9</sup>/<sub>16</sub>" (108.0 cm) overall height

B. 28<sup>7</sup>/<sub>16</sub>" (72.3 cm) recessed width

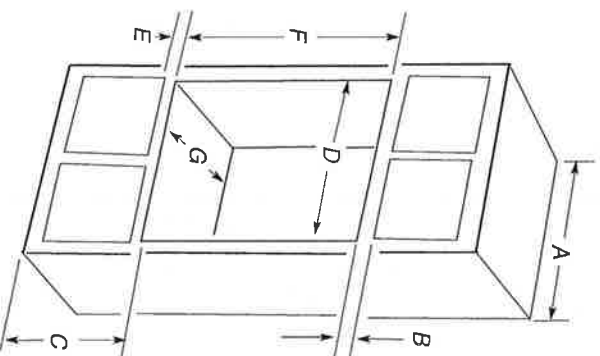
C. 41" (104.1 cm) recessed height

D. 23<sup>1</sup>/<sub>4</sub>" (59.1 cm) max. recessed depth

E. 30" (76.2 cm) overall width

F. 48" (121.9 cm) flexible conduit length measured from the conduit clamp located at the rear of the oven. Do not remove the conduit clamp.

## Cabinet Dimensions



### 27" (68.6 cm) models

- A. 27" (68.6 cm) min. cabinet width
- B. 1" (2.5 cm) top of cutout to bottom of upper cabinet door
- C. 19<sup>1</sup>/<sub>4</sub>" (48.9 cm) bottom of cutout to floor is recommended
- D. 25<sup>1</sup>/<sub>2</sub>" (64.8 cm) cutout width
- E. 1<sup>1</sup>/<sub>2</sub>" (3.8 cm) min. bottom of cutout to top of cabinet door
- F. 41<sup>3</sup>/<sub>16</sub>" (105 cm)\* recommended cutout height
- G. 24" (60.7 cm) cutout depth

### 30" (76.2 cm) models

- A. 30" (76.2 cm) min. cabinet width
- B. 1" (2.5 cm) top of cutout to bottom
- C. 19<sup>1</sup>/<sub>4</sub>" (48.9 cm) bottom of cutout to floor is recommended
- D. 28<sup>1</sup>/<sub>2</sub>" (72.4 cm) cutout width
- E. 1<sup>1</sup>/<sub>2</sub>" (3.8 cm) min. bottom of cutout
- F. 41<sup>3</sup>/<sub>16</sub>" (105 cm)\* recommended cutout
- G. 24" (60.7 cm) cutout depth

\* NOTE: The cabinet height can be between 41" (104.1 cm) and 41<sup>1</sup>/<sub>2</sub>" (105.6 cm) for microwave/oven combination.

Dimensions are for planning purposes only. For complete details, see installation instructions packed with product. Specifications subject to change without notice.

Ref. WH072663B  
2/10/15

Handwritten signature in blue ink.