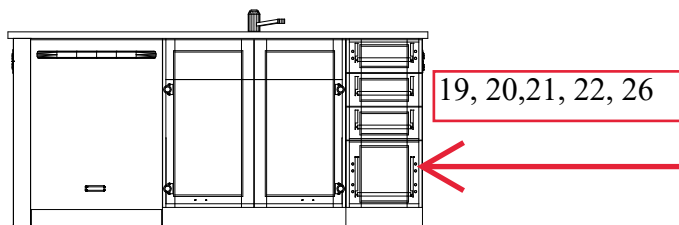


ITEM #14 - OPTIONAL KITCHEN LAYOUT

(Final Kitchen sketch to be completed and will be sent to client for approval)

Item #28 - Install 2 tone kitchen cabinets



- Item # 19 - Extend island approx. 48" wide towards dinette area
- Item #20 - S/I Optional Flush Breakfast bar on extended kitchen island
- Item #21 - Relocate sink, dishwasher and cutlery drawer in kitchen island to shift approx 12" to 30" to sink is aligned as best as possible with oven opening. Bank of drawers to be closest to the sink
- Item #22 - Shift oven space location approx. 12" toward dinette to be approx aligned with new sink location in kitchen island
- Item # 26 - LC pots and pans c/w drawe front 6/12/12- to be located in the island towards the dinette (end run of island)

DIMENSIONS MAY VARY ON SITE MEASURES/CONDITIONS