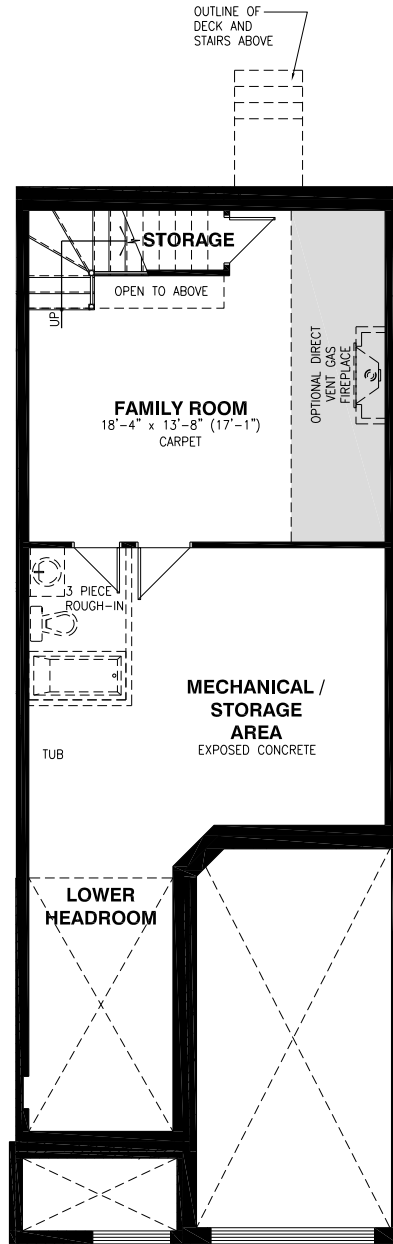


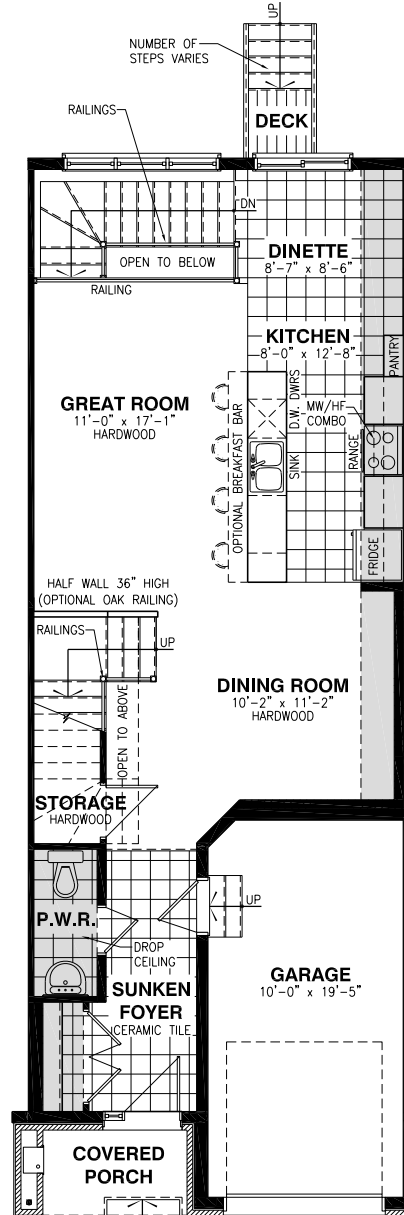
# THE THOMAS

MODEL 110

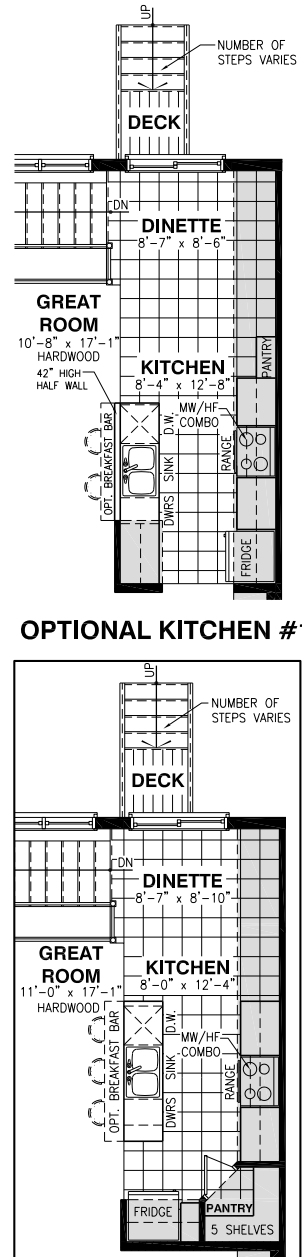
**TOWNHOME 3 BEDROOMS 2.5 BATHROOMS**  
 2051 sq.ft. (WHICH INCLUDES 306 sq.ft. FINISHED AREA IN BASEMENT)



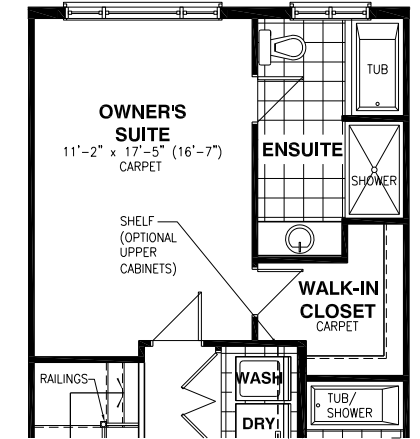
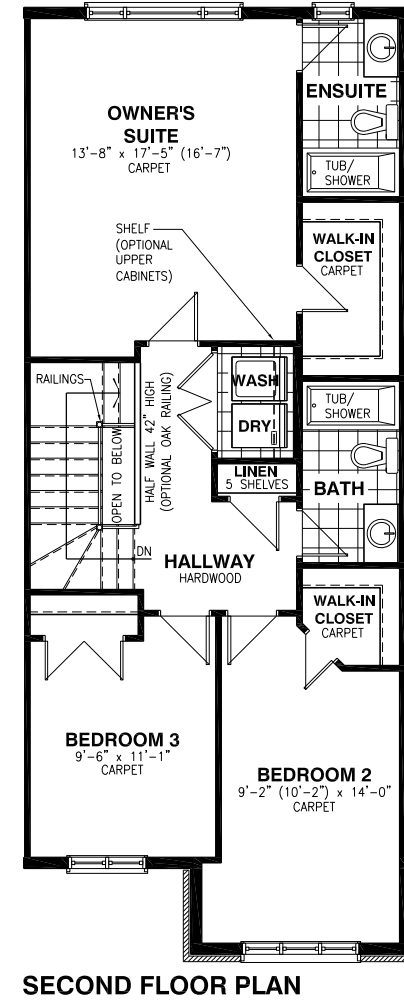
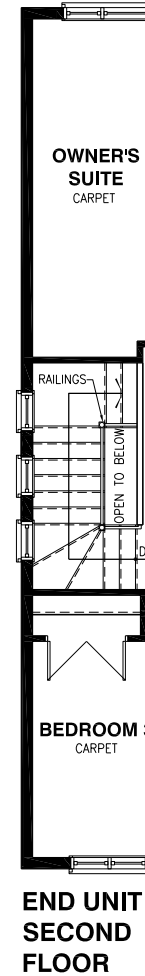
**BASEMENT FLOOR PLAN**



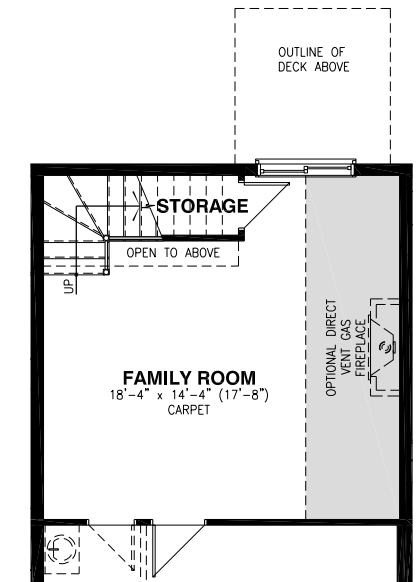
**GROUND FLOOR PLAN**



**OPTIONAL KITCHEN #2**



**OPTIONAL 4PC ENSUITE**



**WALKOUT BASEMENT WHERE APPLICABLE**

Vertical and/or horizontal bulkheads (chaseways) may be required to contain mechanical piping. All dimensions are approximate. E & O.E., plans, materials and specifications are subject to change without notice. Actual useable floor space may vary from the stated floor area. \*Note: Number of steps varies due to site grading. Bulkhead shown in grey areas.