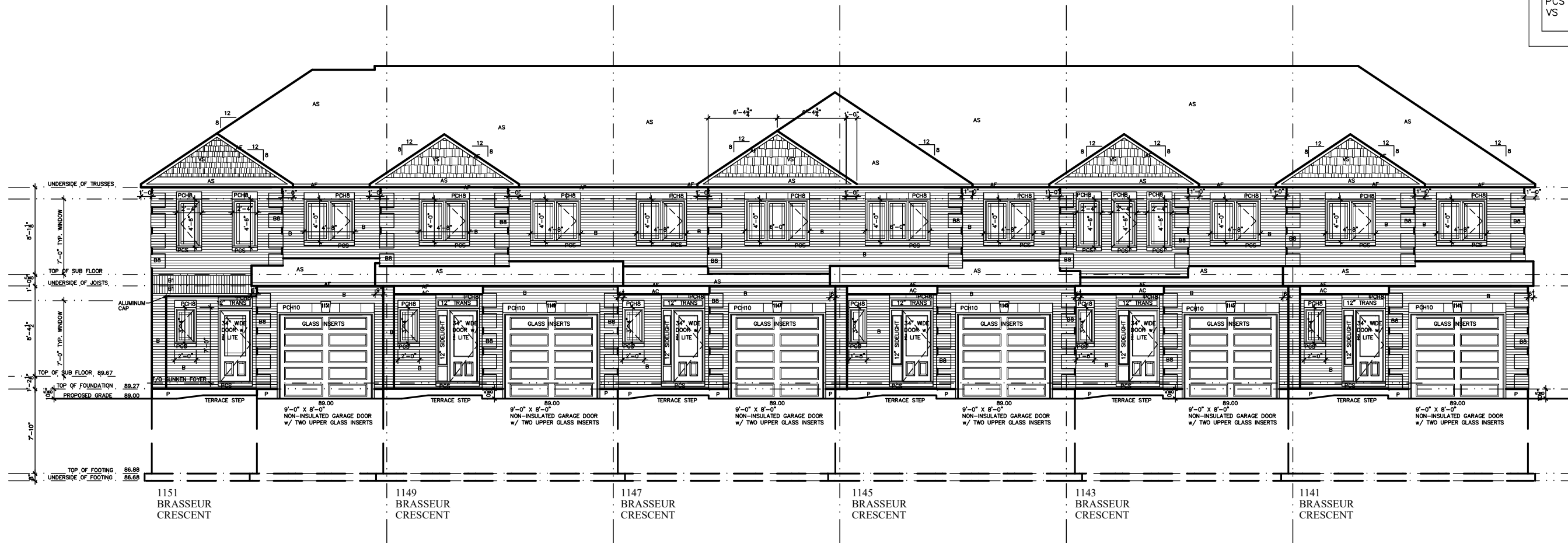


EXTERIOR FINISH LEGEND	
B	- BRICK (MAIN)
B1	- BRICK SOLDIER COURSE (ACCENT)
B2	- BRICK SOLDIER COURSE (ACCENT) 20mm PROUD
B3	- BRICK SLEEPER COURSE
B4	- STACK BOND (ACCENT)
B5	- BRICK SILL (ACCENT)
B6	- BRICK ROW LOCK (ACCENT)
B7	- BRICK CORBELLING
B8	- BRICK QUOIN 20mm PROUD
+20	- BRICK 20mm PROUD
-20	- BRICK RECESSED 20mm
S	- SIDING (HORIZONTAL)
SV	- SIDING (VERTICAL)
T	- TRIM 200mm COVE SIDING
AF	- ALUMINUM FACIA
AC	- ALUMINUM CLADDING
AS	- ASPHALT SHINGLES
F	- FLASHING
MRV	- MAXIMUM ROOF VENT
P	- PARGING
FB	- FRIEZE BOARD
PCH8	- 8" PRE-CAST CONCRETE HEADER
PCH10	- 10" PRE-CAST CONCRETE HEADER
PCS	- PRE-CAST CONCRETE SILL
VS	- VINYL SHAKE



1151 BRASSEUR CRESCENT
 1149 BRASSEUR CRESCENT
 1147 BRASSEUR CRESCENT
 1145 BRASSEUR CRESCENT
 1143 BRASSEUR CRESCENT
 1141 BRASSEUR CRESCENT

1141-1151 BRASSEUR CRESCENT



TITLE: FRONT ELEVATION

I, DANIEL GUERIN, HAVE REVIEWED THE FOLLOWING DOCUMENTS AND TAKE RESPONSIBILITY FOR THE DESIGN ACTIVITIES RELATING TO HOUSE AND SMALL BUILDINGS.

- PERSONAL BCIN #19896
 - TARIION REGISTRATION NUMBER #611
 ** SEE SIGNED SCHEDULE 1: DESIGNER INFORMATION FORM **

NO	DESCRIPTION	DATE	BY
2.	AS PER STRUCTURAL	09/22/21	AB
1.	DRAWINGS FOR JOIST AND TRUSS LAYOUTS	09/07/21	AB

ACAD FILE:	SCALE: 3/32" = 1'-0"
	DWG.
	A-1

EXTERIOR FINISH LEGEND	
B	- BRICK (MAIN)
B1	- BRICK SOLDIER COURSE (ACCENT)
B2	- BRICK SOLDIER COURSE (ACCENT) 20mm PROUD
B3	- BRICK SLEEPER COURSE
B4	- STACK BOND (ACCENT)
B5	- BRICK SILL (ACCENT)
B6	- BRICK ROW LOCK (ACCENT)
B7	- BRICK CORBELLING
B8	- BRICK QUOIN 20mm PROUD
+20	- BRICK 20mm PROUD
-20	- BRICK RECESSED 20mm
S	- SIDING (HORIZONTAL)
SV	- SIDING (VERTICAL)
T	- TRIM 200mm COVE SIDING
AF	- ALUMINUM FACIA
AC	- ALUMINUM CLADDING
AS	- ASPHALT SHINGLES
F	- FLASHING
MRV	- MAXIMUM ROOF VENT
P	- PARGING
FB	- FRIEZE BOARD
PCH8	- 8" PRE-CAST CONCRETE HEADER
PCH10	- 10" PRE-CAST CONCRETE HEADER
PCS	- PRE-CAST CONCRETE SILL
VS	- VINYL SHAKE



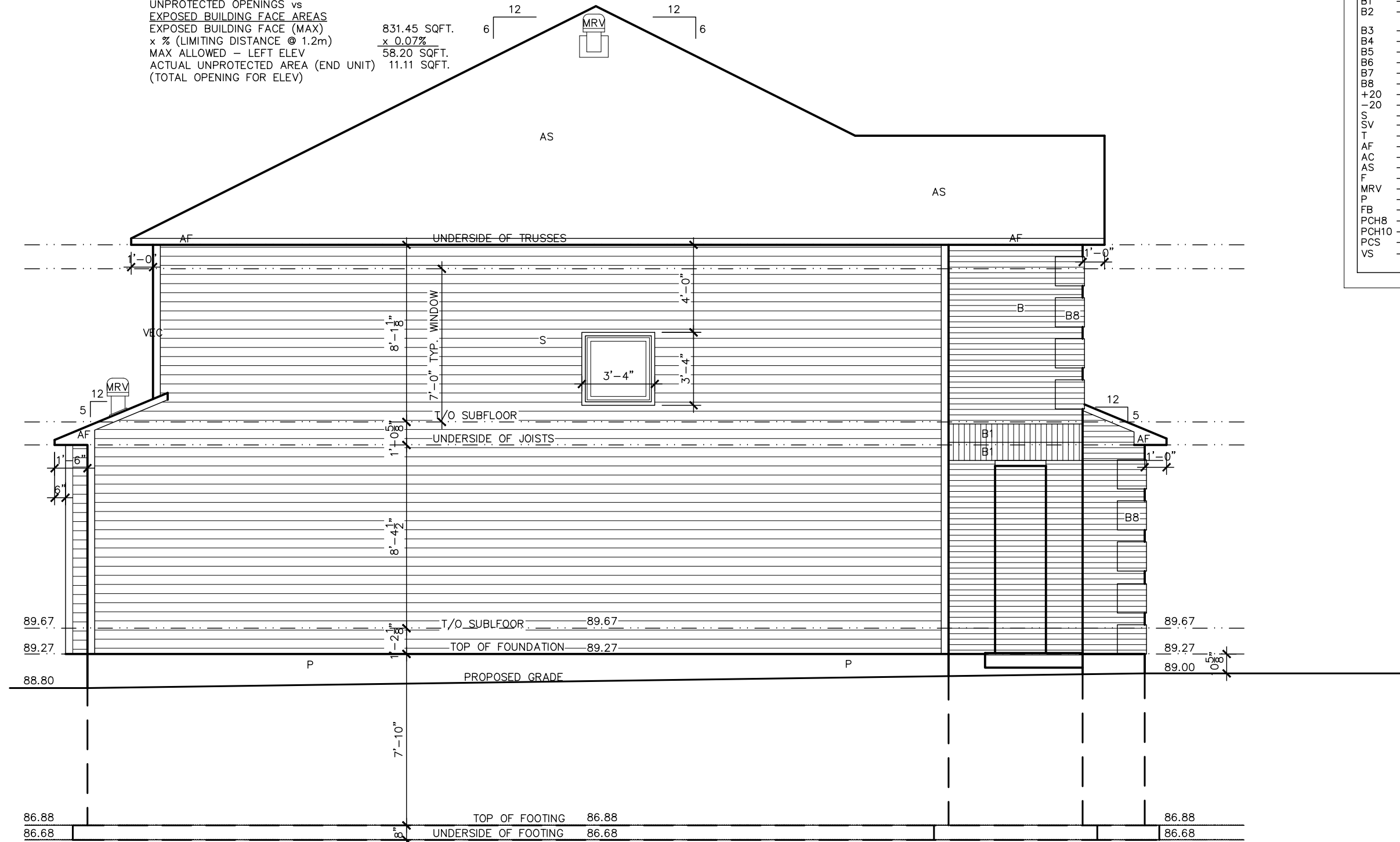
I, DANIEL GUERIN, HAVE REVIEWED THE FOLLOWING DOCUMENTS AND TAKE RESPONSIBILITY FOR THE DESIGN ACTIVITIES RELATING TO HOUSE AND SMALL BUILDINGS.

- PERSONAL BCIN #19896
- TARIION REGISTRATION NUMBER #611

** SEE SIGNED SCHEDULE 1: DESIGNER INFORMATION FORM **

1141-1151 BRASSEUR CRESCENT			
TITLE: REAR ELEVATION			
ACAD FILE:		SCALE: 3/32"=1'-0"	
2. AS PER STRUCTURAL		09/22/21	AB
1. DRAWINGS FOR JOIST AND TRUSS LAYOUTS		09/07/21	AB
NO	DESCRIPTION	DATE	BY
			A-2

UNPROTECTED OPENINGS vs
 EXPOSED BUILDING FACE AREAS
 EXPOSED BUILDING FACE (MAX)
 x % (LIMITING DISTANCE @ 1.2m) 831.45 SQFT.
 MAX ALLOWED - LEFT ELEV 58.20 SQFT.
 ACTUAL UNPROTECTED AREA (END UNIT) 11.11 SQFT.
 (TOTAL OPENING FOR ELEV)



EXTERIOR FINISH LEGEND	
B	- BRICK (MAIN)
B1	- BRICK SOLDIER COURSE (ACCENT)
B2	- BRICK SOLDIER COURSE (ACCENT) 20mm PROUD
B3	- BRICK SLEEPER COURSE
B4	- STACK BOND (ACCENT)
B5	- BRICK SILL (ACCENT)
B6	- BRICK ROW LOCK (ACCENT)
B7	- BRICK CORBELLING
B8	- BRICK QUOIN 20mm PROUD
+20	- BRICK 20mm PROUD
-20	- BRICK RECESSED 20mm
S	- SIDING (HORIZONTAL)
SV	- SIDING (VERTICAL)
T	- TRIM 200mm COVE SIDING
AF	- ALUMINUM FASCIA
AC	- ALUMINUM CLADDING
AS	- ASPHALT SHINGLES
F	- FLASHING
MRV	- MAXIMUM ROOF VENT
P	- PARGING
FB	- FRIEZE BOARD
PCH8	- 8" PRE-CAST CONCRETE HEADER
PCH10	- 10" PRE-CAST CONCRETE HEADER
PCS	- PRE-CAST CONCRETE SILL
VS	- VINYL SHAKE

1151
 BRASSEUR
 CRESCENT

NOTE:
 1. WOOD FRAMING IN CONTACT WITH CONC.
 SHALL BE PROTECTED BY 0.15mm POLY

2. TRANSFER ALL POST LOADS ABOVE TO CONC.
 OR STEEL BM. WITH SOLID BLOCKING
 EQUAL DIMENSION OF SUPPORTING
 MEMBER.

THIS DRAWING IS TO BE USED IN CONJUNCTION WITH
 SCHEDULE B-1A AND MAY SHOW ONLY SOME OF THE CHANGES
 DETAILED ON THAT DOCUMENT. SHOULD THE DRAWINGS NOT
 SHOW ALL ITEMS CONTAINED ON A SCHEDULE OR MISS OTHER
 ITEMS ALTOGETHER, THE SCHEDULE IS CONSIDERED THE
 GOVERNING DOCUMENT.
 FLOORS CONT

I, DANIEL GUERIN, HAVE REVIEWED THE FOLLOWING DOCUMENTS
 AND TAKE RESPONSIBILITY FOR THE DESIGN ACTIVITIES RELATING
 TO HOUSE AND SMALL BUILDINGS.

- PERSONAL BCIN #19896
 - TARIION REGISTRATION NUMBER #611
 ** SEE SIGNED SCHEDULE 1: DESIGNER INFORMATION FORM **

1141-1151 BRASSEUR CRESCENT

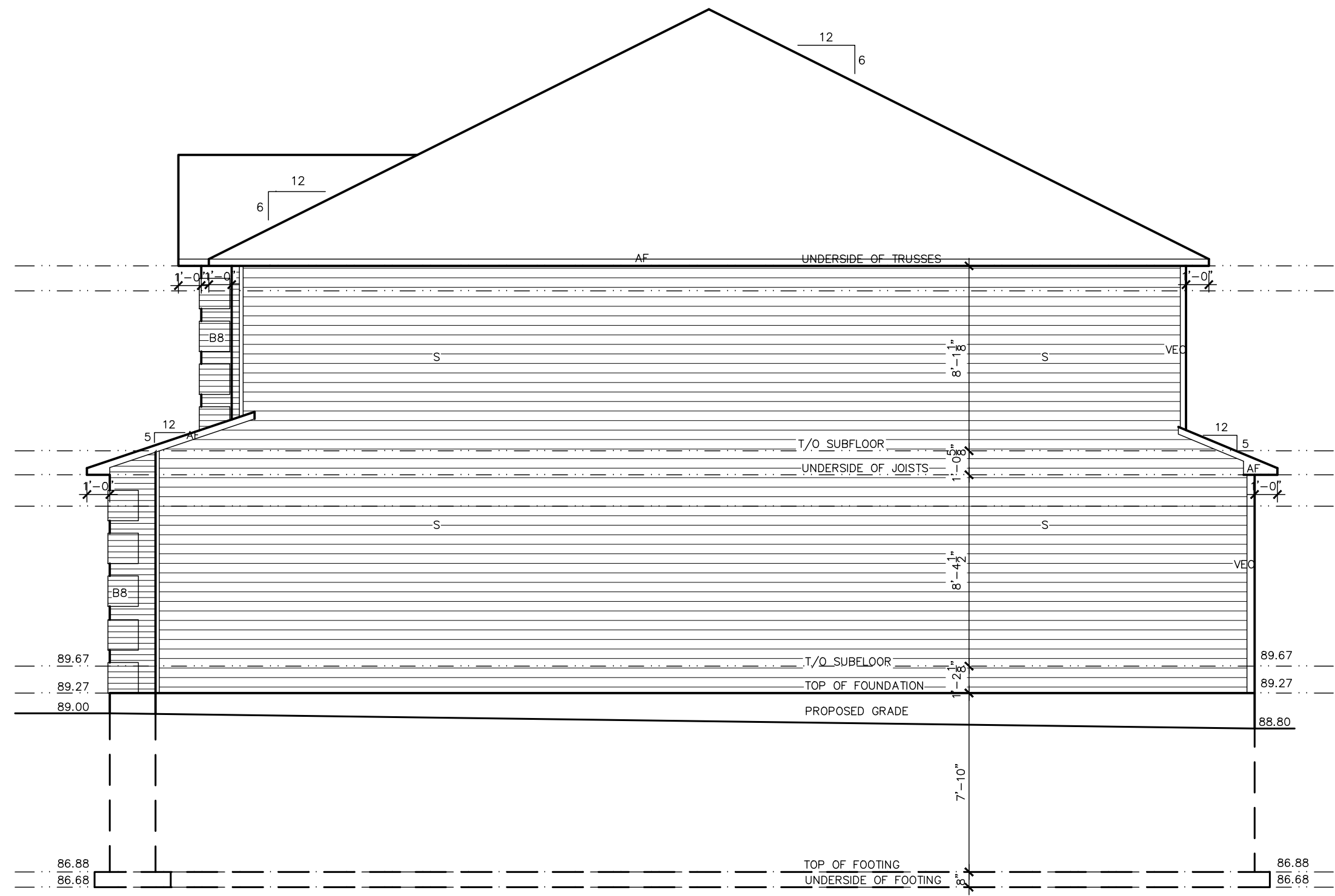


TITLE:
 LEFT ELEVATION

NO	DESCRIPTION	DATE	BY
2.	AS PER STRUCTURAL	09/22/21	AB
1.	DRAWINGS FOR JOIST AND TRUSS LAYOUTS	09/07/21	AB

ACAD FILE:	SCALE: 3/16" = 1'-0"
DWG.	A-3

EXTERIOR FINISH LEGEND	
B	- BRICK (MAIN)
B1	- BRICK SOLDIER COURSE (ACCENT)
B2	- BRICK SOLDIER COURSE (ACCENT) 20mm PROUD
B3	- BRICK SLEEPER COURSE
B4	- STACK BOND (ACCENT)
B5	- BRICK SILL (ACCENT)
B6	- BRICK ROW LOCK (ACCENT)
B7	- BRICK CORBELLING
B8	- BRICK QUOIN 20mm PROUD
+20	- BRICK 20mm PROUD
-20	- BRICK RECESSED 20mm
S	- SIDING (HORIZONTAL)
SV	- SIDING (VERTICAL)
T	- TRIM 200mm COVE SIDING
AF	- ALUMINUM FACIA
AC	- ALUMINUM CLADDING
AS	- ASPHALT SHINGLES
F	- FLASHING
MRV	- MAXIMUM ROOF VENT
P	- PARGING
FB	- FRIEZE BOARD
PCH8	- 8" PRE-CAST CONCRETE HEADER
PCH10	- 10" PRE-CAST CONCRETE HEADER
PCS	- PRE-CAST CONCRETE SILL
VS	- VINYL SHAKE



1141
BRASSEUR
CRESCENT

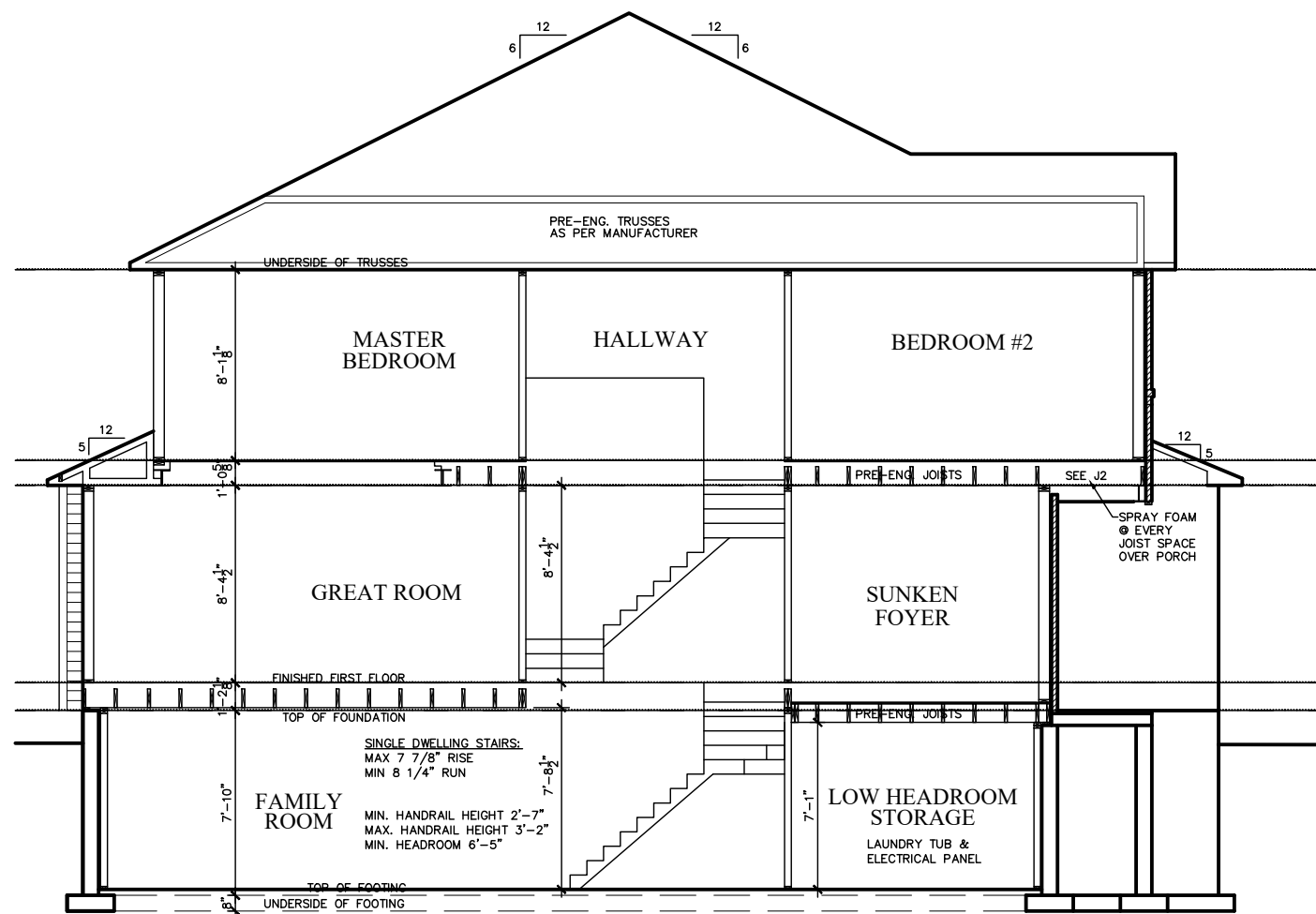
1141-1151 BRASSEUR CRESCENT

I, DANIEL GUERIN, HAVE REVIEWED THE FOLLOWING DOCUMENTS AND TAKE RESPONSIBILITY FOR THE DESIGN ACTIVITIES RELATING TO HOUSE AND SMALL BUILDINGS.

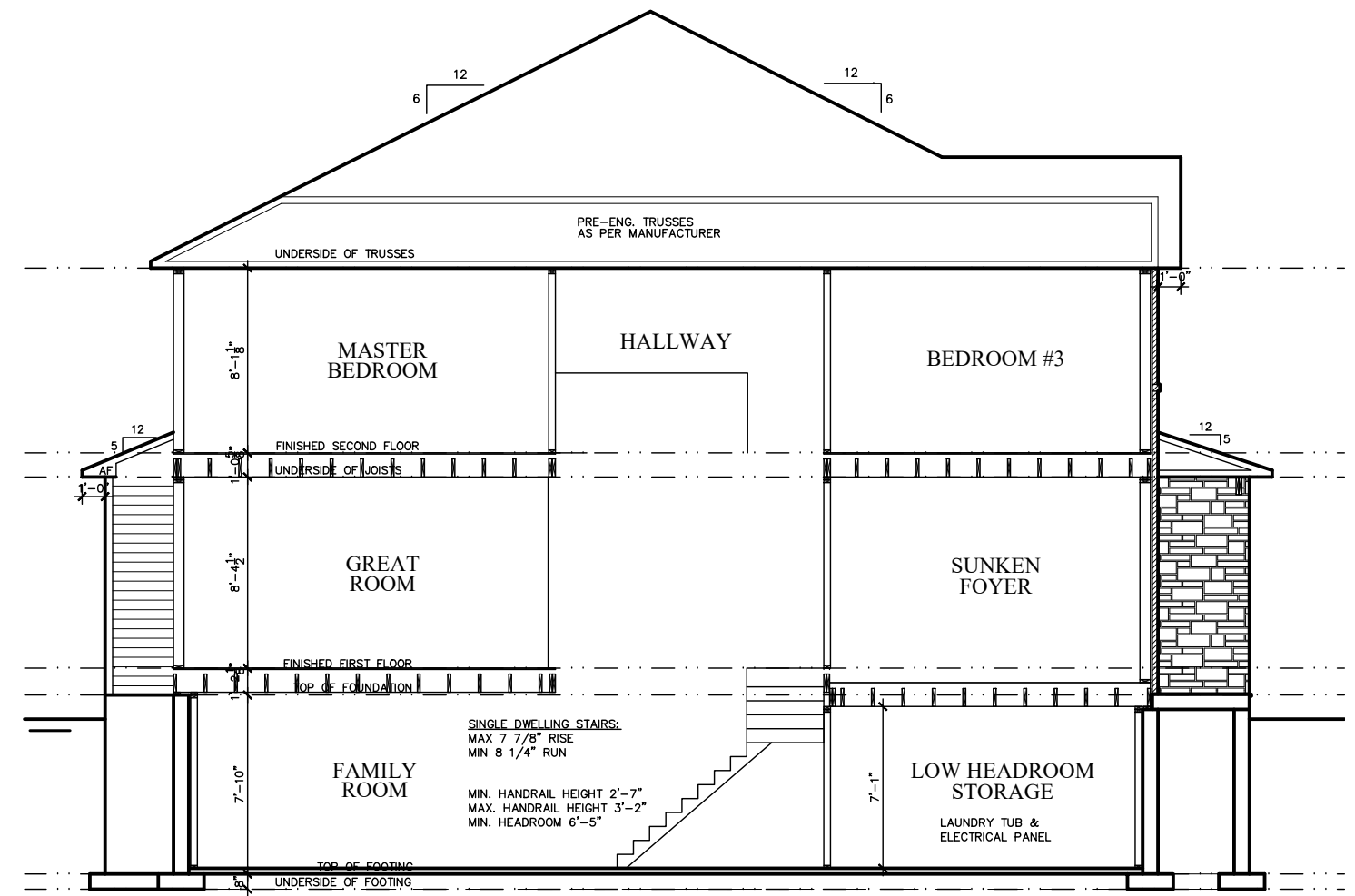
- PERSONAL BCIN #19896
- TARIION REGISTRATION NUMBER #611
** SEE SIGNED SCHEDULE 1: DESIGNER INFORMATION FORM **

NO	DESCRIPTION	DATE	BY
2.	AS PER STRUCTURAL	09/22/21	AB
1.	DRAWINGS FOR JOIST AND TRUSS LAYOUTS	09/07/21	AB

TITLE: RIGHT ELEVATION	
ACAD FILE:	SCALE: 3/16"=1'-0"
DWG.	A-4



1151 (1149, 1147, 1145, 1143 SIMILAR)
BRASSEUR
CRESCENT

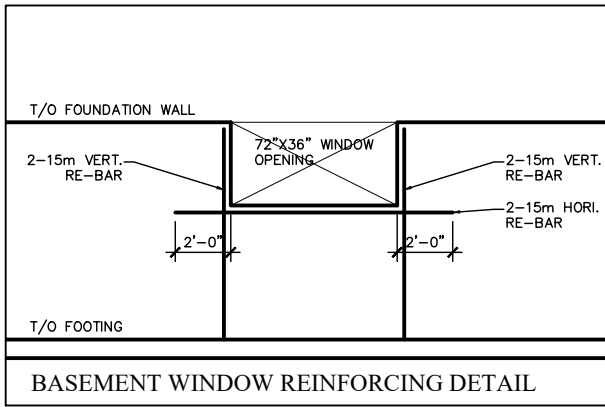
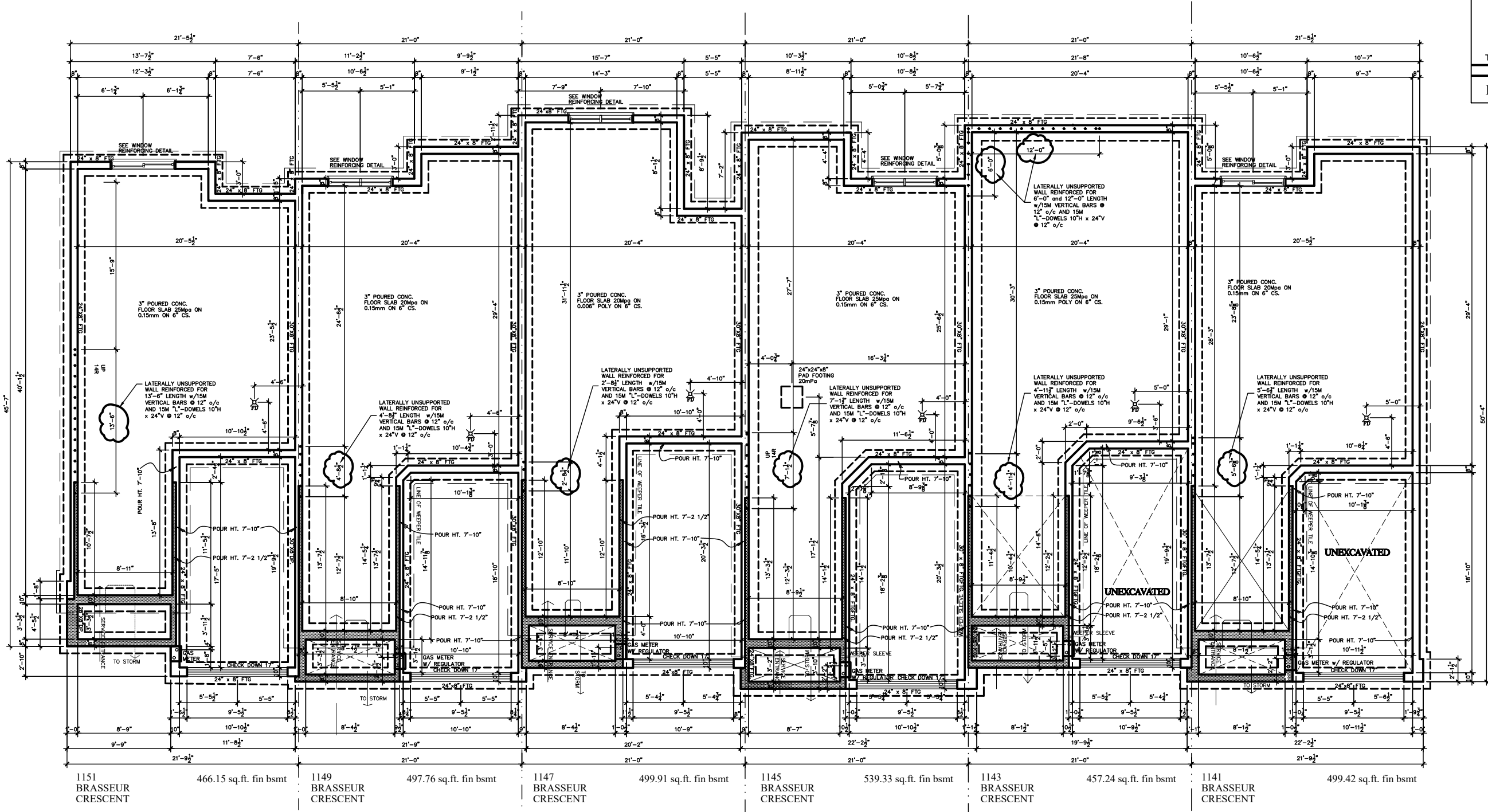


1141 (1143, 1145, 1147, 1149 SIMILAR)
BRASSEUR
CRESCENT

I, DANIEL GUERIN, HAVE REVIEWED THE FOLLOWING DOCUMENTS AND TAKE RESPONSIBILITY FOR THE DESIGN ACTIVITIES RELATING TO HOUSE AND SMALL BUILDINGS.

- PERSONAL BCIN #19896
- TARIION REGISTRATION NUMBER #611
- ** SEE SIGNED SCHEDULE 1: DESIGNER INFORMATION FORM **

1141-1151 BRASSEUR CRESCENT		
TITLE: CROSS SECTIONS		
ACAD FILE:		SCALE: 3/16"=1'-0"
2. AS PER STRUCTURAL		DATE: 09/22/21 BY: AB
1. DRAWINGS FOR JOIST AND TRUSS LAYOUTS		DATE: 09/07/21 BY: AB
NO	DESCRIPTION	DATE BY
		DWG. X-1



FOOTINGS DESIGNED FOR A MINIMUM SOIL BEARING CAPACITY OF 75kPa TO BE CONFIRMED BY GEOTECHNICAL ENGINEER.

I, DANIEL GUERIN, HAVE REVIEWED THE FOLLOWING DOCUMENTS AND TAKE RESPONSIBILITY FOR THE DESIGN ACTIVITIES RELATING TO HOUSE AND SMALL BUILDINGS.

- PERSONAL BCIN #19896
- TARIION REGISTRATION NUMBER #611

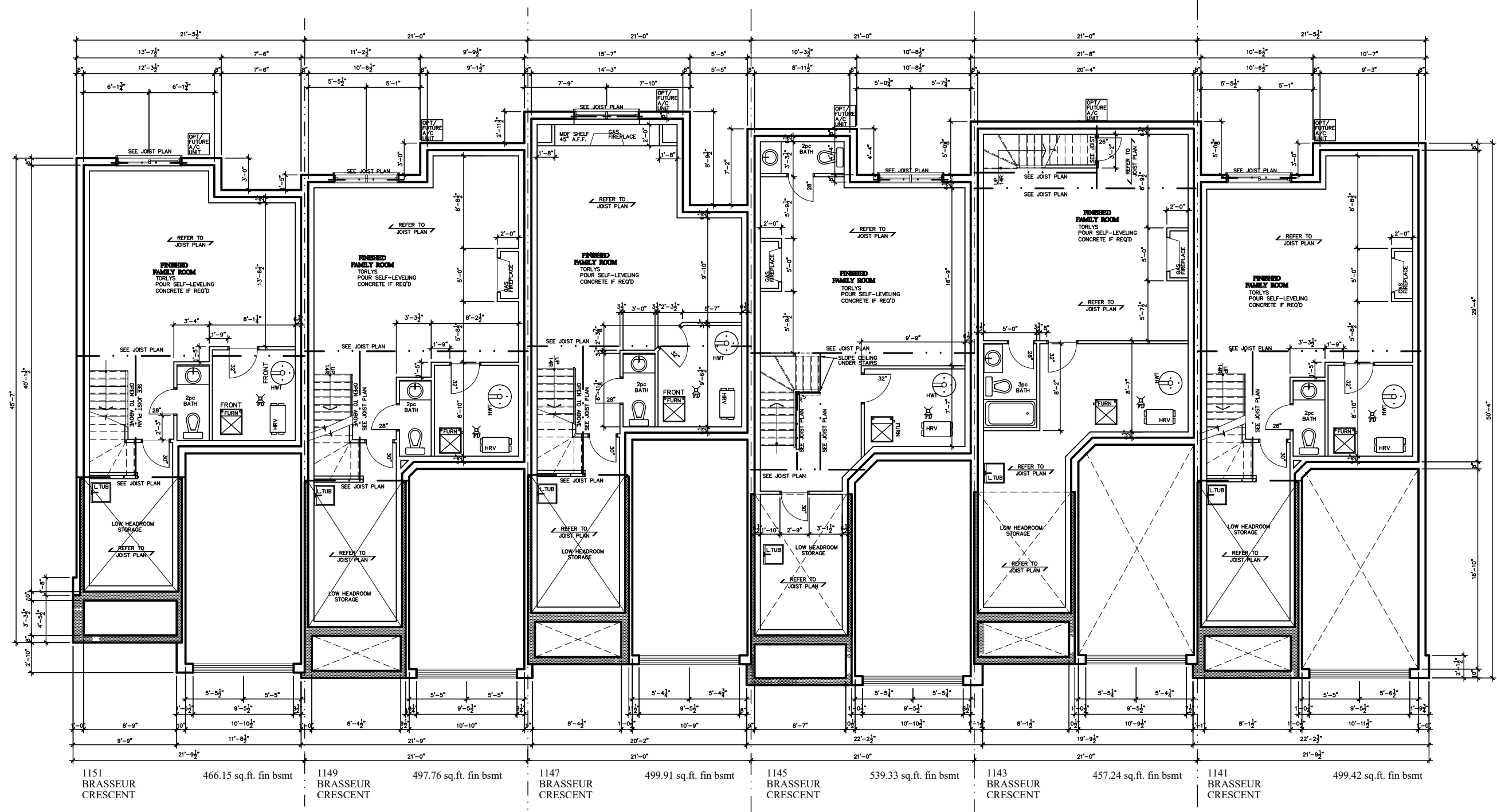
** SEE SIGNED SCHEDULE 1: DESIGNER INFORMATION FORM **

1141-1151 BRASSEUR CRESCENT

TITLE: FOUNDATION PLAN	
ACAD FILE:	SCALE: 3/32" = 1'-0"
2. AS PER STRUCTURAL	09/22/21 AB
1. DRAWINGS FOR JOIST AND TRUSS LAYOUTS	09/07/21 AB
NO DESCRIPTION	DATE BY

A-5

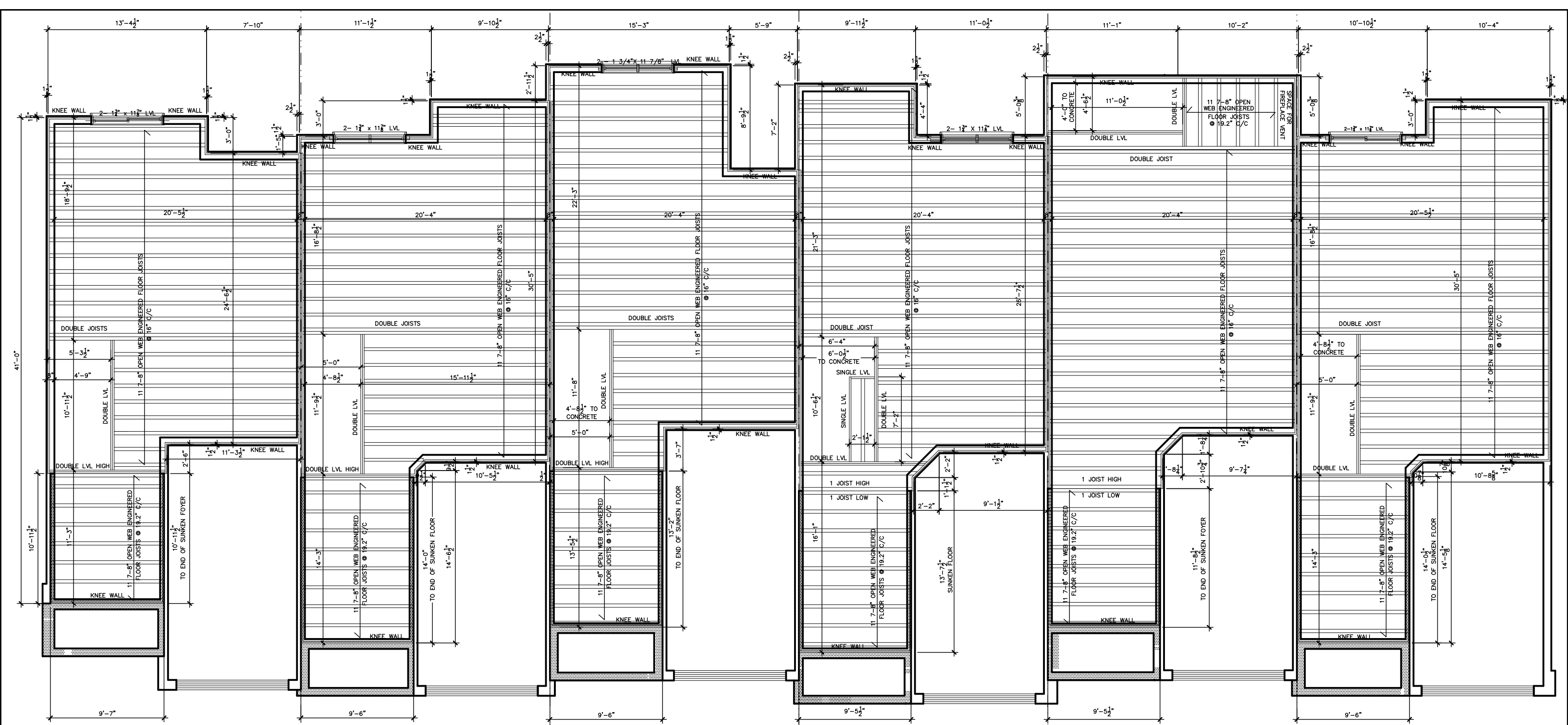
STEEL UNTEL		WOOD UNTEL		POSTS	
S1	L 90x90x6	L1	(2) 38x235 w/ 12.7 PLYWOOD SPACER	P1	75# STEEL TELEPOST
S2	L 100x90x8	L2	(2) 38x235	P2	(2) 38x89 or (2) 38x140 (1 JACK 1 KING)
S3	L 125x90x8	L3	(3) 38x235	P3	(3) 38x89 or (3) 38x140 (3 JACK 1 KING)
S4	L 125x90x8	L4	(3) 38x235	P4	(4) 38x89 or (4) 38x140 (4 JACK 1 KING)
S5	L 125x90x8	L5	(2) ROW OF 90mm SPIRAL @ 200 o/c	P5	(5) 38x89 or (5) 38x140 (5 JACK 1 KING)
S6	L 200x100x10	L6	(2) 45x240 w/ 2-12.7 PLYWOOD SPACER	P6	(6) 38x89 or (6) 38x140 (6 JACK 1 KING)
S7	L 150x100x10 (200mm BEARING)	L7	(2) 45x240 M.L.	P7	HSS 88.9x88.9x3.18 + 100x200x12 T&B PL.
				P14	HSS 89x89x4.8 + 100x200x12 T&B PL.
				P15	HSS 76.2x76.2x4.78 + 100x180x12 T&B PL.
				P16	HSS 76.2x76.2x4.78 + 130x130x12 T PL.
				P17	HSS 73 O.D. x4.8 + 100x180x12PL B PL.
					+ 130x60x10 T PL.
					(*) HSS 76.2x76.2x4.78 + 90x200x12 T&B PL.
					(*) HSS 76.2x76.2x4.78 + 90x200x12 T&B PL.
					(*) ALL FOOTINGS 600x200 DP, UNLESS NOTED
					SOLL. 100 KPA



NOTE:
 1. WOOD FRAMING IN CONTACT WITH CONC. SHALL BE PROTECTED BY 0.15mm POLY
 2. TRANSFER ALL POST LOADS ABOVE TO CONC. OR STEEL BM. WITH SOLID BLOCKING EQUAL DIMENSION OF SUPPORTING MEMBER.

I, DANIEL GUERIN, HAVE REVIEWED THE FOLLOWING DOCUMENTS AND TAKE RESPONSIBILITY FOR THE DESIGN ACTIVITIES RELATING TO HOUSE AND SMALL BUILDINGS.
 - PERSONAL BCIN #19896
 - TARIION REGISTRATION NUMBER #611
 ** SEE SIGNED SCHEDULE 1: DESIGNER INFORMATION FORM **

1141-1151 BRASSEUR CRESCENT			
TITLE: BASEMENT PLAN			
ACAD FILE:		SCALE: 3/32" = 1'-0"	
2. AS PER STRUCTURAL 09/22/21 AB		DWG.	
1. DRAWINGS FOR JOIST AND TRUSS LAYOUTS 09/07/21 AB		A-6	
NO DESCRIPTION	DATE	BY	



1151
BRASSEUR
CRESCENT

466.15 sq.ft. fin bsmt

1149
BRASSEUR
CRESCENT

497.76 sq.ft. fin bsmt

1147
BRASSEUR
CRESCENT

499.91 sq.ft. fin bsmt

1145
BRASSEUR
CRESCENT

539.33 sq.ft. fin bsmt

1143
BRASSEUR
CRESCENT

457.24 sq.ft. fin bsmt

1141
BRASSEUR
CRESCENT

499.42 sq.ft. fin bsmt

- NOTE:
- WOOD FRAMING IN CONTACT WITH CONC. SHALL BE PROTECTED BY 0.15mm POLY
 - TRANSFER ALL POST LOADS ABOVE TO CONC. OR STEEL BM. WITH SOLID BLOCKING EQUAL DIMENSION OF SUPPORTING MEMBER.

I, DANIEL GUERIN, HAVE REVIEWED THE FOLLOWING DOCUMENTS AND TAKE RESPONSIBILITY FOR THE DESIGN ACTIVITIES RELATING TO HOUSE AND SMALL BUILDINGS.

- PERSONAL BCIN #19896
 - TARIION REGISTRATION NUMBER #611
- ** SEE SIGNED SCHEDULE 1: DESIGNER INFORMATION FORM **

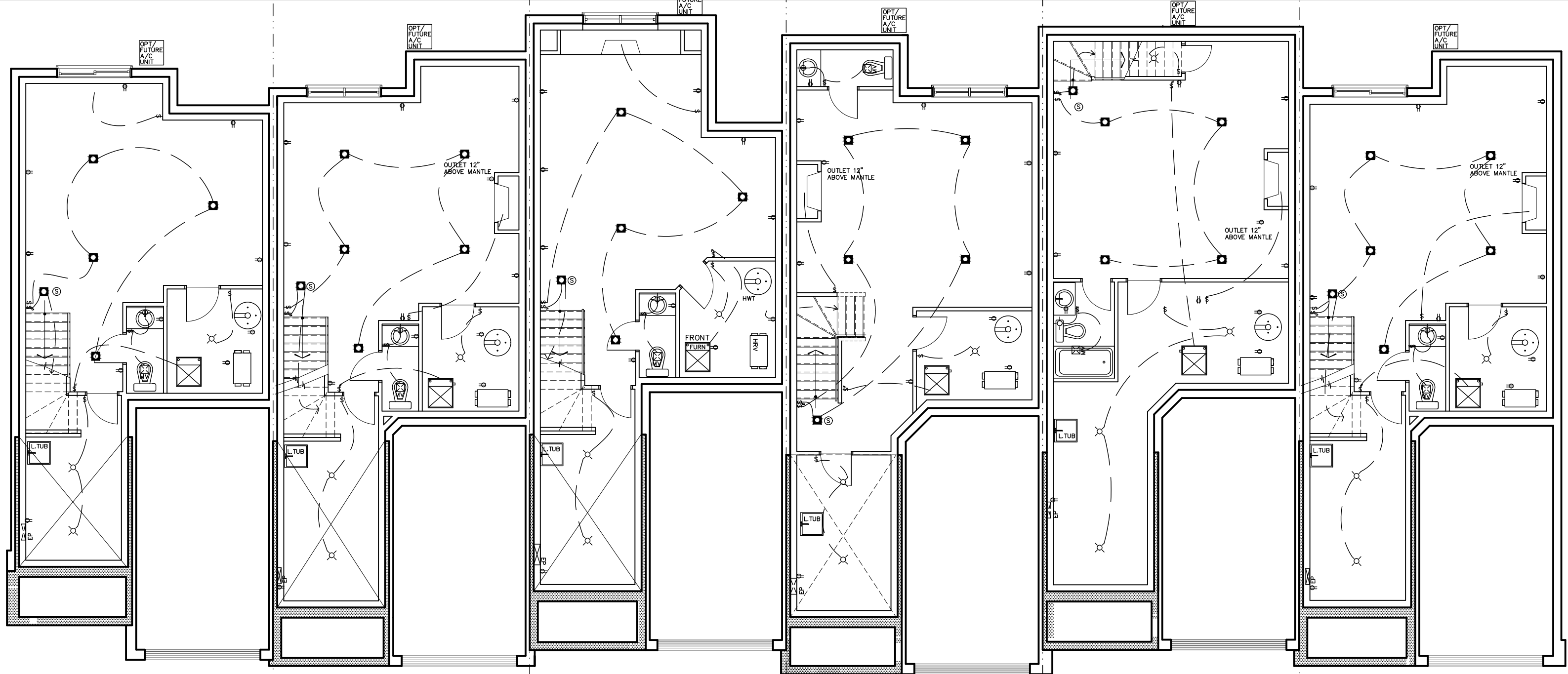
1141-1151 BRASSEUR CRESCENT



TITLE:
FIRST FLOOR JOIST PLAN

ACAD FILE: SCALE:
1/8" = 1'-0"

2. AS PER STRUCTURAL	09/22/21	AB
1. DRAWINGS FOR JOIST AND TRUSS LAYOUTS	09/07/21	AB
NO DESCRIPTION	DATE	BY



1151
BRASSEUR
CRESCENT
466.15 sq.ft. fin bsmt

1149
BRASSEUR
CRESCENT
497.76 sq.ft. fin bsmt

1147
BRASSEUR
CRESCENT
499.91 sq.ft. fin bsmt

1145
BRASSEUR
CRESCENT
539.33 sq.ft. fin bsmt

1143
BRASSEUR
CRESCENT
457.24 sq.ft. fin bsmt

1141
BRASSEUR
CRESCENT
499.42 sq.ft. fin bsmt

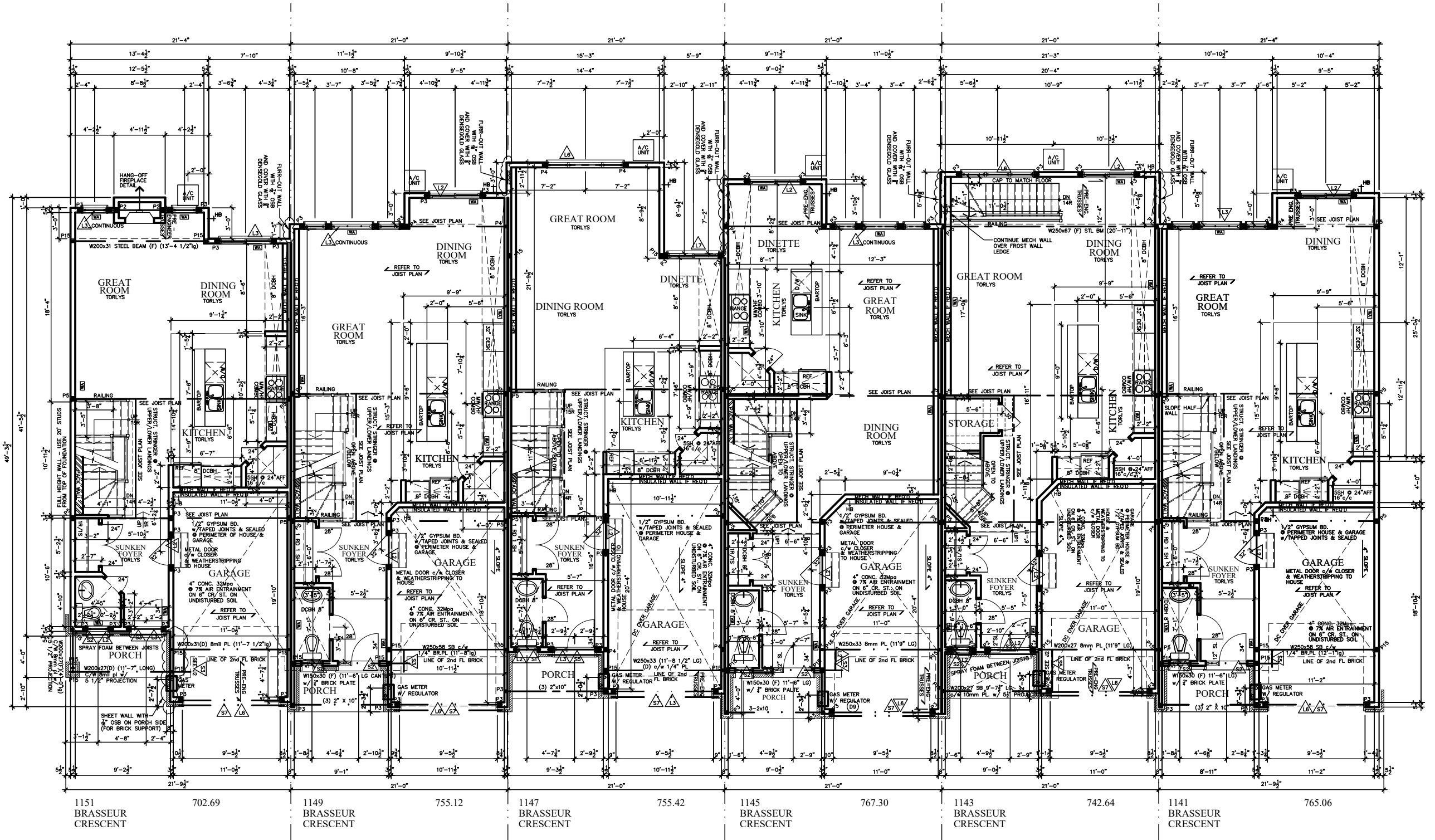
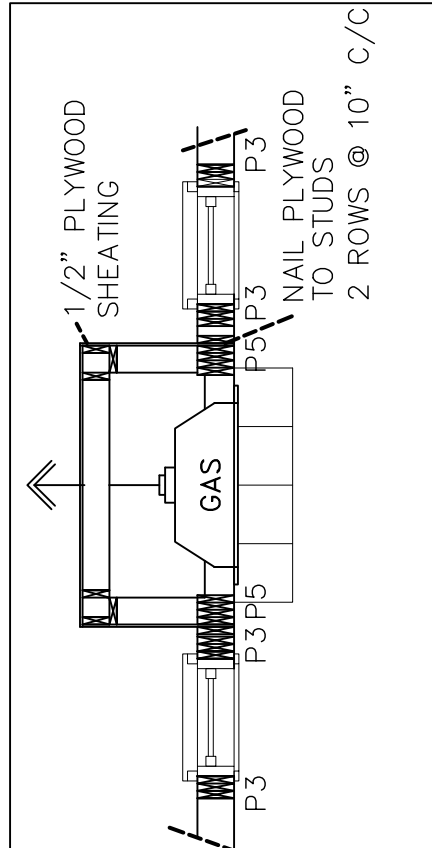
NOTE:
1. WOOD FRAMING IN CONTACT WITH CONC. SHALL BE PROTECTED BY 0.15mm POLY
2. TRANSFER ALL POST LOADS ABOVE TO CONC. OR STEEL BM. WITH SOLID BLOCKING EQUAL DIMENSION OF SUPPORTING MEMBER.

THIS DRAWING IS TO BE USED IN CONJUNCTION WITH SCHEDULE B-1A AND MAY SHOW ONLY SOME OF THE CHANGES DETAILED ON THAT DOCUMENT. SHOULD THE DRAWINGS NOT SHOW ALL ITEMS CONTAINED ON A SCHEDULE OR MISS OTHER ITEMS ALTOGETHER, THE SCHEDULE IS CONSIDERED THE GOVERNING DOCUMENT. FLOORS CONT

I, DANIEL GUERIN, HAVE REVIEWED THE FOLLOWING DOCUMENTS AND TAKE RESPONSIBILITY FOR THE DESIGN ACTIVITIES RELATING TO HOUSE AND SMALL BUILDINGS.
- PERSONAL BCIN #19896
- TARIION REGISTRATION NUMBER #611
** SEE SIGNED SCHEDULE 1: DESIGNER INFORMATION FORM **

1141-1151 BRASSEUR CRESCENT			
TITLE: BASEMENT ELECTRICAL PLAN			
ACAD FILE:		SCALE: 1/8" = 1'-0"	
2. AS PER STRUCTURAL	09/22/21	AB	DWG.
1. DRAWINGS FOR JOIST AND TRUSS LAYOUTS	09/07/21	AB	E-1
NO DESCRIPTION	DATE	BY	

HANG-ON FIREPLACE DETAIL



STRUCTURAL FRAMING SCHEDULE		
STEEL LINTEL	WOOD LINTEL	POSTS
S1 - L 90x90x6	L1 - (2) 38x235 w/ 12.7 PLYWOOD SPACER	P1 - 75# STEEL TELEPOST
S2 - L 90x90x8	L2 - (2) 38x235	P2 - (2) 38x89 or (2) 38x140 (1 JACK 1 KING)
S3 - L 100x90x8	L3 - (3) 38x235	P3 - (3) 38x89 or (3) 38x140 (2 JACK 1 KING)
S4 - L 125x90x8	L4 - (3) 38x235 w/ 2-12.7 PLYWOOD SPACER	P4 - (4) 38x89 or (4) 38x140 (2 JACK 1 KING)
S5 - L 125x90x10	L5 - 2 ROW OF 90mm SPIRAL @ 200 o/c	P5 - (5) 38x89 or (5) 38x140 (4 JACK 1 KING)
S6 - L 200x100x12	L6 - (3) 38x286 w/ 2-12.7 PLYWOOD SPACER	P6 - (6) 38x89 or (6) 38x140 (5 JACK 1 KING)
S7 - L 150x100x10 (200mm BEARING)	L7 - 2 ROW OF 90mm SPIRAL @ 200 o/c	P13 - HSS 88.9x88.9x3.18 + 100x200x12 T&B PL.
		P14 - HSS 89x89x4.8 + 100x200x12 T&B PL.
		P15 - HSS 76.2x76.2x4.78 + 100x180x12 T&B PL.
		P16 - HSS 76.2x76.2x4.78 + 130x130x12 T PL.
		P17 - HSS 73 O.D. x4.8 + 100x180x12 B PL.
		CS1 - HSS 76.2x76.2x4.78 + 90x200x12 T&B PL.
		(*) - 2-12# ANCH (WHERE ANCH PL. NOT USED)
		ALL FOOTINGS 600x200 DP. UNLESS NOTED
		SOIL: 100 KPA

I, DANIEL GUERIN, HAVE REVIEWED THE FOLLOWING DOCUMENTS AND TAKE RESPONSIBILITY FOR THE DESIGN ACTIVITIES RELATING TO HOUSE AND SMALL BUILDINGS.

- PERSONAL BCIN #19896
- TARIION REGISTRATION NUMBER #611

** SEE SIGNED SCHEDULE 1: DESIGNER INFORMATION FORM **

NOTE:

- WOOD FRAMING IN CONTACT WITH CONC. SHALL BE PROTECTED BY 0.15mm POLY
- TRANSFER ALL POST LOADS ABOVE TO CONC. OR STEEL BM. WITH SOLID BLOCKING EQUAL DIMENSION OF SUPPORTING MEMBER.

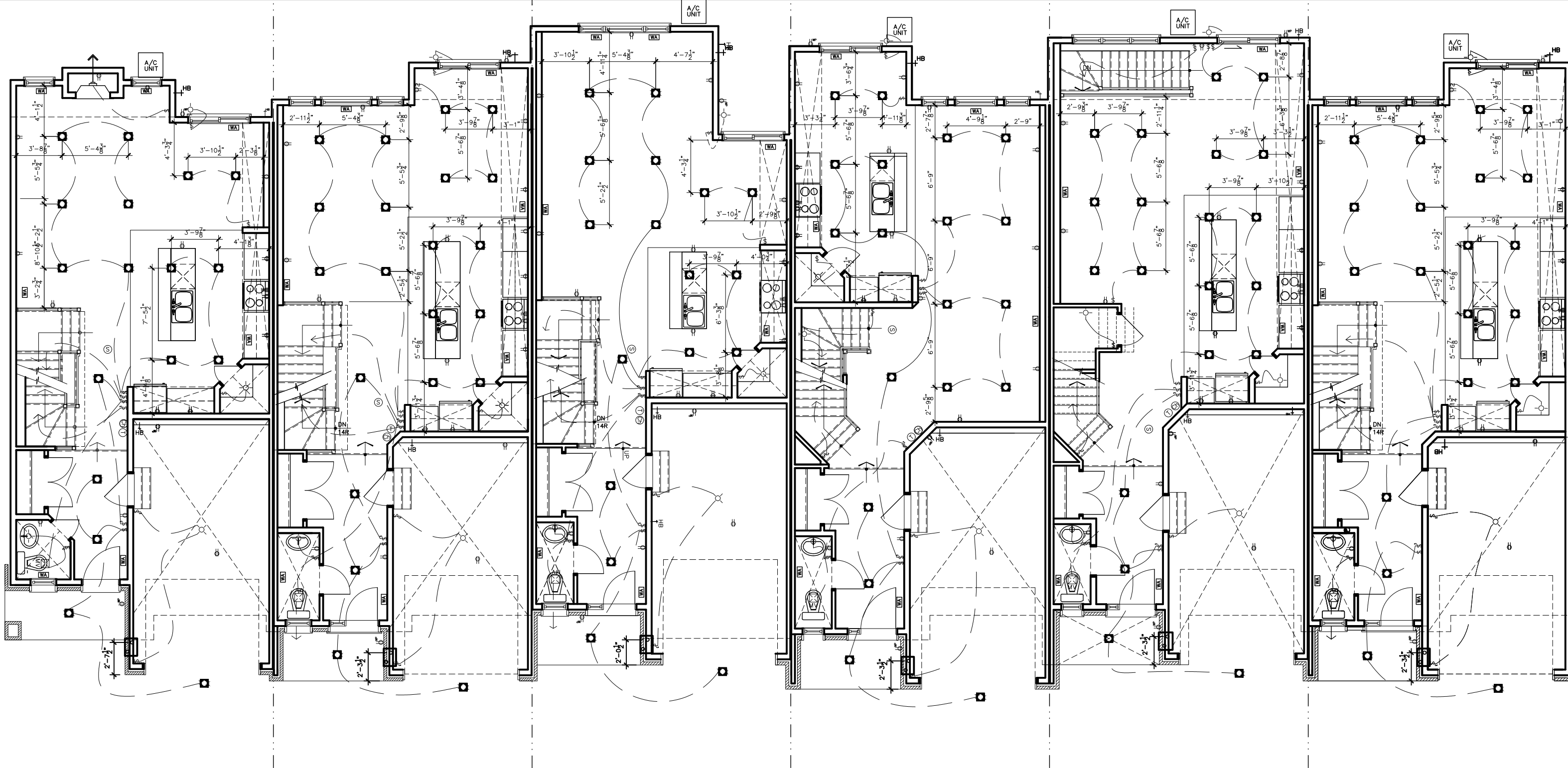
1141-1151 BRASSEUR CRESCENT

TITLE: FIRST FLOOR PLAN

NO	DESCRIPTION	DATE	BY
2.	AS PER STRUCTURAL	09/22/21	AB
1.	DRAWINGS FOR JOIST AND TRUSS LAYOUTS	09/07/21	AB

ACAD FILE: SCALE: 3/32" = 1'-0"

DWG. A-7



1151 BRASSEUR CRESCENT 702.69 1149 BRASSEUR CRESCENT 755.12 1147 BRASSEUR CRESCENT 755.42 1145 BRASSEUR CRESCENT 767.30 1143 BRASSEUR CRESCENT 742.64 1141 BRASSEUR CRESCENT 765.06

I, DANIEL GUERIN, HAVE REVIEWED THE FOLLOWING DOCUMENTS AND TAKE RESPONSIBILITY FOR THE DESIGN ACTIVITIES RELATING TO HOUSE AND SMALL BUILDINGS.

- PERSONAL BCIN #19896
- TARIION REGISTRATION NUMBER #611

** SEE SIGNED SCHEDULE 1: DESIGNER INFORMATION FORM **

1141-1151 BRASSEUR CRESCENT				
				TITLE: FIRST FLOOR ELECT. PLAN
			ACAD FILE:	SCALE: 1/8" = 1'-0"
2.	AS PER STRUCTURAL	09/22/21	AB	DWG.
1.	DRAWINGS FOR JOIST AND TRUSS LAYOUTS	09/07/21	AB	E-2
NO	DESCRIPTION	DATE	BY	

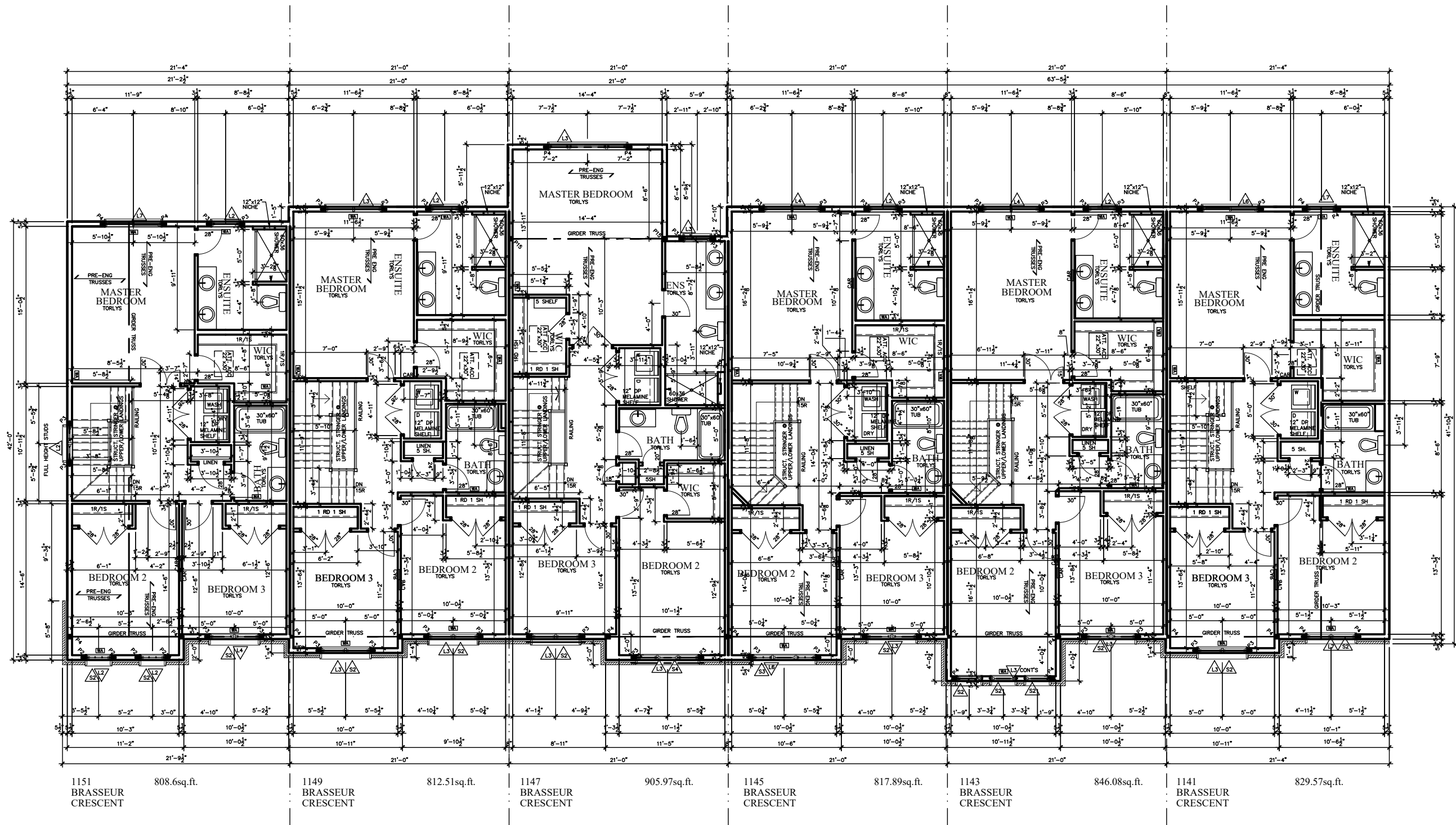


1151 BRASSEUR CRESCENT 702.69 1149 BRASSEUR CRESCENT 755.12 1147 BRASSEUR CRESCENT 755.42 1145 BRASSEUR CRESCENT 767.30 1143 BRASSEUR CRESCENT 742.64 1141 BRASSEUR CRESCENT 765.06

NOTE:
 1. WOOD FRAMING IN CONTACT WITH CONC. SHALL BE PROTECTED BY 0.15mm POLY
 2. TRANSFER ALL POST LOADS ABOVE TO CONC. OR STEEL BM. WITH SOLID BLOCKING EQUAL DIMENSION OF SUPPORTING MEMBER.

I, DANIEL GUERIN, HAVE REVIEWED THE FOLLOWING DOCUMENTS AND TAKE RESPONSIBILITY FOR THE DESIGN ACTIVITIES RELATING TO HOUSE AND SMALL BUILDINGS.
 - PERSONAL BCIN #19896
 - TARIION REGISTRATION NUMBER #611
 ** SEE SIGNED SCHEDULE 1: DESIGNER INFORMATION FORM **

1141-1151 BRASSEUR CRESCENT		Valecraft Home Ltd.	
		TITLE: SECOND FLOOR JOIST PLAN	
		ACAD FILE:	SCALE: 1/8" = 1'-0"
2. AS PER STRUCTURAL	09/22/21	AB	DWG.
1. DRAWINGS FOR JOIST AND TRUSS LAYOUTS	09/07/21	AB	
NO DESCRIPTION	DATE	BY	



STRUCTURAL FRAMING SCHEDULE			
STEEL LINTEL	WOOD LINTEL	POSTS	
S1 - L 90x90x6	L1 - (2)38x235 w/ 12.7 PLYWOOD SPACER	P1 - 75# STEEL TELEPOST	P15 - HSS 76.2x76.2x4.78 + 100x180x12 T&B PL. (*)
S2 - L 90x90x8	L2 - (2)38x235	P2 - (2)38x89 or (2)38x140 (1 JACK 1 KING)	P16 - HSS 76.2x76.2x4.78 + 130x130x12 T PL. (*)
S3 - L 100x90x8	L3 - (3)38x235	P3 - (3)38x89 or (3)38x140 (2 JACK 1 KING)	P17 - HSS 73 O.D. x4.8 + 100x180x12PL B PL. (*)
S4 - L 125x90x8	L4 - (3)38x235 w/ 2-12.7 PLYWOOD SPACER	P4 - (4)38x89 or (4)38x140 (3 JACK 1 KING)	CS1 - HSS 76.2x76.2x4.78 + 90x200x12 T&B PL. (*)
S5 - L 125x90x10	L5 - (3)38x286 w/ 2-12.7 PLYWOOD SPACER	P5 - (5)38x89 or (5)38x140 (4 JACK 1 KING)	(*) - 2-12# ANCH (WHERE ANCH PL. NOT USED)
S6 - L 200x100x12	L6 - (2)45x240 M.L	P6 - (6)38x89 or (6)38x140 (5 JACK 1 KING)	ALL FOOTINGS 600x200 DP. UNLESS NOTED
S7 - L 150x100x10 (200mm BEARING)	L7 - (3)45x240 M.L	P13 - HSS 88.9x88.9x3.18 + 100x200x12 T&B PL. (*)	SOIL: 100 KPA
		P14 - HSS 89x89x4.8 + 100x200x12 T&B PL. (*)	

I, DANIEL GUERIN, HAVE REVIEWED THE FOLLOWING DOCUMENTS AND TAKE RESPONSIBILITY FOR THE DESIGN ACTIVITIES RELATING TO HOUSE AND SMALL BUILDINGS.

- PERSONAL BCIN #19896
- TARIION REGISTRATION NUMBER #611

** SEE SIGNED SCHEDULE 1: DESIGNER INFORMATION FORM **

TRANSFER ALL POST LOADS ABOVE TO CONC. OR STEEL BM. WITH SOLID BLOCKING EQUAL DIMENSION OF SUPPORTING MEMBER.

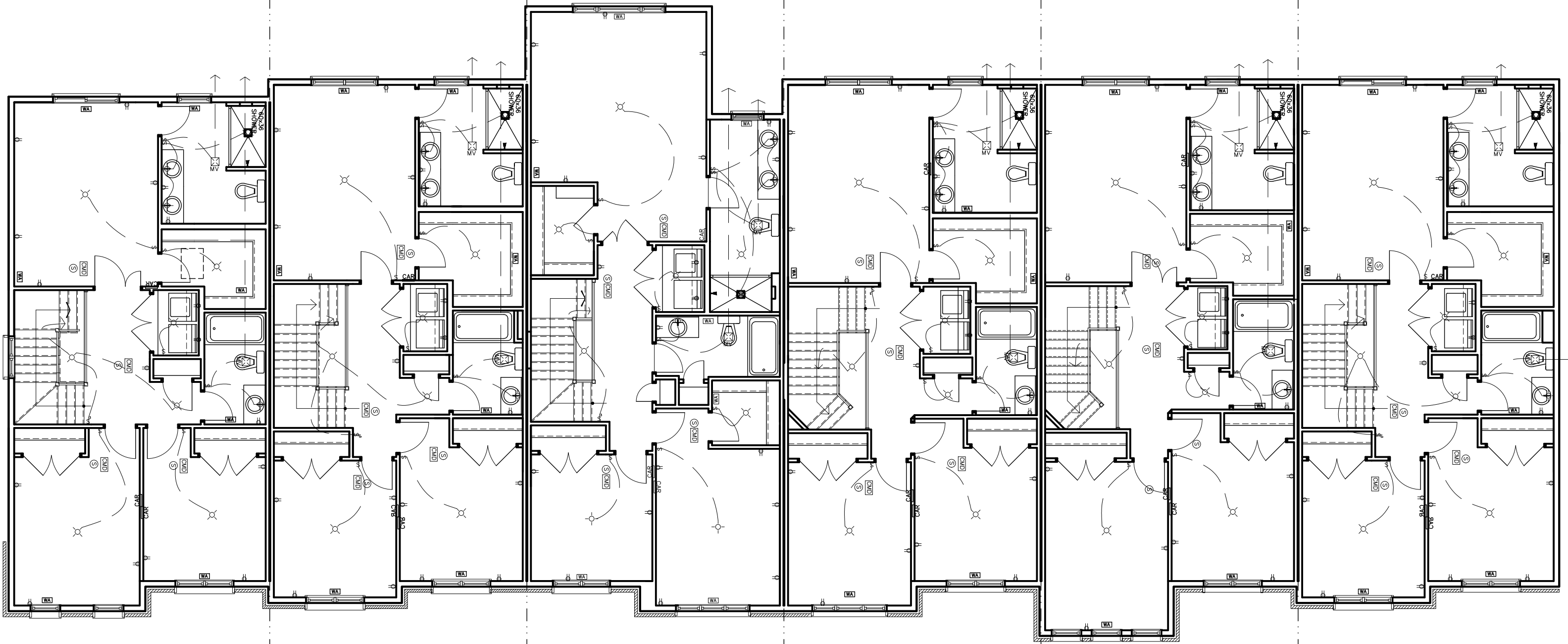
1141-1151 BRASSEUR CRESCENT

TITLE: SECOND FLOOR PLAN

ACAD FILE:	DATE:	BY:
2. AS PER STRUCTURAL	09/22/21	AB
1. DRAWINGS FOR JOIST AND TRUSS LAYOUTS	09/07/21	AB
NO DESCRIPTION	DATE	BY

SCALE: 3/32" = 1'-0"

DWG. A-8



1151
BRASSEUR
CRESCENT
808.6sq.ft.

1149
BRASSEUR
CRESCENT
812.51sq.ft.

1147
BRASSEUR
CRESCENT
905.97sq.ft.

1145
BRASSEUR
CRESCENT
817.89sq.ft.

1143
BRASSEUR
CRESCENT
846.08sq.ft.

1141
BRASSEUR
CRESCENT
829.57sq.ft.

I, DANIEL GUERIN, HAVE REVIEWED THE FOLLOWING DOCUMENTS AND TAKE RESPONSIBILITY FOR THE DESIGN ACTIVITIES RELATING TO HOUSE AND SMALL BUILDINGS.

- PERSONAL BCIN #19896
 - TARIION REGISTRATION NUMBER #611
- ** SEE SIGNED SCHEDULE 1: DESIGNER INFORMATION FORM **

1141-1151 BRASSEUR CRESCENT



TITLE:
SECOND ELECT FLOOR PLAN

NO	DESCRIPTION	DATE	BY
2.	AS PER STRUCTURAL	09/22/21	AB
1.	DRAWINGS FOR JOIST AND TRUSS LAYOUTS	09/07/21	AB

ACAD FILE:	SCALE: 1/8" = 1'-0"
DWG.	E-3