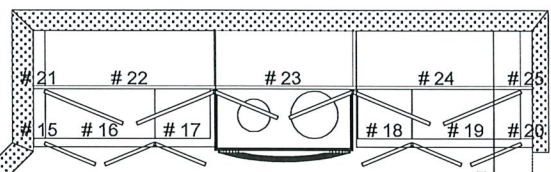
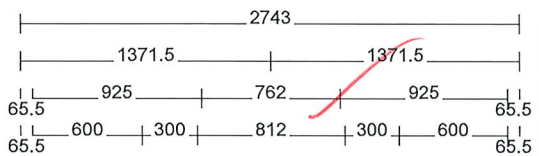


CLIENT: VALECRAFT		LOT:PST6-D18	
ADDR.: 160 STANLEY REV, ,			
SL #: 1082344			
Phone:	Mobile:	OUT BY: AL	DATE: 27/04/22
Email :		PST6-D18	

* These plans are intended for production of cabinets ONLY. Potvin is not liable if they are used for other purposes.
 * Construction lines on plans are subjective and are drawn for representation only. Their dimensions are approximate and may vary due to site conditions.
 * Appliances in elevations and plans are generic templates and may not reflect actual selections.

PG#
1 of 3
 Sheet 1

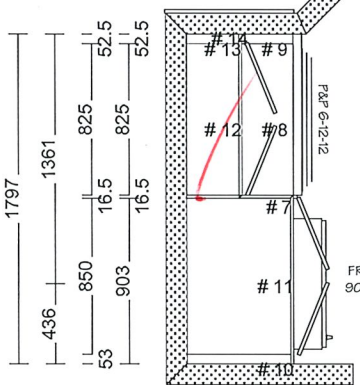


OPT. KITCHEN #1
 1016mm UPPERS
 INSTALL CABINETS 1428mm FROM FLOOR

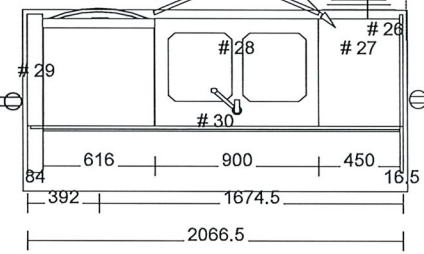
TOP DRAWER SHORTER FOR PLUG BOX

Room Name	OPT. KITCHEN #1
COUNTERTOPS	QUARTZ BY OTHERS
FINISH	BirGunstock (S)
HANDLES	81092-195
DOOR STYLE	basedoor:CAPE COD BirGunstock UpperDoor:CAPE COD BirGunstock Drawer:CAPE COD DRAWER BirGunstock
DRAWER GUIDE	AXIAL Richelieu
DOOR HINGE STYLE	SOFTCLOSE HINGES
Construction	(A)Potvin 32mm
CROWN MLDG	Finished BulkHead 102 BirGunstock
LIGHT VALANCE	SHAKER STYLE VALANCE BirGunstock

All Cabinets				
No	Name	Width	Height	Depth
0	Refrigerator RH	711	1695.5	800
0	Electric range	762	1118	716
0	DISHWASHER	616	883	587
0	Double W/Faucet/gray	762	101.5	457
7	FGABLE	16.5	2444	609
8	LC 825 PP 6-12-12	825	883	587
9	Lc Filler	52.5	883	587
10	UC Filler	53	589	587
11	UC850/589/587 Fridge	850	589	587
12	UC825/1016	825	1016	302
13	UC Filler	52.5	1016	302
14	DW FILLER T1S	711	102	19
15	Lc Filler	65.5	883	587
16	LC 600	600	883	587
17	LC 300	300	883	587
18	LC 300	300	883	587
19	LC 600	600	883	587
20	Lc Filler	65.5	883	587
21	UC Filler	65.5	1016	302
22	UC925/1016	925	1016	302
23	UC762/597 Stove w/Duct Box	762	597	302
24	UC925/1016	925	1016	302
25	UC Filler	65.5	1016	302
26	DW GABLE	16.5	883	864
27	LC450D SP	450	883	587
28	LC 900 SK USB	900	883	587
29	DW PLUG Right Std	84	883	864
30	ISLPANEL2	2033.5	883	16.5



FRIDGE OPENING:
 903mm X 1855mm

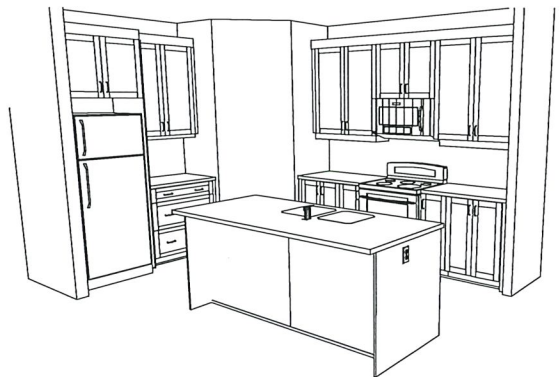


AS PER PLAN Cabinet Production

Valecraft approves this plan for production.
 Valecraft guarantees site dimensions (walls / windows / height / Clearances) and all plumbing, mechanical and electrical placements will suit this cabinet plan. Any cost associated with cabinet rework due to fitment issues will be Valecraft's responsibility.

AB
 Valecraft's approval

09/27/22
 date

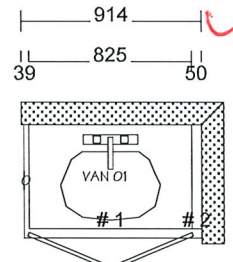


B:_Builder\A_Valecraft\ Production\PLACE ST-TOMAS EMBRUUN\POST6\BLOCK D\POST6-D18-STANLEY REV.P.dwg

CLIENT: VALECRAFT		LOT:PST6-D18	
ADDR.: 160 STANLEY REV, ,			
SL #: 1082344			
Phone:	Mobile:	OUT BY: AL	DATE: 27/04/22
Email :		PST6-D18	

* These plans are intended for production of cabinets ONLY. Potvin is not liable if they are used for other purposes.
 * Construction lines on plans are subjective and are drawn for representation only. Their dimensions are approximate and may vary due to site conditions.
 * Appliances in elevations and plans are generic templates and may not reflect actual selections.

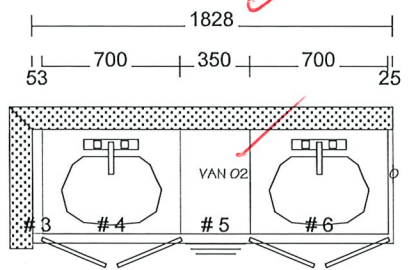
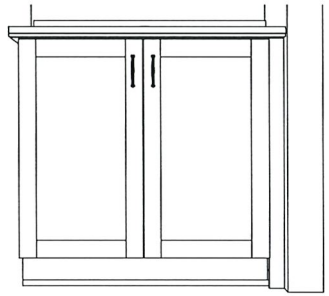
PG#
2 of 3
 Sheet 2



MAIN BATH 2ND FLOOR

All Cabinets				
No	Name	Width	Height	Depth
0	Single W/Faucet	508	51	432
1	V 825 SK	825	819	524
2	V Filler	50	819	524

Room Name	
MAIN BATH 2ND FLOOR	
COUNTERTOPS	
(A)RK7002T	
FINISH	
BirGraphite (S)	
HANDLES	
81092-195	
DOOR STYLE	
basedoor:CAPE COD	BirGraphite
UpperDoor:CAPE COD	BirGraphite
Drawer:CAPE COD DRAWER	BirGraphite
DRAWER GUIDE	
AXIAL Richelieu	
DOOR HINGE STYLE	
SOFTCLOSE HINGES	
Construction	
(A)Potvin 32mm	



OPT. 5PC ENSUITE 2ND FLOOR

All Cabinets				
No	Name	Width	Height	Depth
0	Single W/Faucet	508	51	432
0	Single W/Faucet	508	51	432
3	V Filler	53	819	524
4	V 700 SK	700	819	524
5	V350 3D	350	819	524
6	V 700 SK	700	819	524

Room Name	
OPT. 5PC ENSUITE 2ND FLOOR	
COUNTERTOPS	
(A)RK7002T	
FINISH	
BirGraphite (S)	
HANDLES	
81092-195	
DOOR STYLE	
basedoor:CAPE COD	BirGraphite
UpperDoor:CAPE COD	BirGraphite
Drawer:CAPE COD DRAWER	BirGraphite
DRAWER GUIDE	
AXIAL Richelieu	
DOOR HINGE STYLE	
SOFTCLOSE HINGES	
Construction	
(A)Potvin 32mm	



P1: Builder: Valecraft, Production: PLACE ST-THOMAS (EMBRUN) PST6-BLOCK D/PST6-D18, STANLEY REV. 1.2/1

CLIENT: VALECRAFT
 ADDR.: 160 STANLEY REV. ,
 SL #: 1082344
 Phone: Mobile:
 Email :

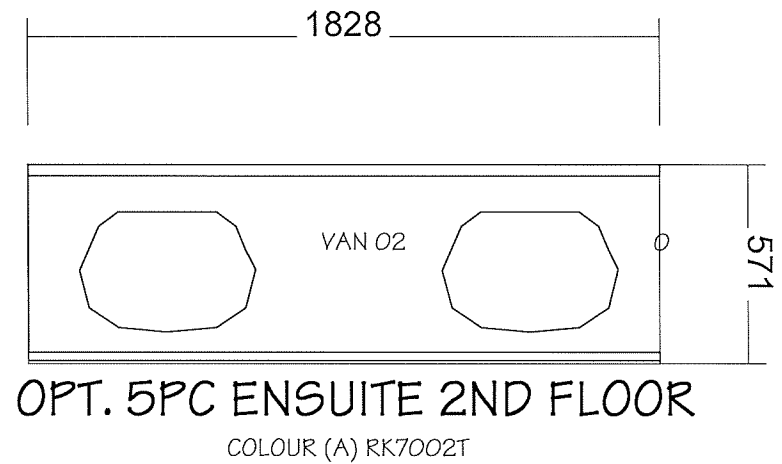
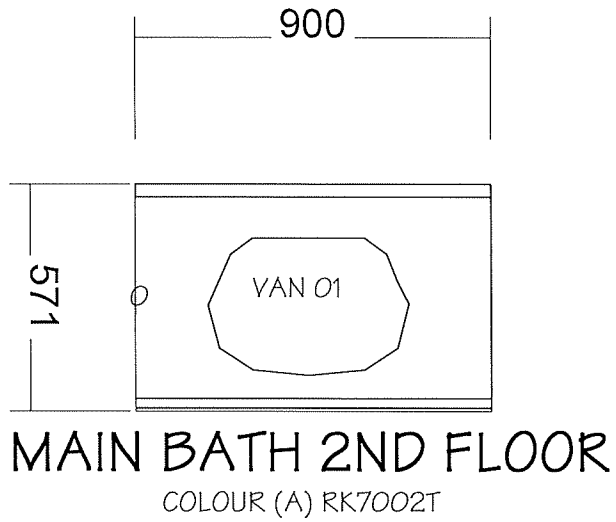
LOT:PST6-D18

OUT BY: AL DATE: 27/04/22
PST6-D18

* These plans are intended for production of cabinets ONLY. Potvin is not liable if they are used for other purposes.
 * Construction lines on plans are subjective and are drawn for representation only. Their dimensions are approximate and may vary due to site conditions.
 * Appliances in elevations and plans are generic templates and may not reflect actual selections.

PG#
3 of 3
 Sheet 3

potvin
 KITCHENS & CABINETS



P1: Builder's, Valecraft, Production/PLAGE 51-THOMAS (EMBRUN) PST6/D18, STANLEY 2/15/16-D18, 160 STANLEY REV., 2nd