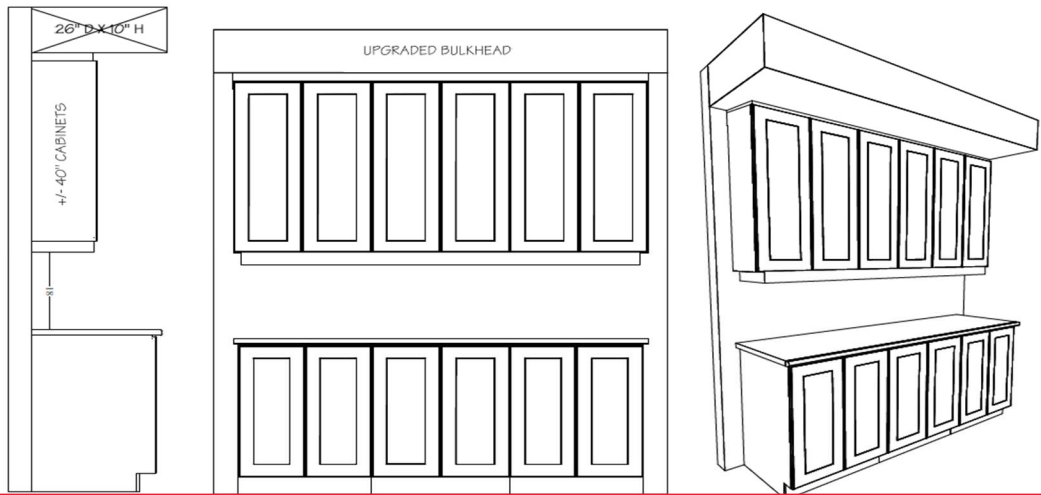




OPTIONAL KITCHEN CABINET CROWN MOULDING, FILLER &  
**UPGRADE BULKHEAD DETAILS**

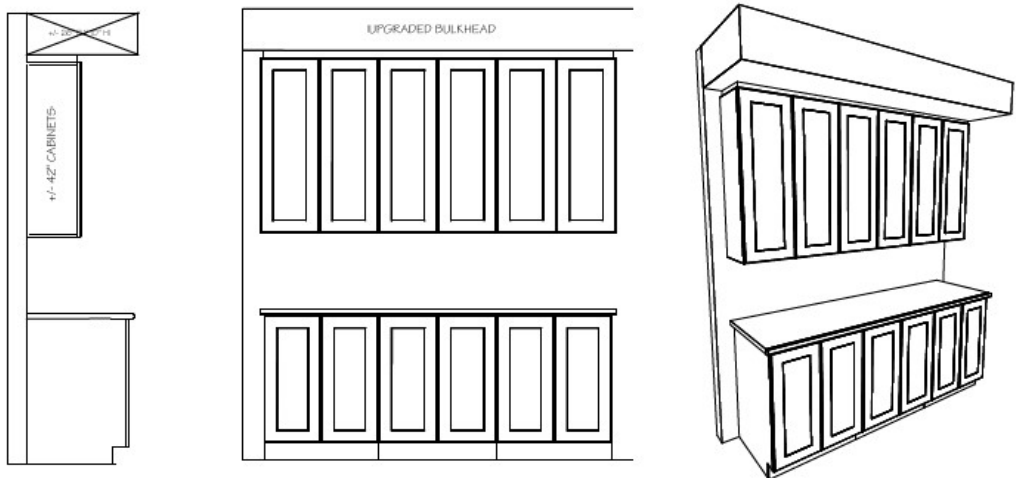
**UPC9-1C** Upgrade #: \_\_\_\_\_

- Includes upgrade to 40" uppers with filler detail & valence on upper kitchen cabinetry. Raised approx. 2" to upgraded bulkhead.



**UPC9-2B** Upgrade #: \_\_\_\_\_

- Includes upgrade to 42" uppers with filler detail on upper kitchen cabinetry to upgraded bulkhead.



**UPC9-3A** Upgrade #: \_\_\_\_\_

Includes upgrade to 40" uppers with crown moulding & filler detail on upper kitchen cabinetry to upgraded bulkhead.



Site: \_\_\_\_\_

Purchaser: \_\_\_\_\_

Plan No: \_\_\_\_\_

Lot: \_\_\_\_\_

Purchaser: \_\_\_\_\_

Date: \_\_\_\_\_