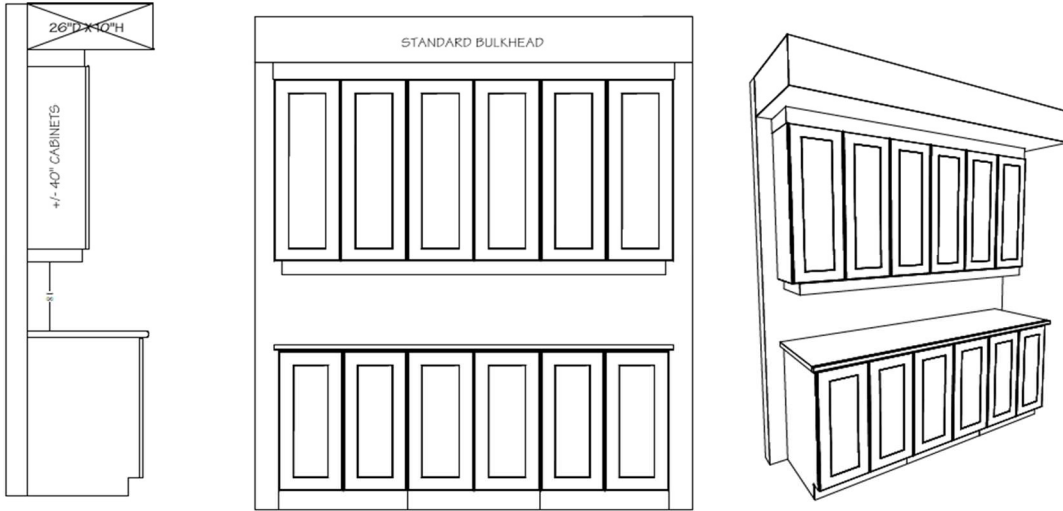


OPTIONAL KITCHEN CABINET CROWN MOULDING, FILLER & **STANDARD BULKHEAD** DETAILS

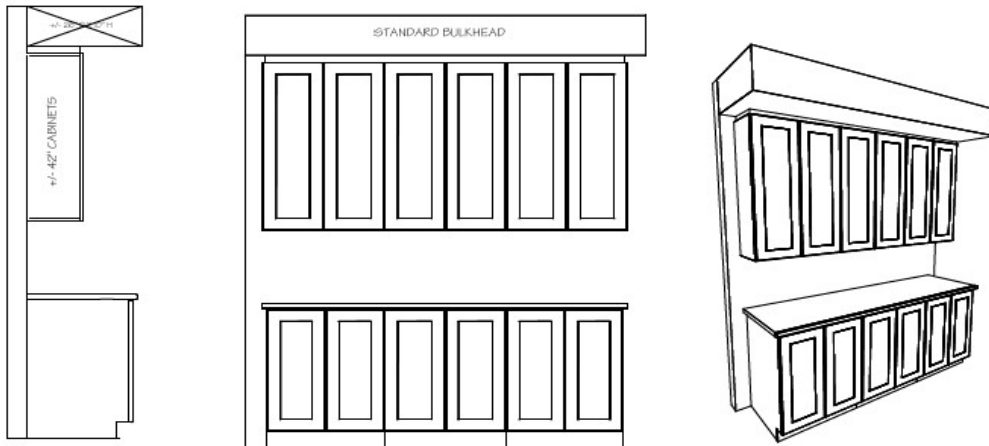
UPC9-1B Upgrade #: _____

- Includes upgrade to 40" uppers with filler detail & valence on upper kitchen cabinetry. Raised approx. 2" to standard bulkhead.



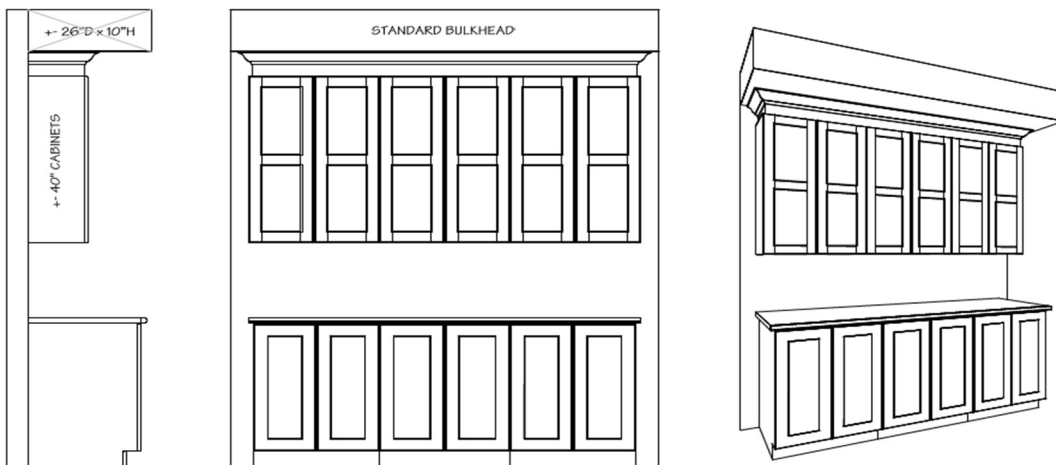
UPC9-2A Upgrade #: _____

- Includes upgrade to 42" uppers with filler detail on upper kitchen cabinetry to standard bulkhead.



UPC9-3B Upgrade #: _____

- Includes upgrade to 40" uppers with crown moulding & filler detail on upper kitchen cabinetry to standard bulkhead.



Site: _____ Purchaser: _____

Plan No: _____

Lot: _____ Purchaser: _____

Date: _____