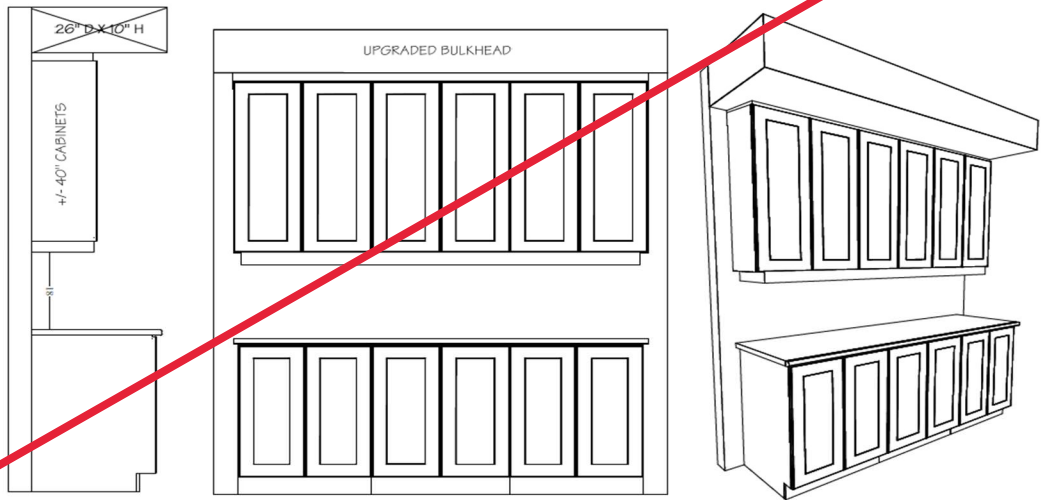


OPTIONAL KITCHEN CABINET CROWN MOULDING,  
FILLER & **UPGRADE** BULKHEAD DETAILS

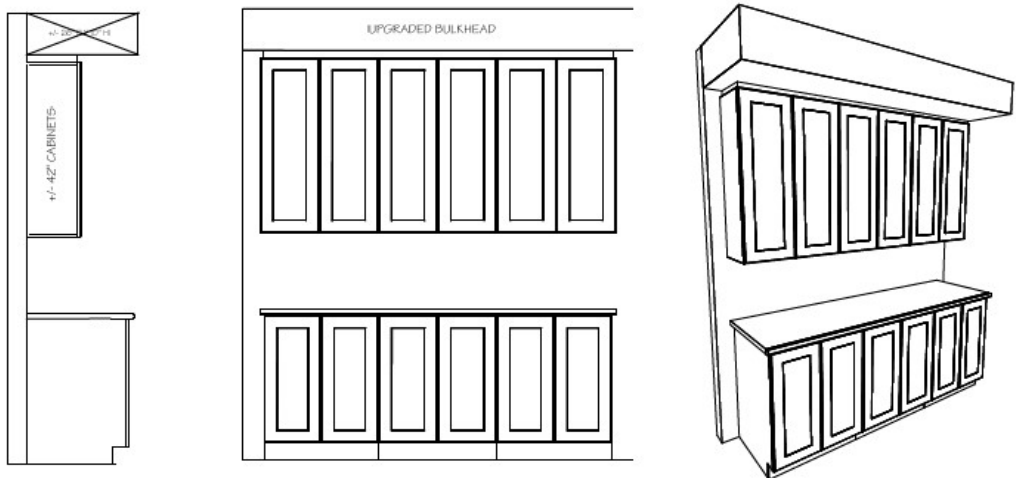
**UPC9-1C** Upgrade #: \_\_\_\_\_

- Includes upgrade to 40" uppers with filler detail & valence on upper kitchen cabinetry. Raised approx. 2" to upgraded bulkhead.



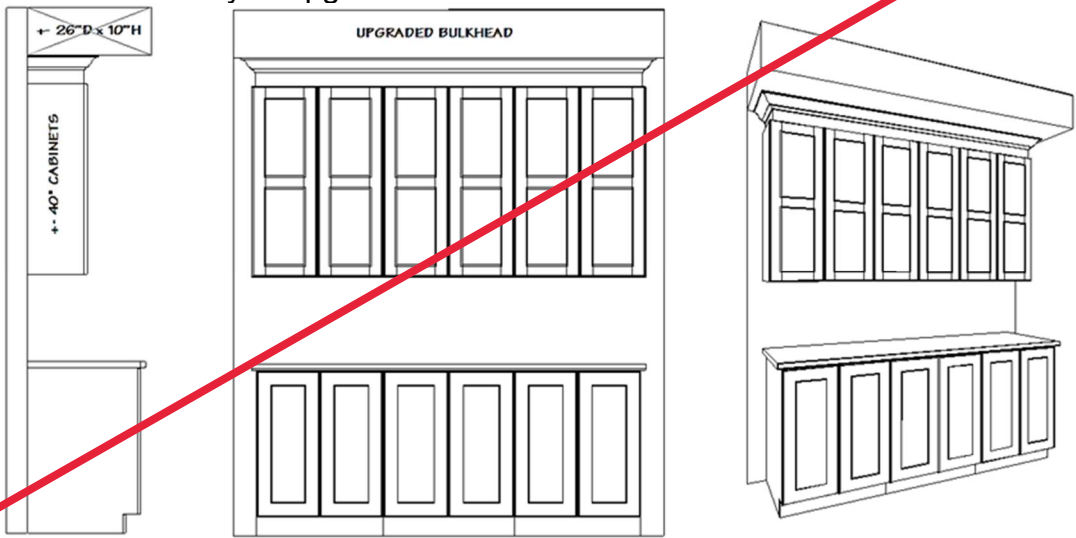
**UPC9-2B** Upgrade #: \_\_\_\_\_

- Includes upgrade to 42" uppers with filler detail on upper kitchen cabinetry to upgraded bulkhead.



**UPC9-3A** Upgrade #: \_\_\_\_\_

- Includes upgrade to 40" uppers with crown moulding & filler detail on upper kitchen cabinetry to upgraded bulkhead.



Site: \_\_\_\_\_ Purchaser: \_\_\_\_\_

Plan No: \_\_\_\_\_ Purchaser: \_\_\_\_\_

Lot: \_\_\_\_\_

Date: \_\_\_\_\_