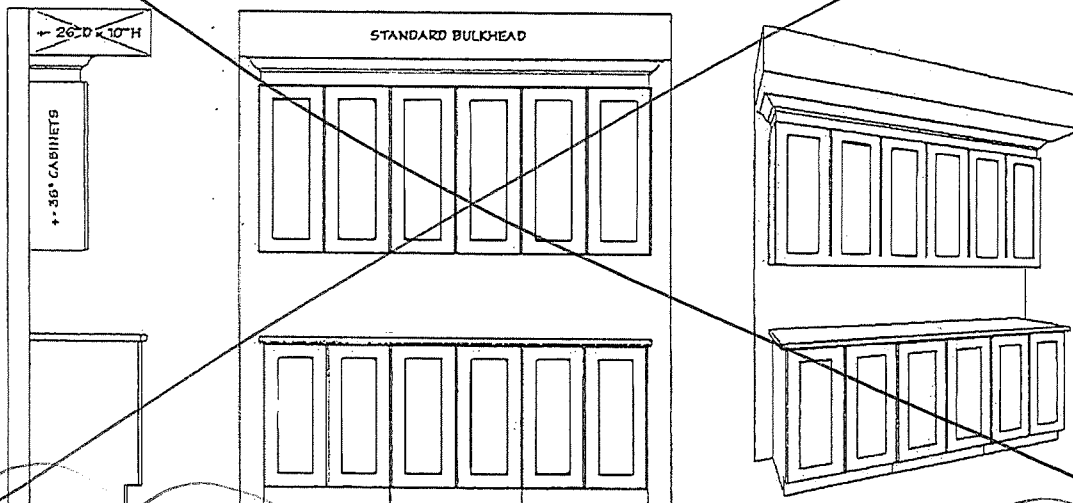


# OPTIONAL KITCHEN CABINET CROWN MOULDING, FILLER & BULKHEAD DETAILS

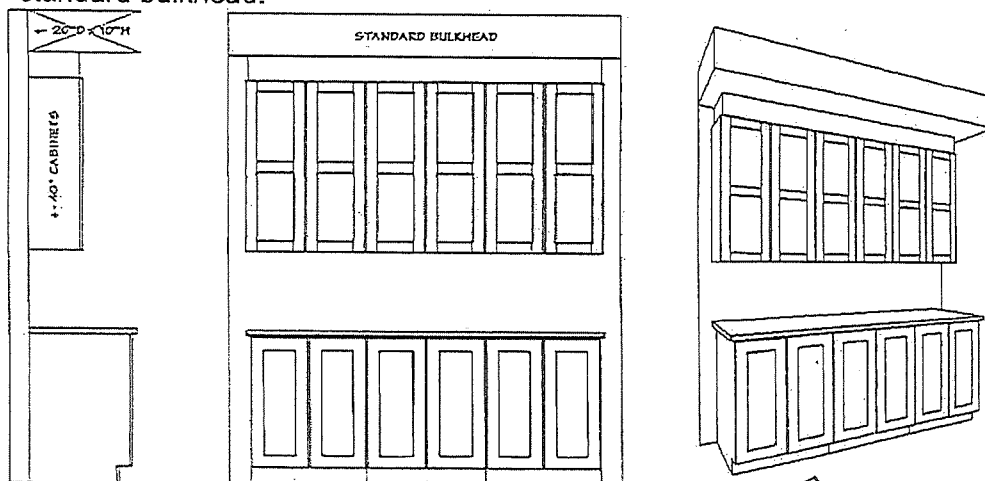
## URC9-1A

- Includes crown moulding & filler detail on upper kitchen cabinetry to standard bulkhead.



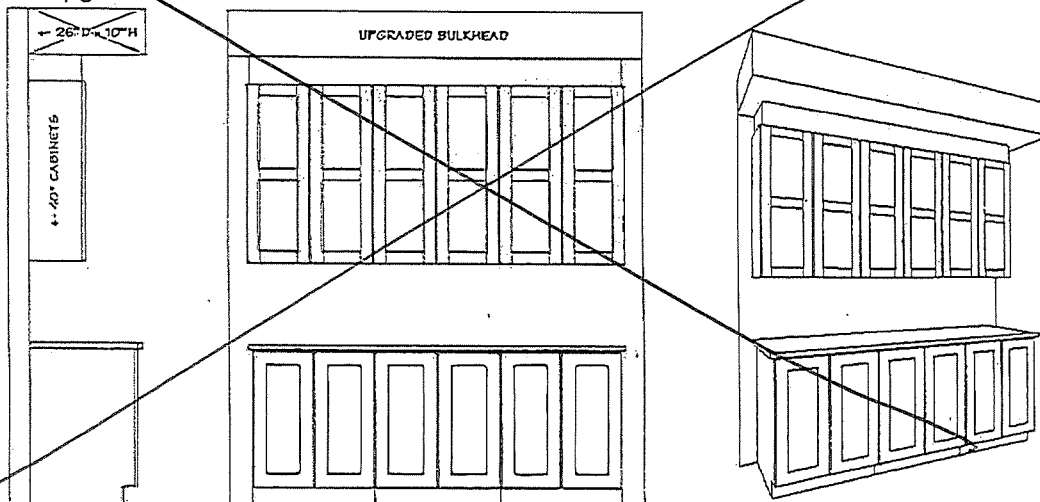
## UPC9-2A

- Includes upgrade to 40" uppers with filler detail on upper kitchen cabinetry to standard bulkhead.



## UPC9-2B

- Includes upgrade to 40" uppers with filler detail on upper kitchen cabinetry to upgraded bulkhead.



Site: DV2

Plan No: 4M-1290

Lot: P91

Date: August 16, 2020

Purchaser: \_\_\_\_\_

Purchaser: \_\_\_\_\_

Deerfield Village 2

Lot: P91

Model: 140 The Green Rev.

Purchasers:

*August 14, 2020*

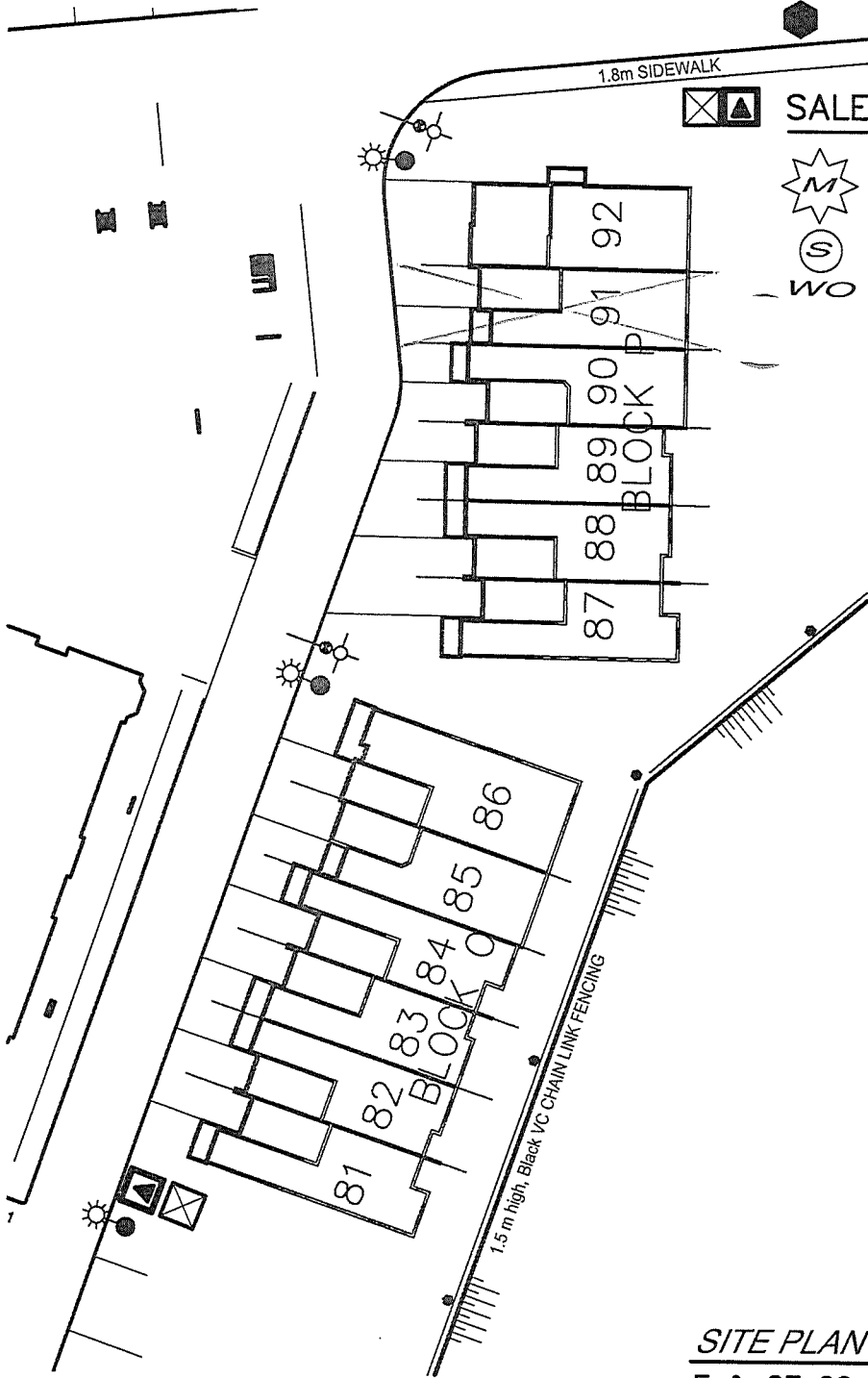
SCHEDULE "D"

LEGEND:

- CMB COMMUNITY MAIL BOX
- FIRE HYDRANT
- HYDRO TRANSFORMER BOX
- ROGERS CABLE PEDESTAL
- BELL TV PEDESTAL
- LIGHT STANDARD
- BELL PEDESTAL
- SERVICE EASEMENT
- CATCH BASIN / MANHOLE
- SUB DRAIN

SALES LEGEND:

- MODEL HOME
- SOLD
- WO WALK OUT BASEMENT



SITE PLAN

E & OE 06. 04, 2020

NOTE:  
DWELLING REPRESENTATION ON LOTS ARE ARTIST CONCEPT ONLY. FINAL BUILDING LOCATION AND ORIENTATION MAY NOT BE AS SHOWN.



Valecraft  
Homes Ltd.