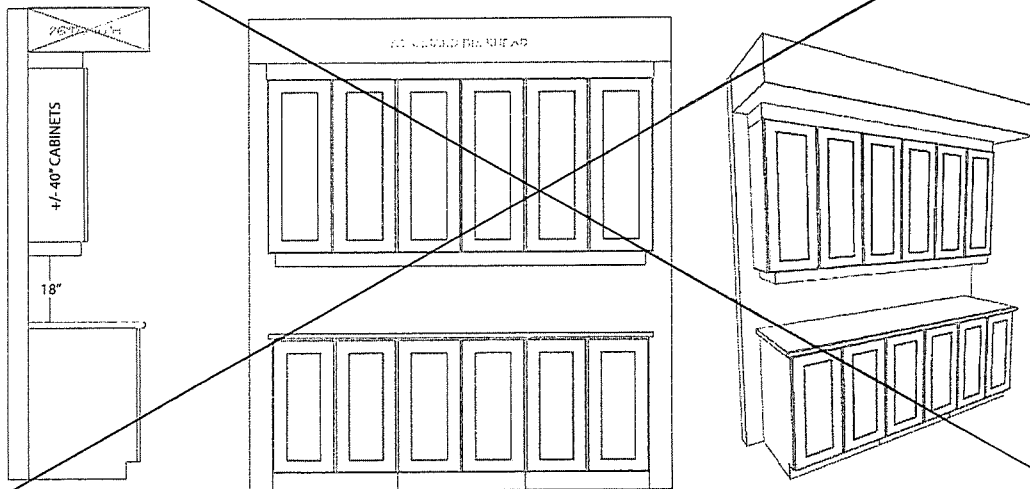


TOWNHOME OPTIONAL KITCHEN CABINET CROWN MOULDING,
FILLER & BULKHEAD DETAILS

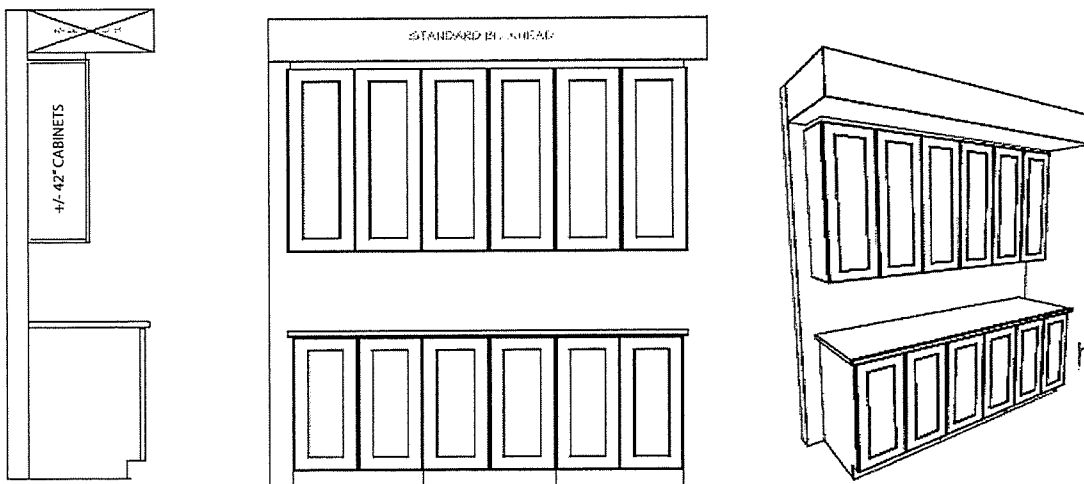
~~UPC9-1B~~

- ~~Includes upgrade to 40" uppers with filler detail & valence on upper kitchen cabinetry. Raised approx. 2" to standard bulkhead.~~



UPC9-2A

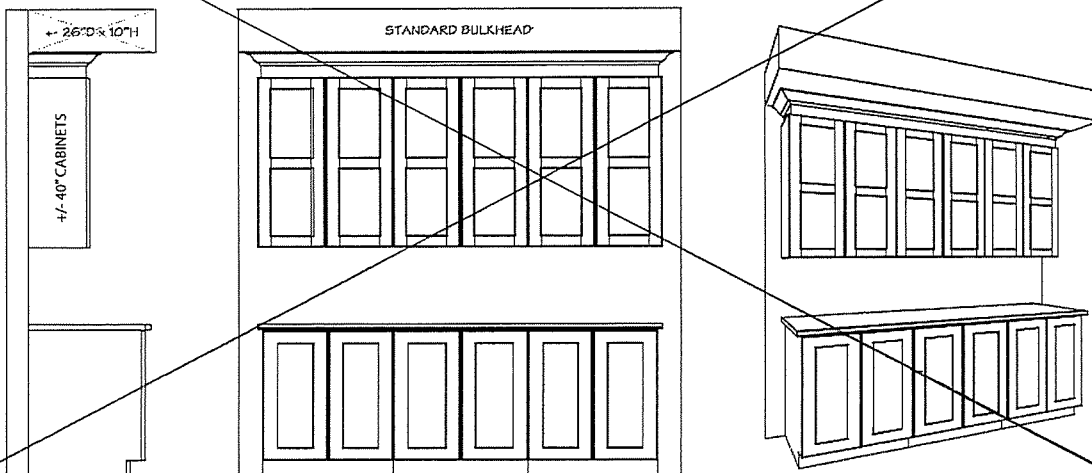
- Includes upgrade to 42" uppers with filler detail on upper kitchen cabinetry to standard bulkhead.



Ref: Item #14

~~UPC9-3B~~

- ~~Includes upgrade to 40" uppers with crown moulding & filler detail on upper kitchen cabinetry to standard bulkhead.~~



Site: DV2 Purchaser: _____

Plan No: 4M-1290

Lot: O84 Purchaser: _____

Date: August 22nd, 2020

Deerfield Village 2

Lot: O84

Model: 130 The Lewis Std.

Purchasers:

August 22, 2020

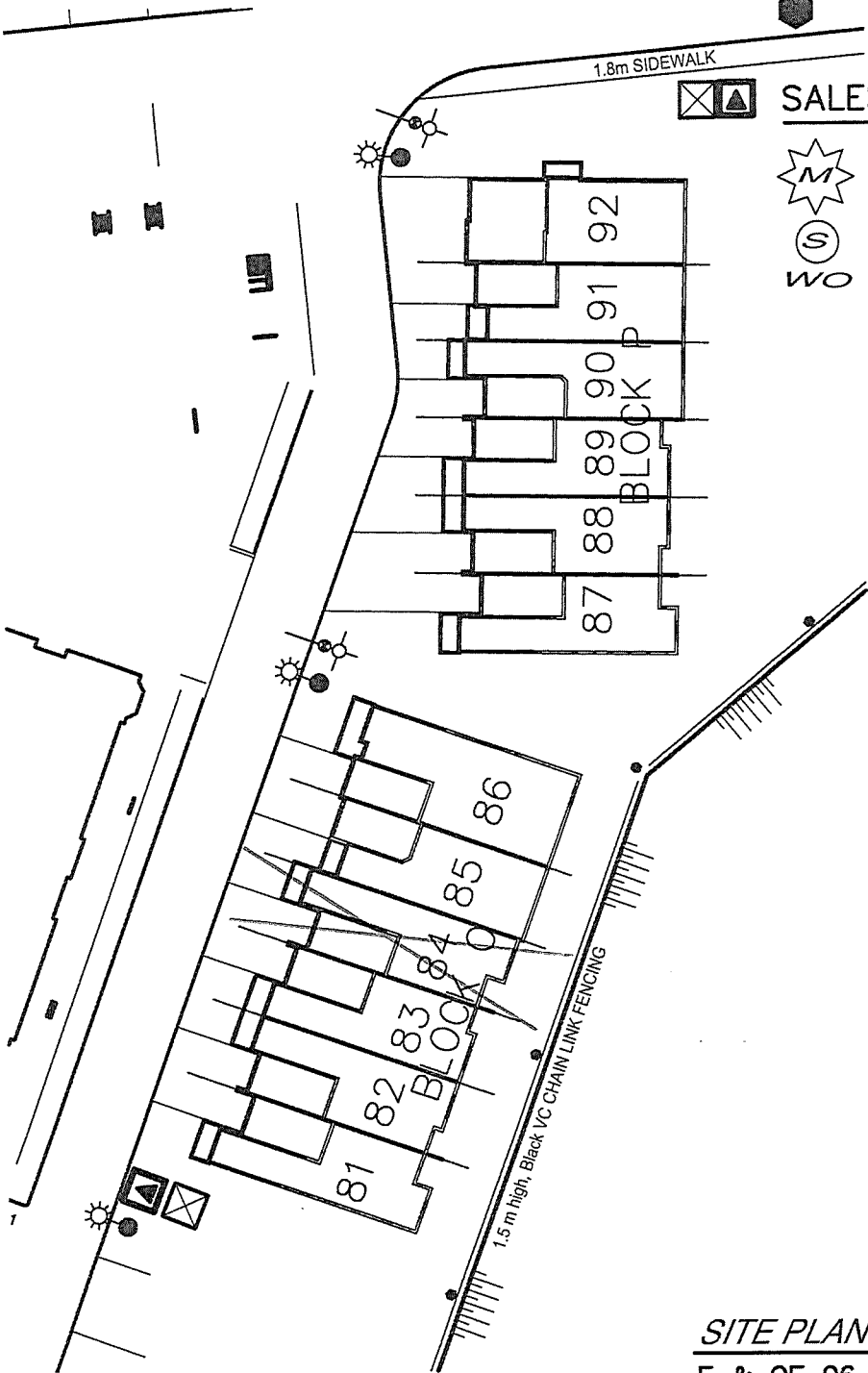
SCHEDULE "D"

LEGEND:

- CMB COMMUNITY MAIL BOX
- FIRE HYDRANT
- HYDRO TRANSFORMER BOX
- ROGERS CABLE PEDESTAL
- BELL TV PEDESTAL
- LIGHT STANDARD
- BELL PEDESTAL
- SERVICE EASEMENT
- CATCH BASIN / MANHOLE
- SUB DRAIN

SALES LEGEND:

- MODEL HOME
- SOLD
- WO WALK OUT BASEMENT



SITE PLAN

E & OE 06. 04, 2020

NOTE:
DWELLING REPRESENTATION ON LOTS ARE ARTIST CONCEPT ONLY. FINAL BUILDING LOCATION AND ORIENTATION MAY NOT BE AS SHOWN.



Valecraft
Homes Ltd.