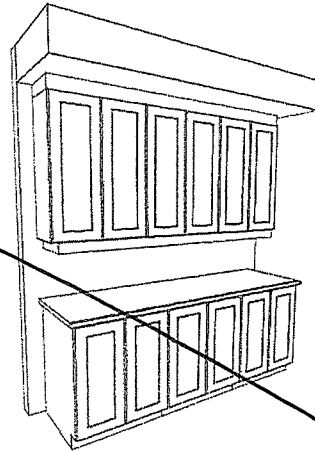
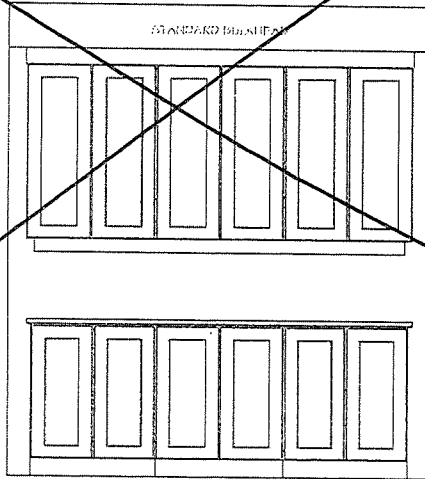
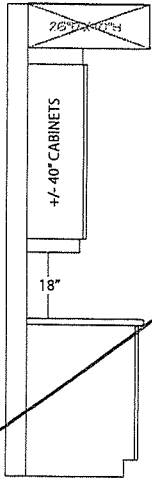


TOWNHOME OPTIONAL KITCHEN CABINET CROWN MOULDING, FILLER & BULKHEAD DETAILS

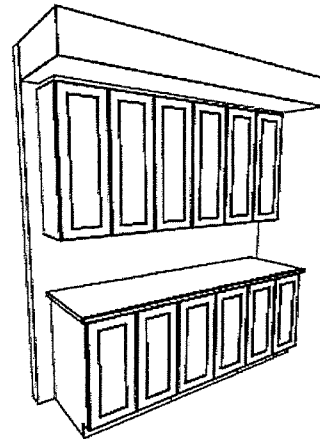
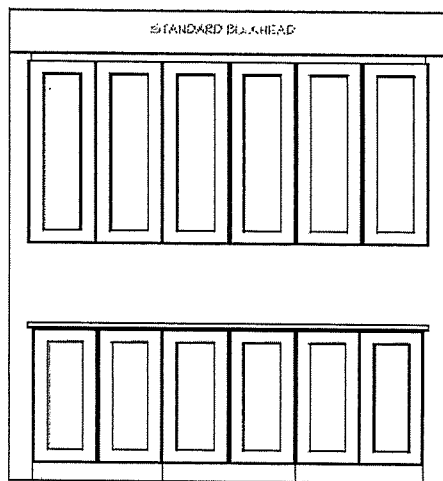
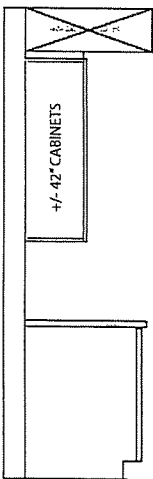
UPC9-1B

- Includes upgrade to 40" uppers with filler detail & valence on upper kitchen cabinetry. Raised approx. 2" to standard bulkhead.



UPC9-2A

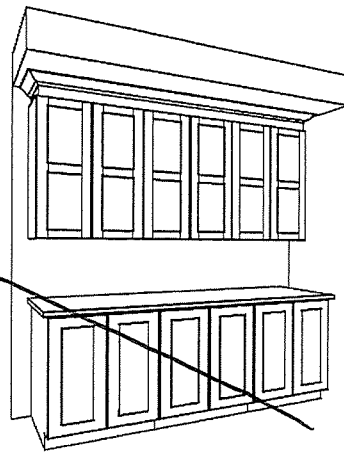
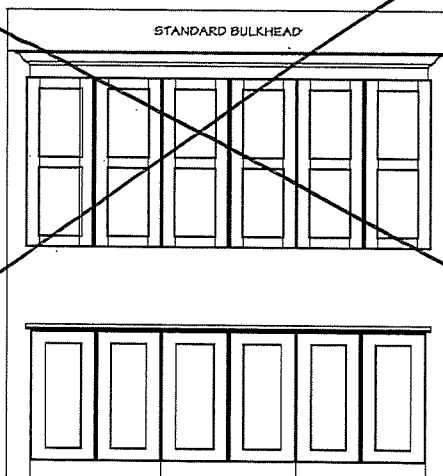
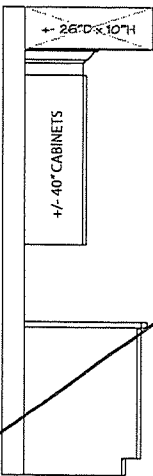
- Includes upgrade to 42" uppers with filler detail on upper kitchen cabinetry to standard bulkhead.



Re item #11

UPC9-3B

- Includes upgrade to 40" uppers with crown moulding & filler detail on upper kitchen cabinetry to standard bulkhead.



Site: DV2

Purchaser: _____

Plan No: 4M-1290

Lot: O81

Purchaser: _____

Date: July 28th 2020

Deerfield Village 2


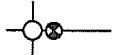



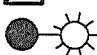

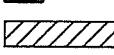


Lot: O81

Model: 130 The Lewis Rev. End.




Purchasers: July 28, 2020 (D-S)

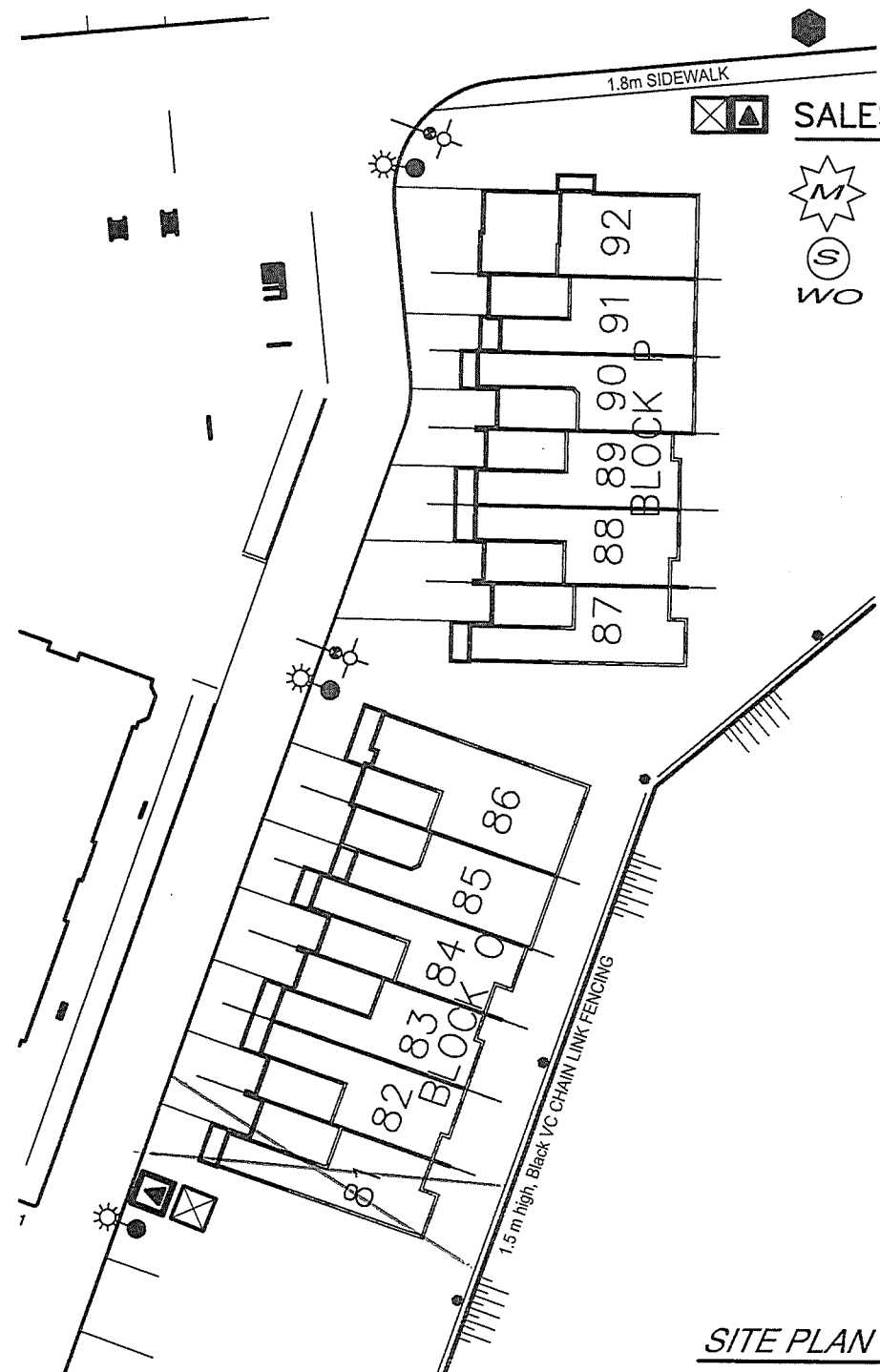
SCHEDULE "D"

LEGEND:

-  COMMUNITY MAIL BOX
-  FIRE HYDRANT
-  HYDRO TRANSFORMER BOX
-  ROGERS CABLE PEDESTAL
-  BELL TV PEDESTAL
-  LIGHT STANDARD
-  BELL PEDESTAL
-  SERVICE EASEMENT
-  CATCH BASIN / MANHOLE
-  SUB DRAIN

SALES LEGEND:

-  MODEL HOME
-  SOLD
-  WO WALK OUT BASEMENT



SITE PLAN

E & OE 06. 04, 2020

NOTE:
DWELLING REPRESENTATION ON LOTS ARE ARTIST CONCEPT ONLY. FINAL BUILDING LOCATION AND ORIENTATION MAY NOT BE AS SHOWN.

