

Tel: (613) 748-0432  
Fax: (613) 748-0355

A Division of the S&S Bolton Group  
www.ssbolton.com

Estimate No#: SS1941 Rev.03

Customer Copy

Customer:

Builder: VALECRAFT HOMES LTD.  
Project: Deerfield Village Towns  
Lot: 000C-13  
Closing Date: 18 Aug - 20 20  
Salesperson: Jason Thompson  
Date: 11/20/2019

Location	Qty	Product / Installation Details	Plan Code	Unit Price	Customer Total
Garage	1.00	Add 15 Amp separate circuit plug for central vacuum	A		
Family Room	1.00	Delete standard fixtures and add 6 pot lights (AFR4-0930-WH) on a dimmer switch - keep standard light at bottom of basement stairs and standard light in hallway to mechanical room	B		
Great Room	1.00	Add 6 LED Halo potlights (AFR4-0930-WH) on added dimmer switch	C		
Kitchen	1.00	Delete standard fixture add 5 LED Halo potlights (AFR4-0930-WH)	D		
Kitchen	1.00	Add 3 keyless fixtures on added switch for future pendant lighting	E		
Hall	1.00	Delete standard fixtures add 3 LED Halo potlights (AFR4-0930-WH)	F		
Basement Stair	1.00	Add 1 LED Halo potlight (AFR4-0930-WH) on existing switch	G		
Great Room	1.00	Add 15 AMP recessed plug approx 72 inches from floor above fireplace beside	H		
Family Room	1.00	Add 15 AMP recessed plug approx 60 inches from floor beside conduit	I		

\*\*\* Total price does not include any applicable taxes.

2019/12/04  
Date

www.sandselectric.ca

Phone: (613) 748-0432 | Fax: (613) 748-0355 | Email: info@sandselectric.ca | Website: www.sandselectric.ca

5411 Canotek Road, Ottawa, Ontario K1J 9M3



Tel: (613) 748-0432  
Fax: (613) 748-0355

Estimate No#: OR2179 Rev.01

Customer Copy

Customer:

Builder: VALECRAFT HOMES LTD.  
Project: Deerfield Village Towns  
Lot: 000C-13  
Closing Date: ~~11/20/2019~~ 11/24/2020  
Salesperson: Jason Thompson (OR)  
Date: 11/20/2019

Location	Qty	Product / Installation Details	Plan Code	Unit Price	Customer Total
Great Room	1.00	(4) Port Plate - (1) Phone CAT5e & (2) Data CAT5e & (1) Cable RG6 Outlets (4) Port Plate - (1) Phone CAT5e & (2) Data CAT5e & (1) Cable RG6 Outlets - Location as shown on floor plan			
Family Room	1.00	(4) Port Plate - (1) Phone CAT5e & (2) Data CAT5e & (1) Cable RG6 Outlets (4) Port Plate - (1) Phone CAT5e & (2) Data CAT5e & (1) Cable RG6 Outlets - Location as shown on floor plan - approx 72 inches from floor above fire place beside plug			
Master Bedroom	1.00	(4) Port Plate - (1) Phone CAT5e & (2) Data CAT5e & (1) Cable RG6 Outlets (4) Port Plate - (1) Phone CAT5e & (2) Data CAT5e & (1) Cable RG6 Outlets - Location as shown on floor plan			
Bedroom #2	1.00	(4) Port Plate - (1) Phone CAT5e & (2) Data CAT5e & (1) Cable RG6 Outlets (4) Port Plate - (1) Phone CAT5e & (2) Data CAT5e & (1) Cable RG6 Outlets - Location as shown on floor plan			
Bedroom #3	1.00	(4) Port Plate - (1) Phone CAT5e & (2) Data CAT5e & (1) Cable RG6 Outlets (4) Port Plate - (1) Phone CAT5e & (2) Data CAT5e & (1) Cable RG6 Outlets - Location as shown on floor plan			
N/A	1.00	2" PVC Conduit from Basement to Attic 2" PVC Conduit from Basement to Attic			
N/A	1.00	Vacuum Rough-In Outlet Vacuum Rough-In Outlets			
Garage	1.00	Vacuum Extension Vacuum Extension - Location as shown on floor plan - Extends and connects all vacuum rough-in outlets to one location - Seal vacuum pipe when extended to the garage as per building code			
Garage	1.00	Vacuum System w/ Accessories (VAC-KITCV600AW) Vacuum System w/ Accessories (VAC-KITCV600AW) - Location as shown on floor plan - Includes Ethos central vacuum cannister (CANA-VAC ES-625) and accessories kit (LS Performance Pack)			
Family Room	1.00	Direct 2" Conduit w/ Wall Plates Direct 2" Conduit w/ Wall Plates - Location as shown on floor plan - Conduit installed in-wall to conceal wires connected to wall mounted TV - approx 60 inches from floor beside plug			

Phone: (613) 748-0432 | Fax: (613) 748-0355 | Email: info@orbitalti.com | Website: www.orbitalti.com

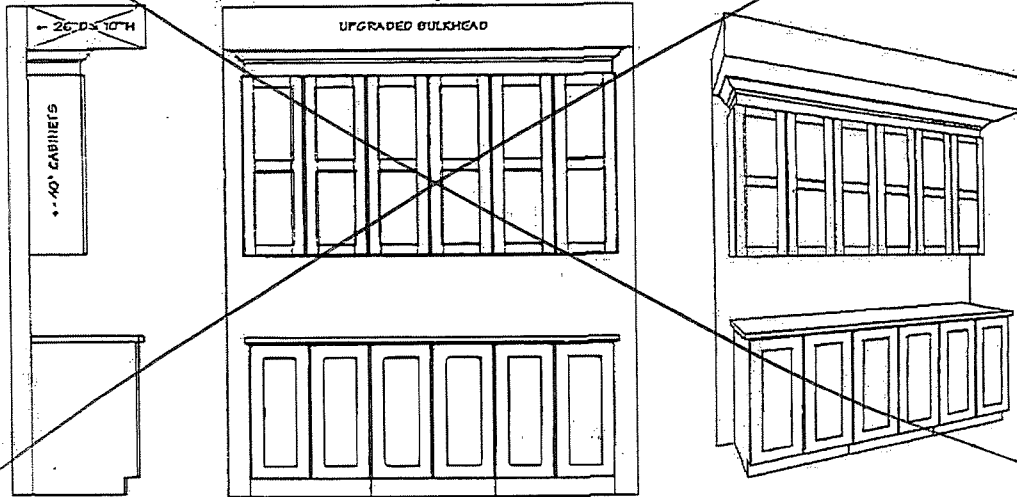
5 4 1 1 Canotek Road, Ottawa, Ontario K1J 9M3

www.orbitalti.com

## OPTIONAL KITCHEN CABINET CROWN MOULDING, FILLER & BULKHEAD DETAILS

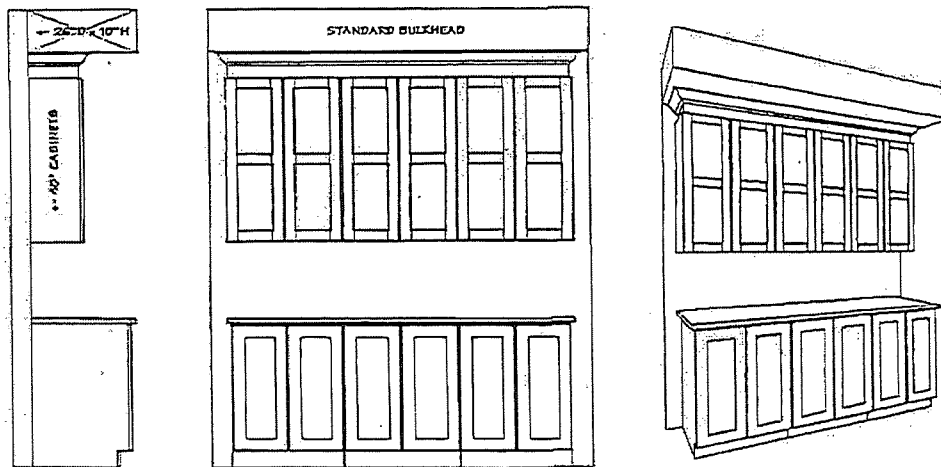
### UPC9-3A

- Includes upgrade to 40" uppers with crown moulding & filler detail on upper kitchen cabinetry to upgraded bulkhead.



### UPC9-3B

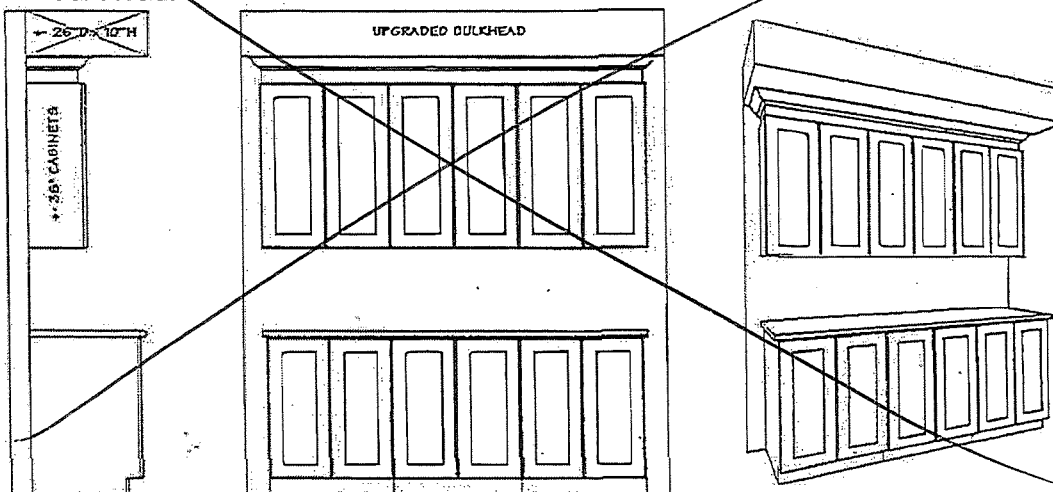
- Includes upgrade to 40" uppers with crown moulding & filler detail on upper kitchen cabinetry to standard bulkhead.



*Res item  
#28*

### UPC9-4A

- Includes crown moulding & filler detail on upper kitchen cabinetry to upgraded bulkhead.



Site: DV2  
 Plan No: 4M-1290  
 Lot: C13  
 Date: December 4th, 2019

Purchaser: \_\_\_\_\_  
 Purchaser: \_\_\_\_\_

Deerfield Village 2 – Phase 1  
Lot: C13  
Model: 160-2 Stanley Std. W/O  
Purchasers:

Dec - 4.2019

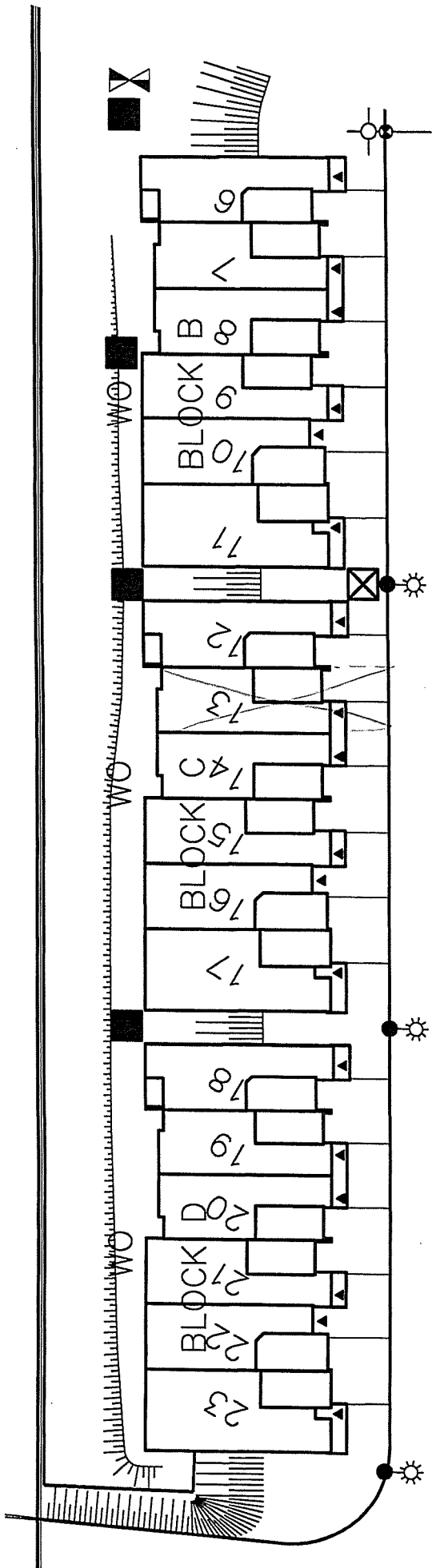
SCHEDULE "D"

LEGEND:

- CMB COMMUNITY MAIL BOX
- FIRE HYDRANT
- HYDRO TRANSFORMER BOX
- ROGERS CABLE PEDESTAL
- BELL TV PEDESTAL
- LIGHT STANDARD
- BELL PEDESTAL
- SERVICE EASEMENT
- CATCH BASIN / MANHOLE
- WATER VALVE

SALES LEGEND:

- MODEL HOME
- SOLD
- WO WALK OUT BASEMENT



SITE PLAN

E & OE AUG. 22, 2019

NOTE:  
DWELLING REPRESENTATION ON LOTS ARE ARTIST CONCEPT ONLY. FINAL BUILDING LOCATION AND ORIENTATION MAY NOT BE AS SHOWN.



Valecraft  
Homes