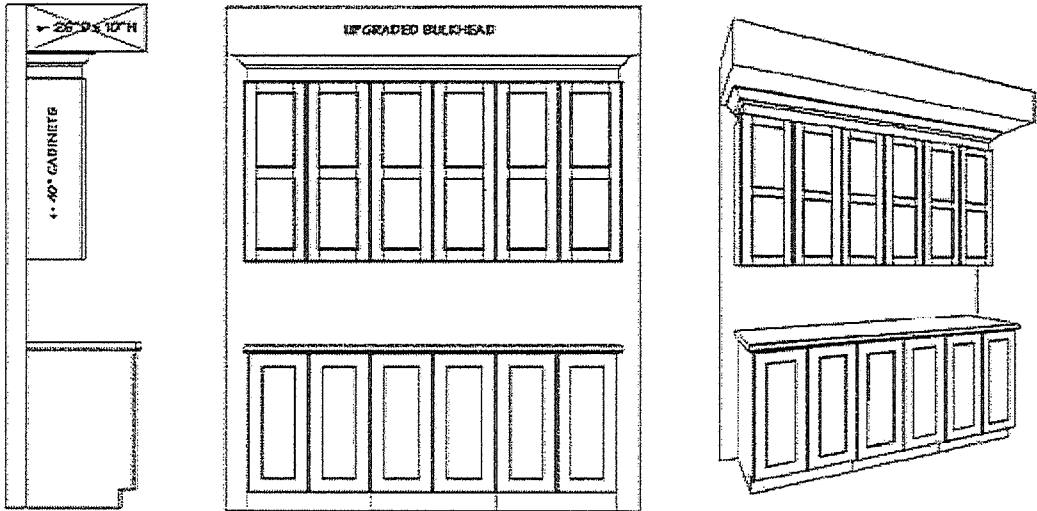


SINGLE HOME OPTIONAL KITCHEN CABINET CROWN MOULDING,  
FILLER & BULKHEAD DETAILS

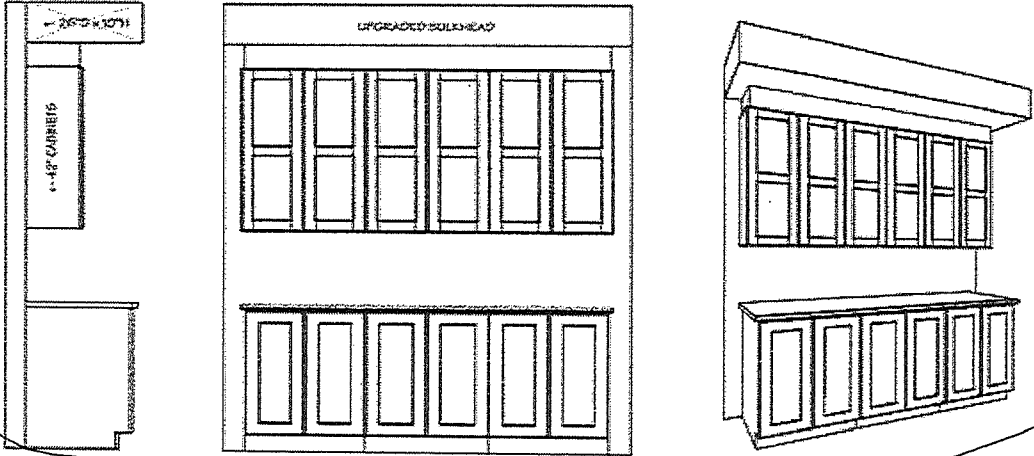
UPC9-3A

- Includes upgrade to 40" uppers with crown moulding & filler detail on upper kitchen cabinetry to upgraded bulkhead.



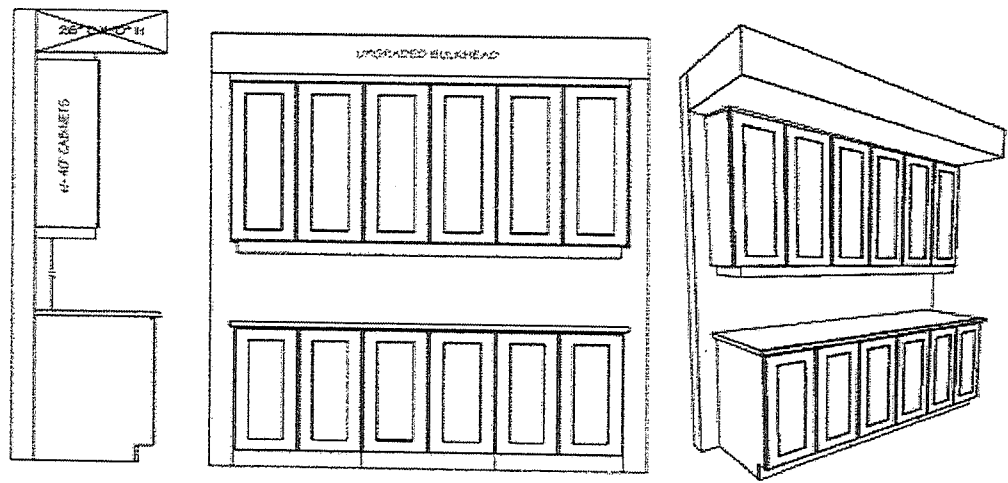
#45  
UPC9-2B

- Includes upgrade to 42" uppers with filler detail on upper kitchen cabinetry to upgraded bulkhead.



UPC9-1C

- Includes upgrade to 40" uppers with filler detail & valence on upper kitchen cabinetry. Raised approx. 2" to upgraded bulkhead.



Site: Place St. Thomas 3

Purchaser: \_\_\_\_\_

Plan No: 50M-338

Lot: 11 - Phase 3

Purchaser: \_\_\_\_\_

Date: May 17, 2020